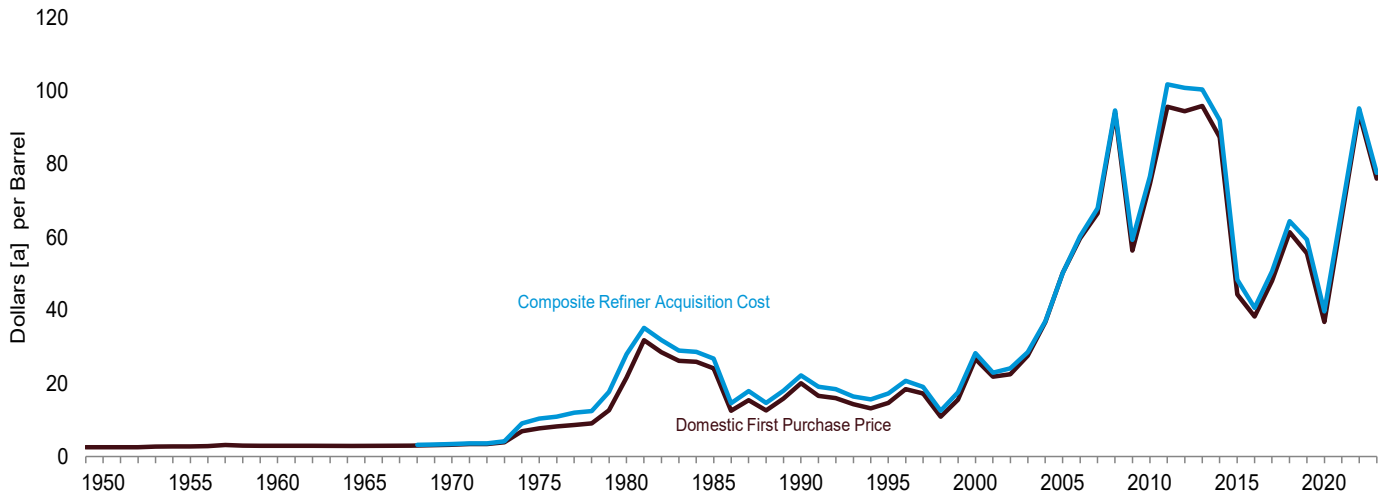


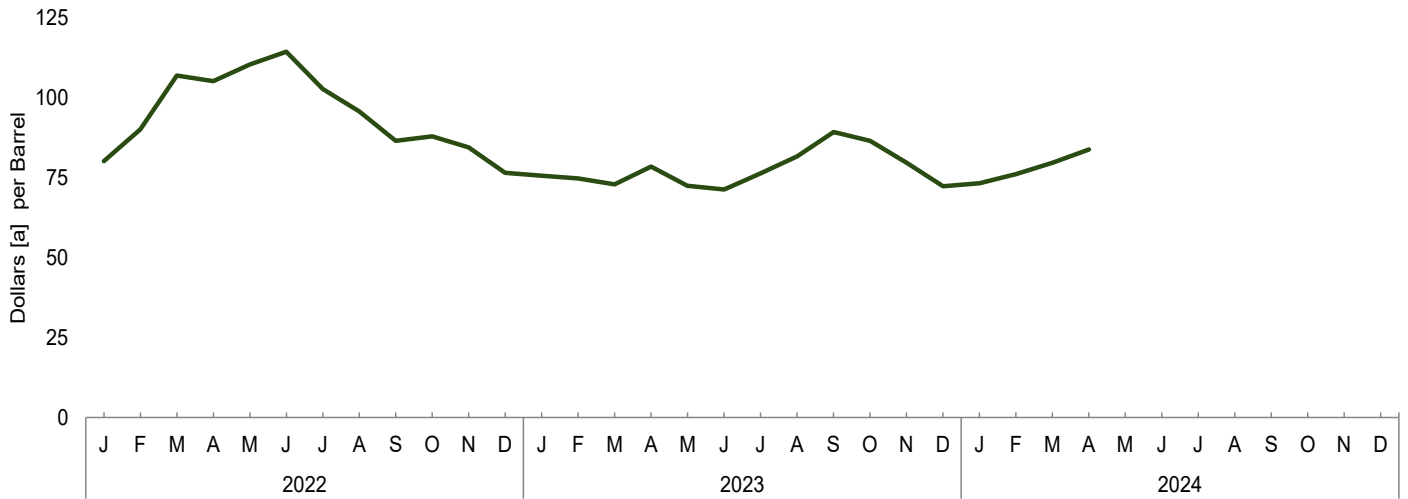
9. Energy Prices

Figure 9.1 Petroleum Prices

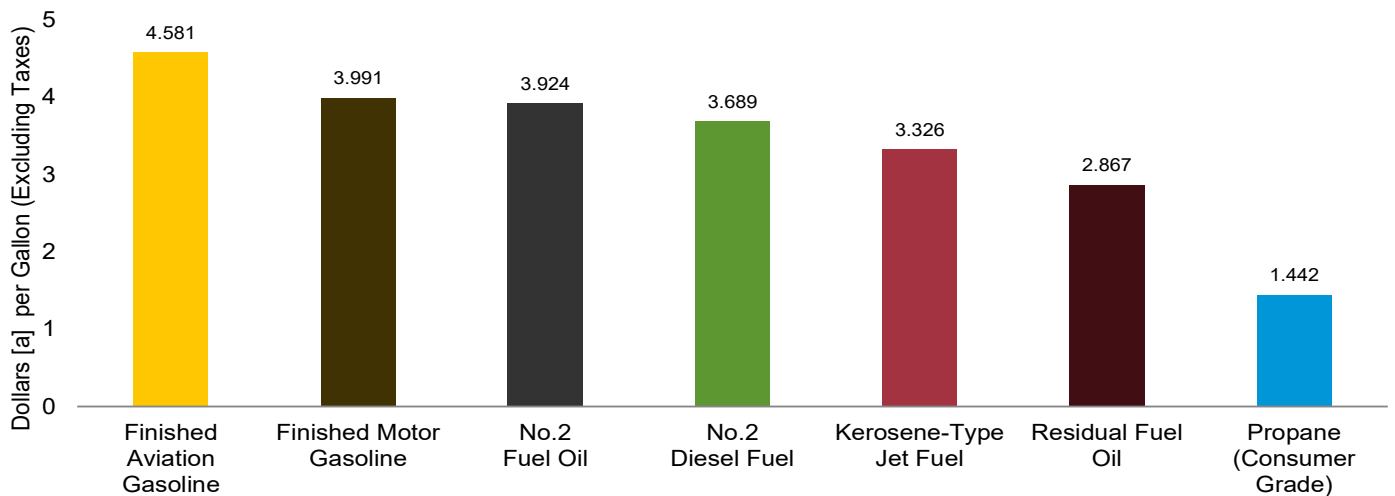
Crude Oil Prices, 1949–2023



Composite Refiner Acquisition Cost, Monthly



Refiner Prices to End Users: Select Products, March 2022



[a] Prices are not adjusted for inflation. See “Nominal Dollars” in Glossary.

Web Page: <http://www.eia.gov/totalenergy/data/monthly/#prices>.

Sources: Tables 9.1, 9.5, and 9.7.

“Refiner Prices to End Users” has not been updated due to the delay of Petroleum Marketing Monthly.

Table 9.1 Crude Oil Price Summary
(Dollars^a per Barrel)

	Domestic First Purchase Price ^c	F.O.B. Cost of Imports ^d	Landed Cost of Imports ^e	Refiner Acquisition Cost ^b		
				Domestic	Imported	Composite
1950 Average	2.51	NA	NA	NA	NA	NA
1955 Average	2.77	NA	NA	NA	NA	NA
1960 Average	2.88	NA	NA	NA	NA	NA
1965 Average	2.86	NA	NA	NA	NA	NA
1970 Average	3.18	NA	NA	^E 3.46	^E 2.96	^E 3.40
1975 Average	7.67	11.18	12.70	8.39	13.93	10.38
1980 Average	21.59	32.37	33.67	24.23	33.89	28.07
1985 Average	24.09	25.84	26.67	26.66	26.99	26.75
1990 Average	20.03	20.37	21.13	22.59	21.76	22.22
1995 Average	14.62	15.69	16.78	17.33	17.14	17.23
2000 Average	26.72	26.27	27.53	29.11	27.70	28.26
2005 Average	50.28	47.60	49.29	52.94	48.86	50.24
2010 Average	74.71	74.19	76.50	78.01	75.86	76.69
2011 Average	95.73	101.66	102.92	100.71	102.63	101.87
2012 Average	94.52	99.78	101.00	100.72	101.09	100.93
2013 Average	95.99	96.56	96.99	102.91	98.11	100.49
2014 Average	87.39	85.65	88.16	94.05	89.56	92.02
2015 Average	44.39	41.91	45.38	49.94	46.38	48.39
2016 Average	38.29	36.37	38.56	42.41	38.75	40.66
2017 Average	48.05	45.58	48.50	52.05	49.12	50.68
2018 Average	61.40	56.31	58.89	67.05	60.95	64.38
2019 Average	55.59	54.27	56.60	60.31	57.94	59.38
2020 Average	36.86	33.66	36.42	41.23	37.41	39.75
2021 Average	65.84	62.04	65.05	69.07	65.85	67.83
2022 January	80.33	72.91	76.36	82.52	76.92	80.26
February	89.41	86.22	87.71	91.85	87.73	90.21
March	107.07	99.71	101.61	108.62	104.39	106.98
April	103.34	98.86	101.52	106.74	102.70	105.22
May	108.29	103.80	105.62	111.45	108.71	110.43
June	113.77	106.95	109.42	115.90	112.06	114.44
July	100.84	92.18	96.10	104.82	99.67	102.82
August	93.76	83.06	88.55	98.11	92.21	95.80
September	84.62	76.17	82.01	88.51	83.30	86.57
October	86.61	75.10	78.87	90.25	84.26	88.02
November	84.43	68.85	75.02	87.92	79.31	84.57
December	76.45	64.87	69.23	80.20	70.89	76.56
Average	93.97	85.98	89.62	97.45	91.83	95.29
2023 January	75.71	^R 62.82	^R 67.35	^R 79.23	^R 70.32	^R 75.70
February	74.32	60.58	65.40	^R 78.34	^R 69.67	^R 74.86
March	72.09	62.79	66.32	^R 75.84	^R 68.53	^R 73.00
April	^R 77.23	68.95	71.15	80.51	^R 75.23	^R 78.53
May	70.14	^R 63.68	^R 68.58	^R 74.20	^R 70.05	^R 72.57
June	^R 68.59	^R 63.82	^R 69.36	^R 72.50	^R 69.58	^R 71.39
July	^R 74.07	69.71	^R 73.92	77.41	^R 74.83	76.41
August	79.78	75.82	^R 78.57	82.22	^R 81.10	^R 81.78
September	87.96	79.77	^R 83.09	90.76	^R 87.14	^R 89.32
October	84.65	76.04	79.90	88.68	^R 83.21	^R 86.60
November	^R 77.46	69.33	^R 73.50	82.10	^R 76.42	^R 79.70
December	^R 71.01	60.13	65.95	75.31	68.09	72.34
Average	76.10	67.65	^R 71.82	^R 79.71	^R 74.53	^R 77.67
2024 January	72.26	^R 62.58	^R 66.46	75.89	69.37	73.28
February	^R 74.96	^R 67.19	^R 71.32	78.19	^R 73.00	^R 76.19
March	^R 78.97	^R 67.95	^R 71.30	^R 82.18	^R 76.03	^R 79.70
April	NA	NA	NA	^E 86.26	^E 79.97	^E 83.89

^a Prices are not adjusted for inflation. See "Nominal Dollars" in Glossary.
^b See Note 1, "Crude Oil Refinery Acquisition Costs," at end of section.
^c See Note 2, "Crude Oil Domestic First Purchase Prices," at end of section.
^d See Note 3, "Crude Oil F.O.B. Costs," at end of section.
^e See Note 4, "Crude Oil Landed Costs," at end of section.
^R=Revised. ^{NA}=Not available. ^E=Estimate.
Notes: • Domestic first purchase prices and refinery acquisition costs for the current two months are preliminary. F.O.B. and landed costs for the current three months are preliminary. • Through 1980, F.O.B. and landed costs reflect the

period of reporting; beginning in 1981, they reflect the period of loading. • Annual averages are the averages of the monthly prices, weighted by volume.
• Geographic coverage is the 50 states, the District of Columbia, Puerto Rico, the Virgin Islands, and all U.S. Territories and Possessions.
Web Page: See <http://www.eia.gov/totalenergy/data/monthly/#prices> (Excel and CSV files) for all available annual data beginning in 1949 and monthly data beginning in 1973.
Sources: See end of section.

Table 9.2 F.O.B. Costs of Crude Oil Imports From Selected Countries
(Dollars^a per Barrel)

	Selected Countries							Persian Gulf Nations ^b	Total OPEC ^c	Total Non-OPEC ^c
	Angola	Colombia	Mexico	Nigeria	Saudi Arabia	United Kingdom	Venezuela			
1973 Average ^d	W	W	–	7.81	3.25	–	5.39	3.68	5.43	4.80
1975 Average	10.97	–	11.44	11.82	10.87	–	11.04	10.88	11.34	10.62
1980 Average	33.45	W	31.06	35.93	28.17	34.36	24.81	28.92	32.21	32.85
1985 Average	26.30	–	25.33	28.04	22.04	27.64	23.64	23.31	25.67	25.96
1990 Average	20.23	20.75	19.26	22.46	20.36	23.43	19.55	18.54	20.40	20.32
1995 Average	16.58	16.73	15.64	17.40	W	16.94	13.86	W	15.36	16.02
2000 Average	27.90	29.04	25.39	28.70	24.62	27.21	24.45	24.72	25.56	26.77
2005 Average	52.48	51.89	43.00	55.95	47.96	54.48	46.39	47.21	49.60	45.79
2010 Average	78.18	72.56	72.46	80.83	76.44	W	70.30	75.65	75.23	73.24
2011 Average	111.82	100.21	100.90	115.35	107.08	–	97.23	106.47	105.34	98.49
2012 Average	111.23	106.43	101.84	114.51	106.65	–	100.15	105.45	104.39	95.71
2013 Average	107.71	101.24	98.40	110.06	101.16	W	97.52	100.62	100.57	93.67
2014 Average	W	80.75	86.55	W	95.60	–	84.51	94.03	89.76	82.95
2015 Average	W	47.52	44.90	W	47.53	–	40.73	46.95	43.25	41.19
2016 Average	42.68	35.28	36.22	46.20	39.30	W	34.71	38.76	38.51	34.81
2017 Average	W	48.34	46.66	54.77	51.30	W	45.60	50.16	49.55	43.30
2018 Average	74.44	62.51	62.75	71.41	68.23	71.65	61.25	66.55	65.61	51.41
2019 Average	66.97	60.61	56.72	67.21	63.48	65.20	48.57	61.43	62.11	52.36
2020 Average	W	36.03	36.00	W	35.35	43.39	–	36.06	38.34	33.22
2021 Average	75.02	66.15	64.42	73.83	68.43	W	–	66.72	69.18	60.93
2022 January	–	W	75.35	W	93.17	–	–	88.59	88.47	70.67
February	W	93.28	86.36	W	W	–	–	96.33	98.86	84.37
March	W	W	100.84	W	W	–	–	106.35	111.95	98.36
April	W	105.21	99.50	W	W	–	–	104.95	109.49	97.13
May	W	108.83	104.49	W	W	–	–	W	115.18	102.14
June	W	W	109.97	W	W	–	–	102.09	113.76	105.86
July	W	100.17	94.65	W	W	–	–	95.97	103.06	90.27
August	W	W	86.09	W	W	–	–	W	102.01	79.67
September	W	W	80.31	W	W	–	–	W	91.38	73.26
October	–	W	79.36	W	W	–	–	W	90.66	72.59
November	–	W	78.10	W	W	–	–	W	86.10	66.81
December	–	76.45	68.84	W	W	–	–	W	84.75	61.61
Average	W	93.57	89.32	W	95.58	–	–	92.34	99.69	83.86
2023 January	–	W	67.10	W	W	–	–	W	R 81.58	R 60.50
February	–	W	66.16	W	W	–	–	75.45	78.39	59.29
March	W	W	62.28	W	W	–	–	W	85.82	60.25
April	W	W	68.75	W	W	–	–	78.68	81.50	66.52
May	–	W	64.26	W	W	–	–	W	R 77.38	R 62.11
June	W	W	R 65.34	W	W	–	W	W	78.44	R 61.65
July	W	W	70.57	W	W	–	W	W	80.45	68.28
August	W	W	76.73	W	W	–	W	W	88.21	74.81
September	W	–	83.26	W	W	–	W	W	89.30	78.62
October	–	W	82.27	W	W	–	W	W	84.87	75.35
November	W	W	72.97	W	W	–	W	W	83.60	67.17
December	–	–	67.97	W	W	–	–	W	80.19	57.99
Average	W	W	R 70.27	W	W	–	W	R 79.77	82.32	R 65.91
2024 January	–	–	69.74	W	W	–	–	W	W	60.79
February	–	–	R 71.87	W	–	–	W	W	R 73.69	R 66.28
March	–	W	74.14	W	–	–	W	–	77.40	66.84

^a Prices are not adjusted for inflation. See "Nominal Dollars" in Glossary.
^b Bahrain, Iran, Iraq, Kuwait, Qatar, Saudi Arabia, United Arab Emirates, and the Neutral Zone (between Kuwait and Saudi Arabia).
^c See "Organization of the Petroleum Exporting Countries (OPEC)" in Glossary for exact years of each country's membership. On this table, "Total OPEC" for all years includes Algeria, Iran, Iraq, Kuwait, Libya, Nigeria, Qatar, Saudi Arabia, United Arab Emirates, and Venezuela; Angola is included in "Total OPEC" 2007 forward; Gabon is included in "Total OPEC" 1974–1995 and July 2016 forward; Ecuador is included in "Total OPEC" 1973–1992 and 2008 forward; Indonesia is included in "Total OPEC" 1973–2008 and 2016.
^d Based on October, November, and December data only.
R=Revised. –=No data reported. W=Value withheld to avoid disclosure of individual company data.
Notes: • The Free on Board (F.O.B.) cost at the country of origin excludes all

costs related to insurance and transportation. See "F.O.B. (Free on Board)" in Glossary, and Note 3, "Crude Oil F.O.B. Costs," at end of section. • Values for the current two months are preliminary. • Through 1980, prices reflect the period of reporting; beginning in 1981, prices reflect the period of loading. • Annual averages are averages of the monthly prices, including prices not published, weighted by volume. • Cargoes that are purchased on a "netback" basis, or under similar contractual arrangements whereby the actual purchase price is not established at the time the crude oil is acquired for importation into the United States, are not included in the published data until the actual prices have been determined and reported. • U.S. geographic coverage is the 50 states and the District of Columbia.
Web Page: See <http://www.eia.gov/totalenergy/data/monthly/#prices> (Excel and CSV files) for all available annual and monthly data beginning in 1973.
Sources: See end of section.

Table 9.3 Landed Costs of Crude Oil Imports From Selected Countries
(Dollars^a per Barrel)

	Selected Countries								Persian Gulf Nations ^b	Total OPEC ^c	Total Non-OPEC ^c
	Angola	Canada	Colombia	Mexico	Nigeria	Saudi Arabia	United Kingdom	Venezuela			
1973 Average ^d	W	5.33	W	—	9.08	5.37	—	5.99	5.91	6.85	5.64
1975 Average	11.81	12.84	—	12.61	12.70	12.50	—	12.36	12.64	12.70	12.70
1980 Average	34.76	30.11	W	31.77	37.15	29.80	35.68	25.92	30.59	33.56	33.99
1985 Average	27.39	25.71	—	25.63	28.96	24.72	28.36	24.43	25.50	26.86	26.53
1990 Average	21.51	20.48	22.34	19.64	23.33	21.82	22.65	20.31	20.55	21.23	20.98
1995 Average	17.66	16.65	17.45	16.19	18.25	16.84	17.91	14.81	16.78	16.61	16.95
2000 Average	29.57	26.69	29.68	26.03	30.04	26.58	29.26	26.05	26.77	27.29	27.80
2005 Average	54.31	44.73	53.42	43.47	57.55	50.31	55.28	47.87	49.68	51.36	47.31
2010 Average	80.61	72.80	74.25	72.86	83.14	79.29	80.29	72.43	78.60	78.28	74.68
2011 Average	114.05	89.92	102.57	101.21	116.43	108.83	118.45	100.14	108.01	107.84	98.64
2012 Average	114.95	84.24	107.07	102.45	116.88	108.15	W	101.58	107.74	107.56	95.05
2013 Average	110.81	84.41	103.00	99.06	112.87	102.60	111.23	99.34	102.53	102.98	91.99
2014 Average	99.25	81.30	88.29	87.48	102.16	94.91	W	86.88	95.30	93.10	84.67
2015 Average	51.73	41.99	49.53	45.51	54.70	49.78	W	42.87	49.43	47.44	44.09
2016 Average	44.65	36.27	38.86	36.64	48.11	42.14	W	35.50	41.20	40.54	37.09
2017 Average	54.17	44.93	50.60	47.73	56.48	52.56	56.11	47.02	51.42	51.26	46.67
2018 Average	73.42	48.34	66.75	63.48	71.93	69.40	73.28	62.46	67.55	67.22	54.27
2019 Average	68.58	51.10	62.83	57.96	68.78	64.86	66.65	52.36	63.27	63.41	54.65
2020 Average	41.03	33.81	41.04	37.18	46.24	35.84	44.51	—	37.98	39.28	35.95
2021 Average	75.50	61.30	69.25	65.48	73.90	72.69	74.71	—	71.39	71.90	63.87
2022 January	—	70.59	80.05	76.61	W	99.72	—	—	91.69	90.76	73.48
February	W	83.74	88.88	87.58	W	98.89	—	—	95.19	97.10	86.08
March	W	98.64	102.26	101.01	W	107.60	W	—	107.26	110.00	100.34
April	W	98.21	105.22	101.10	W	109.85	W	—	107.88	109.80	99.76
May	W	102.21	109.15	105.75	W	109.86	W	—	108.01	111.88	104.18
June	W	106.00	113.95	111.36	W	104.51	W	—	105.87	110.42	109.22
July	W	92.01	102.16	96.88	W	96.55	W	—	96.23	100.78	95.27
August	W	82.09	93.50	88.76	W	93.83	W	—	92.18	98.00	86.80
September	W	74.65	90.55	82.61	W	88.98	W	—	86.85	90.30	79.86
October	—	74.03	88.05	81.63	W	84.41	W	—	83.27	88.60	76.95
November	—	68.22	84.35	81.36	W	84.85	W	—	81.95	86.48	73.31
December	—	61.24	78.09	71.93	94.36	81.96	88.83	—	79.36	85.37	66.64
Average	112.44	84.39	95.19	91.18	108.45	97.51	105.28	—	95.41	98.71	87.89
2023 January	—	R 60.34	74.96	69.16	90.66	81.36	W	W	76.16	79.79	R 64.66
February	W	59.79	74.04	68.25	88.51	83.08	—	W	77.46	77.91	63.14
March	W	61.72	70.27	66.03	W	83.45	W	W	77.48	78.84	64.32
April	W	67.10	74.63	71.17	W	80.52	W	63.32	78.48	78.09	69.71
May	W	R 65.50	71.70	66.38	W	79.74	76.76	W	R 76.12	74.85	R 67.23
June	W	R 65.80	71.73	R 67.21	W	81.42	—	59.14	77.62	R 77.38	R 67.74
July	W	R 68.44	74.85	71.71	W	91.43	W	69.75	85.61	R 84.69	R 71.53
August	W	R 75.29	82.64	77.38	W	91.92	92.43	76.98	85.89	86.11	R 77.32
September	W	R 80.05	87.43	84.07	W	W	W	W	88.73	R 90.61	R 82.10
October	—	76.24	86.20	83.08	—	W	—	80.00	R 83.65	R 84.48	79.33
November	W	67.85	77.49	75.76	W	R 83.51	87.60	—	R 81.02	82.61	R 72.04
December	—	58.62	76.35	69.18	W	84.43	W	W	81.08	80.59	64.13
Average	86.06	R 67.09	76.70	R 72.44	R 88.85	R 84.19	84.43	67.63	R 80.46	R 80.93	R 70.23
2024 January	W	R 60.69	76.43	70.25	W	W	W	W	R 85.13	R 81.48	R 64.72
February	—	R 66.18	R 77.38	R 73.85	W	W	—	W	R 78.17	R 78.08	R 70.08
March	W	67.25	79.50	75.73	W	W	—	W	78.24	79.30	70.31

^a Prices are not adjusted for inflation. See "Nominal Dollars" in Glossary.
^b Bahrain, Iran, Iraq, Kuwait, Qatar, Saudi Arabia, United Arab Emirates, and the Neutral Zone (between Kuwait and Saudi Arabia).
^c See "Organization of the Petroleum Exporting Countries (OPEC)" in Glossary for exact years of each country's membership. On this table, "Total OPEC" for all years includes Algeria, Iran, Iraq, Kuwait, Libya, Nigeria, Qatar, Saudi Arabia, United Arab Emirates, and Venezuela; Angola is included in "Total OPEC" 2007 forward; Gabon is included in "Total OPEC" 1974–1995 and July 2016 forward; Ecuador is included in "Total OPEC" 1973–1992 and 2008 forward; Indonesia is included in "Total OPEC" 1973–2008 and 2016.
^d Based on October, November, and December data only.
R=Revised. —=No data reported. W=Value withheld to avoid disclosure of individual company data.
Notes: • See "Landed Costs" in Glossary, and Note 4, "Crude Oil Landed Costs," at end of section. • Values for the current two months are preliminary. • Through 1980, prices reflect the period of reporting; beginning in 1981, prices

reflect the period of loading. • Annual averages are averages of the monthly prices, including prices not published, weighted by volume. • Cargoes that are purchased on a "netback" basis, or under similar contractual arrangements whereby the actual purchase price is not established at the time the crude oil is acquired for importation into the United States, are not included in the published data until the actual prices have been determined and reported. • U.S. geographic coverage is the 50 states and the District of Columbia.
Web Page: See <http://www.eia.gov/totalenergy/data/monthly/#prices> (Excel and CSV files) for all available annual and monthly data beginning in 1973.
Sources: • **October 1973–September 1977:** Federal Energy Administration, Form FEA-F701-M-0, "Transfer Pricing Report." • **October 1977–December 1977:** U.S. Energy Information Administration (EIA), Form FEA-F701-M-0, "Transfer Pricing Report." • **1978–2007:** EIA, *Petroleum Marketing Annual 2008*, Table 22. • **2008 forward:** EIA, *Petroleum Marketing Monthly*, June 2024, Table 22, and EIA, Petroleum Data Tables.

Table 9.4 Retail Motor Gasoline and On-Highway Diesel Fuel Prices

(Dollars^a per Gallon, Including Taxes)

	Platt's / Bureau of Labor Statistics Data				U.S. Energy Information Administration Data			
	Motor Gasoline by Grade				Regular Motor Gasoline by Area Type			On-Highway Diesel Fuel
	Leaded Regular	Unleaded Regular	Unleaded Premium ^b	All Grades ^c	Conventional Gasoline Areas ^d	Reformulated Gasoline Areas ^e	All Areas	
1950 Average	0.268	NA	NA	NA	--	--	--	--
1955 Average	.291	NA	NA	NA	--	--	--	--
1960 Average	.311	NA	NA	NA	--	--	--	--
1965 Average	.312	NA	NA	NA	--	--	--	--
1970 Average	.357	NA	NA	NA	--	--	--	--
1975 Average	.567	NA	NA	NA	--	--	--	--
1980 Average	1.191	1.245	NA	1.221	--	--	--	--
1985 Average	1.115	1.202	1.340	1.196	--	--	--	--
1990 Average	1.149	1.164	1.349	1.217	NA	NA	NA	NA
1995 Average	--	1.147	1.336	1.205	1.103	1.163	1.111	1.109
2000 Average	--	1.510	1.693	1.563	1.462	1.543	1.484	1.491
2005 Average	--	2.295	2.491	2.338	2.240	2.335	2.270	2.402
2010 Average	--	2.788	3.047	2.836	2.742	2.864	2.782	2.992
2011 Average	--	3.527	3.792	3.577	3.476	3.616	3.521	3.840
2012 Average	--	3.644	3.922	3.695	3.552	3.757	3.618	3.968
2013 Average	--	3.526	3.843	3.584	3.443	3.635	3.505	3.922
2014 Average	--	3.367	3.713	3.425	3.299	3.481	3.358	3.825
2015 Average	--	2.448	2.866	2.510	2.334	2.629	2.429	2.707
2016 Average	--	2.142	2.610	2.204	2.070	2.296	2.143	2.304
2017 Average	--	2.408	2.911	2.469	2.333	2.586	2.415	2.650
2018 Average	--	2.735	3.270	2.794	2.631	2.904	2.719	3.178
2019 Average	--	2.636	3.212	2.698	2.501	2.827	2.604	3.056
2020 Average	--	2.174	2.791	2.242	2.074	2.370	2.168	2.551
2021 Average	--	3.051	3.692	3.133	2.908	3.224	3.008	3.287
2022 January	--	3.413	4.102	3.500	3.187	3.595	3.315	3.724
February	--	3.592	4.244	3.675	3.400	3.773	3.517	4.032
March	--	4.312	5.015	4.401	4.078	4.535	4.222	5.105
April	--	4.271	5.037	4.369	3.960	4.435	4.109	5.120
May	--	4.604	5.318	4.695	4.272	4.818	4.444	5.571
June	--	5.058	5.774	5.149	4.764	5.291	4.929	5.754
July	--	4.667	5.459	4.768	4.413	4.879	4.559	5.486
August	--	4.101	4.916	4.205	3.822	4.307	3.975	5.013
September	--	3.881	4.732	3.990	3.563	3.998	3.700	4.993
October	--	4.016	4.914	4.130	3.637	4.197	3.815	5.211
November	--	3.853	4.679	3.958	3.530	4.021	3.685	5.255
December	--	3.356	4.167	3.459	3.084	3.486	3.210	4.714
Average	--	4.094	4.863	4.192	3.803	4.274	3.951	4.989
2023 January	--	3.452	4.192	3.555	3.254	3.523	3.339	4.576
February	--	3.514	4.287	3.622	3.304	3.573	3.389	4.413
March	--	3.551	4.339	3.660	3.316	3.655	3.422	4.211
April	--	3.735	4.485	3.839	3.493	3.843	3.603	4.099
May	--	3.685	4.468	3.794	3.432	3.824	3.555	3.915
June	--	3.712	4.497	3.821	3.446	3.844	3.571	3.802
July	--	3.732	4.526	3.842	3.477	3.860	3.597	3.882
August	--	3.955	4.740	4.064	3.727	4.086	3.840	4.370
September	--	3.988	4.844	4.107	3.690	4.155	3.836	4.563
October	--	3.782	4.701	3.910	3.439	3.991	3.613	4.507
November	--	3.500	4.385	3.623	3.172	3.634	3.318	4.254
December	--	3.289	4.162	3.411	3.014	3.393	3.134	3.972
Average	--	3.658	4.469	3.771	3.397	3.783	3.519	4.214
2024 January	--	3.221	4.053	3.353	2.957	3.331	3.075	3.854
February	--	3.359	4.162	3.486	3.102	3.446	3.212	4.044
March	--	3.581	4.379	3.707	3.318	3.657	3.426	4.022
April	--	3.776	4.604	3.907	3.466	3.922	3.611	4.002
May	--	3.755	4.580	3.885	3.459	3.916	3.603	3.822

^a Prices are not adjusted for inflation. See "Nominal Dollars" in Glossary.
^b The 1981 average (available in Web file) is based on September through December data only.
^c Also includes grades of motor gasoline not shown separately.
^d Any area that does not require the sale of reformulated gasoline.
^e "Reformulated Gasoline Areas" are ozone nonattainment areas designated by the U.S. Environmental Protection Agency that require the use of reformulated gasoline (RFG). Areas are reclassified each time a shift in or out of an RFG program occurs due to federal or state regulations.
 NA=Not available. --=Not applicable.
 Notes: • See Note 5, "Motor Gasoline Prices," at end of section. • See "Motor Gasoline Grades," "Motor Gasoline, Conventional," "Motor Gasoline, Oxygenated," and "Motor Gasoline, Reformulated" in Glossary. • Geographic coverage: for columns 1-4, current coverage is 85 urban areas; for columns 5-7, coverage is the 50 states and the District of Columbia; for column 8, coverage is the 48 contiguous

states and the District of Columbia.
 Web Page: See <http://www.eia.gov/totalenergy/data/monthly/#prices> (Excel and CSV files) for all available annual data beginning in 1949 and monthly data beginning in 1973.
 Sources: • **Motor Gasoline by Grade, Monthly Data: October 1973 forward**—U.S. Department of Labor, Bureau of Labor Statistics (BLS), *U.S. City Average Gasoline Prices*. • **Motor Gasoline by Grade, Annual Data: 1949-1973**—Platt's Oil Price Handbook and Oilmanac, 1974, 51st Edition. **1974 forward**—calculated by the U.S. Energy Information Administration (EIA) as simple averages of the BLS monthly data. • **Regular Motor Gasoline by Area Type:** EIA, calculated as simple averages of weighted weekly estimates from "Weekly U.S. Retail Gasoline Prices, Regular Grade." • **On-Highway Diesel Fuel:** EIA, calculated as simple averages of weighted weekly estimates from "Weekly Retail On-Highway Diesel Prices."

Table 9.5 Refiner Prices of Residual Fuel Oil

(Dollars^a per Gallon, Excluding Taxes)

	Residual Fuel Oil Sulfur Content Less Than or Equal to 1%		Residual Fuel Oil Sulfur Content Greater Than 1%		Average	
	Sales for Resale	Sales to End Users	Sales for Resale	Sales to End Users	Sales for Resale	Sales to End Users
1978 Average	0.293	0.314	0.245	0.275	0.263	0.298
1980 Average608	.675	.479	.523	.528	.607
1985 Average610	.644	.560	.582	.577	.610
1990 Average472	.505	.372	.400	.413	.444
1995 Average383	.436	.338	.377	.363	.392
2000 Average627	.708	.512	.566	.566	.602
2005 Average	1.115	1.168	.842	.974	.971	1.048
2006 Average	1.202	1.342	1.085	1.173	1.136	1.218
2007 Average	1.406	1.436	1.314	1.350	1.350	1.374
2008 Average	1.918	2.144	1.843	1.889	1.866	1.964
2009 Average	1.337	1.413	1.344	1.306	1.342	1.341
2010 Average	1.756	1.920	1.679	1.619	1.697	1.713
2011 Average	2.389	2.736	2.316	2.257	2.336	2.401
2012 Average	2.548	3.025	2.429	2.433	2.457	2.592
2013 Average	2.363	2.883	2.249	2.353	2.278	2.482
2014 Average	2.153	2.694	1.996	2.221	2.044	2.325
2015 Average971	1.529	.999	1.227	.996	1.285
2016 Average736	1.138	.746	.897	.745	.945
2017 Average	1.112	W	1.117	1.237	1.116	1.287
2018 Average	1.397	W	1.466	1.587	1.463	1.662
2019 Average	1.649	W	1.391	1.510	1.428	1.584
2020 January	1.788	W	1.526	1.634	1.675	1.939
February	1.673	W	1.336	1.557	1.540	1.735
March	1.188	W	.993	1.146	1.121	1.371
April796	W	.639	.942	.733	.976
May792	W	NA	.727	.775	.817
June	1.018	W	1.013	.894	1.017	.949
July	1.153	W	1.089	.981	1.137	1.071
August	1.189	W	1.068	1.026	1.135	1.224
September	1.098	W	1.000	1.035	1.066	1.200
October	1.078	W	.996	1.071	1.041	1.151
November	1.164	W	1.098	1.068	1.145	1.145
December	1.351	W	1.266	1.193	1.320	1.290
Average	1.186	W	1.066	1.090	1.143	1.246
2021 January	1.491	W	1.352	1.344	1.432	1.462
February	1.583	W	1.429	1.469	1.518	1.617
March	1.780	W	1.558	1.590	1.683	1.766
April	1.780	W	1.534	1.556	1.686	1.756
May	1.828	W	1.628	1.552	1.736	1.760
June	1.909	W	1.650	1.608	1.783	1.867
July	1.852	W	1.766	1.721	1.818	1.969
August	1.842	W	1.674	1.666	1.776	1.901
September	1.913	W	1.768	1.748	1.845	1.950
October	2.124	W	1.964	1.876	2.069	2.091
November	2.065	W	1.834	1.827	1.927	2.141
December	1.940	2.282	1.766	1.726	1.861	2.090
Average	1.849	W	1.669	1.650	1.770	1.864
2022 January	2.210	2.342	1.966	1.871	2.085	2.160
February	2.415	NA	2.085	2.106	2.274	2.432
March	2.932	NA	2.423	2.478	2.689	2.867

^a Prices are not adjusted for inflation. See "Nominal Dollars" in Glossary.

NA=Not available. W=Value withheld to avoid disclosure of individual company data.

Notes: • Sales for resale are those made to purchasers other than ultimate consumers. Sales to end users are those made directly to ultimate consumers, including bulk consumers (such as agriculture, industry, and electric utilities) and commercial consumers. • Values for the current month are preliminary. • Through 1982, prices are U.S. Energy Information Administration (EIA)

estimates. See Note 6, "Historical Petroleum Prices," at end of section.

• Geographic coverage is the 50 states and the District of Columbia.

Web Page: See <http://www.eia.gov/totalenergy/data/monthly/#prices> (Excel and CSV files) for all available annual data beginning in 1978 and monthly data beginning in 1982.

Sources: • **1978–2007:** EIA, *Petroleum Marketing Annual 2007*, Table 17.

• **2008 forward:** EIA, *Petroleum Marketing Monthly*, July 2022, Table 16.

This table has not been updated due to the data are not available in Petroleum Marketing Monthly.

Table 9.6 Refiner Prices of Petroleum Products for Resale

(Dollars^a per Gallon, Excluding Taxes)

	Finished Motor Gasoline ^b	Finished Aviation Gasoline	Kerosene-Type Jet Fuel	Kerosene	No. 2 Fuel Oil	No. 2 Diesel Fuel	Propane (Consumer Grade)
1978 Average	0.434	0.537	0.386	0.404	0.369	0.365	0.237
1980 Average	.941	1.128	.868	.864	.803	.801	.415
1985 Average	.835	1.130	.794	.874	.776	.772	.398
1990 Average	.786	1.063	.773	.839	.697	.694	.386
1995 Average	.626	.975	.539	.580	.511	.538	.344
2000 Average	.963	1.330	.880	.969	.886	.898	.595
2005 Average	1.670	2.076	1.723	1.757	1.623	1.737	.933
2006 Average	1.969	2.490	1.961	2.007	1.834	2.012	1.031
2007 Average	2.182	2.758	2.171	2.249	2.072	2.203	1.194
2008 Average	2.586	3.342	3.020	2.851	2.745	2.994	1.437
2009 Average	1.767	2.480	1.719	1.844	1.657	1.713	.921
2010 Average	2.165	2.874	2.185	2.299	2.147	2.214	1.212
2011 Average	2.867	3.739	3.014	3.065	2.907	3.034	1.467
2012 Average	2.929	3.919	3.080	3.163	3.031	3.109	1.033
2013 Average	2.812	3.869	2.953	3.084	2.966	3.028	1.048
2014 Average	2.618	3.687	2.763	2.882	2.741	2.812	1.165
2015 Average	1.726	2.764	1.592	1.735	1.565	1.667	.555
2016 Average	1.454	2.404	1.295	1.383	1.239	1.378	.523
2017 Average	1.689	2.682	1.603	1.730	1.600	1.691	.800
2018 Average	1.980	3.006	2.073	2.160	2.002	2.130	.877
2019 Average	1.858	2.842	1.929	2.017	1.895	1.958	.622
2020 January	1.743	2.752	1.891	2.008	1.863	1.858	.557
February	1.669	2.698	1.613	1.802	1.627	1.671	.530
March	1.127	2.279	1.189	1.115	1.238	1.278	.410
April	.645	1.590	.703	.837	.872	.908	.378
May	1.049	1.869	.690	.848	.795	.878	.454
June	1.311	2.134	1.002	1.099	1.002	1.135	.514
July	1.380	2.253	1.144	1.172	1.152	1.254	.507
August	1.389	2.219	1.162	1.250	1.179	1.275	.536
September	1.354	2.246	1.076	1.215	1.091	1.195	.516
October	1.312	2.217	1.107	1.293	1.089	1.215	.597
November	1.287	2.123	1.180	1.322	1.156	1.315	.630
December	1.394	2.289	1.353	1.585	1.341	1.475	.725
Average	1.330	2.233	1.295	1.310	1.246	1.286	.535
2021 January	1.575	2.482	1.456	1.688	1.481	1.580	.922
February	1.784	2.659	1.599	1.939	1.667	1.806	1.032
March	2.011	2.978	1.720	1.854	1.726	1.956	.985
April	2.055	3.018	1.688	1.816	1.700	1.911	.849
May	2.181	3.107	1.790	1.800	1.806	2.072	.824
June	2.252	3.190	1.871	1.907	1.927	2.147	.950
July	2.337	3.337	1.946	1.940	1.931	2.182	1.075
August	2.302	3.299	1.922	1.899	1.885	2.146	1.110
September	2.310	3.248	2.008	2.109	2.041	2.240	1.280
October	2.494	3.367	2.281	2.434	2.356	2.504	1.460
November	2.484	3.410	2.283	2.405	2.267	2.454	1.329
December	2.304	3.154	2.145	2.272	2.111	2.273	1.140
Average	2.193	3.133	1.914	2.069	1.876	2.116	1.087
2022 January	2.423	3.373	2.422	2.655	2.438	2.550	1.249
February	2.639	3.684	2.655	2.916	2.742	2.830	1.376
March	3.232	4.088	3.285	3.612	3.479	3.582	1.483

^a Prices are not adjusted for inflation. See "Nominal Dollars" in Glossary.

^b See Note 5, "Motor Gasoline Prices," at end of section.

Notes: • Sales for resale are those made to purchasers other than ultimate consumers. Sales to end users are shown in Table 9.7; they are sales made directly to ultimate consumers, including bulk consumers (such as agriculture, industry, and electric utilities) and residential and commercial consumers. • Values for the current month are preliminary. • Through 1982, prices are U.S. Energy Information Administration (EIA) estimates. See Note 6, "Historical Petroleum

Prices," at end of section. • Geographic coverage is the 50 states and the District of Columbia.

Web Page: See <http://www.eia.gov/totalenergy/data/monthly/#prices> (Excel and CSV files) for all available annual data beginning in 1978 and monthly data beginning in 1982.

Sources: • **1978–2007:** EIA, *Petroleum Marketing Annual 2007*, Table 4. • **2008 forward:** EIA, *Petroleum Marketing Monthly*, July 2022, Table 4.

This table has not been updated due to the data are not available in Petroleum Marketing Monthly.

Table 9.7 Refiner Prices of Petroleum Products to End Users(Dollars^a per Gallon, Excluding Taxes)

	Finished Motor Gasoline ^b	Finished Aviation Gasoline	Kerosene-Type Jet Fuel	Kerosene	No. 2 Fuel Oil	No. 2 Diesel Fuel	Propane (Consumer Grade)
1978 Average	0.484	0.516	0.387	0.421	0.400	0.377	0.335
1980 Average	1.035	1.084	.868	.902	.788	.818	.482
1985 Average912	1.201	.796	1.030	.849	.789	.717
1990 Average883	1.120	.766	.923	.734	.725	.745
1995 Average765	1.005	.540	.589	.562	.560	.492
2000 Average	1.106	1.306	.899	1.123	.927	.935	.603
2005 Average	1.829	2.231	1.735	1.957	1.705	1.786	1.089
2006 Average	2.128	2.682	1.998	2.244	1.982	2.096	1.358
2007 Average	2.345	2.849	2.165	2.263	2.241	2.267	1.489
2008 Average	2.775	3.273	3.052	3.283	2.986	3.150	1.892
2009 Average	1.888	2.442	1.704	2.675	1.962	1.834	1.220
2010 Average	2.301	3.028	2.201	3.063	2.462	2.314	1.481
2011 Average	3.050	3.803	3.054	3.616	3.193	3.117	1.709
2012 Average	3.154	3.971	3.104	3.843	3.358	3.202	1.139
2013 Average	3.049	3.932	2.979	3.842	3.335	3.122	1.028
2014 Average	2.855	3.986	2.772	W	3.329	2.923	1.097
2015 Average	2.003	W	1.629	W	2.016	1.819	.481
2016 Average	1.730	W	1.319	W	1.716	1.511	.498
2017 Average	1.976	W	1.629	W	2.010	1.811	.772
2018 Average	2.303	W	2.119	3.113	2.380	2.256	.925
2019 Average	2.245	W	1.970	W	2.269	2.114	.603
2020 January	2.150	W	1.958	W	2.328	2.002	.502
February	2.060	W	1.667	W	2.113	1.835	.469
March	1.862	W	1.257	W	1.813	1.486	.378
April	1.490	W	.740	W	1.220	1.137	.368
May	1.598	W	.728	W	1.162	1.130	.421
June	1.768	W	1.046	3.321	1.338	1.354	.515
July	1.806	2.761	1.175	3.059	1.394	1.431	.518
August	1.814	2.805	1.188	3.163	1.464	1.456	.541
September	1.804	2.613	1.110	W	1.411	1.386	.508
October	1.773	2.495	1.134	W	1.360	1.400	.548
November	1.736	2.485	1.216	W	1.760	1.482	.577
December	1.828	2.674	1.395	W	2.004	1.624	.697
Average	1.829	2.685	1.293	W	1.660	1.486	.502
2021 January	1.986	2.829	1.485	W	2.103	1.713	.908
February	2.201	3.148	1.642	W	2.173	1.933	.972
March	2.442	3.364	1.763	W	2.323	2.111	.964
April	2.493	3.363	1.724	W	2.185	2.090	.851
May	2.683	3.447	1.822	W	2.291	2.177	.833
June	3.000	3.492	1.906	W	2.341	2.228	.966
July	3.105	W	1.981	2.860	2.505	2.282	1.096
August	3.146	W	1.965	W	2.395	2.266	1.122
September	3.143	W	2.032	2.817	2.387	2.323	1.296
October	3.201	3.783	2.303	3.425	2.678	2.561	1.459
November	3.318	3.778	2.309	3.799	2.651	2.542	1.292
December	3.283	W	2.168	3.279	2.760	2.374	1.098
Average	2.569	3.469	1.954	W	2.413	2.203	1.088
2022 January	3.145	3.689	2.451	3.822	3.169	2.648	1.225
February	3.313	W	2.653	4.042	3.269	2.900	1.365
March	3.991	4.581	3.326	4.689	3.924	3.689	1.442

^a Prices are not adjusted for inflation. See "Nominal Dollars" in Glossary.^b See Note 5, "Motor Gasoline Prices," at end of section.

W=Value withheld to avoid disclosure of individual company data.

Notes: • Sales to end users are those made directly to ultimate consumers, including bulk consumers (such as agriculture, industry, and electric utilities) and residential and commercial consumers. Sales for resale are shown in Table 9.6; they are sales made to purchasers other than ultimate consumers. • Values for the current month are preliminary. • Through 1982, prices are U.S. Energy

Information Administration (EIA) estimates. See Note 6, "Historical Petroleum Prices," at end of section. • Geographic coverage is the 50 states and the District of Columbia.

Web Page: See <http://www.eia.gov/totalenergy/data/monthly/#prices> (Excel and CSV files) for all available annual data beginning in 1978 and monthly data beginning in 1982.

Sources: • **1978–2007:** EIA, *Petroleum Marketing Annual 2007*, Table 2.

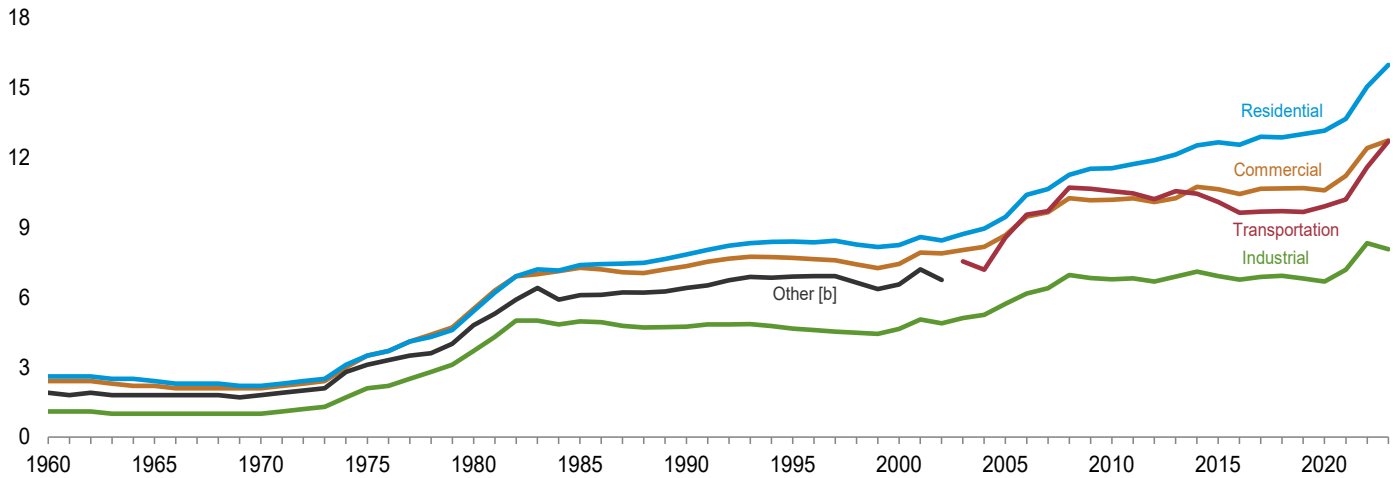
• **2008 forward:** EIA, *Petroleum Marketing Monthly*, July 2022, Table 2.

This table has not been updated due to the data are not available in Petroleum Marketing Monthly.

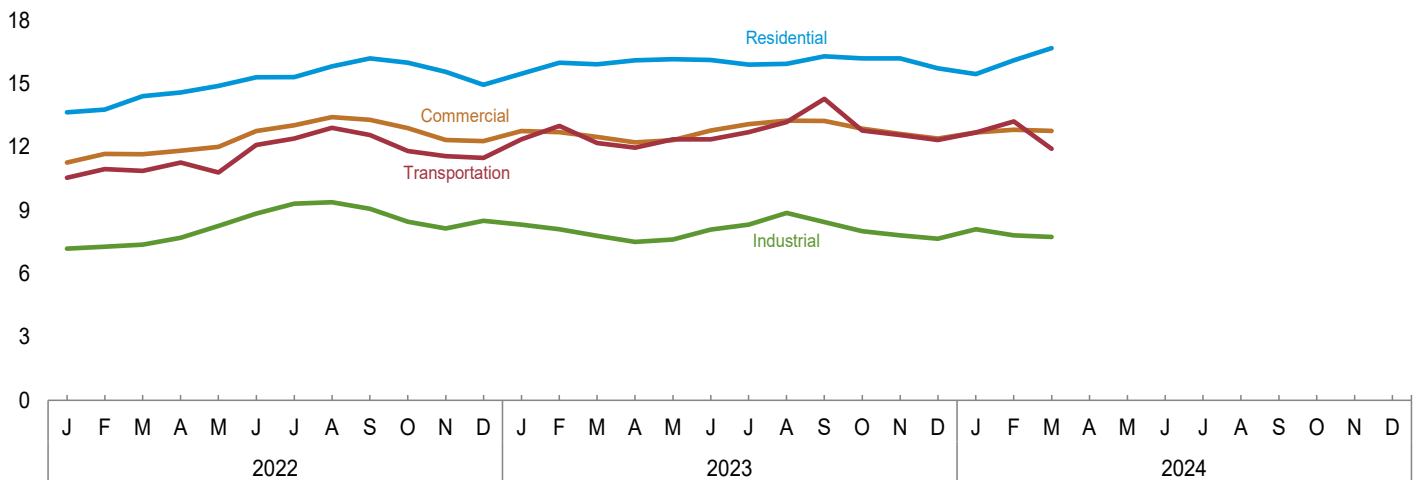
Figure 9.2 Average Prices of Electricity to Ultimate Customers

(Cents [a] per Kilowatthour)

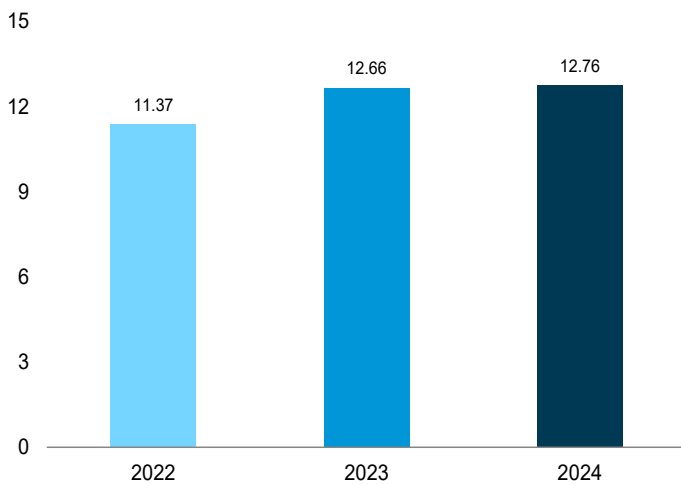
By Sector, 1960–2023



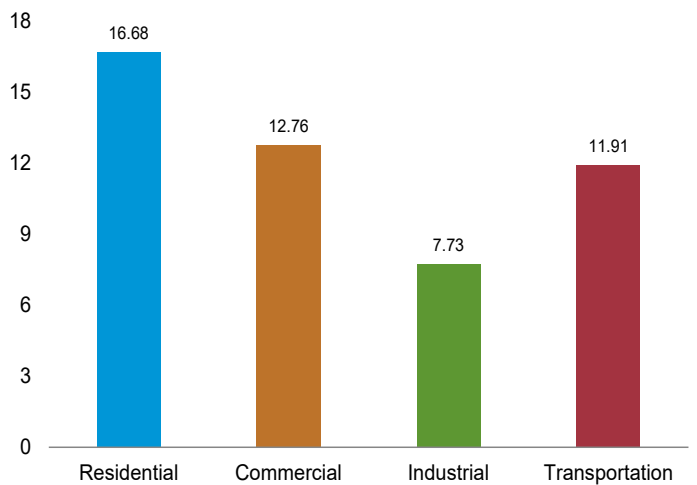
By Sector, Monthly



Total, January–March



By Sector, March 2024



[a] Prices are not adjusted for inflation. See “Nominal Dollars” in Glossary.
 [b] Public street and highway lighting, interdepartmental sales, other sales to public authorities, agricultural and irrigation, and transportation including railroads and railways.

Note: Includes taxes.
 Web Page: <http://www.eia.gov/totalenergy/data/monthly/#prices>.
 Source: Table 9.8.

Table 9.8 Average Prices of Electricity to Ultimate Customers
(Cents^a per Kilowatthour, Including Taxes)

	Residential	Commercial ^b	Industrial ^c	Transportation ^d	Other ^e	Total
1960 Average	2.60	2.40	1.10	NA	1.90	1.80
1965 Average	2.40	2.20	1.00	NA	1.80	1.70
1970 Average	2.20	2.10	1.00	NA	1.80	1.70
1975 Average	3.50	3.50	2.10	NA	3.10	2.90
1980 Average	5.40	5.50	3.70	NA	4.80	4.70
1985 Average	7.39	7.27	4.97	NA	6.09	6.44
1990 Average	7.83	7.34	4.74	NA	6.40	6.57
1995 Average	8.40	7.69	4.66	NA	6.88	6.89
2000 Average	8.24	7.43	4.64	NA	6.56	6.81
2005 Average	9.45	8.67	5.73	8.57	--	8.14
2010 Average	11.54	10.19	6.77	10.56	--	9.83
2011 Average	11.72	10.24	6.82	10.46	--	9.90
2012 Average	11.88	10.09	6.67	10.21	--	9.84
2013 Average	12.13	10.26	6.89	10.55	--	10.07
2014 Average	12.52	10.74	7.10	10.45	--	10.44
2015 Average	12.65	10.64	6.91	10.09	--	10.41
2016 Average	12.55	10.43	6.76	9.63	--	10.27
2017 Average	12.89	10.66	6.88	9.68	--	10.48
2018 Average	12.87	10.67	6.92	9.70	--	10.53
2019 Average	13.01	10.68	6.81	9.66	--	10.54
2020 Average	13.15	10.59	6.67	9.90	--	10.59
2021 Average	13.66	11.22	7.18	10.20	--	11.10
2022 January	13.64	11.26	7.19	10.54	--	11.24
February	13.76	11.66	7.28	10.95	--	11.42
March	14.41	11.65	7.37	10.87	--	11.48
April	14.57	11.82	7.70	11.26	--	11.56
May	14.89	12.00	8.25	10.79	--	11.98
June	15.30	12.75	8.85	12.10	--	12.75
July	15.31	13.02	9.31	12.39	--	13.12
August	15.82	13.41	9.38	12.90	--	13.44
September	16.19	13.28	9.06	12.57	--	13.31
October	15.99	12.89	8.45	11.81	--	12.66
November	15.55	12.33	8.14	11.56	--	12.30
December	14.94	12.28	8.50	11.48	--	12.40
Average	15.04	12.41	8.32	11.59	--	12.36
2023 January	15.47	12.75	8.32	12.36	--	12.78
February	15.98	12.70	8.10	12.99	--	12.76
March	15.91	12.48	7.79	12.18	--	12.43
April	16.10	12.21	7.50	11.96	--	12.18
May	16.15	12.32	7.62	12.36	--	12.25
June	16.11	12.77	8.08	12.36	--	12.75
July	15.89	13.07	8.32	12.69	--	13.10
August	15.93	13.24	8.87	13.18	--	13.30
September	16.29	13.23	8.44	14.27	--	13.19
October	16.20	12.86	8.01	12.77	--	12.59
November	16.19	12.62	7.81	12.56	--	12.50
December	15.73	12.39	7.66	12.33	--	12.41
Average	15.98	12.74	8.06	12.70	--	12.72
2024 January	15.45	12.68	8.10	12.68	--	12.73
February	16.10	12.81	7.81	13.20	--	12.80
March	16.68	12.76	7.73	11.91	--	12.73
3-Month Average	16.01	12.75	7.88	12.56	--	12.76
2022 3-Month Average	15.77	12.64	8.06	12.51	--	12.66
2021 3-Month Average	13.91	11.52	7.28	10.79	--	11.37

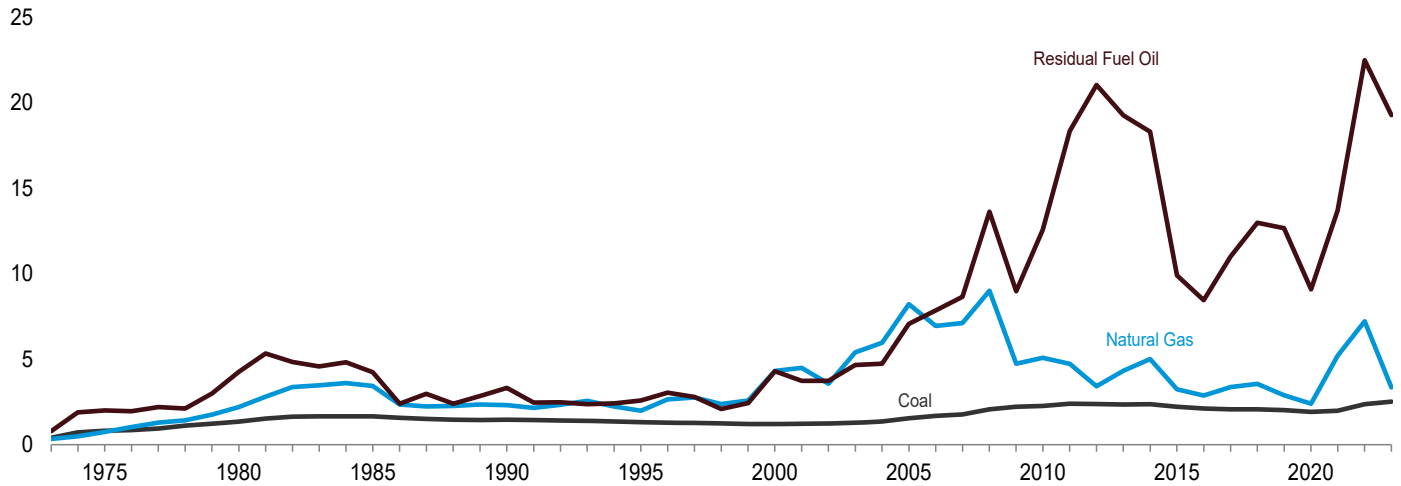
^a Prices are not adjusted for inflation. See "Nominal Price" in Glossary.
^b Commercial sector. For 1960–2002, prices exclude public street and highway lighting, interdepartmental sales, and other sales to public authorities.
^c Industrial sector. For 1960–2002, prices exclude agriculture and irrigation.
^d Prices for public railroads and railway systems only.
^e Public street and highway lighting, interdepartmental sales, other sales to public authorities, agriculture and irrigation, and transportation including railroads and railways.
 NA=Not available. --=Not applicable.
 Notes: • Beginning in 2003, the category "Other" has been replaced by "Transportation," and the categories "Commercial" and "Industrial" have been redefined. • Prices are calculated by dividing revenue by sales. Revenue may not correspond to sales for a particular month because of energy service provider billing and accounting procedures. That lack of correspondence could result in uncharacteristic increases or decreases in the monthly prices. • Prices include state and local taxes, energy or demand charges, customer service charges, environmental surcharges, franchise fees, fuel adjustments, and other miscellaneous charges applied to end-use customers during normal billing operations. Prices do not include deferred charges, credits, or other adjustments, such as fuel or revenue from purchased power, from previous reporting periods. • Through 1979, data are for Classes A and B privately owned electric utilities only. (Class A utilities are those with operating revenues of \$2.5 million or more; Class B

utilities are those with operating revenues between \$1 million and \$2.5 million.) For 1980–1982, data are for selected Class A utilities whose electric operating revenues were \$100 million or more during the previous year. For 1983, data are for a selected sample of electric utilities. Beginning in 1984, data are for a census of electric utilities. Beginning in 1996, data also include energy service providers selling to retail customers. • See Note 7, "Electricity Prices to Ultimate Customers," at end of section for plant coverage, and for information on preliminary and final values. • Geographic coverage is the 50 states and the District of Columbia.
 Web Page: See <http://www.eia.gov/totalenergy/data/monthly/#prices> (Excel and CSV files) for all available annual data beginning in 1960 and monthly data beginning in 1976.
 Sources: • **1960–September 1977:** Federal Power Commission, Form FPC-5, "Monthly Statement of Electric Operating Revenues and Income." • **October 1977–February 1980:** Federal Energy Regulatory Commission (FERC), Form FPC-5, "Monthly Statement of Electric Operating Revenues and Income." • **March 1980–1982:** FERC, Form FERC-5, "Electric Utility Company Monthly Statement." • **1983:** U.S. Energy Information Administration (EIA), Form EIA-826, "Electric Utility Company Monthly Statement." • **1984–2010:** EIA, Form EIA-861, "Annual Electric Power Industry Report." • **2011 forward:** EIA, *Electric Power Monthly*, May 2024, Table 5.3.

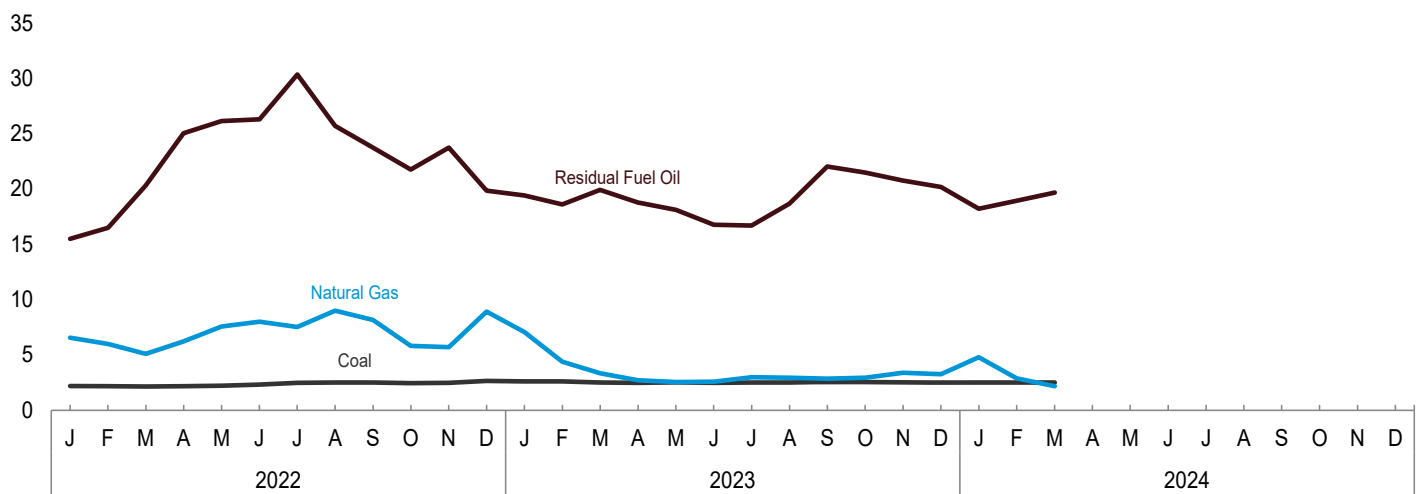
Figure 9.3 Cost of Fossil-Fuel Receipts at Electric Generating Plants

(Dollars [a] per Million Btu, Including Taxes)

Costs, 1973–2023

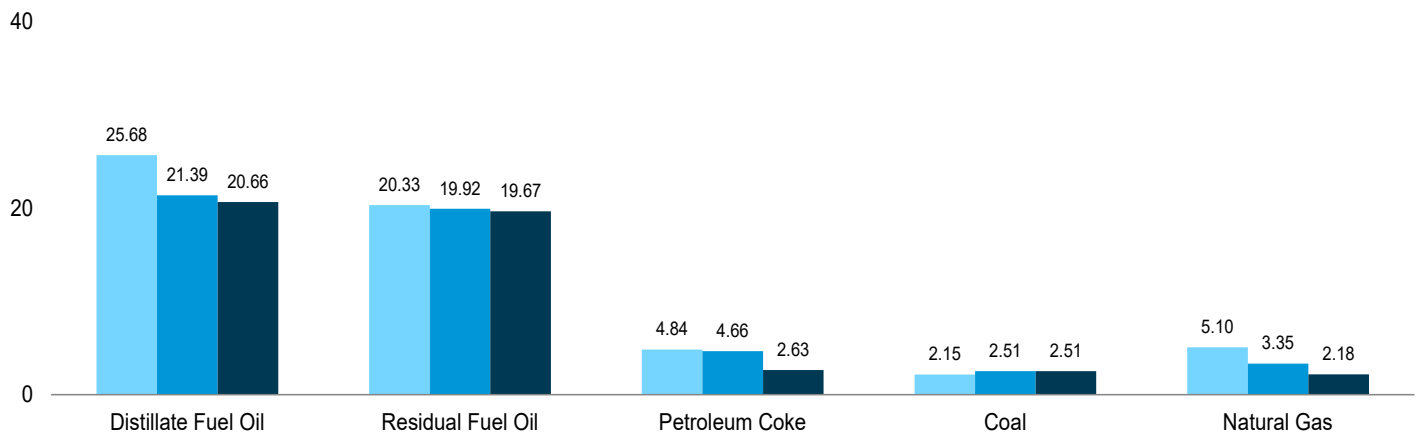


Costs, Monthly



By Fuel Type

■ March 2022 ■ March 2023 ■ March 2024



[a] Prices are not adjusted for inflation. See "Nominal Dollars" in Glossary.

Web Page: <http://www.eia.gov/totalenergy/data/monthly/#prices>.
Source: Table 9.9.

Table 9.9 Cost of Fossil-Fuel Receipts at Electric Generating Plants

(Dollars^a per Million Btu, Including Taxes)

	Coal	Petroleum				Natural Gas ^c	All Fossil Fuels ^f
		Residual Fuel Oil ^b	Distillate Fuel Oil ^c	Petroleum Coke	Total ^d		
1973 Average	0.41	0.79	NA	NA	0.80	0.34	0.48
1975 Average81	2.01	NA	NA	2.02	.75	1.04
1980 Average	1.35	4.27	NA	NA	4.35	2.20	1.93
1985 Average	1.65	4.24	NA	NA	4.32	3.44	2.09
1990 Average	1.45	3.32	5.38	.80	3.35	2.32	1.69
1995 Average	1.32	2.99	3.99	.65	2.57	1.98	1.45
2000 Average	1.25	3.73	5.34	.78	3.34	3.56	1.86
2005 Average^d	1.54	7.06	11.72	1.11	6.44	8.21	3.25
2006 Average	1.69	7.85	13.28	1.33	6.23	6.94	3.02
2007 Average	1.77	8.64	14.85	1.51	7.17	7.11	3.23
2008 Average	2.07	13.62	21.46	2.11	10.87	9.01	4.12
2009 Average	2.21	8.98	13.22	1.61	7.02	4.74	3.04
2014 Average	2.37	18.30	21.88	1.98	11.60	5.00	3.31
2015 Average	2.22	9.89	14.06	1.84	6.74	3.23	2.65
2016 Average	2.11	8.45	10.90	1.65	5.24	2.87	2.47
2017 Average	2.06	11.00	13.22	2.13	7.10	3.37	2.65
2018 Average	2.06	12.97	16.16	2.54	9.68	3.55	2.83
2019 Average	2.02	12.66	15.19	1.91	9.07	2.89	2.50
2020 Average	1.92	9.09	10.73	1.70	5.98	2.40	2.22
2021 Average	1.98	13.70	15.89	3.16	10.08	5.20	3.82
2022 January	2.20	15.49	20.10	4.32	13.85	6.56	4.74
February	2.17	16.49	20.79	4.24	14.29	6.00	4.32
March	2.15	20.33	25.68	4.84	14.61	5.10	3.75
April	2.18	25.06	28.32	4.80	16.05	6.21	4.40
May	2.23	26.15	30.12	4.97	16.38	7.57	5.25
June	2.32	26.30	33.02	4.50	20.01	8.01	5.86
July	2.47	30.36	27.38	4.65	19.30	7.53	5.78
August	2.51	25.72	26.90	5.02	16.86	9.00	6.54
September	2.51	23.76	25.57	2.32	17.20	8.15	5.81
October	2.46	21.76	27.81	3.37	17.08	5.80	4.37
November	2.48	23.74	29.28	3.84	16.75	5.71	4.38
December	2.65	19.86	23.17	4.19	16.72	8.92	6.38
Average	2.36	22.48	25.64	4.35	16.53	7.21	5.22
2023 January	2.60	19.41	24.14	4.54	17.17	7.07	5.19
February	2.60	18.61	22.91	4.80	15.76	4.39	3.71
March	2.51	19.92	21.39	4.66	14.13	3.35	3.05
April	2.48	18.77	20.78	4.70	13.42	2.69	2.69
May	2.52	18.11	19.90	3.14	15.49	2.54	2.61
June	2.47	16.78	19.08	3.48	14.81	2.58	2.60
July	2.49	16.70	19.61	3.62	14.02	2.97	2.86
August	2.50	18.68	22.78	3.39	15.71	2.92	2.82
September	2.54	22.05	23.92	3.76	16.85	2.86	2.82
October	2.54	21.49	23.96	3.84	17.51	2.93	2.86
November	2.52	20.77	21.53	3.60	16.21	3.38	3.11
December	2.49	20.18	18.19	3.39	14.52	3.27	3.06
Average	2.52	19.28	21.64	4.05	15.49	3.36	3.11
2024 January	2.49	18.22	19.73	2.65	17.56	4.80	4.02
February	2.49	18.94	20.82	2.63	16.51	2.88	2.80
March	2.51	19.67	20.66	2.63	17.34	2.18	2.38
3-Month Average	2.50	18.90	20.17	2.64	17.19	3.37	3.12
2022 3-Month Average	2.57	19.25	23.23	4.66	15.89	4.98	4.01
2021 3-Month Average	2.17	17.14	21.46	4.50	14.21	5.93	4.29

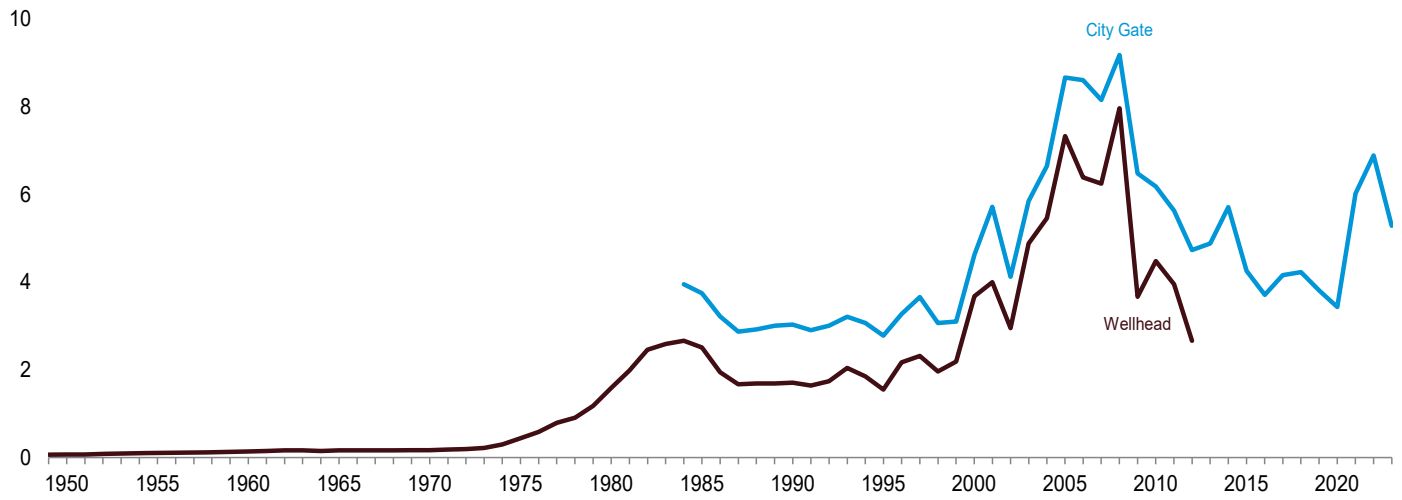
^a Prices are not adjusted for inflation. See "Nominal Dollars" in Glossary.
^b For 1973–2001, electric utility data are for heavy oil (fuel oil nos. 5 and 6, and small amounts of fuel oil no. 4).
^c For 1973–2001, electric utility data are for light oil (fuel oil nos. 1 and 2).
^d For all years, includes residual fuel oil and distillate fuel oil. For 1990 forward, also includes petroleum coke. For 1973–2012, also includes jet fuel, kerosene, and waste oil. For 1983–2012, also includes other petroleum, such as propane and refined motor oil.
^e Natural gas, plus a small amount of supplemental gaseous fuels. For 1973–2000, data also include a small amount of blast furnace gas and other gases derived from fossil fuels.
^f Weighted average of costs shown under "Coal," "Petroleum," and "Natural Gas."
^g Through 2001, data are for electric utilities only. Beginning in 2002, data also include independent power producers, and electric generating plants in the

commercial and industrial sectors.
 NA=Not available.
 Notes: • Receipts are purchases of fuel. • Yearly costs are averages of monthly values, weighted by quantities in Btu. • For this table, there are several breaks in the data series related to what plants and fuels are covered. Beginning in 2013, data cover all regulated generating plants; plus unregulated plants whose total fossil-fueled nameplate generating capacity is 50 megawatts or more for coal, and 200 megawatts or more for natural gas, residual fuel oil, distillate fuel oil, and petroleum coke. For data coverage before 2013, see EIA, *Electric Power Monthly*, Appendix C, Form EIA-923 notes, "Receipts and cost and quality of fossil fuels" section. • Geographic coverage is the 50 states and the District of Columbia.
 Web Page: See <http://www.eia.gov/totalenergy/data/monthly/#prices> (Excel and CSV files) for all available annual and monthly data beginning in 1973.
 Sources: See end of section.

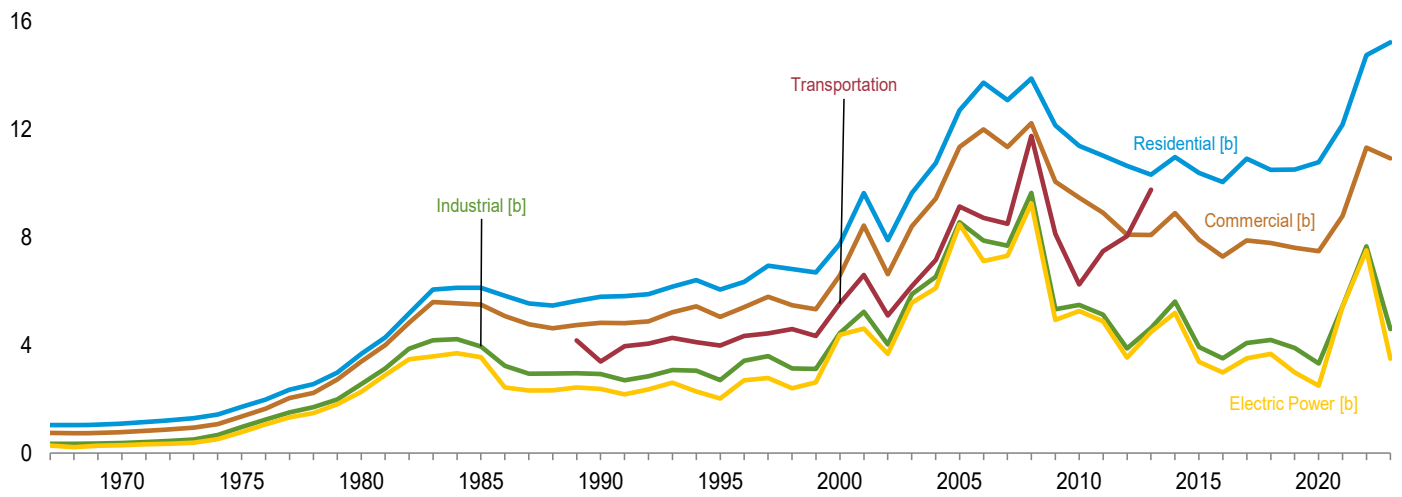
Figure 9.4 Natural Gas Prices

(Dollars [a] per Thousand Cubic Feet)

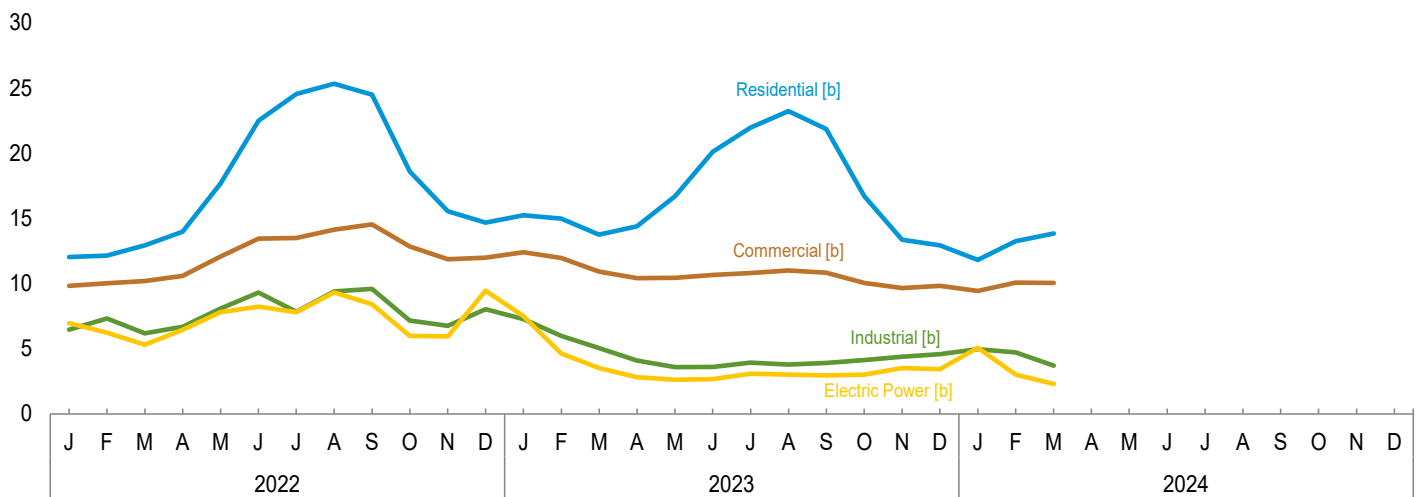
Wellhead and Citygate, 1949–2023



Consuming Sectors, 1967–2023



Consuming Sectors, Monthly



[a] Prices are not adjusted for inflation. See “Nominal Dollars” in Glossary.
 [b] Includes taxes.

Web Page: <http://www.eia.gov/totalenergy/data/monthly/#prices>.
 Source: Table 9.10.

Table 9.10 Natural Gas Prices
(Dollars^a per Thousand Cubic Feet)

	Wellhead Price ^f	City-gate Price ^g	Consuming Sectors ^b									
			Residential		Commercial ^c		Industrial ^d		Transportation	Electric Power ^e		
			Price ^h	Percentage of Sector ⁱ	Price ^h	Percentage of Sector ⁱ	Price ^h	Percentage of Sector ⁱ	Vehicle Fuel ^j Price ^h	Price ^h	Percentage of Sector ^{i,k}	
1950 Average	0.07	NA	NA	NA	NA	NA	NA	NA	NA	NA	NA	NA
1955 Average	.10	NA	NA	NA	NA	NA	NA	NA	NA	NA	NA	NA
1960 Average	.14	NA	NA	NA	NA	NA	NA	NA	NA	NA	NA	NA
1965 Average	.16	NA	NA	NA	NA	NA	NA	NA	NA	NA	NA	NA
1970 Average	.17	NA	1.09	NA	.77	NA	.37	NA	NA	.29	NA	NA
1975 Average	.44	NA	1.71	NA	1.35	NA	.96	NA	NA	.77	96.1	NA
1980 Average	1.59	NA	3.68	NA	3.39	NA	2.56	NA	NA	2.27	96.9	NA
1985 Average	2.51	3.75	6.12	NA	5.50	NA	3.95	68.8	NA	3.55	94.0	NA
1990 Average	1.71	3.03	5.80	99.2	4.83	86.6	2.93	35.2	3.39	2.38	76.8	NA
1995 Average	1.55	2.78	6.06	99.0	5.05	76.7	2.71	24.5	3.98	2.02	71.4	NA
2000 Average	3.68	4.62	7.76	92.6	6.59	63.9	4.45	19.8	5.54	4.38	50.5	NA
2005 Average	7.33	8.67	12.70	98.1	11.34	82.1	8.56	24.0	9.14	8.47	91.3	NA
2010 Average	4.48	6.18	11.39	97.4	9.47	77.5	5.49	18.0	6.25	5.27	100.8	NA
2011 Average	3.95	5.63	11.03	96.3	8.91	67.3	5.13	16.3	7.48	4.89	101.2	NA
2012 Average	E 2.66	4.73	10.65	95.8	8.10	65.2	3.88	16.2	8.04	3.54	95.5	NA
2013 Average	NA	4.88	10.32	95.7	8.08	65.8	4.64	16.6	9.76	4.49	94.9	NA
2014 Average	NA	5.71	10.97	95.5	8.90	65.8	5.62	15.9	NA	5.19	94.6	NA
2015 Average	NA	4.26	10.38	95.6	7.91	65.7	3.93	14.8	NA	3.38	94.6	NA
2016 Average	NA	3.71	10.05	95.8	7.28	64.8	3.51	14.9	NA	2.99	95.6	NA
2017 Average	NA	4.16	10.91	95.9	7.88	65.4	4.08	14.8	NA	3.51	95.4	NA
2018 Average	NA	4.23	10.50	96.0	7.79	65.8	4.19	14.5	NA	3.68	95.4	NA
2019 Average	NA	3.81	10.51	96.2	7.61	65.5	3.90	13.0	NA	2.99	96.5	NA
2020 Average	NA	3.43	10.78	96.3	7.48	64.6	3.32	13.2	NA	2.49	96.2	NA
2021 Average	NA	6.02	12.18	96.6	8.79	65.1	5.44	13.4	NA	5.43	96.1	NA
2022 January	NA	5.48	12.04	96.9	9.82	71.4	6.47	13.3	NA	6.96	96.2	NA
February	NA	5.77	12.14	96.7	10.02	69.9	7.32	13.8	NA	6.23	95.2	NA
March	NA	5.55	12.94	96.5	10.21	68.4	6.18	14.1	NA	5.31	95.7	NA
April	NA	6.53	13.97	96.2	10.60	65.4	6.68	13.9	NA	6.44	96.5	NA
May	NA	8.51	17.67	96.0	12.07	60.7	8.08	13.4	NA	7.80	97.0	NA
June	NA	9.77	22.50	96.2	13.45	57.5	9.30	13.3	NA	8.24	96.2	NA
July	NA	8.72	24.55	96.6	13.50	55.7	7.85	13.3	NA	7.80	96.2	NA
August	NA	10.31	25.34	96.8	14.14	55.0	9.40	13.0	NA	9.32	96.0	NA
September	NA	9.69	24.50	96.8	14.54	55.6	9.58	12.9	NA	8.41	96.0	NA
October	NA	6.79	18.61	96.9	12.84	60.1	7.16	13.1	NA	5.99	96.1	NA
November	NA	6.72	15.55	97.2	11.87	66.6	6.74	13.3	NA	5.95	95.4	NA
December	NA	8.12	14.68	97.1	11.99	70.2	8.04	13.5	NA	9.46	96.1	NA
Average	NA	6.89	14.75	96.7	11.32	65.8	7.66	13.4	NA	7.51	96.1	NA
2023 January	NA	7.15	15.25	96.8	12.41	70.2	7.27	13.6	NA	7.50	90.1	NA
February	NA	6.55	14.98	96.9	11.97	69.6	5.98	13.7	NA	4.64	89.4	NA
March	NA	5.28	13.76	96.9	10.93	68.7	5.05	13.3	NA	3.51	88.5	NA
April	NA	4.33	14.40	96.5	10.41	65.1	4.08	12.9	NA	2.81	87.9	NA
May	NA	4.17	16.70	96.2	10.44	60.7	3.59	13.0	NA	2.63	88.2	NA
June	NA	4.67	20.11	96.6	10.65	57.5	3.60	12.4	NA	2.67	86.8	NA
July	NA	5.04	21.98	96.8	10.82	55.6	3.93	12.5	NA	3.07	85.6	NA
August	NA	4.80	23.23	96.6	11.02	54.9	3.78	13.2	NA	3.02	86.2	NA
September	NA	5.03	21.86	96.7	10.84	55.9	3.90	12.5	NA	2.95	87.8	NA
October	NA	4.16	16.71	97.3	10.05	61.2	4.13	13.0	NA	3.02	88.1	NA
November	NA	4.36	13.37	97.1	9.66	66.1	4.40	13.8	NA	3.52	88.6	NA
December	NA	4.39	12.94	97.2	9.83	68.7	4.58	13.7	NA	3.42	90.5	NA
Average	NA	5.29	15.23	96.9	10.92	65.3	4.59	13.1	NA	3.50	87.9	NA
2024 January	NA	4.76	11.82	96.7	9.43	70.9	4.96	14.1	NA	5.07	88.4	NA
February	NA	4.52	13.25	97.1	10.06	68.9	4.71	14.4	NA	3.01	89.4	NA
March	NA	4.05	13.85	96.9	10.05	67.5	3.70	14.2	NA	2.29	88.9	NA
3-Month Average	NA	4.50	12.81	96.9	9.81	69.3	4.47	14.2	NA	3.55	86.9	NA
2022 3-Month Average	NA	6.39	14.72	96.9	11.81	69.5	6.12	13.5	NA	5.26	89.3	NA
2021 3-Month Average	NA	5.59	12.31	96.7	10.00	70.0	6.64	13.7	NA	6.22	95.7	NA

^a Prices are not adjusted for inflation. See "Nominal Dollars" in Glossary.

^b See Note 8, "Natural Gas Prices," at end of section.

^c Commercial sector, including commercial combined-heat-and-power (CHP) and commercial electricity-only plants. See Note 2, "Classification of Power Plants Into Energy-Use Sectors," at end of Section 7.

^d Industrial sector, including industrial combined-heat-and-power (CHP) and industrial electricity-only plants. See Note 2, "Classification of Power Plants Into Energy-Use Sectors," at end of Section 7.

^e The electric power sector comprises electricity-only and combined-heat-and-power (CHP) plants within the NAICS 22 category whose primary business is to sell electricity, or electricity and heat, to the public. Through 2001, data are for electric utilities only; beginning in 2002, data also include independent power producers.

^f See "Natural Gas Wellhead Price" in Glossary.

^g See "Citygate" in Glossary.

^h Includes taxes.

ⁱ The percentage of the sector's consumption in Table 4.3 for which price data are available. For details on how the percentages are derived, see Table 9.10 sources at end of section.

^j Much of the natural gas delivered for vehicle fuel represents deliveries to fueling stations that are used primarily or exclusively by fleet vehicles. Thus, the prices are often those associated with the cost of gas in the operation of fleet vehicles.

^k Percentages exceed 100% when reported natural gas receipts are greater than reported natural gas consumption—this can occur when combined-heat-and-power plants report fuel receipts related to non-electric generating activities.

NA=Not available. E=Estimate.

Notes: • Prices are for natural gas, plus a small amount of supplemental gaseous fuels. • Prices are intended to include all taxes. See Note 8, "Natural Gas Prices," at end of section. • Wellhead annual and year-to-date prices are simple averages of the monthly prices; all other annual and year-to-date prices are volume-weighted averages of the monthly prices. • Geographic coverage is the 50 states and the District of Columbia.

Web Page: See <http://www.eia.gov/totalenergy/data/monthly/#prices> (Excel and CSV files) for all available annual data beginning in 1949 and monthly data beginning in 1976.

Sources: See end of section.

Note 1. Crude Oil Refinery Acquisition Costs. Beginning with January 1981, refiner acquisition costs of crude oil are from data collected on U.S. Energy Information Administration (EIA) Form EIA-14, "Refiners' Monthly Cost Report." Those costs were previously published from data collected on Economic Regulatory Administration (ERA) Form ERA-49, "Domestic Crude Oil Entitlements Program Refiners Monthly Report." Form ERA-49 was discontinued with the decontrol of crude oil on January 28, 1981. Crude oil purchases and costs are defined for Form EIA-14 in accordance with conventions used for Form ERA-49. The respondents for the two forms are also essentially the same. However, due to possible different interpretations of the filing requirements and a different method for handling prior period adjustments, care must be taken when comparing the data collected on the two forms.

The refiner acquisition cost of crude oil is the average price paid by refiners for crude oil booked into their refineries in accordance with accounting procedures generally accepted and consistently and historically applied by the refiners concerned. Domestic crude oil is that oil produced in the United States or from the outer continental shelf as defined in 43 USC Section 1331. Imported crude oil is either that oil reported on Form ERA-51, "Transfer Pricing Report," or any crude oil that is not domestic oil. The composite cost is the weighted average of domestic and imported crude oil costs.

Crude oil costs and volumes reported on Form ERA-49 excluded unfinished oils but included the Strategic Petroleum Reserve (SPR). Crude oil costs and volumes reported on Federal Energy Administration (FEA) Form FEA-P110-M-1, "Refiners' Monthly Cost Allocation Report," included unfinished oils but excluded SPR. Imported averages derived from Form ERA-49 exclude oil purchased for SPR, whereas the composite averages derived from Form ERA-49 include SPR. None of the prices derived from Form EIA-14 include either unfinished oils or SPR.

Note 2. Crude Oil Domestic First Purchase Prices. The average domestic first purchase price represents the average price at which all domestic crude oil is purchased. Crude oil domestic first purchase prices were derived as follows: for 1949–1973, weighted average domestic first purchase values as reported by state agencies and calculated by the Bureau of Mines; for 1974 and 1975, weighted averages of a sample survey of major first purchasers' purchases; for 1976 forward, weighted averages of all first purchasers' purchases. The data series was previously called "Actual Domestic Wellhead Price."

Note 3. Crude Oil F.O.B. Costs. F.O.B. literally means "Free on Board." It denotes a transaction whereby the seller makes the product available with an agreement on a given port at a given price; it is the responsibility of the buyer to arrange for the transportation and insurance.

Note 4. Crude Oil Landed Costs. The landed cost of imported crude oil from selected countries does not represent the total cost of all imported crude. Prior to April 1975, imported crude costs to U.S. company-owned refineries in the Caribbean were not included in the landed cost, and costs of crude oil from countries that export only small amounts to the United States were also excluded. Beginning in April 1975, however, coverage was expanded to include U.S. company-owned refineries in the Caribbean. Landed costs do not include supplemental fees.

Note 5. Motor Gasoline Prices. Several different series of motor gasoline prices are published in this section. U.S. city average retail prices of motor gasoline by grade are calculated monthly by the Bureau of Labor Statistics during the development of the Consumer Price Index (CPI). These prices include all federal, state, and local taxes paid at the time of sale. Prior to 1977, prices were collected in 56 urban areas. From 1978 forward, prices are collected from a new sample of service stations in 85 urban areas selected to represent all urban consumers—about 80 percent of the total U.S. population. The service stations are selected initially, and on a replacement basis, in such a way that they represent the purchasing habits of the CPI population. Service stations in the current sample include those providing all types of service (i.e., full-, mini-, and self-serve).

Regular motor gasoline prices by area type are determined by EIA in a weekly survey of retail motor gasoline outlets (Form EIA-878, "Motor Gasoline Price Survey"). Prices include all federal, state, and local taxes paid at the time of sale. A representative sample of outlets by geographic area and size is randomly selected from a sampling frame of approximately 115,000 retail motor gasoline outlets. Monthly and annual prices are simple averages of weighted

weekly estimates from "Weekly U.S. Retail Gasoline Prices, Regular Grade." For more information on the survey methodology, see EIA, *Weekly Petroleum Status Report*, Appendix B, "Weekly Petroleum Price Surveys" section.

Refiner prices of finished motor gasoline for resale and to end users are determined by EIA in a monthly survey of refiners and gas plant operators (Form EIA-782A). The prices do not include any federal, state, or local taxes paid at the time of sale. Estimates of prices prior to January 1983 are based on Form FEA-P302-M-1/EIA-460, "Petroleum Industry Monthly Report for Product Prices," and also exclude all federal, state, or local taxes paid at the time of sale. Sales for resale are those made to purchasers who are other-than-ultimate consumers. Sales to end users are sales made directly to the consumer of the product, including bulk consumers (such as agriculture, industry, and utilities) and residential and commercial consumers.

Note 6. Historical Petroleum Prices. Starting in January 1983, Form EIA-782, "Monthly Petroleum Product Sales Report," replaced 10 previous surveys. Every attempt was made to continue the most important price series. However, prices published through December 1982 and those published since January 1983 do not necessarily form continuous data series due to changes in survey forms, definitions, instructions, populations, samples, processing systems, and statistical procedures. To provide historical data, continuous series were generated for annual data 1978–1982 and for monthly data 1981 and 1982 by estimating the prices that would have been published had Form EIA-782 survey and system been in operation at that time. This form of estimation was performed after detailed adjustment was made for product and sales type matching and for discontinuity due to other factors. An important difference between the previous and present prices is the distinction between wholesale and resale and between retail and end user. The resale category continues to include sales among resellers. However, sales to bulk consumers, such as utility, industrial, and commercial accounts previously included in the wholesale category, are now counted as made to end users. The end-user category continues to include retail sales through company-owned and operated outlets but also includes sales to the bulk consumers such as agriculture, industry, and electric utilities. Additional information may be found in "Estimated Historic Time Series for the EIA-782," a feature article by Paula Weir, printed in the December 1983 [3] *Petroleum Marketing Monthly*, published by EIA.

Note 7. Electricity Prices to Ultimate Customers. Average annual prices of electricity to ultimate customers have the following plant coverage: Through 1979, annual data are for Classes A and B privately owned electric utilities only. For 1980–1982, annual data are for selected Class A utilities whose electric operating revenues were \$100 million or more during the previous year. For 1983, annual data are for a selected sample of electric utilities. Beginning in 1984, data are for a census of electric utilities. Beginning in 1996, annual data also include energy service providers selling to retail customers.

Average monthly prices of electricity to ultimate customers have the following plant coverage: Through 1985, monthly data are derived from selected privately owned electric utilities and, therefore, are not national averages. Beginning in 1986, monthly data are based on a sample of publicly and privately owned electric utilities. Beginning in 1996, monthly data also include energy service providers selling to retail customers.

Preliminary monthly data are from Form EIA-861M (formerly Form EIA-826), "Monthly Electric Power Industry Report," which is a monthly collection of data from approximately 450 of the largest publicly and privately owned electric utilities as well as a census of energy service providers with retail sales in deregulated states; a model is then applied to the collected data to estimate for the entire universe of U.S. electric utilities. Preliminary annual data are the sum of the monthly revenues divided by the sum of the monthly sales. When final annual data become available each year from Form EIA-861, "Annual Electric Power Industry Report," their ratios to the preliminary Form EIA-861M values are used to derive adjusted final monthly values.

Note 8. Natural Gas Prices. Natural gas prices are intended to include all taxes. Instructions on the data collection forms specifically direct that all federal, state, and local taxes, surcharges, and/or adjustments billed to consumers are to be included. However, sales and other taxes itemized on more than 3,000 consumers' bills are sometimes excluded by the reporting utilities. Delivered-to-consumers prices for 1987 forward represent natural gas delivered and sold to residential, commercial, industrial, vehicle fuel, and electric power consumers. They do not include the price of natural

gas delivered on behalf of third parties to residential, commercial, industrial, and vehicle fuel customers except for certain states in the residential and commercial sectors for 2002 forward. Volumes of natural gas delivered on behalf of third parties are included in the consumption data shown in Table 4.3. Additional information is available in EIA, *Natural Gas Monthly*, Appendix C.

Table 9.1 Sources

Domestic First Purchase Price

1949–1976: U.S. Department of the Interior (DOI), Bureau of Mines (BOM), *Minerals Yearbook*, "Crude Petroleum and Petroleum Products" chapter.

1977: Federal Energy Administration, based on Form FEA-P124, "Domestic Crude Oil Purchaser's Monthly Report."

1978–2009: U.S. Energy Information Administration (EIA), *Petroleum Marketing Annual 2009*, Table 1.

2010 forward: EIA, *Petroleum Marketing Monthly*, June 2024, Table 1, and EIA, Petroleum Data Tables.

F.O.B. and Landed Cost of Imports

October 1973–September 1977: Federal Energy Administration, Form FEA-F701-M-0, "Transfer Pricing Report."

October–December 1977: EIA, Form FEA-F701-M-0, "Transfer Pricing Report."

1978–2009: EIA, *Petroleum Marketing Annual 2009*, Table 1.

2010 forward: EIA, *Petroleum Marketing Monthly*, June 2024, Table 1, and EIA, Petroleum Data Tables.

Refiner Acquisition Cost

1968–1973: EIA estimates. The cost of domestic crude oil was derived by adding estimated transportation costs to the reported average domestic first purchase price. The cost of imported crude oil was derived by adding an estimated ocean transport cost based on the published "Average Freight Rate Assessment" to the average "Free Alongside Ship" value published by the U.S. Census Bureau.

1974–1976: DOI, BOM, *Minerals Yearbook*, "Crude Petroleum and Petroleum Products" chapter.

1977: January–September, FEA, based on Form FEA-P110-M-1, "Refiners' Monthly Cost Allocation Report."

1977: October–December, EIA, based on Form FEA-P110-M-1, "Refiners' Monthly Cost Allocation Report."

1978–2009: EIA, *Petroleum Marketing Annual 2009*, Table 1.

2010 forward: EIA, *Petroleum Marketing Monthly*, June 2024, Table 1, and EIA, Petroleum Data Tables.

Table 9.2 Sources

October 1973–September 1977: Federal Energy Administration, Form FEA-F701-M-0, "Transfer Pricing Report."

October 1977–December 1977: U.S. Energy Information Administration (EIA), Form FEA-F701-M-0, "Transfer Pricing Report."

1978–2009: EIA, *Petroleum Marketing Annual 2009*, Table 21.

2010 forward: EIA, *Petroleum Marketing Monthly*, June 2024, Table 21, and EIA, Petroleum Data Tables

Table 9.9 Sources

1973–September 1977: Federal Power Commission, Form FPC-423, "Monthly Report of Cost and Quality of Fuels for

Electric Utility Plants." October 1977–December 1977: Federal Energy Regulatory Commission, Form FERC-423, "Monthly Report of Cost and Quality of Fuels for Electric Utility Plants."

1978 and 1979: U.S. Energy Information Administration (EIA), Form FERC-423, "Monthly Report of Cost and Quality of Fuels for Electric Utility Plants."

1980–1989: EIA, *Electric Power Monthly*, August issues.

1990–2000: EIA, *Electric Power Monthly*, April 2003, Table 26.

2001–2007: EIA, *Electric Power Monthly*, October 2008, Table 4.1; Federal Energy Regulatory Commission, Form FERC-423, "Monthly Report of Cost and Quality of Fuels for Electric Utility Plants"; and EIA, Form EIA-423, "Monthly Cost and Quality of Fuels for Electric Plants Report."

2008 forward: EIA, *Electric Power Monthly*, May 2024, Table 4.1; and Form EIA-923, "Power Plant Operations Report."

Table 9.10 Sources

All Prices Except Vehicle Fuel and Electric Power

1949–2015: U.S. Energy Information Administration (EIA), *Natural Gas Annual* (NGA), annual reports and unpublished revisions.

2016 forward: EIA, *Natural Gas Monthly* (NGM), May 2024, Table 3.

Vehicle Fuel Price

1989–2013: EIA, NGA, annual reports.

Electric Power Sector Price

1967–1972: EIA, NGA, annual reports.

1973–1998: EIA, NGA 2000, Table 96.

1999–2002: EIA, NGM, November 2004, Table 4.

2003–2007: Federal Energy Regulatory Commission, Form FERC-423, "Monthly Report of Cost and Quality of Fuels for Electric Utility Plants," and EIA, Form EIA-423 "Monthly Cost and Quality of Fuels for Electric Plants Report."

2008 forward: Form EIA-923, "Power Plant Operations Report."

Percentage of Residential Sector

1989–2013: EIA, Form EIA-176, "Annual Report of Natural and Supplemental Gas Supply and Disposition." Calculated as the total amount of natural gas delivered to residential consumers minus the amount delivered for the account of others, and then divided by the total amount delivered to residential consumers.

2014 forward: EIA, Form EIA-857, "Monthly Report of Natural Gas Purchases and Deliveries to Consumers."

Percentage of Commercial Sector

1987–2015: EIA, NGA, annual reports. Calculated as the total amount of natural gas delivered to commercial consumers minus the amount delivered for the account of others, and then divided by the total amount delivered to commercial consumers.

2016 forward: EIA, NGM, May 2024, Table 3.

Percentage of Industrial Sector

1982–2015: EIA, NGA, annual reports. Calculated as the total amount of natural gas delivered to industrial consumers minus the amount delivered for the account of others, and then divided by the total amount delivered to industrial consumers.

2016 forward: EIA, NGM, May 2024, Table 3.

Percentage of Electric Power Sector

1973–2001: Calculated by EIA as the quantity of natural gas receipts by electric utilities reported on Form FERC-423, "Monthly Report of Cost and Quality of Fuels for Electric Utility Plants" (and predecessor forms) divided by the quantity of natural gas consumed by the electric power sector (for 1973 –1988, see *Monthly Energy Review (MER)*, Table 7.3b; for 1989–2001, see MER, Table 7.4b).

2002–2007: Calculated by EIA as the quantity of natural gas receipts by electric utilities and independent power producers reported on Form FERC-423, "Monthly Report of Cost and Quality of Fuels for Electric Utility Plants," and EIA-423, "Monthly Cost and Quality of Fuels for Electric Plants Report," divided by the quantity of natural gas consumed by the electric power sector (see MER, Table 7.4b).

2008 forward: Calculated by EIA as the quantity of natural gas receipts by electric utilities and independent power producers reported on Form EIA-923, "Power Plant Operations Report," divided by the quantity of natural gas consumed by the electric power sector (see MER, Table 7.4b).