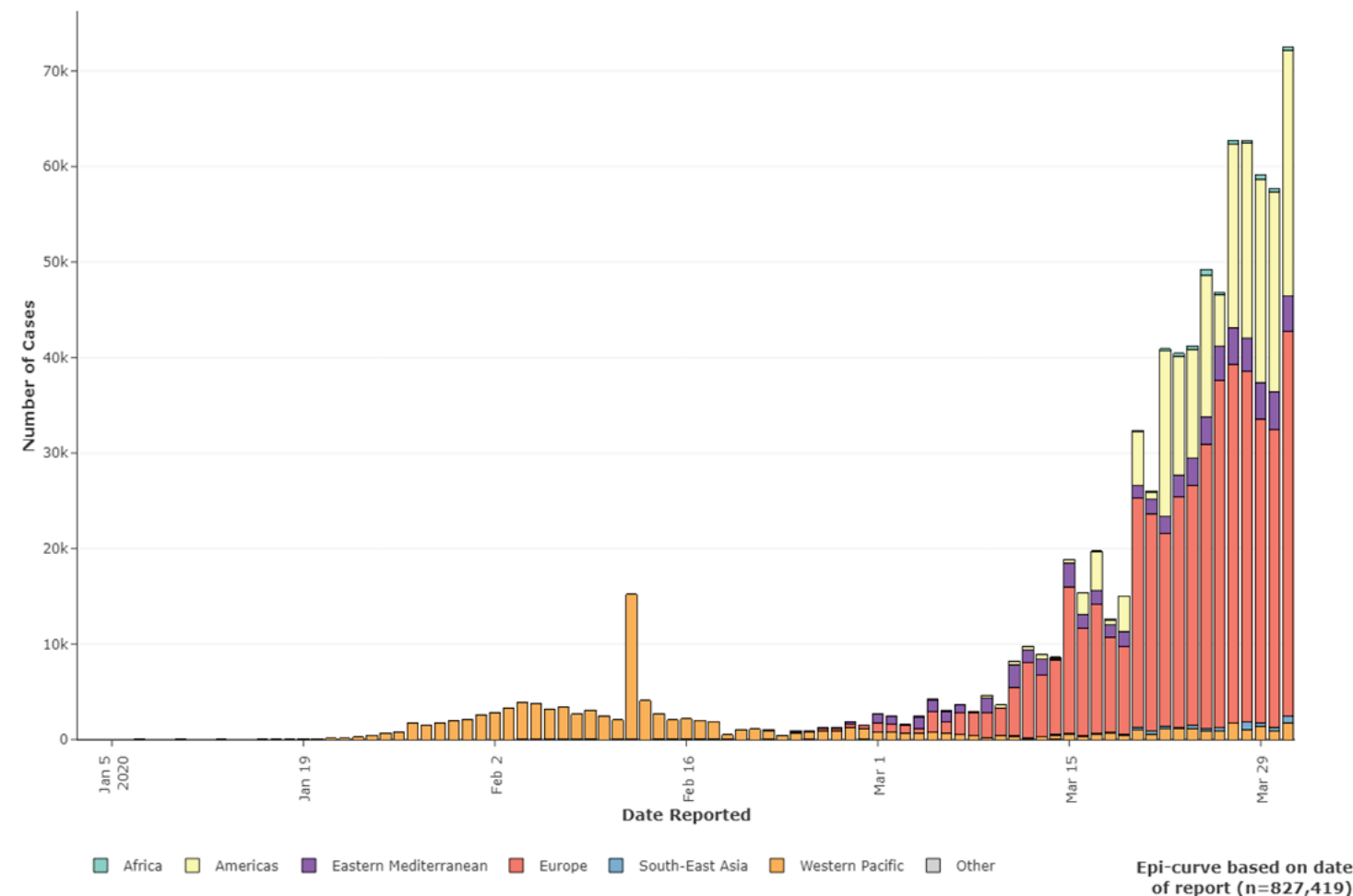


COVID-19

Situation update – 02 April 2020

Current Situation (As of 01 Apr, 18H Geneva Time)



Between 31 Dec 2019 - 01 Apr 2020

- **827,419 cases** from 205 countries/states/territories and 1 international conveyance
- **40,777 deaths** from 127 countries/states/territories and 1 international conveyance

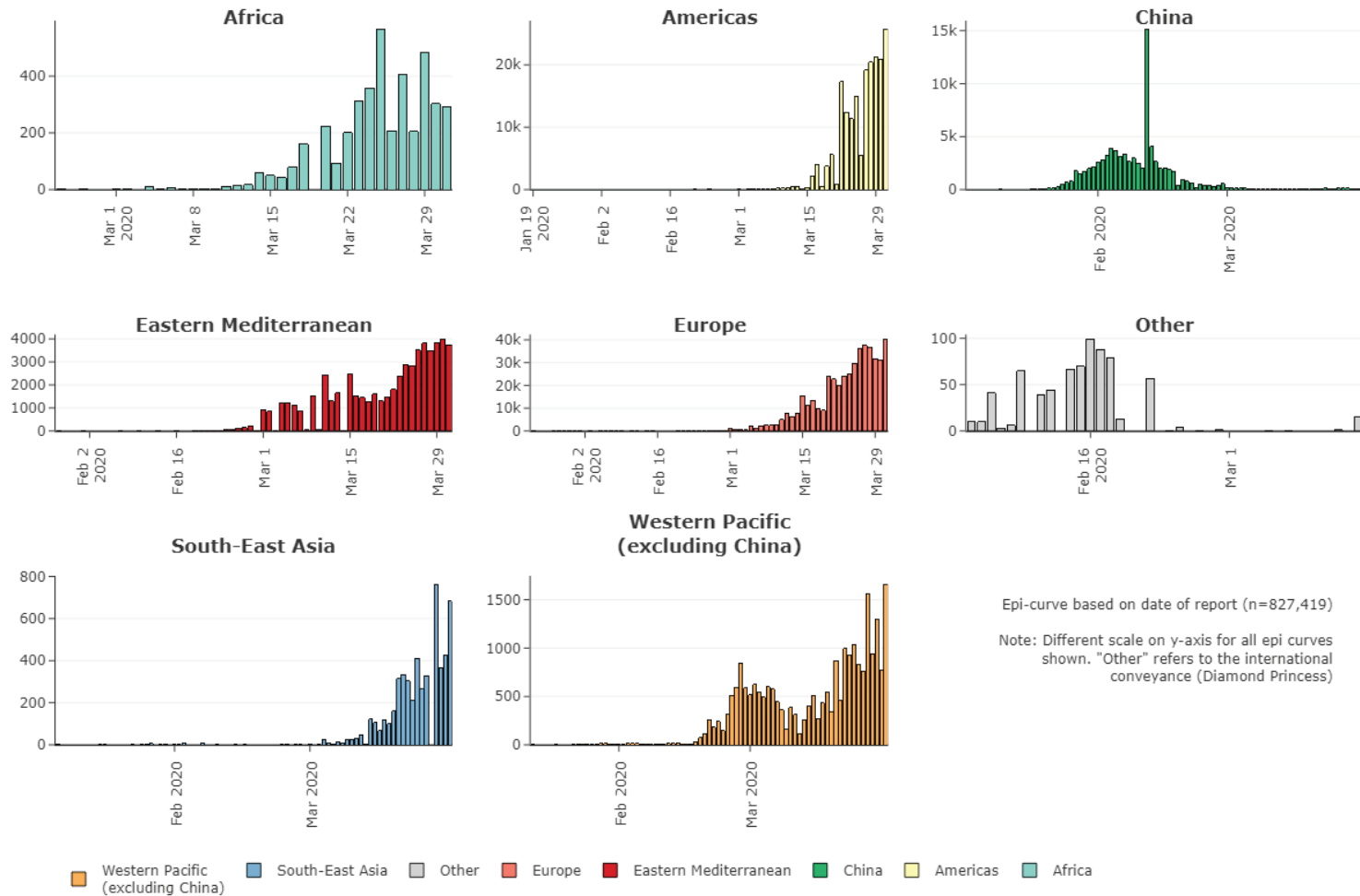
10 countries with highest number of cumulative cases:

- **United States of America (163199)**
- **Italy (105792)**
- **Spain (94417)**
- China (82638)
- **Germany (67366)**
- **France (51477)**
- **Iran (Islamic Republic of) (47593)**
- **The United Kingdom (25154)**
- Switzerland (16108)
- **Turkey (13531)**

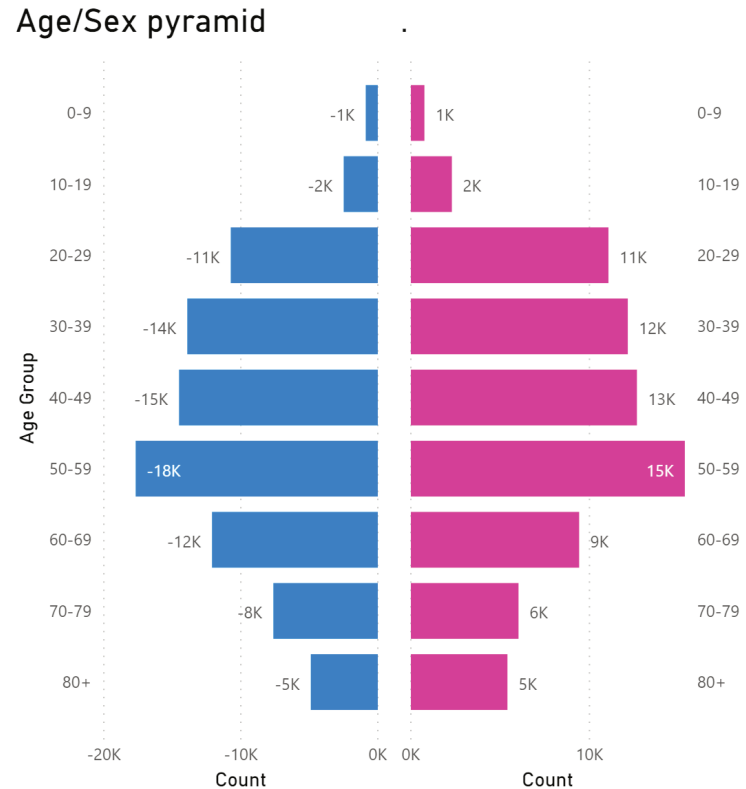
10 countries with most reported number of cases in past 24 hours:

- **United States of America (22559)**
- **Spain (9222)**
- **France (7500)**
- **Germany (5453)**
- **Italy (4053)**
- **The United Kingdom (3009)**
- **Iran (Islamic Republic of) (2987)**
- **Turkey (2704)**
- Canada (1378)
- Portugal (1035)

Number of confirmed cases notified under IHR or from official government sources by WHO region, for China, and International Conveyance (Diamond Princess) as of 01 Apr 18H



Total # of cases with sex and age information (n=159 504)

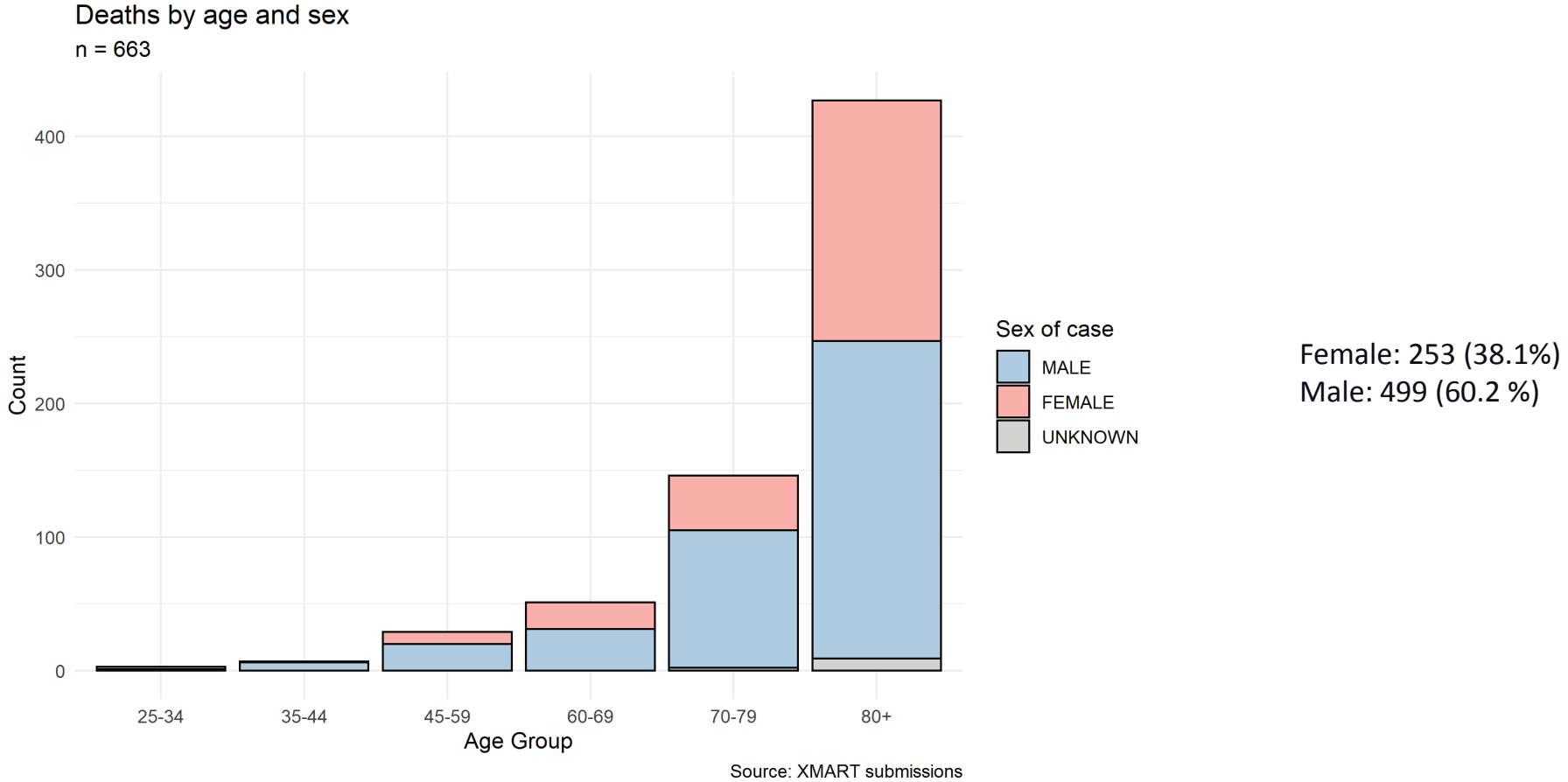


Data cleaning are ongoing and a work in progress, please interpret with caution

Sex	Percentage
Female	47%
Male	52%
Unknown	1%

Age	Percentage
0-9	1.0%
10-19	2.9%
20-29	13.4%
30-39	16.2%
40-49	17.0%
50-59	20.7%
60-69	13.5%
70-79	8.6%
80 +	6.6%

Total # of recorded deaths by sex and age group



Note: Most death reports are from EURO Member States

COVID-19 Updates/New technical guidance

- **New Guidance**

- **Surveillance:** Operational considerations for surveillance of COVID-19 using GISRS
- **Clinical care:** Severe Acute Respiratory Infections Treatment Centre: Practical manual
- **Logistics:** Essential Supplies Forecasting Tool
- **Lab:** Guidance for laboratories shipping specimens to WHO reference laboratories that provide confirmatory testing for COVID-19 virus

All technical guidance by topic

Critical preparedness, readiness and response actions for COVID-19	Country-level coordination, planning, and monitoring	Surveillance, rapid response teams, and case investigation
National laboratories	Clinical care	Infection protection and control / WASH
Risk communication and community engagement	Operational support and logistics	Guidance for schools, workplaces & institutions
Early investigation protocols	Virus origin/Reducing animal-human transmission	Points of entry / mass gatherings
Naming the coronavirus	Humanitarian	Health workers

<https://www.who.int/emergencies/diseases/novel-coronavirus-2019/technical-guidance>

COVID-19 New technical guidance (continued) and Scientific Briefs

Additional new guidance

- Maintaining essential health services
- COVID-19: Operational guidance for maintaining essential health services during an outbreak
- Guiding principles for immunization activities during the COVID-19 pandemic
- Operational considerations for COVID-19 management in the accommodation sector (Hotels)
- Scientific Briefs (New technical product)
 - Scientific summaries of available evidence on specific topics:
 - Modes of transmission of virus causing COVID-19: implications for IPC precaution recommendations
 - Off-label use of medicines for COVID-19
 - Origin of SARS-CoV-2

Thank you