



Republic of Botswana
Ministry of Health and Wellness



Botswana COVID-19 Status Update

Hon. Dr Lemogang Kwape
Minister of Health and Wellness

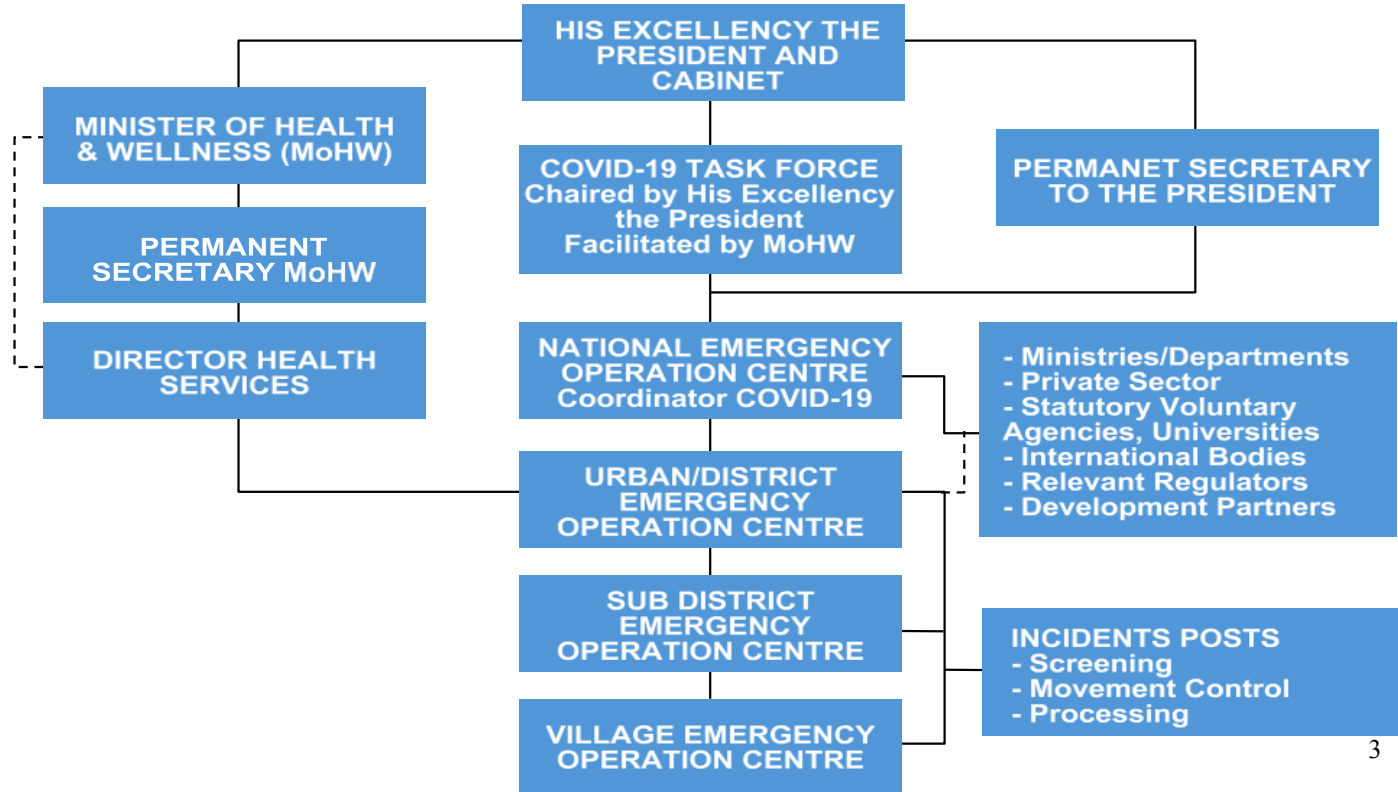
11 June 2020



Chronology of Events on Botswana's Response to Covid-19

- January:** Screening started at major Ports of Entry
National Public Health Emergency Preparedness and Response activated
- February:** Botswana COVID-19 Preparedness and Response Plan formulated
- March:** First case of Covid-19 reported in Botswana
Botswana declares Public Health Emergency.
Botswana imposed mandatory 14 days facility-quarantine
Presidential Task Force on Covid-19 appointed
- April:** State of Public Health Emergency declared
Extreme Social distancing introduced
End of Extreme Social Distancing
- May:** Introduction of Zones for Control of Covid- 19
Mandatory use of masks

Structure for Presidential Task Force on Covid-19



Botswana COVID-19 Preparedness and Response Plan



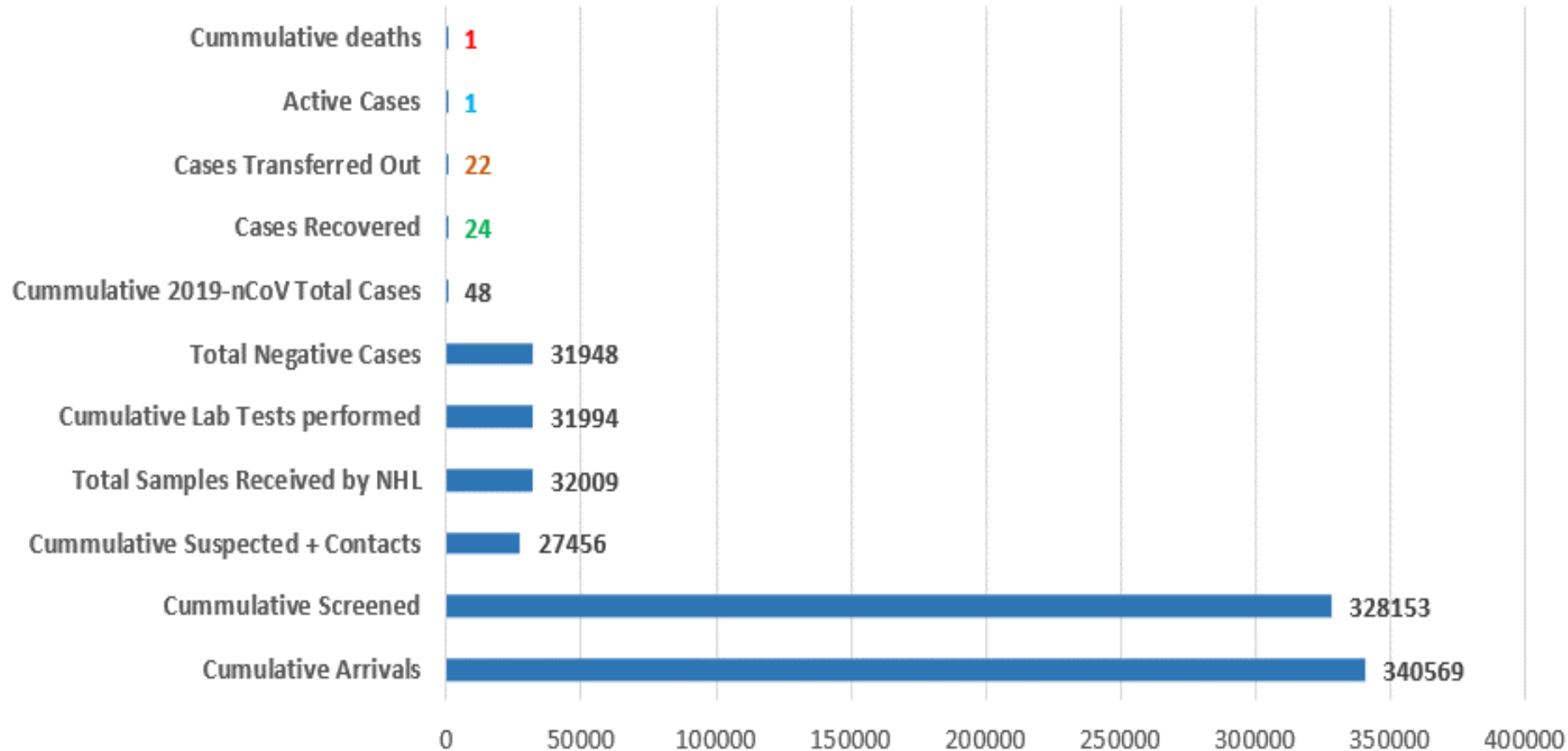
Thematic Areas	Objectives
Coordination	<ul style="list-style-type: none">• Build capacity of PHEOC• Identify districts to prioritise for COV-19 preparedness• Strengthen coordination and management of all Public health emergency activities during the COV-19 outbreak
Surveillance, rapid response teams, and case investigation	<ul style="list-style-type: none">• Early detection of people exposed to corona virus
Laboratory support	<ul style="list-style-type: none">• Ensure preparedness of the laboratory for COVID19
Case Management	<ul style="list-style-type: none">• To capacitate all health care-worker cadres and stakeholders on management and prevention of coronavirus• Isolation and management of suspected and confirmed coronavirus cases

Botswana COVID-19 Preparedness and Response Plan



Thematic Areas	Objectives
Infection Prevention and Control	<ul style="list-style-type: none">• Use of harmonized assessment tools to measure and improve the performance of health facilities.• Strengthen IPC in the community and in health facilities.
Port health	<ul style="list-style-type: none">• Focus on supporting surveillance and risk communication activities.• Screening of travellers at PoEs enable early identification of suspect cases and raising of alerts.• Disseminating COVID-19 prevention and control messages to travellers at PoEs.
Risk Communication and Community Engagement.	<ul style="list-style-type: none">• To sensitize and educate the public about the Novel Coronavirus• To detect and respond to concerns, rumours and misinformation
Logistics	<ul style="list-style-type: none">• To procure all the commodities needed for coronavirus prevention and control• To avail transportation of patients and staff during the outbreak

COVID-19 Update(28/01/20 -09/06/2020)



ACHIEVEMENTS



- Political-will (led by H.E. the President)
- Early detection of cases through **testing** and **contact tracing**
 - Increased testing capacity: **Government (6)**: National Health Laboratory, Francistown, Kasane, Palapye*, Botswana Vaccine Institute, Botswana Veterinary Laboratory
 - **Partners (2)**: Botswana-Harvard Reference Laboratory, University of Botswana
 - Testing Currently estimated at **4,000/day**
- Reduced spread of the Corona virus (48 cases)
 - Low local transmission
- Public adherence to lockdown regulations.
- Improved coordination of interventions with stakeholders
- Support from international organisations, NGOs and the private sector.

Emerging Challenges



- Number of cases detected at the border among **Truck drivers** stands at a total of 25 cases, signifying an ongoing risk of **importation** of COVID-19.
- Limited access to supplies, including PPE, reagents etc
- Shortage of blood in the blood banks
- Addiction, withdrawal and cravings due to tobacco and alcohol restrictions
- Gender Based Violence
- Incidents of crowding
- Disruptions in provision of essential health services

Way Forward



- Strengthen the health care system – e.g. preparation of Isolation sites, equipping facilities and Human Resource
- Testing expansion at regional level and points of entry
 - Testing projected to increase to 10,000 test/day
- Private Laboratory Testing to initiate
- Surveillance and active case finding
- Maintenance of health protocols such as hand washing, wearing masks and social distancing
- Focus on Research and Development and explore the potential for traditional medicine
- Explore local manufacturing for PPE and other essential commodities



Thank you