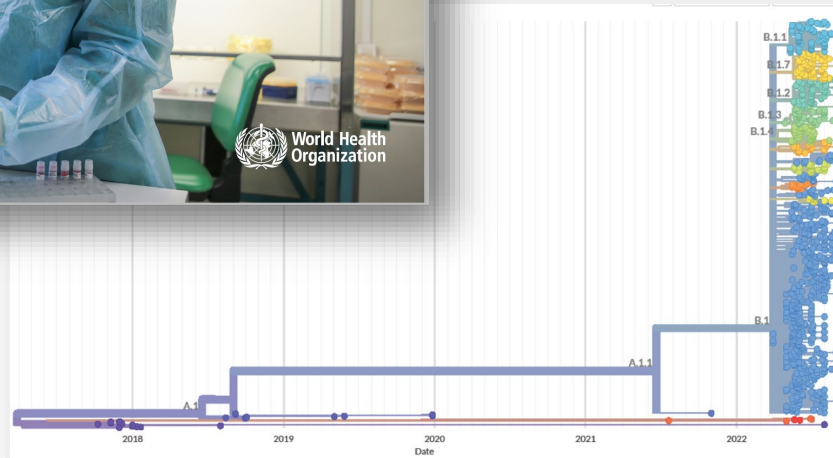


WHO Member State Information Session: Monkeypox

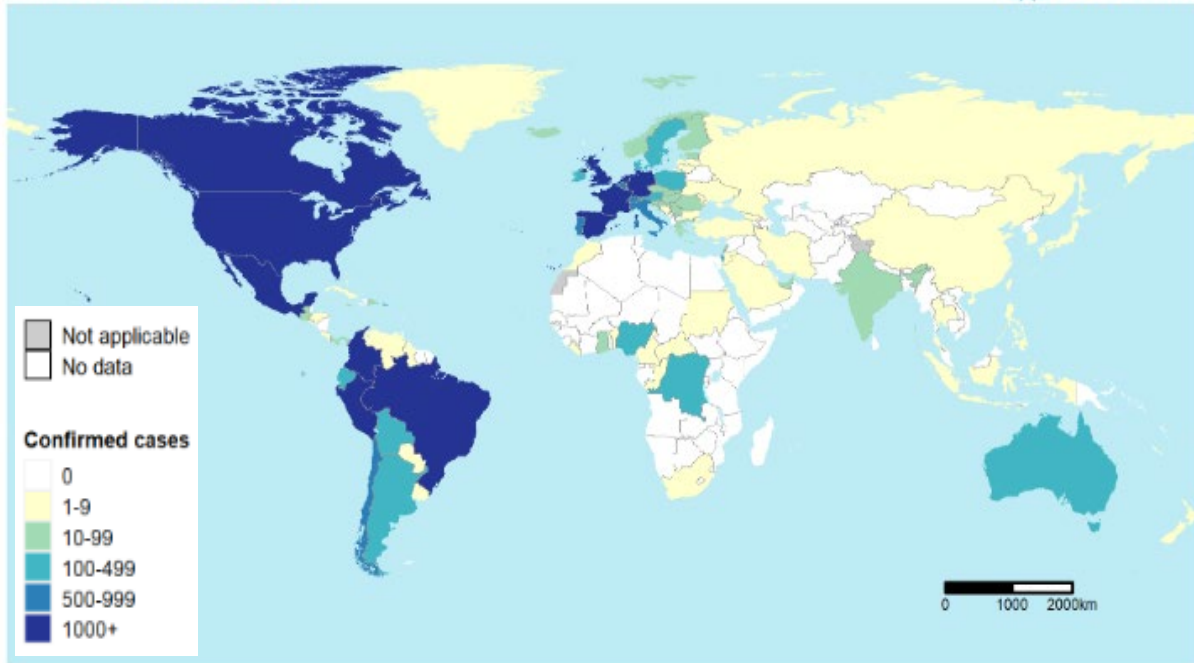
29 September 2022



**Stop the
monkeypox
outbreak.**

Monkeypox - Epidemiological Situation

Confirmed cases of Monkeypox
from 1 Jan 2022, as of 27 Sep 22



Cases by WHO Region

AMRO: 41,027

WPRO: 180

EURO: 24,495

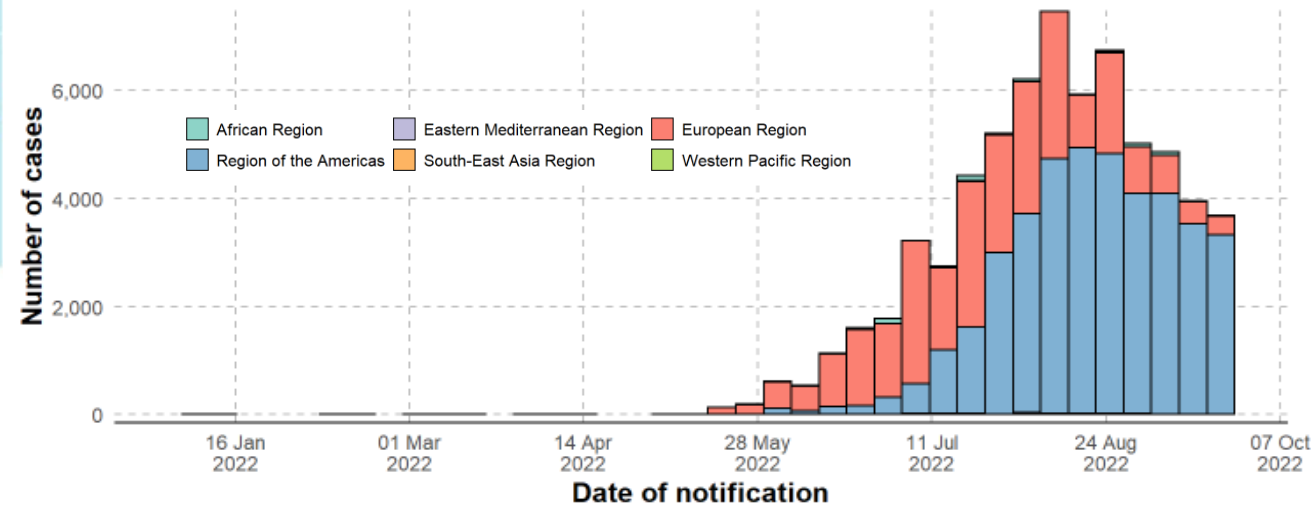
EMRO: 53

AFRO: 567

SEARO: 21

- **66,343** confirmed cases
- **26** deaths
- **105** Member States/all WHO regions

data as of 25 Sep 2022 17:00 CEST

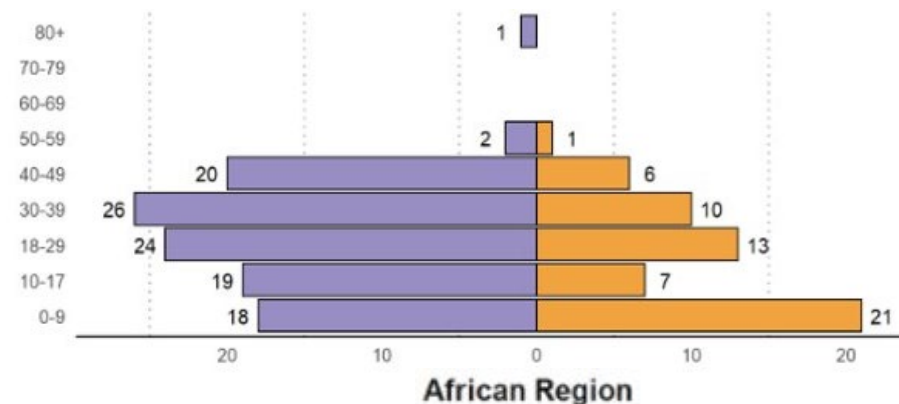
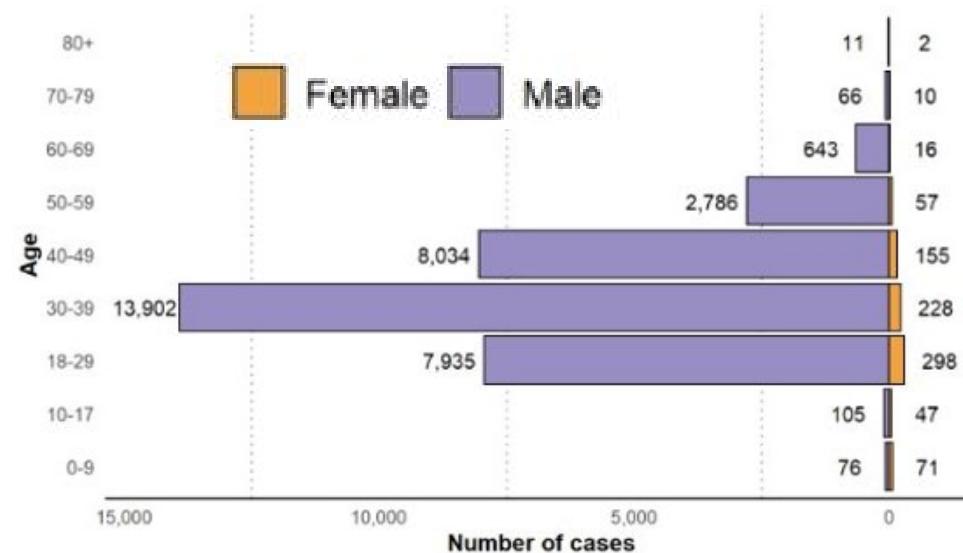


Monkeypox - Epidemiological Situation

97% men, median age 35 years
 Most commonly reported exposure: sexual activity

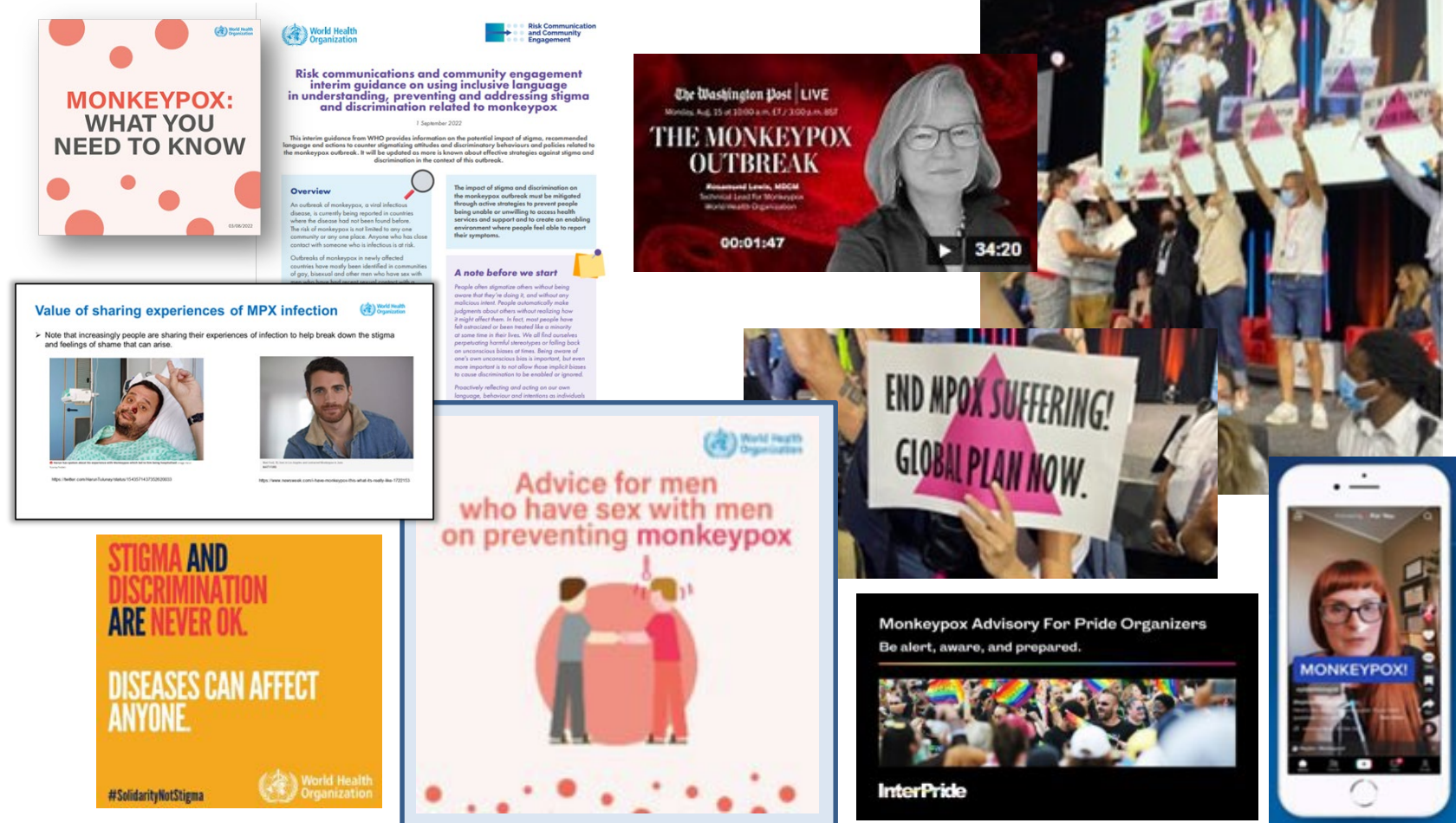
Case Profiles for case reports with details %	
MSM	89
HIV +	47
Health worker	4
Sexual Transmission	87
Hospitalised	0.2

[WHO Global Dashboard](#)



Monkeypox - Outbreak Response

- Emergency management
- **Community engagement**
- Technical guidance
 - Surveillance
 - Testing and laboratory
 - Clinical management & IPC
 - Vaccines & immunization
 - RCCE
- Public health advice
 - MSM / events & gatherings
 - Protecting yourself / care at home
 - Sex workers
 - Prevention of stigma
- Research and development
 - Global consultation
 - Protocols and studies
 - One Health / Tripartite



Monkeypox – Access to Countermeasures



HQ procuring kits to support countries

- **38k** tests purchased for 58 Member States
- **31k** tests purchased by PAHO for 32 MS
- **6k** tests purchased by EURO
- **23k** tests **received** by countries

- Tecovirimat RCT protocols
- **2500 treatment courses donation from manufacturer for expanded use (MEURI)**
- Small number of tecovirimat available for compassionate use
- Vaccine: MVA-BN, LC16 regulatory review
- Studies being planned



Monkeypox - Country Support



Ghana

- AFRO- MoH- WCO
- Technical Support Mission
- 3-7 October

Saudi Arabia

- EMRO/GULF CDC
- Risk Assessment Workshop
- Riyadh (9-10 October)



Nigeria

- AFRO- MoH- WCO
- Technical Support Mission
- 10-14 October

Responding to monkeypox : Our way of working



- **Information** - tailored risk communication at the heart of the response
 - Co-create messages through community engagement and partnerships
 - Address stigma in population groups most affected by the outbreak



- **Action** - rapid and effective action is needed in all spheres of the response



- **Evidence** - effective response is informed by monitoring and research
 - Forward-looking clinical and public health research
 - Support response strategies and efforts



- **Equity** - access to information, services and resources within and across national borders

Monkeypox SPRP – Strategic Objectives



- 1 Interrupt human-to-human transmission of monkeypox, with a focus on population groups at high risk of exposure*
- 2 Protect vulnerable groups at risk of severe monkeypox disease**
- 3 Minimize zoonotic transmission of monkeypox virus

An Integrated Approach



Five core components (**5Cs**) of preparedness, readiness and response are central to achieving the strategic objectives:

C1 | Emergency coordination

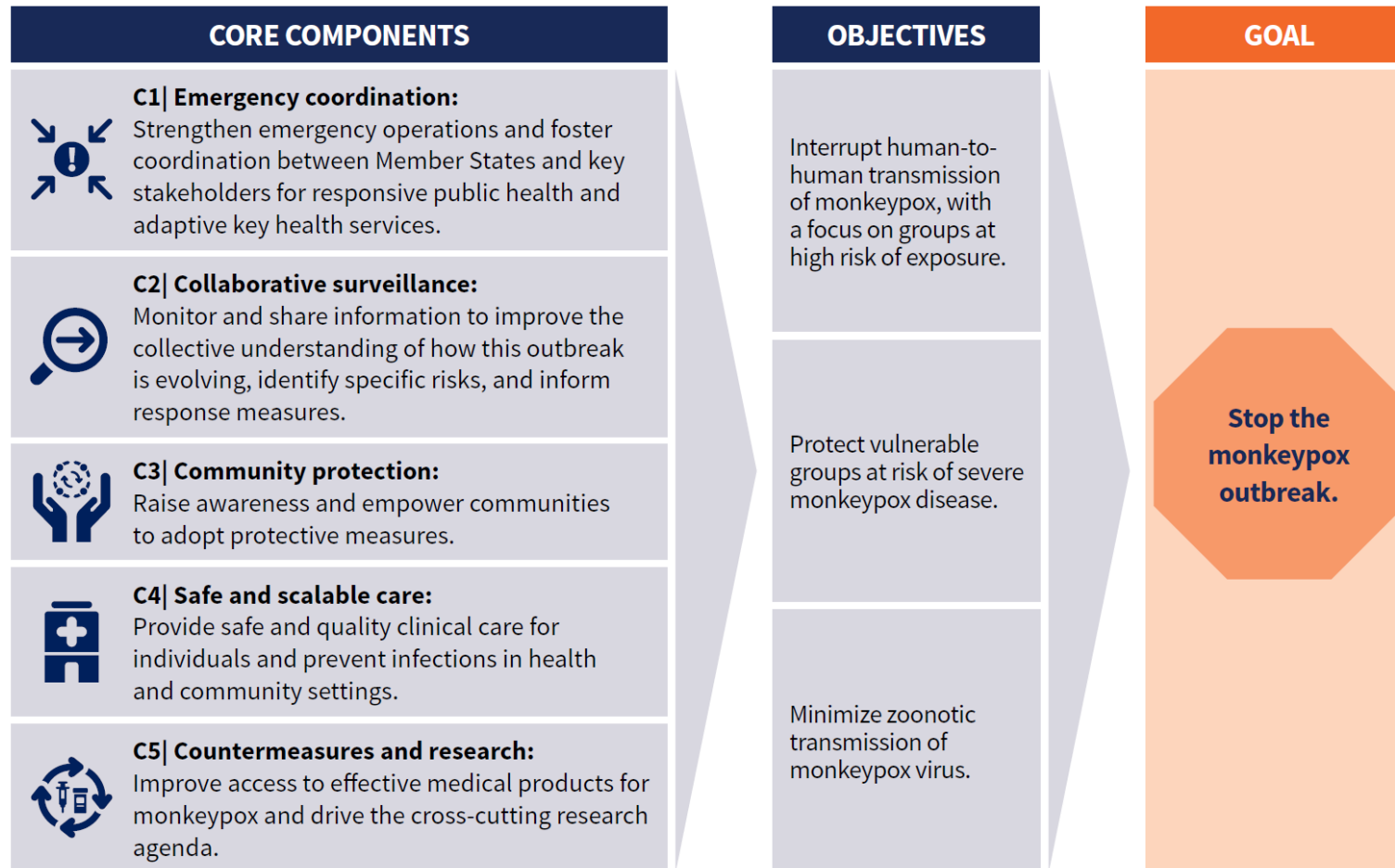
C2 | Collaborative surveillance

C3 | Community protection

C4 | Safe and scalable care

C5 | Countermeasures and research

Implementation and Mutual Support



Financial Requirements

Unit: million

PILLAR	AFRO	AMRO	EMRO	EURO	SEARO	WPRO	HQ	Grand Total
P1. Leadership, coordination, planning, financing, and monitoring	0.65	0.16	0.11	0.18	0.34	0.27	0.35	2.05
P2. Risk communication and community engagement	0.90	0.72	0.17	0.36	1.03	0.45	0.58	4.22
P3. Surveillance, epi investigation, and contact tracing	2.62	0.40	0.27	0.24	0.77	0.25	1.31	5.86
P4. Travel, trade and points of entry	0.20	0.06	0.03					0.29
P5. Diagnostics and testing	0.85	0.47	0.10	1.48	0.97	0.51	0.15	4.53
P6. Infection prevention and control	1.50	0.19	0.05	0.05	0.31	0.32	0.15	2.58
P7. Case management and therapeutics	0.70	0.17	0.04	0.10	0.18	0.14	0.09	1.42
P8. Operational support and logistics	0.10	0.07	0.02	0.10	0.31	0.12		0.72
P9. Essential health systems and services		0.02						0.02
P10. Vaccination	2.28	0.18	3.25	0.20	0.66	0.23	4.58	11.38
P11. Research and innovation		0.32	0.21		0.12	0.04	0.07	0.75
Grand Total	9.80	2.76	4.25	2.72	4.68	2.33	7.28	33.82