

---

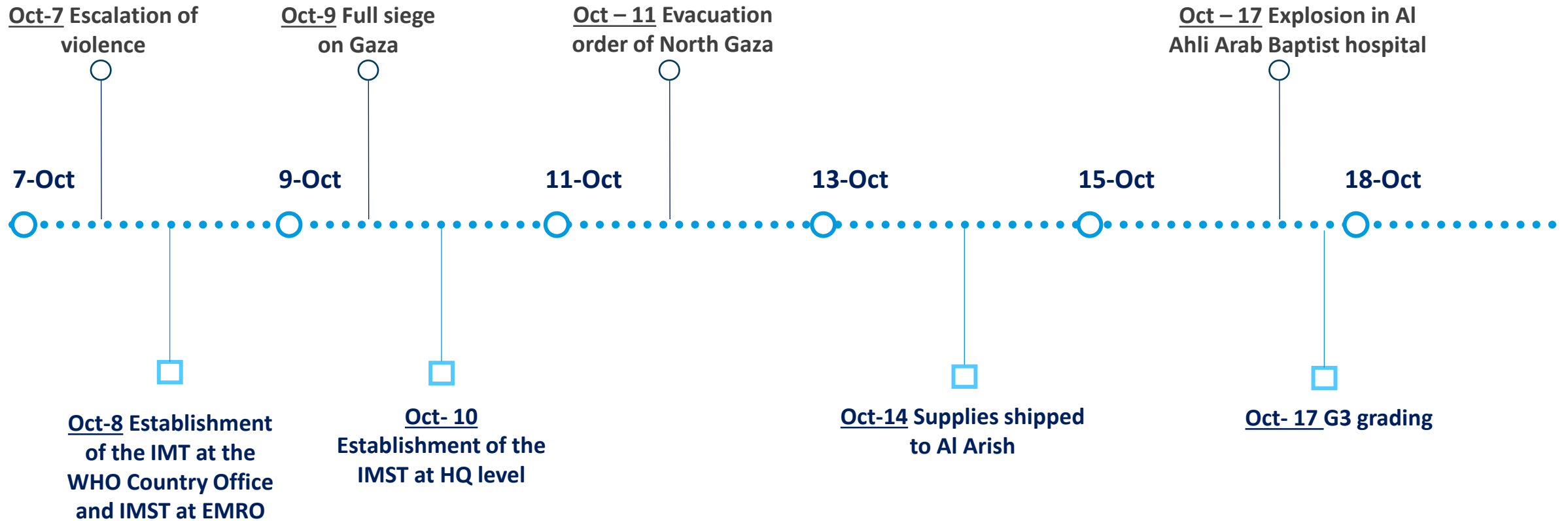
# Escalation of Violence in Israel and the occupied Palestinian territory

19 October 2023

---

# Situation Overview

# Timeline of events



---

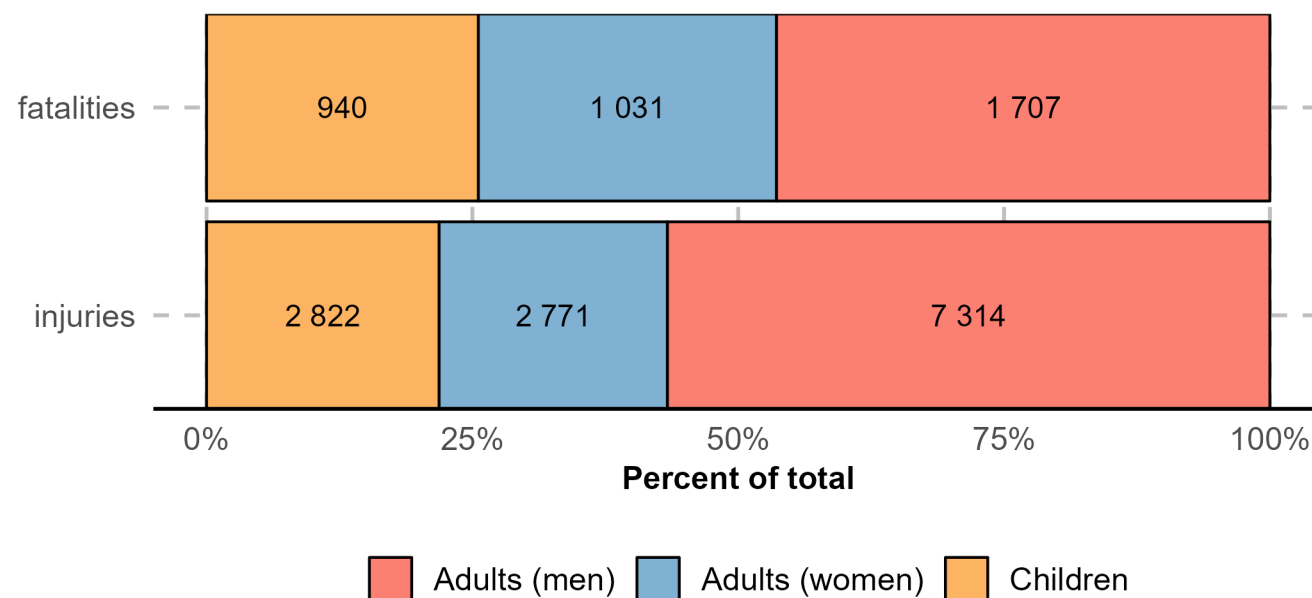
# Health Impact of the escalation of violence

# Impact of the Conflict - Casualties (As of 18 October 2023)

Overall figures by region

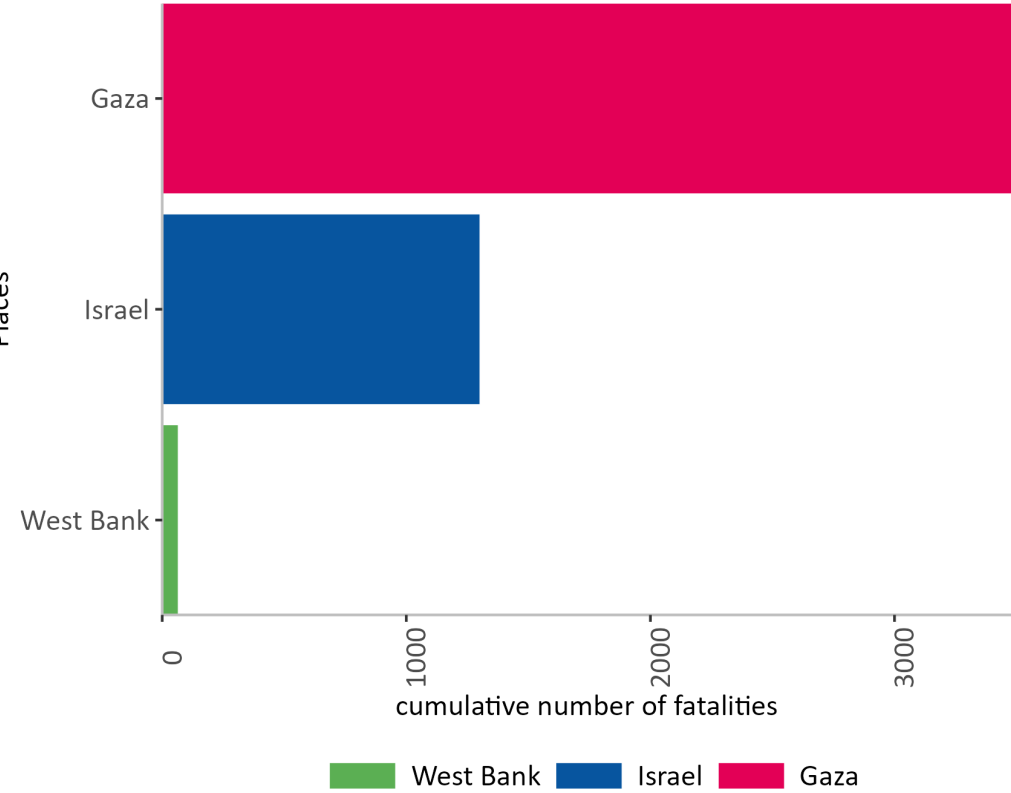
Region	Fatalities	Injuries
Israel	1,400+	4,629
Lebanon	25-27	
occupied Palestinian territory	3,540	13,800
Gaza Strip	3,478	12,500
Women	1,031 (38%)	2,771 (27%)
Men	1,707 (62%)	7,314 (73%)
Children	940 (34%)	2,822 (28%)
West Bank and East Jerusalem	62	1,300

Gaza Strip – Fatalities and Injuries (7-16 October 2023)

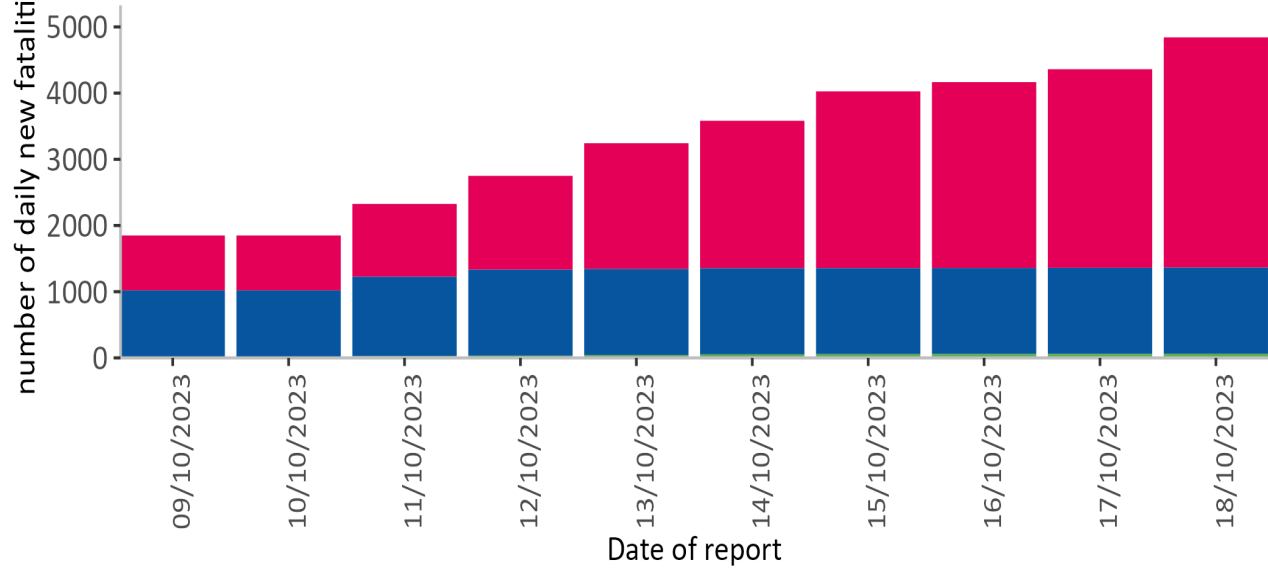


# Impact of the Conflict – Fatality– Trend Analysis (As of 18 October 2023)

Cumulative number of fatalities as of 18 October 2023

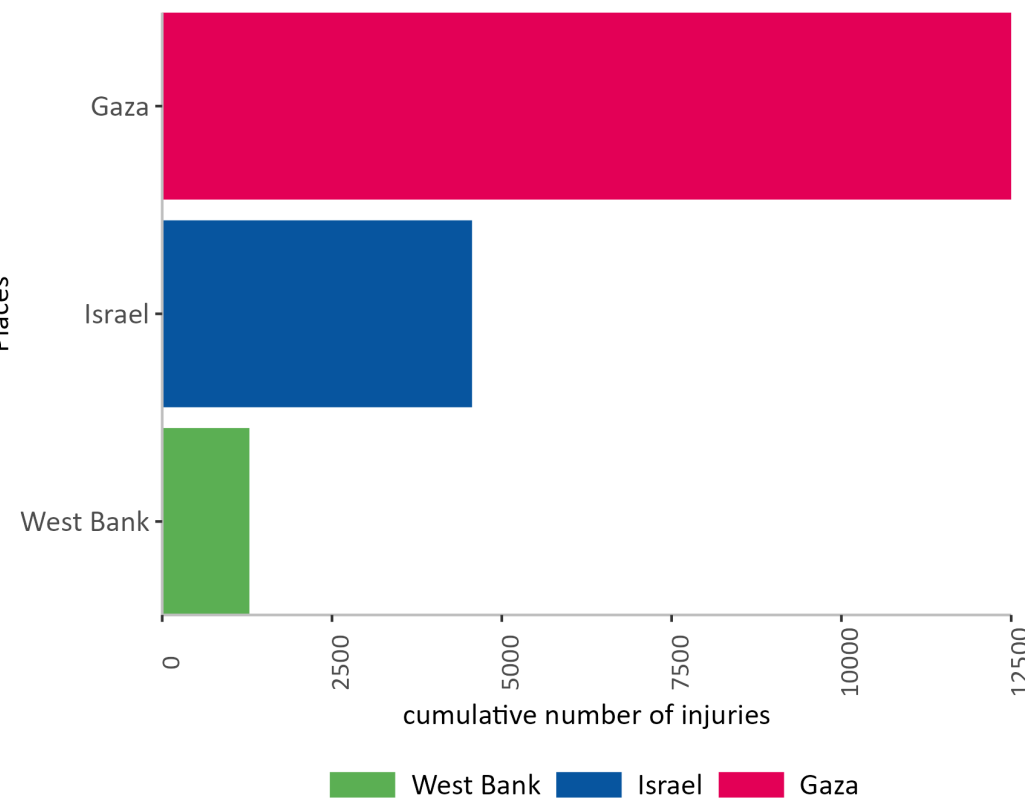


Daily new fatalities by date of report

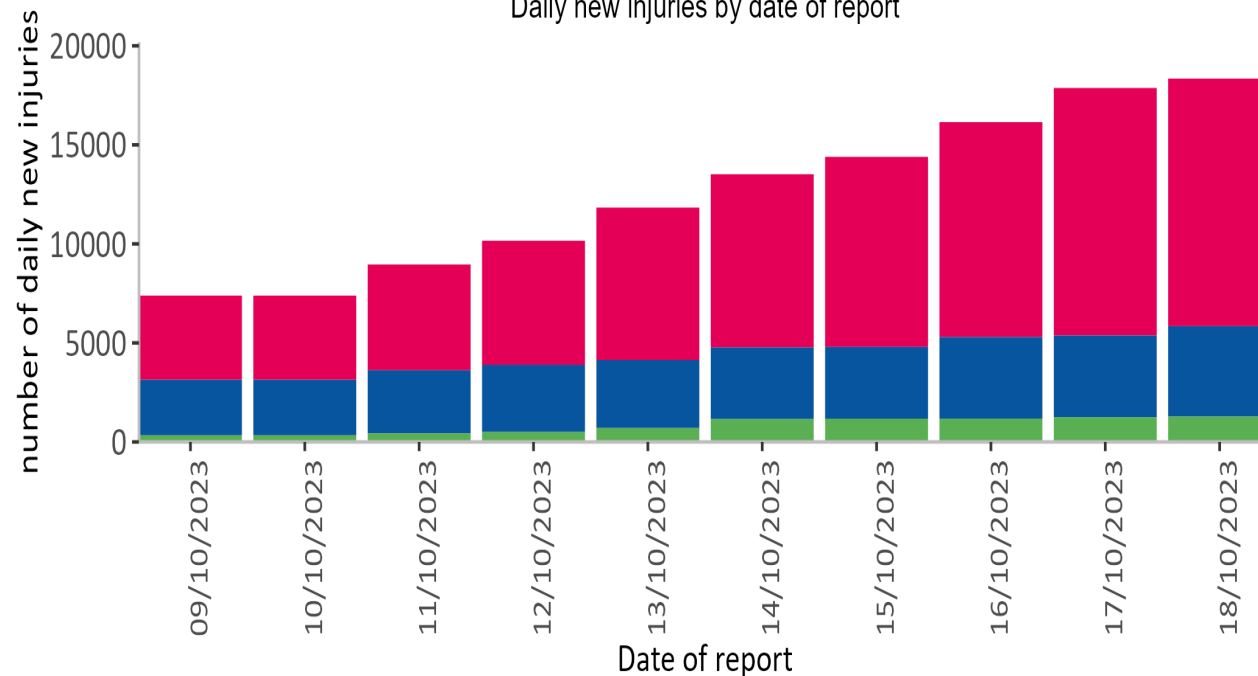


# Impact of the Conflict – Injuries – Trend Analysis (As of 18 October 2023)

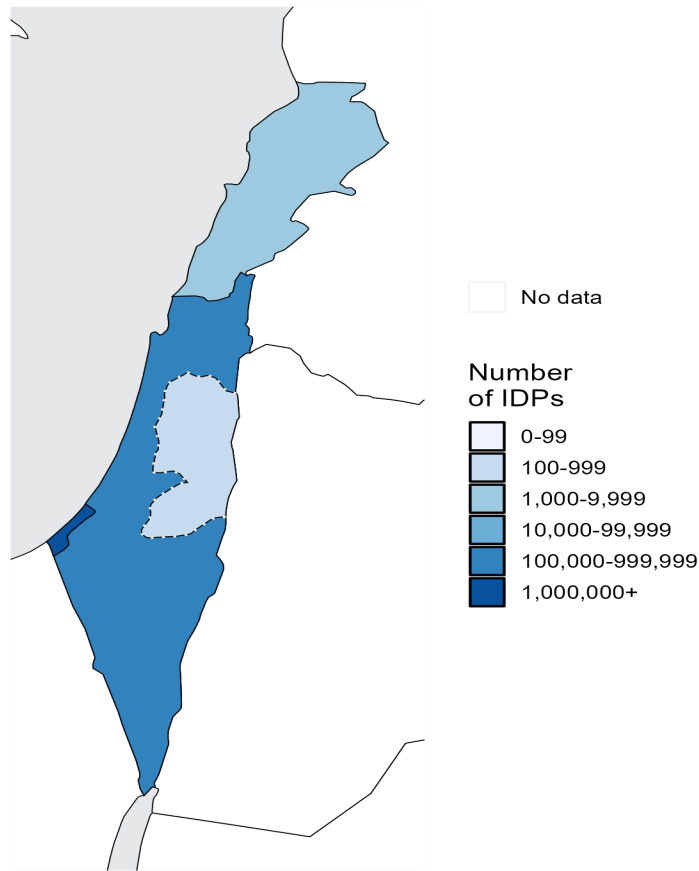
Cumulative number of injuries as of 18 October 2023



Daily new injuries by date of report



# Impact of the Conflict - Displacement (As of 19 October 2023)



Location	Total IDPs <sup>1</sup>	Date of last update	Source
Gaza Strip	1 000 000	18 Oct 2023	OCHA
Israel	189 000	17 Oct 2023	OCHA
Lebanon	9 801	18 Oct 2023	DTM
West Bank	537	12 Oct 2023	IDMC

<sup>1</sup>Numbers of IDPs are approximate and subject to rapid change

- Numbers are changing rapidly
- The population of Gaza reported to move from North of Gaza to the South, not possible for hospitalized patients.
- Reports of Gaza population moving back to the North following explosions at the Rafah border crossing
- Out of the 1M IDPs in Gaza, more than 500 000 are in UNRWA shelters, 50 of them being set-up to receive IDPs.



---

# Key Health Risks and Vulnerabilities

# Public Health Situation Analysis - Israel

## Population and mortality profile

- 9 174 520 total population (UNICEF, 2023)
- The life expectancy at birth is 82.6 years
- Main causes of mortality are ischaemic heart disease, degenerative diseases, stroke, cancers, diabetes mellitus and kidney diseases.

## Crisis-related determinants of health

- Violence
- Disruption to essential health services
- Displacement and overcrowding

Main identified health risks from the Israel PHSA (Oct 2023)

Public health risk	Level of risk***
Trauma	High
Mental Health and Psychosocial Support (MHPSS)	High
Noncommunicable diseases (NCDs)	Medium

# Public Health Situation Analysis - oPt

- About **1.2 million** people out of **2.1 million** population of Gaza live north of Wadi Gaza asked by Israel to evacuate to the South of Wadi Gaza.
- Of these **1.2 million**:
  - **158 049** children <5 years, **97 614** neonates (<1 year), and **33 317** elderly > 65 years of age.
  - **24 480** pregnant women, **84 000** people with disabilities and **120 000** with chronic conditions, more than 52 000 with diabetes.
- **Determinants of health:**
  - **Displacement, overcrowding** and **damage to critical infrastructure** constitute an imminent risk of communicable disease outbreak, compounded by reduced surveillance capacities
  - Complete siege resulting in cutting of food, water and power supplies.
  - Disrupted **access to essential health services** and medical supplies
- **Main immediate health needs:**
  - **Trauma care**
  - **MHPSS** (51% of the population suffering from mental health conditions prior to the escalation of conflict)
  - **NCD care** (particularly diabetes, dialysis)
  - **Epidemic preparedness** (acute respiratory infections, diarrheal diseases)
  - Maternal and neonatal health (estimated 455 deliveries/day for the whole of the Gaza Strip)

Key Health Risks in the coming month, according to the recent PHSA for oPt (Octo 2023)

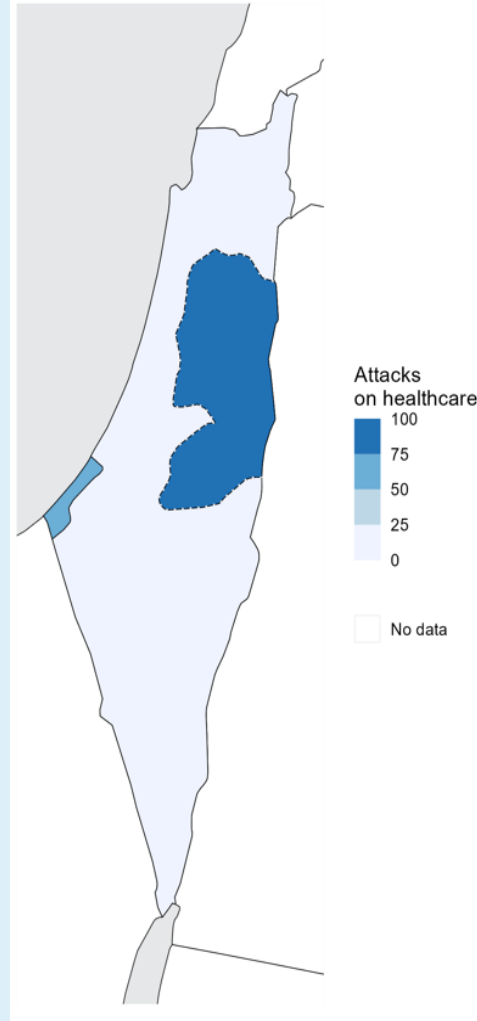
Public health risk	Level of risk
Trauma and injury	High
Non-communicable diseases (NCD)	High
Mental Health	High
Respiratory Tract Infections (RTI), including COVID-19	High
Maternal and neo-natal health	High
Cholera and Acute Watery Diarrhoea (AWD)	High
Malnutrition	Medium

---

# Health System Capacities and Needs

# Attacks on Healthcare (As of 18 October 2023)

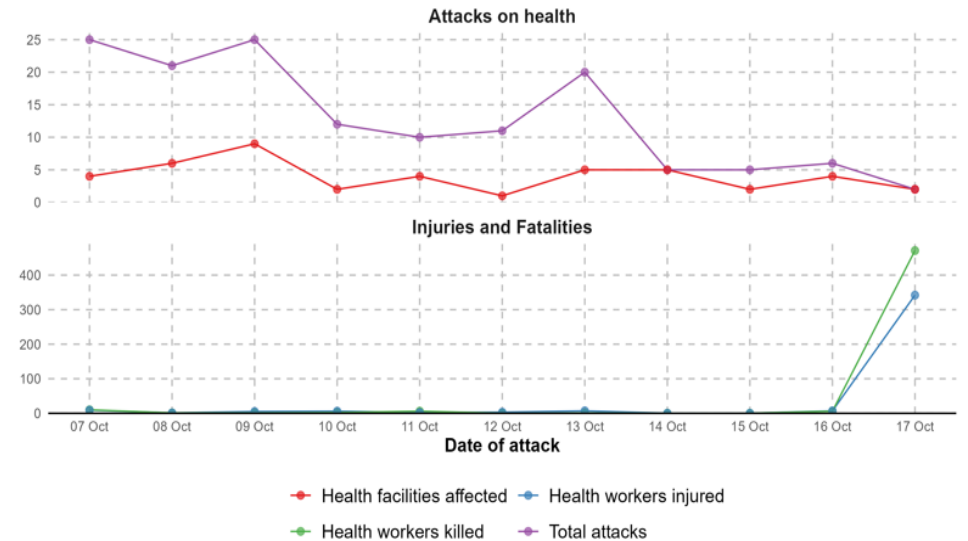
- **Total number of attacks: 142**
- Israel: **6 attacks** on healthcare recorded through the SSA
- oPt: **136 attacks** recorded by the WHO SSA platform between 7 to 15 October.
  - Gaza Strip: **59 attacks** have been recorded till 17 October impacting:
    - Health workers: **16 killed** and **28 wounded**
    - Health facilities: 26 affected
    - Ambulances: 23 damaged
  - West Bank: **77 attacks** have been recorded till 15 October impacting:
    - Ambulances: 61 affected
    - 42 obstructed access



## Attacks on health, Israel and occupied Palestinian territory As of 17 October 2023



Location	Total Attacks	Health workers killed	Health workers injured	Health facilities affected
Gaza	59	16	28	26
West Bank	77	2	12	0
Israel	6	5	0	3
<b>Total</b>	<b>142</b>	<b>23</b>	<b>40</b>	<b>27</b>

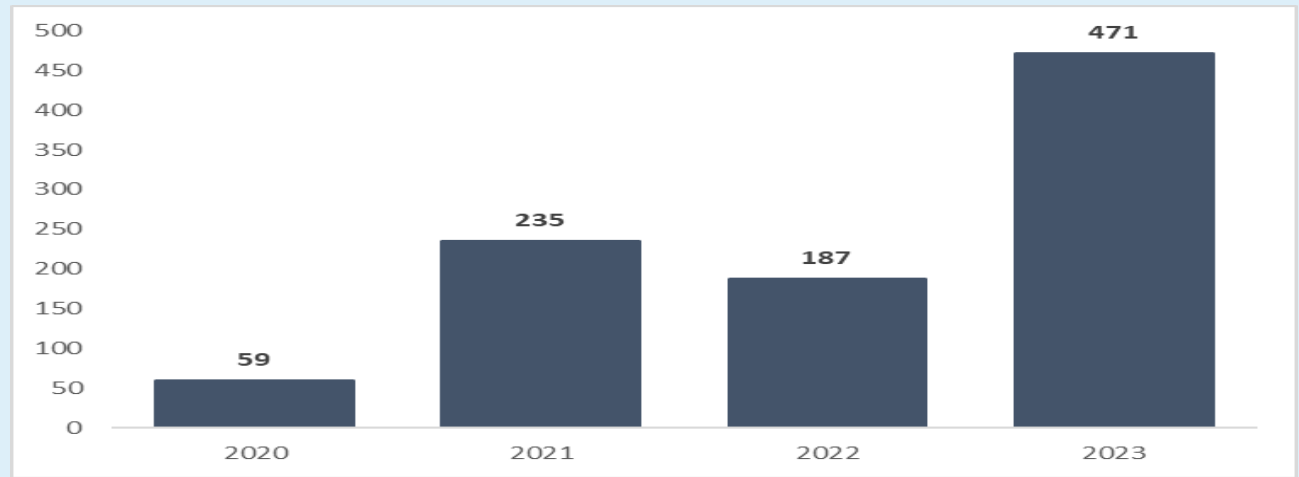


## Attacks on Healthcare – oPt - Trend Analysis

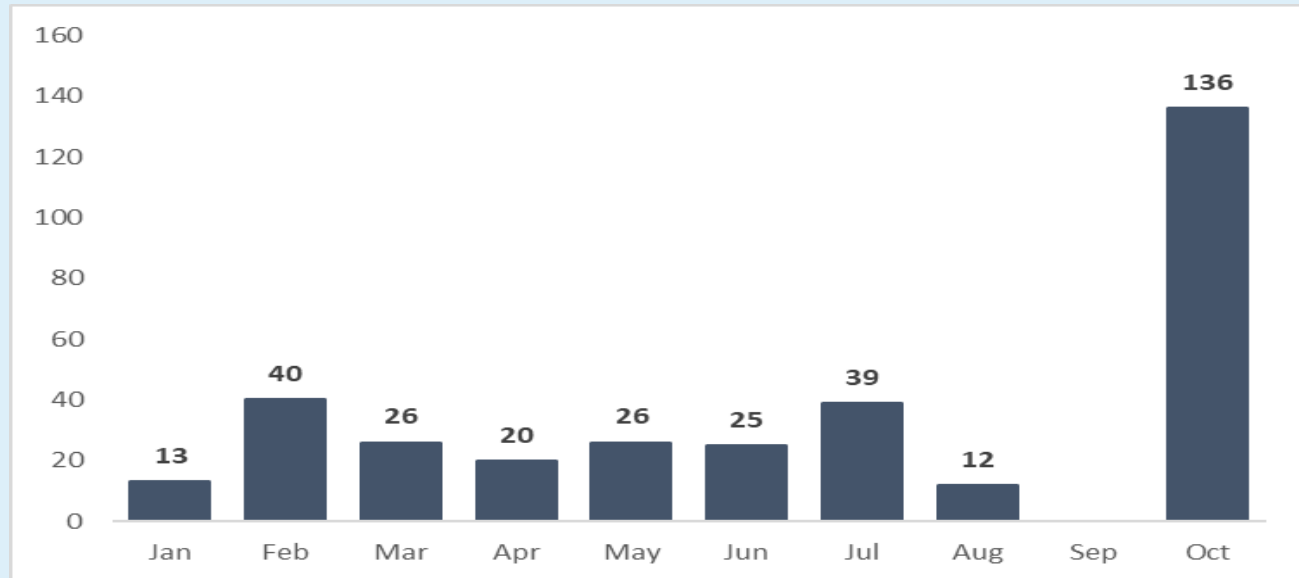
The year **2023** has witnessed the **highest number of attacks** against healthcare in oPt, as per the SSA reporting

**136 attacks** were recorded in oPt since the escalation of violence in October 7th 2023.

Number of attacks against health care per year (2020-2023)



Number of attacks against health care per month (Year 2023)



---

## Health System Capacities and Needs - Israel

- Israel has a highly developed healthcare system, with emergency healthcare services readily available. In 2019, health expenditure was 7% of GDP.
- MoH Israel has updated an additional resource for mental health and trauma support for displaced persons from communities near the border with the Gaza Strip.
- Reports from the MoH have noted that people evacuated their homes in southern Israel without bringing prescription/medications.
- As of 12 October 2023, no requests for supplies from WHO support from Israel.

# Health System Capacities and Needs – Gaza Strip Overview

- **4 out of 35 hospitals** are not functional
- **4 main hospitals with surgical capacity north of Wadi Gaza** (out of a total of 7 in the Gaza strip), and **only 3 hospitals in the South**.
- **Chronic shortage of medical supplies** prior to the escalation of violence.
- Functionality of health services is further jeopardized by **lack of fuel, NFI, food and clean water**.

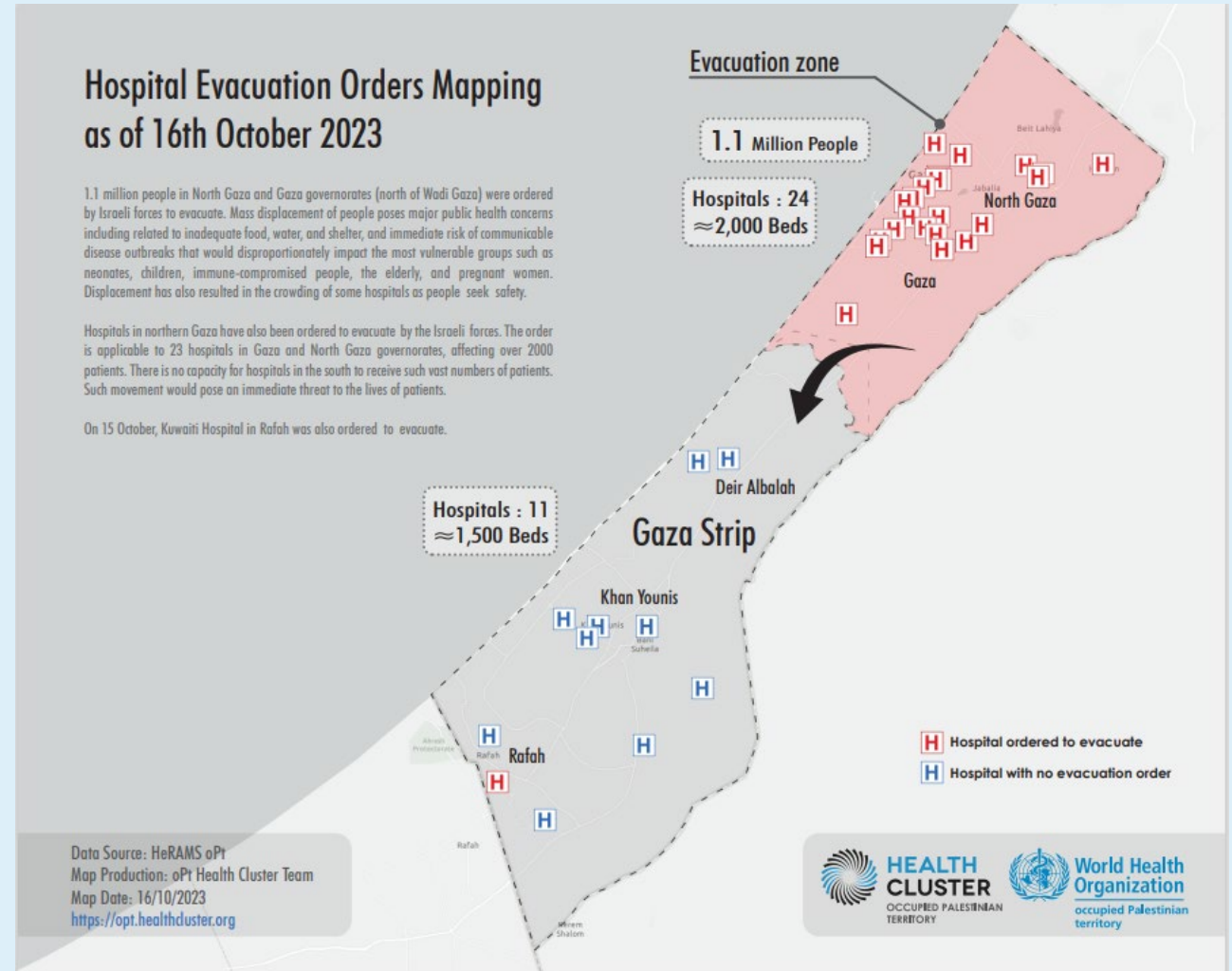
Gaza: Hospital capacity (as of July 2023)





## Impact of the evacuation orders on hospitals and patients

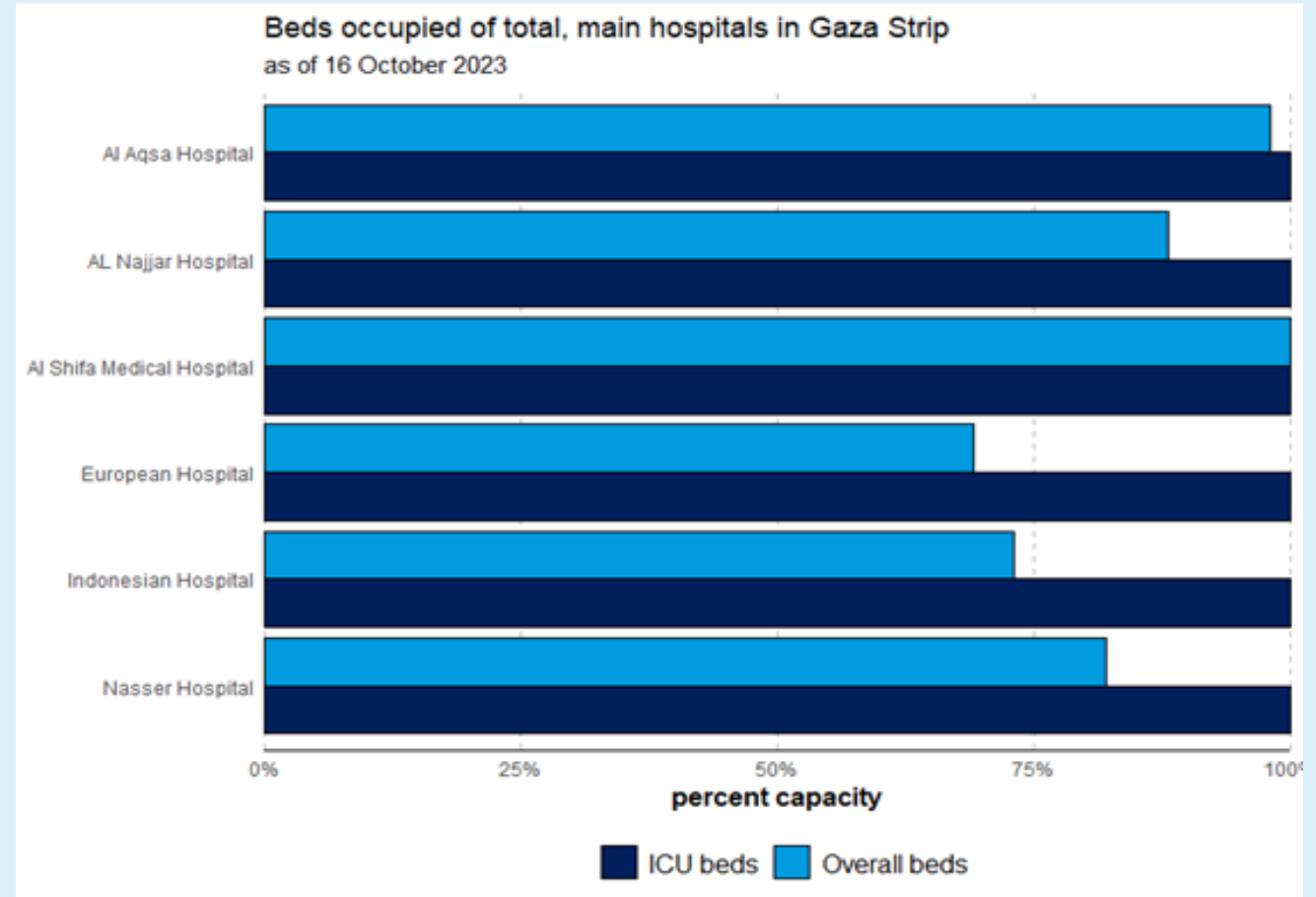
- **23 hospitals** have been **ordered to evacuate**, in **Gaza city and North Gaza**
- The total bed **capacity** for the hospitals in the North is estimated at **2000 beds**
- There are 11 hospitals in the southern part of the Gaza strip, amounting to **only 1500 beds** in terms of capacity.
- The evacuation will put the lives of **hundreds of patients in extremely vulnerable and life-threatening situation**
- **Hospitals in the South don't have the capacity** to accommodate the influx of patients from the North



## Bed Capacity / Occupancy

- 6 out of the 7 main public hospitals with surgical capacity are functional.
- The 6 main functional hospitals have an average bed occupancy of 90%, with 2 hospitals, Al Shifa and Al Aqsa both reaching their maximum capacity (despite Al Shifa hospital increasing its capacity to 700 beds)

Overall and ICU bed occupancy for the main functioning public hospitals (N=6)



# Al Shifa Hospital

- The largest medical complex and largest central hospital in the Gaza strip
- The total bed capacity for the hospital is 650, increased recently to 700 to accommodate for the influx of patients, including 86 ICUs
- The hospital has reached full bed occupancy, despite expanding its capacity, including ICU beds.
- The hospital has reportedly no electricity and the backup generators are running out of fuel.
- Medicines and medical supplies are reportedly low.
- Most of the injured are children and elderly, according to a surgeon from the hospital.
- The hospital morgue is overflowed with the dead bodies
- The hospital is also hosting more than 35 000 IDPs that are taking refuges in hospital halls as last resort



*Entire families taking refuges at the AL Shifa hospital in Gaza (Al Jazeera)*



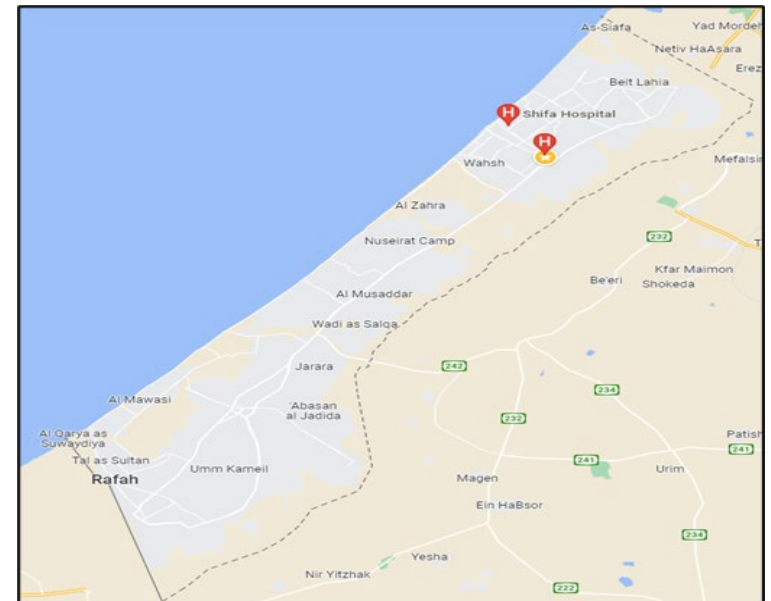
*Ambulances carrying victims of Israeli strikes crowding the entrance to the emergency ward of the hospital on Sunday (AFP)*

# Al Ahli Arab Hospital (Baptist Hospital)

<b>About</b>	Founded in 1882, Al Ahli provides free mobile clinics to villages across Gaza and offers specialized support for different community groups
<b>Management</b>	NGO - managed by the Episcopal Church in Jerusalem and supported by American Friends of the Episcopal Diocese of Jerusalem (AFEDJ)
<b>Functionality</b>	Non-functional as of 17/10/23 following explosion
<b>Attacks/ damage</b>	<ul style="list-style-type: none"> <li>17 October 2023: Explosion killed hundreds (200-500 plus) people and injured 600 at the hospital. The death toll was by far the highest of any single incident in Gaza during the current violence.</li> <li>14 October 2023: Damaged by explosion, partially damaging two floors and damaging the ultrasound and mammography room. Four people were injured.</li> </ul>
<b>Capacity</b>	<ul style="list-style-type: none"> <li><b>Beds:</b> 80-bed hospital, 3 neonatal incubators and 0 ICU beds.</li> <li><b>Outpatients:</b> Before crisis, hospital saw 3,500 outpatient visits a month.</li> <li><b>Other:</b> Handles about 300 surgeries and 600 radiological visits a month.</li> <li><b>Electricity:</b> In 2021, the hospital reported spending an average of \$1,800 a day on diesel fuel to run its generators up to 20 hours.</li> </ul>
<b>Supply status</b>	TBC
<b>Evacuation/ Displacement</b>	<p>The hospital was one of 20 in the north of the Gaza Strip facing evacuation orders from the Israeli military.</p> <p>The compound hosted patients and internally displaced persons (IDPs) seeking safe shelter (approx. 4000)</p>



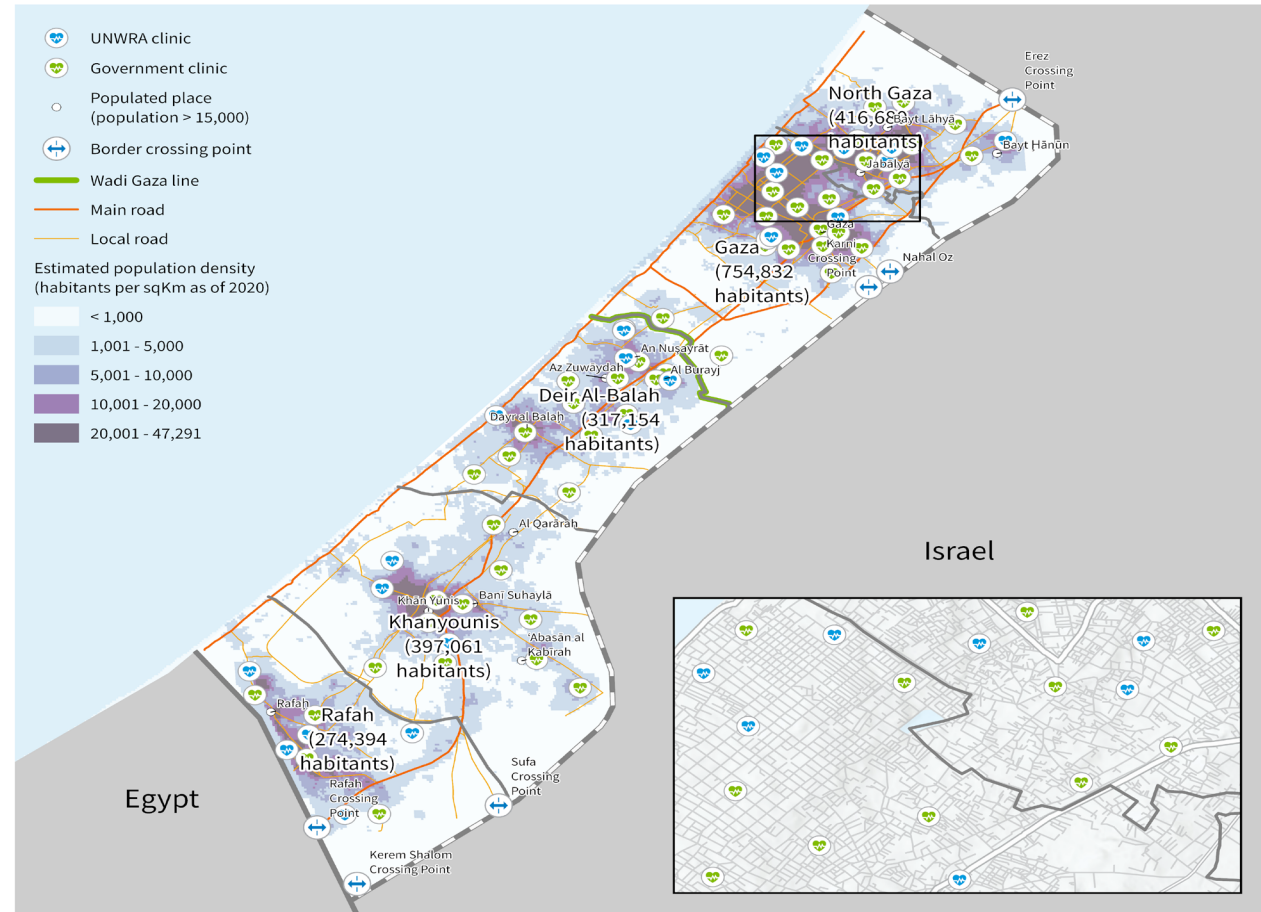
People gather around bodies of Palestinians killed in the strike on al-Ahli hospital in central Gaza after they were transported to al-Shifa hospital on October 17, 2023. © Dadwood Nemer, AFP



# Public Health Centers (PHCs)

- Only **23 out of 52 MoH PHCs have trauma management capacity**, while there is no information on 30 PHCs regarding level of functionality.
- 66% (33/50) of Ministry of Health primary care facilities closed including one due to severe damage.
- Only 8 out of 22 UNRWA health centres are operational across Gaza providing primary health-care services, with estimated supplies of less than one month.

**Gaza: Primary Health Care (PHC facilities) and estimated population distribution**  
(Population data as of 2020)



The designations employed and the presentation of the material in this publication do not imply the expression of any opinion whatsoever on the part of WHO concerning the legal status of any country, territory, city or area or of its authorities, or concerning the delimitation of its frontiers or boundaries. Dotted and dashed lines on maps represent approximate border lines for which there may not yet be full agreement.

Data Source: World Health Organization, OCHA, HeRAMS, Geonames, WorldPop, ESRI  
Map Production: WHO Health Emergencies Programme  
Map Date: 17 October 2023



---

# WHO and Partners Operations

# WHO Operations

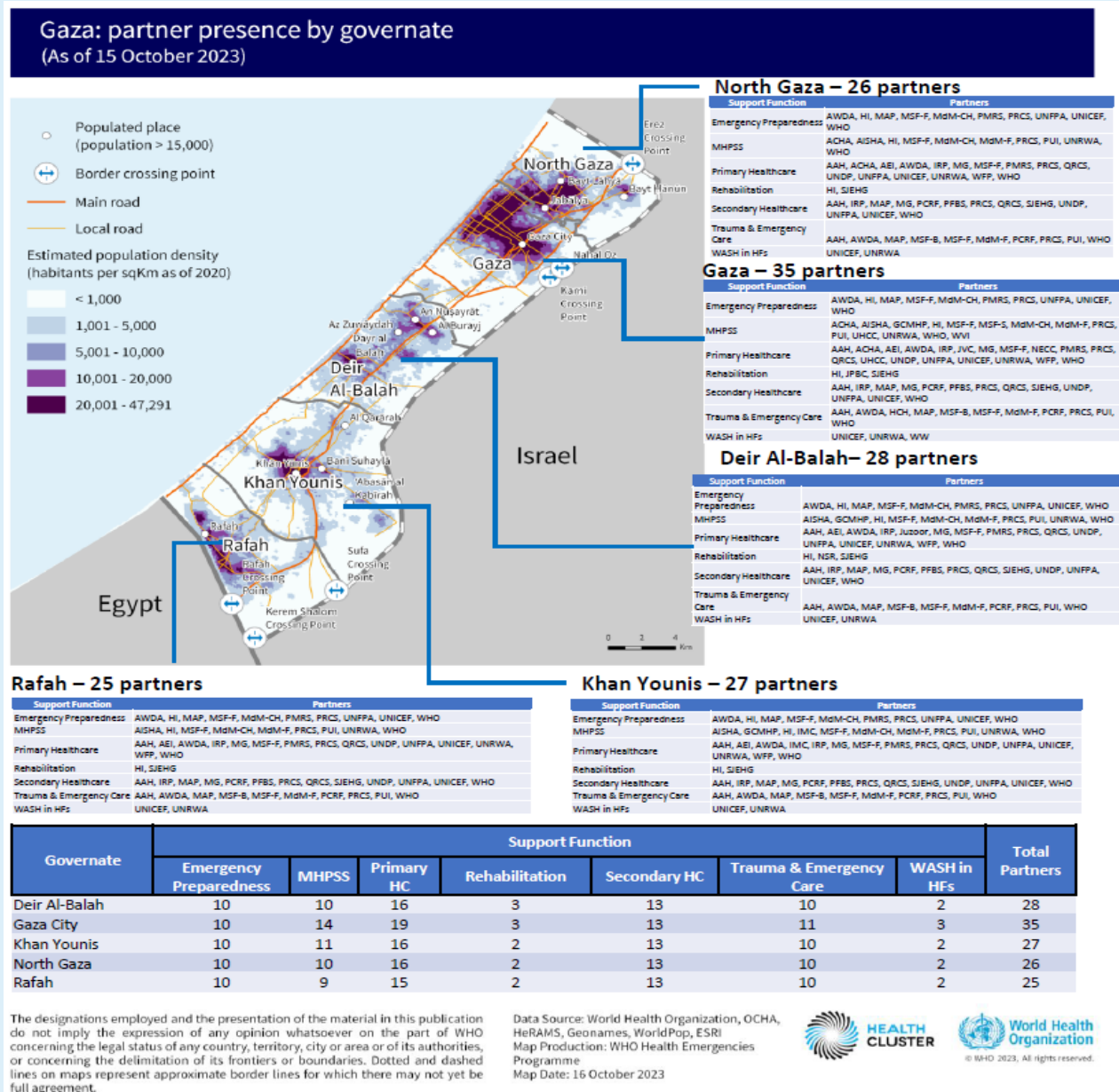
- WHO Supplies in Al Arish (value of USD 1.5 million, 78MT, including IEHK, TESK, NCD kits, trauma bags, stretchers and tents)
- The supplies are enough **to care for more than 300 000 patients** The supplies will be delivered in coordination with the Egyptian Red Crescent (ERC) and the Palestine Red Crescent Society (PRCS).
- The second chartered expected to arrive imminently with **35 MT of medical supplies**.
- Medical supplies (trauma kits amounting to 13 MT) have also been shipped to Lebanon on 15 October 2023 for contingency.
- **Expression of interests from the Emergency Medical Teams (EMT) network have been submitted** for Egypt, Israel and oPt with teams of varying capacities.
- Multiple hospitals and health facilities have activated **WHO-supported mass casualty management (MCM) plans** and protocols. Medical staff was trained by the WCO before the escalation on mass casualty management.



*Lifesaving WHO health supplies land in Egypt for people-in-need in Gaza (WHO)*

# Health Partner Operations

- **39 Health Cluster partners** across the Gaza district, including UN agencies, INGO and NNGO. (cf. figure)
- **WHO and UNRWA managed to deliver 10 600 litres of fuel to Al Shifa recently**
- **Health cluster partners continue to provide support where possible but are operating at reduced capacity.**
- **UN agencies have been prepositioning supplies in Egypt, while NGO partners lack the capacity.**
- **The logistics cluster has been activated to support humanitarian partners in terms of provision of supply.**





---

# Resource Mobilization

- WHO Health Emergency Appeal for oPt (pre escalation) for 2023 amounted to 24.6 million US\$, which is only 50% funded to-date.
- WHO has released 8.6 M US\$ from the WHO Contingency Fund for Emergencies (CFE)
- Launching of the health cluster flash appeal amounting to 23.1 US\$ to cover the health needs of 600 000 people over 3 months.
- oPt Humanitarian Fund has allocated \$2.5 million for health for prepositioning by 3 cluster partners
  - MAP - Procurement of available medical supplies in the Gaza market and through Egypt, pending movement coordination.
  - AWDA - Medications procurement and provision of essential life-saving medical equipment.
  - PMRS - Outreach for the injured and mobile clinics to shelters (when movement is feasible).

---

# Key Messages

---

# Key Messages

- WHO appeals for:
  - Protection health facilities, health workers, patients and all civilians . Attacks on healthcare constitute a flagrant violation of international humanitarian law.
  - Access to health for everyone, including people in captivity
  - Reversal of the evacuation order, to avoid the catastrophic impact that this will have on the population living in Gaza
  - Ensuring humanitarian access into Gaza by providing safe access of health workers to hospitals, ensuring delivery of medicines and medical supplies, and restoring supply of electricity and water

---

# Thank you