



FEDERAL MINISTRY OF HEALTH

---

THE REPUBLIC OF THE SUDAN

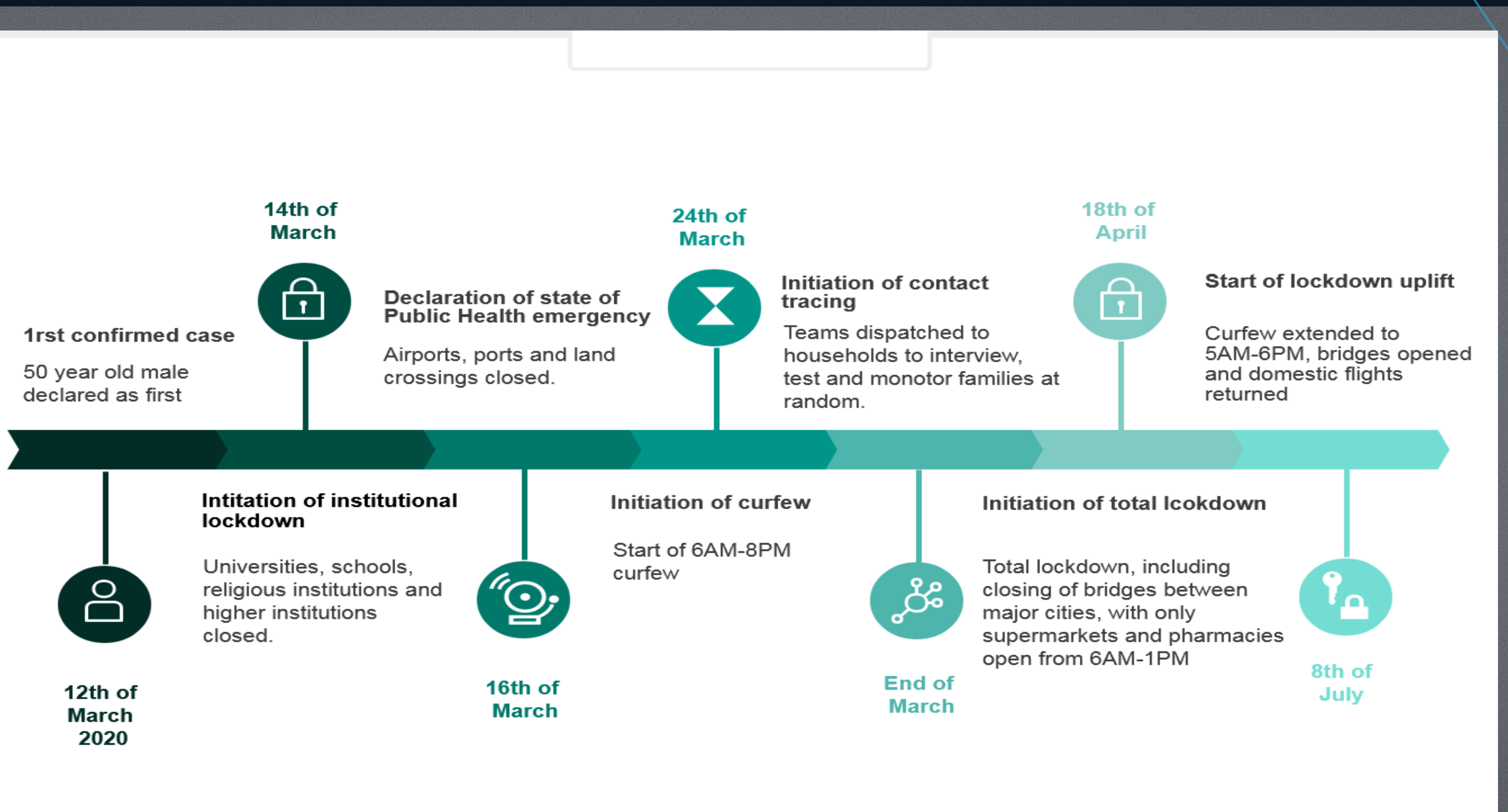
# INTRODUCTION



- Population of Sudan: 41.8 million
- Area of Sudan: 1,886,068 km<sup>2</sup>
- Neighbouring countries: Egypt, Eritrea, Chad, South Sudan, Ethiopia, Libya, Central African Republic
- 65% of the Sudanese population lives below the poverty line



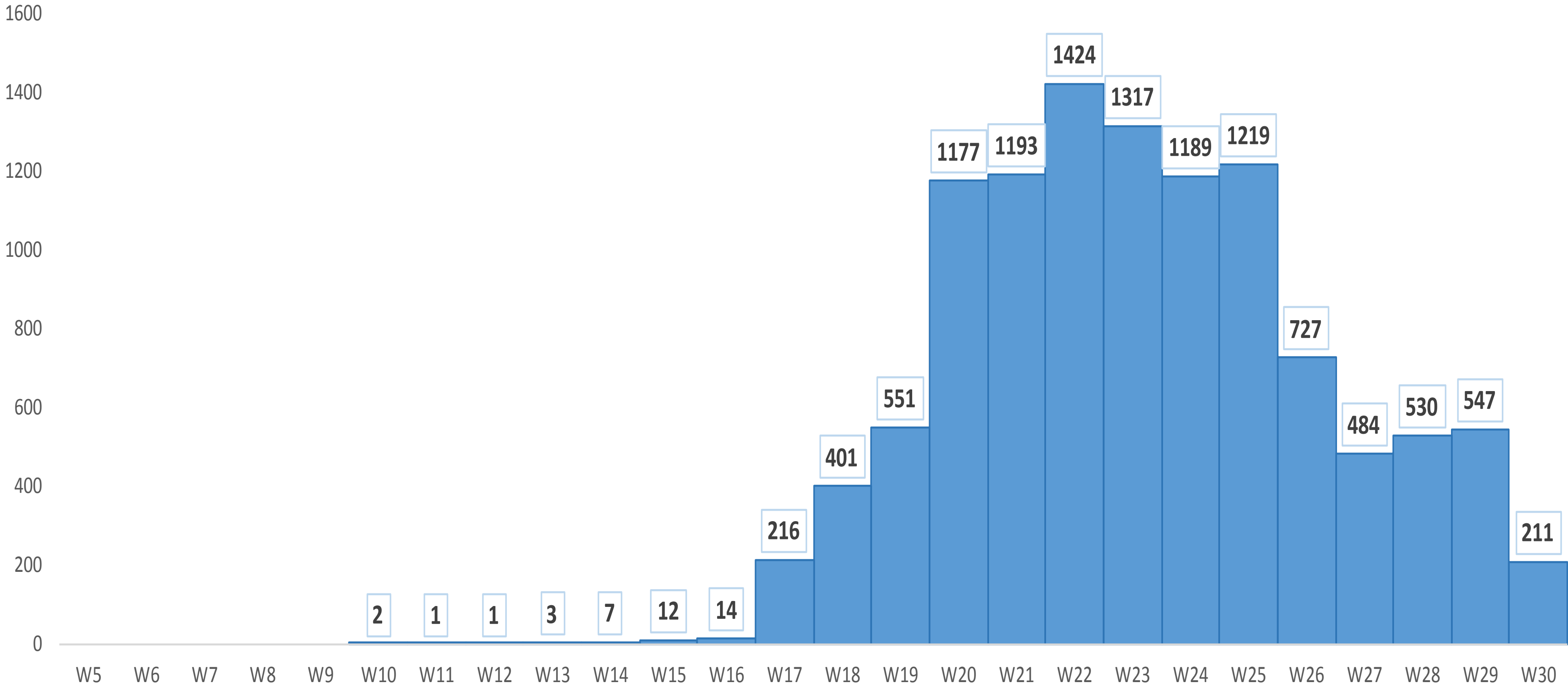
# TIMELINE OF EVENTS



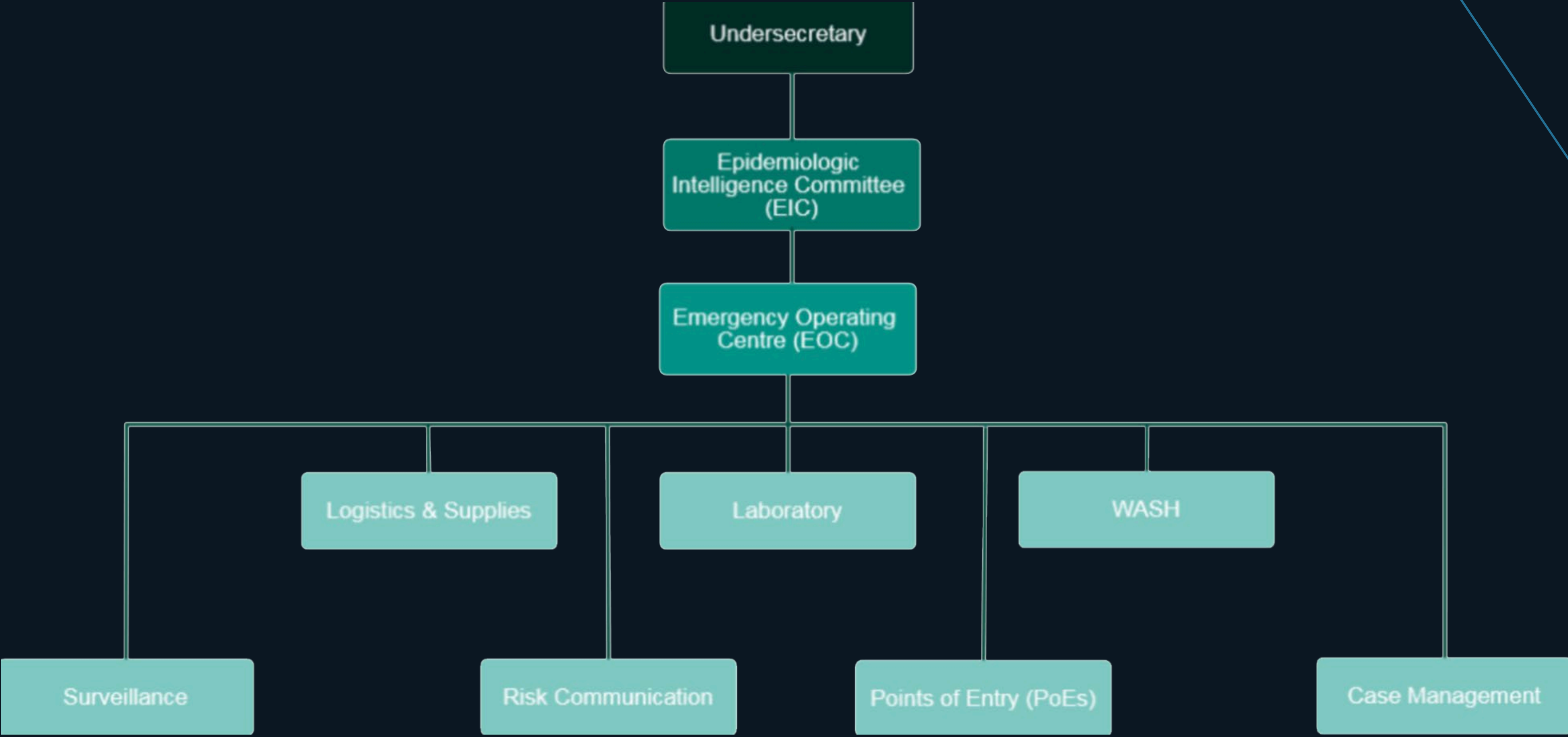
# CURRENT COVID-19 STATUS

Distribution of COVID-19 cases by Epidemic weeks (w5 - w30)2020

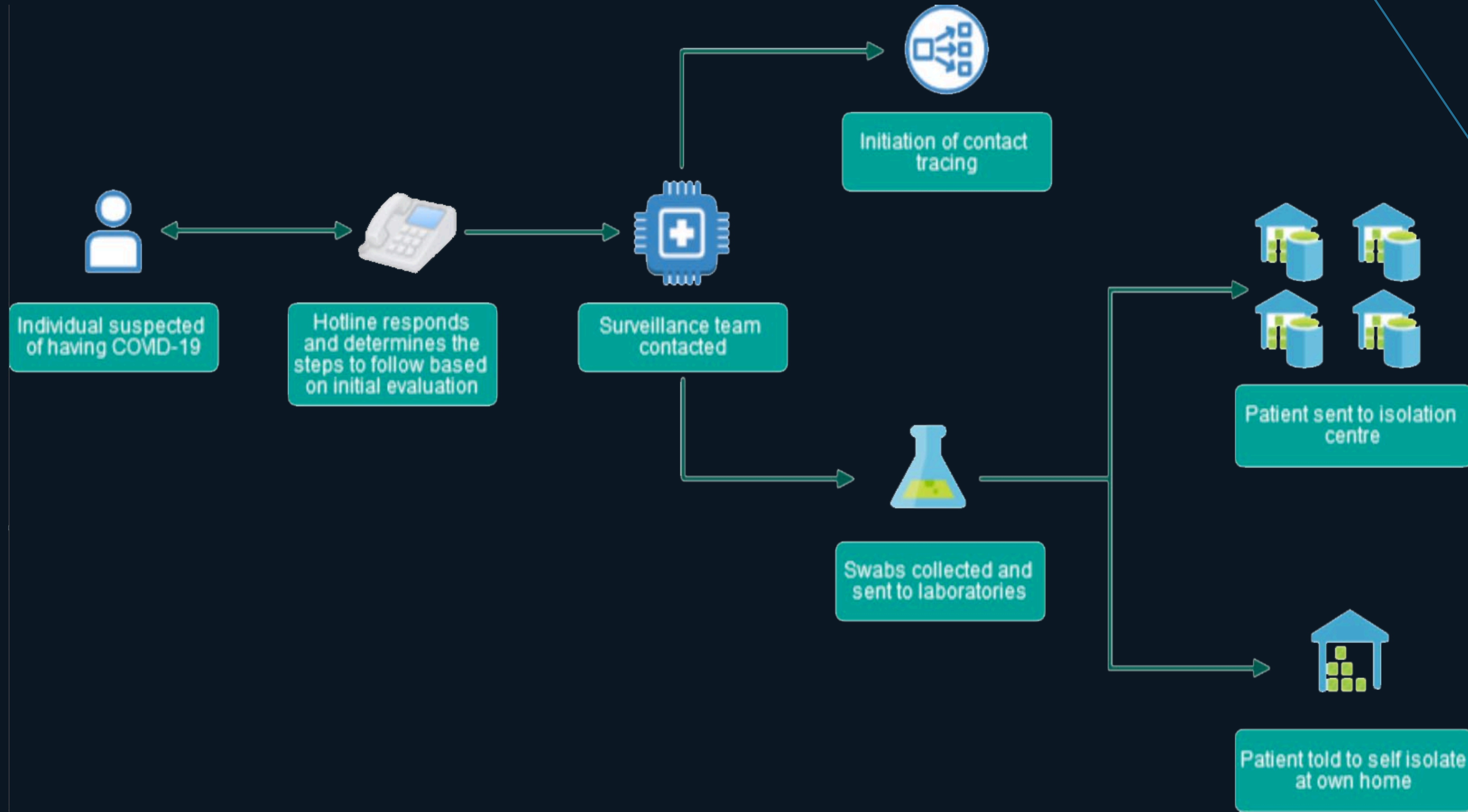
N = 11226



# COVID-19 TECHNICAL COMMITTEES

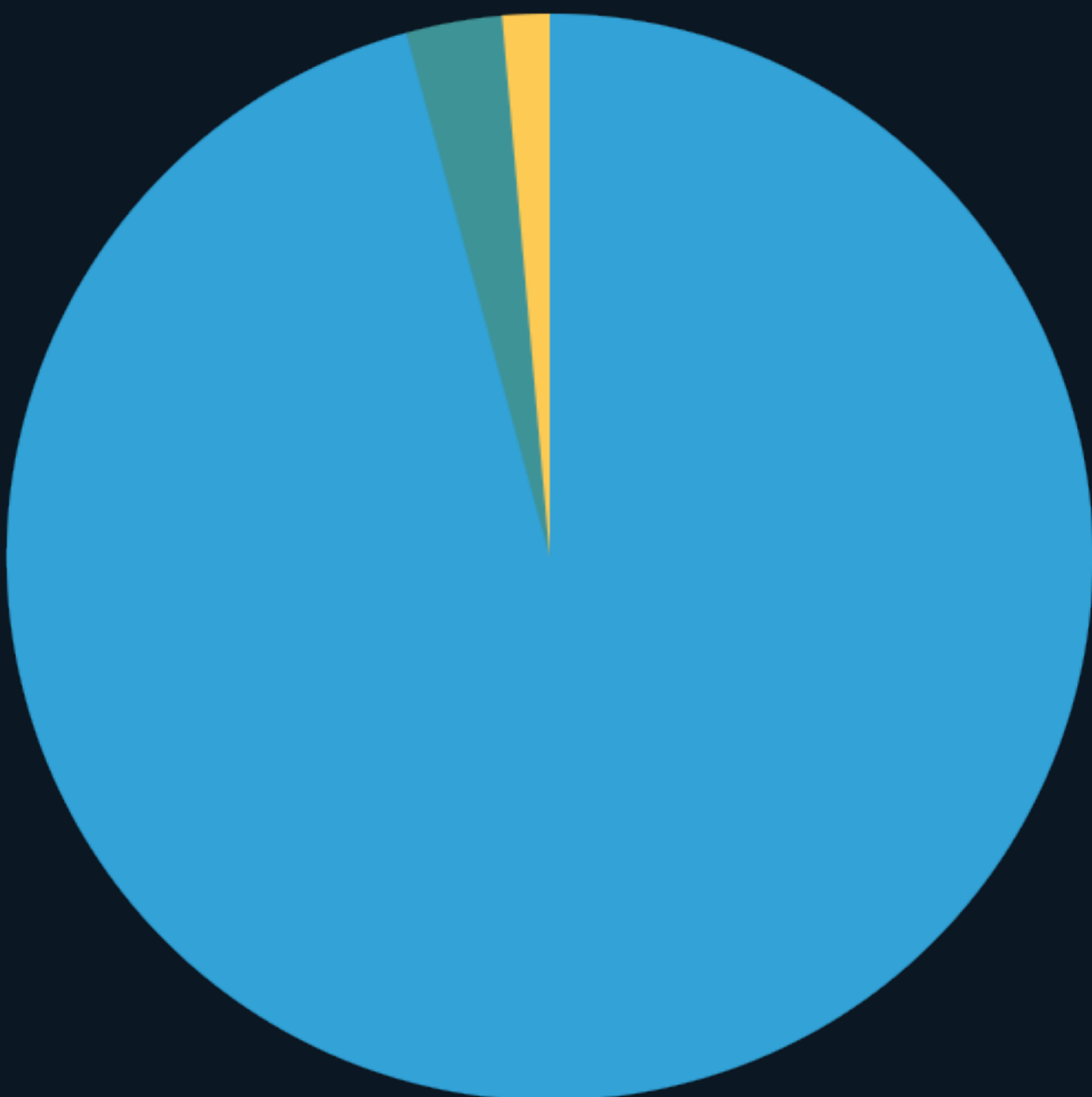


# PROCESS OF REPORTING COVID-19 CASES



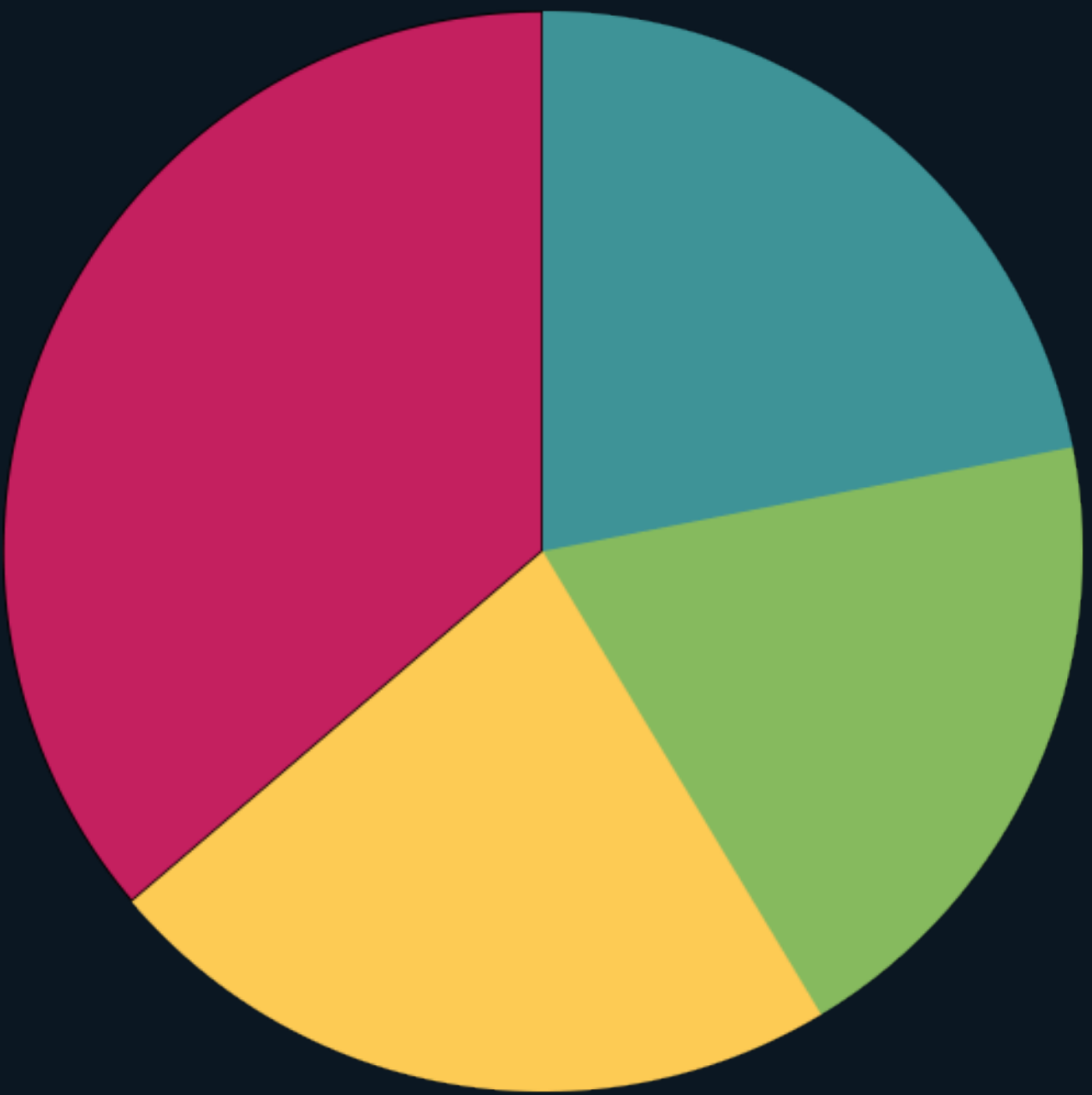
# RESOURCE MOBILISATION

Graph # 1: Monetary Funding by Organisation Type



- Bilateral / Multilateral Agencies
- International Civil Society / NGOs
- Local Civil Society / NGOs
- Private Sector Org
- Public Sector Org

Graph #3: In-kind Funding by Organisation Type



- Bilateral / Multilateral Agencies
- International Civil Society / NGOs
- Local Civil Society / NGOs
- Private Sector Org
- Public Sector Org
- UN Agencies

