



# THE COVID-19 EXPERIENCE IN THE BAHAMAS

---

Dr. Pearl McMillan  
Chief Medical Officer

JUNE 2020



# The Pandemic is Not Over

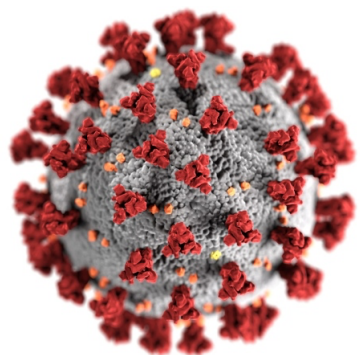


Success with containment and mitigation measures thus far

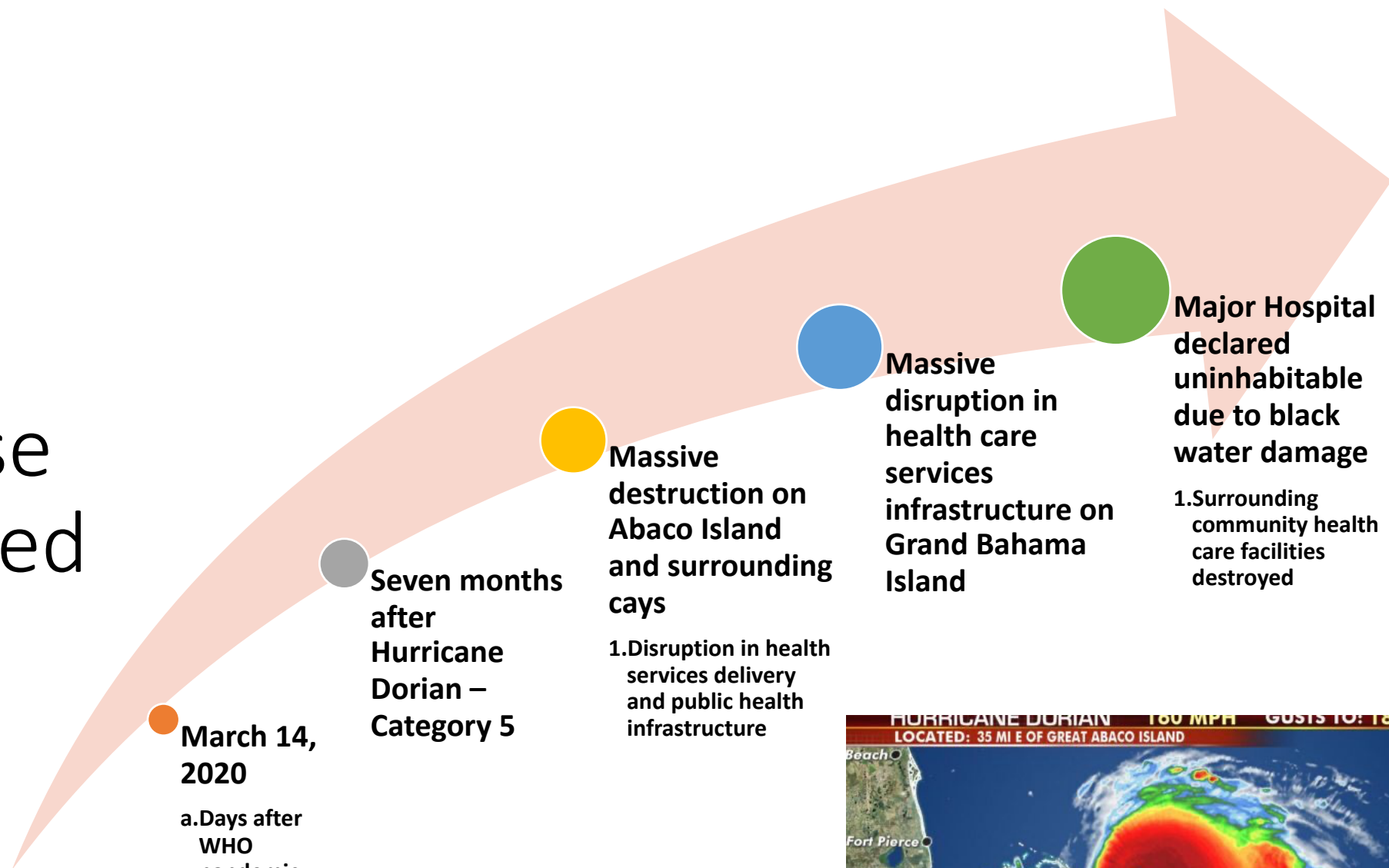
Proven public health measures – hand and respiratory hygiene, physical distancing

Border restrictions, Curfews & Lockdowns

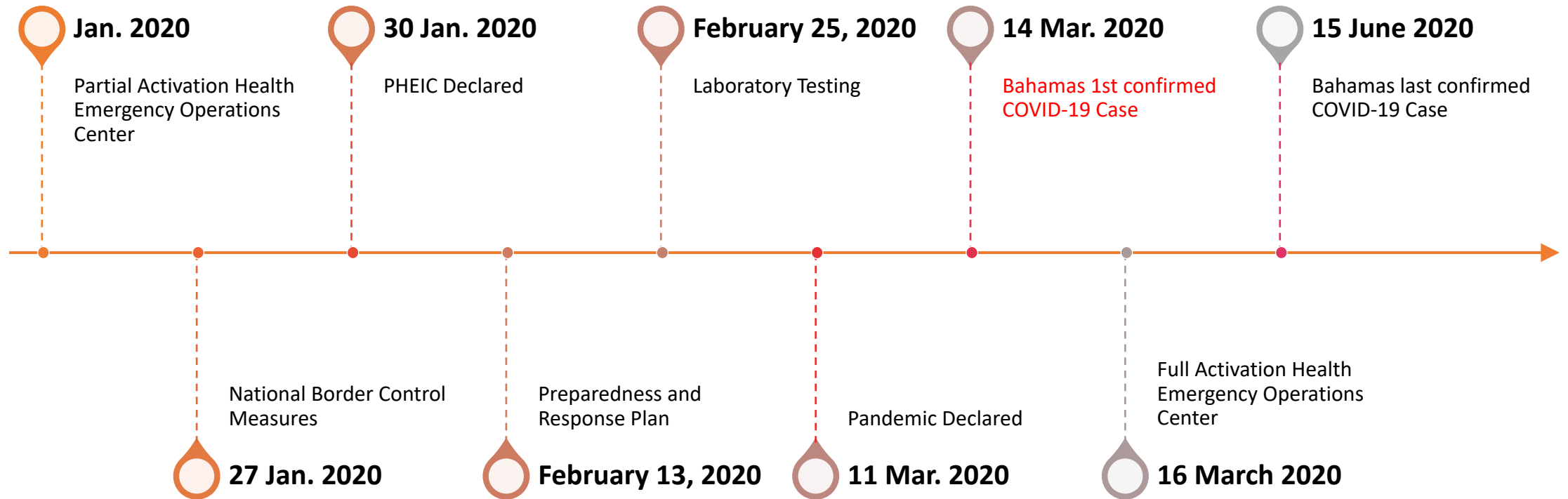
Not out of the woods yet!  
Cannot become complacent!



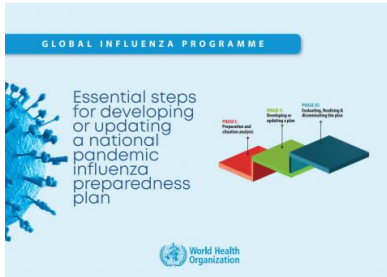
# First Case Diagnosed



# National Context



# Previous Preparedness for Emergencies

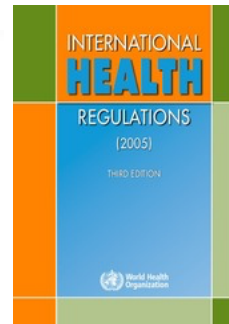


2008

**Pandemic Influenza  
Preparedness Planning**



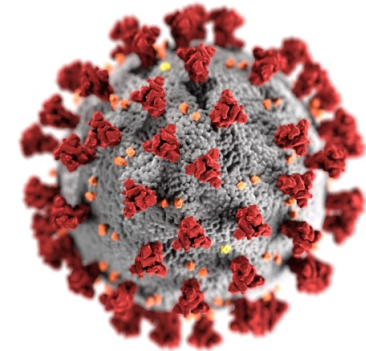
**Integrated into general  
emergency preparedness**



**A “whole-of-society”  
approach to  
pandemic influenza  
preparedness**



**Served us well but not  
enough!**



# COVID-19 Response Requirements



SERVICES



EQUIPMENT  
AND INVENTORY



LABORATORY  
CAPACITY



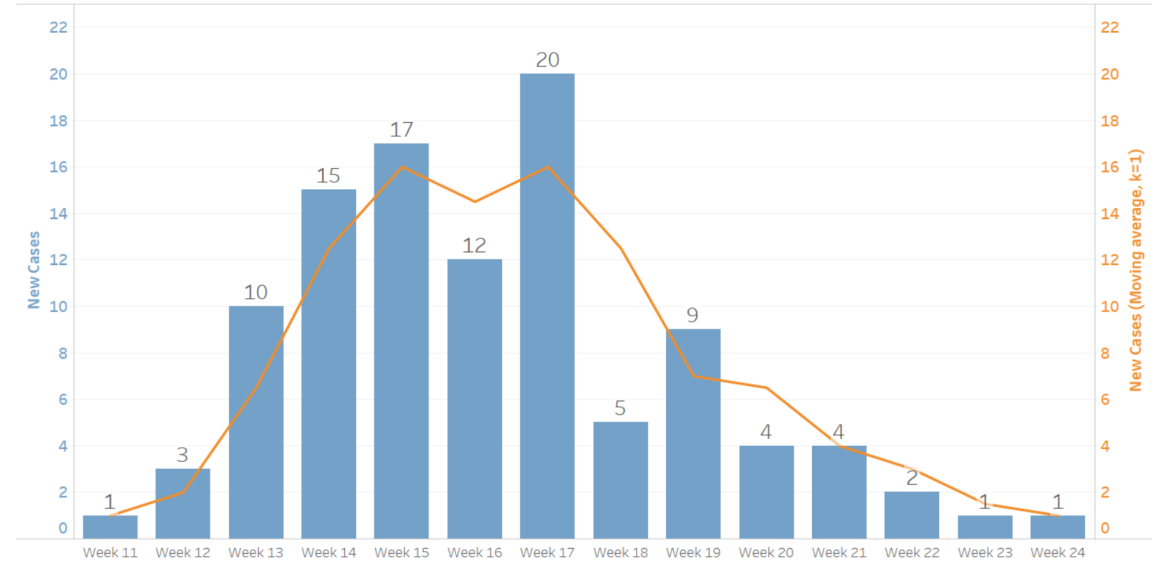
PERSONNEL



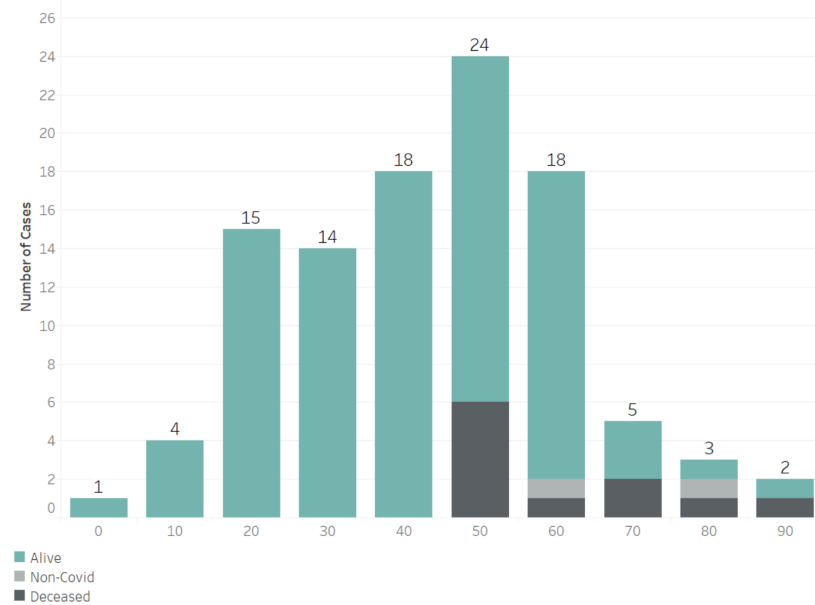
FINANCIAL

# Characteristics of the Epidemic

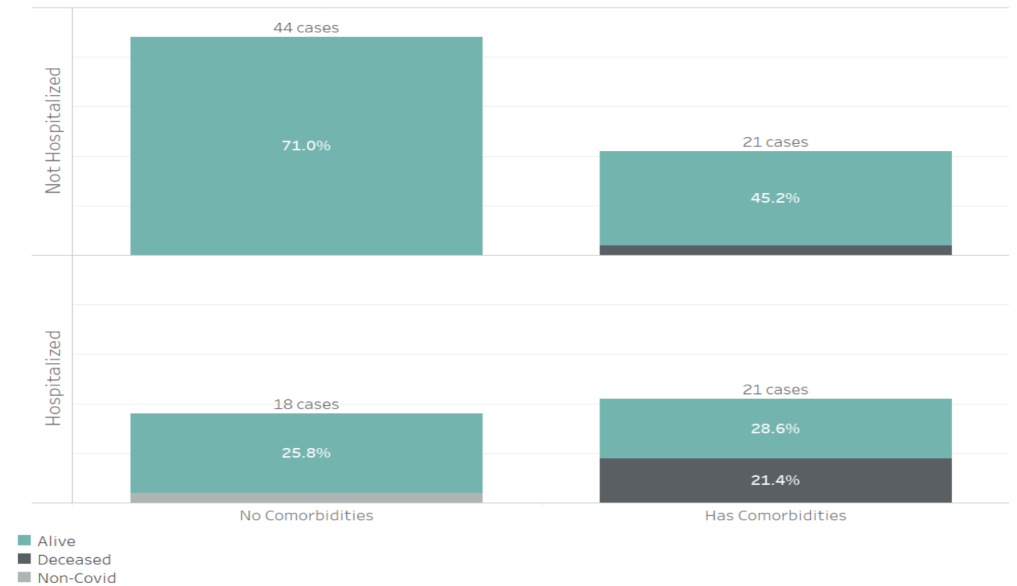
Number of COVID-19 cases per epi week for The Bahamas, up to case 104 (Epi week 26).



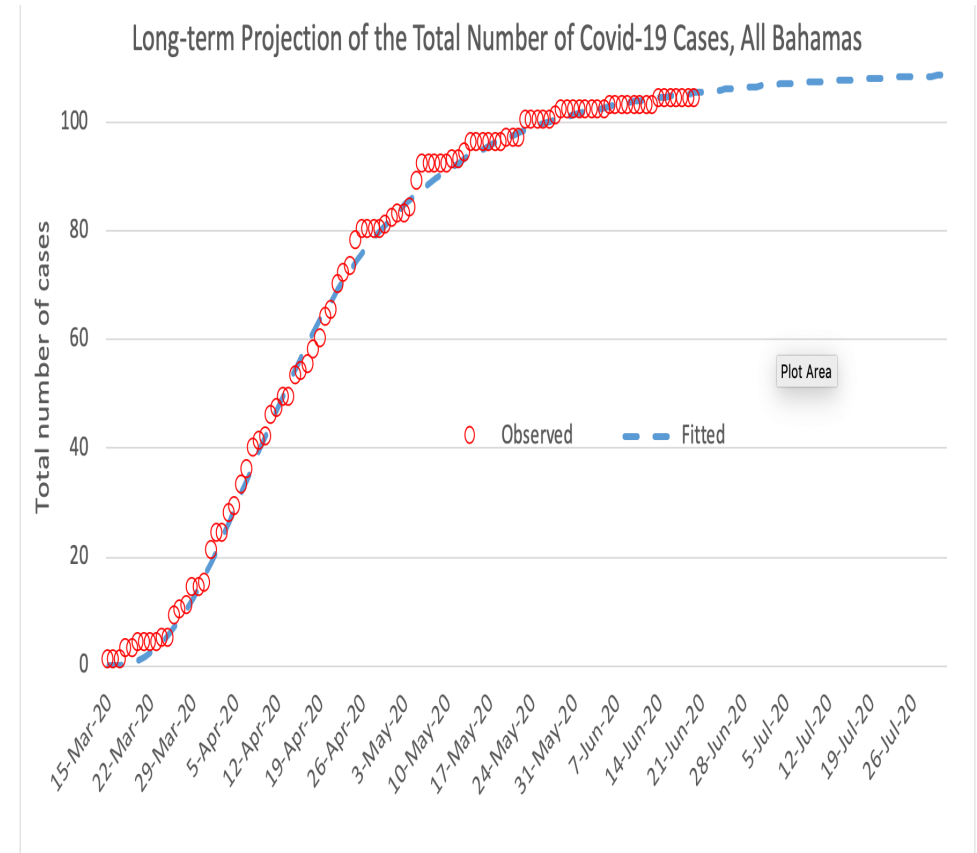
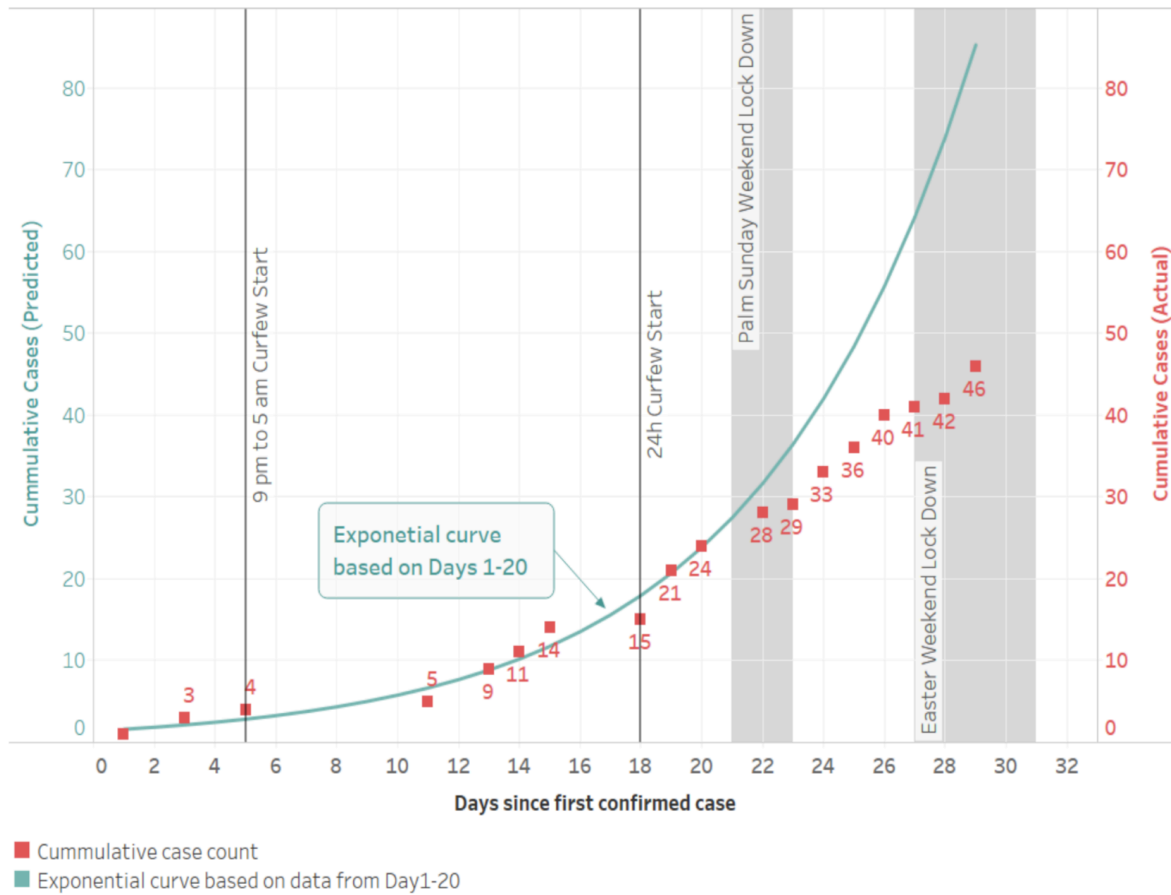
Number of COVID-19 cases by fate and age group, up to case 104



Patient fate and comorbidities for COVID-19 cases.



# Outcome of Public Health Measures







# A Measured Plan for Re-Opening Economy

Contingent on advice of Health Officials

27 April 2020

## Phase 1a

### ESSENTIAL SERVICES & HURRICANE PREPAREDNESS

#### **Economic**

**Essential** businesses.

**NGOs** & churches providing food to the needy by permission.

**Home** & Hardware, nurseries and auto parts stores permitted 2 days in store.

**Property** management, and Landscaping, Monday - Friday.

**Manufacturing** of PPE and sanitizers, Monday - Friday.

#### **Social**

**24-hour** curfew, Monday 5 AM - Friday 9 PM.

**Exercise** 90 minutes in neighborhood, Monday - Friday

**Lockdown** Friday 9 PM - Monday 5 AM.

**Exercise** on own property.

## Phase 1b

### DELIVERY & CURBSIDE SERVICE & CONSTRUCTION

#### **Economic**

**Businesses** that can provide goods and services through delivery and curbside pick-up, Monday - Friday.

**Home** & Hardware, nurseries and auto parts stores can expand to 5 day online delivery and curbside services.

**Permit** construction in Nassau with Industry Protocols, Monday - Friday.

#### **Social**

**Relax** restrictions on exercise.

## Phase 2

### EXPANDING OPERATIONS

#### **Economic**

**Resume** business operations in Family Islands with no presence of COVID-19.

**Increase** businesses that can scale up to operate via delivery and curbside.

**Add** service, healthcare and manufacturing industries that can develop industry protocols to maintain social distancing and safety precautions.

#### **Social**

**Worship** services with strict social distancing and masks.

**Relax** restrictions on exercising even further.

## Phase 3

### BEGINNING THE NEW NORMAL

#### **Economic**

**Introduce** non-essential storefront business operations with essential staff required to allow the business to function.

**Must** have posted protocols and train staff. Number of customers limited based on store square footage.

**Manage** lines in store and outside with markers and security staff.

#### **Social**

**Limited** educational operations (including national examinations based on appropriate social distancing and masks).

**Relax** restrictions on weddings, funerals and social gatherings.

**Re-open** beaches and public parks with social distancing.

## Phase 4

### MOVING FORWARD

#### **Economic**

**Introduce** restaurants, cultural facilities, gyms, movie theaters and entertainment facilities to operate with social distancing protocols inclusive of masks.

**Resume** office operations with strict social distancing.

**Personal** services such as hair care and nails with PPE.

#### **Social**

**Expanding** educational operations with social distancing protocols.

**Domestic** travel to commence with strict screening and protocols.

**Group** exercise or recreation with social distancing.

## Phase 5

### RE-STARTING TOURISM & OPENING THE BORDERS

*Currently working with industry and regional partners to ensure a strong rebound that will meet global health standards and protocols.*

#### **Economic**

**International** travel resumes with strict safety protocols to ensure The Bahamas is a safe destination.

**Hotels** in full operation with appropriate safety protocols.

**Tourism** and transportation related businesses resume with safety protocols.

#### **Social**

**Public** transportation resumes with safety protocols.

**Restrictions** lifted on movement.



Thank You!

---