



**World Health  
Organization**

# Country consultations for the Global Health Estimates & Estimates of excess mortality associated with COVID-19 pandemic

## Member States Information Session

31 October 2022

# Agenda

---



## 01 Opening remarks and objectives

Steve MacFeely, Director, Department for Data and Analytics,  
Division of Data, Analytics and Delivery for Impact

## 02 Country consultation process

Saki Narita, Technical Officer

## 03 Updates to the Global Health Estimates & excess mortality estimates

Bochen Cao, Technical Officer &  
William Msemburi, Technical Officer

## 04 Feedback and discussions

Facilitated by Saki Narita

## 05 Next steps and closing

Haidong Wang, Unit Head, Monitoring, Forecasting &  
Inequalities Unit



**World Health  
Organization**

## Opening

**Dr. Steve MacFeely**

**Director, Department for Data and Analytics**

# | Topics

- Quantifying COVID-19 and non-COVID-19 deaths and disability for 2020 and 2021
- Country consultation process
- Updates to the estimates
- Next steps
- References



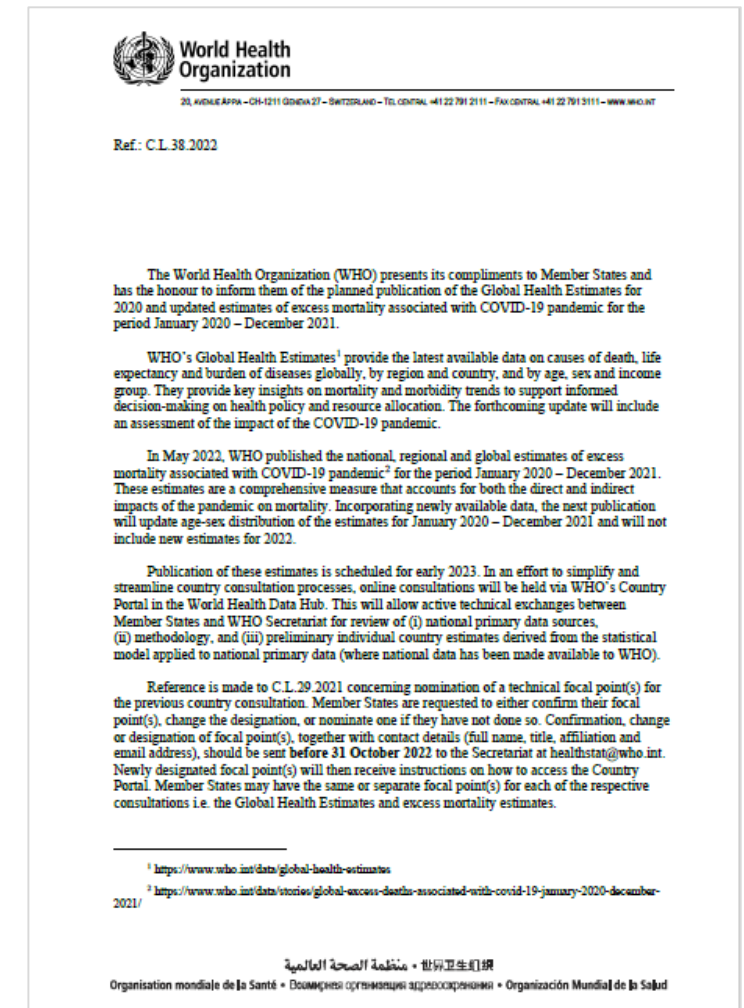
World Health  
Organization

# Country consultation process

Dr. Saki Narita  
Technical Officer

# Country consultation process

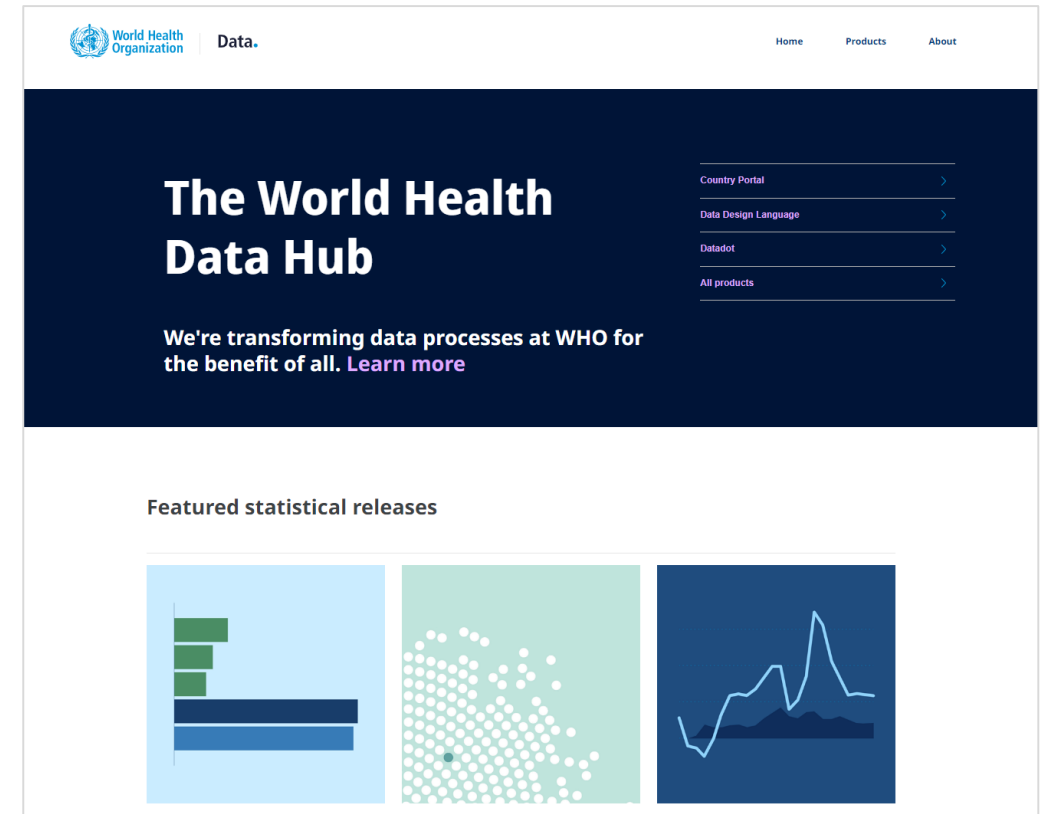
- Circular Letter (Ref: C.L.38.2022) sent to Member States in August 2022 calling for country focal point nomination and confirmation for consultations of:
  - Global Health Estimates
  - Estimates of excess mortality associated with COVID-19 pandemic
- Nominated national focal point/s will receive access to **Country Portal**, an online country consultation platform on WHO's World Health Data Hub
- **Preliminary country estimates and methods** will be shared securely through the Country Portal with respective national focal points



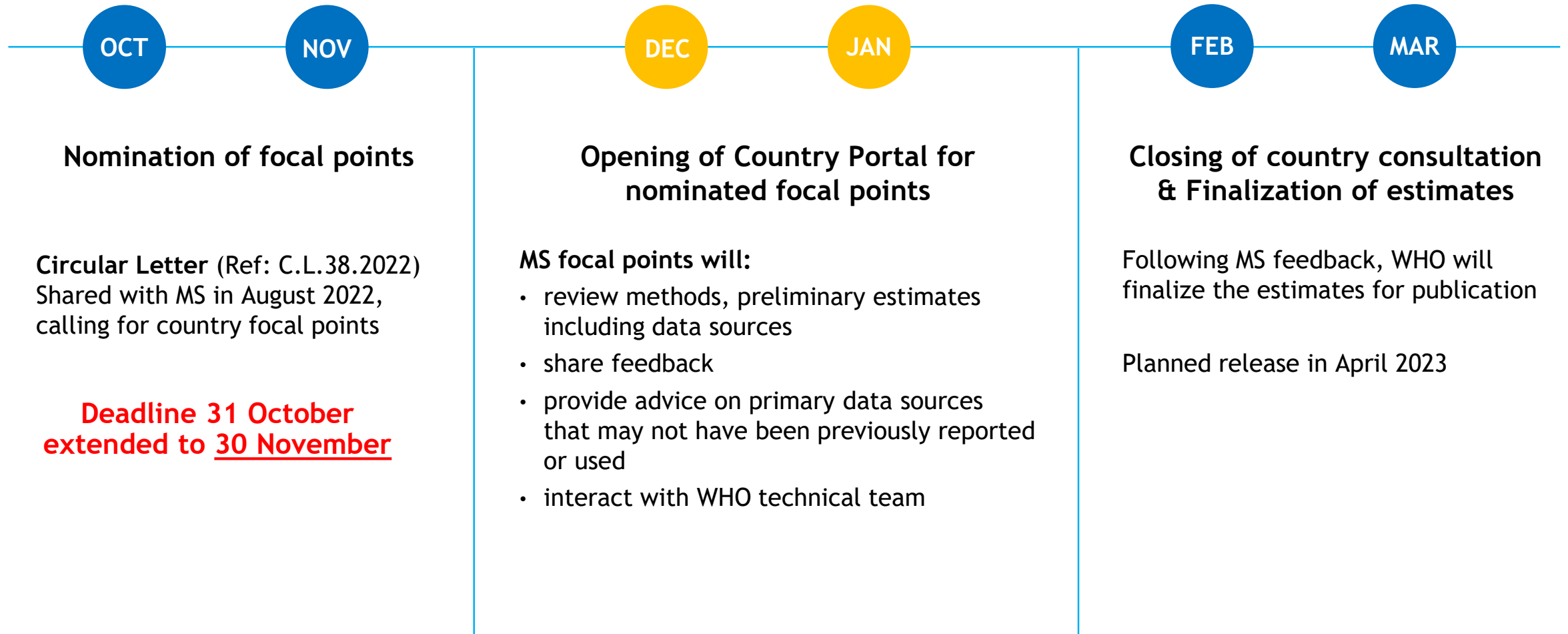
# Country Portal in the World Health Data Hub

*Helping everyone access, trust and act on health data*

- Country Portal provides country-specific engagement spaces for Member States (nominated focal points) and all three levels of WHO
  - ✓ User access
  - ✓ File sharing
  - ✓ Secure conversational spaces
  - ✓ Multilingual
- 141 countries have engaged in a Country Portal consultation



# Timeline - Online country consultation process







**World Health  
Organization**

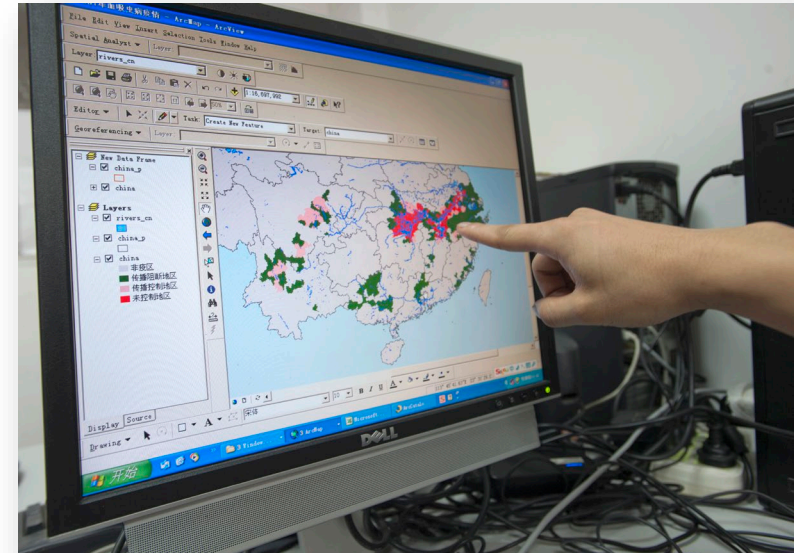
# Updates to the Global Health Estimates

**Dr. Bochen Cao**  
**Technical Officer**

# | What are Global Health Estimates (GHE)?



- WHO's official estimates of mortality and loss of health by country, sex, age, year, and cause.
- Report on annual health outcomes for over 160 diseases and injuries for WHO Member States from 2000 to 2021.
- Consolidates and harmonizes best available data from multiple sources, including national vital registration data, latest estimates from WHO technical programmes, UN partners and inter-agency groups, Global Burden of Disease and other scientific studies.
- Uses a variety of demographic, statistical and epidemiological methods based on the best scientific evidence.



# | Important use of the GHE data

- Monitor numerous health-related indicators pertinent to Sustainable Development Goals (SDGs) and WHO's 13th General Programme of Work (GPW13).
  - healthy life expectancy (HALE)
  - child mortality
  - maternal mortality
  - premature mortality due to non-communicable diseases
  - suicide mortality
  - mortality due to road traffic injuries
  - mortality due to homicide, natural disasters and conflict
  - mortality attributable to poisoning, air pollution and WASH
- Guide decision-making and resource allocation
- Inputs to WHO flagship publications and external products by the academic community and general public
  - World Health Statistics
  - Global Monitoring Report for UHC

## | GHE & COVID-19

- COVID-19 has had profound impacts on population health and has become one of the leading causes of deaths in 2020 and 2021.
- Accurately measuring the impacts of COVID-19 on population-level mortality and morbidity is critical for informing decision making.
- GHE 2021 will provide the most recent globally comparable data for the direct and indirect impact of COVID-19 on population health outcomes in 2021, by age and sex, at national, regional and global levels

# | Key updates in data and methods

- New data inputs:
  - Updated death registration data from countries up to 2021
  - Updated input mortality estimates for COVID-19 excess deaths, child mortality, HIV/AIDS, tuberculosis, malaria, and cause fractions of mortality from the Global Burden of Diseases 2021 (GBD 2021).
  - Updated estimates of disability from GBD 2021.
- Updated methods:
  - Improved methods for assessing the completeness of vital registration data
  - Improved methods for estimating age-specific all-cause mortality

# | GHE launch

- Date: April 2023
- Upgraded GHE website
  - access to the dataset and detailed technical documents
  - improved transparency, adhere to the Guidelines for Accurate and Transparent Health Estimates Reporting (GATHER)
  - highlighted key messages
  - interactive visualization tools



**World Health  
Organization**

# **Updates to the estimates of excess mortality associated with COVID-19 pandemic**

**Dr. William Msemburi**  
**Technical Officer**

# | Excess mortality associated with the COVID-19 pandemic

- Global, regional and country estimates for January 2020 to December 2021
- Age- and sex-disaggregated estimates
- Reported by WHO regions and World Bank income groups
- Point estimates and range



# Methods to estimate excess deaths by country, disaggregated by age and sex

1. Expected deaths were calculated using regression models that take annual and seasonal trends into consideration
2. The relationships between excess mortality and country-specific variables such as the reported COVID-19 rate are estimated using statistical models applied to the countries with reported data
3. The estimated relationships are used to predict excess mortality in the countries without reported data
4. Standard age- and sex-profiles for excess mortality are also established for 2020 and 2021 using data from the countries with reported data and applied to the countries without

Methodology available for download [here](#)

# | Methodology follows best practices

- Adherence to the Guidelines for Accurate and Transparent Health Estimates Reporting (GATHER)
- Enables Member States to replicate estimates as well as use country-specific input data for estimates
- Transparent process, methodology and code
- Technical Advisory Group serves as a peer review mechanism
- Interactive country consultation process

**Welcome feedback from Member States**



**World Health  
Organization**

## **Next steps**

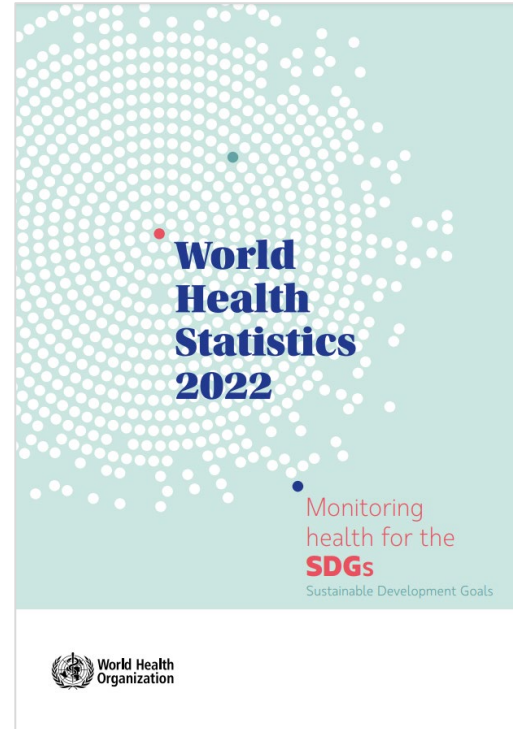
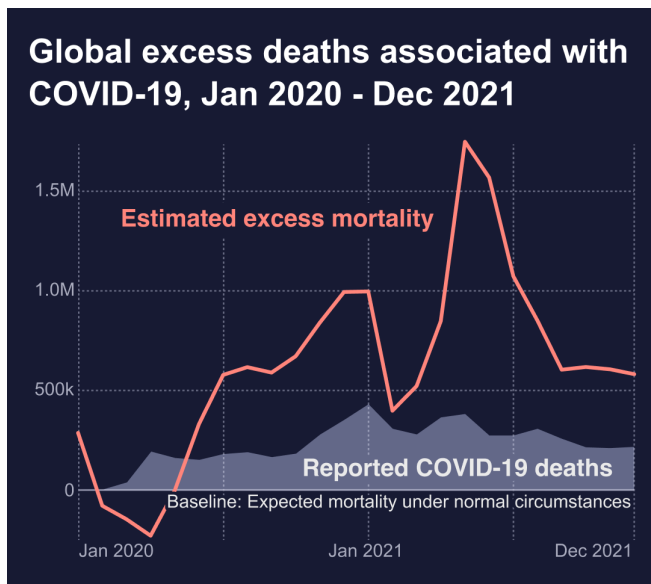
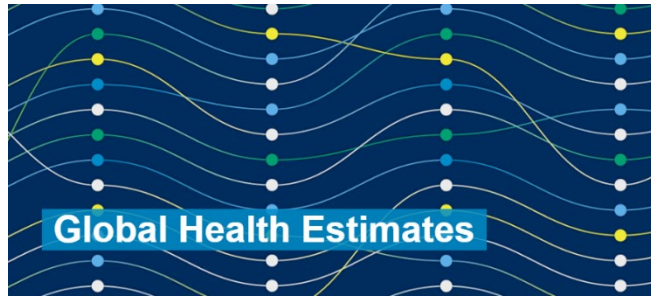
**Dr. Haidong Wang**

**Unit Head, Monitoring, Forecasting & Inequalities Unit**

## | Next steps

- Confirmation/nomination of national focal points to [healthstat@who.int](mailto:healthstat@who.int)
- Nominated focal points will be notified of the opening/closing of country consultations
- Release date will be communicated (Spring 2023)
- WHO will continue supporting countries to strengthen data and health information systems

# Monitoring progress towards SDGs



# | References

- Global Health Estimates:  
<https://www.who.int/data/global-health-estimates>
- Global excess deaths associated with COVID-19 pandemic:  
<https://www.who.int/data/stories/global-excess-deaths-associated-with-covid-19-january-2020-december-2021/>
- Global excess deaths associated with COVID-19 pandemic - FAQ:  
<https://www.who.int/news-room/questions-and-answers/item/global-excess-deaths-associated-with-the-COVID-19-pandemic>
- World Health Data Hub:  
<https://data.who.int/>

Please contact us @ [healthstat@who.int](mailto:healthstat@who.int)