
Traditional & Complementary Medicine (T&CM) for the WHO South-East Asia Region

**Dr Kim Sungchol
Regional Advisor for T&CM
for the WHO South-East Asia region**



**World Health
Organization**

Outline

- T&CM situation in SEAR
- Region's priority areas and progress
- Challenges & opportunity
- Experience and lessons learnt



T&CM situation in SEAR

- 11 Member States (MSs) accounts for 25% of global population
- 10 MSs: National policy, regulation on T&CM products
- 9 MSs: National office & program in health ministries; formal education system
- 7 MSs: co-located T&CM services along with allopathic medical care; 5 MSs: health insurance
- 7MSs: Research Institutes
- 6 MSs: Pharmacopeia/monographs;
- 5 MSs: Essential Medicine policy;
- 4 MSs: Safety monitoring system



Region's priority areas

□ WHO Global T&CM strategy 2014-2023 (2014)

1. Build knowledge base
2. Strengthen regulatory system
3. Promote UHC through integration

□ Regional resolution SEA/RC67/R3 on T&CM (2014)

□ Regional meeting on T&CM in Oct., 2015

□ Region's priority areas (2015)

- Research capacity building
- M&E on TM system performance
- Safety & Quality monitoring for T&CM products
- Integration



Regional workshop to share experience and evidence on appropriate integration of traditional medicine into national health-care systems

Report of the Regional Workshop
Pyongyang, Democratic People's Republic of Korea,
20 – 22 October 2015



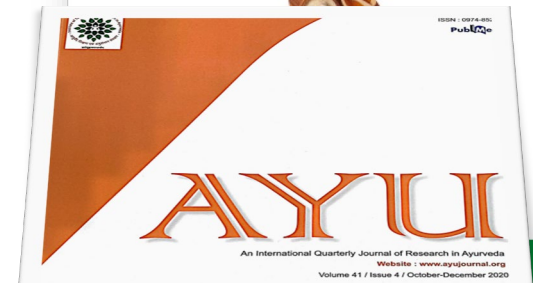
World Health
Organization

1. Research capacity building

- ❑ Regional **workshops** on T&CM research methodologies for the WHO South-East Asia in 2019 & 2022
- ❑ **Country case studies**
 - A review of T&CM research in Sri Lanka: 2015-2019” in 2020;
 - A systematic review on T&CM research against COVID-19 in India, 2021;
 - Implementation study on Integration of T&CM into health system for combating COVID-19 pandemic in India, 2021.
- ❑ Several **T&CM journals** shared with MSs regularly since 2015
- ❑ **A regional guideline on T&CM research methodologies** for the WHO South-East Asia is under development (2022-23)

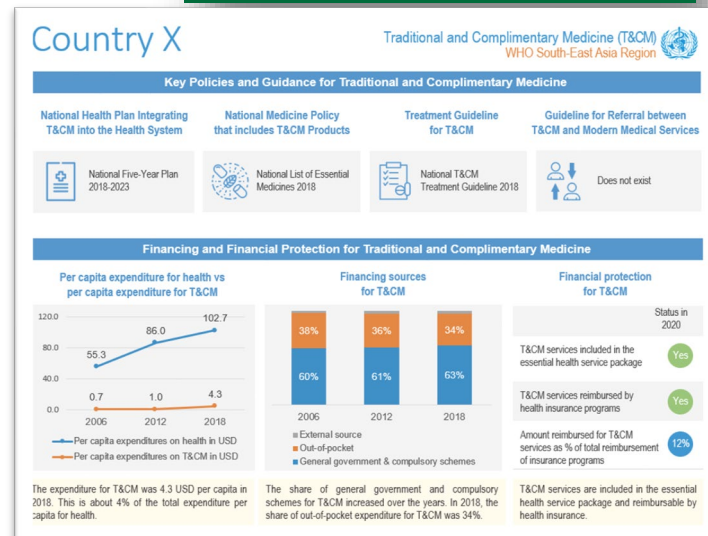
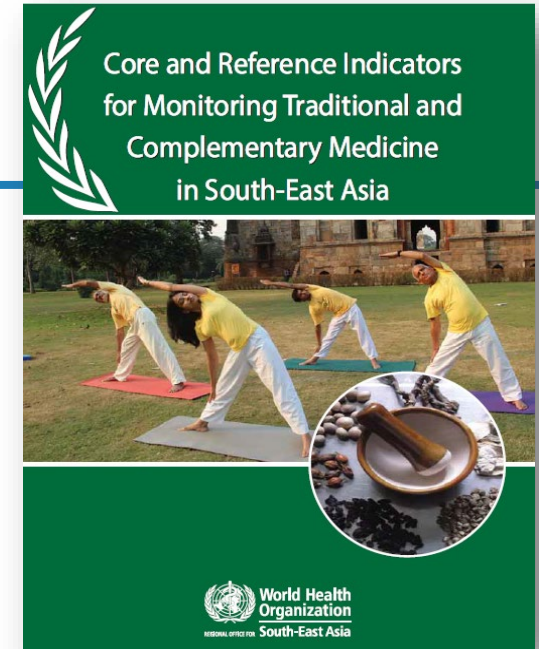
Regional workshop on clinical research methodologies in traditional medicine for the WHO South-East Asia Region

A review of
traditional medicine research
in Sri Lanka: 2015–2019



2. Monitoring and Evaluation system

- **Regional consultations on T&CM data in 2017 and 2021:**
 - Developed **M&E framework**;
 - **52 Indicators and metadata**;
 - **DHIS2-based T&CM data collection tool**;
 - **Country and regional dashboard**;
 - **Country data collection is in progress in 2022-23**



M&E Framework for T&CM

Traditional and Complementary Medicine (T&CM) Indicator Monitoring Framework for South-East Asia

System Determinants			Service Delivery	Health Objectives	
Structure and inputs			Outputs	Outcomes & Impact	
<p>Governance</p> <p>T&CM integration into the health system</p> <ul style="list-style-type: none"> ● T&CM reflected in the national health sector plan ○ Existence of a protocol or guidelines for referral between T&CM and modern medical services <p>Financing</p> <p>Funding and allocation</p> <ul style="list-style-type: none"> ● Total current expenditure (TCE) on T&CM (per capita) ○ Current expenditure on T&CM by general government and compulsory schemes (as % of TCE on T&CM) ○ Out-of-pocket payment for T&CM (as % of TCE on T&CM) ○ Externally sourced funding for T&CM (as % of TCE on T&CM) ● Total current expenditure on T&CM as % of total current health expenditure <p>Purchasing and payment systems</p> <ul style="list-style-type: none"> ● T&CM services included in the essential health service package ○ T&CM services reimbursed by health insurance programs ○ Amount reimbursed for T&CM services as % of total reimbursement of insurance program(s) <p>Health workforce</p> <p>T&CM health workforce density</p> <ul style="list-style-type: none"> ● Number and density of registered formally trained T&CM practitioners ○ Density of registered informal traditional healers <p>T&CM health workforce production</p> <ul style="list-style-type: none"> ○ Nr of T&CM graduates <p>Accreditation mechanism for T&CM education and training institutions</p> <ul style="list-style-type: none"> ● Existence of a national mechanism to ensure quality of T&CM education and training <p>Continuing professional development</p> <ul style="list-style-type: none"> ○ Existence of a continuing professional development programme for T&CM practitioners 	<p>Physical infrastructure</p> <p>T&CM facility density</p> <ul style="list-style-type: none"> ● Nr and density of health facilities offering T&CM <p>T&CM products</p> <p>Availability of T&CM products</p> <ul style="list-style-type: none"> ● Nr of T&CM products included in the national essential medicines list <p>Manufacturing of T&CM products</p> <ul style="list-style-type: none"> ● T&CM products are regulated by national medicines regulatory authorities ● Proportion of licensed T&CM manufacturers that meet good manufacturing practice standards ○ Nr of agricultural and collection practice guidelines for medicinal plants ○ Nr of monographs for herbal raw materials ○ Nr of T&CM products with a pharmacopoeia or monograph ○ Existence of a reference laboratory for testing of T&CM products <p>Advertising of T&CM products</p> <ul style="list-style-type: none"> ● Existence of a regulatory mechanism to oversee advertising and labelling of T&CM products <p>T&CM resource protection and promotion of sustainable use</p> <ul style="list-style-type: none"> ● Existence and continuing development of a mechanism and database to protect traditional knowledge and associated genetic resources ● Existence of conservation and cultivation programme to protect biodiversity and endangered species of medicinal plants and non-plants 	<p>Information and research</p> <p>T&CM indicator monitoring</p> <ul style="list-style-type: none"> ● Existence of a functional T&CM indicator reporting body ○ Nr of T&CM indicators incorporated into national health information system ○ Completeness of T&CM indicator reporting <p>T&CM safety monitoring</p> <ul style="list-style-type: none"> ● Existence of a national adverse event reporting system for T&CM products <p>T&CM research</p> <ul style="list-style-type: none"> ● Existence of a national body to oversee T&CM-related researches ○ Total government budget allocated for T&CM research ○ Incorporation of T&CM in the national health research strategy ○ Integration of T&CM in a national research council or national health council ○ Nr of research institutions or centres that conduct research on T&CM, including network universities ○ Nr of T&CM research results in the national research registry ○ Nr of peer-reviewed T&CM scientific publications in local and international journals 	<p>Processes</p> <p>Service delivery</p> <p>Improving quality</p> <ul style="list-style-type: none"> ● Existence of T&CM practice guidelines ● Supportive supervision: Percentage of health facilities offering T&CM that implement or receive supportive supervision <p>Integrated care</p> <ul style="list-style-type: none"> ● Nr of health facilities providing both T&CM and modern medicine services <p>Management of population health</p> <ul style="list-style-type: none"> ● Existence of a communication mechanism to provide public information related to T&CM 	<p>Accessibility and availability</p> <p>Accessibility of T&CM services</p> <ul style="list-style-type: none"> ● Percentage of population who report problems in accessing T&CM services when they have a healthcare need <p>Utilization of T&CM services</p> <ul style="list-style-type: none"> ● Nr of outpatient department visits for T&CM services per capita ○ T&CM outpatient department visits as a percentage of all outpatient department visits ○ Hospital discharge rate for T&CM services ● Top 10 health problems as reasons for seeking T&CM services <p>Quality and safety</p> <p>T&CM adverse events reported</p> <ul style="list-style-type: none"> ● Nr of reported T&CM-related adverse events for T&CM products <p>Continuity of care</p> <ul style="list-style-type: none"> ○ Percentage of patients who report having a regular T&CM provider <p>People-centered care</p> <ul style="list-style-type: none"> ● Shared decision-making: Percentage of patients who report being involved in decisions about their T&CM care and treatment 	<p>Service coverage</p> <ul style="list-style-type: none"> ● Percentage of population that use T&CM services ○ Percentage of population with demand for T&CM services satisfied <p>Patient satisfaction</p> <ul style="list-style-type: none"> ● Percentage of patients satisfied with T&CM services and outcomes
				<p>52 Indicators</p> <ul style="list-style-type: none"> ● 27 Core indicators ○ 25 Reference indicators 	

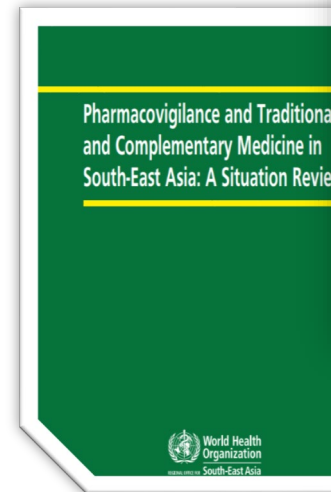


World Health Organization

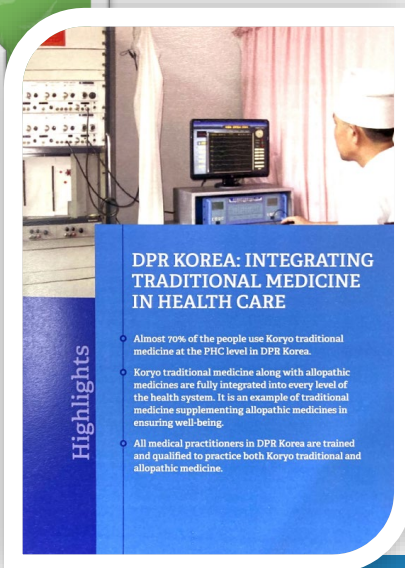
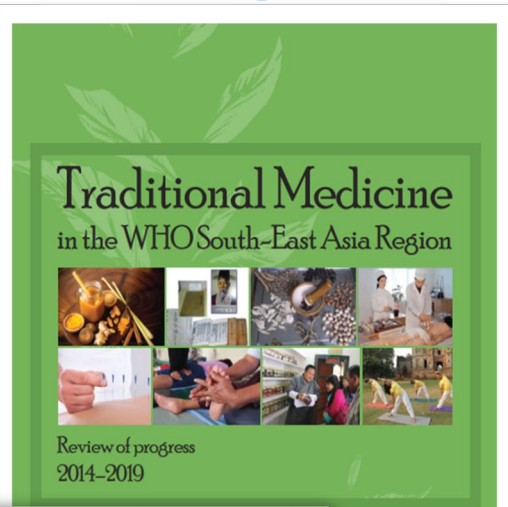
World Health Organization
Regional Office for South-East Asia

3. Safety & Quality monitoring for T&CM products

- A **briefing note** on Pharmacovigilance (PV) for T&CM products in 2017
- **In-depth country** reviews on PV in 2018
- Regional **baseline survey** on PV in 2019
- Regional **workshop** on PV in 2020
- Regional **ToT training** on PV in 2021
- **A regional hands-on training** on Lab-based Quality Control methods for T&CM products & **Informal expert group communication** in 2022
- South-East Asia Regulatory Network (**SEARN**) established in 2016 discussed on T&CM regulatory issues;
- Five countries in **IRCH**
- Four MSs with **PV for T&CM** products



4. Integration



- ❑ **2015: Regional workshop** to share experience and evidence on appropriate integration of TM into national health-care systems.
- ❑ Several **study tours** program organized in 2016, 2017 and 2018 for several countries
- ❑ **2020: Regional publication “Traditional Medicine in the WHO South-East Asia Region: Review of progress 2014-2019”** after country in-depth review
 - Country profile
 - Regional achievement
 - Country achievement including good and best practices in different aspects of T&CM
- ❑ **2022: Country success story** on integration in DPR Korea documented in a regional publication

Challenges and opportunity

- **Challenges:** Despite steady progress in areas of T&CM, particularly in implementing the global strategy, Member States in the WHO South-East Asia region as like other regions still face key challenges such as ***lack of research evidence & data, financial support, & mechanisms to monitor and regulate T&CM practice, products and practitioners***, as well as ***policy guidance on integration*** of T&CM into health system.
- **Opportunity:** The new setting-up of the ***WHO GCTM*** possesses the historical moment and strategic opportunities for the development of T&CM, particularly in catalyzing traditional healing knowledge and advanced science and technologies toward promoting evidence-based T&CM practices to improve health and wellbeing of the population and to strengthen health system.



Experience, and lesson learned

- Develop T&CM in **health system approach**;
- Find **appropriate way** to research, validate, and generate evidence and data on T&CM intervention;
- Establish **minimum quality and safety standard on T&CM products**, given the global use of T&CM products;
- Identify, document and disseminate **good and best practices** in different aspects of T&CM including integration, regulation, M&E system, research evidences and innovation among Member States;
- Provide **common platform** for sharing experiences in regulating, researching and integrating T&CM into healthcare delivery system;
- Continue to provide **capacity building program** on different technical aspects of T&CM as per the countries' demand.



Thank you!



**World Health
Organization**