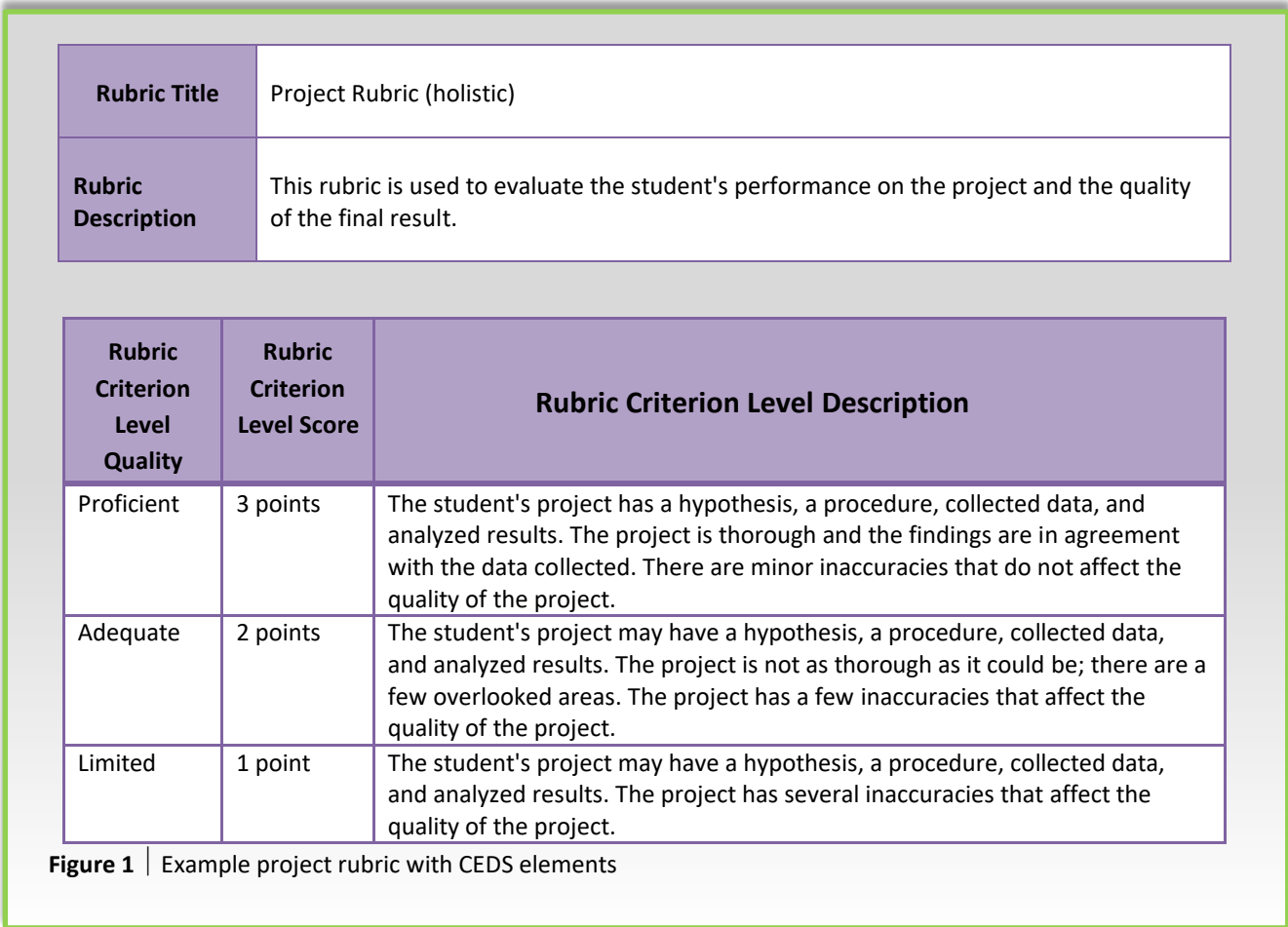


CEDS includes a common data vocabulary for defining rubrics in a data system. The CEDS elements support digital representations of both holistic and analytic rubrics.

Scope

Consider the following examples:



Rubric Title	Project Rubric (analytic)
Rubric Description	This rubric is used to evaluate the student's performance on the project and the quality of the final result.

Criteria	Weight	Levels			
		4 Points	3 Points	2 Points	1 Point
Has a plan for Investigation The student turns in a written plan for investigation.	1	The plan is thorough	The plan is a few details	details	limited
Use of Materials The student manages materials responsibly.	.5	Manages all materials responsibly	Uses the materials responsibly most of the time	Mishandles some of the materials	Does not use materials properly
Collects the Data The student collects a sufficient number of data points to support the investigation and accurately records the data points.			data	Major portions of the data are missing	The data collection consists of a few points

Figure 2 | Example project rubric with CEDS elements

Connections

The following CEDS Connections are available:

Connection	URL
Rubric Elements in CEDS	https://ceds.ed.gov/connectReport.aspx?uid=503

(Other Connections may be developed from time to time. Please visit <http://ceds.ed.gov> for more information.)

Logical Model

CEDS provides a logical model showing the relationships between data elements as they might exist in an operational data store (a database designed to integrate data from multiple sources for additional operations on the data). The reference model shows both the definition of a rubric and use of a rubric for scoring an assessment item:

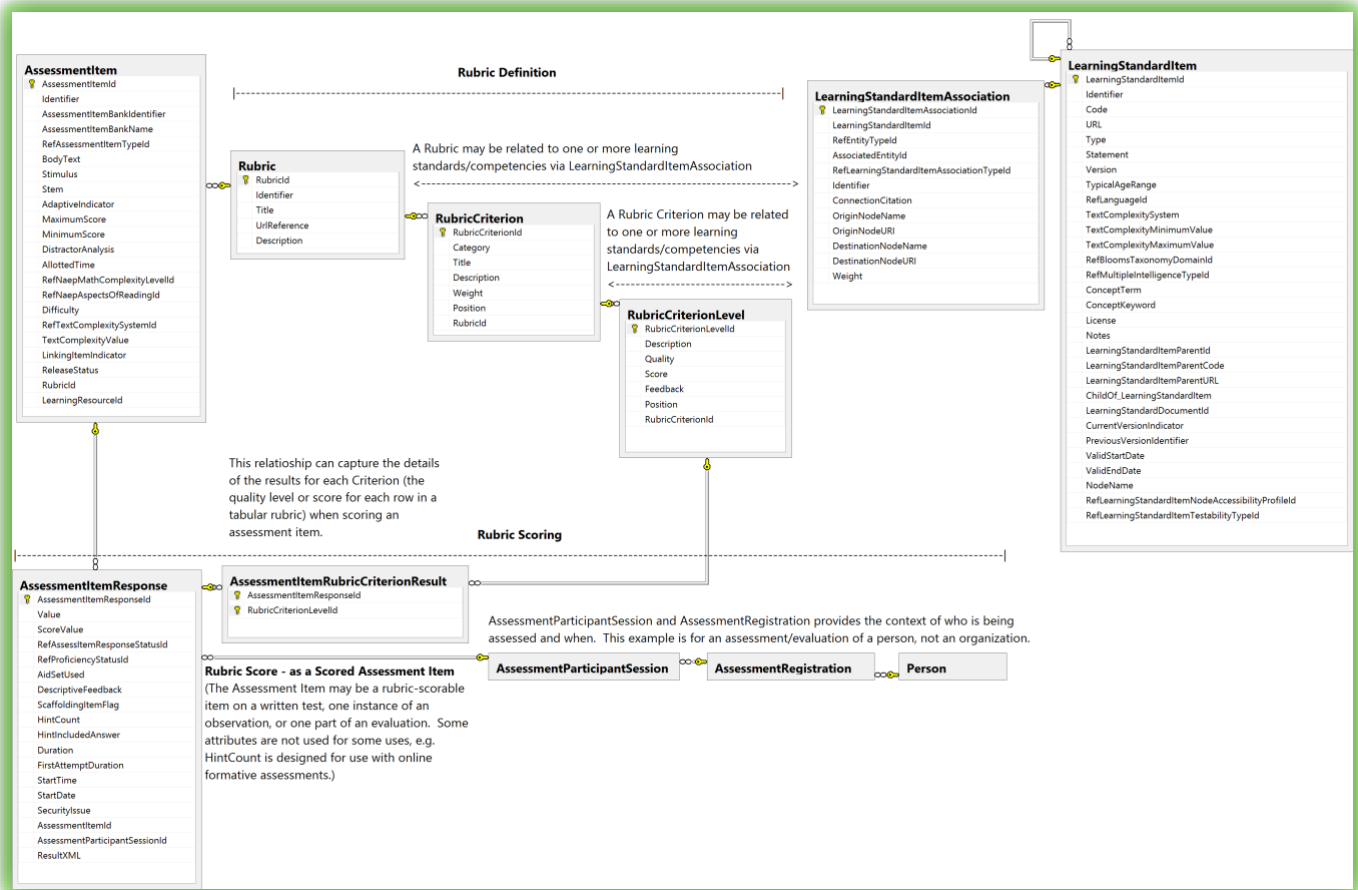


Figure 3 | Rubrics Data Model

References

1. Model informed by *An Ontology for Open Rubric Exchange on the Web*, Brian Panuilla, Megan Kohler (cc)
2. Examples adapted from <http://www2.gsu.edu/~mstnrhx/457/rubric.htm>