

# ExpressVote<sup>®</sup> Universal Voting System

EVS 6.1.0.0

Firmware 4.0.0.0 (Ballot Marking Device)

*Poll Worker Guide*



All rights reserved. Printed in the USA

This document, as well as the product described in it, is furnished under license and may be used or copied only in accordance with the terms of such license. The content of this document is furnished for informational use only, is subject to change without notice, and should not be construed as a commitment by Election Systems & Software, Inc. Election Systems & Software, Inc., assumes no responsibility or liability for any errors or inaccuracies that may appear in this document. Except as permitted by such license, no part of this publication may be reproduced, stored in a retrieval system, or transmitted, in any form or by any means, electronic, mechanical, recording, or otherwise, without the prior written permission of Election Systems & Software, Inc.

## Disclaimer

Election Systems & Software does not extend any warranties by this document. All product information and material disclosure contained in this document is furnished subject to the terms and conditions of a purchase or lease agreement. The only warranties made by Election Systems & Software are contained in such agreements. You should ensure that the use of this equipment complies with all legal or other obligations of their governmental jurisdictions.

All products described in this document are registered trademarks of Election Systems & Software Inc. All other products mentioned are the sole property of their respective manufacturers.

## Proprietary Information

ES&S has identified and appropriately marked relevant portions of this document, which it considers confidential and proprietary. We request confidential treatment by the EAC of such information and would expect that such information is exempt from required disclosure. In the event a third-party requests disclosure of information which ES&S considers confidential and proprietary, we would ask that the EAC notify ES&S of such requested disclosure in order to provide us with an opportunity to seek exemption from disclosure.

The document sections referenced below contain Election Systems and Software, Inc. (ES&S) confidential information, which is provided for the sole purpose of permitting the recipient, to evaluate the ES&S Voting System submitted herewith. The following sections are designated as "Proprietary and Confidential" by Election Systems & Software.

# Table of Contents

<b>ExpressVote Universal Voting System</b> .....	<b>5</b>
<b>Administrator Learning Plan</b> .....	<b>5</b>
Learning Objectives .....	5
Agenda.....	5
Product Overview & ExpressVote Components .....	6
Access Compartment Components .....	7
<b>Preparing the ExpressVote for Use</b> .....	<b>8</b>
Powering Up the ExpressVote .....	8
Clearing and Initializing .....	8
Installing the Election Definition .....	8
<b>ExpressVote Administrative Tasks</b> .....	<b>9</b>
ExpressVote Supervisor Menu .....	9
Calibrating the Touch Screen.....	9
ExpressVote Reports.....	9
<b>ExpressVote Advanced Settings</b> .....	<b>10</b>
Accessing Advanced Settings.....	10
Changing the Time Zone .....	10
Changing the Date & Time .....	10
<b>Voting Session Initiation and Controls</b> .....	<b>11</b>
Initiating a Vote Session .....	11
Touch Screen Controls .....	11
Audio-Tactile Keypad Controls.....	11
<b>Voting on the ExpressVote</b> .....	<b>12</b>
Vote Using Touch Screen .....	12
Vote Using Audio-Tactile Keypad.....	12
Editing Vote Selections & Printing a Ballot.....	12
<b>Powering Down the ExpressVote</b> .....	<b>13</b>
Powering Down & Storing the ExpressVote .....	13
<b>Appendix A: Troubleshooting</b> .....	<b>14</b>
Jammed Ballot Card.....	14
Screen Calibration Issues.....	14
Election Definition Not Found .....	14
Idle Error Message .....	15
ExpressVote Not Accepting Ballot Card .....	15
Protecting Privacy While Assisting Voters.....	15
Scanner Calibration Issues.....	16
Contacting Technical Support .....	16
<b>Appendix B: Accessible Voting Options</b> .....	<b>17</b>
Voting with the Rocker Switch Device.....	17
Voting with the Sip & Puff Device.....	17
<b>Appendix C: ExpressVote Rolling Kiosk</b> .....	<b>18</b>
Moving the Kiosk & .....	18
Raising the Enclosure .....	18
Tilting the Kiosk & Deploying the Privacy Panels.....	18
Daisy Chaining Multiple Kiosks .....	18

THIS PAGE HAS BEEN LEFT INTENTIONALLY BLANK

# ExpressVote® Universal Voting System Poll Worker Learning Plan

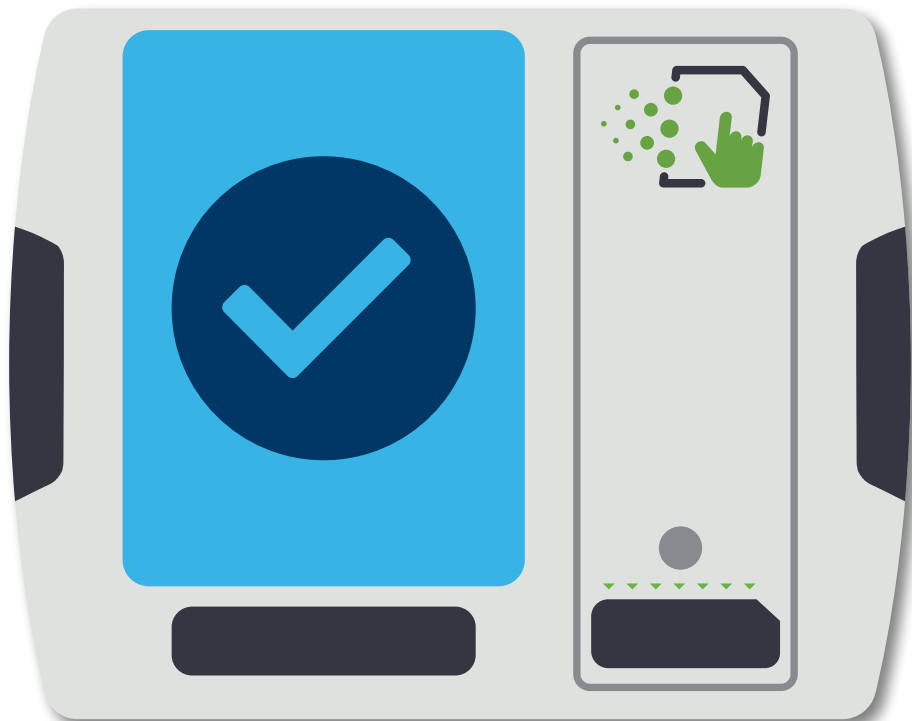
## Learning Objectives

This course will provide you with the skills to successfully use the ExpressVote Universal Voting System in your jurisdiction. Upon completion of this course, you will be able to:

- Set up the ExpressVote
- Assist voters in using the ExpressVote
- Power down & store the ExpressVote
- Troubleshoot the ExpressVote

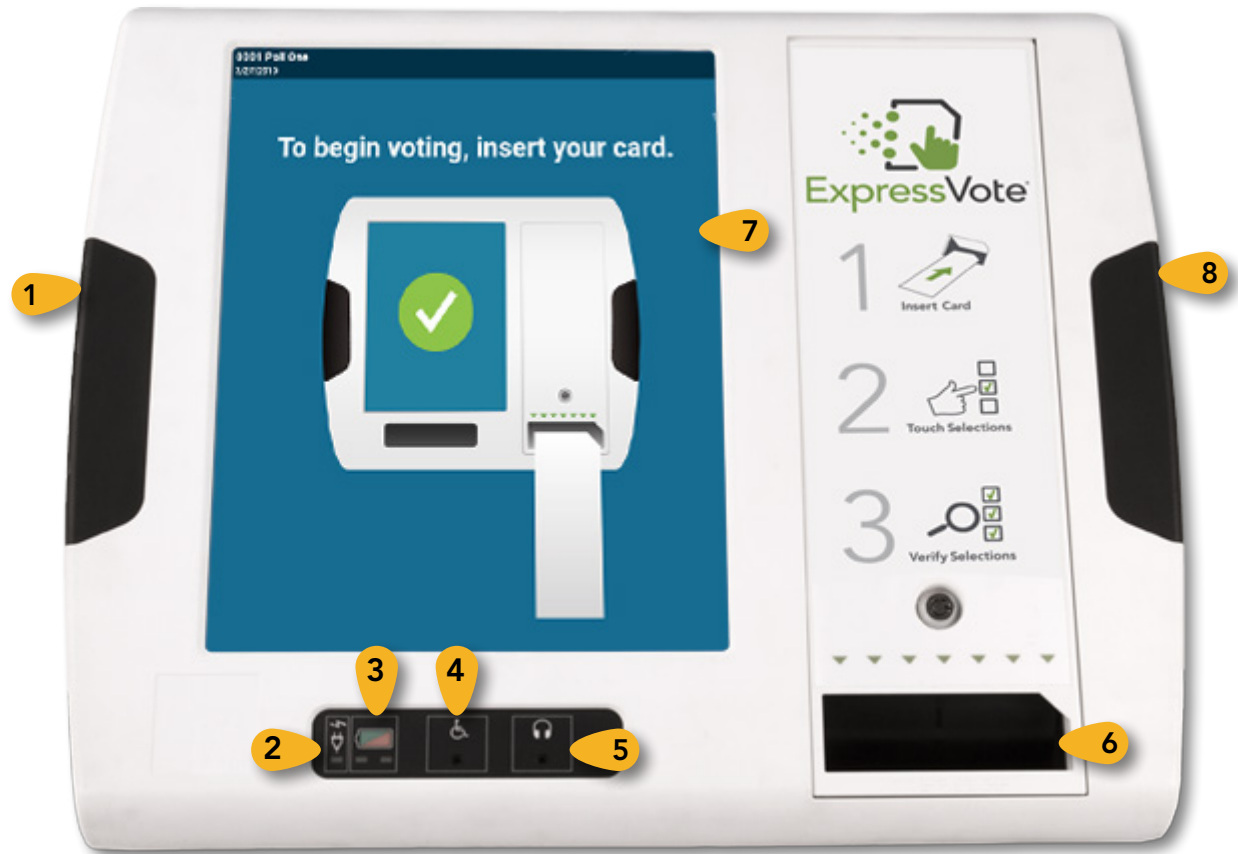
## Agenda

- **Understanding the ExpressVote**
- **Setting Up the ExpressVote**
- **Using the ExpressVote for Voting**
- **Troubleshooting the ExpressVote**
- **Applying what you have learned**



# ExpressVote<sup>®</sup> Universal Voting System

## Product Overview & ExpressVote Components

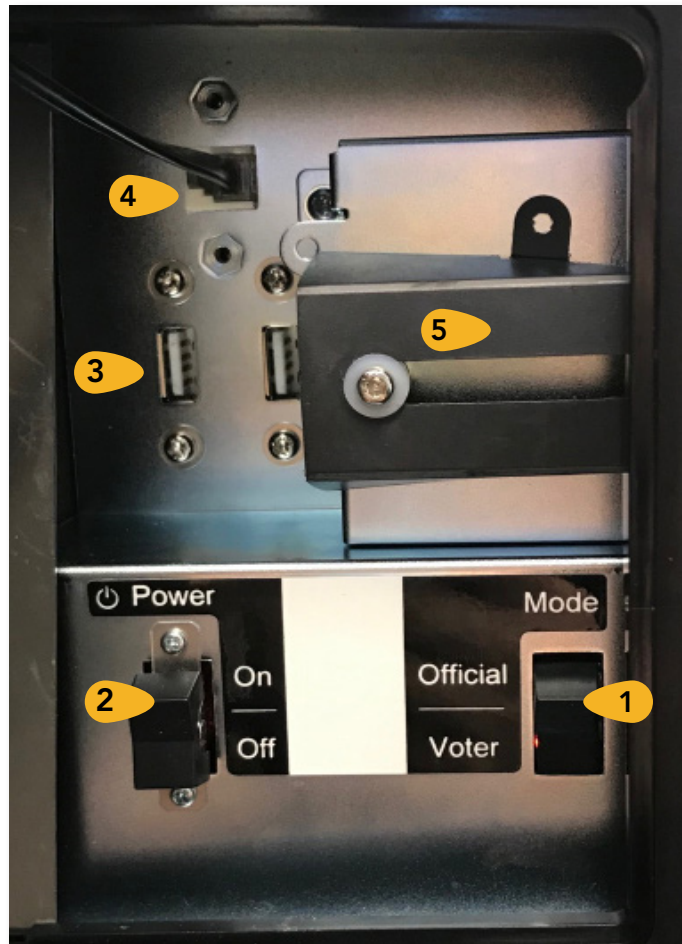


The ExpressVote Universal Voting System as a Ballot Marking Device is designed to capture and mark voting cards for all voters. The ExpressVote concept reduces voting time, enhances the voting experience, and provides voting access for those who require it.

### ExpressVote Components

- |                             |                                 |
|-----------------------------|---------------------------------|
| 1 Access compartment        | 5 Headphone jack                |
| 2 Power source indicator    | 6 Paper ballot feed             |
| 3 Battery status indicator  | 7 Touch screen                  |
| 4 Accessibility device port | 8 Paper Path Access Compartment |

## Access Compartment Components



1 Mode switch

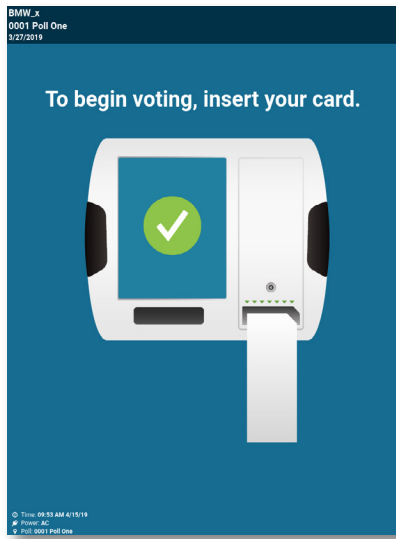
4 Audio-tactile keypad jack

2 Power switch

5 Sliding protective USB port cover

3 USB ports

# Vote Session Initiation and Controls



## Initiating a Vote Session

Turn the Mode Switch to **Voter**. Insert an unmarked ExpressVote card into the Activation Card Slot. If multiple languages are available, select the appropriate language.

On the Precinct Search screen, touch **Search** to view a list of all available precincts. Touch the correct precinct. Once selections are made, touch **Activate** to initiate the voting session.

If using a pre-printed activation card, scan the barcode using the QR scanner on the front of the kiosk. The correct ballot will display for the voter.

More information: *ExpressVote Operator's Guide*, p. 132

Button	Description
<b>Text Size</b>	Allows voter to choose large or small text size.
<b>Contrast</b>	Changes display to white text on black background.
<b>Language</b>	Enables the voter to select a preferred language.
<b>Help</b>	Enables the voter to display the Help screen.
<b>Quit</b>	Enables a poll worker to quit the voting session.
<b>Previous</b>	Returns to the previous screen.
<b>Next</b>	Enters selection and opens the next screen.

## Touch Screen Controls

When using the touch screen to complete a vote session, voters can use both the Title Bar (top of screen) and the Navigation Bar (bottom of screen).

The Title Bar contains buttons allowing voters to adjust the appearance of the screen, including the text size and contrast.

The Navigation Bar contains the controls to move between different screens of the ballot.

Refer to the table on the left for complete descriptions of each touch screen control.

More information: *ExpressVote Operator's Guide*, p. 41



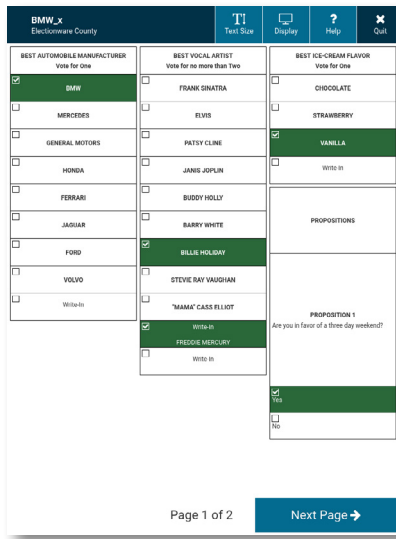
## Audio-Tactile Keypad Controls

Button	Description
<b>Up Arrow</b>	Moves the cursor up the screen menu.
<b>Back Arrow</b>	Moves to the previous screen.
<b>Select</b>	Selects the voter's contest choices.
<b>Forward Arrow</b>	Advances to next screen.
<b>Down Arrow</b>	Opens screen with voting instructions.
<b>Home</b>	Opens screen with voting instructions.
<b>Pause</b>	Stops the audio message momentarily.
<b>Screen</b>	Darkens the monitor for privacy viewing.
<b>Repeat</b>	Repeats the last spoken phrase of audio.
<b>Tempo</b>	Adjusts the audio speed.
<b>Volume</b>	Adjusts the audio level.

More information: *ExpressVote Operator's Guide*, p. 60



# Voting on the ExpressVote



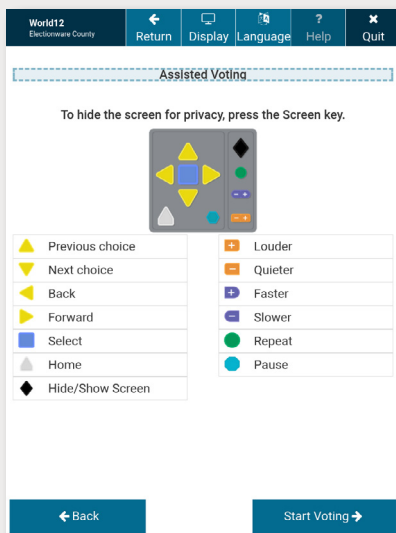
## Vote Using Touch Screen

On the voting screens, touch the candidate or other contest choice to select. If there are more candidates than will fit on the screen, press the yellow **More** bar at the bottom of the screen to see remaining candidates.

To navigate between contests, touch the **Next** or **Previous** buttons in the Navigation Bar.

For contests allowing write-in votes, touch the **Write-in** option and use the on-screen keyboard to enter your write-in name. Touch **Accept**.

*More information: ExpressVote Operator's Guide, p. 144*



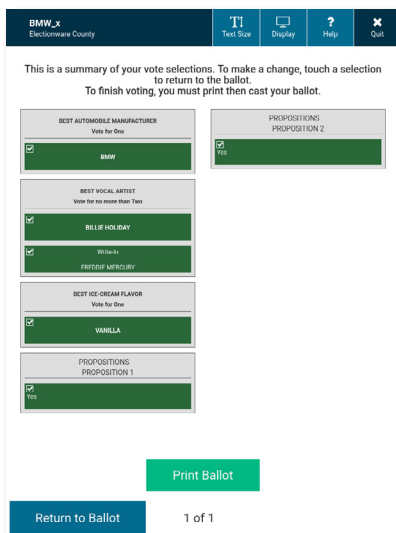
## Vote Using Audio-Tactile Keypad

If you are using the ExpressVote for an accessible voting session, make sure the headphones are plugged into the Headphone Jack.

Use the controls on the Audio-Tactile Keypad to navigate the ballot, as instructed on page 15.

For contests allowing write-in votes, the letters will be read in alphabetical order on the ballot audio as you select letters for your write-in.

*More information: ExpressVote Operator's Guide, p. 61  
For instructions on using the rocker switch or sip-and-puff devices, please see Appendix B.*



## Editing Vote Selections & Printing a Ballot

Once all selections have been entered, the Verify Selections screen will display a summary of your ballot selections.

If needed, touch the contest for which you wish to make changes. Make the desired changes, and return to the Verify Selections screen.

When done verifying selections, the Print Card screen displays. Touch **Print Ballot** to print the completed ballot onto the activation card.

*More information: ExpressVote Operator's Guide, p. 149*

# Powering Down the ExpressVote



## Powering Down & Storing the ExpressVote

Using the barrel key, open the Access Compartment and set the Power Switch to **Off**. Remove the Election Definition media. Lock the Access Compartment door and remove the key.

Ensure all doors on the machine are locked.

Unplug the headphones and power cord from the ExpressVote system. Store according to the jurisdictional instructions.

*More information: ExpressVote Operator's Guide, p. 28*



# ExpressVote

# Appendix A: Troubleshooting

## Jammed Ballot Card

**PROBLEM:** The card is jammed inside the ExpressVote™ equipment.

**CAUSE:** Although causes vary, the more typical reasons for card jams are:

- The card was inserted incorrectly, or
- The ExpressVote rollers are not functioning properly.

**SOLUTION:** Open the security compartment on the left side of the machine. Change the Mode Switch to **OFFICIAL**. Once the Supervisor Menu appears, press the **EJECT CARD** button.

If the card does not eject, open the security panel on the right side of the machine. Locate the card and gently pull the card out of the machine. Remove the card jam being careful to not rip the paper. Close and re-lock the security panel. Follow your jurisdictions procedures for spoiling and issuing a new card if necessary.

## Screen Calibration Issues

**PROBLEM:** The voter pushes the oval for one candidate and another candidate is selected.

**CAUSE:** This could be caused by a dirty touch screen, or the alignment of the touch screen is not adjusted correctly.

**SOLUTION:** Put isopropyl alcohol on a soft cloth and wipe clean.

**WARNING:** Do not use products containing ammonia, such as Windex. This can cause the screen to become deteriorated over time. Use only isopropyl alcohol for cleaning the touch screen and scanner.

If the screen calibration issue is not due to a dirty screen, contact an election official.

## Idle Error Message

**PROBLEM:** After several minutes, the following message appears on the ExpressVote screen:

*"Continue Voting? There has been no activity for five minutes.*

*Next Step: To continue voting, touch 'Previous'. To receive your card without printed selections, touch 'Exit'."*

**CAUSE:** This error message appears after the ExpressVote has been idle, with a card inserted for 5 minutes.

**SOLUTION:** If a voter is still using the ExpressVote, the poll worker will need to open the left security compartment and switch the Mode to **Official**. The card can be returned to the voter and be reinserted. Reinsert the card or follow your jurisdiction's spoiling procedures and issue a new card. If the voter has left the polling place, follow the steps above to retrieve the card and follow the spoil procedures.

**NOTE:** The option to go back to previous screen in Voter mode only exists after 5 minutes of inactivity. If the terminal is inactive for another 5 minutes, you will need to go to Official mode and eject the card from the Main Menu.

# Appendix A: Troubleshooting (continued)

## Protecting Privacy While Assisting Voters

**PROBLEM:** As a poll worker I don't want to invade the voters privacy when answering their questions.

**SOLUTION:** The ExpressVote Keypad is equipped with a privacy key which will turn the screen black when viewing. The diamond shaped key at the top-right of the keypad allows the screen to be not viewable.

If the Keypad is connected, this will preserve the privacy for the voters who are using only the audio feature to select their votes or for voters who request assistance from a poll worker. Poll workers can easily access the button when approaching the ExpressVote™ from behind as long as the keypad is connected.

Make sure you tell the voter who is using a visual card to press the button again to resume the card on the screen.

## Contacting Technical Support

If you need assistance, ES&S technical support staff can provide advice and help you resolve the situation. Support representatives are available Monday through Friday, between 7:00 a.m. and 7:00 p.m. Central Time.

**Phone:** 1-877-ESS-VOTE (1-877-377-8683), Option 4

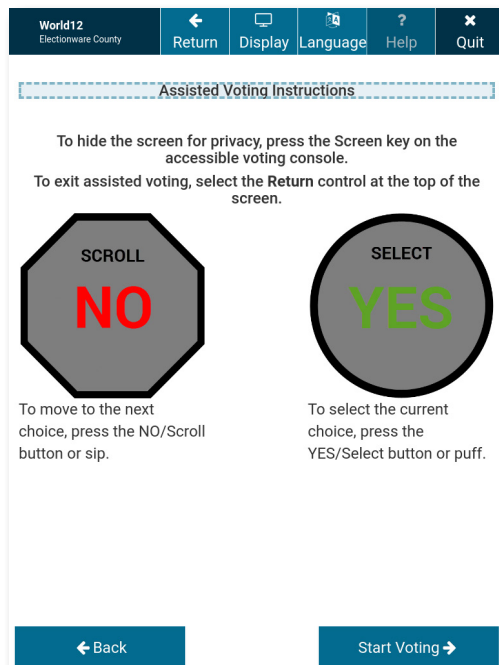
**E-mail:** [technicalsupport@essvote.com](mailto:technicalsupport@essvote.com)

When you contact ES&S for technical support, have the equipment on hand and be prepared to provide the following information to the support representative:

- Model number of the product you are using
- Firmware version of the product
- Exact wording of any messages that appeared
- Description of what was happening when the problem occurred

# Appendix B: Accessible Voting Options

## Voting with the Rocker Switch Device



The rocker switch is a large-button, two-position switch assistive technology that can assist voter's who are unable to use the ExpressVote touch screen or the audio-tactile keypad. The rocker switch device can be hand-held, placed on a table, or placed on the floor for foot operation.

Voters can use **Scroll/NO** and **Select/YES** buttons to navigate on-screen ballot contests and select their voting choices. The rocker switch buttons feature both visible text and embossed Braille identification labels. The voter can use the following rocker switch controls to conduct the voting session.

To vote using the rocker switch, press the **NO** switch to sequentially scroll through the on-screen elements in a clockwise direction.

If the voter scrolls past the desired selection, press **NO** to scroll through all subsequent clockwise selections to return to the desired voting choice.

Press the **YES** switch to highlight the desired on-screen element. When the desired element is highlighted, press **YES** again to select the choice.

More information: *ExpressVote Operator's Guide*, p. 67

## Voting with the Sip & Puff Device



Sip-and-puff refers to the assistive technology device commonly used by individuals with motor disabilities or limited dexterity. Voters use a mouthpiece to navigate on-screen ballot contests with inhalations (sips) and make their selections with exhalations (puffs).

The air tube is attached to a small switch box connected to the ExpressVote's auxiliary panel. The switch box converts sips and puffs into electrical signals that correspond to selection and navigation commands.

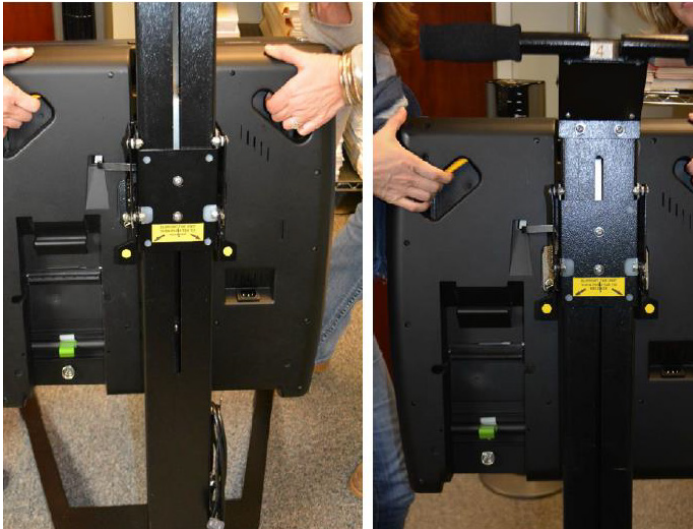
The voter should **sip** to sequentially scroll through the on-screen elements in a clockwise direction.

Each sip highlights the next on-screen element. If the voter scrolls past the desired selection, the voter should **sip** through all subsequent clockwise selections to return to the desired voting choice.

The voter should **puff** to select the desired on-screen element.

More information: *ExpressVote Operator's Guide*, p. 69

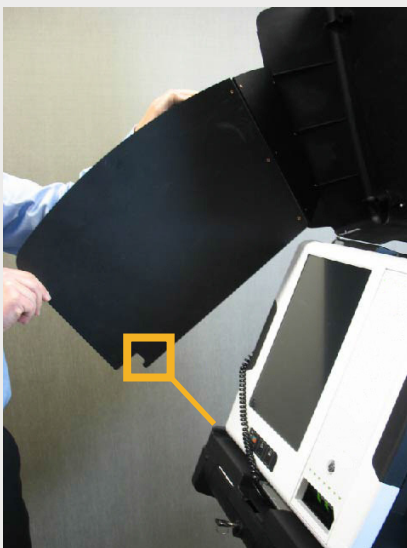
# Appendix C: ExpressVote Rolling Kiosk



## Moving the Kiosk & Raising the Enclosure

To move the rolling kiosk, place one foot on the kiosk base, grasp the handles on the back of the enclosure, and tilt it backwards onto its wheels.

Raise enclosure from base of the kiosk by pressing in on the yellow handle and pulling upward. Pull the enclosure up until it locks to the desired height.



## Tilting the Kiosk & Deploying the Privacy Panels

To tilt, pull the bottom of the enclosure out and up to the desired angle. To lower, use the tabs on back of the support column to release the support pins.

To deploy the privacy panels, release the panels from pins. Insert each panel tab into its corresponding track.

**It is important to place the panel tabs into the slot on each side.** Resting the panels on the kiosk alone does not lock them into place and could cause the enclosure to fall on a Voter.



## Daisy Chaining Multiple Kiosks

With the kiosk configuration, AC power from one terminal can come from a central outlet on a neighboring ExpressVote kiosk. Up to seven ExpressVote kiosks can be connected to the same power source.

In the daisy chain configuration, the first unit is plugged into the wall AC outlet. Each of the subsequent units connects via the AC outlet on the previous rolling kiosk.

THIS PAGE HAS BEEN LEFT INTENTIONALLY BLANK

