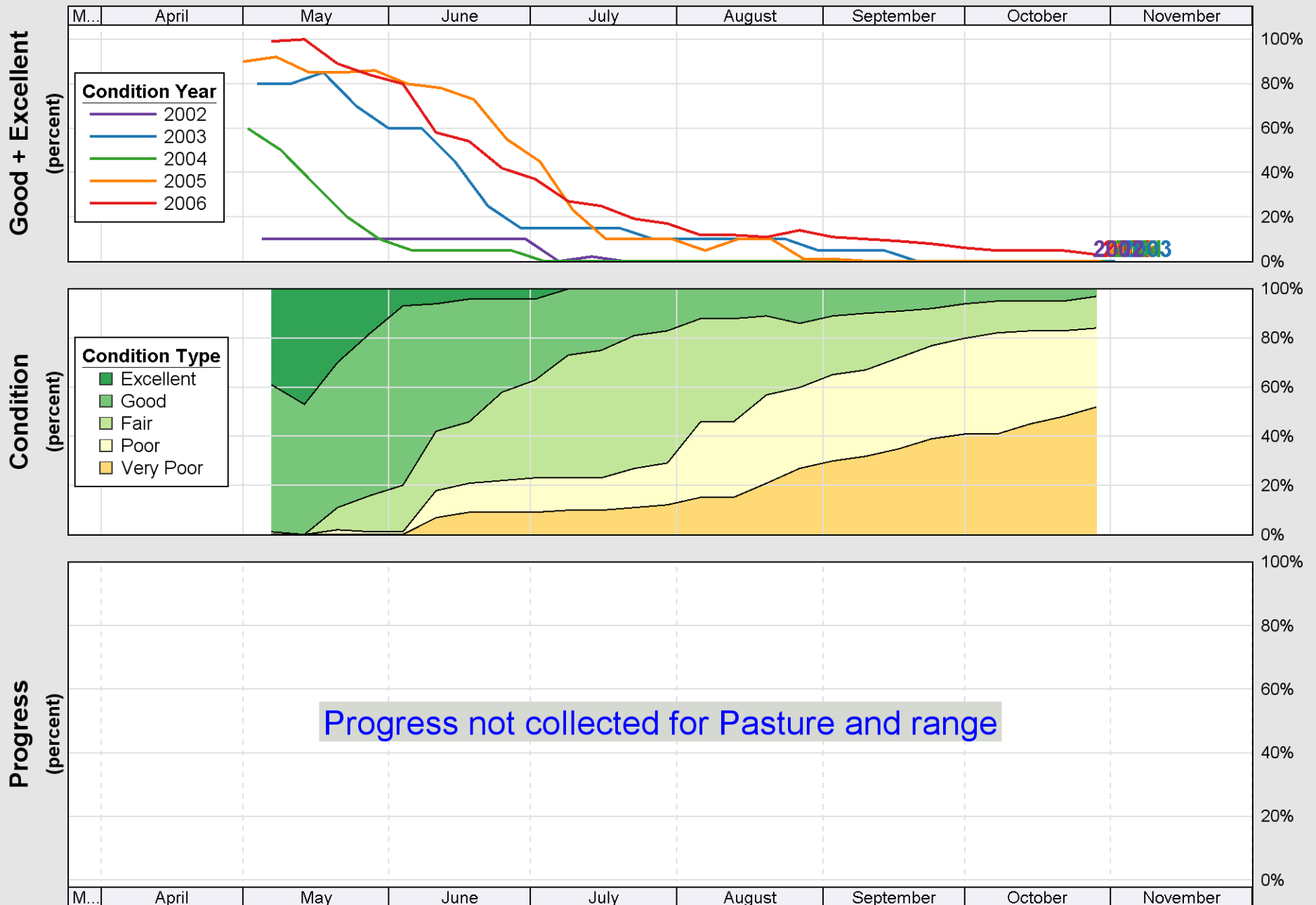
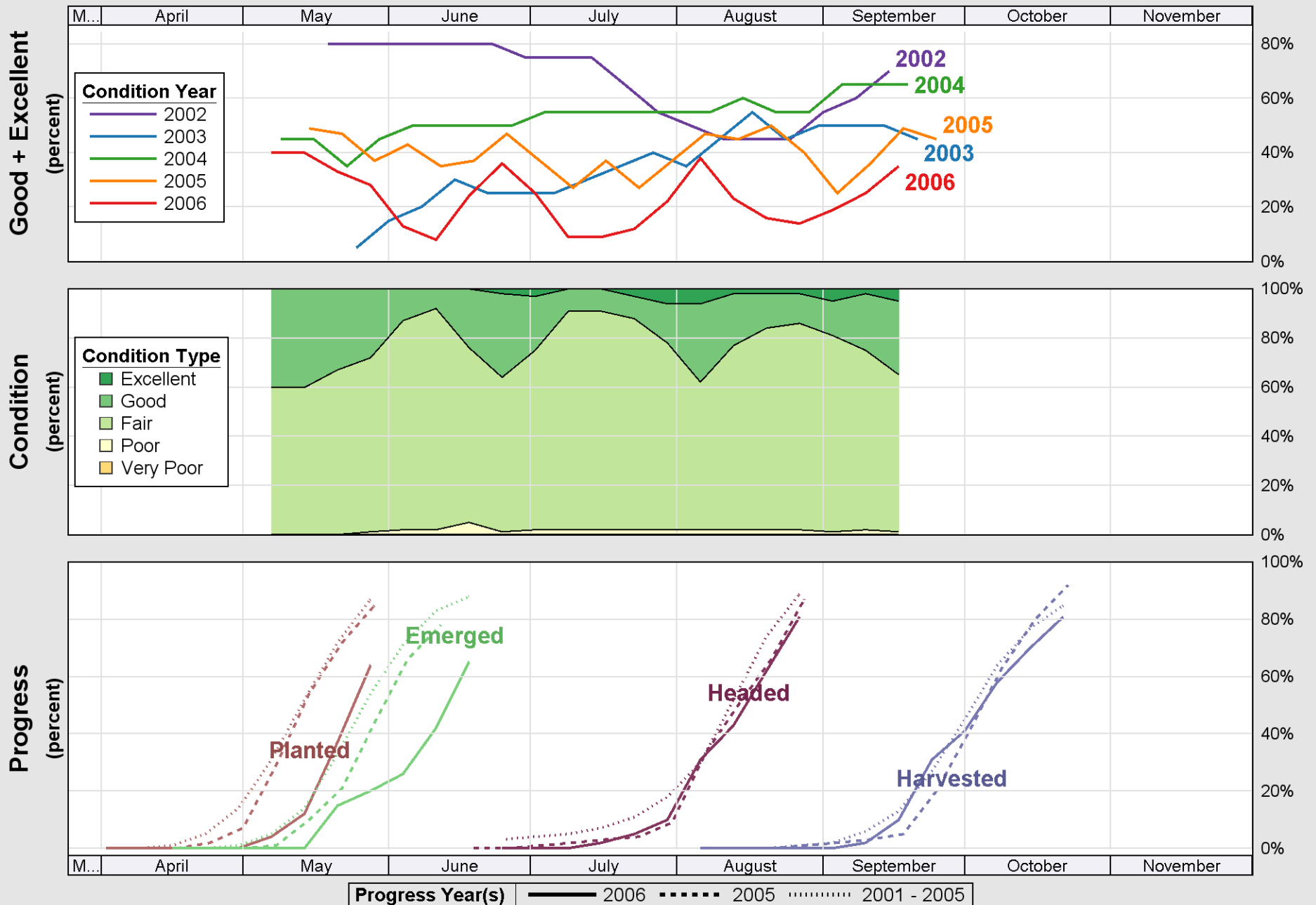


Source: National Agricultural Statistics Service (NASS), Crop Progress Report

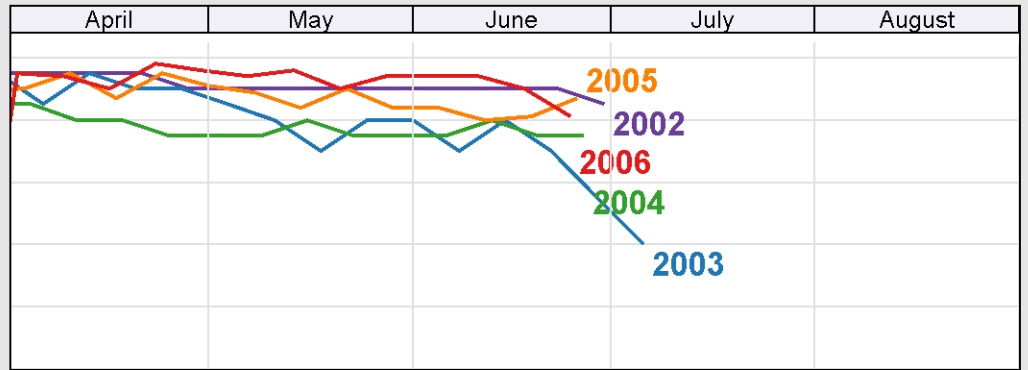
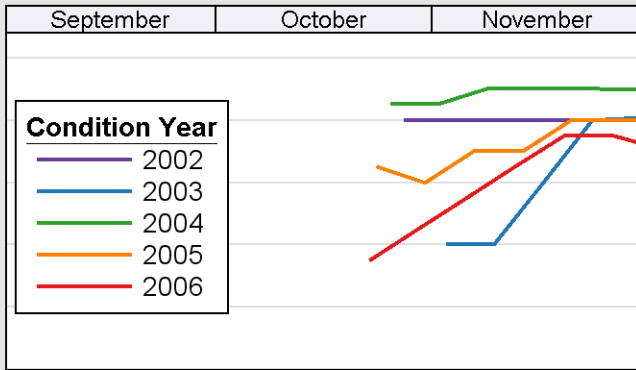


Source: National Agricultural Statistics Service (NASS), Crop Progress Report

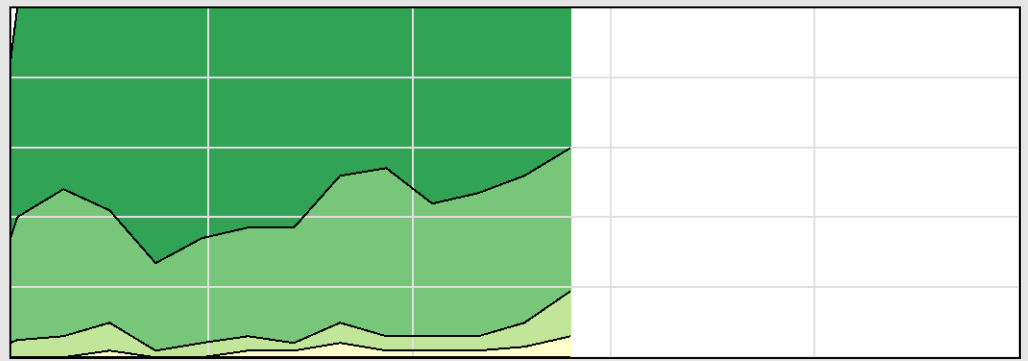
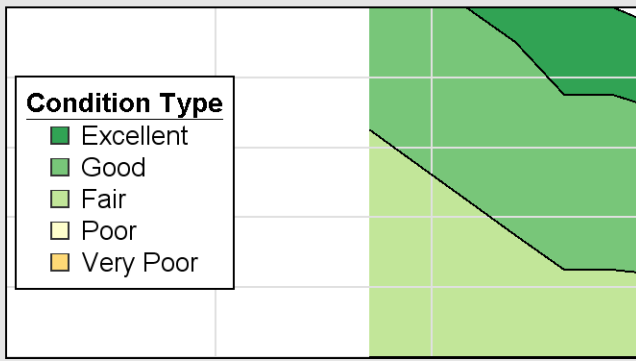


Source: National Agricultural Statistics Service (NASS), Crop Progress Report

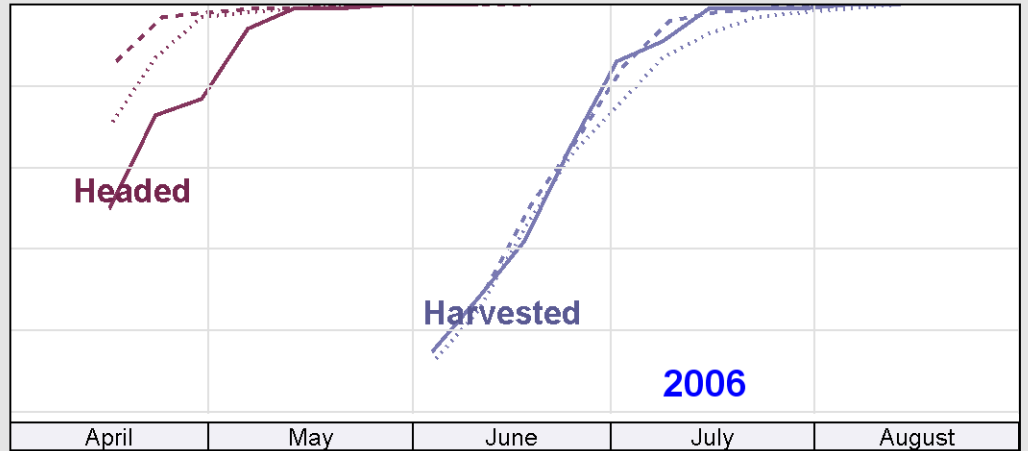
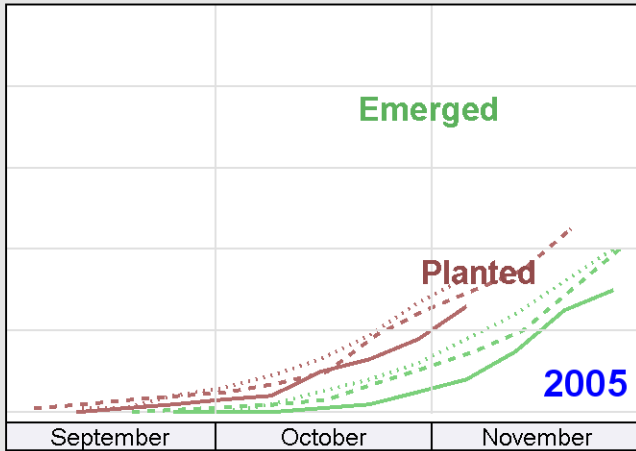
Good + Excellent  
(percent)



Condition  
(percent)



Progress  
(percent)



Progress Year(s) ——— 2006    ····· 2005    ······ 2001 - 2005