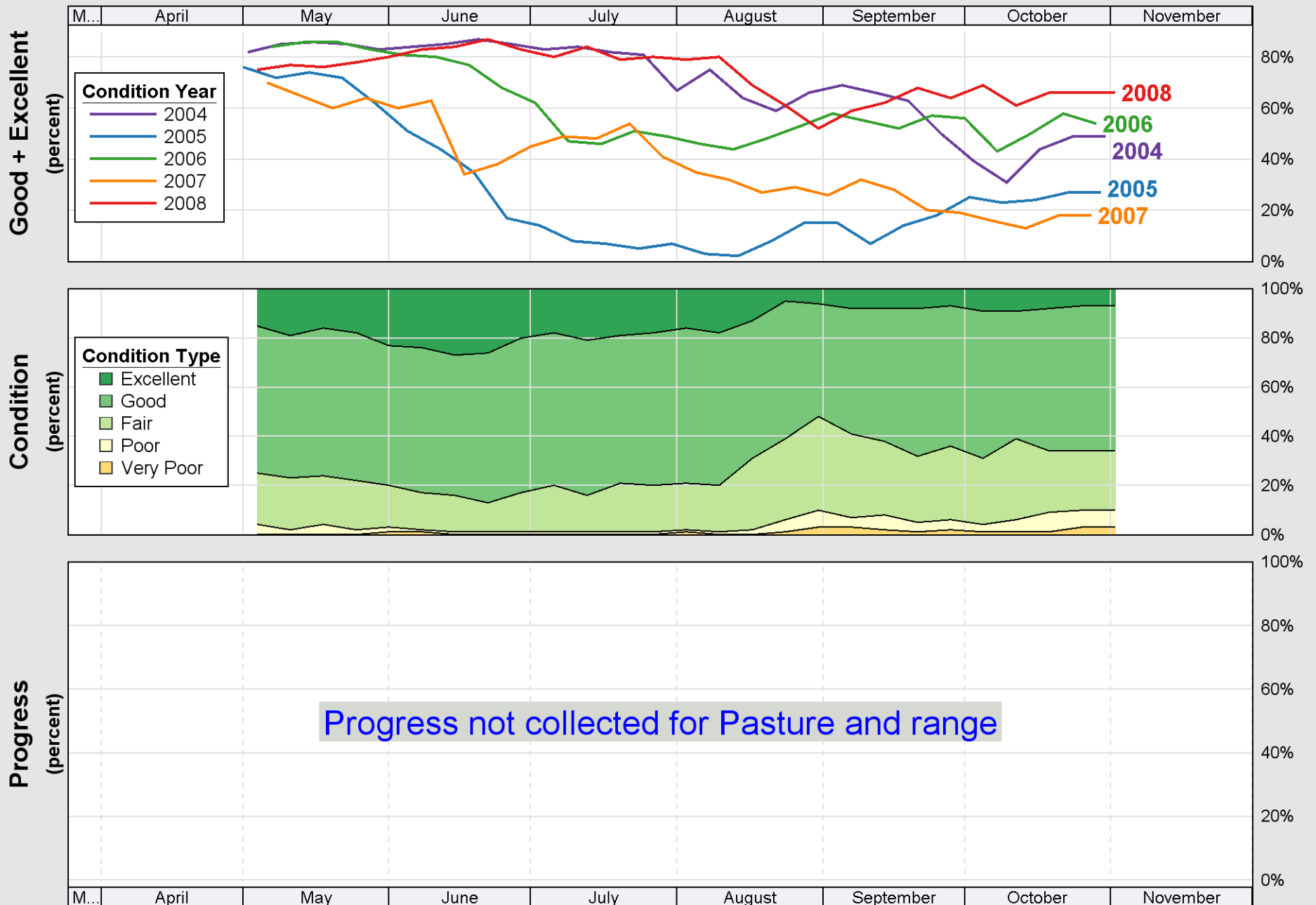
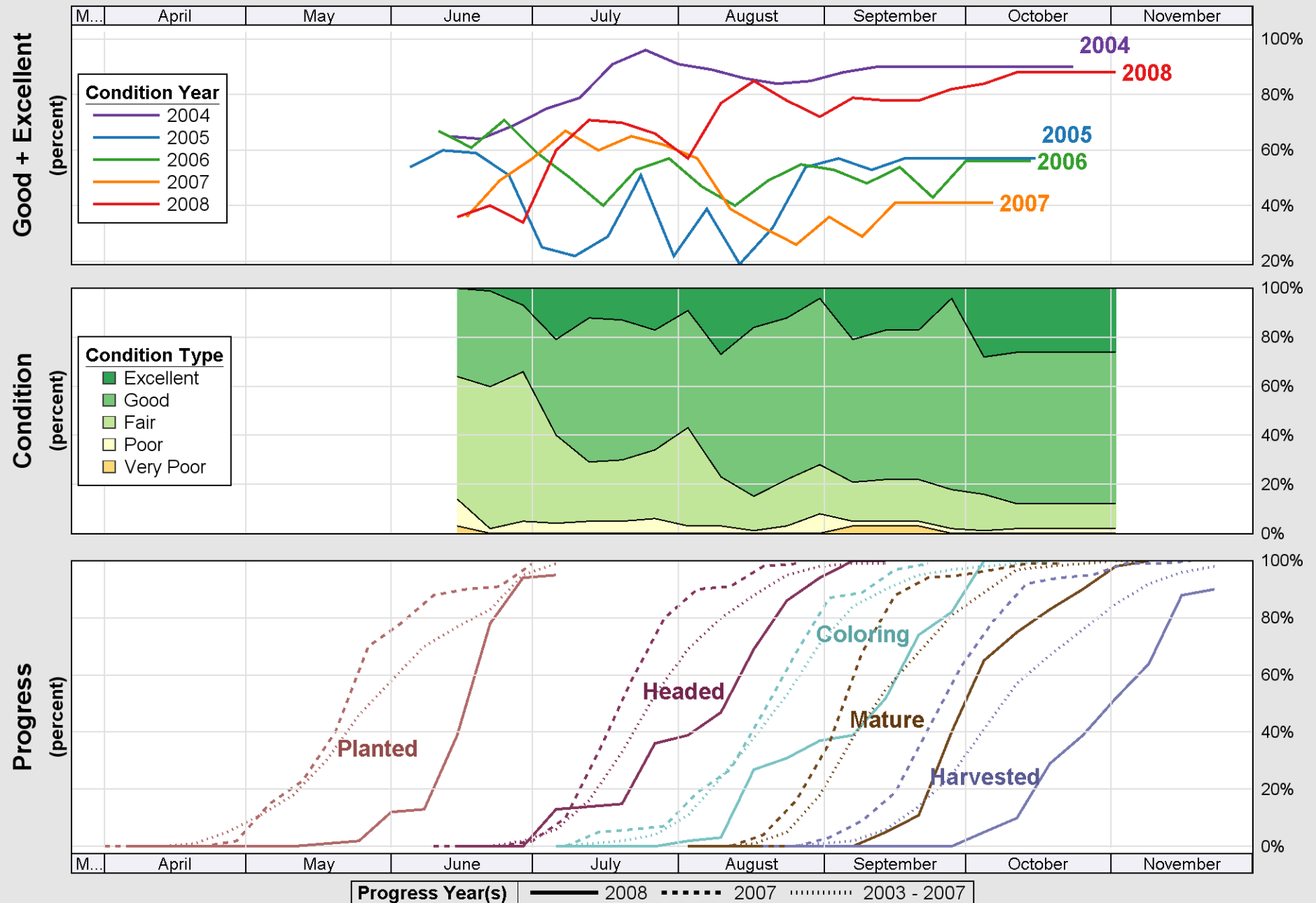


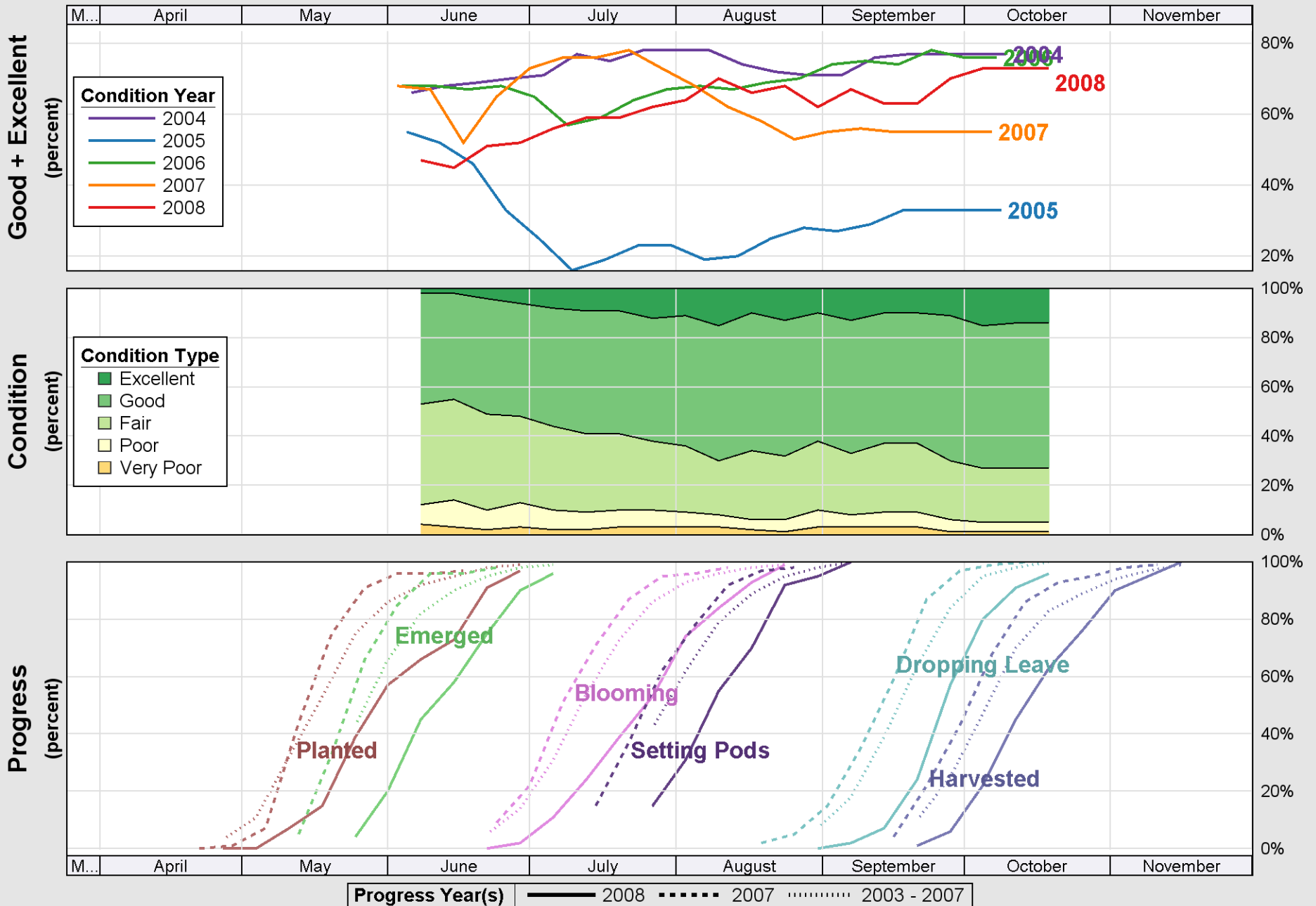
Source: National Agricultural Statistics Service (NASS), Crop Progress Report



Source: National Agricultural Statistics Service (NASS), Crop Progress Report

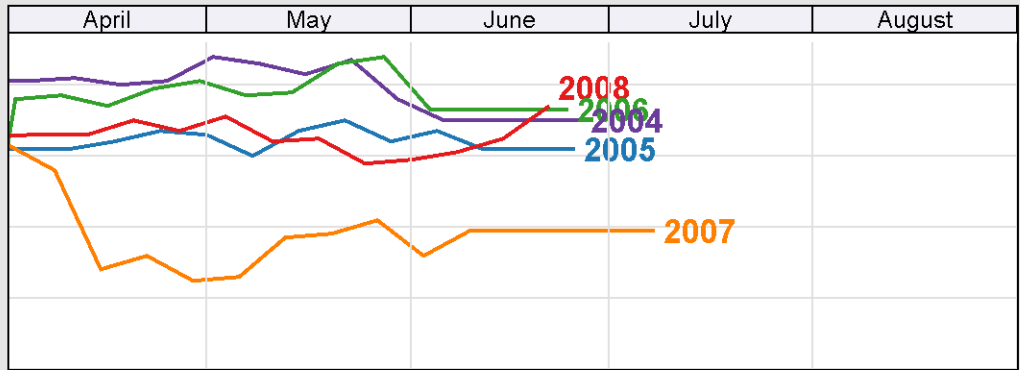
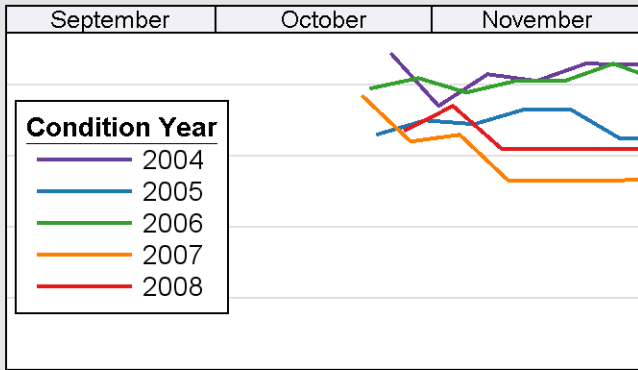


# Crop Progress and Condition: Soybeans in Illinois , 2008

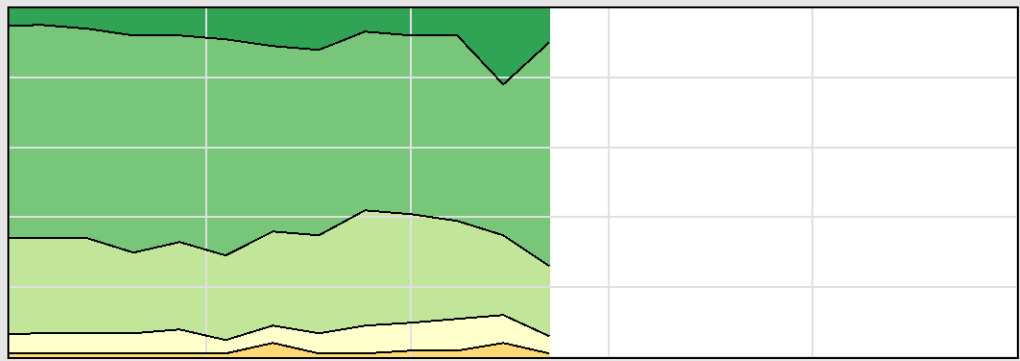
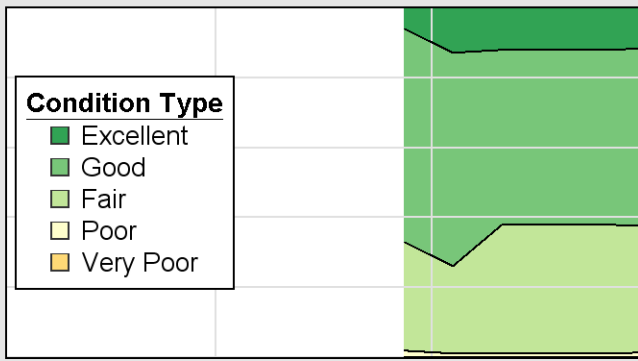


Source: National Agricultural Statistics Service (NASS), Crop Progress Report

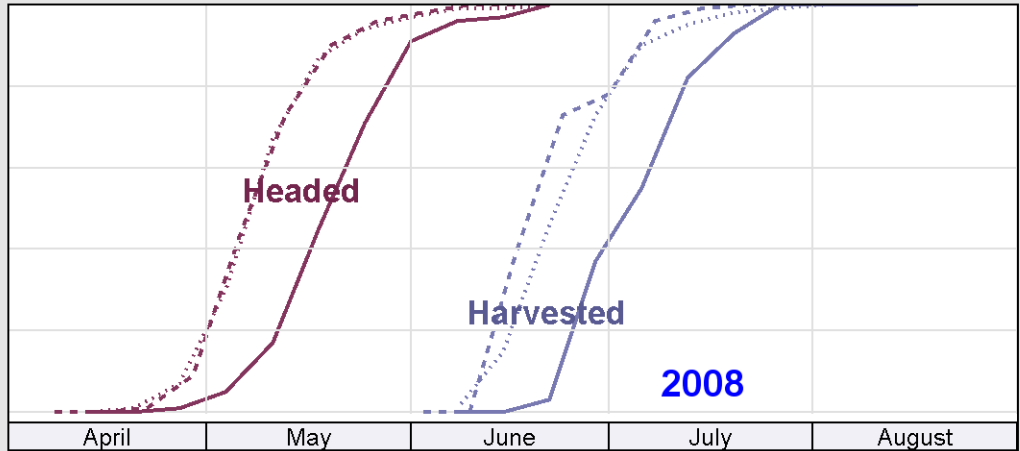
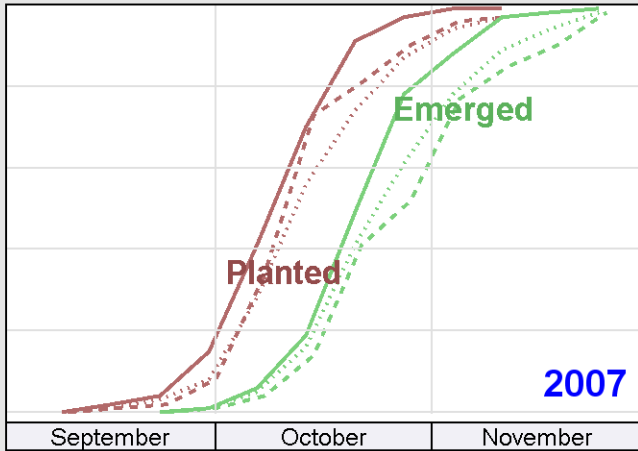
Good + Excellent  
(percent)



Condition  
(percent)



Progress  
(percent)



Progress Year(s) ——— 2008    ····· 2007    ······ 2003 - 2007