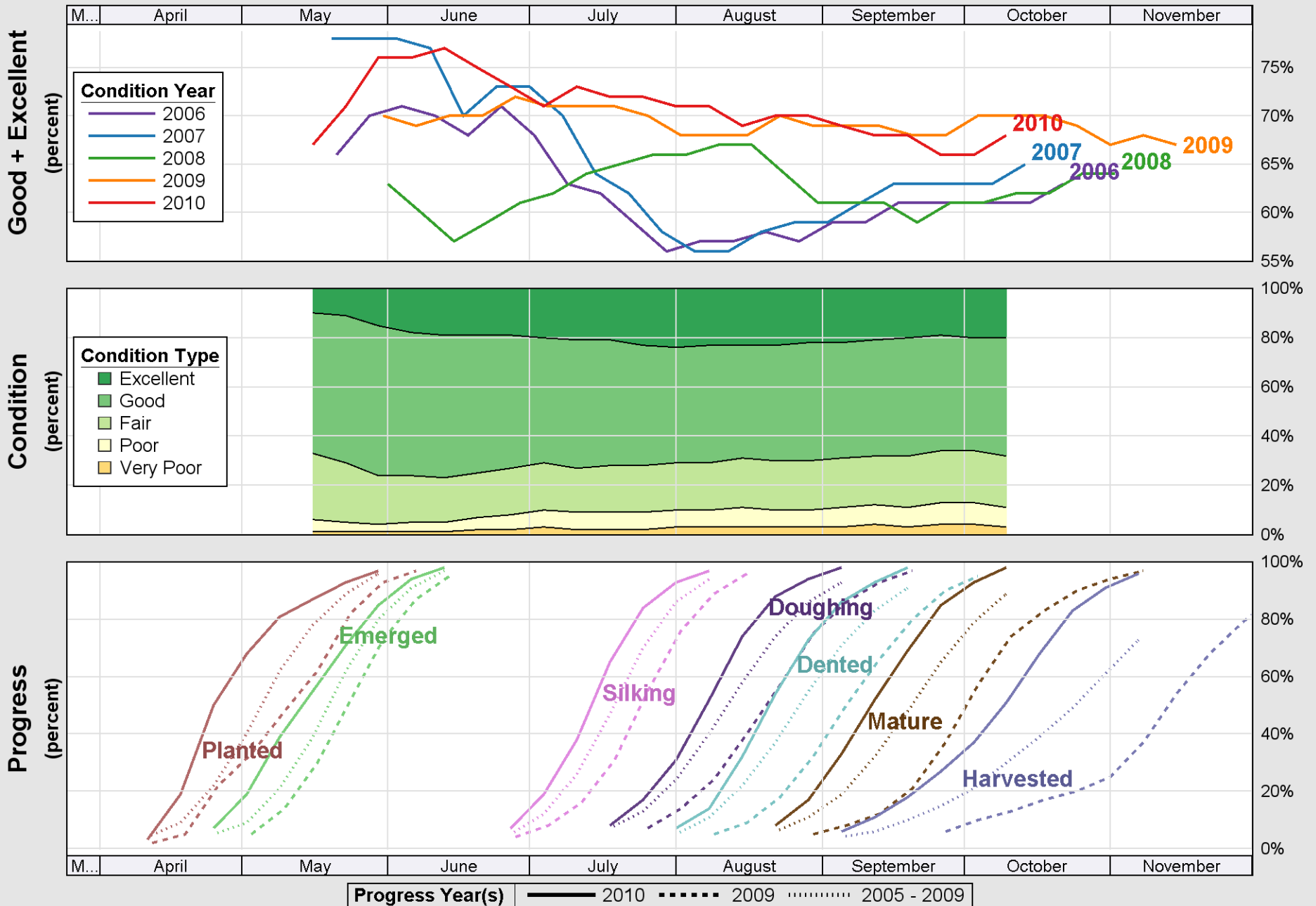
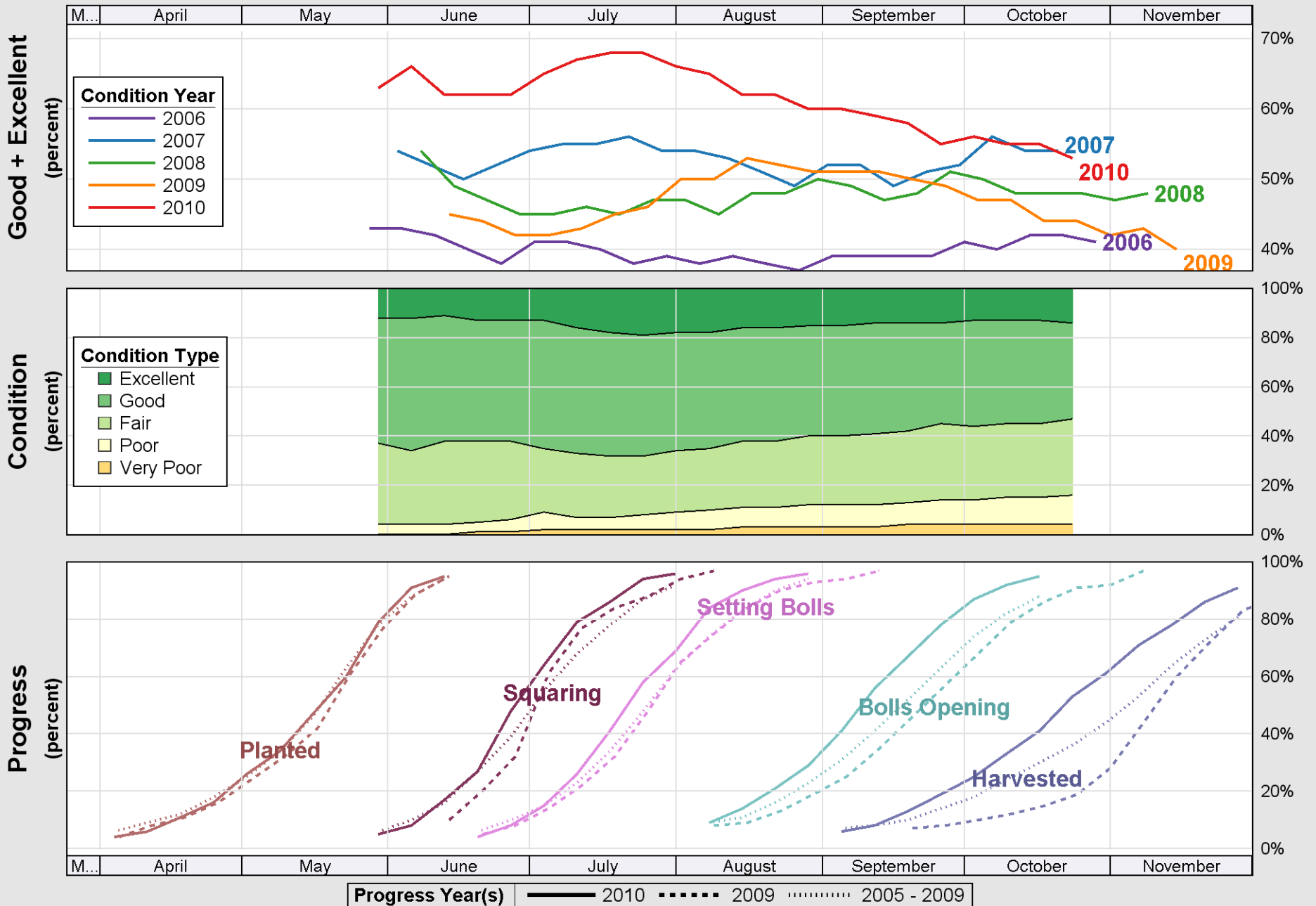
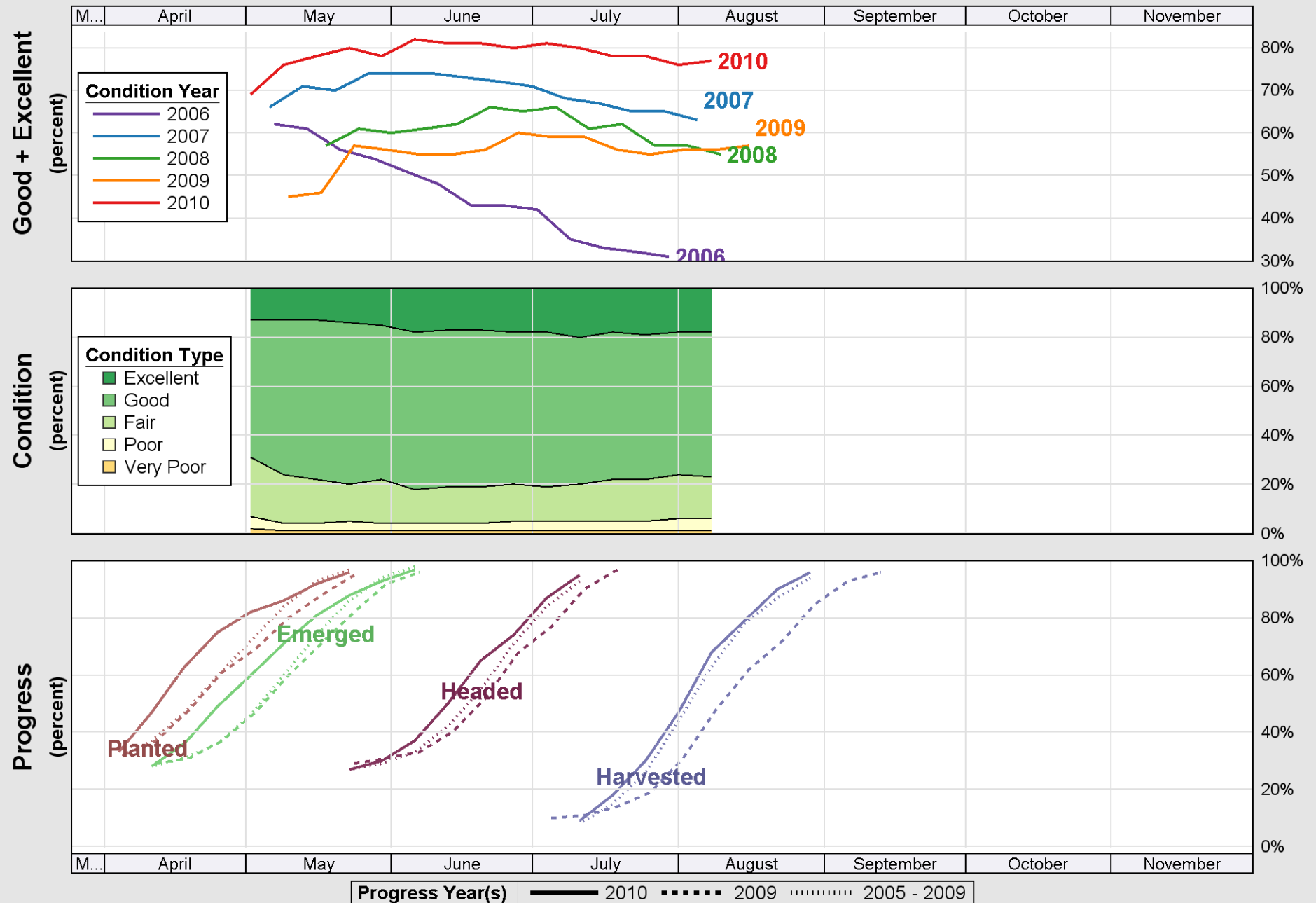


Source: National Agricultural Statistics Service (NASS), Crop Progress Report

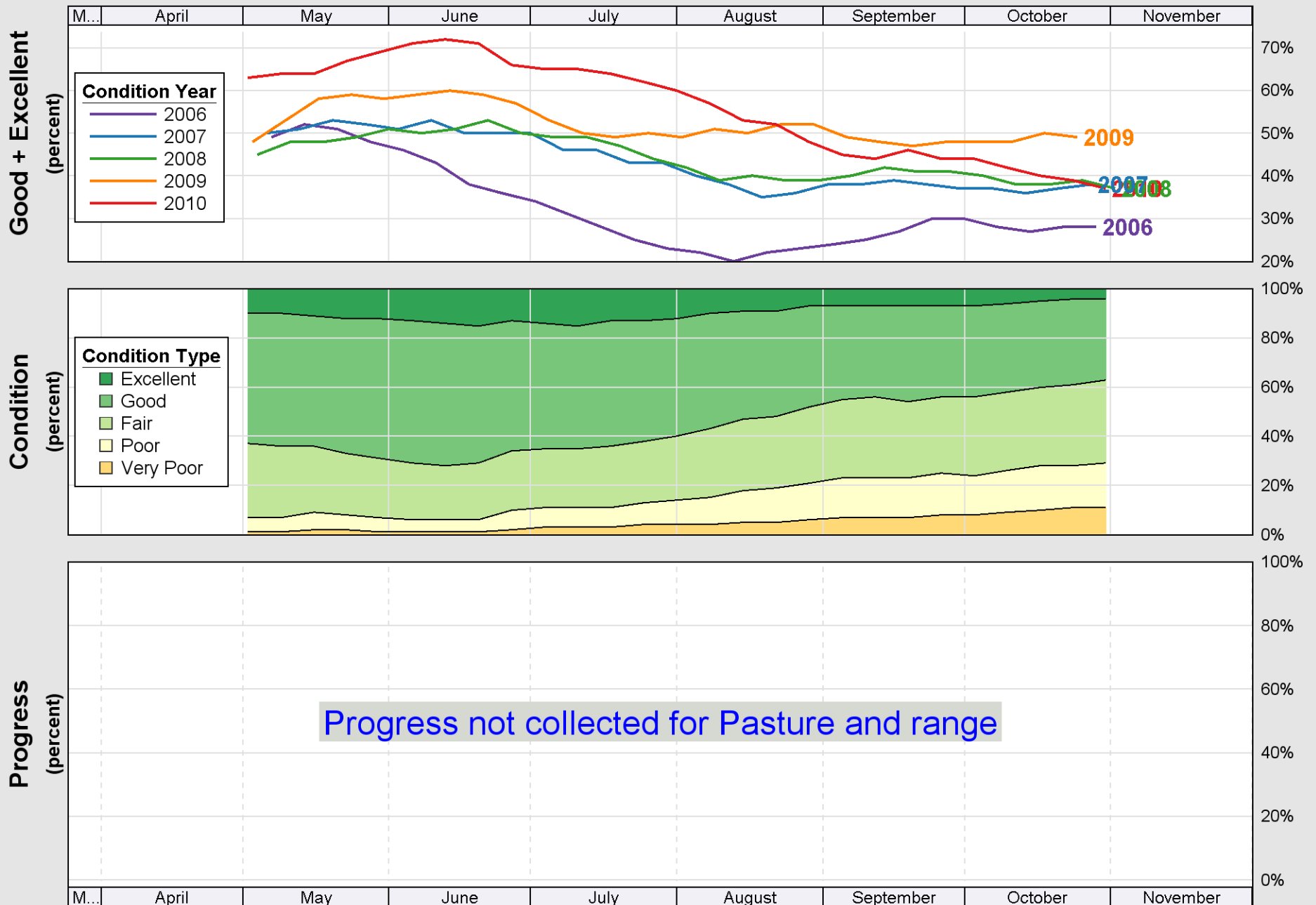


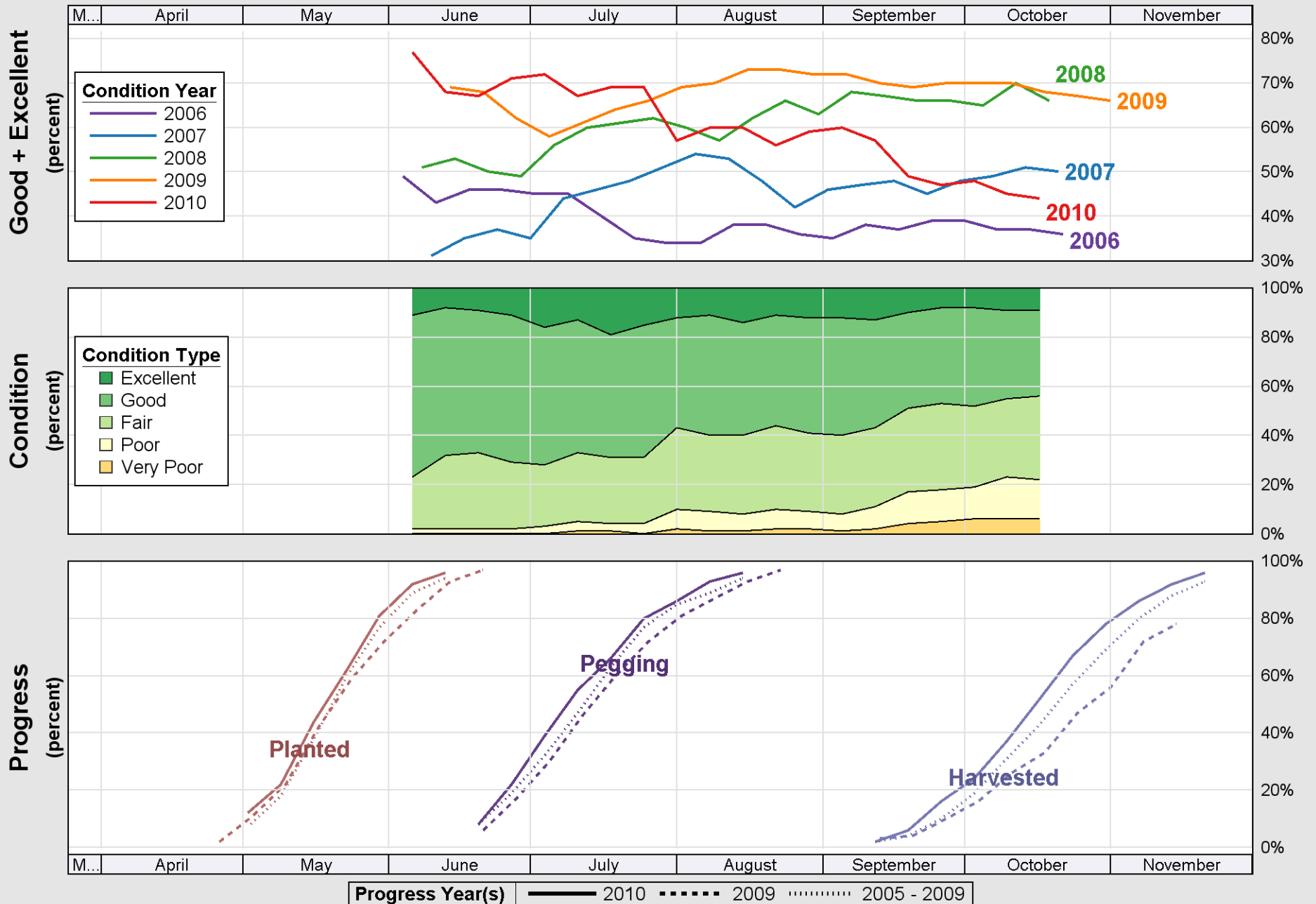


Source: National Agricultural Statistics Service (NASS), Crop Progress Report

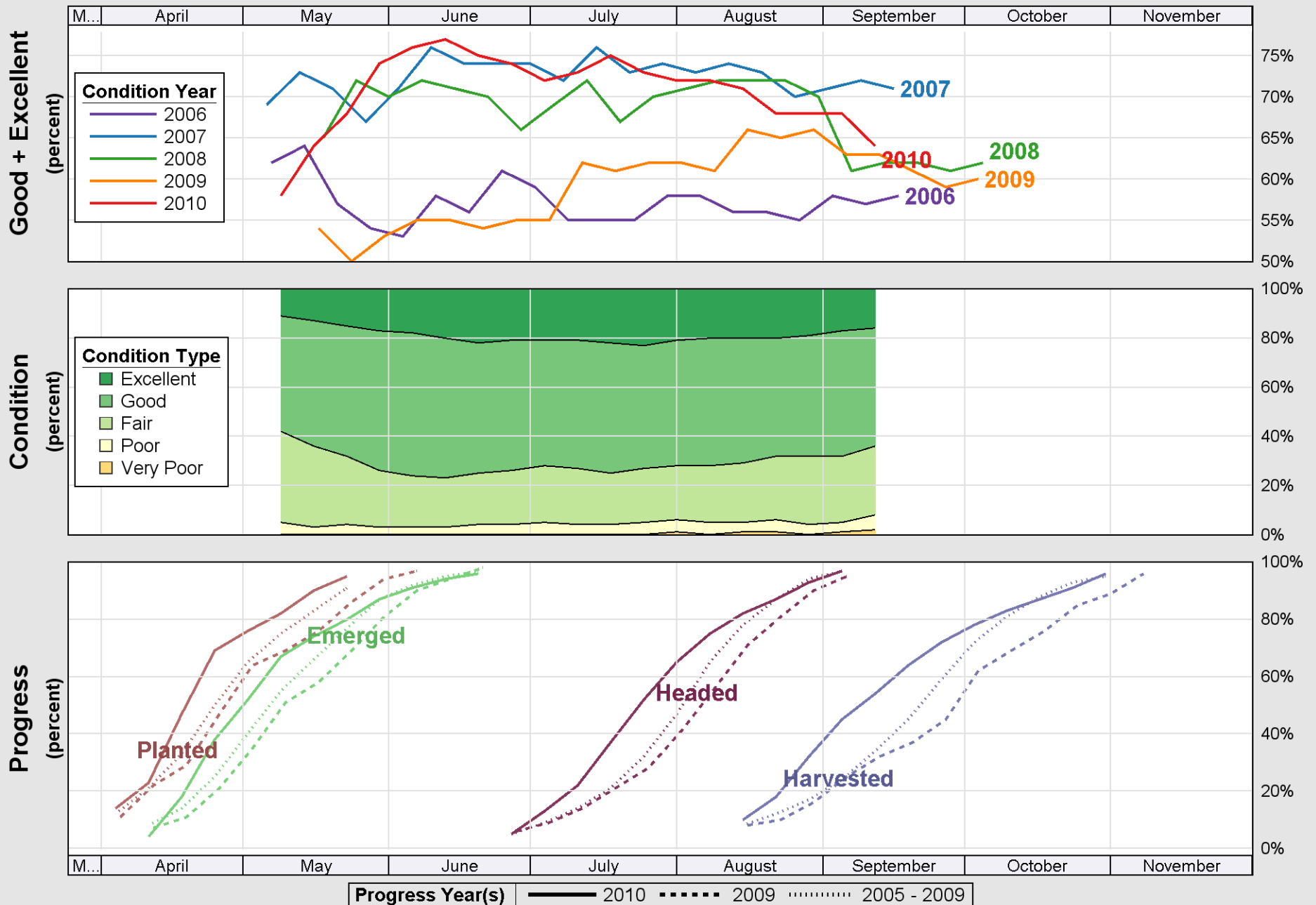


Source: National Agricultural Statistics Service (NASS), Crop Progress Report



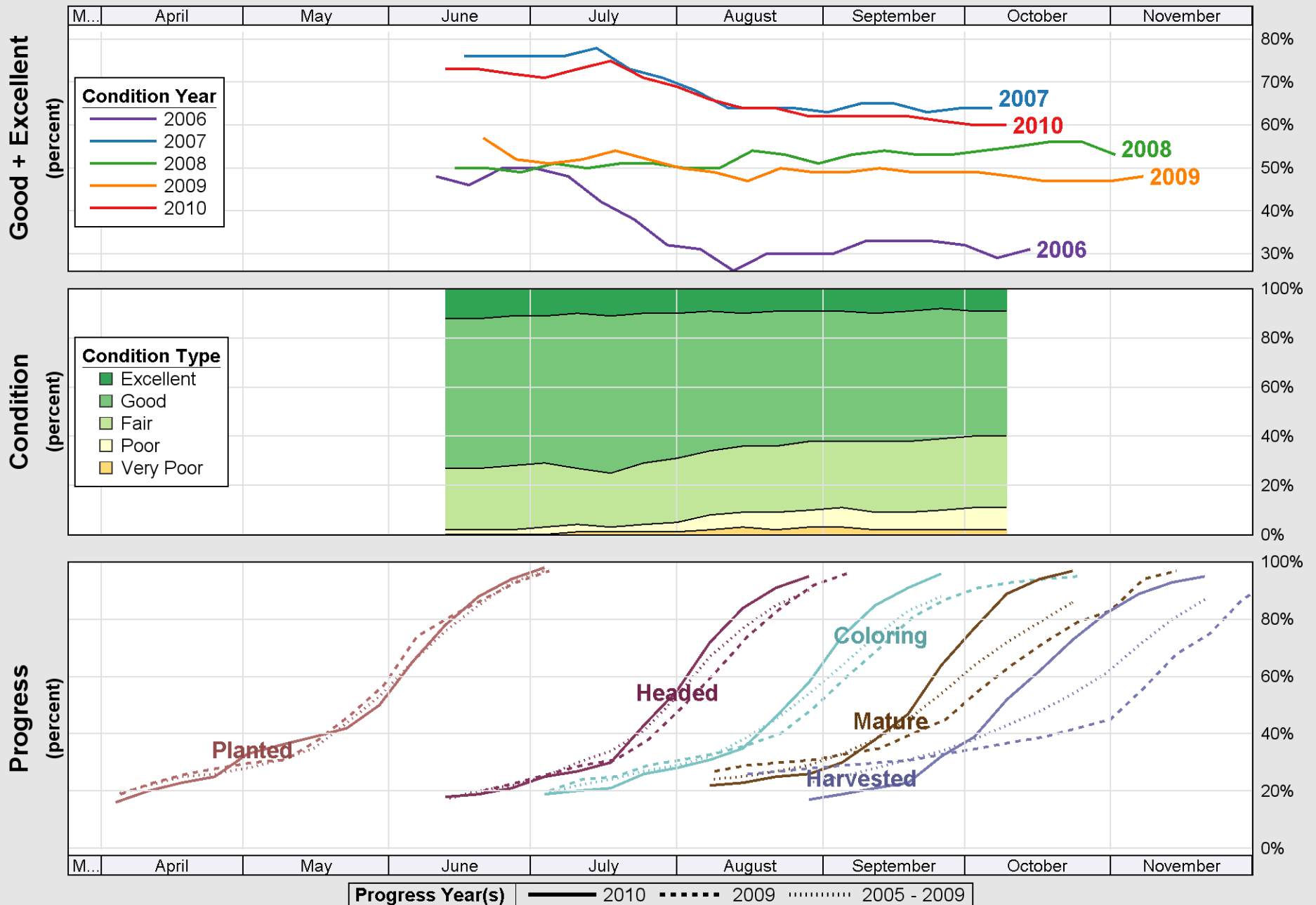


Source: National Agricultural Statistics Service (NASS), Crop Progress Report

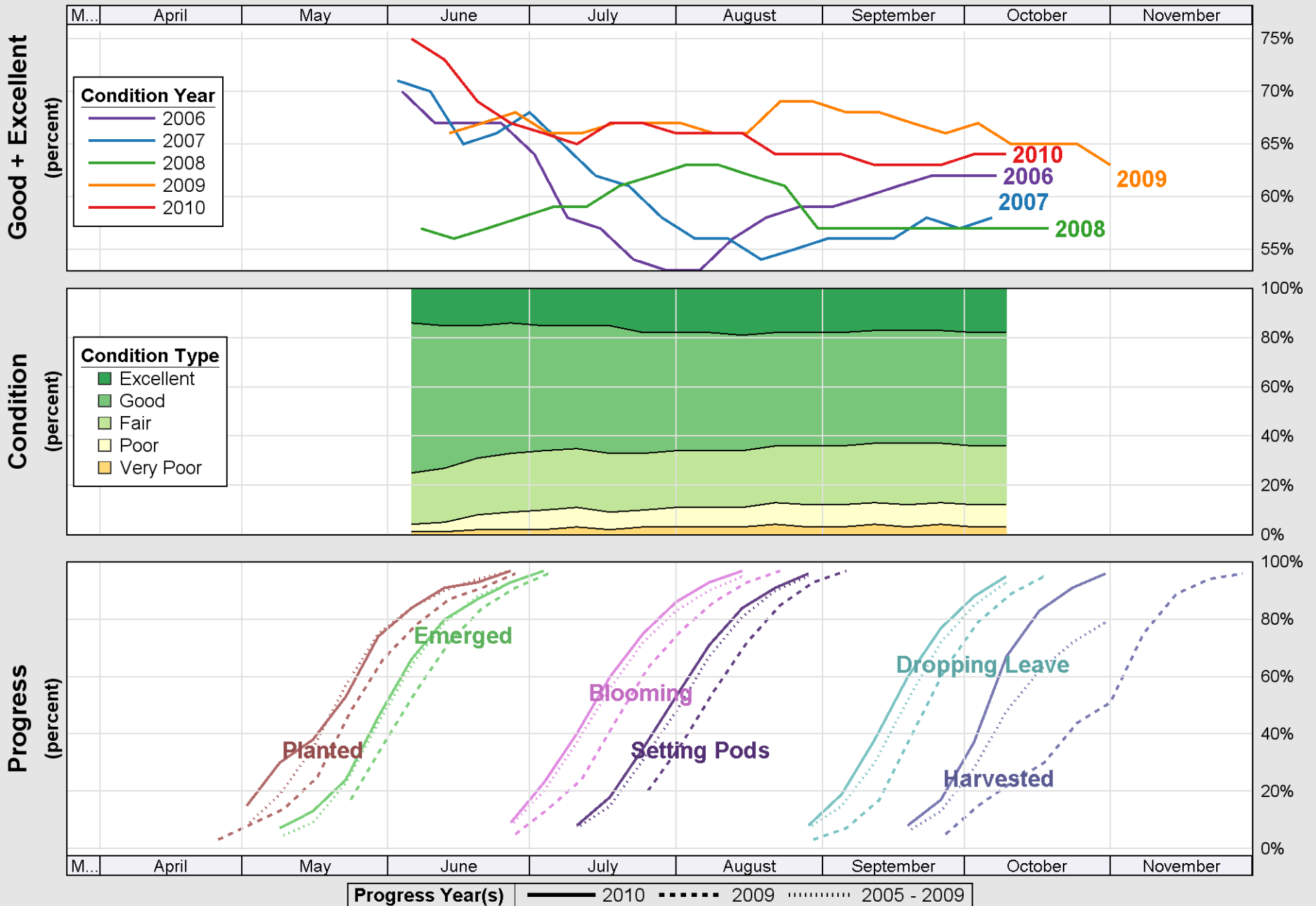


Source: National Agricultural Statistics Service (NASS), Crop Progress Report

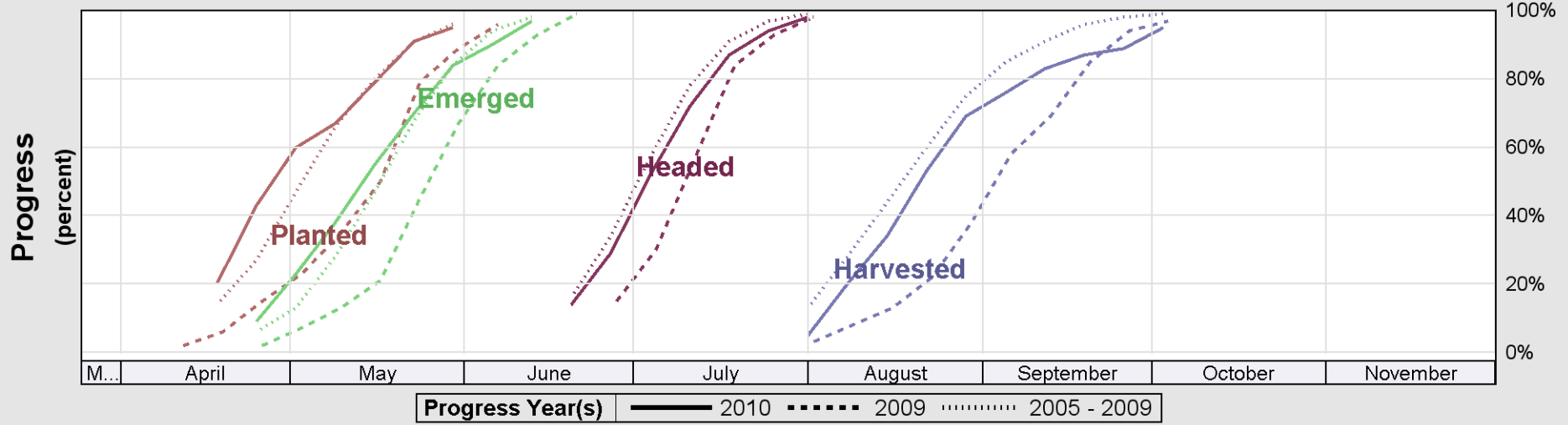
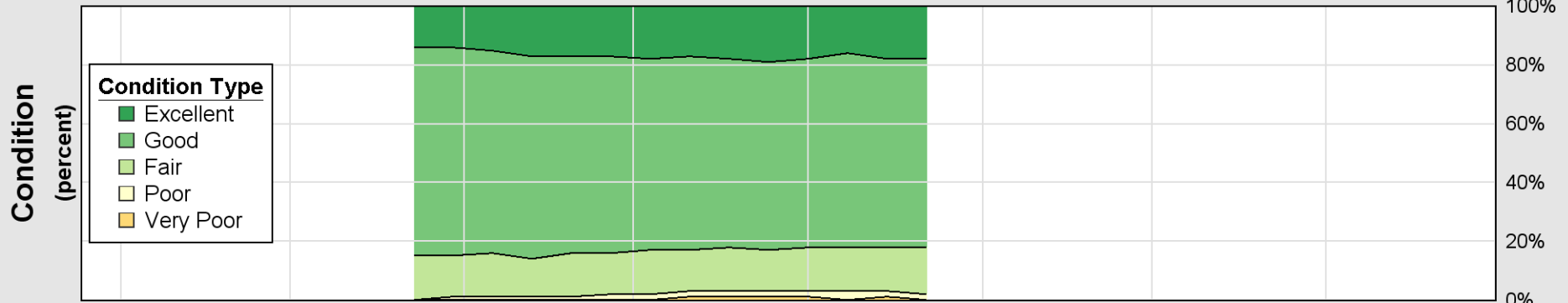
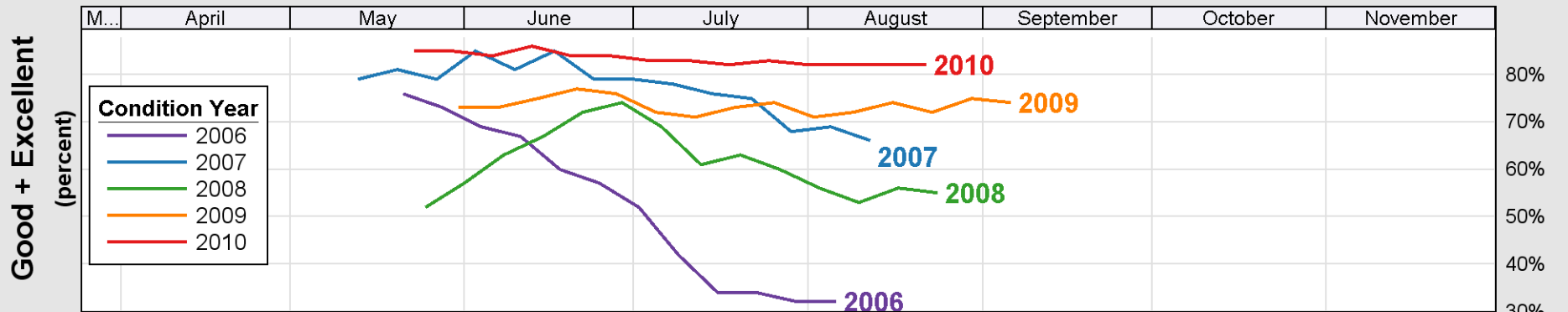
Crop Progress and Condition: Sorghum in United States , 2010



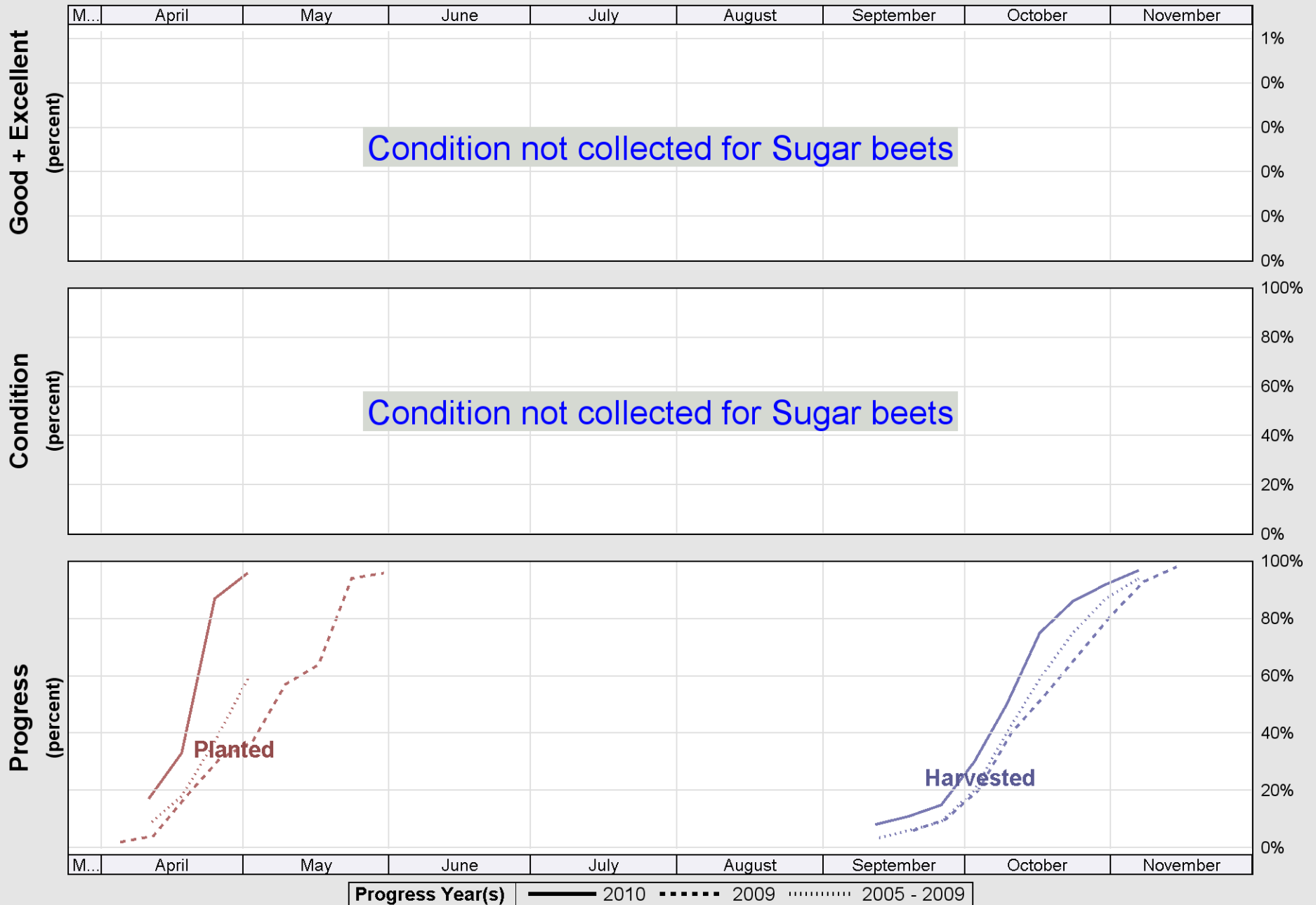
Source: National Agricultural Statistics Service (NASS), Crop Progress Report



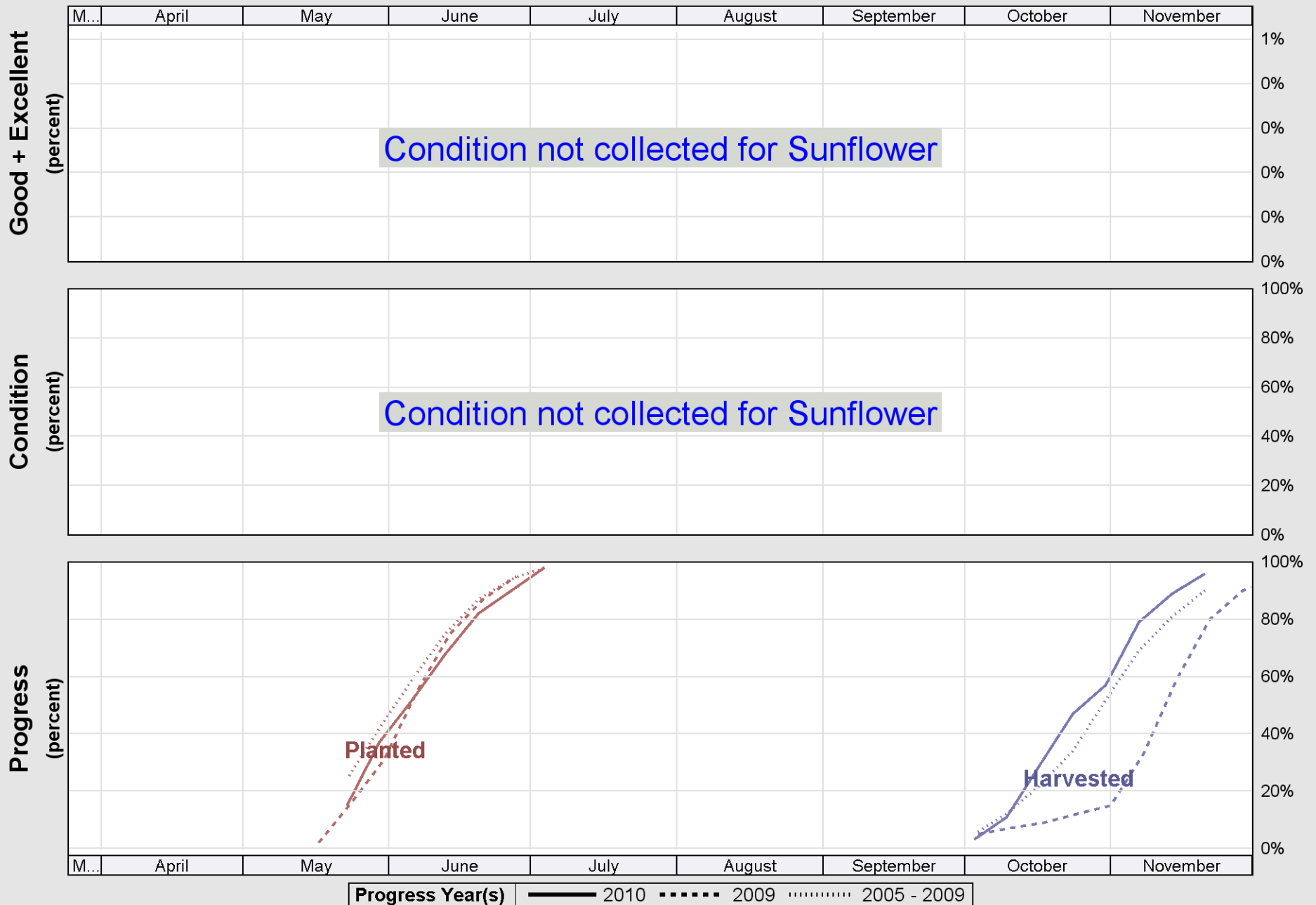
Source: National Agricultural Statistics Service (NASS), Crop Progress Report



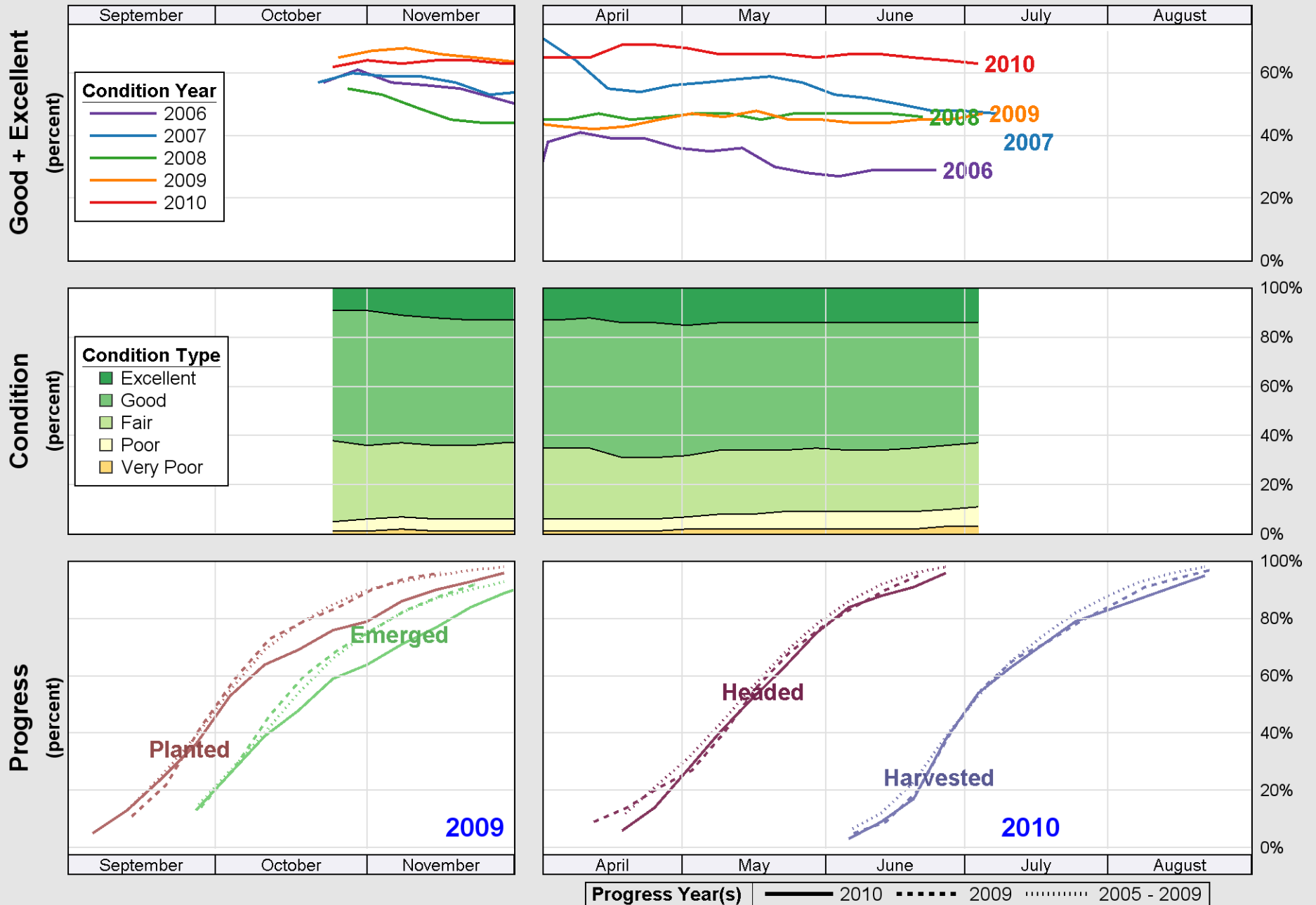
Source: National Agricultural Statistics Service (NASS), Crop Progress Report



Source: National Agricultural Statistics Service (NASS), Crop Progress Report



Source: National Agricultural Statistics Service (NASS), Crop Progress Report



Source: National Agricultural Statistics Service (NASS), Crop Progress Report