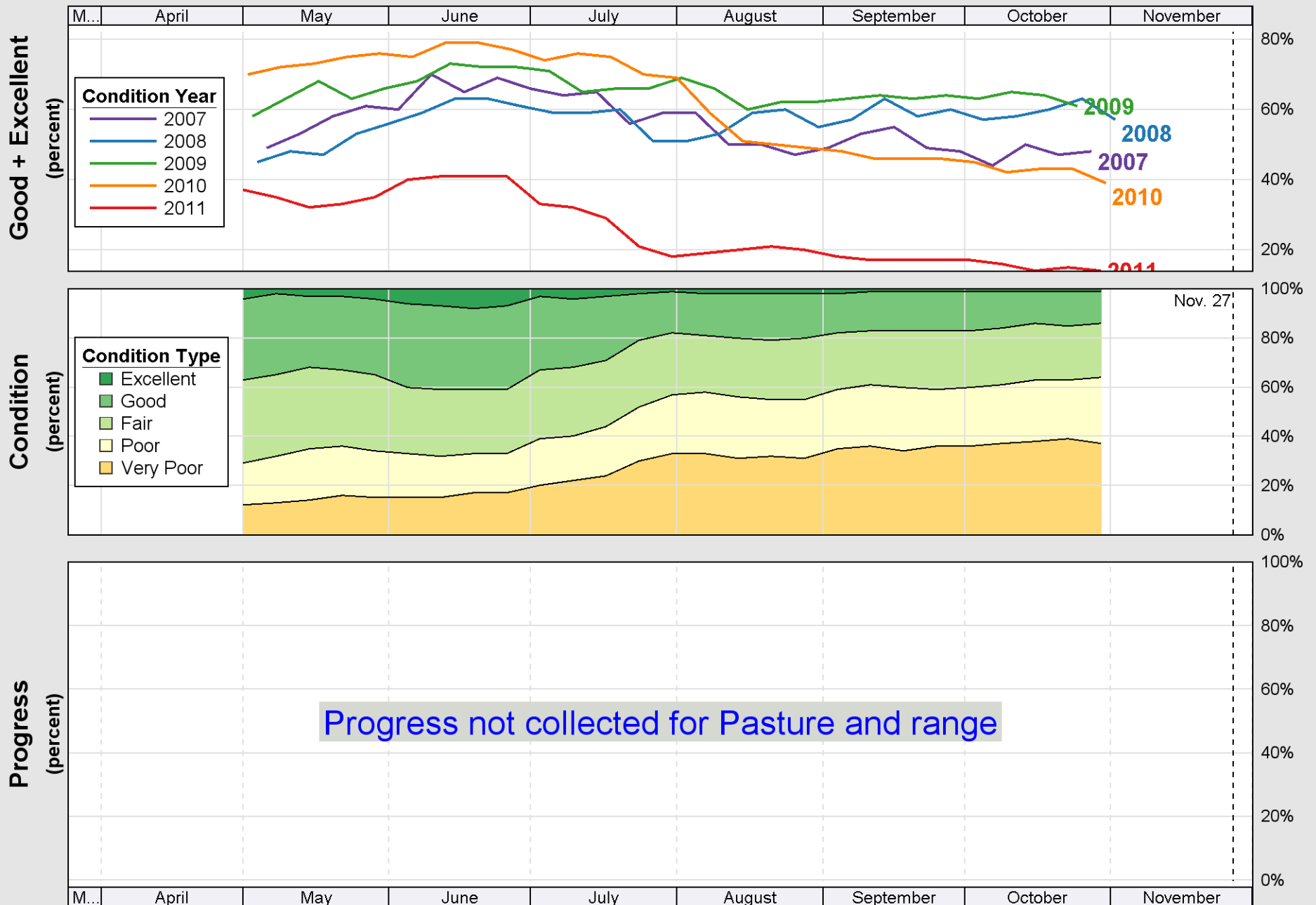
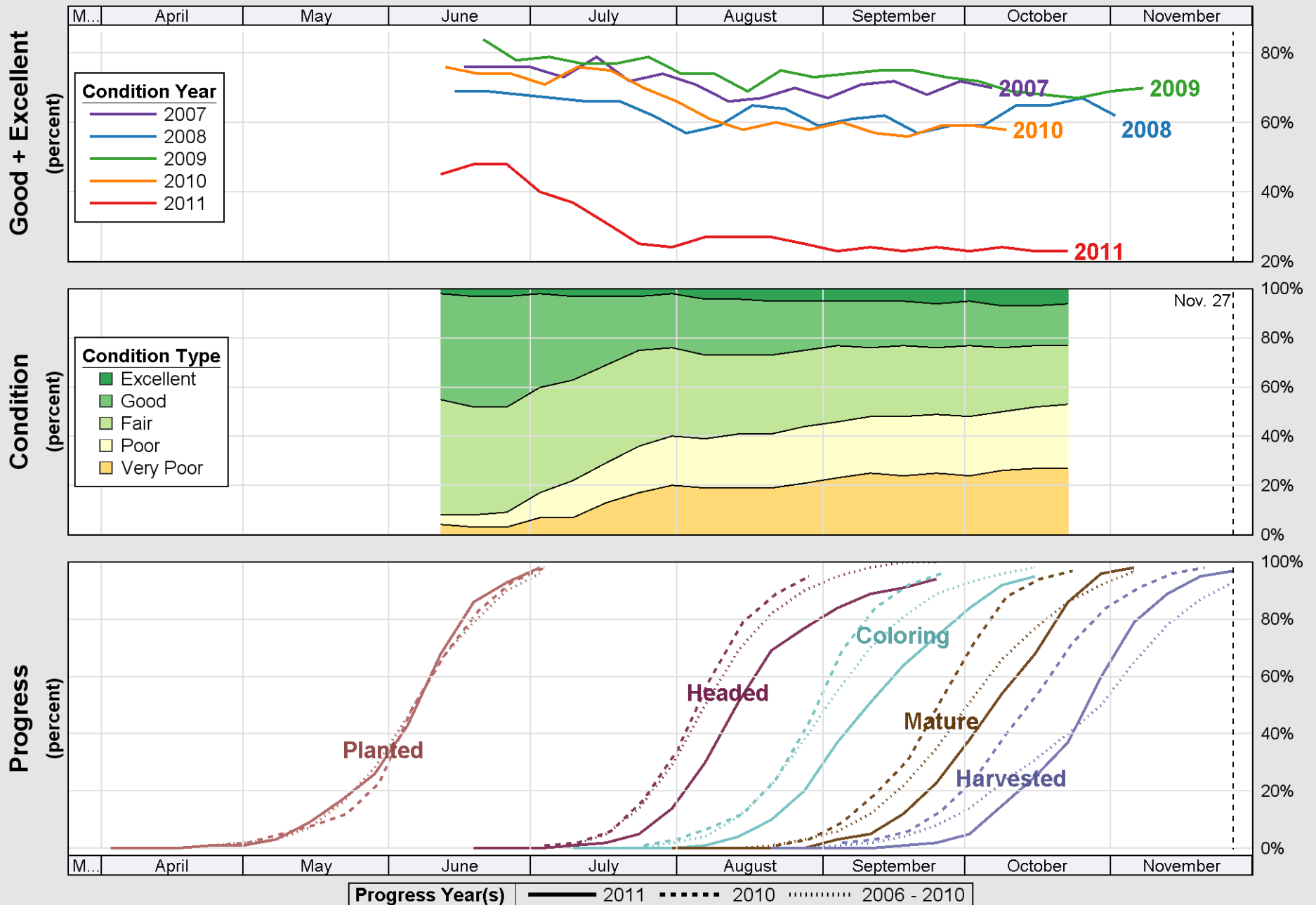
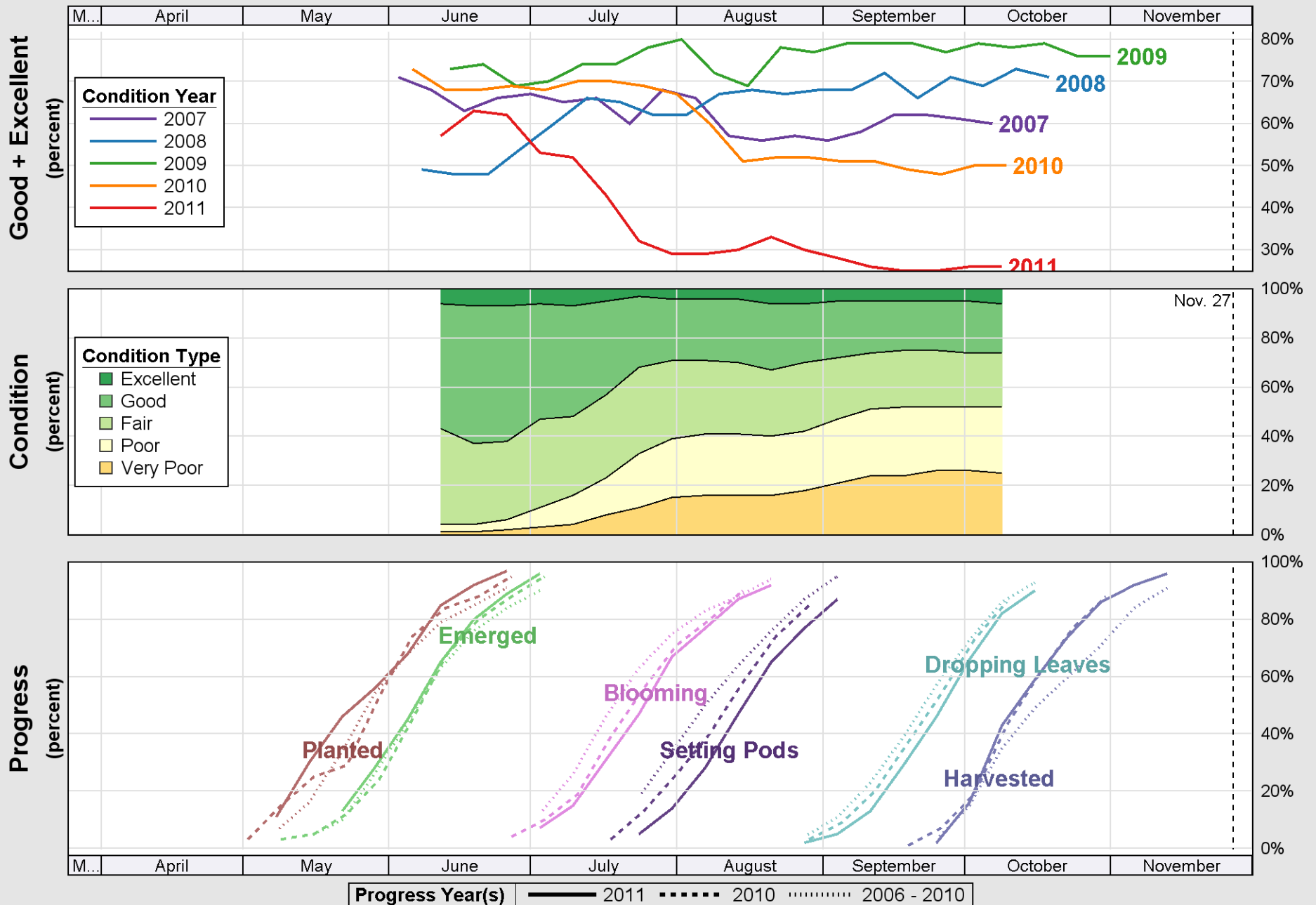


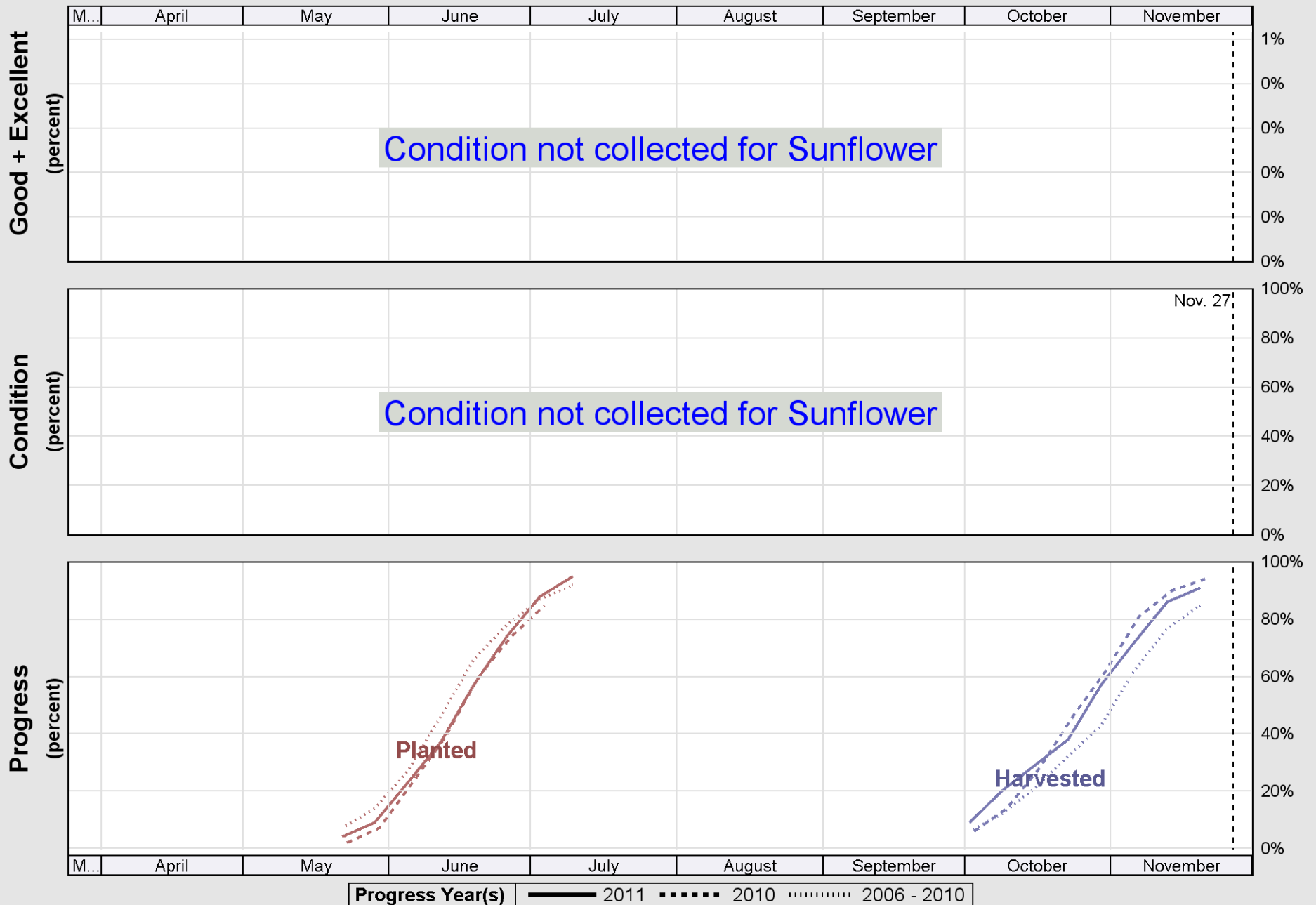
Source: National Agricultural Statistics Service (NASS), Crop Progress Report





Source: National Agricultural Statistics Service (NASS), Crop Progress Report

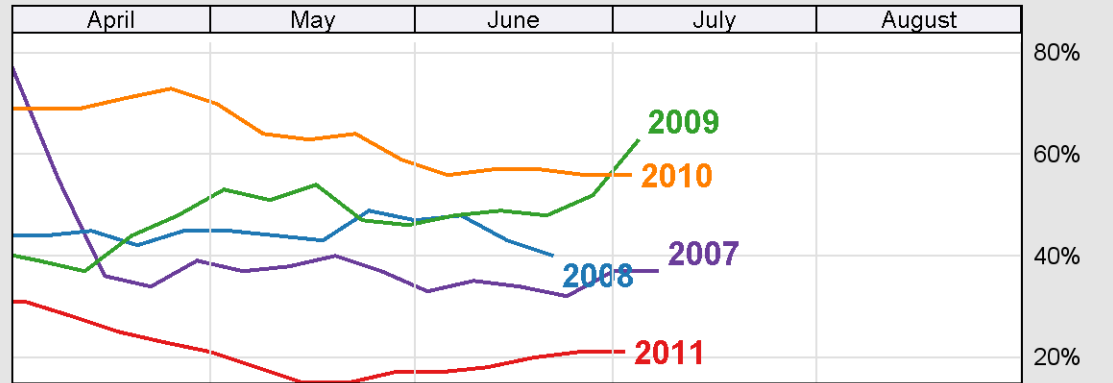
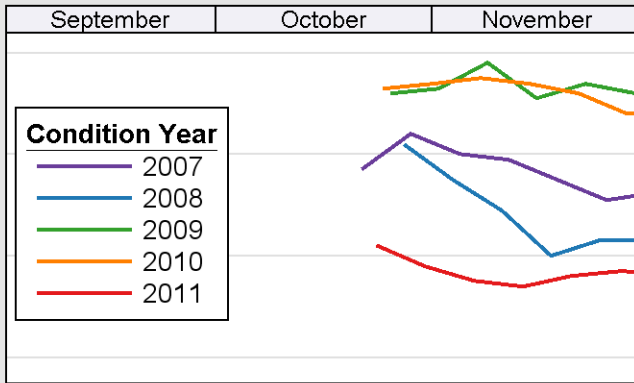




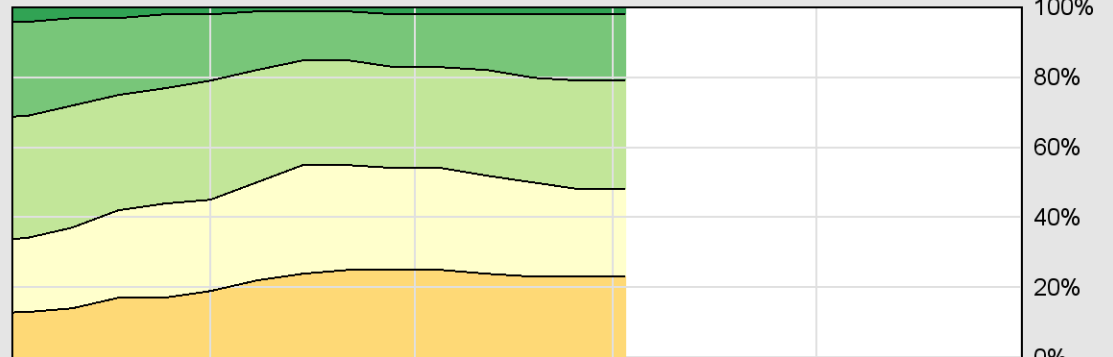
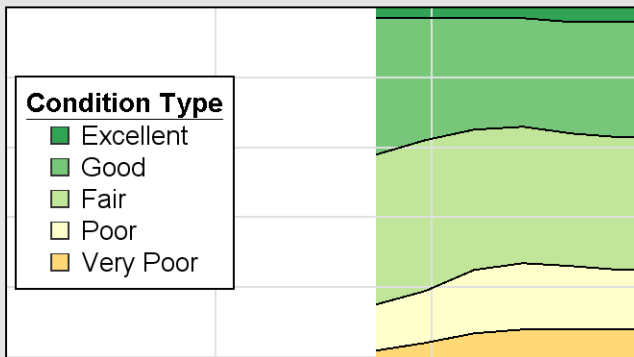
Source: National Agricultural Statistics Service (NASS), Crop Progress Report

# Crop Progress and Condition: Winter wheat in Kansas , 2011

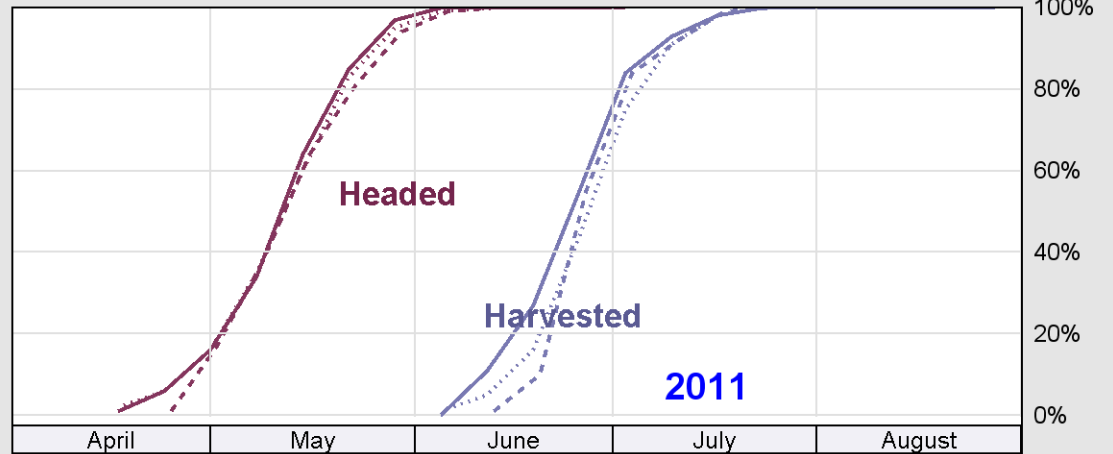
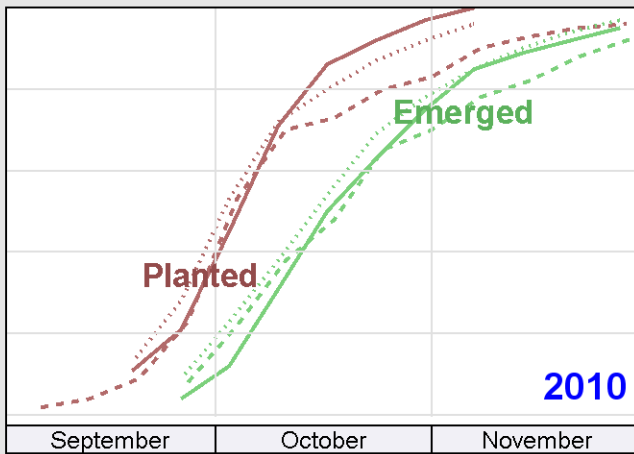
Good + Excellent  
(percent)



Condition  
(percent)



Progress  
(percent)



Progress Year(s) ——— 2011    ····· 2010    ······ 2006 - 2010