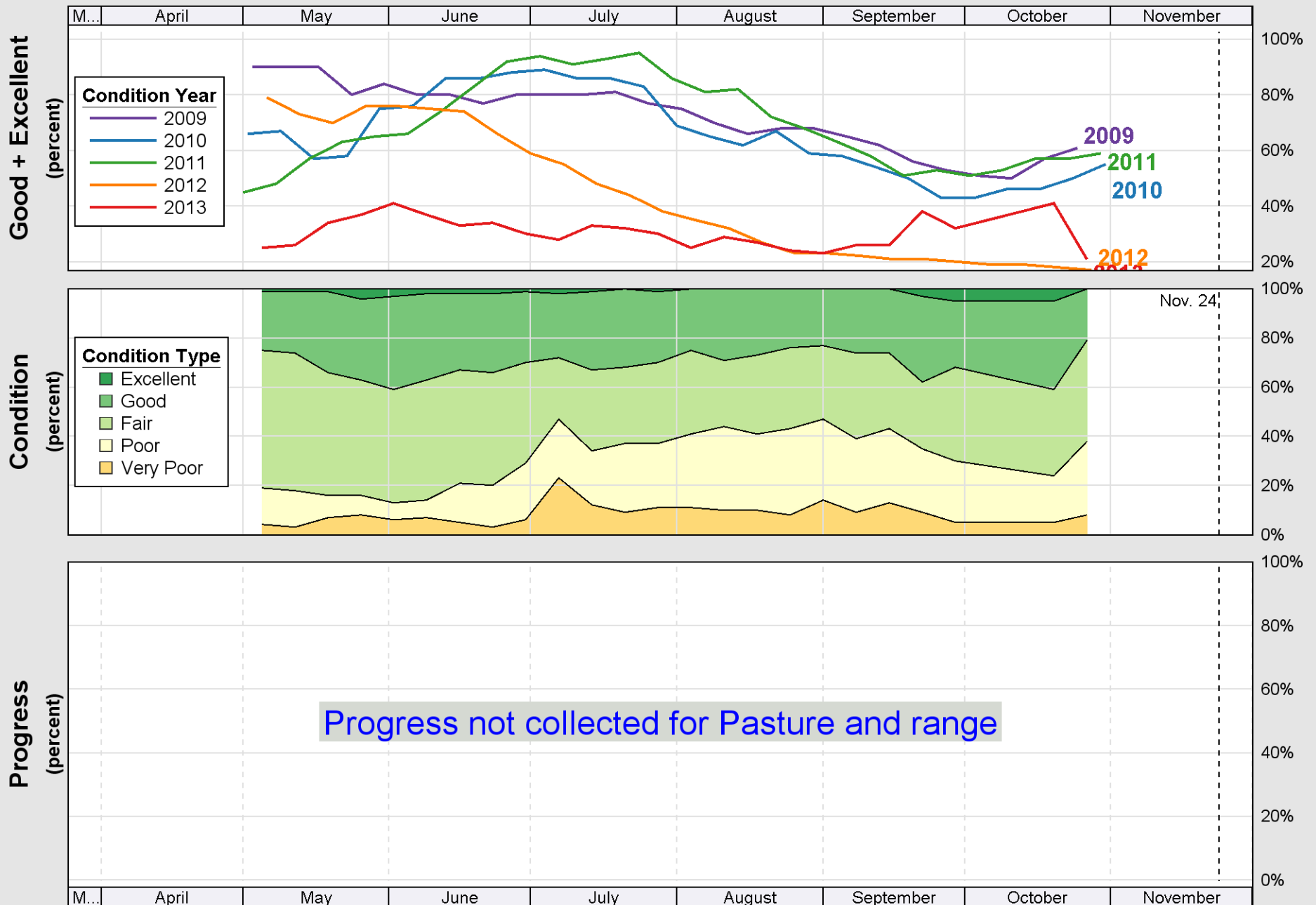
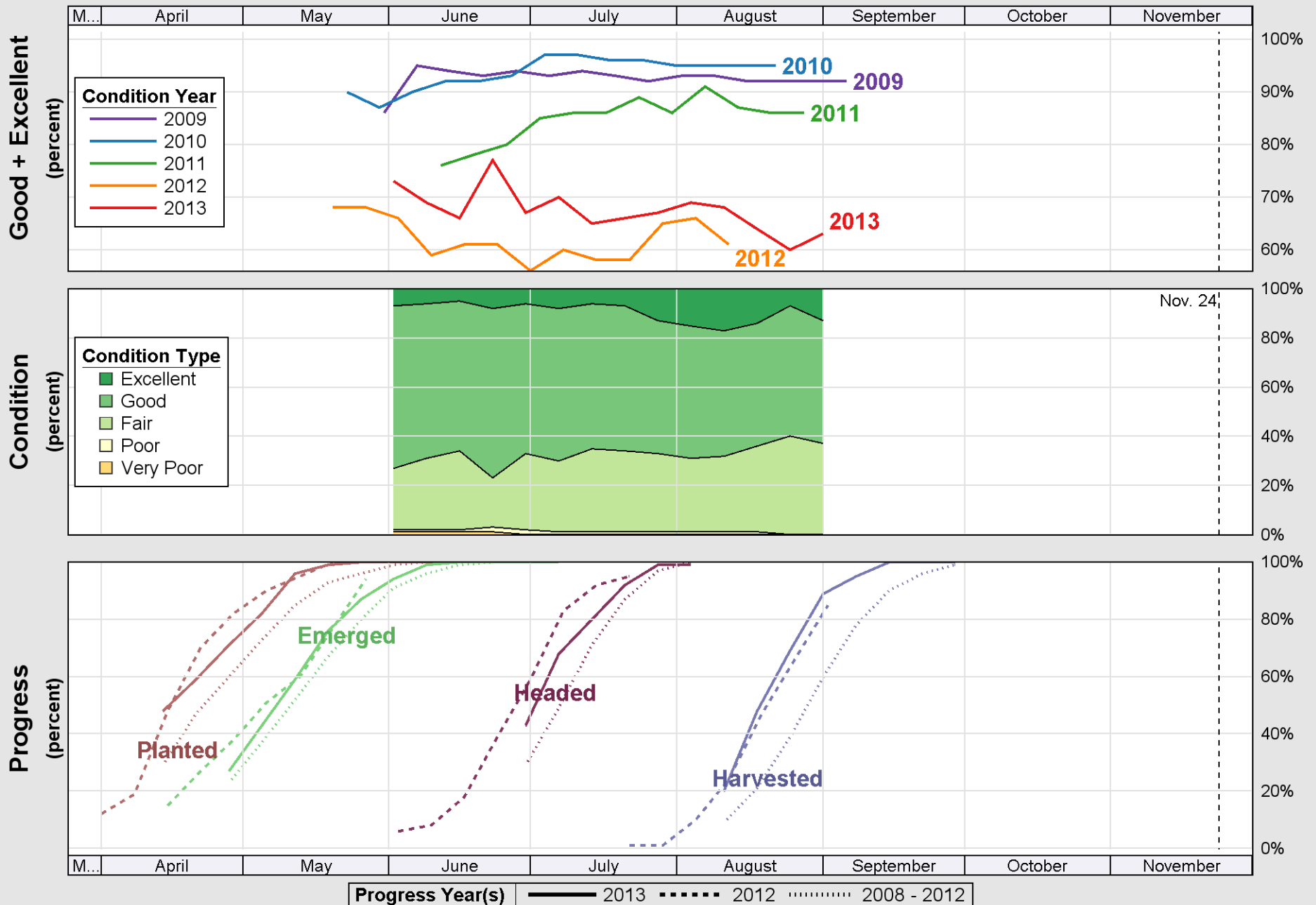


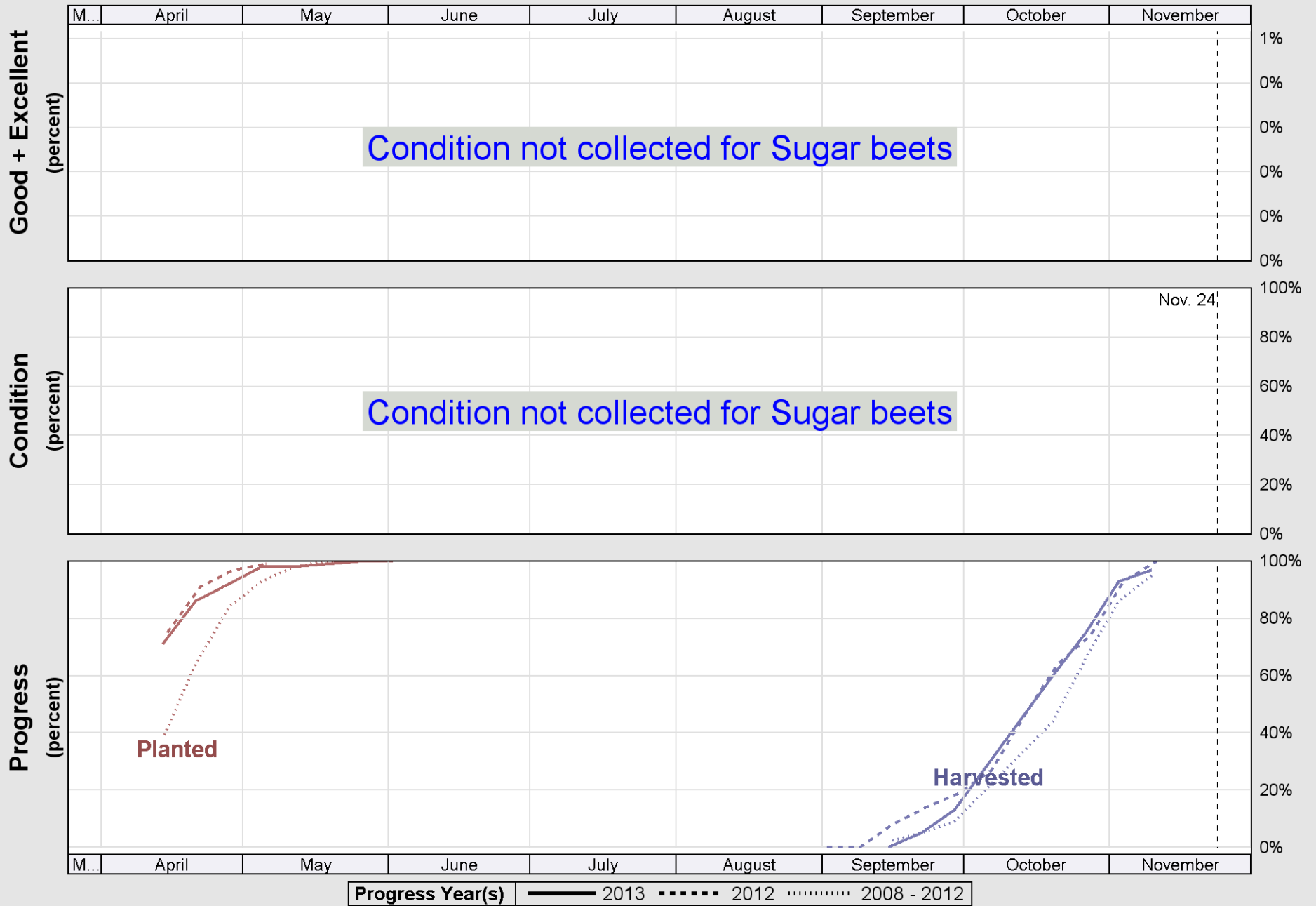
Source: National Agricultural Statistics Service (NASS), Crop Progress Report



Source: National Agricultural Statistics Service (NASS), Crop Progress Report

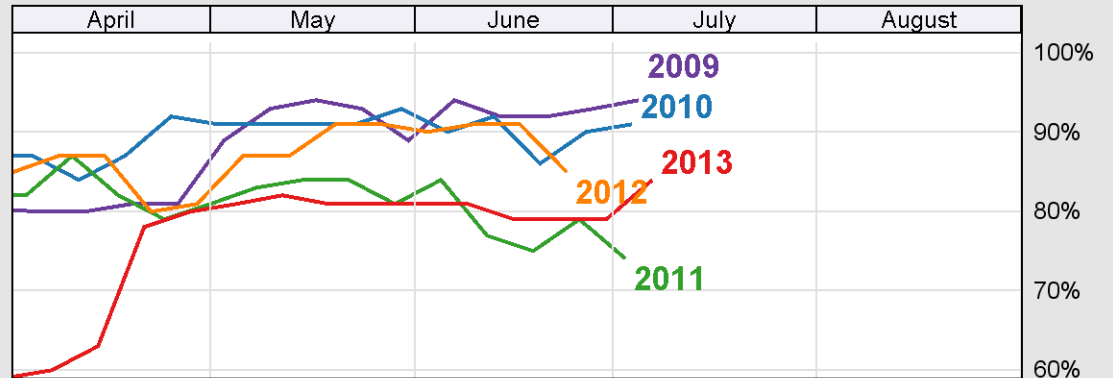
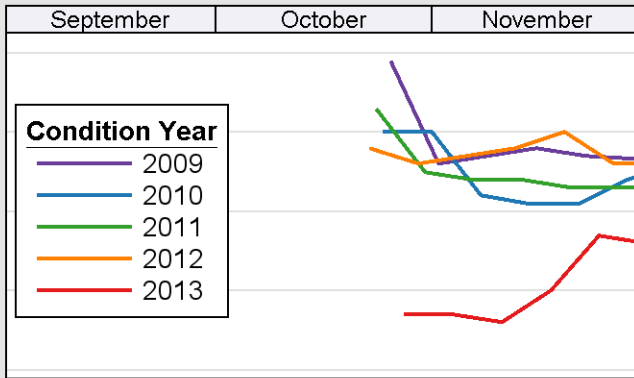


Source: National Agricultural Statistics Service (NASS), Crop Progress Report

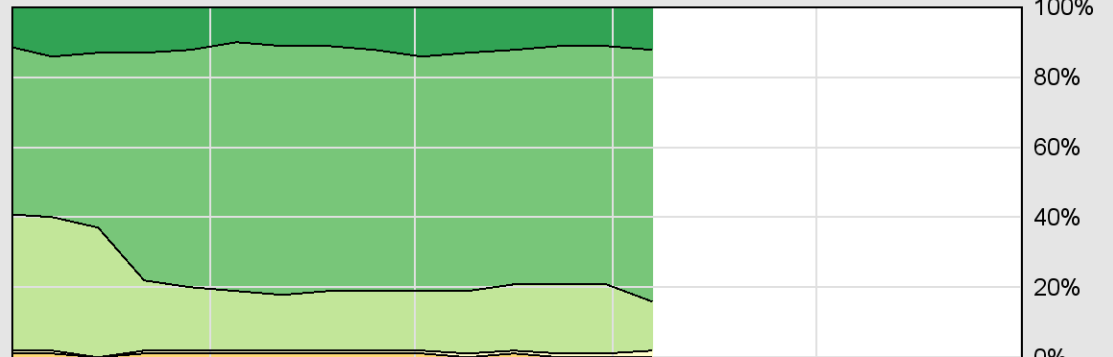
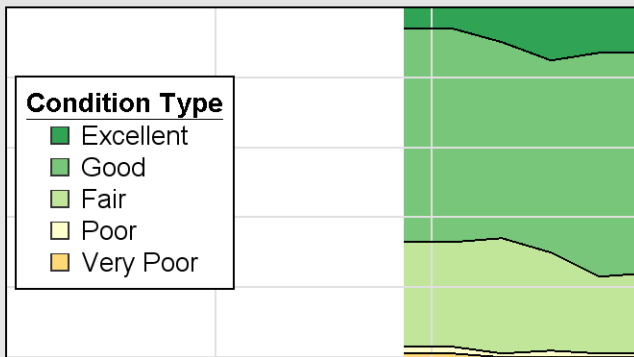


Source: National Agricultural Statistics Service (NASS), Crop Progress Report

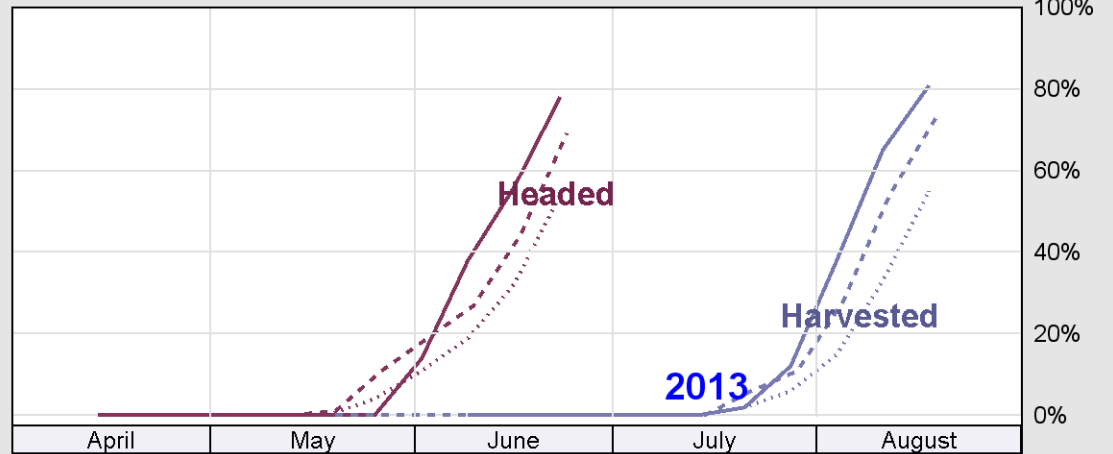
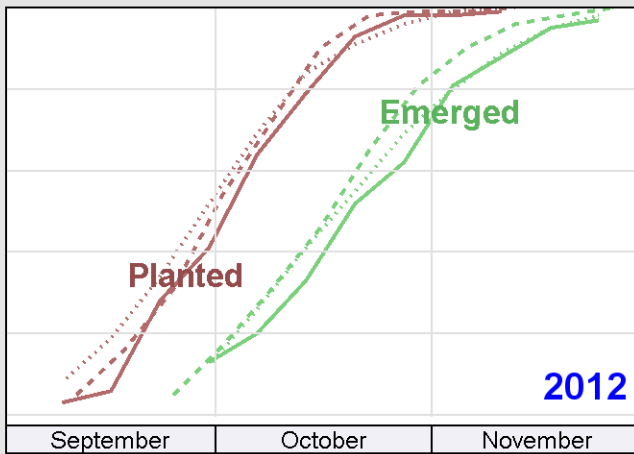
Good + Excellent
(percent)



Condition
(percent)



Progress
(percent)



Progress Year(s) ——— 2013 - - - - - 2012 2008 - 2012