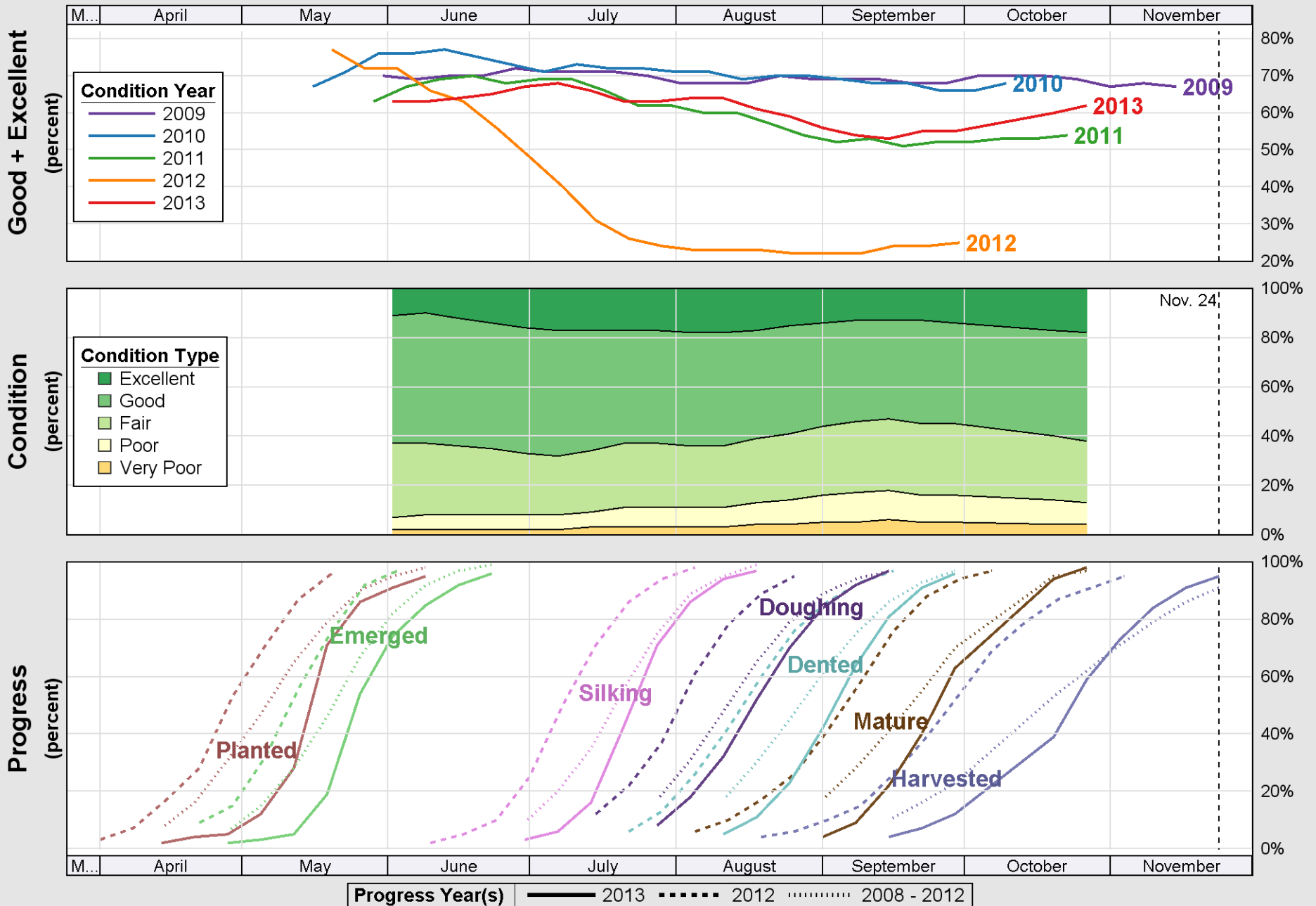
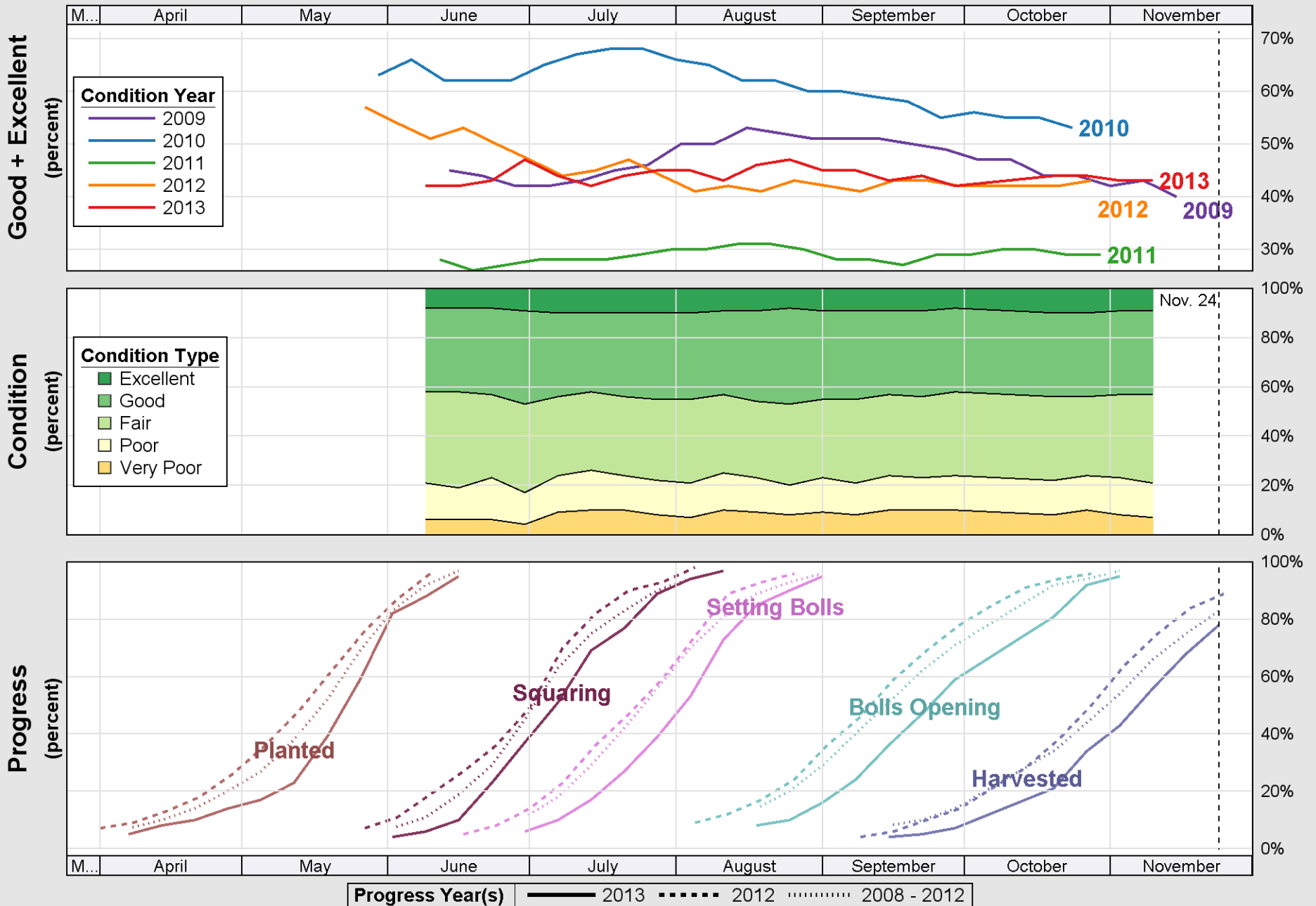


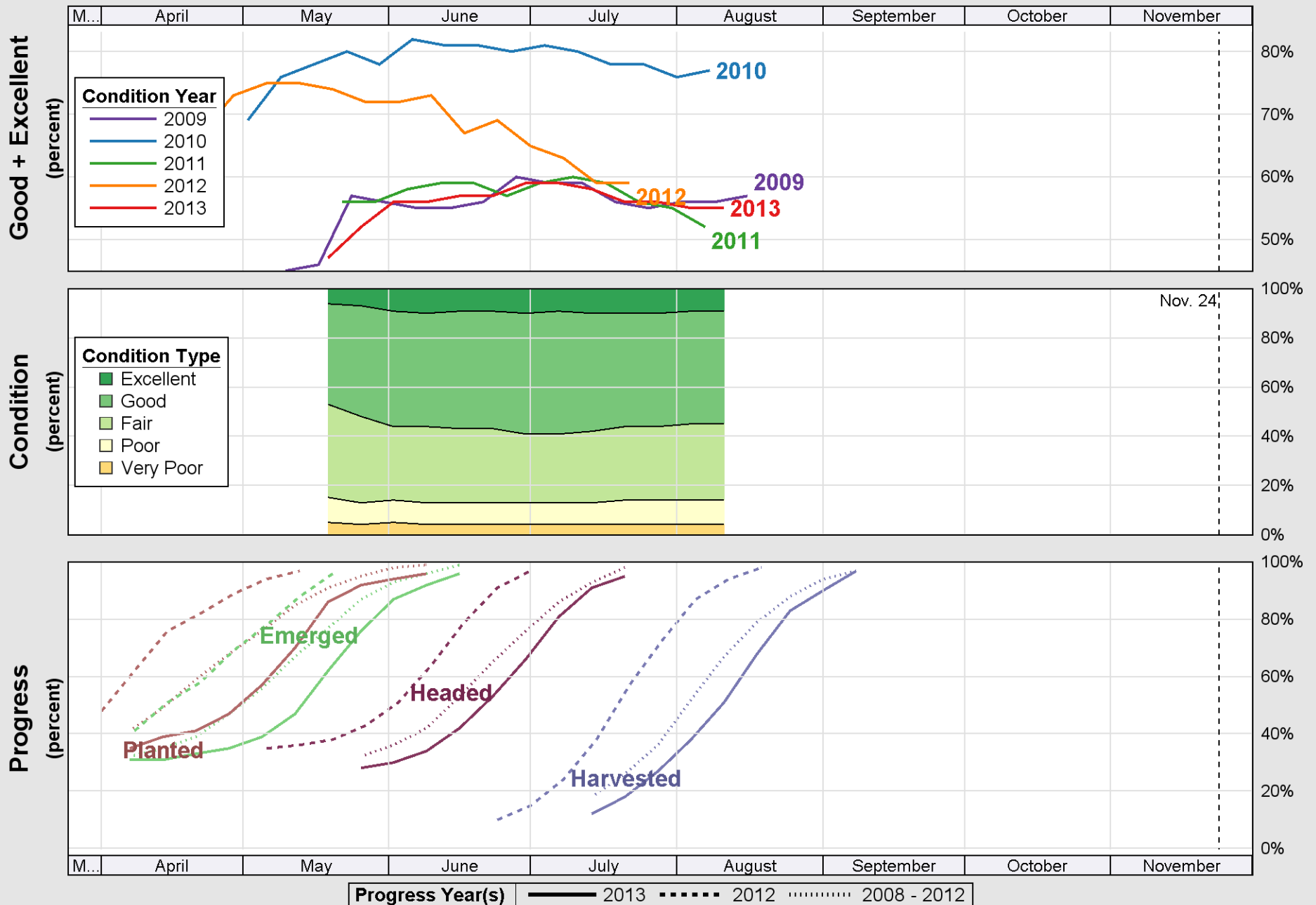
Source: National Agricultural Statistics Service (NASS), Crop Progress Report

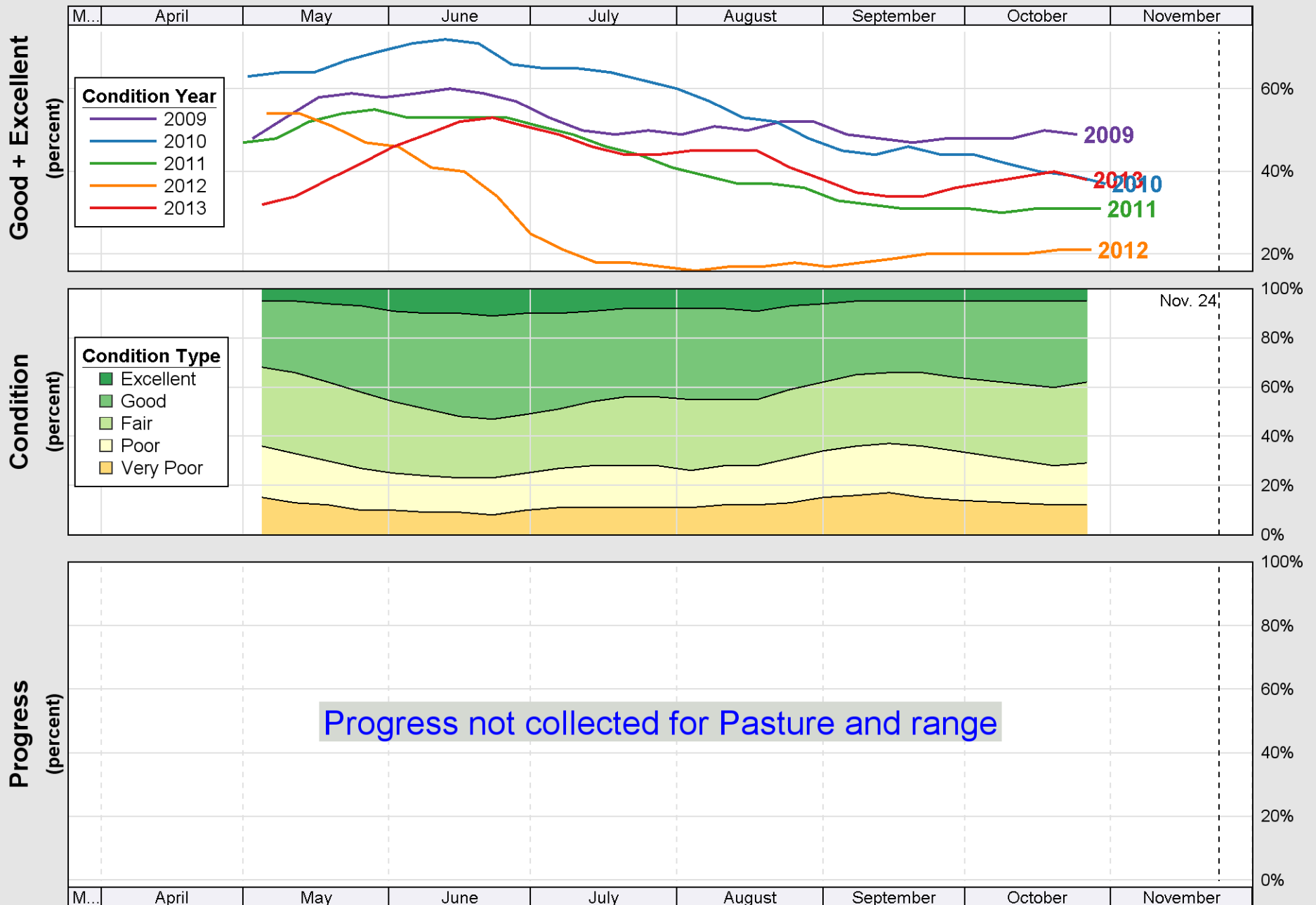


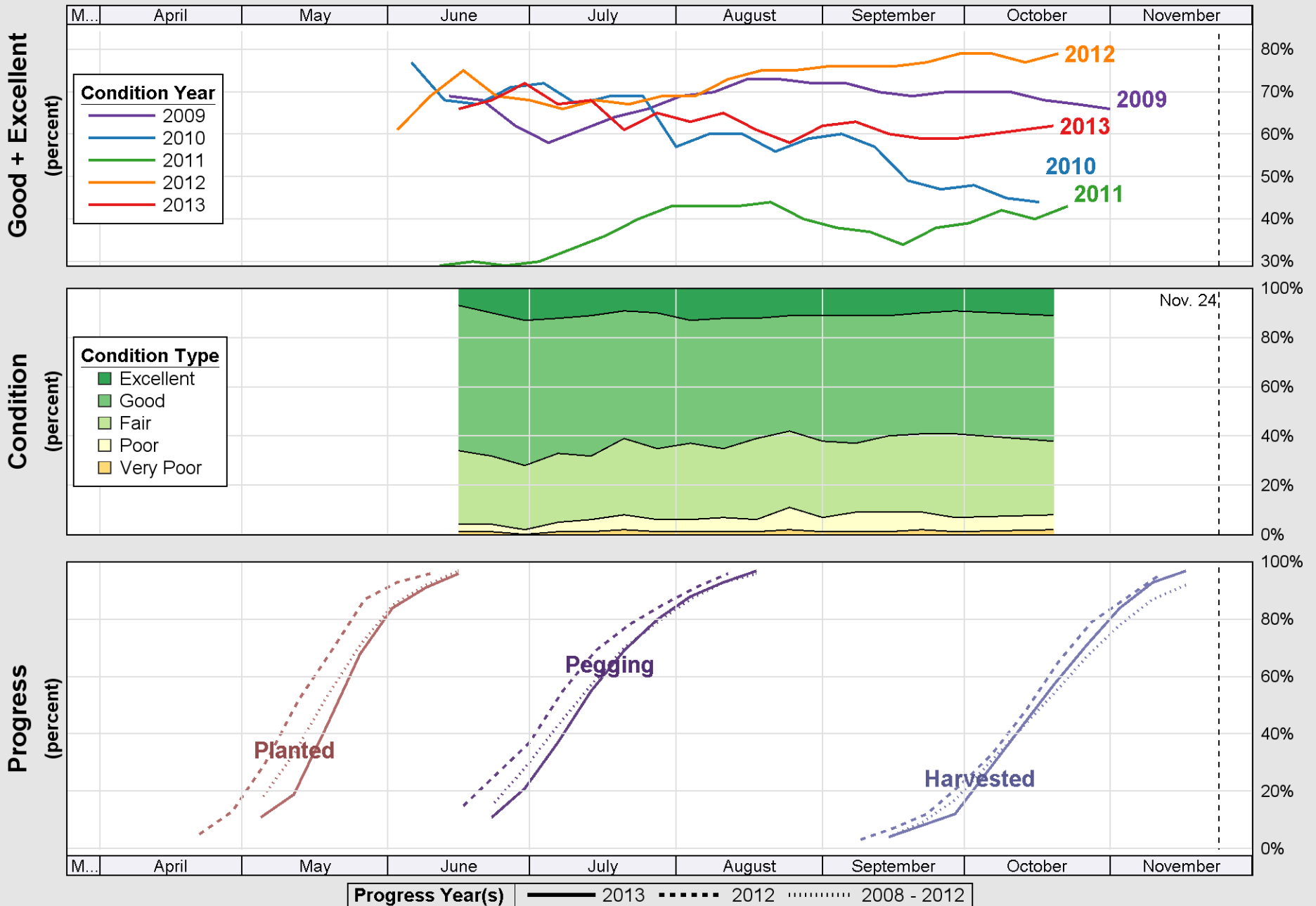
Source: National Agricultural Statistics Service (NASS), Crop Progress Report



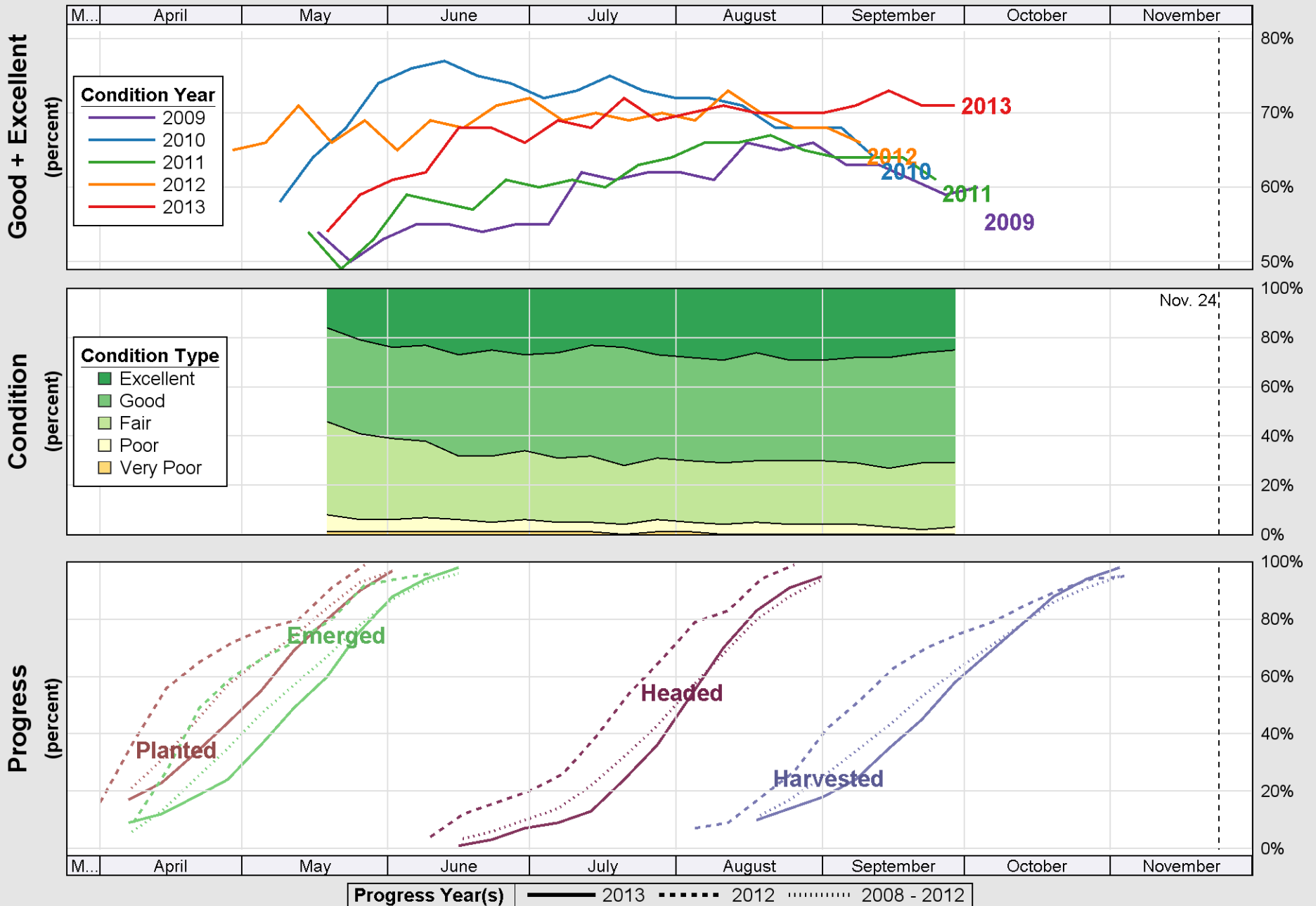
Source: National Agricultural Statistics Service (NASS), Crop Progress Report



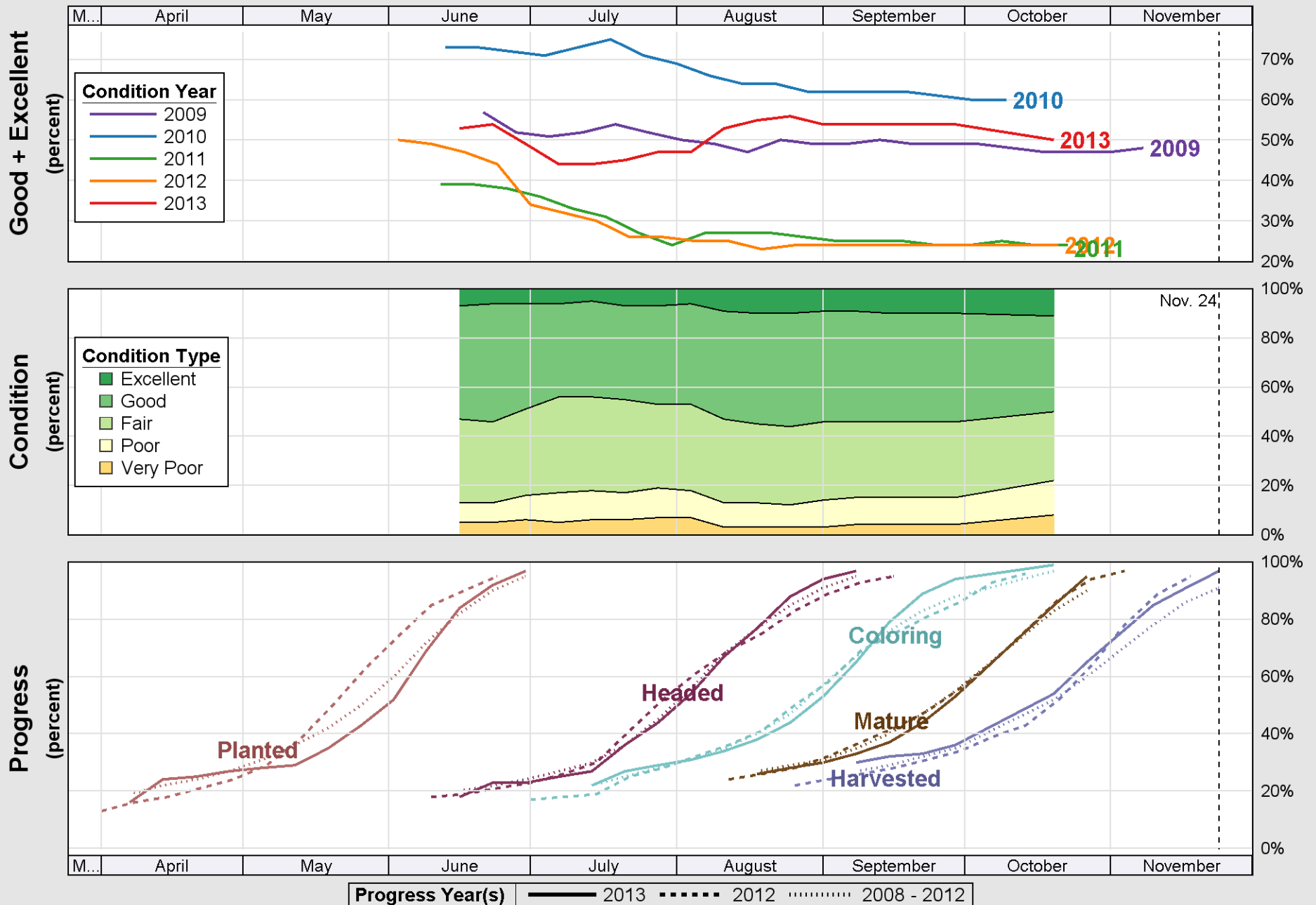




Source: National Agricultural Statistics Service (NASS), Crop Progress Report

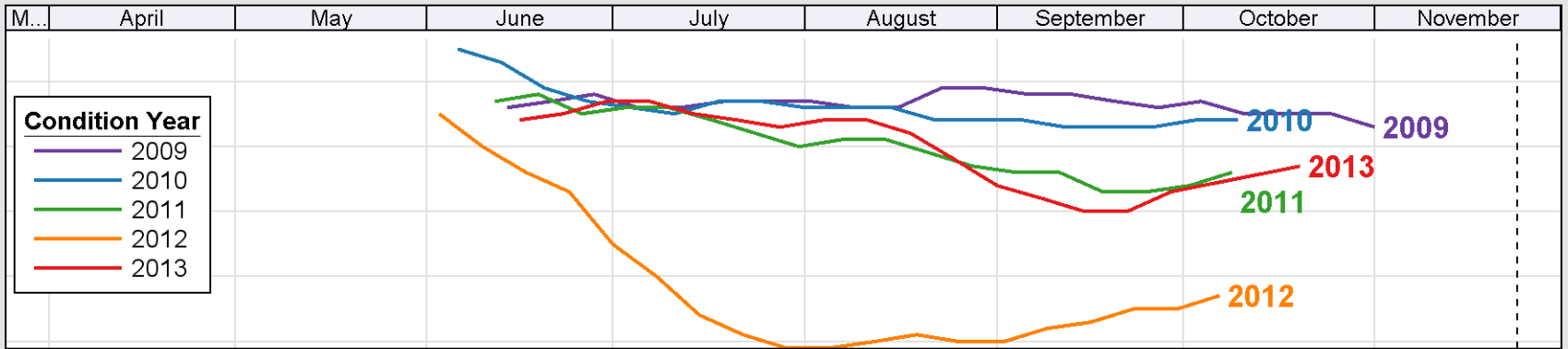


Source: National Agricultural Statistics Service (NASS), Crop Progress Report

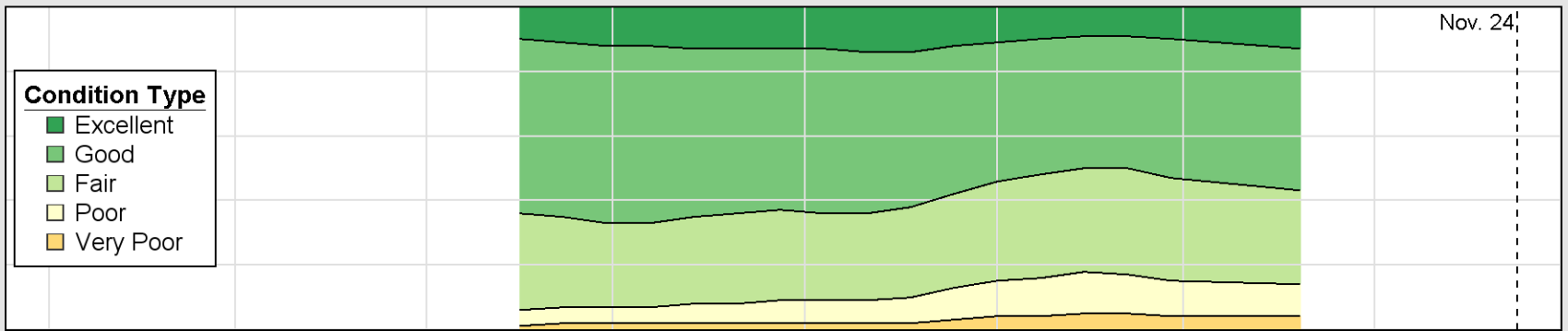


Source: National Agricultural Statistics Service (NASS), Crop Progress Report

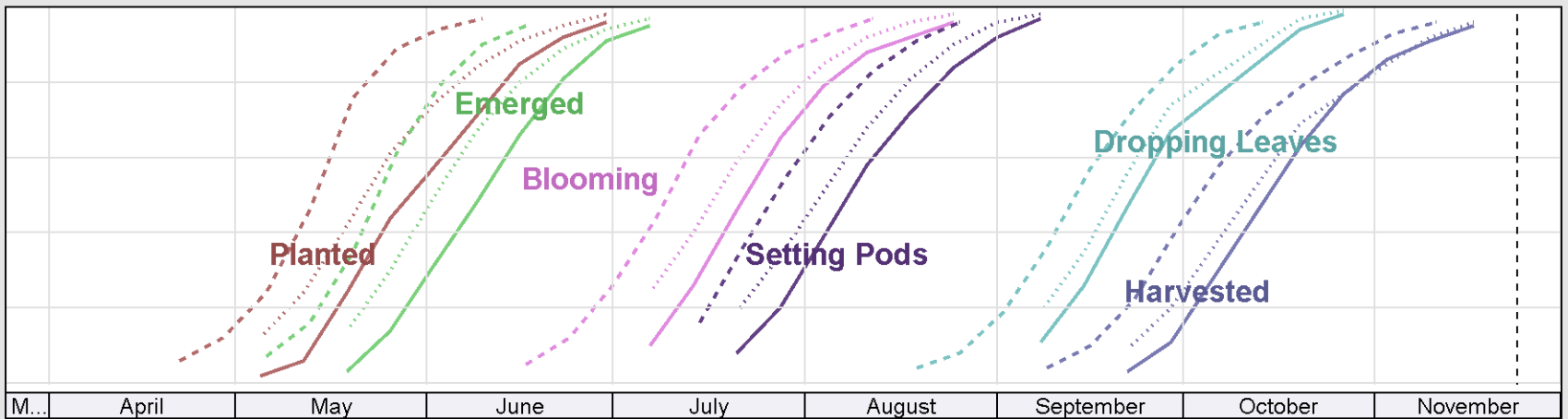
Good + Excellent
(percent)



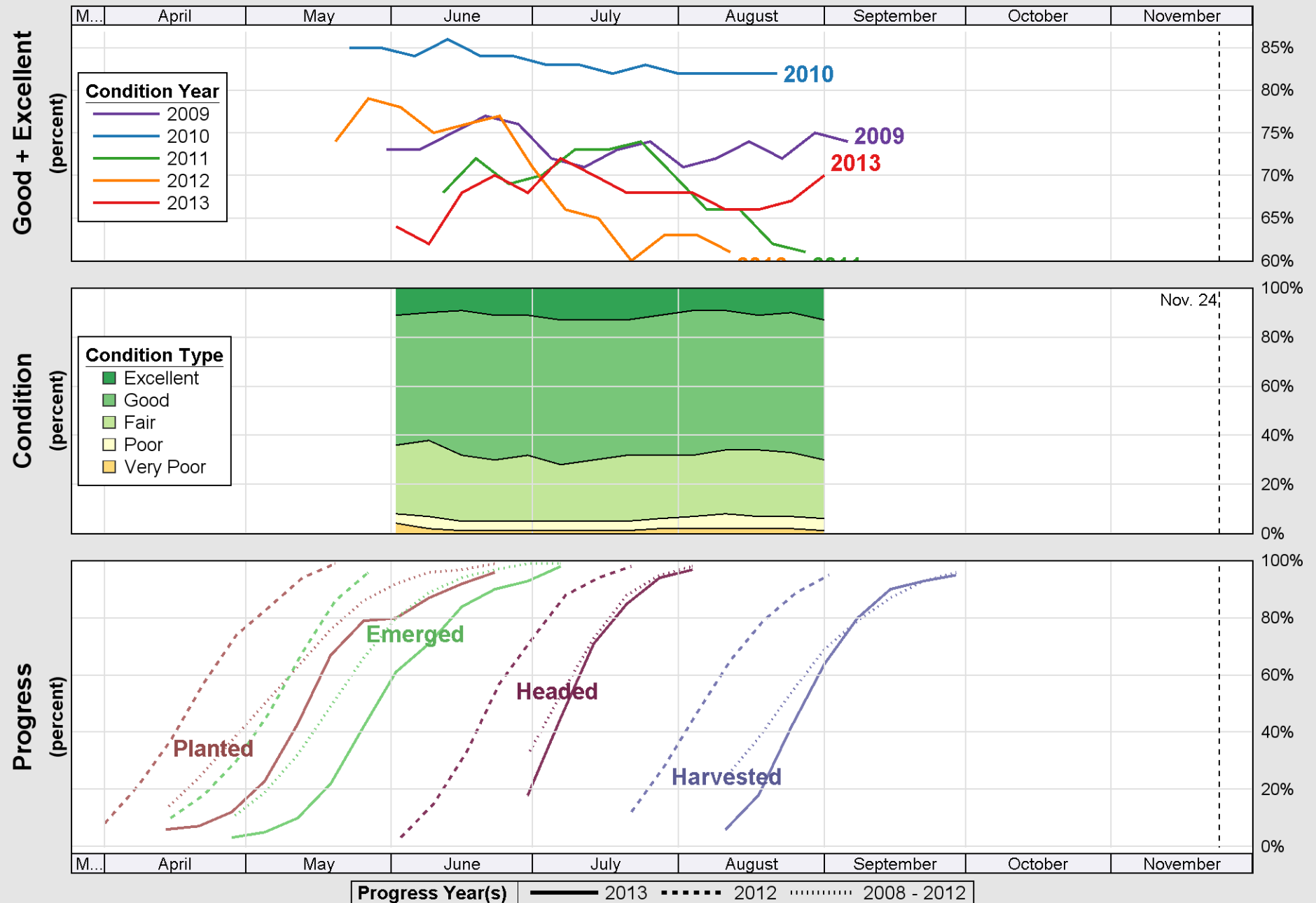
Condition
(percent)



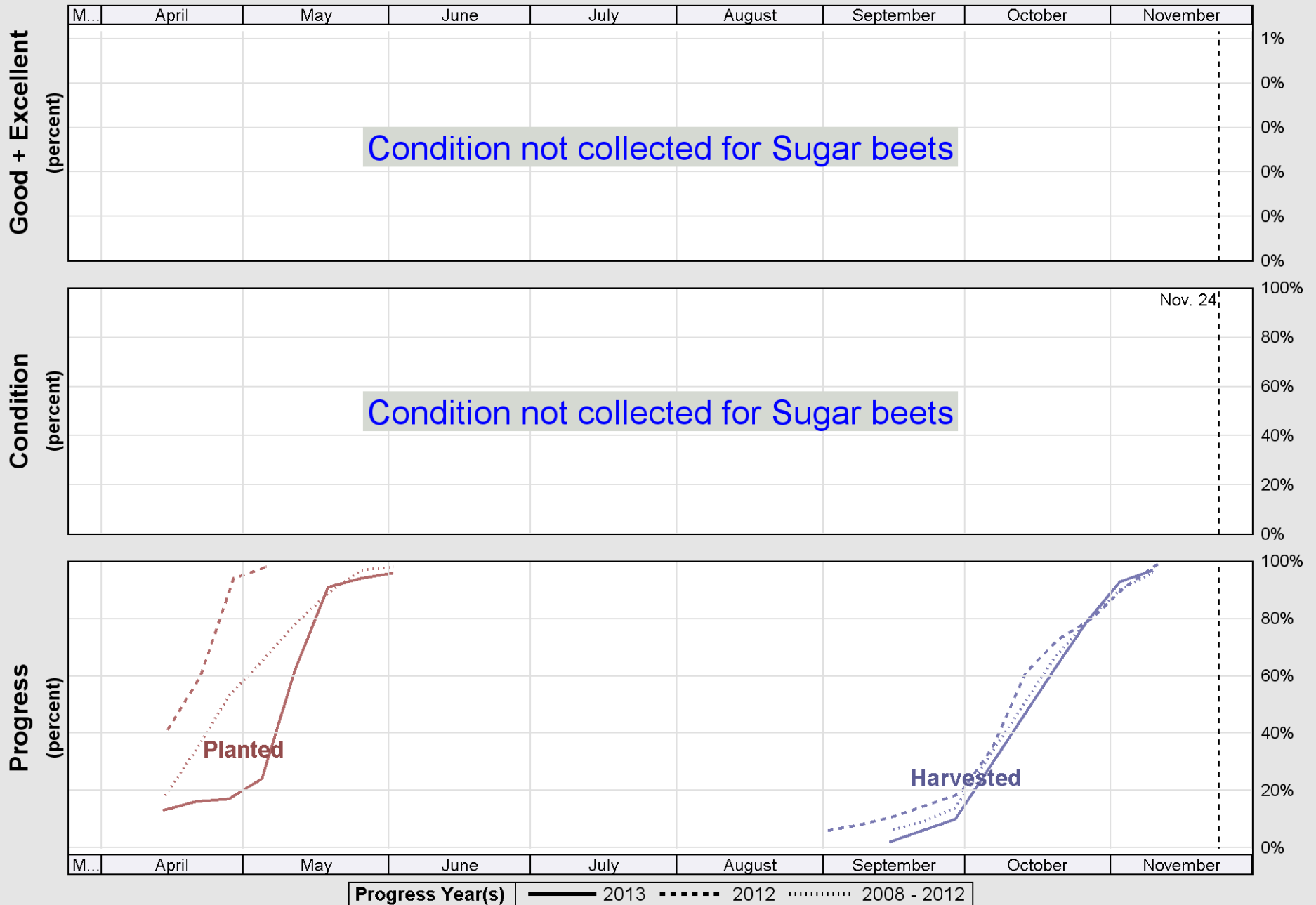
Progress
(percent)

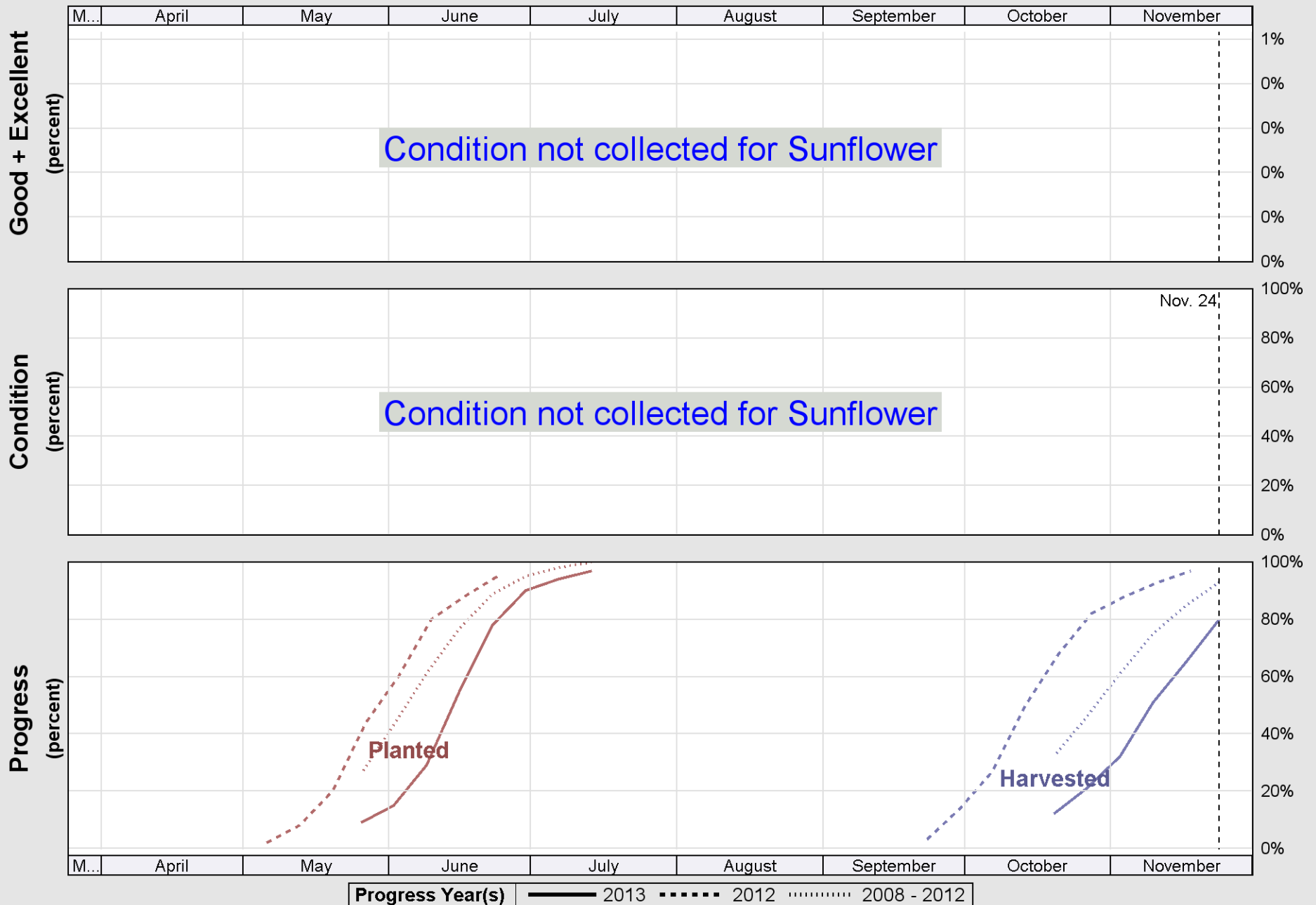


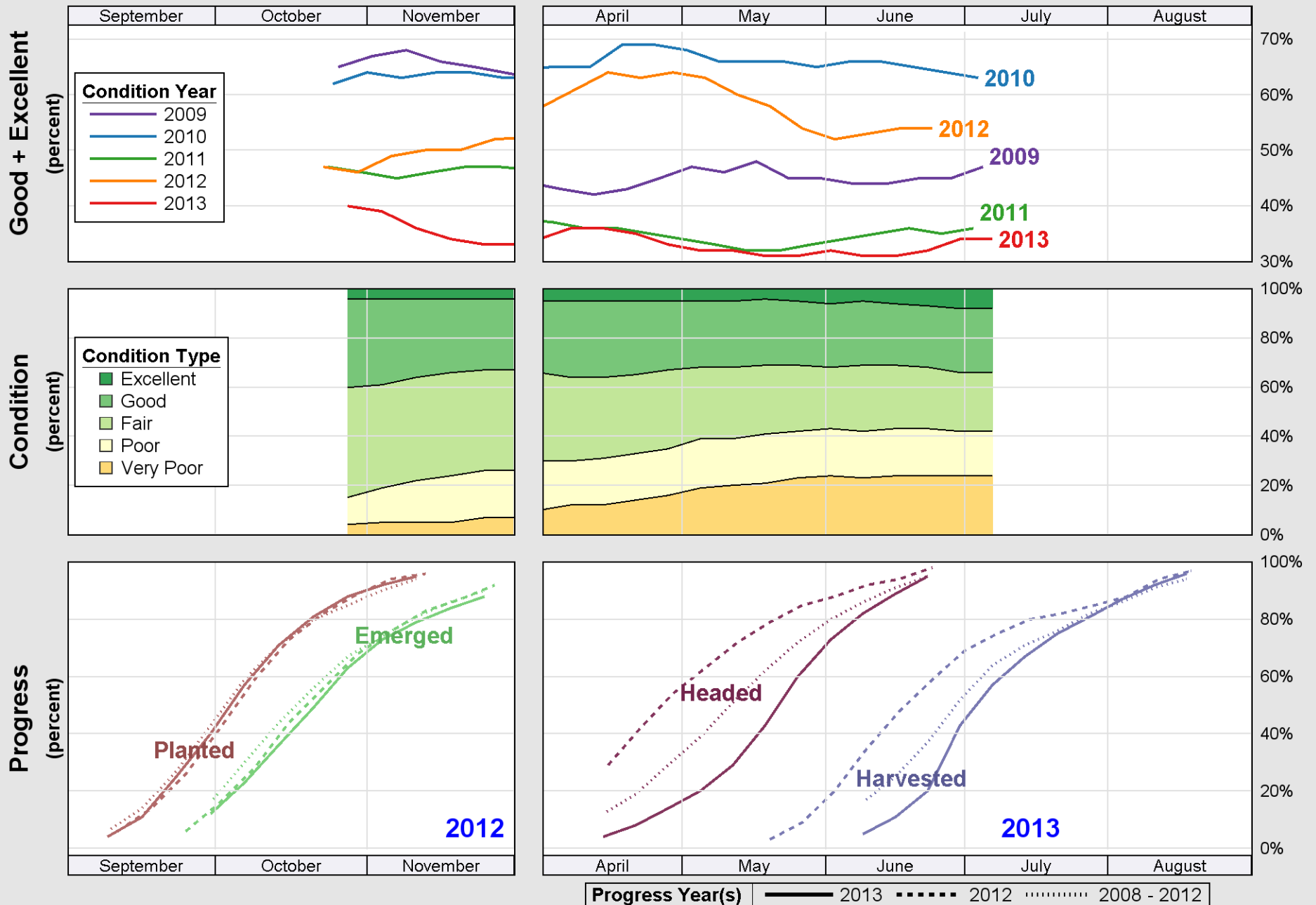
Progress Year(s) ——— 2013 ····· 2012 ······ 2008 - 2012



Source: National Agricultural Statistics Service (NASS), Crop Progress Report







Source: National Agricultural Statistics Service (NASS), Crop Progress Report