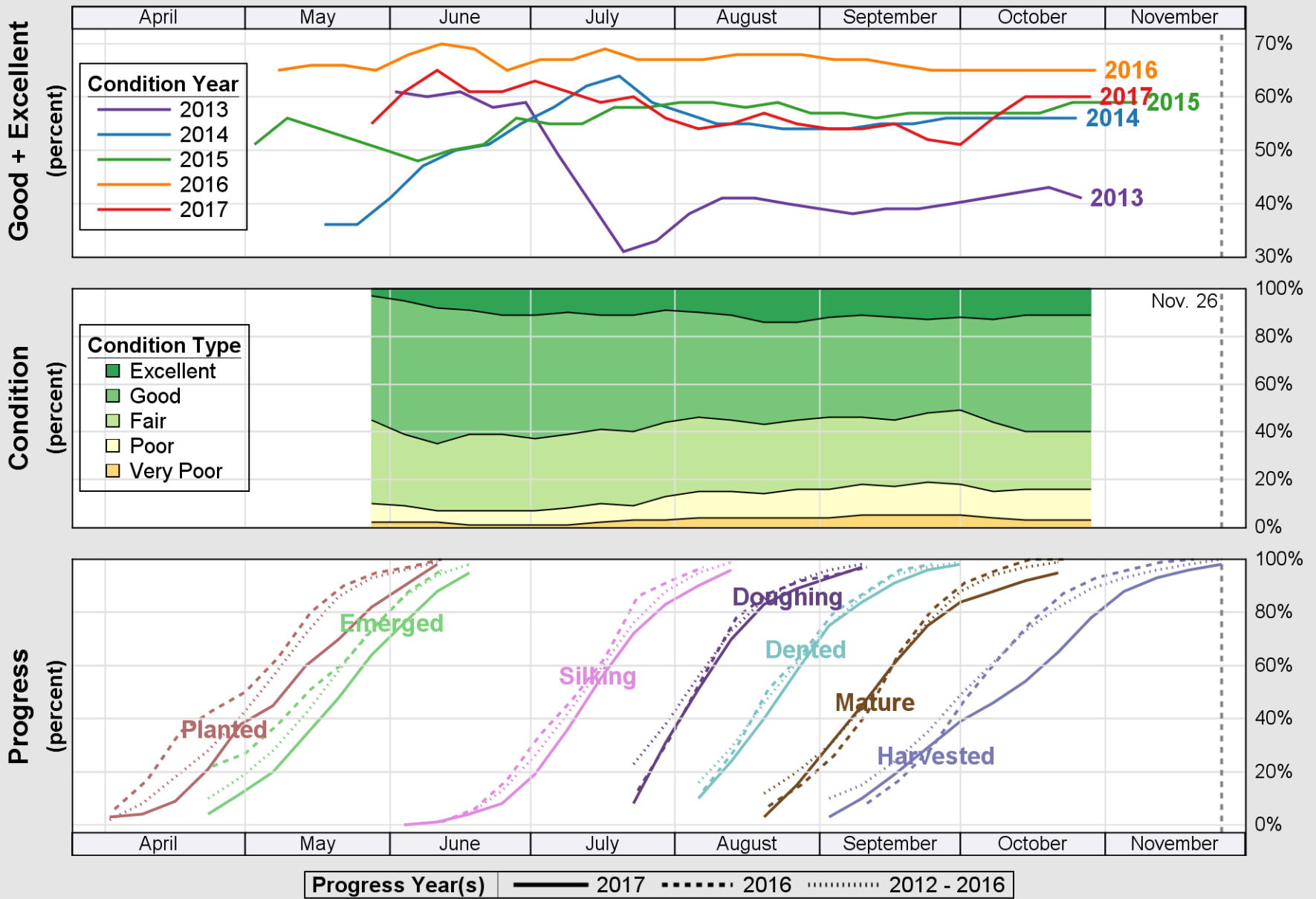


USDA

# Crop Progress and Condition: Corn in Kansas , 2017

NASS

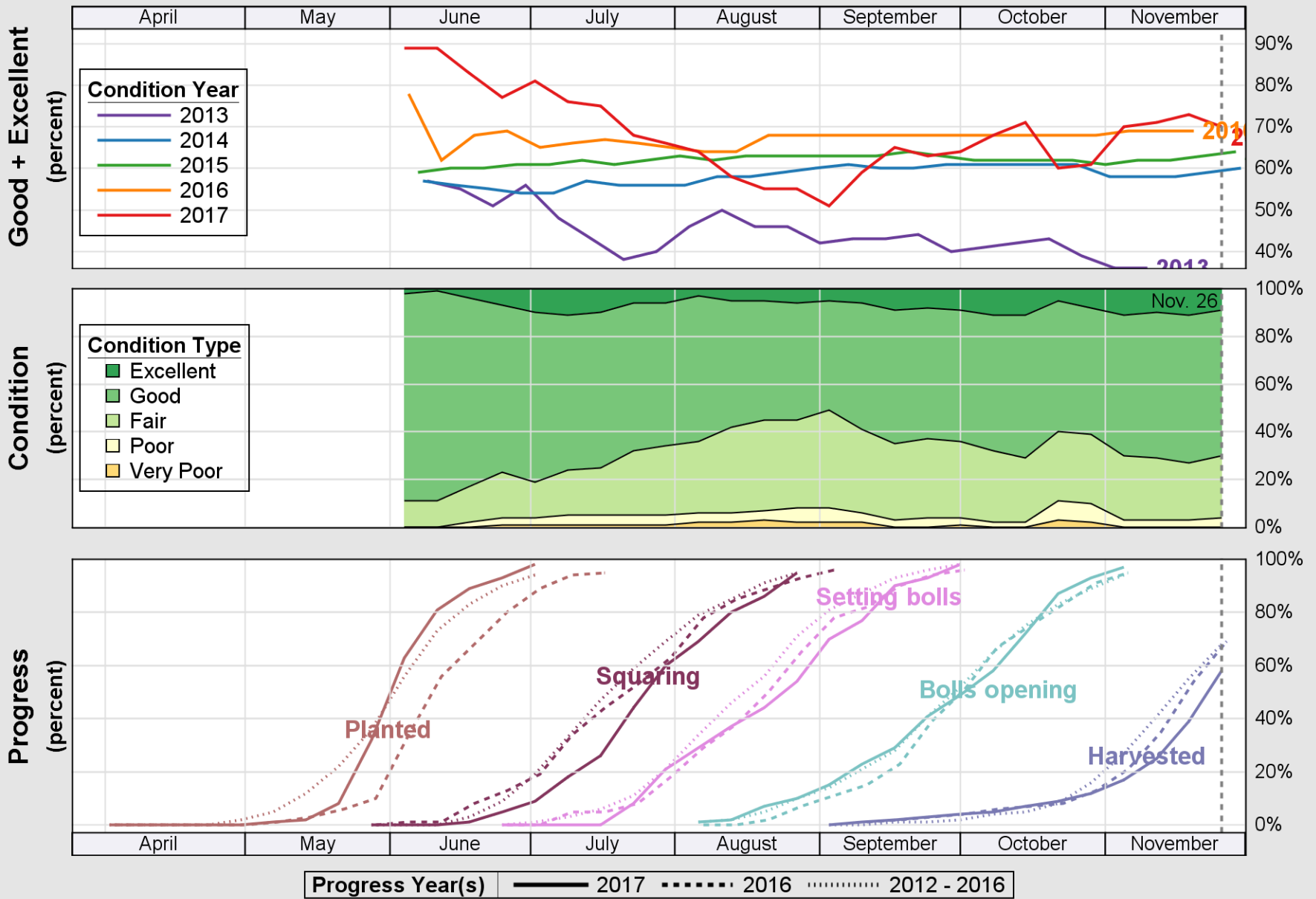


Source: National Agricultural Statistics Service (NASS), Crop Progress Report

USDA

# Crop Progress and Condition: Cotton in Kansas , 2017

NASS

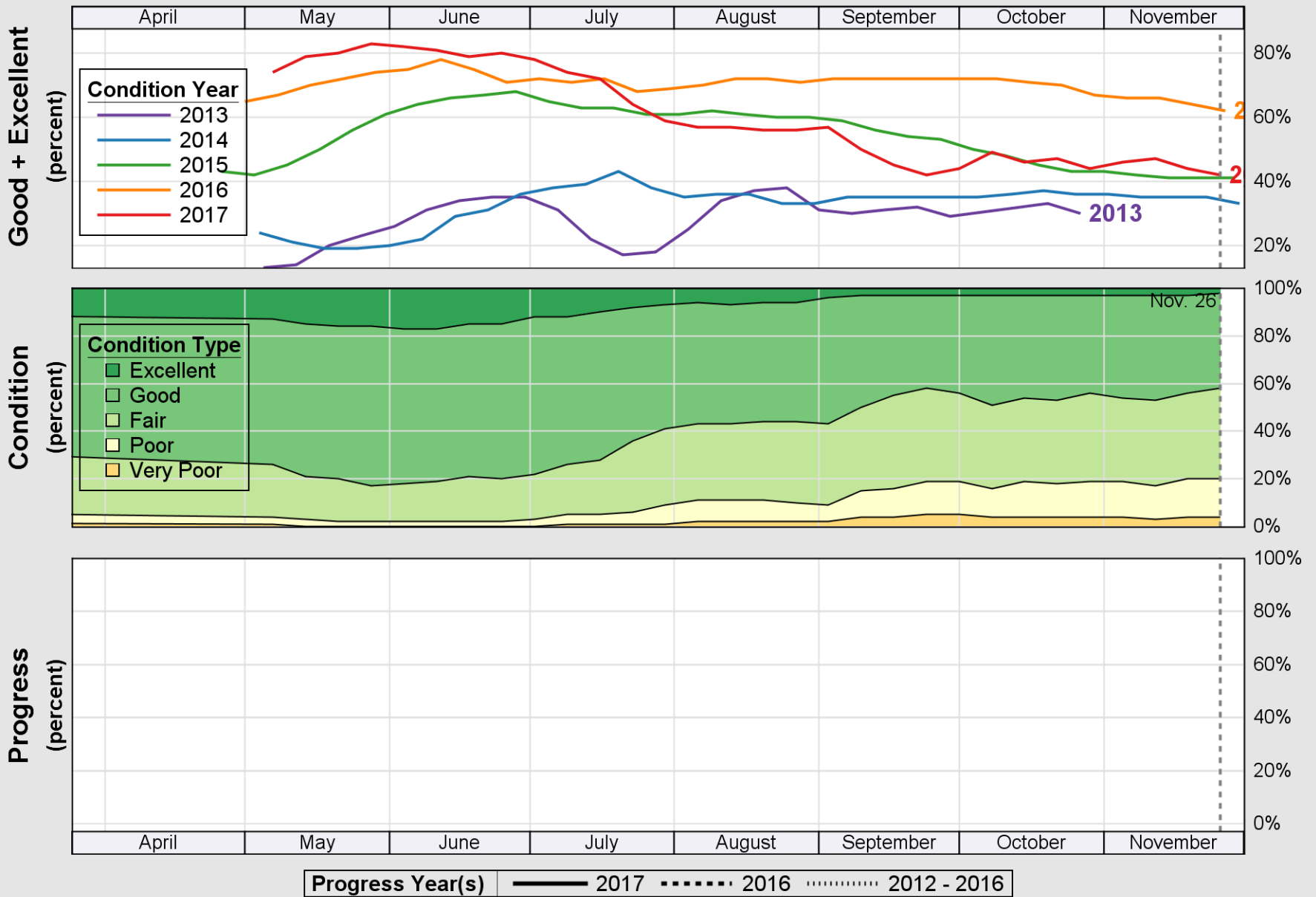


Source: National Agricultural Statistics Service (NASS), Crop Progress Report

USDA

# Crop Progress and Condition: Pasture and Range in Kansas , 2017

NASS

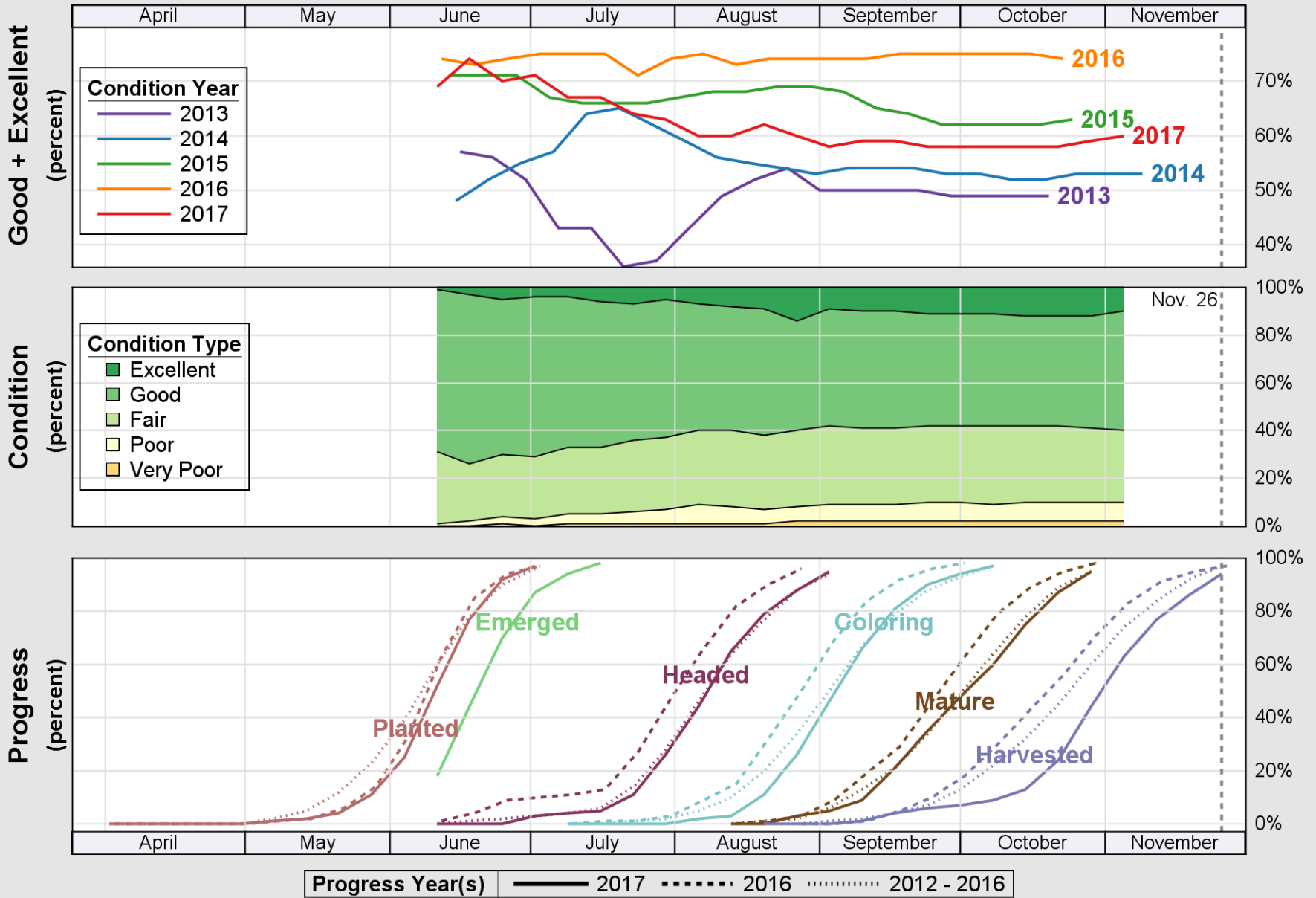


Source: National Agricultural Statistics Service (NASS), Crop Progress Report

USDA

# Crop Progress and Condition: Sorghum in Kansas , 2017

NASS

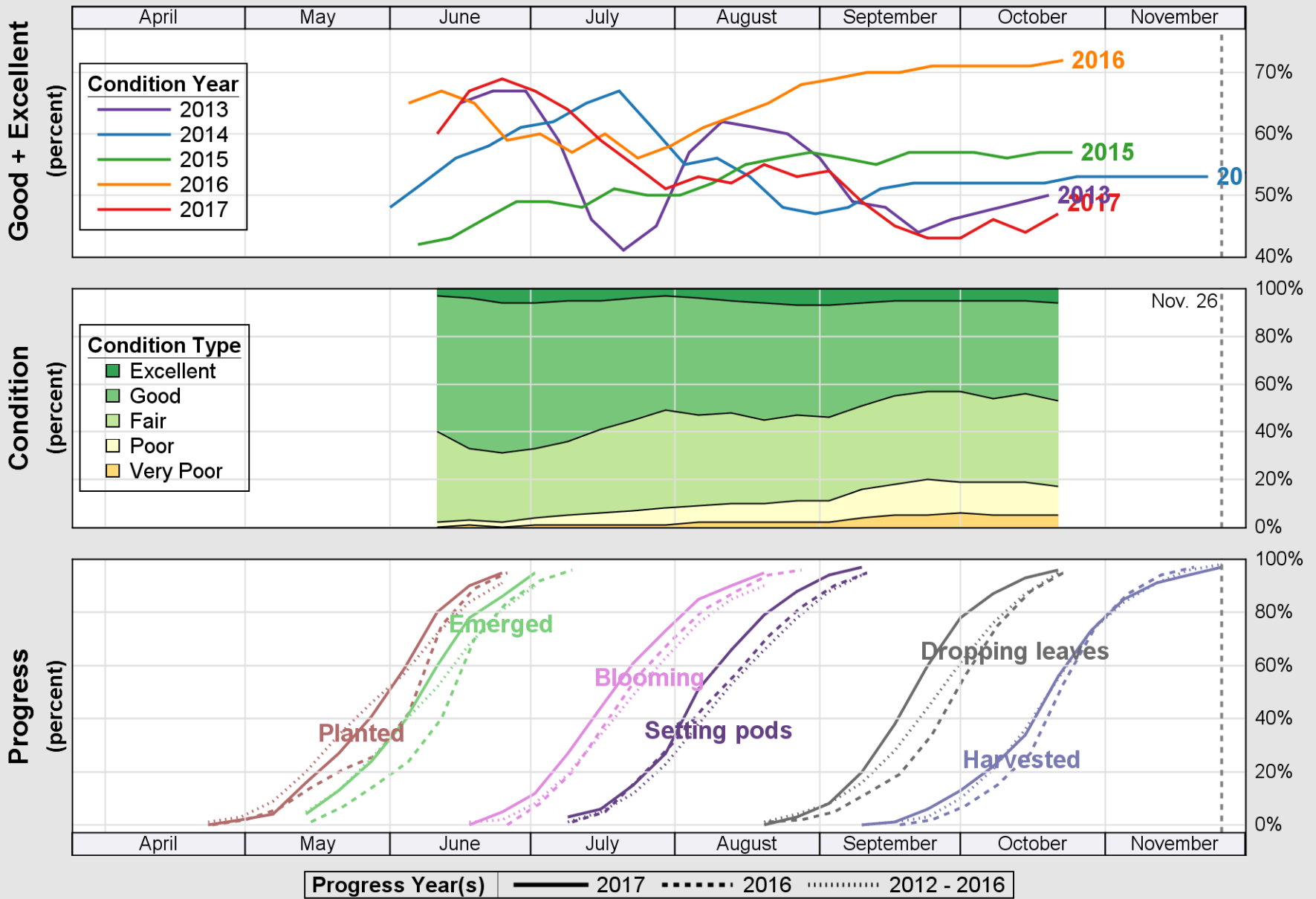


Source: National Agricultural Statistics Service (NASS), Crop Progress Report

USDA

# Crop Progress and Condition: Soybeans in Kansas , 2017

NASS

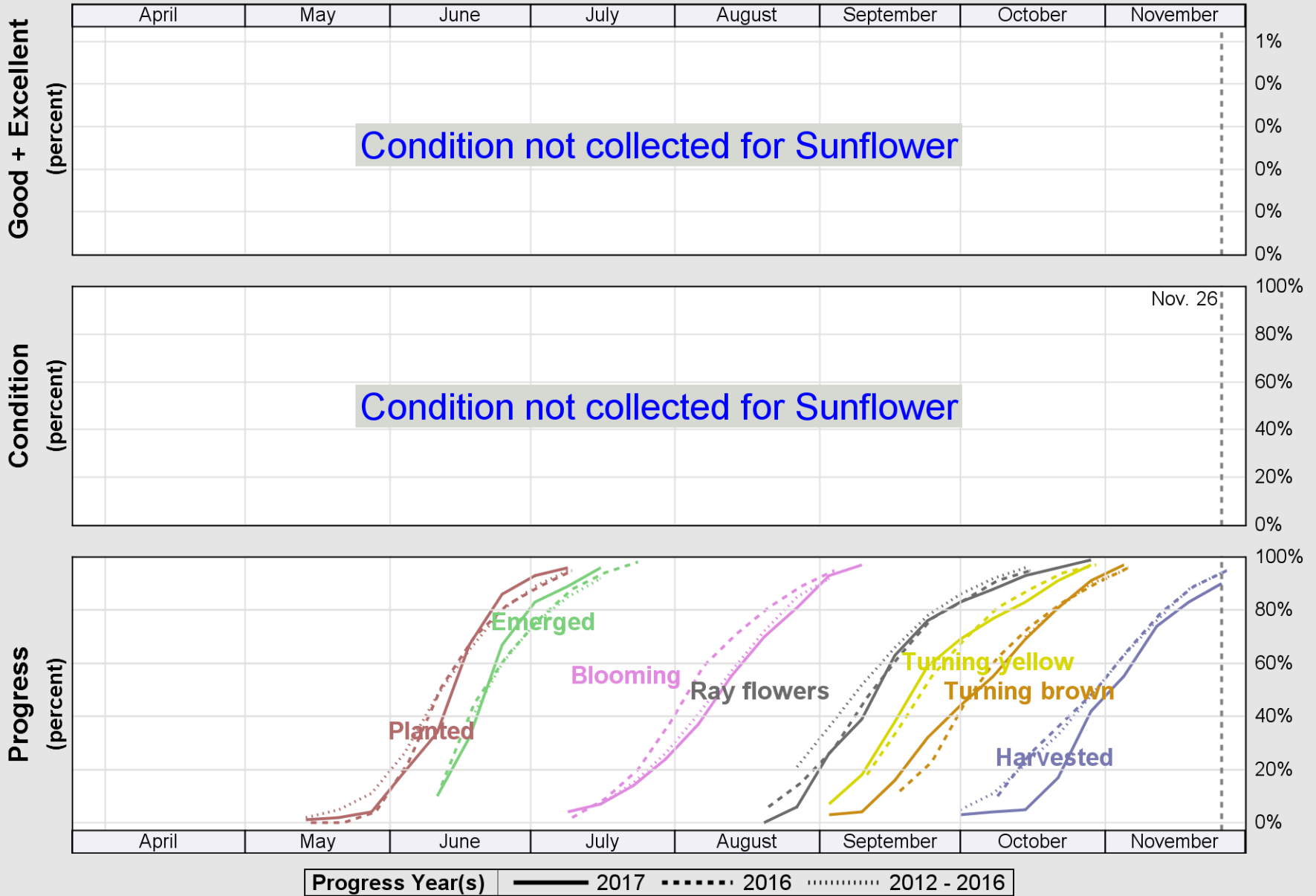


Source: National Agricultural Statistics Service (NASS), Crop Progress Report

USDA

### Crop Progress and Condition: Sunflower in Kansas , 2017

NASS

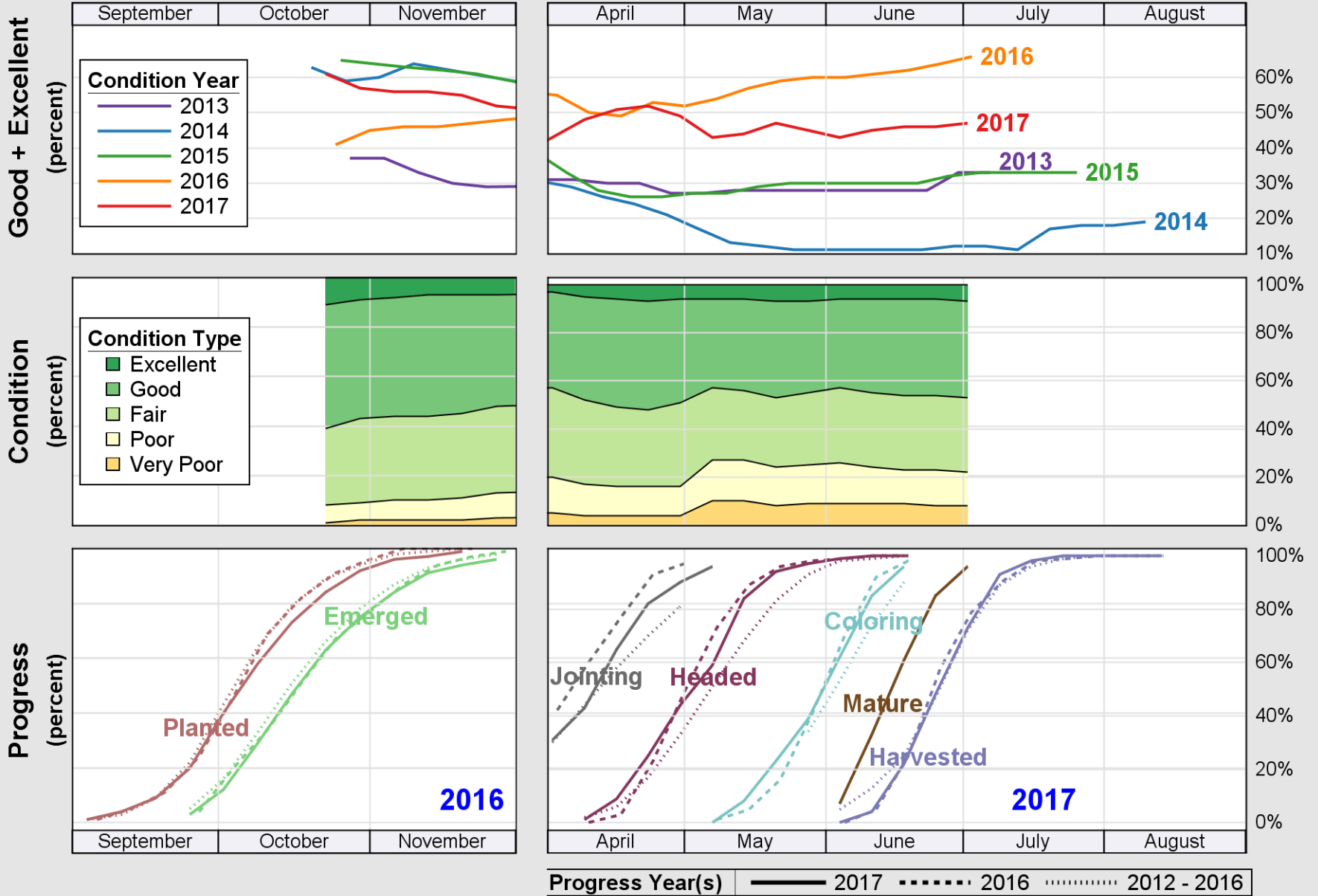


Source: National Agricultural Statistics Service (NASS), Crop Progress Report

USDA

# Crop Progress and Condition: Winter Wheat in Kansas , 2017

NASS



Source: National Agricultural Statistics Service (NASS), Crop Progress Report