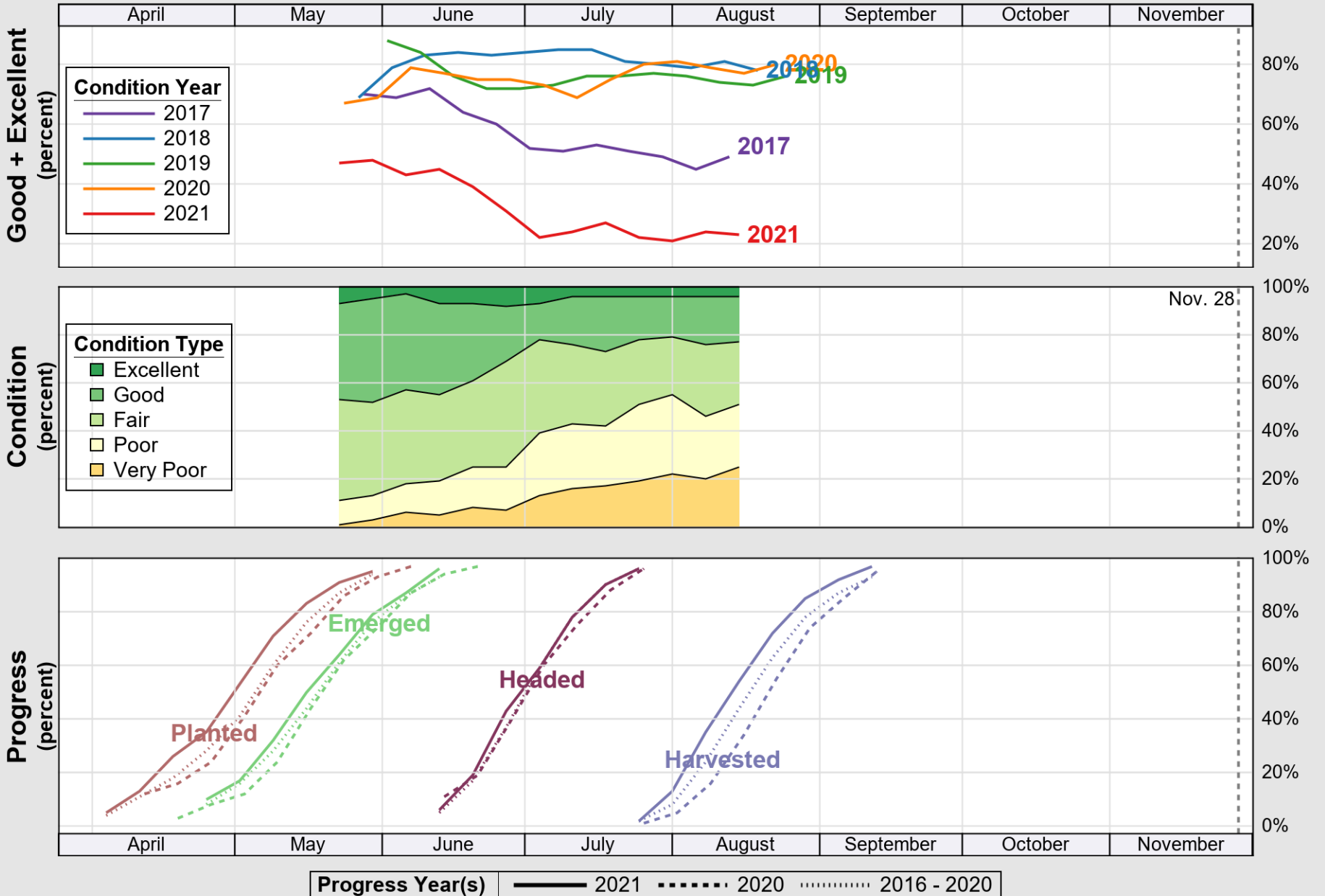


USDA

Crop Progress and Condition: Barley in United States , 2021

NASS

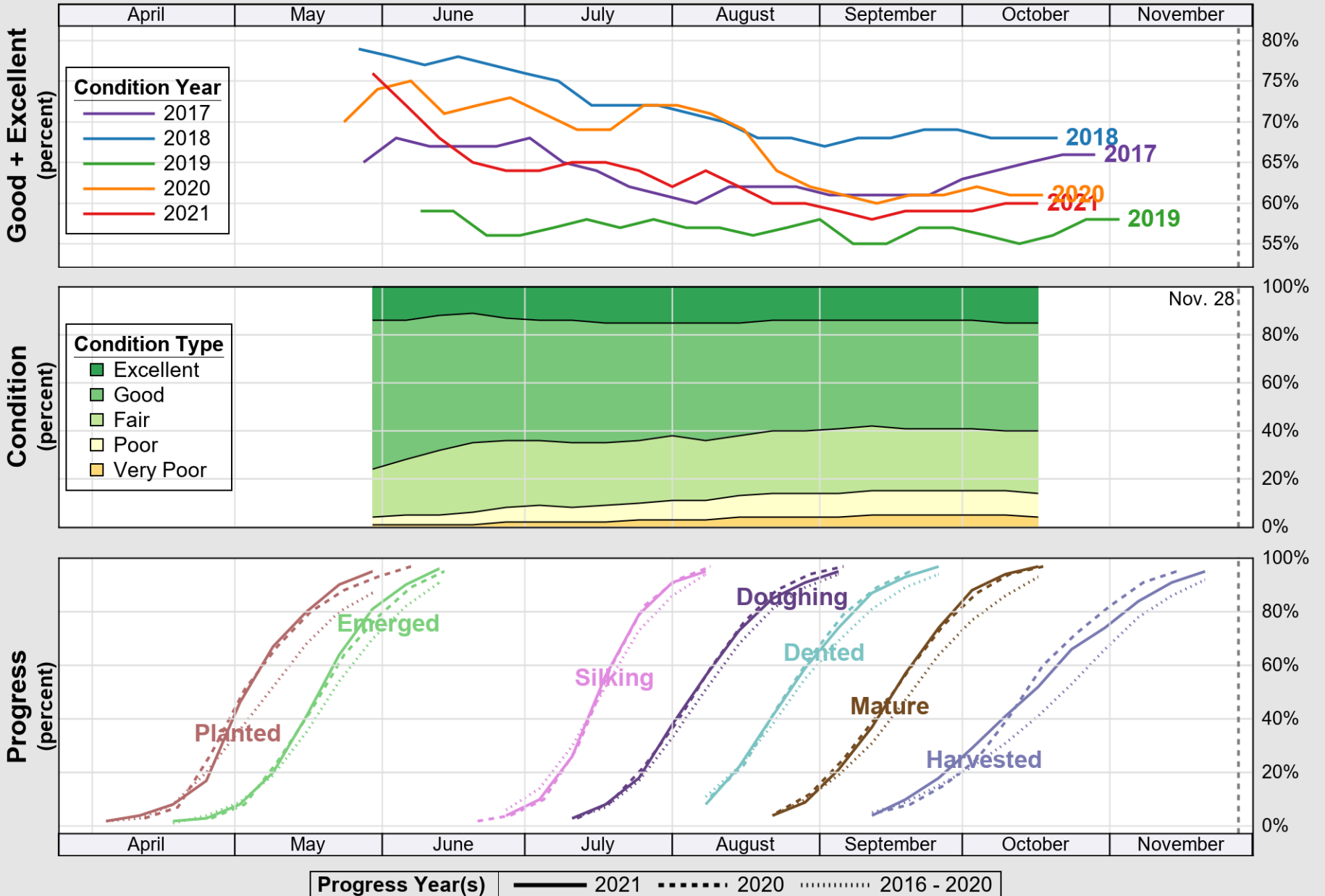


Source: National Agricultural Statistics Service (NASS), Crop Progress Report

USDA

Crop Progress and Condition: Corn in United States , 2021

NASS

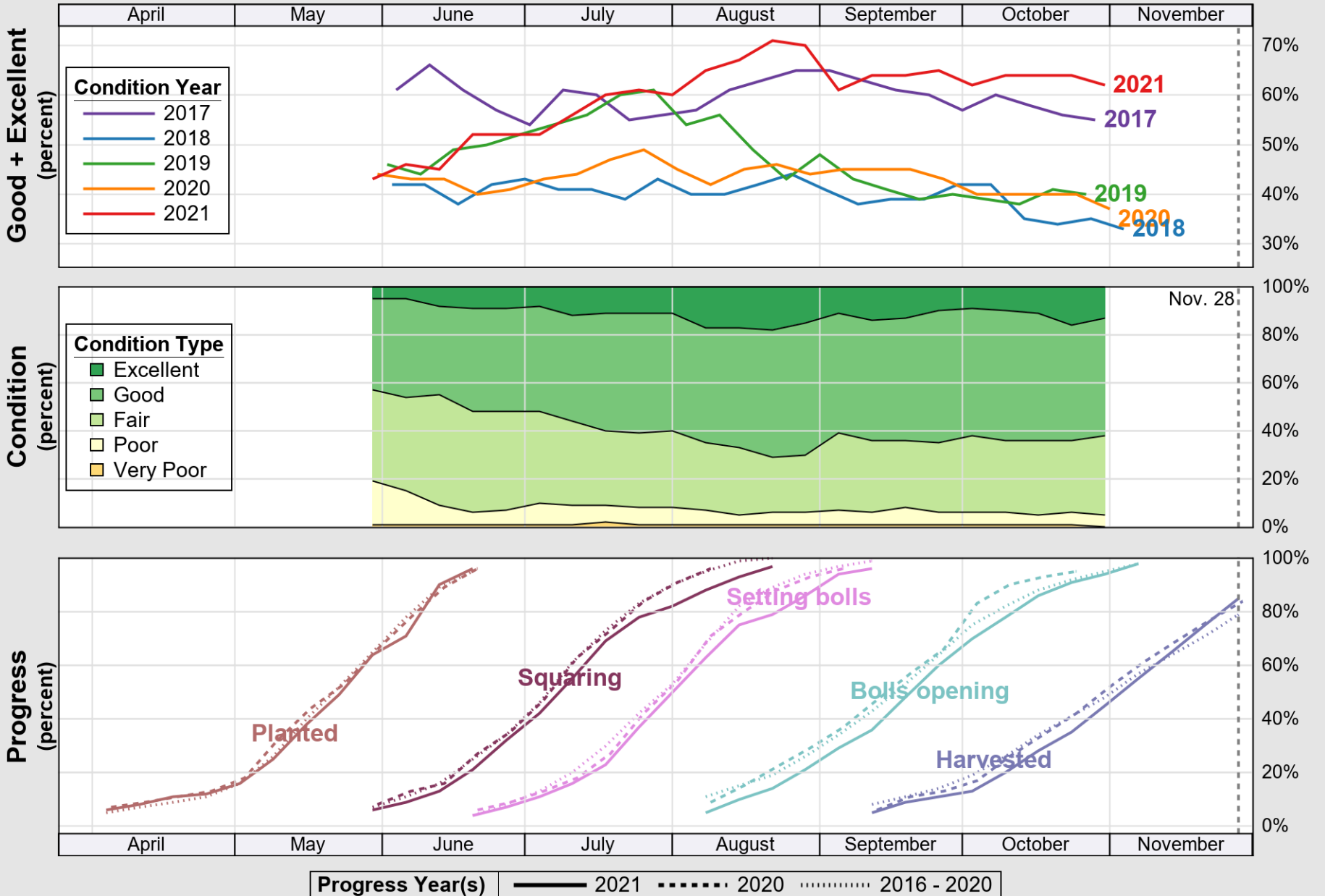


Source: National Agricultural Statistics Service (NASS), Crop Progress Report

USDA

Crop Progress and Condition: Cotton in United States , 2021

NASS

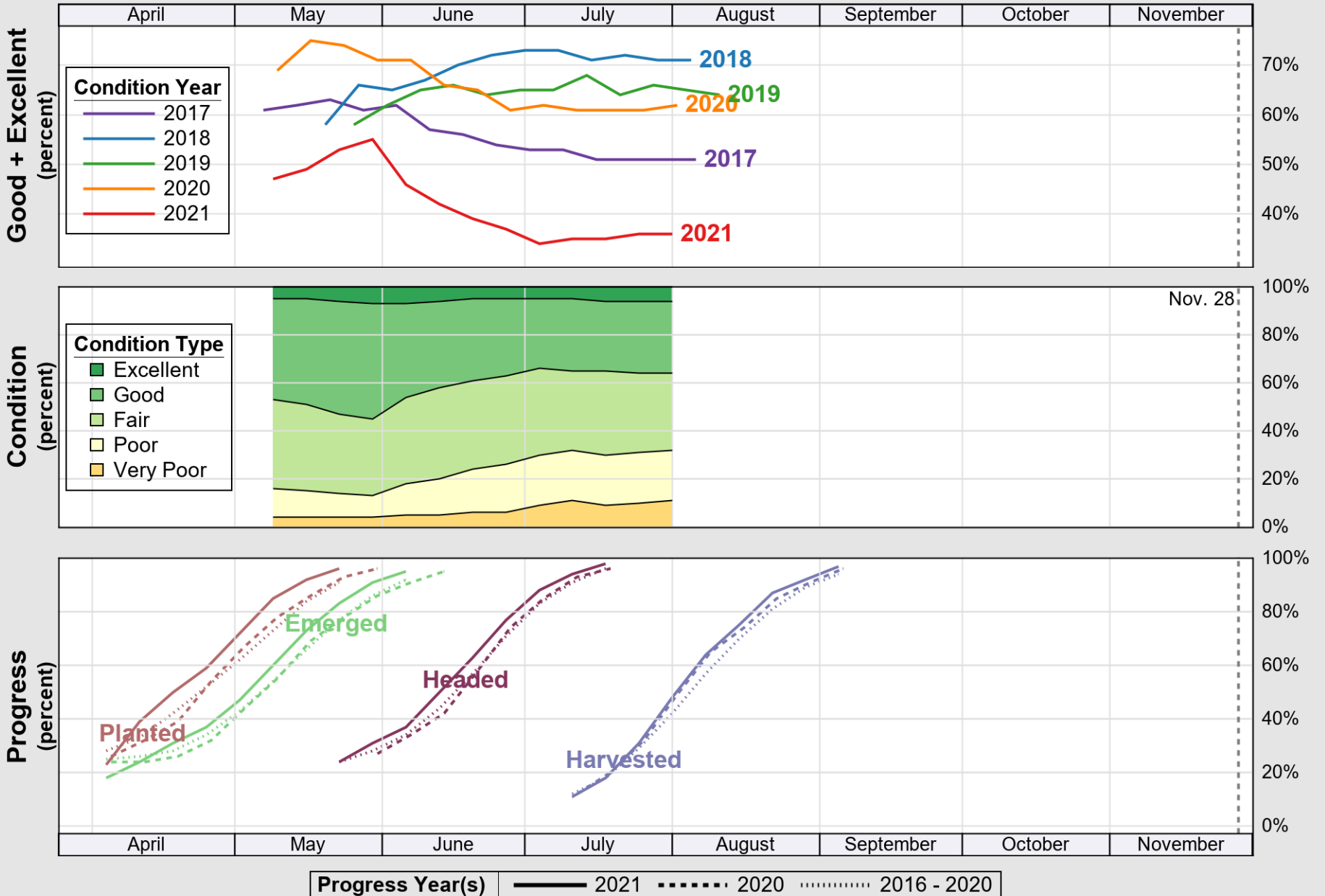


Source: National Agricultural Statistics Service (NASS), Crop Progress Report

USDA

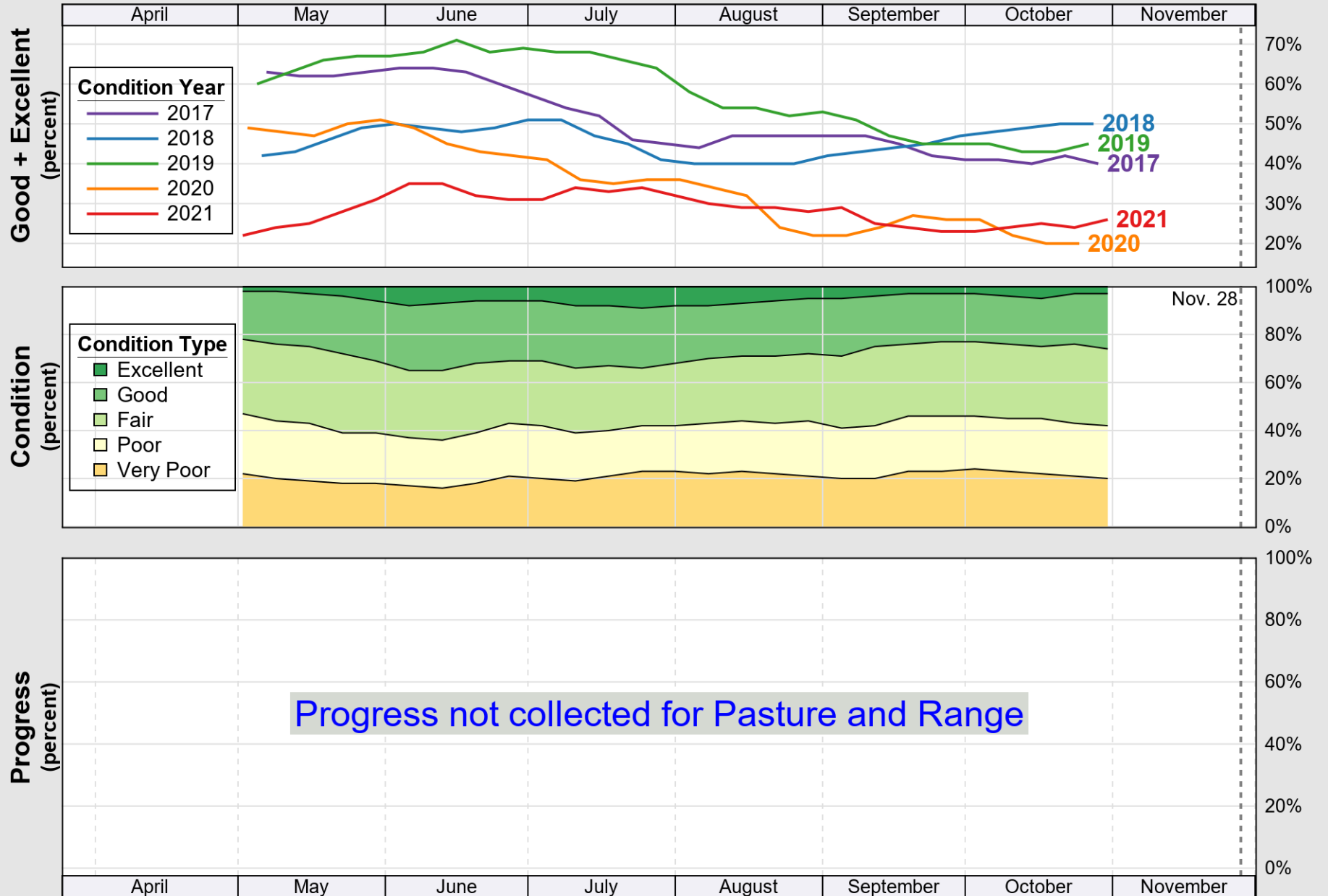
Crop Progress and Condition: Oats in United States , 2021

NASS



Source: National Agricultural Statistics Service (NASS), Crop Progress Report

USDA Crop Progress and Condition: Pasture and Range in United States , 2021 **NASS**

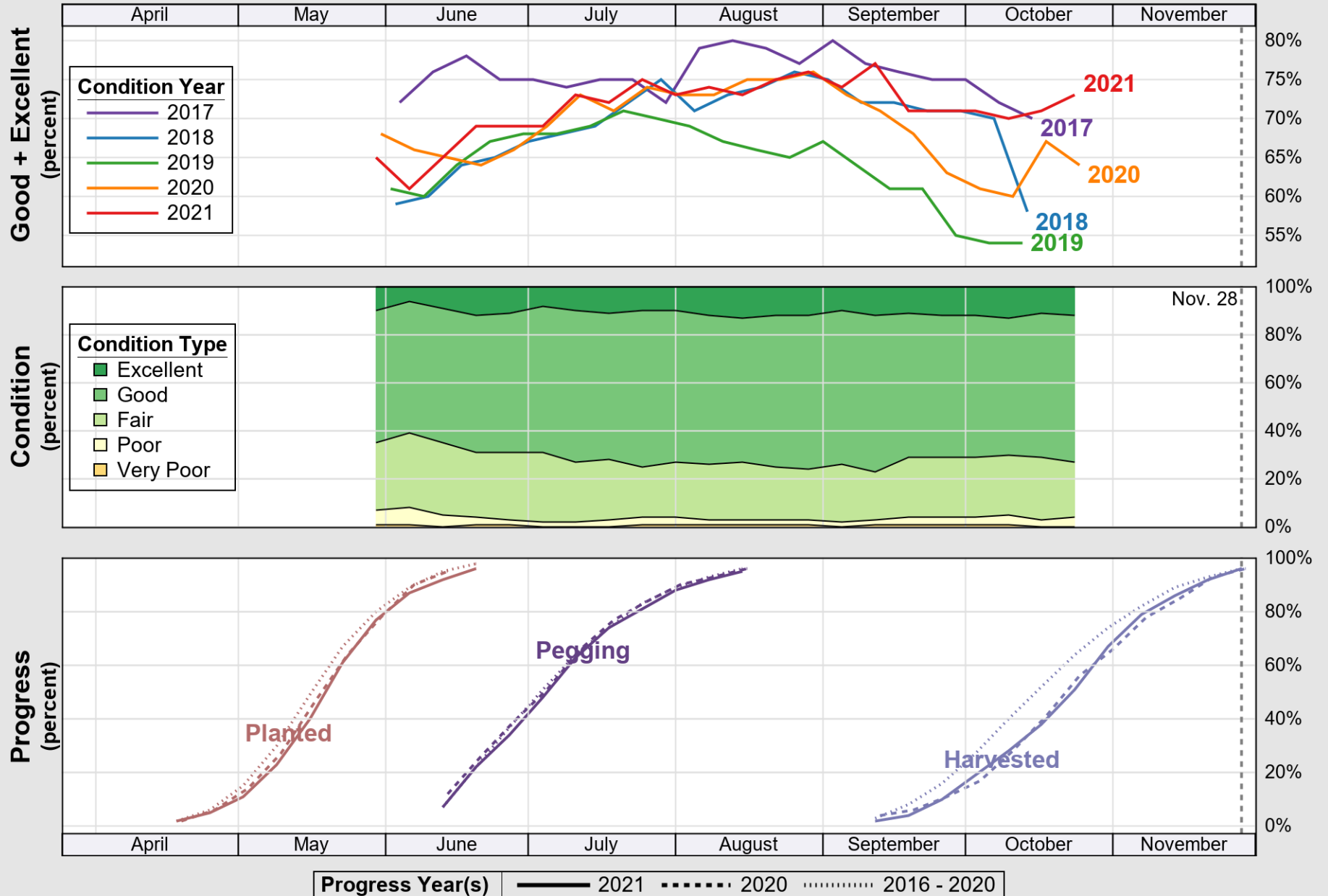


Source: National Agricultural Statistics Service (NASS), Crop Progress Report

USDA

Crop Progress and Condition: Peanuts in United States , 2021

NASS

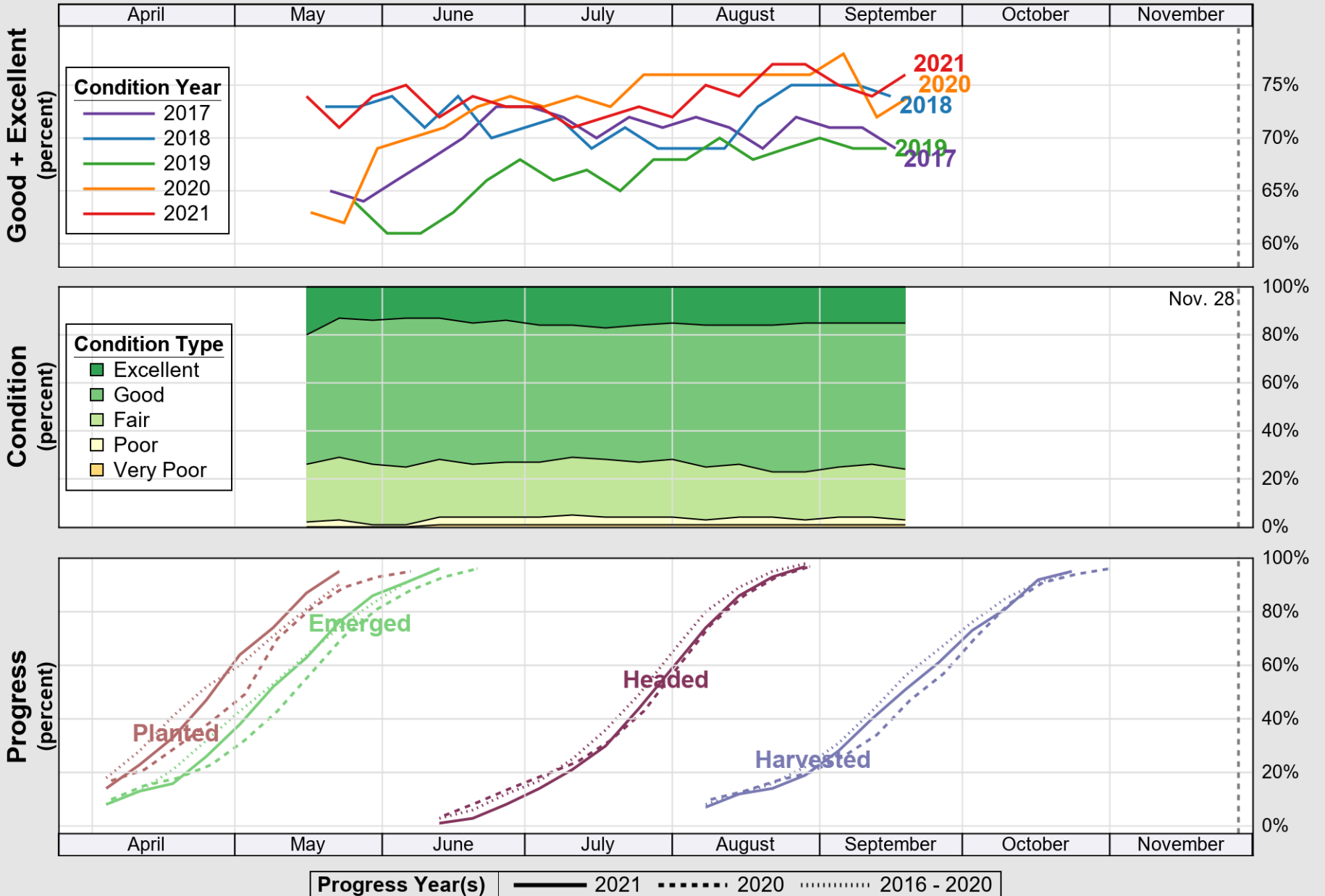


Source: National Agricultural Statistics Service (NASS), Crop Progress Report

USDA

Crop Progress and Condition: Rice in United States , 2021

NASS

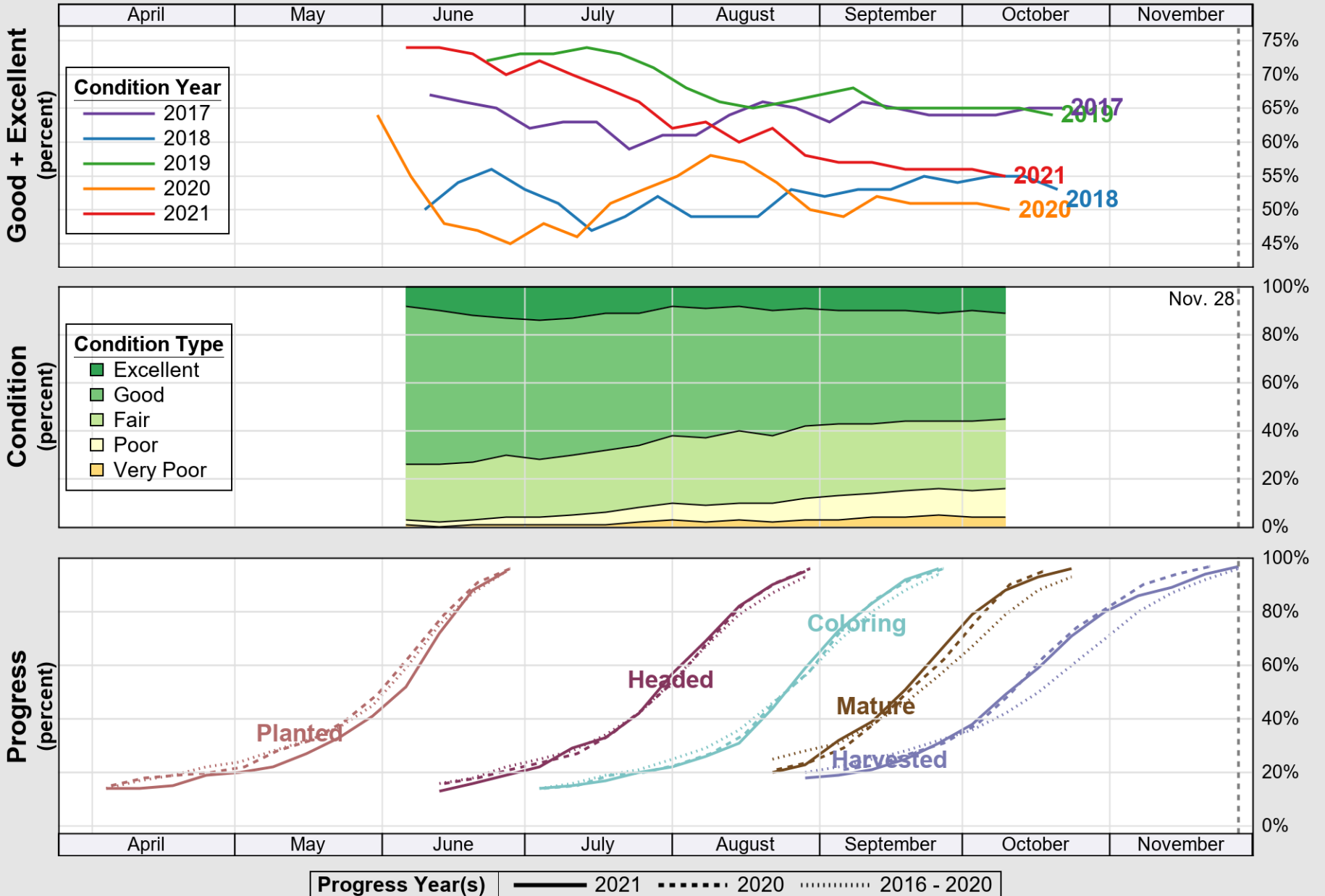


Source: National Agricultural Statistics Service (NASS), Crop Progress Report

USDA

Crop Progress and Condition: Sorghum in United States , 2021

NASS

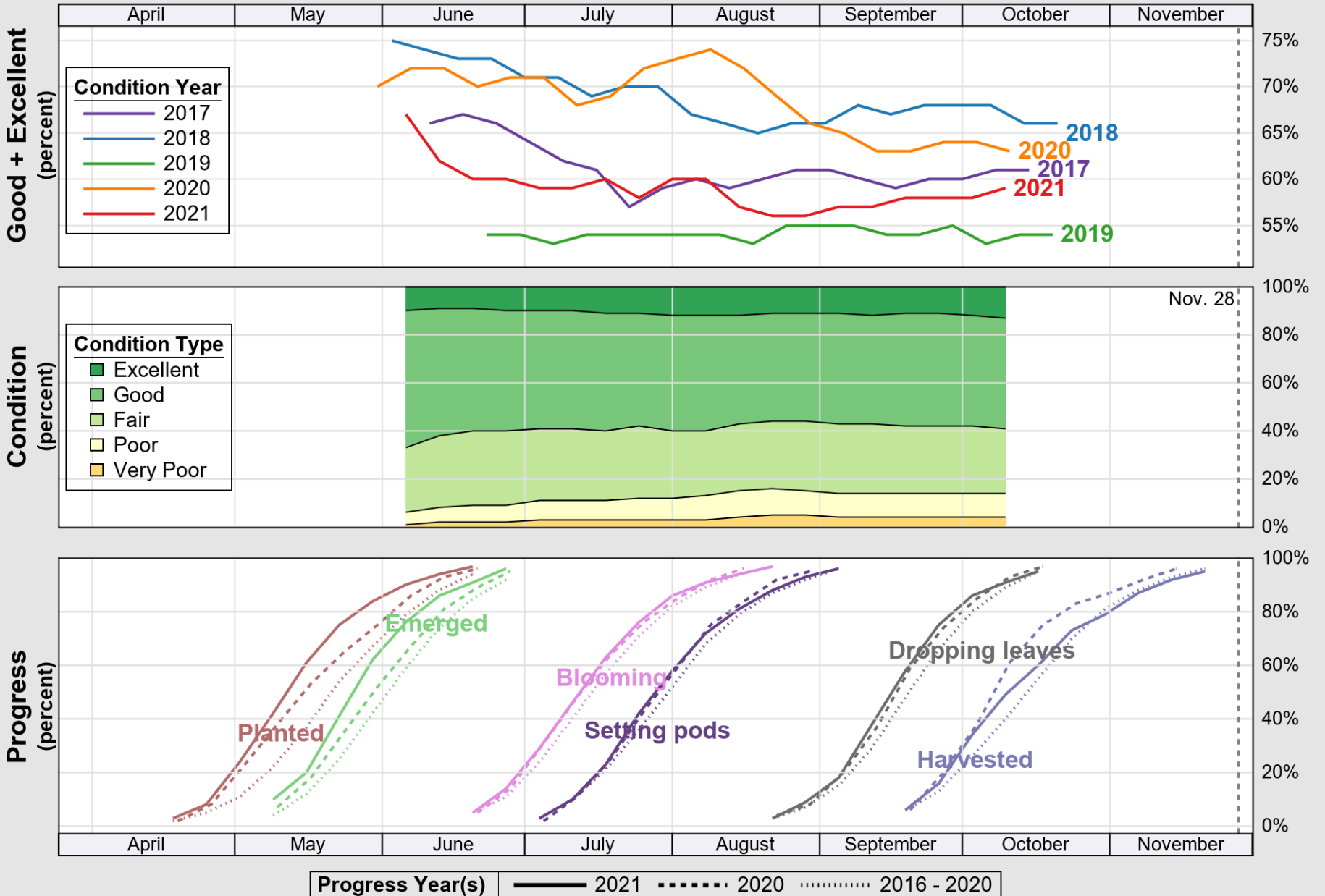


Source: National Agricultural Statistics Service (NASS), Crop Progress Report

USDA

Crop Progress and Condition: Soybeans in United States , 2021

NASS

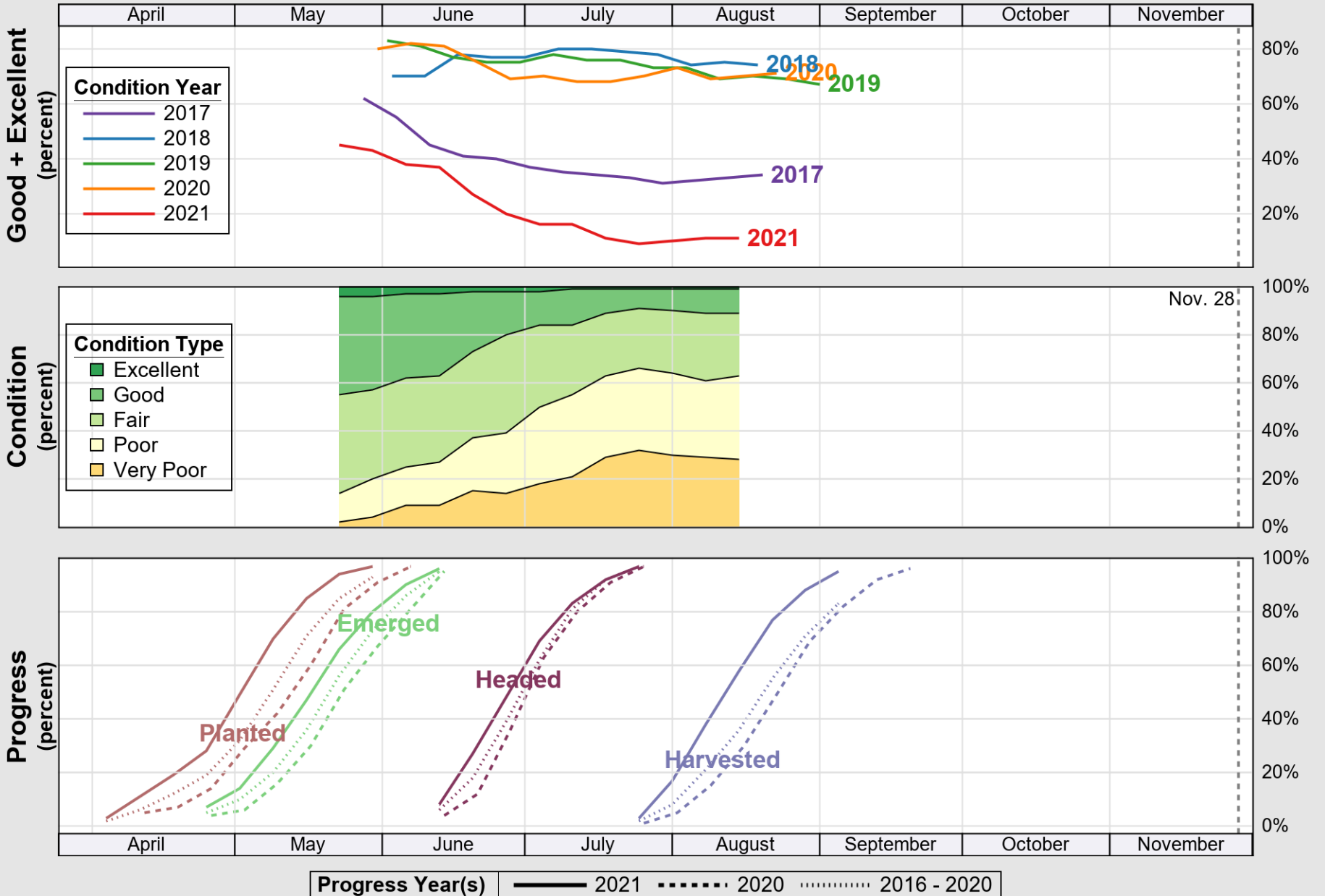


Source: National Agricultural Statistics Service (NASS), Crop Progress Report

USDA

Crop Progress and Condition: Spring Wheat in United States , 2021

NASS

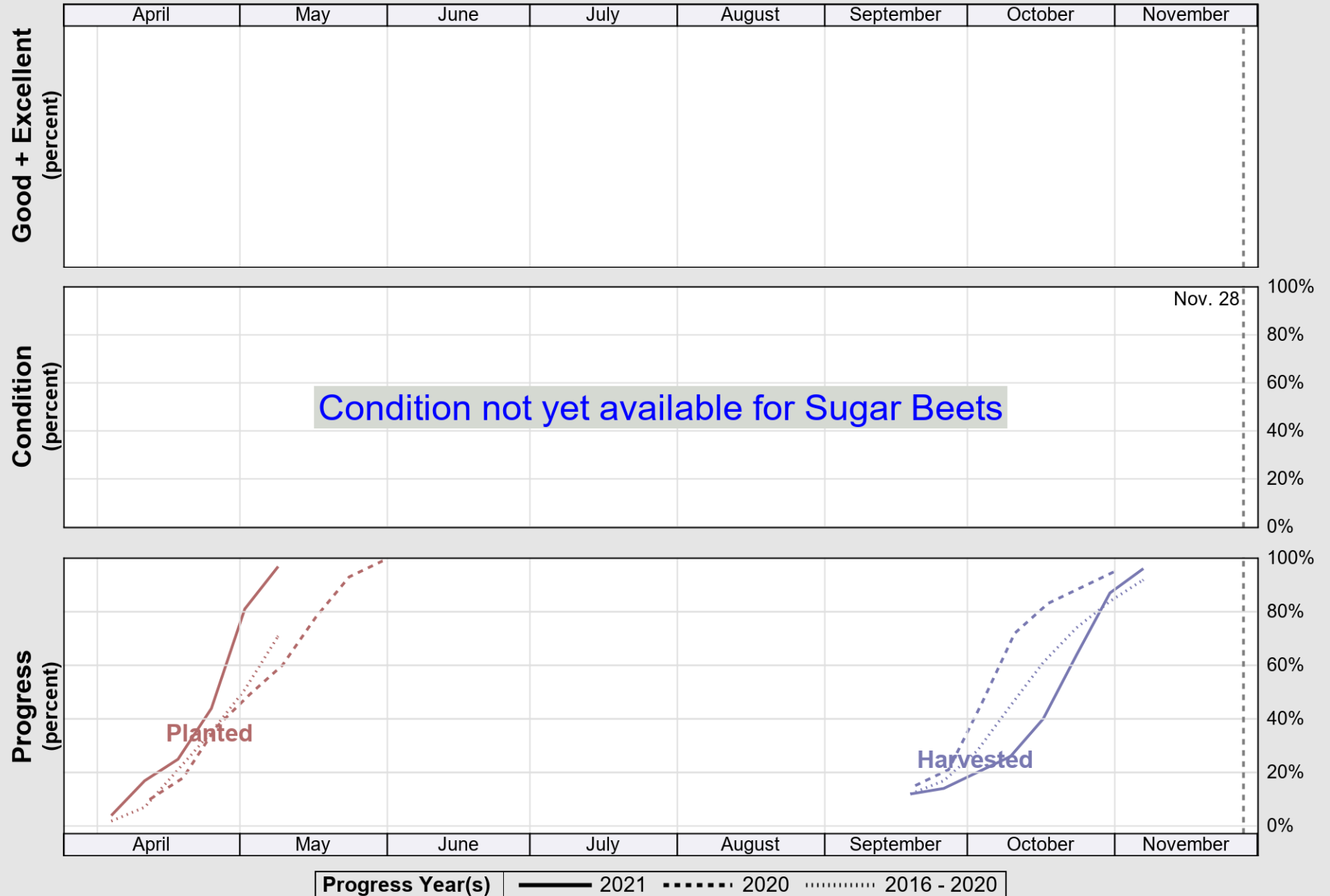


Source: National Agricultural Statistics Service (NASS), Crop Progress Report

USDA

Crop Progress and Condition: Sugar Beets in United States , 2021

NASS

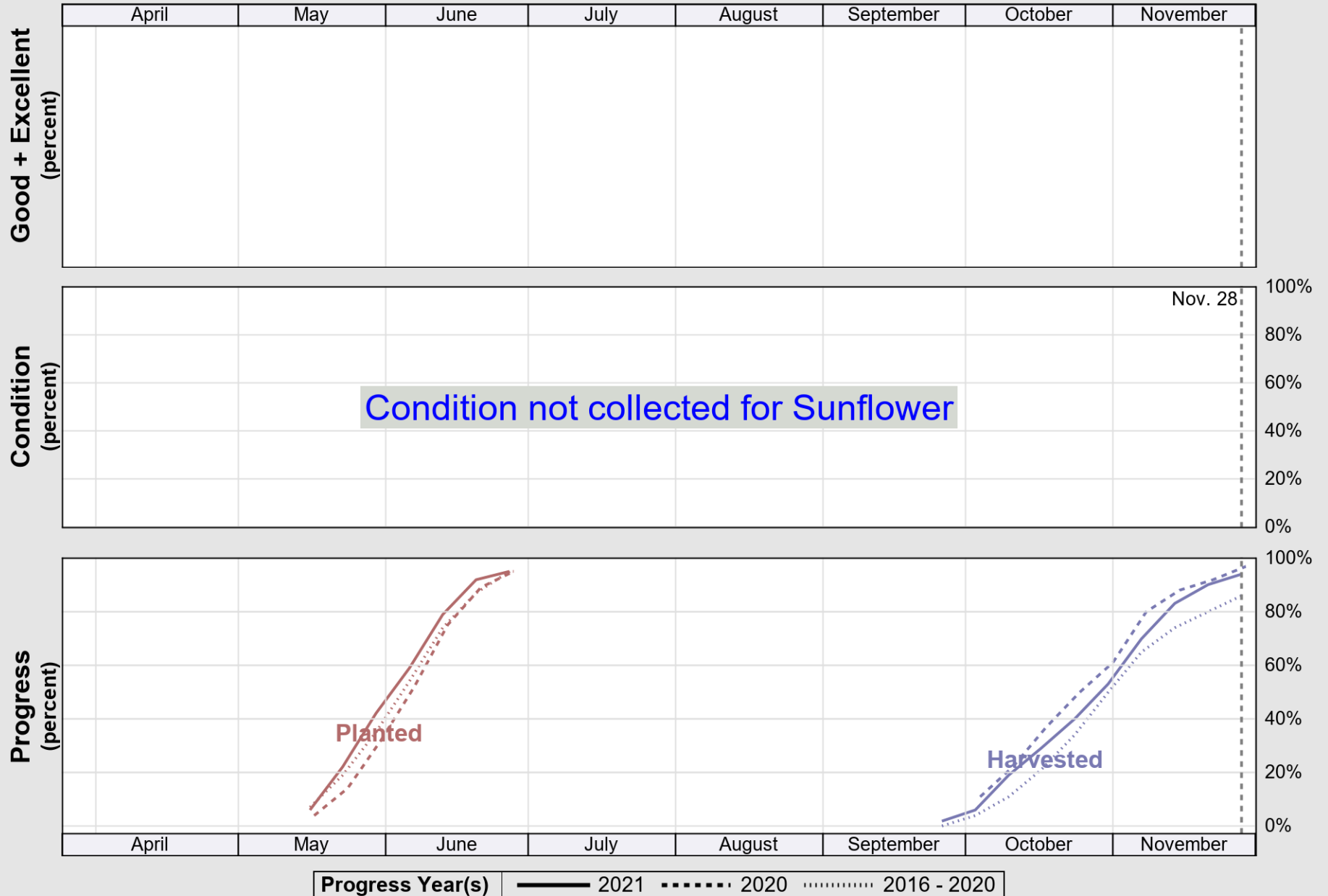


Source: National Agricultural Statistics Service (NASS), Crop Progress Report

USDA

Crop Progress and Condition: Sunflower in United States , 2021

NASS

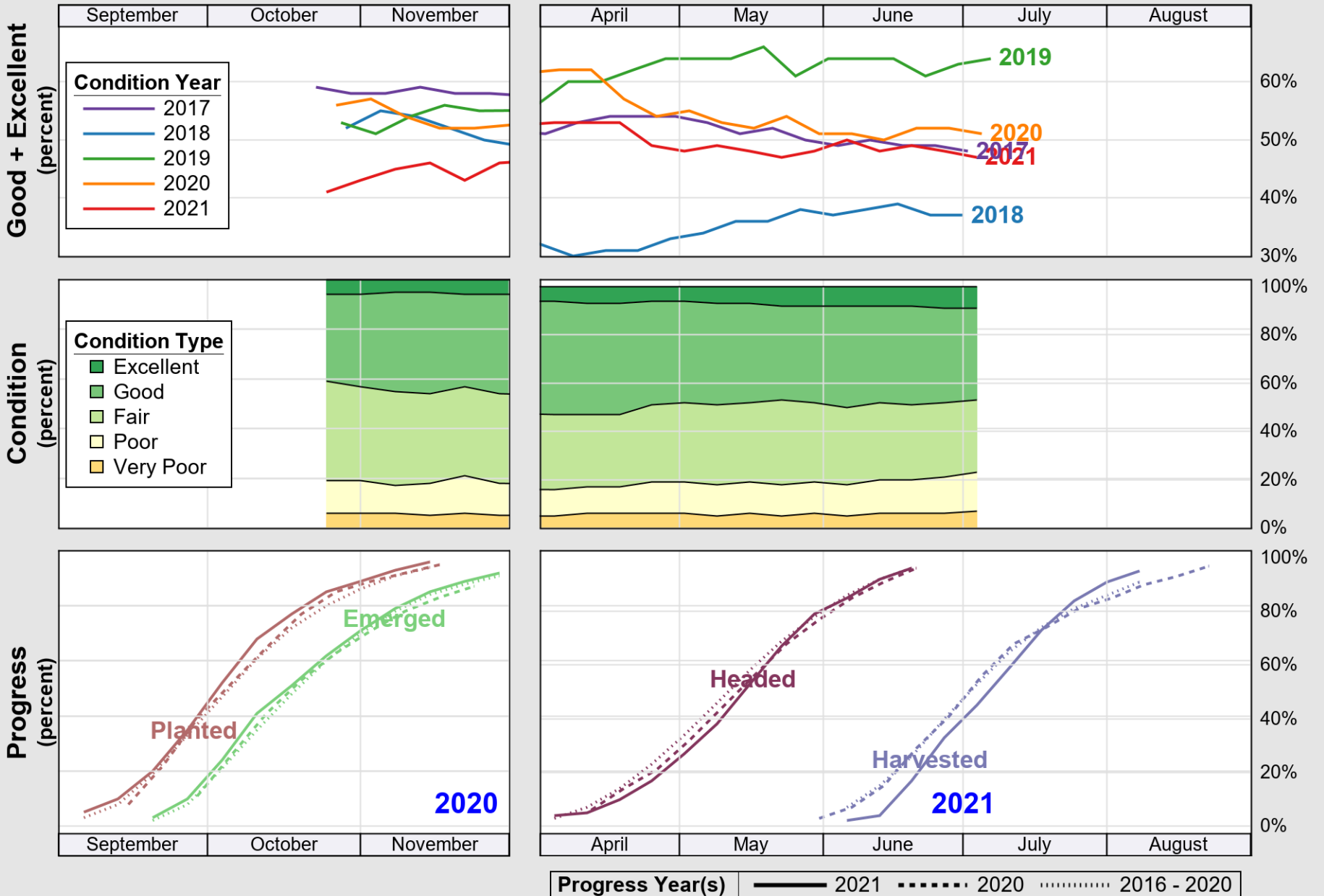


Source: National Agricultural Statistics Service (NASS), Crop Progress Report

USDA

Crop Progress and Condition: Winter Wheat in United States , 2021

NASS



Source: National Agricultural Statistics Service (NASS), Crop Progress Report