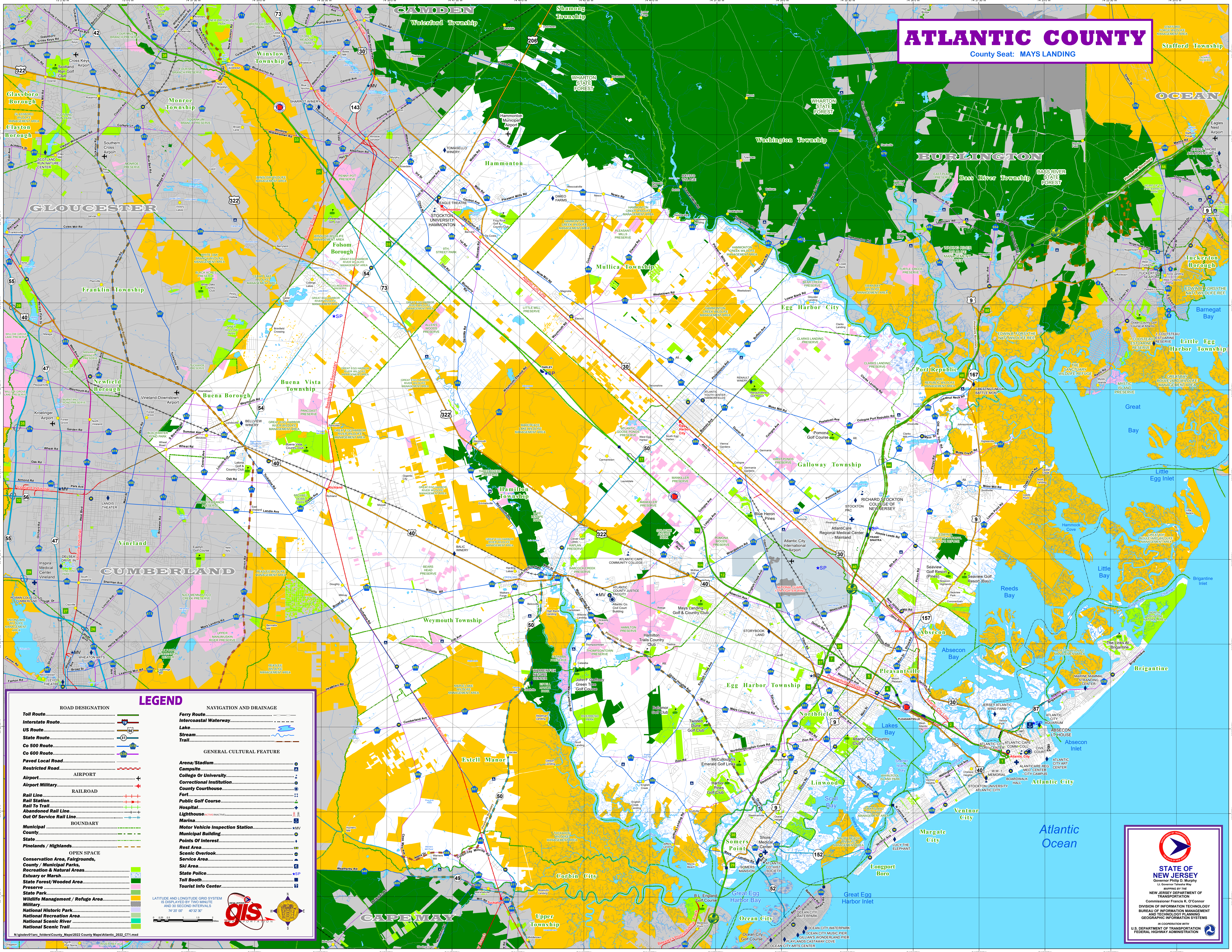


# ATLANTIC COUNTY

County Seat: MAYS LANDING



### LEGEND

ROAD DESIGNATION		NAVIGATION AND DRAINAGE	
Toll Route		Ferry Route	
Interstate Route		Intercastal Waterway	
US Route		Lake	
State Route		Stream	
Co 500 Route		Trail	
Co 600 Route			
Paved Local Road		GENERAL CULTURAL FEATURE	
Restricted Road		Arena/Stadium	
Airport		Campsite	
Airport Military		College Or University	
Rail Line		Correctional Institution	
Rail Station		County Courthouse	
Rail To Trail		Fort	
Abandoned Rail Line		Public Golf Course	
Out Of Service Rail Line		Hospital	
Municipal		Lighthouse	
County		Marina	
State		Motor Vehicle Inspection Station	
Pinelands / Highlands		Municipal Building	
Conservation Area, Fairgrounds, County / Municipal Parks, Recreation & Natural Areas		Points Of Interest	
Estuary or Marsh		Rest Area	
State Forest/Wooded Area		Scenic Overlook	
Preserve		Service Area	
State Park		State Police	
Wildlife Management / Refuge Area		Toll Booth	
Military		Tourist Info Center	
National Historic Park			
National Recreation Area			
National Scenic River			
National Scenic Trail			

LATITUDE AND LONGITUDE GRID SYSTEM IS DISPLAYED BY TWO MINUTE AND 30 SECOND INTERVALS  
74° 20' 00" 47° 32' 30"

**gis**

**STATE OF NEW JERSEY**  
Governor Philip D. Murphy  
Lt. Governor Tahara May

APPROVED BY THE  
NEW JERSEY DEPARTMENT OF  
TRANSPORTATION  
Commissioner Francis K. O'Connor

DIVISION OF INFORMATION TECHNOLOGY  
BUREAU OF INFORMATION MANAGEMENT  
AND TECHNOLOGY PLANNING  
GEOGRAPHIC INFORMATION SYSTEMS

IN COOPERATION WITH  
U.S. DEPARTMENT OF TRANSPORTATION  
FEDERAL HIGHWAY ADMINISTRATION