

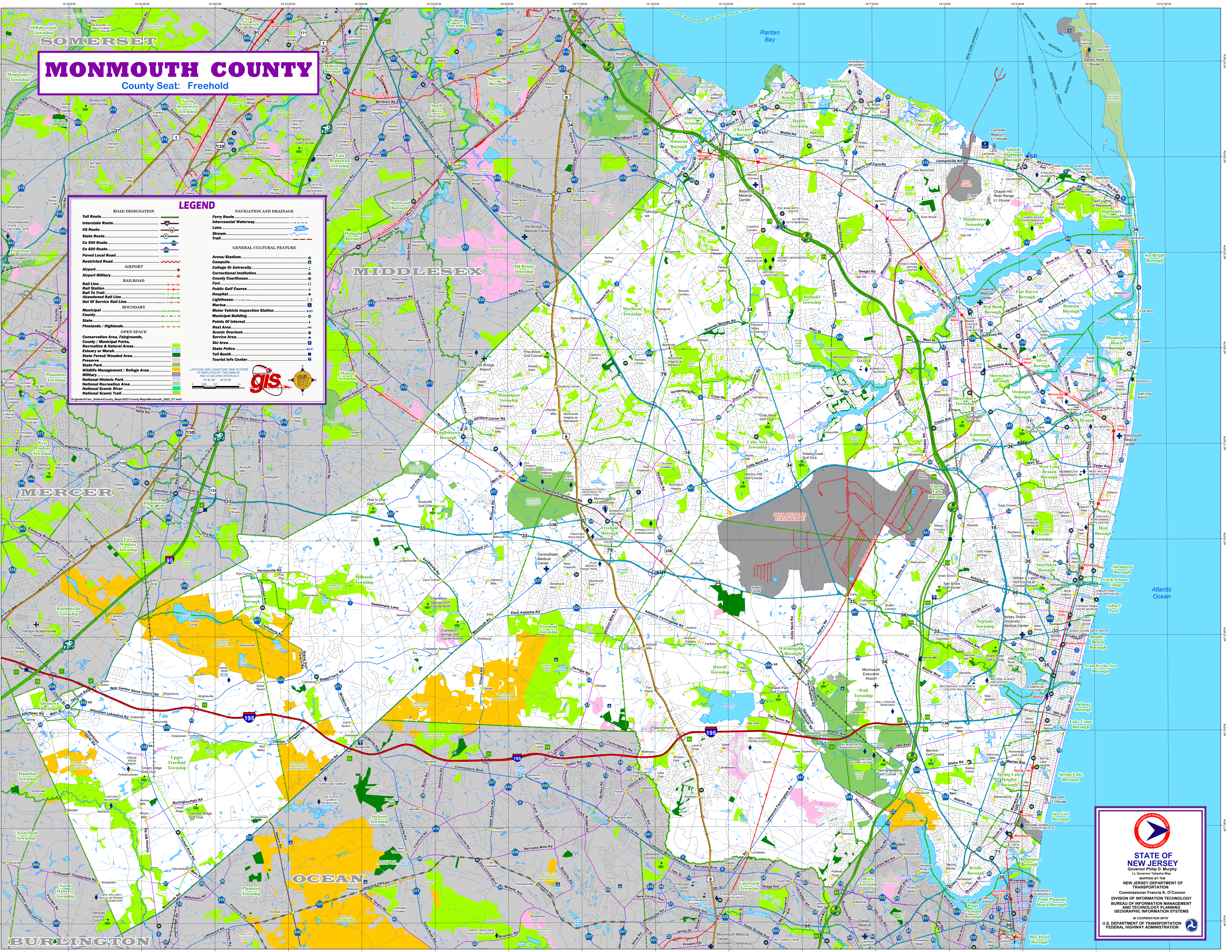
# MONMOUTH COUNTY

County Seat: Freehold

### LEGEND

ROAD DESIGNATION		NAVIGATION AND DRAINAGE	
Toll Route		Ferry Route	
Interstate Route		Intercoastal Waterway	
US Route		Lake	
State Route		Stream	
Co 900 Route		Trail	
Co 600 Route			
Restricted Road		GENERAL CULTURAL FEATURE	
Airport		Arena/Stadium	
Airport Military		Campus	
Rail Line		College Or University	
Rail Station		Correctional Institution	
Rail To Trail		County Courthouse	
Abandoned Rail Line		Fort	
Out Of Service Rail Line		Public Golf Course	
Municipal		Hospital	
State		Lighthouse	
State Forest / Wooded Area		Marina	
Preserve		Motor Vehicle Inspection Station	
State Park		Points Of Interest	
Wildlife Management / Refuge Area		Rest Area	
Millery		Scenic Overlook	
National Historic Park		Service Area	
National Recreation Area		Ski Area	
National Scenic River		State Police	
National Scenic Trail		Toll Booth	
		Tourist Info Center	

LATITUDE AND LONGITUDE GRID SYSTEM IS DISPLAYED BY TWO MINUTE AND 30 SECOND INTERVALS.  
74 30' 00" W 40 32' 30" N



**STATE OF NEW JERSEY**  
Governor Philip D. Murphy  
Lt. Governor Tashia Way

MAPPING BY THE  
NEW JERSEY DEPARTMENT OF TRANSPORTATION  
Commissioner Francis K. O'Connor  
DIVISION OF INFORMATION TECHNOLOGY  
AND TECHNOLOGY PLANNING  
GEOGRAPHIC INFORMATION SYSTEMS

IN COOPERATION WITH  
U.S. DEPARTMENT OF TRANSPORTATION  
FEDERAL HIGHWAY ADMINISTRATION