
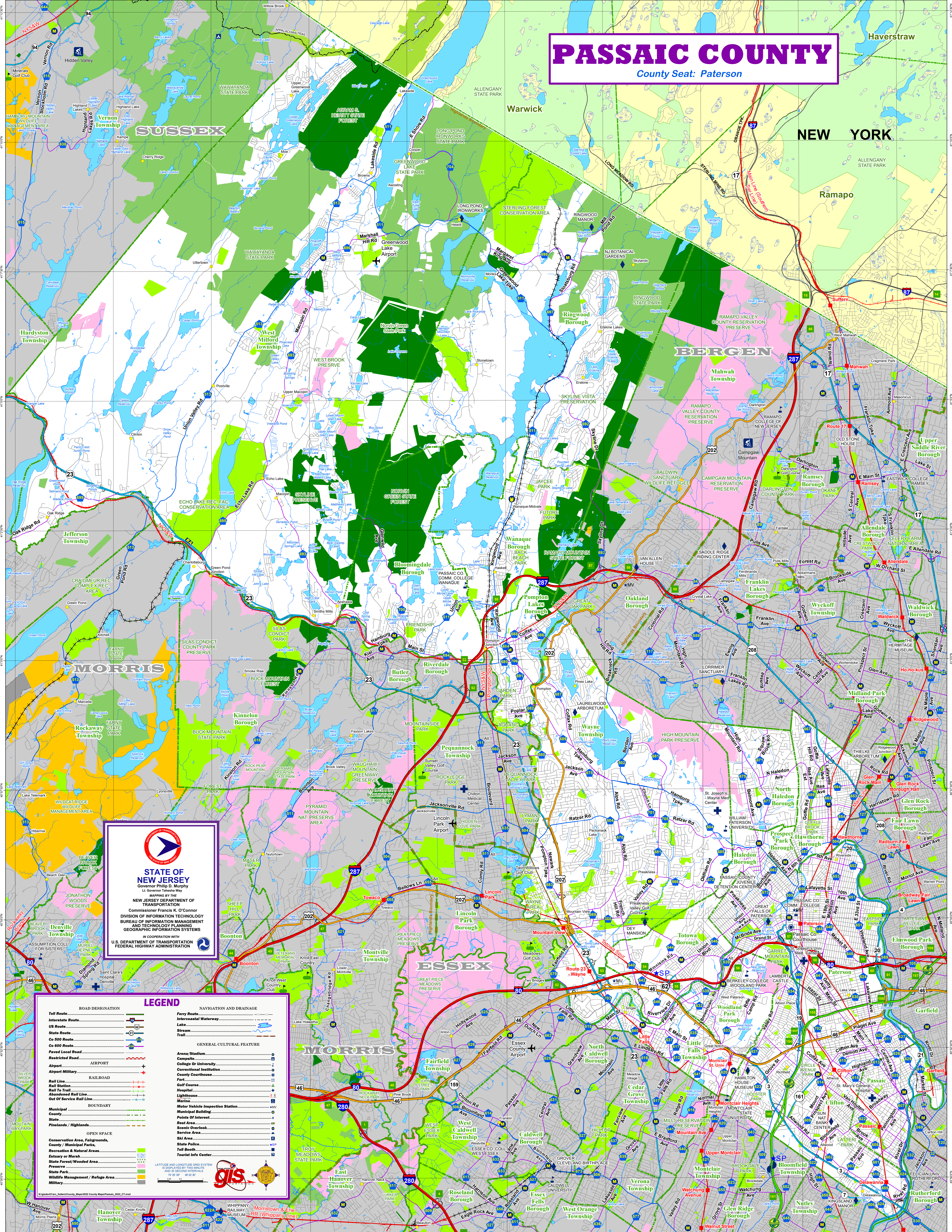


PASSAIC COUNTY

County Seat: Paterson



STATE OF NEW JERSEY
Governor Philip D. Murphy
Lt. Governor Tahesia Way
NEW JERSEY DEPARTMENT OF TRANSPORTATION
Commissioner Francis K. O'Connor
DIVISION OF INFORMATION TECHNOLOGY
BUREAU OF INFORMATION MANAGEMENT
AND TECHNOLOGY PLANNING
GEOGRAPHIC INFORMATION SYSTEMS
IN COOPERATION WITH
U.S. DEPARTMENT OF TRANSPORTATION
FEDERAL HIGHWAY ADMINISTRATION

LEGEND

- | | |
|--|----------------------------------|
| ROAD DESIGNATION | NAVIGATION AND DRAINAGE |
| Toll Route | Ferry Route |
| Interstate Route | Intercoastal Waterway |
| US Route | Lake |
| State Route | Stream |
| Co 500 Route | Trail |
| Co 600 Route | |
| Paired Local Road | GENERAL CULTURAL FEATURE |
| Restricted Road | Arena/Stadium |
| Airport | Campsite |
| Airport Military | College Or University |
| RAILROAD | Correctional Institution |
| Rail Line | County Courthouse |
| Rail To Trail | Fair |
| Abandoned Rail Line | Golf Course |
| Out Of Service Rail Line | Hospital |
| BOUNDARY | Lighthouse |
| Municipal | Marina |
| County | Motor Vehicle Inspection Station |
| State | Municipal Building |
| Pinelands / Highlands | Points Of Interest |
| OPEN SPACE | Rest Area |
| Conservation Area, Fairgrounds, County / Municipal Parks, Recreation & Natural Areas | State Police |
| Estuary or Marsh | Scenic Overlook |
| State Forest/Wooded Area | Service Area |
| Preserve | Ski Area |
| Wildlife Management / Refuge Area | Toll Booth |
| Military | Tourist Info Center |
- LATITUDE AND LONGITUDE GRID SYSTEM IS DISPLAYED BY TWO MINUTE AND 30 SECOND INTERVALS
74 20 00' 40 32 30"
- 