

Electronic Research Administration (ERA) Forum Webinar Series



*Research.gov Updates, SciENCv: Overview of Capabilities, and New
Award Notice - PI Transfer*

National Science Foundation
November 5, 2020



Welcome and Webinar Administrative Logistics

- Attendees will be in listen-only mode during the webinar.
- View real-time captions during the webinar at URL:
<https://www.captionedtext.com/client/event.aspx?EventID=4569252&Customer>
 - Enter confirmation ID # 4569252
- Presentation, Agenda, and Webinar recording will be available on the NSF ERA Forum Website
https://www.nsf.gov/bfa/dias/policy/era_forum.jsp.
- **For Zoom Support**, call +1-833-966-6468 (+1-833-Zoom-Gov) or email support@zoom.us.



Agenda

- Welcome, Forum Webinar Logistics, and How to Engage with the Forum
- The ERA Forum
- Speakers
- Forum Webinar Discussion Topics:
 - Research.gov Updates
 - Migrating Proposal Preparation from FastLane to Research.gov
 - System Enhancements
 - New Proposal Preparation Demo Site
 - Proposal Preparation Demo
 - SciENCv – Overview of Capabilities
 - New Award Notice - PI Transfer
- Questions and Answers
- Next Steps and ERA Forum Resources



How to Engage with the Forum

Forum Participation

- Questions can be sent to nsferaforum@nsf.gov during the webinar
 - Responses will be provided in a Frequently Asked Questions (FAQs) document and posted to the ERA Forum webpage
- Post-webinar Survey
- Future Forum Topics
- Forum Listserv and Email
 - Subscribe: NSF-ERA-FORUM-subscribe-request@listserv.nsf.gov
 - Email us: nsferaforum@nsf.gov
- General Information



The ERA Forum

Background and Purpose

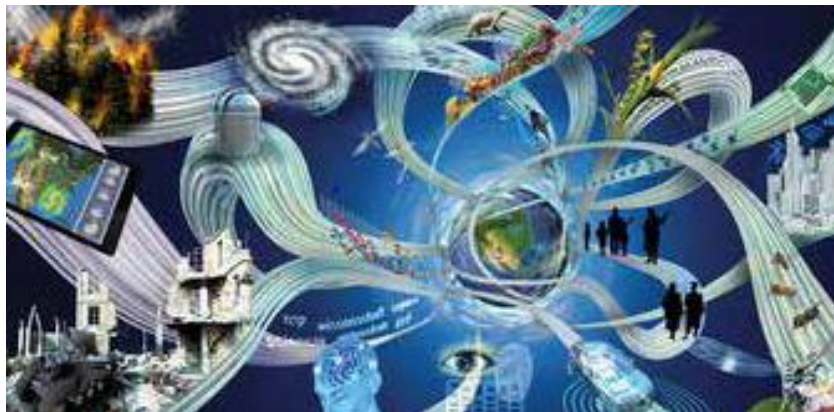
- Provides a new approach to regularly engaging the research community, which includes collecting individual opinions and perspectives on ERA activities, gathering topics of interest for future Forum Webinars, and soliciting volunteers for usability studies.

Past Forum Webinars:

- May 2020:
 - Key updates included the availability of both NSF-approved formats for the Biographical Sketch and Current and Pending Support sections of National Science Foundation (NSF) proposals that fall under the revised [Proposal & Award Policies & Procedures Guide](#) (PAPPG) (NSF 20-1); the availability of Separately Submitted Collaborative Proposals from Multiple Organizations on Research.gov.



Speakers



Maria Koszalka	Jean Feldman	Sonya Arora	Sherri Bailey	Jeff Vieceli
Staff Associate, Research.gov, Division of Institution and Award Support	Head, Policy Office, Division of Institution and Award Support	IT Project Manger, Division of Information Systems	Product Manager, National Institute of Health	Head, Systems Office, Division of Institution and Award Support



Research.gov Updates: Migrating Proposal Preparation from FastLane to Research.gov



Research.gov – Important Notice No. 147

- NSF is taking proactive steps to incrementally move the preparation and submission of all proposals from FastLane to Research.gov by 2022
- Some funding opportunities will require the use of Research.gov

Important Notice No. 147

Research.gov Implementation Update

Important Notice to Presidents of Universities and Colleges and Heads of Other National Science Foundation Grantee Organizations

September 22, 2020

The National Science Foundation (NSF) has been at the forefront in the development of Federal agency electronic systems designed to prepare and submit proposals for Federal financial assistance. From the introduction of FastLane in 1994, to the incremental development of Research.gov as its eventual replacement, NSF has led the way with modern, agile systems tailored to meet the needs of the research community.

While NSF's FastLane system has been a resounding success story, it is now an aging, antiquated system that has become increasingly expensive to maintain and even harder to improve. Over the past few years, NSF has partnered with and received valuable input from the research community, resulting in the development of a modern, flexible Research.gov system that reduces administrative burden to meet the current and future needs of researchers, administrators and organizations. As a result, NSF has successfully migrated important research functions from FastLane to Research.gov including the preparation and submission of annual and final project and outcomes reports, most notifications and requests and award payments. NSF is now taking proactive steps to incrementally move the preparation and submission of all proposals from FastLane to Research.gov with a tentative target date for completion by 2022.

In support of this effort, in the coming weeks and months, NSF will begin making changes to specific funding opportunities to require the use of Research.gov for the preparation and submission of proposals to NSF.¹ The Directorate for Biological Sciences (BIO) will soon require the use of Research.gov for the preparation and submission of proposals in response to its core programs that do not have deadline dates. NSF funding opportunities will clearly specify whether submission via Research.gov is available or required.

To ensure that researchers and administrators are prepared for these changes, NSF is developing additional training materials to meet the needs of the community. This includes video tutorials, Frequently Asked Questions, step-by-step guides and a demonstration site. Current training materials are available on the [About Research.gov site](#).

NSF encourages the community to become familiar with Research.gov and to begin using it for the preparation and submission of proposals, as well as to provide NSF with valuable feedback. For additional information, FAQs, opportunities for training and to provide feedback, please visit [Research.gov](#).

Dr. Sethuraman Panchanathan
Director

¹During this time, NSF will continue to permit proposals to be prepared and submitted via Grants.gov.



Research.gov – Directorate for Biological Sciences

- Core BIO program solicitations without deadline dates will require submission via Research.gov
- 90-day grace period before solicitations are removed from FastLane
- Visit the BIO website for details

NSF 20-129

Dear Colleague Letter: Implementation of Full Proposal Submission through Research.gov for "No Deadline" Program Solicitations in the Directorate for Biological Sciences

September 29, 2020

Dear Colleagues:

The Directorate for Biological Sciences (BIO) is notifying members of the research communities of an important change to the program solicitations noted below, effective in calendar year 2020.

Innovating and migrating proposal preparation and submission capabilities from FastLane to [Research.gov](https://www.research.gov) is part of the ongoing NSF IT modernization effort and is intended to provide the next generation of grants management capabilities for the research community, as described in [Important Notice No. 147](#). The Research.gov Proposal Submission System improves the user experience while also reducing administrative burden through an intuitive interface and is built on flexible system architecture with the ability to meet both users' changing needs and emerging government requirements.

In accordance with the modernization effort, BIO will implement a requirement for submission of full proposals via Research.gov or Grants.gov for the program solicitations listed below in the Division of Environmental Biology (DEB), the Division of Integrative Organismal Systems (IOS), the Division of Molecular and Cellular Biosciences (MCB), and in the Research Resources Cluster of the Division of Biological Infrastructure (DBI). These represent the set of BIO solicitations that accept proposal submission at any time (i.e., have no deadlines). This is the first phase in an eventual shift to require all proposals be submitted via Research.gov or Grants.gov.

By using a phased approach and starting with the no-deadlines solicitations, BIO hopes to provide researchers with sufficient time to adjust to submissions through Research.gov and the sunsetting of FastLane. We do not anticipate that the change to Research.gov will have significant impacts on the submission process, and this migration will not affect the merit review process in any way. Additional technical support is available for those who are new to Research.gov and to those who encounter any issues with proposal preparation and submission.

Revised solicitations for the below impacted programs will be published in the coming weeks. After a 90-day grace period, during which submissions will still be allowed through FastLane, the new solicitations will no longer be available in FastLane, and any new proposals must be submitted through [Research.gov](https://www.research.gov) or [Grants.gov](https://www.grants.gov).



Research.gov Updates: System Enhancements



Font Warnings – *Changes Effective November 23*

- The compliance checks and associated compliance warnings for **font type** and **font size** will be removed in Research.gov to align with FastLane
- PAPPG (NSF 20-1) [Chapter II.B.2.a.](#) proposal font requirements must be followed
- Proposals may be Returned Without Review if the font type or font size are not compliant with the PAPPG
- NSF is making these changes per feedback from the research community



Additional Proposal Types – Available November 23

- Rapid Response Research (**RAPID**), EARly-concept Grants for Exploratory Research (**EAGER**), and Research Advanced by Interdisciplinary Science and Engineering (**RAISE**) proposal types will be available in Research.gov
- New associated [automated compliance checks](#) will also be added

Research.gov Proposal Screenshot: Proposal Type Options

Prepare New Proposal

1. Funding Opportunity ✓ 2. Where to Apply ✓ 3. Proposal Type ✓ 4. Submission Type 5. Proposal Details

Select Proposal Type

What type of proposal will be used? ⓘ

- Research **Available now**
- Rapid Response Research (RAPID) Proposals **Available November 23, 2020**
- Early-concept Grants for Exploratory Research (EAGER) **Available November 23, 2020**
- Research Advanced by Interdisciplinary Research and Engineering (RAISE) **Available November 23, 2020**
- Grant Opportunities for Academic Liaison with Industry (GOALI)
- Ideas Lab
- Facilitation Awards for Scientists and Engineers with Disabilities (FASSED)
- Conferences **Future releases**
- Equipment
- Travel
- Center
- Research Infrastructure
- Fellowship

Note: All Proposal Types are listed in Research.gov but only those currently supported will be available for selection (i.e., unavailable selections are greyed out).



Research.gov Proposals: Capabilities Overview

Current Capabilities	Upcoming Capabilities	Future Capabilities
<p><u>Proposal Types</u></p> <ul style="list-style-type: none"> ✓ Research: Single Submissions from One Organization (<i>April 2018</i>) ✓ Research: Single Submission Collaborative Proposals with Subawards (<i>June 2019</i>) ✓ Research: Separately Submitted Collaborative Proposals from Multiple Organizations (<i>March 2020</i>) <p><u>Training</u></p> <ul style="list-style-type: none"> ✓ Research.gov Proposal Preparation Demo Site (<i>October 2020</i>) <p><i>Note: Since July 2020, Research.gov is able to support all Research proposals that conform to <u>standard</u> PAPPG requirements for formatting and document content.</i></p>	<p><u>Proposal Types</u></p> <p><i>Available November 23, 2020:</i></p> <ul style="list-style-type: none"> • Rapid Response Research (RAPID) • EArly-concept Grants for Exploratory Research (EAGER) • Research Advanced by Interdisciplinary Science and Engineering (RAISE) <p><u>Proposal Features</u></p> <ul style="list-style-type: none"> • Withdrawal of Single and Collaborative Submissions 	<p><u>Proposal Types</u></p> <ul style="list-style-type: none"> • Conference • Equipment • Travel • Grant Opportunities for Academic Liaison with Industry (GOALI) • Ideas Lab • Facilitation Awards for Scientists and Engineers with Disabilities (FASSED) • Center • Research Infrastructure • Fellowship • SBIR and STTR Phases I/II <p><u>Submission Types</u></p> <ul style="list-style-type: none"> • Letter of Intent (LOI) • Preliminary Proposal • Full Proposal related to a Preliminary Proposal • Renewal Proposal • Accomplishment-Based Renewal Proposal



Research.gov Updates: New Proposal Preparation Demo Site



Research.gov Proposal Preparation Demo Site

- Now available for use by the research community and NSF staff
- All users can perform the proposal **preparation** functions that can be executed by a Principal Investigator (PI) in the actual Research.gov Proposal Submission System. Proposal submission capability is disabled
- All users must sign in to Research.gov to access the demo site, and each user will have the role of PI for demo site purposes. No other user roles (e.g., Sponsored Project Officer or Authorized Organizational Representative) are available or needed

Research.gov Demo Site Screenshot: Proposal Preparation Homepage

The screenshot shows the Research.gov Proposal Preparation Demo Site homepage. The header includes the Research.gov logo, a 'DEMO' watermark, and a user profile for 'Demo user: Nan Alphaman, Principal Investigator (PI)'. The main content area is titled 'Proposal Preparation' and asks 'What would you like to work on?'. It contains three columns: 'Prepare New Proposal', 'In Progress Proposals', and 'Submitted Proposals'. The 'Submitted Proposals' column is crossed out with a large red X.



Research.gov Sign-in Options

Research.gov
ONLINE GRANTS MANAGEMENT
FOR THE NSF COMMUNITY

Sign In | Register | Home | Contact | Help | About

NSF User Sign In

Use your Primary Email Address, NSF ID, or your organization credentials to sign in to Research.gov

Primary Email Address or NSF ID [Forgot? / Look Up NSF ID](#)

Password [Forgot Password](#)

Sign In

New to NSF?
[Register](#)

Organization Credentials ⓘ

Select your organization from the drop-down menu below, to be taken to the InCommon Log In page for your organization.

Pick Your Organization

Sign In

Don't see your organization listed?
[Learn more / Register for InCommon](#)

Research.gov
ONLINE GRANTS MANAGEMENT
FOR THE NSF COMMUNITY

Forgot Password

For Research.gov and FastLane

Please enter your Primary Email Address or NSF ID below.

Primary Email Address or NSF ID [Forgot NSF ID](#)

I'm not a robot

This reCAPTCHA is for testing purposes only. Please report to the site admin if you are seeing this.

Next Cancel

- As of September 28, the [Research.gov Sign-in page](#) includes three sign-in options:
 - Primary email address + password (**new option**)
 - NSF ID + password (**existing option**)
 - Organization-issued Credentials (InCommon Federation participating organizations only) (**existing option**)
- Users can enter either their primary email address or their NSF ID for NSF account password recovery

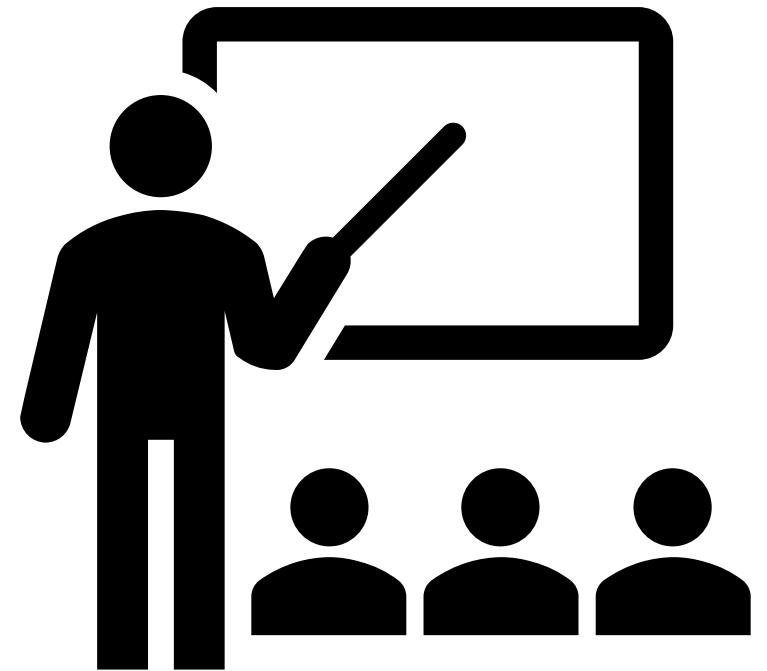


Research.gov Proposal Demo



Research.gov Proposal Demo

- Proposal Creation Wizard
- Main Proposal Page
- Document Upload and Compliance Error/Warning Messages
- Separately Submitted Collaborative Proposal
- Senior Personnel Documents
- Single Copy Documents
- Budget
- Proposal File Update (PFU)
- Budget Revision



Research.gov Proposal Training Resources

- Resources available when preparing proposals on both the actual Research.gov site and the demo site:

- Information tool tips
- Links to the PAPPG
- Links to FAQs
- Links to video tutorials



Excerpt from Research.gov Main Proposal Page (Demo Site)

Proposal Details	
Proposal Status: Not Shared with SPO/AOR	
Helpful Links	
View submitted proposals	
Proposal and Award Policies and Procedures Guide (PAPPG)	
Demo Site FAQs	
Video: How to Upload a Collaborators and Other Affiliations Document	
Video: How to Submit a Research Proposal	

Facilities, Equipment and Other Resources	Document unavailable for check
Senior Personnel Documents	Document(s) unavailable for check
Data Management Plan	Document unavailable for check
Postdoctoral Mentoring Plan Conditionally required	Document unavailable for check
Optional	
Other Personnel Biographical Information	Document unavailable for check
Other Supplementary Documents	Document unavailable for check
List of Suggested Reviewers (Single Copy Document)	Document unavailable for check
List of Reviewers Not to Include (Single Copy Document)	Document unavailable for check
Deviation Authorization (Single Copy Document)	Document unavailable for check
Additional Single Copy Documents	Document unavailable for check

- Resources on Research.gov [About Proposal and Submission](#) page:

- FAQs by topic
- Links to video tutorials
- Link to [Research.gov proposal automated compliance checklist](#)



Excerpt from Research.gov About Proposal Preparation and Submission Page

About Proposal Preparation and Submission

The Research.gov Proposal Submission System modernizes proposal preparation and submission capabilities by improving the user experience while also reducing administrative burden through an intuitive interface and expanded automated proposal compliance checking. The new system is being developed incrementally and as capabilities are migrated from FastLane to Research.gov, the system features will expand until it eventually replaces FastLane for proposal preparation and submission.

Access the Research.gov Proposal Submission System

Explore the Research.gov Proposal Preparation and Submission Demo Site

Current and Future Capabilities

Now supporting Full, Research proposals that are:

- Single submissions from one organization
- Single submission collaborative proposals from one organization (collaborative proposals with subawards)
- Separately submitted collaborative proposals from multiple organizations

View the [Research.gov Proposal Submission System Current and Future Capabilities](#) to see what's ahead.

Why Prepare Proposals in Research.gov?

- Fast and easy Proposal Setup Wizard
- Less than five minutes to quickly find funding opportunities, initiate a proposal, and give access to administrative staff
- Expanded compliance checking (View Research.gov compliance checks)
- Immediate compliance feedback upon proposal submission
- Higher quality proposal submissions (e.g., PDF uploads are not altered)



Information Resources for the Research Community

- NSF System Updates listserv to receive the latest Research.gov system enhancement information and FastLane news. Sign up by sending a blank email to: system_updates-subscribe-request@listserv.nsf.gov
- [Automated Compliance Checking of NSF Proposals webpage](#)
- NSF [Biographical Sketch](#) and [Current and Pending Support](#) websites with FAQs, as well as links to SciENCv video tutorials and reference resources with step-by-step instructions and screenshots
- [Research.gov About Proposal Preparation and Submission webpage](#) with new and updated FAQs organized by topic and links to video tutorials (*new information is being added on an ongoing basis, so please check back frequently....*)
- [Research.gov About Account Management webpage](#)
- [NSF Electronic Research Administration \(ERA\) Forum webpage](#)
- NSF ERA Forum listserv to receive updates on ERA Forum activities. Sign up by sending a blank email to: NSF-ERA-FORUM-subscribe-request@listserv.nsf.gov



SciENcv Overview

Sherri Holland Bailey, MLIS

SciENCv = Science Experts Network Curriculum Vitae

*Use your data from multiple systems to support
funding applications, reporting, and
collaboration with less burden and complexity*

Goals

Reduce burden of applying for federal funds and maintaining federal profiles

Leverage and extend data to/from external systems

Track impact of federal investments in science and scientist careers through scientist-curated data

Current Features

NIH biosketches, NSF biosketch, NSF Current and Pending Support, Dept. of Ed. IES biosketch

Integration with ORCID, Fastlane, PubMed/PMC and eRA Commons

Bulk upload of citations from reference manager software

NIH SF424 Application guide, 245 pages

NSF Proposal and Award Policies and Procedures Guide, 192 pages

GENERAL APPLICATION GUIDE FOR NIH AND OTHER PHS AGENCIES
SF424 (R&R) - Forms Version D
Released: March 25, 2016
Revised: June 10, 2016

G. 100 How to use the Application Instructions

- G. 110 Application Process
- G. 120 Significant Changes
- G. 130 Program Overview
- G. 200 SF 424 (R&R) Forms
- G. 210 PHS 398 Cover Page Supplement Form
- G. 220 R&R Other Project Information Form
- G. 230 Project Performance Site Locations Form
- G. 240 Senior/Key Person Profile (Expanded) Form
- G. 300 R&R Budget Form
- G. 310 R&R Subaward Budget Attachment(s) Form
- G. 320 PHS 398 Modular Budget Form
- G. 330 PHS 398 Training Budget Form
- G. 340 PHS 398 Training Subaward Budget Attachment(s) Form
- G. 350 PHS Additional Indirect Costs Form
- G. 400 PHS 398 Research Plan Form


G.100 - How to Use the Application Instructions

Use these application instructions to fill out the forms that are posted in your funding opportunity announcement.

Tour the [application guide](#)

Quick Links

- [Step 1. Become familiar with the application process](#)
- [Step 2. Select the correct application instructions.](#)
- [Step 3. Choose an Application Guide format.](#)
- [Step 4. Complete the appropriate forms.](#)
- [Step 5. Stay informed of policy changes and updates.](#)



Step 1. Become familiar with the application submission process.

Understanding the application process is critical to successfully submitting your application. Use the [Application Process](#) section of these instructions to learn the importance of completing required registrations before submission, how to submit and track your application, where to find page limits and formatting requirements, and more.

Step 2. Use these instructions together with the forms and information found in the funding opportunity announcement.

The funding opportunity announcement will include the forms needed for your application submission.

! Remember that the funding opportunity announcement instructions always supersede these application instructions.


Step 3. Choose which application instruction format you prefer to use.

THE NATIONAL SCIENCE FOUNDATION

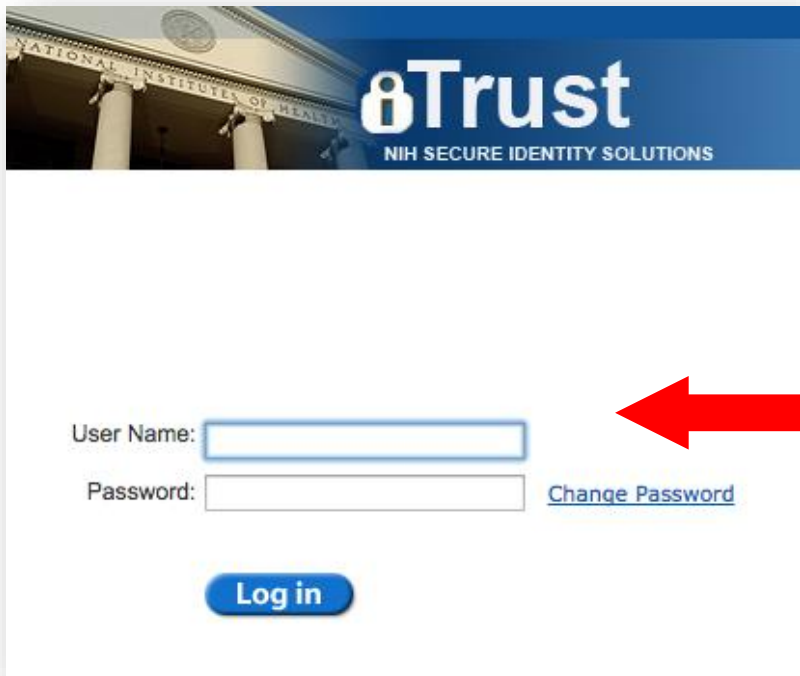
PROPOSAL AND AWARD POLICIES AND PROCEDURES GUIDE



Effective February 25, 2019
NSF 19-1
OMB Control Number 3145-0058



Link to external accounts



iTrust
NIH SECURE IDENTITY SOLUTIONS

NATIONAL INSTITUTES OF HEALTH

User Name:

Password: [Change Password](#)

Log in



Sign in to NCBI

 **Commons login**  **NSF login**

Sign into ORCID or [Register now](#)

Personal account **Institutional account**

Sign in with your ORCID account

Email or ORCID ID

ORCID password

Sign into ORCID

[Forgotten your password? Reset it here](#)

Sign in with a social media account 



 **NSF User Sign In**

There are 2 ways to sign in to Research.gov. Use your **NSF ID** or your

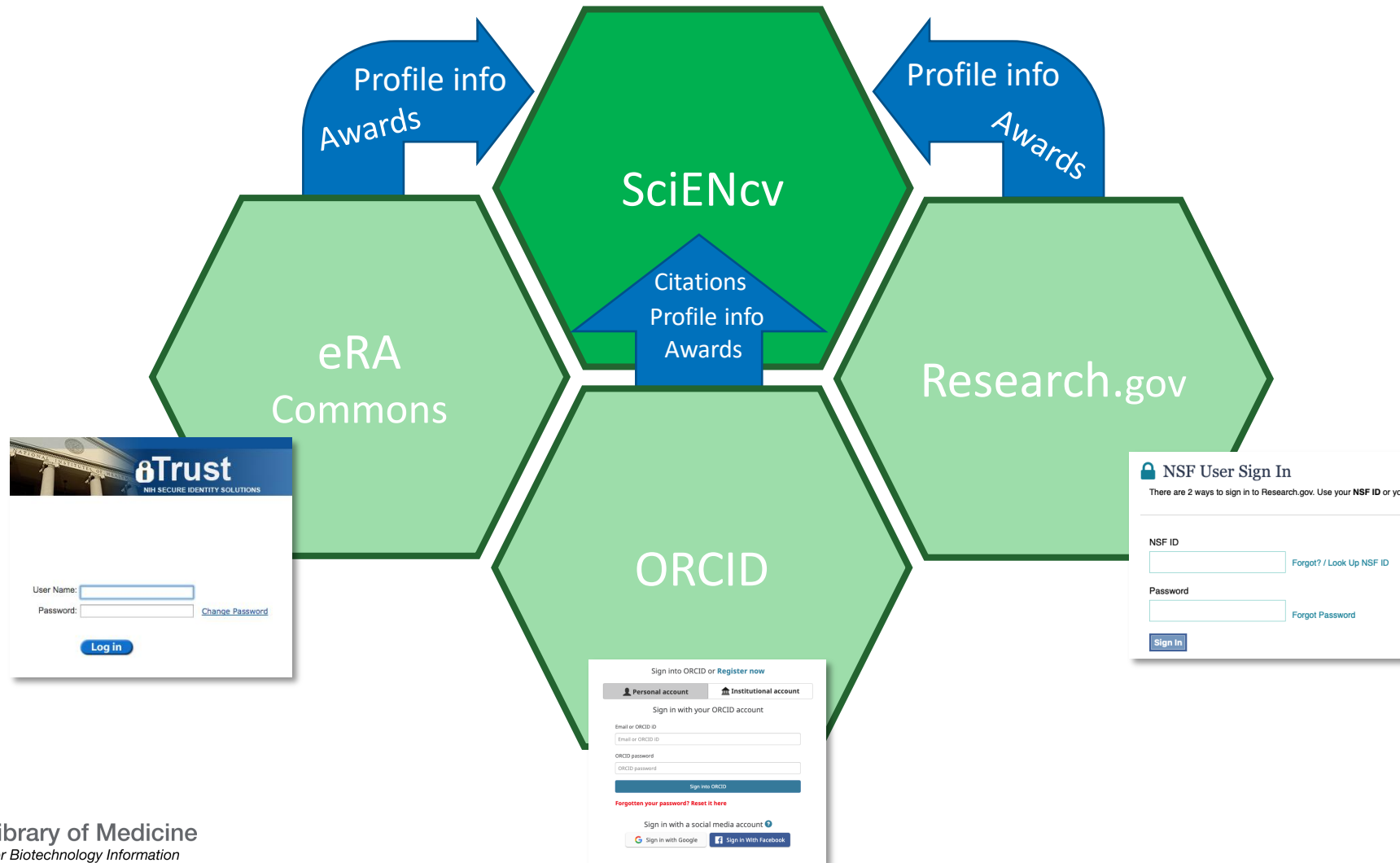
NSF ID
 [Forgot? / Look Up NSF ID](#)

Password
 [Forgot Password](#)

Sign In



Linking external accounts



Link to external accounts

Last Updated: 10 September 2020

Sharing: Pr

NAME [Edit]
Trawick, Barton

A. PROFESSION
List undergraduate and training.
You have not listed any

B. APPOINTMEN
List, in reverse chrono
You have not listed any

C. PRODUCTS

Edit Personal Information

Required Information

First Name: * * required field

Last Name: *

Optional Information

[+ add another address line](#)

City:

State:

Country:

Postal/zip code:

Email:

ORCID iD: [Add your ORCID iD to this profile?](#)

NSF ID: [Add your NSF ID to this profile?](#)

NCBI Resources How To sciencvtest2

COVID-19 is an emerging, rapidly evolving situation.
Get the latest public health information from CDC: <https://www.coronavirus.gov>.
Get the latest research from NIH: <https://www.nih.gov/coronavirus>.
Find NCBI SARS-CoV-2 literature, sequence, and clinical content: <https://www.ncbi.nlm.nih.gov/sars-cov-2/>.

My NCBI » Settings

NCBI Account Settings

Email

husainnf@ncbi.nlm.nih.gov (confirmed)
This email is used for delivery of saved searches and recovery of password for your native NCBI account.

Native NCBI Account *The following username and password is maintained by NCBI.*

Username: **sciencvtest2**
Password: *****

Linked accounts *You can sign in via these 3rd-parties. Contact the 3rd party for sign-in related issues.*

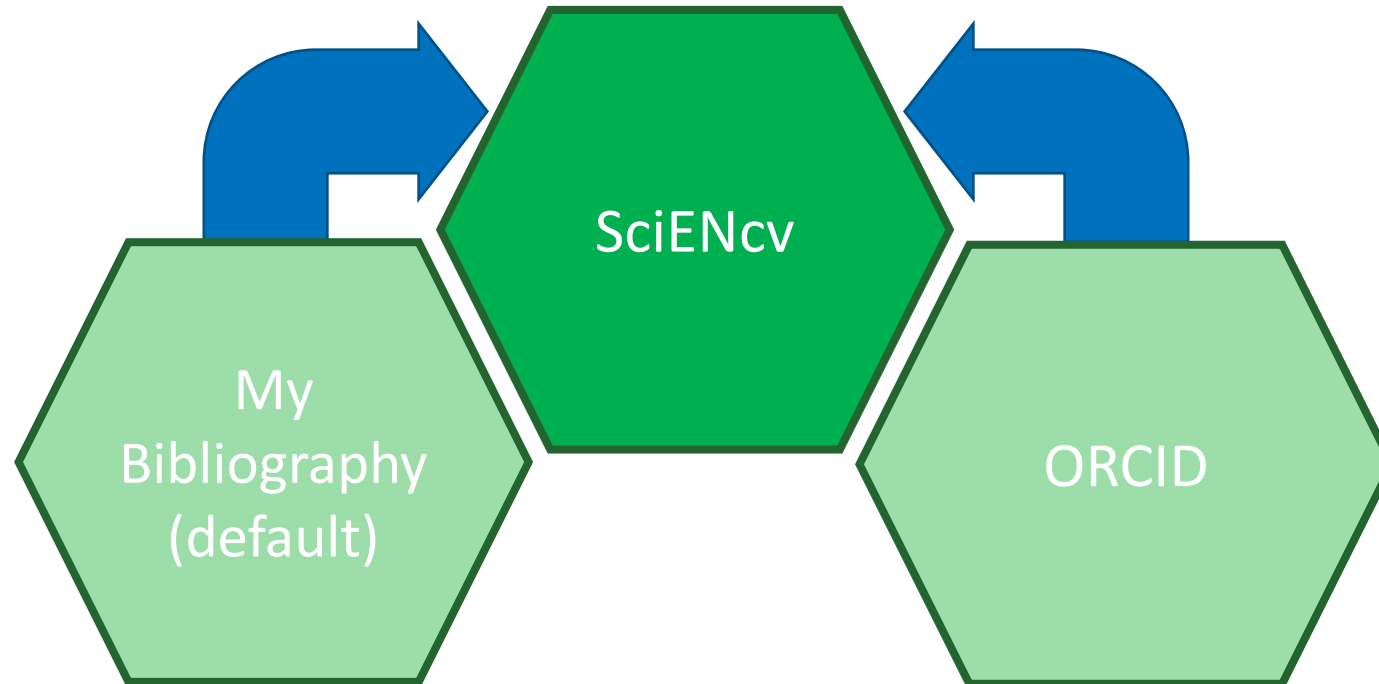
eRA	999000001@nsf.gov
eRA Commons	JOHNDOE
ORCID	0000-0002-0923-6859

Delegates

You can add delegates to help you manage your bibliography and/or SciENcv profiles.
[Add a Delegate](#)

Using citations in SciENcv

- Pulls from PubMed
- Tracks NIH Public Access Compliance
- Populates NIH RPPR
- Supports RIS upload
- Can create manual citations



- Pulls from multiple sources (CrossRef, Scopus, etc.)
- Supports BibTex upload
- Can create manual citations

Using citations in SciENcv: large author lists

C. PRODUCTS

Acceptable products must be citable and accessible including but not limited to publications, data sets, software, patents, and copyrights. Unacceptable products are unpublished documents not yet submitted for publication, invited lectures, and additional lists of products. Each product must include full citation information including (where applicable and practicable) names of all authors, date of publication or release, journal or book, volume, issue, pages, website and Uniform Resource Locator (URL) or other Persistent Identifier.

PRODUCTS MOST CLOSELY RELATED TO THE PROPOSED PROJECT [Select citations]

- Edelsbrunner H, Guibas L, Hershberger J, Seidel R, Sharir M, Snoeyink J, Welzl E. Implicitly representing arrangements of lines or segments. *Discrete & Computational Geometry*. 1989 October 1; 4(5):433-466. Available from: <http://link.springer.com/10.1007/BF02187742>
- Scott RA, Lagou V, Welch RP, Wheeler E, Montasser ME, Luan J, Mägi R, Strawbridge RJ, Rehnberg E, Gustafsson S, Sanna S, Sidore C, Johnson PC, Jukema JW, Johnson T, Mahajan A, Verweij N, Thorleifsson G, Hottenga JJ, Shah S, Smith AV, Sennblad B, Gieger C, Salo P, Perola M, Timpson NJ, Evans DM, Pourcain BS, Wu Y, Andrews JS, Hui J, Bielak LF, Zhao Y, Atalay M, Kiess W, James AL, Rivadeneira F, Uitterlinden AG, Lindstrom J, Zemanek T, Bandinelli S, Wild SH, Basart HV, Rathmann W, Grallert H, Maerz W, Kleber ME, Boehm BO, Peters A, Pramstaller PP, Province MA, Borecki IB, Hastie ND, Rudan I, Campbell H, Watkins H, Farrall M, Stumvoll M, Ferrucci L, Waterworth DM, Bergman RN, Collins FS, Tuomilehto J, Watanabe RM, Hoffmann M, Surtees P, Vollenweider P, Wilson JF, Wright AF, Hovingh GK, Metspalu A, Uusitupa M, Magnusson PK, Kyvik KO, Kaprio J, Price JF, Dedoussis GV, Deloukas P, Meneton P, Lind L, Boehnke M, Shuldiner AR, van Duijn CM, Morris AD, Toenjes A, Peyser PA, Beilby JP, Köster A, Kuusisto J, Laakso M, Bornstein SR, Schwarz PE, Lakka TA, Rauramaa R, Adair LS, Smith GD, Spector TD, Illig T, de Faire U, Hamsten A, Gudnason V, Kivimäki M, Hingorani A, Keinanen-Kiukkaanniemi SM, Saaristo TE, Boomsma DI, Stefansson K, van der Harst P, Dupuis J, Pedersen NL, Satta M, Mohlke KL, Balkau B, Froguel P, Pouta A, Jarvelin MR, Wareham NJ, Bouatia-Naji N, McCarthy MI, Franks P, C, Ingelsson E, Prokopenko I, Barroso I. Large-scale association analyses identify new loci influencing glycaemic traits. *Nat Genet*. 2012 Sep;44(9):991-1005. PubMed PMID: 22885924; NIHMSID: UKMS45222
- Berndt SI, Gustafsson S, Mägi R, Ganna A, Wheeler E, Feitosa MF, Justice AE, Monda KL, Croteau-Chonka KA, Jackson AU, Luan J, Randall JC, Vedantam S, Willer CJ, Winkler TW, Wood AR, Workalemahu T, Hu YJ, Lee G, Yang J, Albrecht E, Amin N, Bragg-Gresham JL, Cadby G, den Heijer M, Eklund N, Fischer K, Goel A, Hottenga JJ, Shah S, Smith AV, Sennblad B, Gieger C, Salo P, Perola M, Timpson NJ, Evans DM, Pourcain BS, Wu Y, Andrews JS, Hui J, Bielak LF, Zhao Y, Atalay M, Kiess W, James AL, Rivadeneira F, Uitterlinden AG, Lindstrom J, Zemanek T, Bandinelli S, Wild SH, Basart HV, Rathmann W, Grallert H, Maerz W, Kleber ME, Boehm BO, Peters A, Pramstaller PP, Province MA, Borecki IB, Hastie ND, Rudan I, Campbell H, Watkins H, Farrall M, Stumvoll M, Ferrucci L, Waterworth DM, Bergman RN, Collins FS, Tuomilehto J, Watanabe RM, Hoffmann M, Surtees P, Vollenweider P, Wilson JF, Wright AF, Hovingh GK, Metspalu A, Uusitupa M, Magnusson PK, Kyvik KO, Kaprio J, Price JF, Dedoussis GV, Deloukas P, Meneton P, Lind L, Boehnke M, Shuldiner AR, van Duijn CM, Morris AD, Toenjes A, Peyser PA, Beilby JP, Köster A, Kuusisto J, Laakso M, Bornstein SR, Schwarz PE, Lakka TA, Rauramaa R, Adair LS, Smith GD, Spector TD, Illig T, de Faire U, Hamsten A, Gudnason V, Kivimäki M, Hingorani A, Keinanen-Kiukkaanniemi SM, Saaristo TE, Boomsma DI, Stefansson K, van der Harst P, Dupuis J, Pedersen NL, Satta M, Mohlke KL, Balkau B, Froguel P, Pouta A, Jarvelin MR, Wareham NJ, Bouatia-Naji N, McCarthy MI, Franks P, C, Ingelsson E, Prokopenko I, Barroso I. Large-scale association analyses identify new loci influencing glycaemic traits. *Nat Genet*. 2012 Sep;44(9):991-1005. PubMed PMID: 22885924; NIHMSID: UKMS45222

NSF Policy requires that each biographical sketch be no longer than two (2) pages unless otherwise specified in a solicitation.

It is the responsibility of the submitter to ensure compliance with the two (2) page maximum.

Close

NSF BIOGRAPHICAL SKETCH

NAME: test2, sciencv

NSF ID: 99900001@nsf.gov

ORCID: 0000-0002-0923-6859

POSITION TITLE & INSTITUTION:

(a) PROFESSIONAL PREPARATION

INSTITUTION	LOCATION	MAJOR / AREA OF STUDY	DEGREE (if applicable)	YEAR YYYY
-------------	----------	-----------------------	------------------------	-----------

(b) APPOINTMENTS

(c) PRODUCTS

Products Most Closely Related to the Proposed Project

- Edelsbrunner H, Guibas L, Hershberger J, Seidel R, Sharir M, Snoeyink J, Welzl E. Implicitly representing arrangements of lines or segments. *Discrete & Computational Geometry*. 1989 October 1; 4(5):433-466. Available from: <http://link.springer.com/10.1007/BF02187742>
- Scott RA, Lagou V, Welch RP, Wheeler E, Montasser ME, Luan J, Mägi R, Strawbridge RJ, Rehnberg E, Gustafsson S, Kanoni S, Rasmussen-Torvik LJ, Yengo L, Lecoeur C, Shungin D, Sanna S, Sidore C, Johnson PC, Jukema JW, Johnson T, Mahajan A, Verweij N, Thorleifsson G, Hottenga JJ, Shah S, Smith AV, Sennblad B, Gieger C, Salo P, Perola M, Timpson NJ, Evans DM, Pourcain BS, Wu Y, Andrews JS, Hui J, Bielak LF, Zhao Y, Horikoshi M, Navarro P, Isaacs A, O'Connell JR, Stirrups K, Vitart V, Hayward C, Esko T, Mihailov E, Fraser RM, Fall T, Voight BF, Raychaudhuri S, Chen H, Lindgren CM, Morris AP, Rayner NW, Robertson N, Rybin D, Liu CT, Beckmann JS, Willems SM, Chines PS, Jackson AU, Kang HM, Stringham HM, Song K, Tanaka T, Peden JF, Goel A, Hicks AA, An P, Müller-Nurasyid M, Franco-Cereceda A, Folkersen L, Marullo L, Jansen H, Oldehinkel AJ, Bruinenberg M, Pankow JS, North KE, Forouhi NG, Loos RJ, Edkins S, Varga TV, Hallmans G, Oksa H, Antonella M, Nagaraja R, Trompet S, Ford I, Bakker SJ, Kong A, Kumari M, Gigante B, Herder C, Munroe P, Antti J, Mangino M, Small K, Miljkovic I, Liu Y, Atalay M, Kiess W, James AL, Rivadeneira F, Uitterlinden AG, Palmer CN, Doney AS, Willemsen G, Smit JH, Campbell S, Polasek O, Bonycastle LL, Hercberg S, Dimitriou M, Bolton JL, Fowkes GR, Kovacs P, Lindström J, Zemunik T, Bandinelli S, Wild SH, Basart HV, Rathmann W, Grallert H, Maerz W, Kleber ME, Boehm BO, Peters A, Pramstaller PP, Province MA, Borecki IB, Hastie ND, Rudan I, Campbell H, Watkins H, Farrall M, Stumvoll M, Ferrucci L, Waterworth DM, Bergman RN, Collins FS, Tuomilehto J, Watanabe RM, de Geus EJ, Penninx BW, Hofman A, Oostra BA, Psaty BM, Vollenweider P, Wilson JF, Wright AF, Hovingh GK, Metspalu A, Uusitupa M, Magnusson PK, Kyvik KO, Kaprio J, Price JF, Dedoussis GV, Deloukas P, Meneton P, Lind L, Boehnke M, Shuldiner AR, van Duijn CM, Morris AD, Toenjes A, Peyser PA, Beilby JP, Köster A, Kuusisto J, Laakso M, Bornstein SR, Schwarz PE, Lakka TA, Rauramaa R, Adair LS, Smith GD, Spector TD, Illig T, de Faire U, Hamsten A, Gudnason V, Kivimäki M, Hingorani A, Keinanen-Kiukkaanniemi SM, Saaristo TE, Boomsma DI, Stefansson K, van der Harst P, Dupuis J, Pedersen NL, Satta M, Mohlke KL, Balkau B, Froguel P, Pouta A, Jarvelin MR, Wareham NJ, Bouatia-Naji N, McCarthy MI, Franks P, C, Ingelsson E, Prokopenko I, Barroso I. Large-scale association analyses identify new loci influencing glycaemic traits. *Nat Genet*. 2012 Sep;44(9):991-1005. PubMed PMID: 22885924; NIHMSID: UKMS45222

BS-1 of 3

Using citations in SciENcv: large author lists

PRODUCTS MOST CLOSELY RELATED TO THE PROPOSED PROJECT [[Save citations](#)]

My Bibliography

ORCID

Edited

Sort by: Publication date Select: None 3 item(s) selected Refresh the list from ORCID unchecked entries are hidden from display

- Edelsbrunner H, Guibas L, Hershberger J, Seidel R, Sharir M, Snoeyink J, Welzl E. Implicitly representing arrangements of lines or segments. *Discrete & Computational Geometry*. 1989 October 1; 4(5):433-466. Available from: <http://link.springer.com/10.1007/BF02187742> DOI: 10.1007/BF02187742 [Edit authors](#)
- Scott RA, Lagou V, Welch RP, Wheeler E, Montasser ME, Luan J, Mägi R, Strawbridge RJ, Rehnberg E, Gustafsson S, Kanoni S, Rasmussen-Torvik LJ, Yengo L, Lecoeur C, Shungin D, Sanna S, Sidore C, Johnson PC, Jukema JW, Johnson T, Mahajan A, Verweij N, Thorleifsson G, Hottenga JJ, Shah S, Smith AV, Sennblad B, Gieger C, Salo P, Perola M, Timpson NJ, Evans DM, Pourcain BS, Wu Y, Andrews JS, Hui J, Bielak LF, Zhao W, Horikoshi M, Navarro P, Isaacs A, O'Connell JR, Stirrups K, Vitart V, Hayward C, Esko T, Mihailov E, Fraser RM, Fall T, Voight BF, Raychaudhuri S, Chen H, Lindgren CM, Morris AP, Rayner NW, Robertson N, Rybin D, Liu CT, Beckmann JS, Willems SM, Chines PS, Jackson AU, Kang HM, Stringham HM, Song K, Tanaka T, Peden JF, Goel A, Hicks AA, An P, Müller-Nurasyid M, Franco-Cereceda A, Folkersen L, Marullo L, Jansen H, Oldehinkel AJ, Bruinenberg M, Pankow JS, North KE, Forouhi NG, Loos RJ, Edkins S, Varga TV, Hallmans G, Oksa H, Antonella M, Nagaraja R, Trompet S, Ford I, Bakker SJ, Kong A, Kumari M, Gigante B, Herder C, Munroe PB, Caulfield M, Antti J, Mangino M, Small K, Miljkovic I, Liu Y, Atalay M, Kiess W, James AL, Rivadeneira F, Uitterlinden AG, Palmer CN, Doney AS, Willemsen G, Smit JH, Campbell S, Polasek O, Bonnycastle LL, Hercberg S, Dimitriou M, Bolton JL, Fowkes GR, Kovacs P, Lindström J, Zemunik T, Bandinelli S, Wild SH, Basart HV, Rathmann W, Grallert H, Maerz W, Kleber ME, Boehm BO, Peters A, Pramstaller PP, Province MA, Borecki IB, Hastie ND, Rudan I, Campbell H, Watkins H, Farrall M, Stumvoll M, Ferrucci L, Waterworth DM, Bergman RN, Collins FS, Tuomilehto J, Watanabe RM, de Geus EJ, Penninx BW, Hofman A, Oostra BA, Psaty BM, Vollenweider P, Wilson JF, Wright AF, Hovingh GK, Metspalu A, Uusitupa M, Magnusson PK, Kyvik KO, Kaprio J, Price JF, Dedoussis GV, Deloukas P, Meneton P, Lind L, Boehnke M, Shuldiner AR, van Duijn CM, Morris AD, Toenjes A, Peyser PA, Beilby JP, Körner A, Kuusisto J, Laakso M, Bornstein SR, Schwarz PE, Lakka TA, Rauramaa R, Adair LS, Smith GD, Spector TD, Illig T, de Faire U, Hamsten A, Gudnason V, Kivimaki M, Hingorani A, Keinanen-Kiukkaanniemi SM, Saaristo TE, Boomsma DI, Stefansson K, van der Harst P, Dupuis J, Pedersen NL, Sattar N, Harris TB, Cucca F, Ripatti S, Salomaa V, Mohlke KL, Balkau B, Froguel P, Pouta A, Jarvelin MR, Wareham NJ, Bouatia-Naji N, McCarthy MI, Franks PW, Meigs JB, Teslovich TM, Florez JC, Langenberg C, Ingelsson E, Prokopenko I, Barroso I. Large-scale association analyses identify new loci influencing glycemic traits and provide insight into the underlying biological pathways. *Nat Genet*. 2012 Sep;44(9):991-1005. PubMed PMID: 22885924; NIHMSID: UKMS49338; PubMed Central PMCID: PMC3433394. [Edit authors](#)
- Berndt SI, Gustafsson S, Mägi R, Ganna A, Wheeler E, Feitosa MF, Justice AE, Monda KL, Croteau-Chonka DC, Day FR, Esko T, Fall T, Ferreira T, Gentilini D, Jackson AU, Luan J, Randall JC, Vedantam S, Willer CJ, Winkler TW, Wood AR, Workalemahu T, Hu YJ, Lee SH, Liang L, Lin DY, Min JL, Neale BM, Thorleifsson G, Yang J, Albrecht E, Amin N, Bragg-Gresham JL, Cadby G, den Heijer M, Eklund N, Fischer K, Goel A, Hottenga JJ, Huffman JE, Jarick I, Johansson Å, Johnson T, Kanoni S, Kleber ME, König IR, Kristiansson K, Kutalik Z, Lamina C, Lecoeur C, Li G, Mangino M, McArdle WL, Medina-Gomez C, Müller-Nurasyid M, Ngwa JS, Nolte IM, Paternoster L, Pechlivanis S, Perola M, Peters MJ, Preuss M, Rose LM, Shi J, Shungin D, Smith AV, Strawbridge RJ, Surakka I, Teumer A, Trip MD, Tyrer J, Van Vliet-Ostaptchouk JV, Vandenput L, Waite LL, Zhao JH, Absher D, Asselbergs FW, Atalay M, Attwood AP, Balmforth AJ, Basart H, Beilby J, Bonnycastle LL, Brambilla P, Bruinenberg M, Campbell H, Chasman DI, Chines PS, Collins FS, Connell JM, Cookson WO, de Faire U, de Vegt F, Dei M, Dimitriou M, Edkins S, Estrada K, Evans DM, Farrall M, Ferrario MM, Ferrières J, Franke L, Frau F, Gejman PV, Grallert H, Grönberg H, Gudnason V, Hall AS, Hall P, Hartikainen AL, Hayward C, Heard-Costa NL, Heath AC, Hebebrand J, Homuth G, Hu FB, Hunt SE, Hvnönen E, Iribarren

Using citations in SciENcv: large author lists

PRODUCTS MOST CLOSELY RELATED TO THE PROPOSED PROJECT [[Save citations](#)]

My Bibliography ORCID

Sort by: Publication date

- Edelsbrunner H, Guibas L, Preparata RP. Geometry. 1989 October
- Scott RA, Lagou V, Welch RP, Wheeler E, Montasser ME, Luan J, Mägi R, Strawbridge RJ, Rehnberg E, Gustafsson S, Kanoni S, Rasmussen-Torvik LJ, Yengo L, Lecoeur C, Shungin D, Sanna S, Sidore C, Johnson PC, Jukema JW, Johnson T, Mahajan A, Verweij N, Thorleifsson G, Hottenga JJ, Shah S, Smith AV, Sennblad B, Gieger C, Salo P, Perola M, Timpson NJ, Evans DM, Pourcain BS, Wu Y, Andrews JS, Hui J, Bielak LF, Zhao W, Horikoshi M, Navarro P, Isaacs A, O'Connell JR, Stirrups K, Vitart V, Hayward C, Esko T, Mihailov E, Fraser RM, Fall T, Voight BF, Raychaudhuri S, Chen H, Lindgren CM, Morris AP, Rayner NW, Robertson N, Rybin D, Liu CT, Beckmann JS, Willems SM, Chines PS, Jackson AU, Kang HM, Stringham HM, Song K, Tanaka T, Peden JF, Goel A, Hicks AA, An P, Müller-Nurasyid M, Franco-Cereceda A, Folkersen L, Marullo L, Jansen H, Oldehinkel AJ, Bruinenberg M, Pankow JS, North KE, Forouhi NG, ...

Edit Contributors

Save Cancel

[Edit authors](#)

[Edit authors](#)

Kong A, Kumari M, Gigante B, Herder C, Munroe PB, Caulfield M, Antti J, Mangino M, Small K, Miljkovic I, Liu Y, Atalay M, Kiess W, ...

McCarthy MI, Franks PW, Meigs JB, Teslovich TM, Florez JC, Langenberg C, Ingelsson E, Prokopenko I, Barroso I. Large-scale association analyses identify ... loci influencing glycaemic traits and provide insight into the underlying biological pathways. Nat Genet. 2012 Sep;44(9):991-1005. PubMed PMID: 22885924; NIHMSID: UKMS49...; PubMed Central PMCID: PMC3433394.

[Edit authors](#)



Using citations in SciENcv: large author lists

PRODUCTS MOST CLOSELY RELATED TO THE PROPOSED PROJECT [[Save citations](#)]

My Bibliography ORCID

Sort by: Publication date

- Edelsbrunner H, Guibas L. Computational Geometry. 1989 October
- Scott RA, Lagou V, Welch RP, et al. Large-scale association analyses identify new loci influencing glycemic traits and provide insight into the underlying biological pathways. *Nat Genet.* 2012 Sep;44(9):991-1005. PubMed PMID: 22885924; NIHMSID: UKMS49338; PubMed Central PMCID: PMC3433394.

Edit Contributors [X]

Scott RA, Lagou V, Welch RP, et al.

[Save](#) [Cancel](#)

[Hidden from display](#)

[Computational](#)

[Edit authors](#)

go L, Lecoeur C, Lager C, Salo P, Perola M, Timpson NJ, Evans DM, Mihailov E, Fraser RM, Jackson AU, Kang HM, S Oldehinkel AJ, Bruinenbe Kong A, Kumari M, Gigante B, Herder C, Munroe PB, Caulfield M, Antti J, Mangino M, Small K, Miljkovic I, Liu Y, Atalay M, Kiess W, James AL, Rivadeneira F, Uitterlinden AG, Palmer CN, Doney AS, Willemsen G, Smit JH, Campbell S, Polasek O, Bonnycastle LL, Hercberg S, Dimitriou M, Bolton JL, Fowkes GR, Kovacs P, Lindström J, Zemunik T, Bandinelli S, Wild SH, Basart HV, Rathmann W, Grallert H, Maerz W, Kleber ME, Boehm BO, Peters A, Pramstaller PP, Province MA, Borecki IB, Hastie ND, Rudan I, Campbell H, Watkins H, Farrall M, Stumvoll M, Ferrucci L, Waterworth DM, Bergman RN, Collins FS, Tuomilehto J, Watanabe RM, de Geus EJ, Penninx BW, Hofman A, Oostra BA, Psaty BM, Vollenweider P, Wilson JF, Wright AF, Hovingh GK, Metspalu A, Uusitupa M, Magnusson PK, Kyvik KO, Kaprio J, Price JF, Dedoussis GV, Deloukas P, Meneton P, Lind L, Boehnke M, Shuldiner AR, van Duijn CM, Morris AD, Toenjes A, Peyser PA, Beilby JP, Körner A, Kuusisto J, Laakso M, Bornstein SR, Schwarz PE, Lakka TA, Rauramaa R, Adair LS, Smith GD, Spector TD, Illig T, de Faire U, Hamsten A, Gudnason V, Kivimaki M, Hingorani A, Keinanen-Kiukkaanniemi SM, Saaristo TE, Boomsma DI, Stefansson K, van der Harst P, Dupuis J, Pedersen NL, Sattar N, Harris TB, Cucca F, Ripatti S, Salomaa V, Mohlke KL, Balkau B, Froguel P, Pouta A, Jarvelin MR, Wareham NJ, Bouatia-Naji N, McCarthy MI, Franks PW, Meigs JB, Teslovich TM, Florez JC, Langenberg C, Ingelsson E, Prokopenko I, Barroso I. Large-scale association analyses identify new loci influencing glycemic traits and provide insight into the underlying biological pathways. *Nat Genet.* 2012 Sep;44(9):991-1005. PubMed PMID: 22885924; NIHMSID: UKMS49338; PubMed Central PMCID: PMC3433394.

[Edit authors](#)

Using citations in SciENcv: large author lists

The image displays two side-by-side screenshots of the SciENcv interface, specifically the 'PRODUCTS MOST CLOSELY RELATED TO THE PROPOSED PROJECT' section. Both screenshots show the 'ORCID' tab selected. The left screenshot shows a list of citations with a large author list for the entry by Scott RA et al. (2012). A red arrow points to the 'ORCID' tab, and another red arrow points to the 'Edit authors' link at the bottom of the citation. The right screenshot shows a similar view but with a different set of citations, including one by Hoefft KS (2017) and another by Scott RA et al. (2012). A red arrow points to the 'ORCID' tab, and another red arrow points to the 'Edit authors' link for the Scott RA et al. citation.

PRODUCTS MOST CLOSELY RELATED TO THE PROPOSED PROJECT [Save citations]

My Bibliography ORCID Edited

Sort by: Publication date Select: None 3 item(s) selected Refresh the list from ORCID

- de Berg M, Halperin D, Overmars M, Snoeyink J, van Nieuve M. Efficient ray shooting and hidden surface removal. *Journal of Computer Graphics*. 2017 Feb 8;13(1):11. <http://link.springer.com/10.1007/BF01377182> DOI: 10.1007/BF01377182
- Edelsbrunner H, Guibas L, Hershberger J, Seidel R, Sharir M, Snoeyink J, Welzl E. Implicitly representing a Geometry. 1989 October 1; 4(5):433-466. Available from: <http://link.springer.com/10.1007/BF02187742> DOI:
- Scott RA, Lagou V, Welch RP, Wheeler E, Montasser ME, Luan J, Mägi R, Strawbridge RJ, Rehnberg E, Gu Shungin D, Sanna S, Sidore C, Johnson PC, Jukema JW, Johnson T, Mahajan A, Verweij N, Thorleifsson G, M, Timpson NJ, Evans DM, Pourcain BS, Wu Y, Andrews JS, Hui J, Bielik LF, Zhao W, Horikoshi M, Navarr Mihailov E, Fraser RM, Fall T, Voight BF, Raychaudhuri S, Chen H, Lindgren CM, Morris AP, Rayner NW, Ro Jackson AU, Kang HM, Stringham HM, Song K, Tanaka T, Peden JF, Goel A, Hicks AA, An P, Müller-Nurasy Oldehinkel AJ, Bruinenberg M, Pankow JS, North KE, Forouhi NG, Loos RJ, Edkins S, Varga TV, Hallmans (Kong A, Kumari M, Gigante B, Herder C, Munroe PB, Caulfield M, Antti J, Mangino M, Small K, Miljkovic I, L Palmer CN, Doney AS, Willemsen G, Smit JH, Campbell S, Polasek O, Bonnycastle LL, Hercberg S, Dimitric Bandinelli S, Wild SH, Basart HV, Rathmann W, Grallert H, Maerz W, Kleber ME, Boehm BO, Peters A, Pran Watkins H, Farrall M, Stumvoll M, Ferrucci L, Waterworth DM, Bergman RN, Collins FS, Tuomilehto J, Watanabe RM, de Geus EJ, Penninx BW, Norman A, Oostra BA, Psaty BW, Vollenweider P, Wilson JF, Wright AF, Hovingh GK, Metspalu A, Uusitupa M, Magnusson PK, Kyvik KO, Kaprio J, Price JF, Dedoussis GV, Deloukas P, Meneton P, Lind L, Boehnke M, Shuldiner AR, van Duijn CM, Morris AD, Toenjes A, Peyser PA, Beilby JP, Körner A, Kuusisto J, Laakso M, Bornstein SR, Schwarz PE, Lakka TA, Rauramaa R, Assa LS, Smith GD, Spector TD, Illig T, de Faire U, Hamsten A, Gudnason V, Kivimäki M, Hingorani A, Keinanen-Kiukkaanniemi SM, Saaristo TE, Boomsma DI, Stefansson K, van Harst P, Dupuis J, Pedersen NL, Sattar N, Harris TB, Cucca F, Ripatti S, Salomaa V, Mohlke KL, Balkau B, Froguel P, Pouta A, Jarvelin MR, Wareham NJ, Bouatia-Naji MC, McCarthy MI, Franks PW, Meigs JB, Teslovich TM, Florez JC, Langenberg C, Ingelsson E, Prokopenko I, Barroso I. Large-scale association analyses identify new loci influencing glycemic traits and provide insight into the underlying biological pathways. *Nat Genet*. 2012 Sep;44(9):991-1005. PubMed PMID: 22885924; NIHMSID: UKMS49338; PubMed Central PMCID: PMC3433394.
- Berndt SI, Gustafsson S, Mägi R, Ganna A, Wheeler E, Feitosa MF, Justice AE, Monda KL, Croteau-Chonka DC, Day FR, Esko T, Fall T, Ferreira T, Gentilini D, Jackson AU, Luan J, Randall JC, Vedantam S, Willer CJ, Winkler TW, Wood AR, Workalemahu T, Hu YJ, Lee SH, Liang L, Lin DY, Min JL, Neale BM, Thorleifsson G, Yang J, Albrecht E, Amin N, Bragg-Gresham JL, Cadby G, den Heijer M, Eklund N, Fischer K, Goel A, Hottenga JJ, Huffman JE, Jarick I, Johansson A, Johnson T, Kanoni S, Kleber ME, König IR, Kristiansson K, Kutalik Z, Lamina C, Lecoeur C, Li G, Mangino M, McArdle WL, Medina-Gomez C, Müller-Nurasyid M, Ngwa JS, Nolte IM, Paternoster L, Pechlivanis S, Perola M, Peters MJ, Preuss M, Rose LM, Shi J, Shungin D, Smith AV, Strawbridge RJ, Surakka I, Teumer A, Trip MD, Tyrer J, Van Vliet-Ostapchouk JV, Vandenput L, Waite LL, Zhao JH, Absher D, Auerbach O, Beilby J, Bevilacqua L, Borch-Johnsen K, Bruinenberg M, Campbell H, Chines P, Cookson D, Collins

(edited) Edit authors

PRODUCTS MOST CLOSELY RELATED TO THE PROPOSED PROJECT [Save citations]

My Bibliography ORCID Edited

Sort by: Publication date Select: None 0 item(s) selected Refresh the list from ORCID unchecked entries are hidden from display

- Hoefft KS. An ethnographic study of salt use and humoral concepts in a Latino farm worker community in California's Central Valley. *J Ethnobiol Ethnomed*. 2017 Feb 8;13(1):11. PubMed PMID: 28178991; PubMed Central PMCID: PMC5299697. [Remove from tab](#)
- Scott RA, Lagou V, Welch RP, et al. Large-scale association analyses identify new loci influencing glycemic traits and provide insight into the underlying biological pathways. *Nat Genet*. 2012 Sep;44(9):991-1005. PubMed PMID: 22885924; NIHMSID: UKMS49338; PubMed Central PMCID: PMC3433394. [Remove from tab](#)
- Berndt SI, Gustafsson S, Mägi R, Ganna A, Wheeler E, Feitosa MF, et al. Genome-wide meta-analysis identifies 11 new loci for anthropometric traits and provides insights into genetic architecture. *Nat Genet*. 2013 May;45(5):501-12. PubMed PMID: 23563607; NIHMSID: NIHMS536922; PubMed Central PMCID: PMC3973018. [Remove from tab](#)

Using citations in SciENcv: large author lists

PRODUCTS MOST CLOSELY RELATED TO THE PROPOSED PROJECT [[Select citations](#)]

1. Edelsbrunner H, Guibas L, Hershberger J, Seidel R, Sharir M, Snoeyink J, Welzl E. Implicitly representing arrangements of lines or segments. *Discrete & Computational Geometry*. 1989 October 1; 4(5):433-466. Available from: <http://link.springer.com/10.1007/BF02187742> DOI: 10.1007/BF02187742
2. Scott RA, Lagou V, Welch RP, et al. Large-scale association analyses identify new loci influencing glycemic traits and provide insight into the underlying biological pathways. *Nat Genet*. 2012 Sep;44(9):991-1005. PubMed PMID: 22885924; NIHMSID: UKMS49338; PubMed Central PMCID: PMC3433394.
3. Berndt SI, Gustafsson S, Mägi R, Ganna A, Wheeler E, Feitosa MF, Justice AE, Monda KL, Croteau-Chonka DC, Day FR, Esko T, Fall T, Ferreira T, Gentilini D,

SciENcv Biosketch Forms

Profile name: Bart Trawick NIH Biosketch format [\[Edit \]](#) **Download:** [PDF](#) [Word](#) [XML](#)

Profile type: NIH BioSketch [NIH Biographical Sketch Instructions \(PDF\)](#)

Last Updated: 30 November 2017

Sharing: Public. Share via this URL:

NIH Biosketch

NAME [\[Edit \]](#)
Trawick, Barton

eRA COMMONS ID trawick

ORCID ID <http://orcid.org/0000-0002-3635-3508>

EDUCATION/TRAINING [\[Edit entries \]](#)

(Begin with baccalaureate or other initial professional education, such as nursing, including postdoctoral training.)

INSTITUTION AND LOCATION	DEGREE (if applicable)
Texas A&M University, College Station, TX	BACHELOR OF /
University of Texas Health Science Center at Houston, Houston, TX	MASTER OF SCI
University of Texas Health Science Center at Houston, Houston, TX	DOCTOR OF PHILC

Profile name: NSF-orcid [\[Edit \]](#) **Download:** [PDF](#) [XML](#)

Profile type: NSF Biosketch [NSF Biographical Sketch Instructions](#)

Last Updated: 9 July 2019

Sharing: Private [\[Change \]](#)

OMB-3145-0058

NSF Biosketch

NAME [\[Edit \]](#)
Trawick, Bart

ORCID ID <http://orcid.org/0000-0002-3635-3508>

A. PROFESSIONAL PREPARATION [\[Edit entries \]](#)

List undergraduate and graduate education and postdoctoral training. List the year the degree was received as well as inclusive dates of postdoctoral training.

INSTITUTION	LOCATION	MAJOR/AREA OF STUDY	DEGREE (if applicable)	YEAR
Texas A&M University	College Station, TX, US	Chemistry		1992
University of Texas Health Science Center at Houston	Houston, TX, US	Biochemistry	MASTER OF SCIENCE	1996
University of Texas Health Science Center at Houston	Houston, TX, US	Immunology	DOCTOR OF PHILOSOPHY	2000

SciENcv Biosketch Output

NIH Biosketch

NSF Biosketch

OMB No. 0925-0001 and 0925-0002 (Rev. 09/17 Approved Through 03/31/2020)

BIOGRAPHICAL SKETCH
Provide the following information for the Senior/key personnel. Follow this format for each person. Do not include titles and provide insight into the underlying biological pathways.

NAME: Trawick, Bart
eRA COMMONS USER NAME (credential, e.g., agency):
POSITION TITLE: Director, Customer Services Division
EDUCATION/TRAINING (Begin with baccalaureate or other undergraduate degree, include postdoctoral training and residency training if applicable):
INSTITUTION AND LOCATION:
Texas A&M University, College Station, TX
University of Texas Health Science Center, Houston, TX
University of Texas Health Science Center, Houston, TX

A. Personal Statement
I work to promote access to government-funded science

1. Database resources of the National Center for Biotechnology Information. Nucleic Acids Res. 2001 Nov 16;29(22):E146-51. PubMed PMID: [29140470](#); PubMed Central PMCID: [PMC132369](#).
2. Database resources of the National Center for Biotechnology Information. Nucleic Acids Res. 2001 Nov 16;29(22):E146-51. PubMed PMID: [26615191](#); PubMed Central PMCID: [PMC132369](#).
3. Database resources of the National Center for Biotechnology Information. Nucleic Acids Res. 2001 Nov 16;29(22):E146-51. PubMed PMID: [26615191](#); PubMed Central PMCID: [PMC132369](#).

B. Positions and Honors

Positions and Employment

Year	Position	Institution
2002 - 2005	Staff Scientist, Bookshelf project, National Center for Biotechnology Information	Bethesda, MD
2005 - 2009	Project Supervisor, NIHMS, National Center for Biotechnology Information	MD
2009 - 2017	Public Services Section, National Center for Biotechnology Information	MD
2017 -	Director, Customer Services Division, National Center for Biotechnology Information	Bethesda, MD

Other Experience and Professional Memberships

Honors

Year	Award	Institution
2004	NLM Special Achievement Award, National Center for Biotechnology Information	National Center for Biotechnology Information
2008	National Institutes of Health Director's Award, National Institutes of Health	National Institutes of Health
2009	NLM Special Achievement Award, National Center for Biotechnology Information	National Center for Biotechnology Information
2009	National Institutes of Health Merit Award, National Institutes of Health	National Institutes of Health
2011	NLM Special Achievement Award, National Center for Biotechnology Information	National Center for Biotechnology Information

```
<citations>
<citation type="journal" id="1065150">
<title>Large-scale association analyses identify new loci influencing glycemic traits and provide insight into the underlying biological pathways.</title>
<bibliographydates>
<bibliographydate type="display">2012 Sep</bibliographydate>
</bibliographydates>
<contributors>
<displaylist>Scott RA, Lagou V, Welch RP, et al.</displaylist>
<contributor type="author">Scott RA</contributor>
<contributor type="author">Lagou V</contributor>
<contributor type="author">Welch RP</contributor>
<contributor type="author">Wheeler E</contributor>
<contributor type="author">Montasser ME</contributor>
<contributor type="author">Luan J</contributor>
<contributor type="author">Mägi R</contributor>
<contributor type="author">Strawbridge RJ</contributor>
<contributor type="author">Rehnborg E</contributor>
<contributor type="author">Gustafsson S</contributor>
<contributor type="author">Kanoni S</contributor>
<contributor type="author">Rasmussen-Torvik LJ</contributor>
<contributor type="author">Yengo L</contributor>
<contributor type="author">Lecoeur C</contributor>
<contributor type="author">Shungin D</contributor>
<contributor type="author">Sanna S</contributor>
<contributor type="author">Sidore C</contributor>
<contributor type="author">Johnson PC</contributor>
<contributor type="author">Jukema JW</contributor>
<contributor type="author">Johnson T</contributor>
<contributor type="author">Mahajan A</contributor>
<contributor type="author">Verweij N</contributor>
<contributor type="author">Thorleifsson G</contributor>
<contributor type="author">Hottenga JJ</contributor>
<contributor type="author">Shah S</contributor>
<contributor type="author">Smith AV</contributor>
<contributor type="author">Sennblad B</contributor>
<contributor type="author">Gieger C</contributor>
<contributor type="author">Salo P</contributor>
<contributor type="author">Perola M</contributor>
<contributor type="author">Timpson NJ</contributor>
<contributor type="author">Evans DM</contributor>
<contributor type="author">Pourcain BS</contributor>
<contributor type="author">Wu Y</contributor>
<contributor type="author">Andrews JS</contributor>
<contributor type="author">Hui J</contributor>
<contributor type="author">Bielak LF</contributor>
<contributor type="author">Zhang W</contributor>
</contributors>
</citation>
</citations>
```

NSF BIOGRAPHICAL SKETCH

3508

POSITION TITLE: Staff Scientist, National Institutes of Health

EDUCATION

Year	Location	Major / Area of Study	Degree (if applicable)	Year YYYY
1992	College Station, TX	Chemistry	BA	1992
1996	Houston, TX	Biochemistry	MS	1996
2000	Houston, TX	Immunology	PHD	2000

Staff Scientist, National Institutes of Health, National Library of Medicine, Bethesda, MD

Related to the Proposed Project

FS, Machado FP, Paploski IAD, Martins TF, Teider-Junior PI, Serpa R, Barros-Filho IR, Lipinski LC, P Dos Santos A, Labruna MB, Serosurvey of anti-Rickettsia spp. antibodies in wild boars (Sus scrofa), of Brazil. PLoS Negl Trop Dis. 2019 May;13(5):e0007405. PubMed Central PMCID: [PMC6542515](#).

RA, Nagy ZS, Trawick BW, Wang M, Tejpal N, Wang ME, Tian L, The role of SLC5 in the induction of regulatory T cells in transplantation. Proc. 2001 Nov Dec;33(7-8):3835-6. PubMed PMID: [11750634](#).

the National Center for Biotechnology Information. Nucleic Acids Res. 2001 Nov 16;29(22):E146-51. PubMed PMID: [27899561](#); PubMed Central PMCID: [PMC132369](#).

Not Related to the Proposed Project

am GS, Guha R, Brimacombe K, Grossman A, Chung TDY, Weidner D, Dahlin JL, Devanaryan V, Foley TL, McGee J, Kahl SD, Kales S, Gal-Edd N, Glicksman M, Haas JV, Iversen PW, Hoepfner M, H, Trawick B, McVey J, Lemmon VP, Li Z, McManus O, Minor L, Pacifici R, Chin WW, Xia M, Xu X, Lal-Nag M, Hall MD, Michael S, Austin CP. Assay Guidance Manual: Quantitative Biology and Clinical Drug Discovery. Clin Transl Sci. 2018 Sep;11(5):461-470. PubMed Central PMCID: [PMC6132369](#).

the National Center for Biotechnology Information. Nucleic Acids Res. 2001 Nov 16;29(22):E146-51. PubMed PMID: [29140470](#); PubMed Central PMCID: [PMC132369](#).

SciENcv: NSF Current & Pending Support

Current and Pending Support
✕

Current Pending Submissic

Project / Proposal Title * COVID-19 infe

Proposal / Award Number (if available)

Source of Support * NIH

Primary Place of * Performance Bethesda, MD

Project Proposal Support Start Date (if available) 12 2020

Total award amount * \$ 1500000 (including Indirect Costs)

Person-Month(s) or (Partial Person-Months) Per Year 2021

+ Add year

Save Save & add another entry Cai

Current and Pending Support Summary

PROJECT/PROPOSAL INFORMATION

Current and Pending Support includes all resources made available to an individual in support of and/or related to all of his whether or not they have monetary value. [1] Information must be provided about all current and pending support, includi for any proposals currently under consideration from whatever source [2], irrespective of whether such support is provided provided directly to the individual. Concurrent submission of a proposal to other organizations will not prejudice its review

[1]If the time commitment or dollar value is not readily ascertainable, reasonable estimates should be provided.

[2]For example, Federal, State, local, foreign, public or private foundations, non-profits, industrial or other commercial org toward specific projects.

[3]The Biological Sciences Directorate exception to this policy is delineated in PAPPG Chapter II.D.2.

IN-KIND CONTRIBUTION INFORMATION

Current and Pending Support also includes in-kind contributions (such as office/laboratory space, equipment, supplies, emy contributions are intended for use on the project being proposed to NSF, the information must be included as part of the Fa section of the proposal and need not be replicated in the individual's Current and Pending Support submission. In-kind con project/proposal being proposed that have associated time obligations must be reported below. If the time commitment or reasonable estimates should be provided.

Project/Proposal Title	Source of Support	Status of Status	Total Award Amount
COVID-19 infection vectors	NIH	Current	\$1500000
COVID-19: Cardiac impacts	AHA	Current	\$125000

Add Project/Proposal
Add In-Kind Contribution

NSF CURRENT AND PENDING SUPPORT

PI/co-PI/Senior Personnel: Trawick, Barton

PROJECT/PROPOSAL CURRENT SUPPORT

- Project/Proposal Title: COVID-19 infection vectors
 Proposal/Award Number (if available):
 Source of Support: NIH
 Primary Place of Performance: Bethesda, MD
 Project/Proposal Support Start Date (if available): 2020/12
 Project/Proposal Support End Date (if available): 2024/12
 Total Award Amount (including Indirect Costs): \$1,500,000
 Person-Month(s) (or Partial Person-Months) Per Year Commitment

Year	Person-months per year committed
2021	12

- Project/Proposal Title: COVID-19: Cardiac impacts
 Proposal/Award Number (if available): 12345
 Source of Support: AHA
 Primary Place of Performance: Bowling Green, KY
 Project/Proposal Support Start Date (if available):
 Project/Proposal Support End Date (if available):
 Total Award Amount (including Indirect Costs): \$125,000
 Person-Month(s) (or Partial Person-Months) Per Year Commitment

Year	Person-months per year committed
2020	1

```

1 <?xml version="1.0" encoding="utf-8"?>
2 <profile xmlns="http://www.ncbi.nlm.nih.gov/sciencv"
3   xmlns:xsi="http://www.w3.org/2001/XMLSchema-instance"
4   xmlns:nsf="http://www.ncbi.nlm.nih.gov/sciencv/nsf"
5   xsi:schemaLocation="http://www.ncbi.nlm.nih.gov/sciencv
6   http://api.ncbi.nlm.nih.gov/sciencv/schema/sciencv.1.7.xsd" accessIon="5CV352395.3">
7   <identification>
8     <name current="yes">
9       <givennames>Barton</givennames>
10      <surname>Trawick</surname>
11    </name>
12    </identification>
13    <education/>
14    <employment/>
15    <funding xmlns:nsf="http://www.ncbi.nlm.nih.gov/sciencv/nsf">
16      <nsf:projecttitle>COVID-19 infection vectors</nsf:projecttitle>
17      <nsf:awardnumber/>
18      <nsf:supportsource>NIH</nsf:supportsource>
19      <nsf:location>Bethesda, MD</nsf:location>
20      <nsf:contributions>awards</nsf:contributions/>
21      <nsf:awardamount>1500000</nsf:awardamount>
22      <nsf:linkindescription/>
23      <nsf:startdate>2020-12-01</nsf:startdate>
24      <nsf:enddate>2024-12-28</nsf:enddate>
25      <nsf:supporttype>current</nsf:supporttype>
26      <nsf:commitment>
27        <nsf:personmonth year="2021">12</nsf:personmonth>
28      </nsf:commitment>
29    </funding>
30    <distinctions/>
31    <contributions>
32      <nsf:projecttitle>COVID-19: Cardiac impacts</nsf:projecttitle>
33      <nsf:awardnumber>12345</nsf:awardnumber>
34      <nsf:supportsource>AHA</nsf:supportsource>
35      <nsf:location>Bowling Green, KY</nsf:location>
36      <nsf:contributions>awards</nsf:contributions/>
37      <nsf:awardamount>125000</nsf:awardamount>
38      <nsf:linkindescription/>
39      <nsf:supporttype>current</nsf:supporttype>
40      <nsf:commitment>
41        <nsf:personmonth year="2020">1</nsf:personmonth>
42      </nsf:commitment>
43    </contributions>
44    <memberships/>
45    </contributions>
46    <statements/>
47  </profile>
```

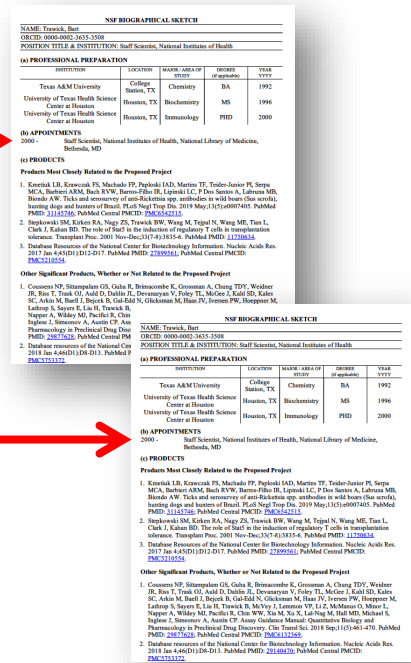
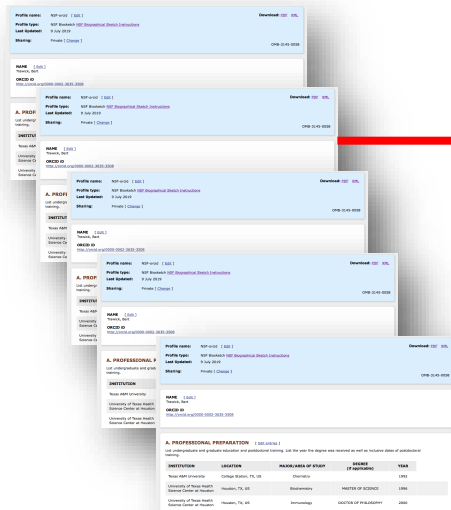
XML attachment

SciENcy Features

Create & store multiple biosketches plus C&PS forms

Output PDFs on demand

Have a delegate manage accounts



From scratch, from a data source, or copied from an existing biosketch

More information

- SciENCv is available at:
<http://www.ncbi.nlm.nih.gov/sciencv>
- My NCBI documentation:
<http://www.ncbi.nlm.nih.gov/books/NBK3843/>
- SciENCv video overview:
<http://youtu.be/PRWy-3GXhtU>
- SciENCv for NSF Users: Biographical Sketches:
<https://youtu.be/nk7qlbele0k>
- SciENCv for NSF Users: Current and Pending Support
<https://youtu.be/bhWQYvEEtJs>

SciENCv questions/feedback: info@ncbi.nlm.nih.gov

NSF Login and usage questions: 1-800-381-1532 or rgov@nsf.gov

NSF Policy questions: policy@nsf.gov

New Award Notice PI Transfers



New Award Notices

- Multi-Year Project to Modernize NSF's Awards System
- Slowly Migrated New Functionality and Other Notices
 - ✓ No Cost Extensions – March 2018
 - ✓ Other Administrative Actions – June 2018
 - ✓ Post-Award Funding Actions – April 2019
 - ✓ New and Renewal Awards – January 2020
 - ✓ Award Cancellations – March 2020
 - ✓ Award Reductions – June 2020



New Award Notices – PI Transfers

- Same Standard, Consistent Layout
- No Longer a Letter
- Copy Sent to PI and co-PI(s)
- Clearly Identifies Information by Section

Scheduled for Release in late November 2020





Next Steps and ERA Forum Resources

Post-webinar Survey

- <https://www.surveymonkey.com/r/ERAForumSurveyNovember2020>

ERA Forum Email

- Questions pertaining to the presentation can be sent to nsferaforum@nsf.gov
- If you are interested in participating in future application usability studies, please send an email with your contact information to nsferaforum@nsf.gov

Subscribe to ERA Forum Listserv

- Send an email to Nsf-era-forum-subscribe-request@listserv.nsf.gov

NSF ERA Forum Website:

- Agenda and presentation slides will be available soon on the ERA Forum website at: https://www.nsf.gov/bfa/dias/policy/era_forum.jsp.



**Thank you for participating in today's ERA Forum
Webinar**



Appendix



Research.gov Demo Screenshots



Demo: Create New Proposal Wizard

My Desktop > Proposal Preparation > Create New Proposal

Create New Proposal

1. Funding Opportunity ▼ 2. Where to Apply ▼ 3. Proposal Type 4. Submission Type 5. Title & Collaborative Info

Select Proposal Type

What type of proposal will be used? ⓘ

- Research
- Rapid Response Research (RAPID) Proposals
- Early-concept Grants for Exploratory Research (EAGER)
- Research Advanced by Interdisciplinary Research and Engineering (RAISE)
- Grant Opportunities for Academic Liaison with Industry (GOALI)
- Ideas Lab
- Facilitation Awards for Scientists and Engineers with Disabilities (FASERD)
- Conferences
- Equipment
- Travel
- NSF Center Proposals
- Major Research Equipment and Facility Construction Proposals
- Fellowship

Previous Next

- Indicator shows required proposal setup process steps that address current frustrations with the FastLane Cover Sheet module
- User chooses the applicable proposal type
- The choices shown here will be customized to the funding opportunity



Demo: Main Proposal Page

Proposal Title: Demo Proposal [✎](#)

Funding Opportunity: NSF 17-559 [✎](#) - Innovation Corps - National Innovation Network Teams Program (I-Corps™ Teams)

Where to Apply: Directorate For Engineering (ENS) - Div Of Industrial Innovation & Partnersh (IIP), I-Corps

Proposal Type: Research

Submission Type: Full Proposal

Proposal Deadline Date ⓘ
Accepted Anytime

Proposal Sections	Last Updated	Compliance Status
Required		
Cover Sheet	10/18/2017 10:20 AM EDT	Not checked
Project Summary		Not checked
Project Description		Not checked
References Cited		Not checked
Data Management Plan		Not checked
Postdoctoral Mentoring Plan ⓘ <i>Conditionally required</i>		Not checked
Senior Personnel Documents ⓘ		Not checked
Facilities, Equipment and Other Resources		Not checked
Budget(s)	10/18/2017 10:20 AM EDT	Not checked
Budget Justification(s)		Not checked
Optional		
Other Personnel Biographical Information ⓘ		Not checked
List of Suggested Reviewers ⓘ		Not checked
List of Reviewers ⓘ		Not checked

• Inline edit of the title

• Quick view and access to the due date of the proposal

• Conditionally required sections become required after corresponding data is input

• Required and optional sections are driven dynamically based on the funding opportunity selected

• Add and Remove Co-PIs, Senior Personnel, and OAUs
• Quick access to link collaborative proposals



Demo: Document Upload and Compliance Error/Warning Messages

My Desktop Prepare & Submit Proposals Awards & Reporting Manage Fin

Hide Menu
Proposal - 2212
Required
Cover Sheet
Project Summary
Project Description
References Cited
Data Management Plan
Postdoctoral Mentoring Plan
Senior Personnel Documents
Facilities, Equipment & Other Resources
Collaboration Plan
Management Plan
Budgets
Budget Justification
Deviation Authorization
Optional

My Desktop > Proposal Preparation > Proposal - 2212 > Project Summary

Project Summary

• Your file contains an unallowable font type. Please update your file and try uploading it again. ✕

• Your file does not include the required document section heading of Broader Impacts. Please update your file and try uploading it again. ✕

• Your file contains a left document margin that is less than one inch. Please update your file and try uploading it again. ✕

Instructions to upload Project Summary:

- Only 1 document can be uploaded
- Accepted file types include: Adobe PDF
- Your file must include three separately labeled sections: Overview, Intellectual Property, and Broader Impacts
- Text cannot exceed 1 page - Proposal margin and spacing requirements (PDF)
- Max file size permitted is 10MB

Browse for file to upload Browse ...

Preview/Print

- Immediate feedback on compliance of all documents that are uploaded to the system
- Documents are inspected to ensure machine-readable text for analysis
- Documents are stored on cloud-hosted storage to ensure availability of proposals and scalability for future proposals



Demo: Separately Submitted Collaborative Proposals

My Desktop	Prepare & Submit Proposals	Awards & Reporting	Manage Financials	Administration
------------	----------------------------	--------------------	-------------------	----------------

Attention: Research.gov currently supports preparation and submission of research proposals including collaborative proposals. View the [Research.gov Proposal System Release Timeline](#) for more information.

My Desktop > Proposal Preparation > Prepare New Proposal

Prepare New Proposal

1. Funding Opportunity ✓ 2. Where to Apply ✓ 3. Proposal Type ✓ 4. Submission Type ✓ 5. Proposal Details ✓

Proposal Details

What type of proposal are you submitting?

- Single proposal (with or without subawards)
- Separately submitted collaborative proposal ⓘ

What is your role on this project? ⓘ [How to link proposals](#)

- Lead proposer ⓘ [Details](#)
- Non-lead proposer

Proposal Title

Collaborative Research: This is the Lead Proposal Title. It will be reflected on all non-leads

94 of 180 characters

[Previous](#) [Prepare Proposal](#)

- Collaborative Research will be pre-fixed to the title



Demo: Separately Submitted Collaborative Proposals - Linking

My Desktop > Proposal Preparation > Proposal - 15080

Proposal - 15080

Proposal Title: Collaborative Research: This is the Lead Proposal Title. It will be reflected on all non-leads [✕](#)

Funding Opportunity: NSF 19-1 [✕](#) - Proposal & Award Policies & Procedures Guide - PAPPG

Where to Apply: Office Of The Director (O/D) - EPSCoR Section (OIA), Gen Admin Cost-AOAM-OIG-NSB

Proposal Type: Research

Submission Type: Full Proposal

Collaborative Type: Separately submitted by multiple organizations (Lead proposal)

Due Date: Accepted Anytime [📅 Date Types](#)

1 [Link/View Collaborative Proposals](#)

2 Link Collaborative Proposals

Enter the Temporary ID Number [📌](#) of the non-lead proposal you want to link to:

Temporary ID Number

Note: Once proposals are linked, the Principal Investigator's contact information will be shared.

[Send Link Request](#) [Cancel](#)

3 You have successfully invited Proposal - 15081 to link their proposal and accepts the link.

Collaborative Proposals [Link Collaborative Proposals](#)

Temporary ID Number	Principal Investigator	Organization	Proposal Status	Actions
Link request pending: 📌 15081	Sally Subawardco-Pi	Mainstream Engineering Corporation		Cancel Link Request

Collaborative Research will pre-fixed to the title



Demo: Separately Submitted Collaborative Proposals - Non-lead

Proposal - 15081

Upon acceptance of the link request by the non-lead proposal, this proposal will inherit the following information from the lead proposal: Proposal Title, Funding Opportunity, Where to Apply, Proposal Type, Submission Type and Due Date. Give the lead organization your proposal's Temporary ID Number - 15081 so the lead organization can send you an online proposal link request.

Proposal Title: Collaborative Research: This title will be replaced by Lead title
Funding Opportunity: NSF 20-520 - EarthCube:
Where to Apply: Directorate For Geosciences (GEO) - ICER (ICER), EarthCube
Proposal Type: Research
Submission Type: Full Proposal
Collaborative Type: Separately submitted by multiple organizations (Non-lead proposal)

Due Date: Inherited from the Lead Proposal
 Date Types

Provide the lead organization with the temp prop ID

Fewer required sections

Proposal Actions

- Share Proposal with SPO/AOR
- Manage Personnel and Subaward Organizations
- Link/View Collaborative Proposals
- Print Proposal
- Delete Proposal

Proposal Details

Proposal Status: Not Shared with SPO/AOR

Helpful Links
 View submitted proposals

Proposal Sections	Last Updated	Compliance Status [Key]
Required		
Cover Sheet		Form not checked
Budget(s)		Form not checked
Budget Justification(s)		Document unavailable for check
Facilities, Equipment and Other Resources		Document unavailable for check
Senior Personnel Documents		Document(s) unavailable for check
Optional		
Other Personnel Biographical Information		Document unavailable for check
Other Supplementary Documents		Document unavailable for check
List of Suggested Reviewers (Single-copy document)		Document unavailable for check
List of Reviewers Not to Include (Single-copy document)		Document unavailable for check



Demo: Separately Submitted Collaborative Proposals - Non-lead

My Desktop > Proposal Preparation > In Progress Proposals

In Progress Proposals

One or more requests to collaborate need attention. Please view the proposal(s) to accept or reject the link request(s).

Temporary ID Number	Proposal Title	PI Name	Due Date
Link request pending: 15081	Collaborative Research: This title will be replaced by Lead title	Subawardco-Pi, Sally	Date inherited from the Lead Proposal
13378	Wednesday, January 29	Pi, Paula	02/11/2020
13383	Working Group Demo 1302020	Pi, Paula	02/11/2020
14340	Merit Review Test	Pi, Paula	Accepted Anytime
13353	Testing Demo 1-16-2020 Change 2	Pi, Paula	Accepted Anytime

Link requests are automatically at the top

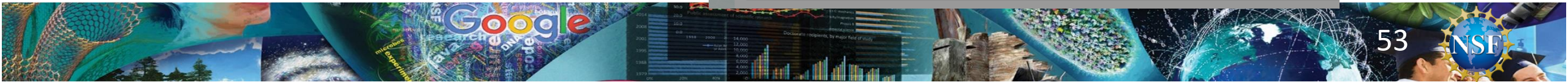
Once link is accepted, non-lead cannot unlink. Must contact the lead

Link Collaborative Proposals Request

The following proposal is requesting to link to your proposal 15081:

Temporary ID Number: 15080
Proposal Title: Collaborative Research: This is the Lead Proposal Title. It will be reflected on all non-leads
Principal Investigator: Paula Pi
Organization: Cornell University

Accept Link Request Reject Link Request Decide Later



Demo: Separately Submitted Collaborative Proposals - Non-lead

My Desktop > Proposal Preparation > Proposal - 15081

Proposal - 15081

✔ You have successfully linked to Proposal - 15080. Additional details can be viewed from [Link/View Collaborative Proposals](#).

Proposal Title: Collaborative Research: This is the Lead Proposal Title. It will be reflected on all non-leads
Funding Opportunity: [NSF 19-1](#) - Proposal & Award Policies & Procedures Guide - PAPPG
Where to Apply: Office Of The Director (O/D) - EPSCoR Section (OIA), Gen Admin Cost-AOAM-OIG-NSB
Proposal Type: Research
Submission Type: Full Proposal
Collaborative Type: Separately submitted by multiple organizations (Non-lead proposal)

Due Date: Accepted Anytime
 ⓘ Date Types

Proposal Actions	Proposal Sections	Last Updated	Compliance Status [Key]
Share Proposal with SPO/AOR Manage Personnel and Subaward Organizations Link/View Collaborative Proposals Print Proposal Delete Proposal	Required		
	Cover Sheet		Form not checked
	Budget(s)		Form not checked
	Budget Justification(s)		Document unavailable for check
	Facilities, Equipment and Other Resources		Document unavailable for check
	Senior Personnel Documents ⓘ		Document(s) unavailable for check
	Optional		
	Other Personnel Biographical Information ⓘ		Document unavailable for check
	Other Supplementary Documents		Document unavailable for check
	List of Suggested Reviewers (Single-copy document ⓘ)		Document unavailable for check

Proposal Details
 ⓘ **Proposal Status:** Not Shared with SPO/AOR

Once linked, non-lead will inherit Title, Funding Opportunity, Where to Apply (units of consideration), Proposal Type, Submission Type, and Due Date



Demo: Senior Personnel Documents

My Desktop Prepare & Submit Proposals Awards & Reporting Manage Financials Administration

Attention: Research.gov's new proposal preparation system is now available for preparing and submitting **full research non-collaborative proposals** and **collaborative proposals with subawards** (Other system capabilities). If you do not see an in progress proposal, have a PI at your organization create a proposal and grant the SPO/AOR access. Proposals prepared in FastLane will continue to be available from FastLane.

My Desktop > Proposal Preparation > Proposal - 4832 > Senior Personnel Documents

Senior Personnel Documents

Show: All Organizations Manage Organizations and Personnel

Personnel Name	Role	Organization (Prime/Subaward)
Pi Test		
	Principal Investigator	Cornell University (Prime)
Documents		
Last Updated		
Compliance Status [Key]		
Biographical Sketch		Document unavailable for check
Current and Pending Support		Document unavailable for check
Collaborators and Other Affiliations (Single-copy document ⓘ)		Document unavailable for check
+ Co-Pi Prime Test	co-Principal Investigator	Cornell University (Prime)
+ Co-Pi Subaward Test	co-Principal Investigator	Mainstream Engineering Corporation (Subaward)

Hide Menu

- Proposal - 4832
- Manage Organizations and Personnel
- Required
 - Cover Sheet
 - Project Summary
 - Project Description
 - References Cited
 - Justification(s)
- Facilities, Equipment and Other Resources
- Senior Personnel Documents
- Data Management Plan
- Optional
 - Other Personnel Biographical Information

• All documents required for senior personnel are consolidated on one screen

• Subaward Sr Personnel



Demo: Budget

My Desktop > Proposal Preparation > Proposal - 4832 > Budget(s)

Budget(s)

Manage Organizations and Personnel

Prime Organization

Budget for:	Principal Investigator	Total Requested Amount ⓘ	Compliance Status [Key]
Cornell University	Pi Test	\$22,105	Not yet available

Subaward Organization(s)

Budget for:	Subaward Requested Amount	Compliance Status [Key]
Mainstream Engineering Corporation	\$100	Not yet available

- Subaward organization budget listed here



Demo: Budget

My Desktop > Proposal Preparation > Proposal - 51 > Budget(s)

Budget(s)

For Virginia Polytechnic Institute and State University ⓘ

\$161,200
Total Requested Amount

More years have been added than can fit in the table. Click the arrows in the table headers or total rows to view the remaining years. Total funds requested will continue to show the total for all years in the budget. To view additional years simultaneously, you may hide the page's left navigation menu.

Expand all rows | Collapse all rows Years in budget: 2 **Add Year** **Delete Year**

Personnel Direct Costs

Section	Year 1			Year 2			Total Funds Requested
	# Personnel	Months	Funds	# Personnel	Months	Funds	
A. Senior Personnel [Manage]	1	1.00	\$70,000	1	1.00	\$70,000	\$140,000
Ricky I Researcher (PI)	1		\$ 70,000	1		\$ 70,000	\$140,000
B. Other Personnel ⓘ	11		\$10,100	11		\$10,100	\$20,200
Postdoctoral Scholars ⓘ	1	12	\$ 10,000	1	12	\$ 10,000	\$20,000
Other Professionals	0	0.00	\$ 0	0	0.00	\$ 0	\$0
Graduate Students	10		\$ 100	10		\$ 100	\$200
Undergraduate Students	0		\$ 0	0		\$ 0	\$0
Administrative/Clerical	0		\$ 0	0		\$ 0	\$0
Other	0		\$ 0	0		\$ 0	\$0
C. Fringe Benefits			\$0			\$0	\$0

- All totals are dynamically summed and the total amount is placed on the Cover Sheet

- Multiple years displayed on one screen

- Rows expand and collapse for easy navigation



Demo: Proposal File Update (PFU)

My Desktop > Proposal Preparation > Submitted Proposals

Submitted Proposals

- Proposal File Update (PFU) / Budget Revision
- Withdrawals

Proposal Title	Submit Date	Proposal Number	Temporary ID Number	PI Name	Proposal Status
Automation test submit ready	01/24/2020	2013279	13303	Haslhofer, Robert	Submitted to NSF (Due Date Passed But Prior to Reviewer Assignment)
Automation test submit ready	12/12/2019	2013258	13297	Haslhofer, Robert	Submitted to NSF (Due Date Passed or Assigned for Review)
Automation test submit ready	12/12/2019	2013256	13296	Haslhofer, Robert	Submitted to NSF (Due Date Passed But Prior to Reviewer Assignment)
Automation test submit ready	12/12/2019	2013255	13295	Haslhofer, Robert	Submitted to NSF (Due Date Passed But Prior to Reviewer Assignment)
Automation test submit ready	12/12/2019	2013254	13294	Haslhofer, Robert	Recommended
Automation test submit ready	12/12/2019	2013252	13293	Haslhofer, Robert	Submitted to NSF (Due Date Passed But Prior to Reviewer Assignment)
Automation test submit ready	12/09/2019	2013250	13282	Haslhofer, Robert	Recommended

• Prior to Review Assignment



Demo: PFU

- Prepare Proposal File/Budget Revision

Proposal - 2013256

i Program Officer (PO) information is not yet available, but this page will be updated when the information becomes available. ✕

Proposal Title: Automation test submit ready
Funding Opportunity: [NSF 18-560](#) - Cultural Anthropology Program Senior Research Awards
Where to Apply: Direct For Social, Behav & Economic Scie (SBE) - Division Of Behavioral and Cognitive Sci (BCS), Cultural Anthropology
Proposal Type: Research
Submission Type: Full Proposal **Submit Date:** 12/12/2019
Program Officer (PO): **PO Email:** **PO Phone:**
AOR Name: James E Gotfredson
Collaborative Type: Not Collaborative

Due Date: 01/15/2020
i Date Type: Target

Proposal Actions	Proposal Sections	Last Updated	Compliance Status [Key]
<ul style="list-style-type: none"> Prepare Proposal File Update/Budget Revision Manage Personnel and Subaward Organizations Print Proposal 	Required Cover Sheet Project Summary Project Description References Cited	 12/12/2019 11:22 AM EST 12/12/2019 11:22 AM EST 12/12/2019 11:22 AM EST	Form not checked ✓ No issue(s) found ⚠ Warning(s) ✓ No issue(s) found



Demo: PFU

- Budget Revision Status

My Desktop > Proposal Preparation > Proposal File Update/Budget Revision

Proposal File Update/Budget Revision

For Proposal - 2013256

Proposal Title: Automation test submit ready [✎](#)

Funding Opportunity: NSF 18-560 [✎](#) - Cultural Anthropology Program Senior Research Awards

Where to Apply: Direct For Social, Behav & Economic Scie (SBE) - Division Of Behavioral and Cognitive Sci (BCS), Cultural Anthropology

Proposal Type: Research

Submission Type: Full Proposal

Collaborative Type: Not Collaborative

Due Date: 01/15/2020 [✎](#)
Date Type: Target

[View last submitted version](#)

Proposal Actions	Proposal File Update Form	Last Updated	Compliance Status [Key]
Share Proposal with SPO/AOR	Proposal Update Justification		Form not checked

Proposal Sections	Last Updated	Compliance Status [Key]
Required		
Cover Sheet	02/03/2020 1:17 PM EST	✔ No issue(s) found
Project Summary	02/03/2020 1:17 PM EST	✔ No issue(s) found
Project Description	02/03/2020 1:17 PM EST	⚠ Warning(s)
References Cited	02/03/2020 1:17 PM EST	✔ No issue(s) found
Budget(s)	02/03/2020 1:17 PM EST	✔ No issue(s) found
Budget Justification(s)	02/03/2020 1:17 PM EST	✔ No issue(s) found

Proposal Details

Proposal Status:
PFU/Budget Revision: Not Forwarded to SPO/AOR

- Proposal Update Justification is required if there is a change in proposal content, not budget content



Demo: Budget Revision

My Desktop > Proposal Preparation > Submitted Proposals

Submitted Proposals

✔ The Budget Revision for proposal 13297 has been successfully deleted. Please communicate this change to any other personnel that are involved with the preparation of this Budget Revision. ✕

Proposal File Update (PFU) / Budget Revision
Withdrawals

Proposal Title	Submit Date	Proposal Number	Temporary ID Number	PI Name	Proposal Status
Automation test submit ready	01/24/2020	2013279	13303	Haslhofer, Robert	Submitted to NSF (Due Date Passed But Prior to Reviewer Assignment)
Automation test submit ready	12/12/2019	2013258	13297	Haslhofer, Robert	Submitted to NSF (Due Date Passed or Assigned for Review)

• Assigned for Review



Demo: Budget Revision

• Prepare Proposal File/Budget Revision

Proposal - 2013256

Program Officer (PO) information is not yet available, but this page will be updated when the information becomes available.

Proposal Title: Automation test submit ready
Funding Opportunity: NSF 18-560 - Cultural Anthropology Program Senior Research Awards
Where to Apply: Direct For Social, Behav & Economic Scie (SBE) - Division Of Behavioral and Cognitive Sci (BCS), Cultural Anthropology
Proposal Type: Research
Submission Type: Full Proposal **Submit Date:** 12/12/2019
Program Officer (PO): **PO Email:** **PO Phone:**
AOR Name: James E Gotfredson
Collaborative Type: Not Collaborative

Due Date: 01/15/2020
Date Type: Target

Proposal Actions	Proposal Sections	Last Updated	Compliance Status [Key]
<ul style="list-style-type: none"> Prepare Proposal File Update/Budget Revision Manage Personnel and Subaward Organizations Print Proposal 	Required		
	Cover Sheet		Form not checked
	Project Summary	12/12/2019 11:22 AM EST	✔ No issue(s) found
	Project Description	12/12/2019 11:22 AM EST	⚠ Warning(s)
	References Cited	12/12/2019 11:22 AM EST	✔ No issue(s) found



Demo: Budget Revision

My Desktop > Proposal Preparation > Proposal File Update/Budget Revision > Budget(s) > Budget (Prime Organization)

Budget (Prime Organization)

For New York University ⓘ

\$95
Total Requested Amount

✔ Your budget has saved successfully. ✕

ⓘ A Budget Impact Statement is now available in your proposal sections. The statement is required if the budget is being reduced by 10% or more from the amount originally proposed. ✕

▶ Video: How to Work on a Proposal Budget

Expand all rows | Collapse all rows Years in budget: 1 Add Year Delete Year

Personnel Direct Costs

Section	Year 1			Total Funds Requested
	# Personnel	Months	Funds	
<ul style="list-style-type: none"> A. Senior Personnel [Manage] 	1	1.25	\$55	\$55
Robert Haslhofer (PI)		1.25	\$ 55	\$55

• System will not enforce that the Budget Impact Statement exists if the budget is reduced by 10%

