

**STATE OF CALIFORNIA  
CALIFORNIA REGIONAL WATER QUALITY CONTROL BOARD  
CENTRAL COAST REGION**

**GENERAL WASTE DISCHARGE REQUIREMENTS  
FOR  
DISCHARGES FROM IRRIGATED LANDS**

**ORDER NO. R3-2021-0040**

**April 15, 2021**

**ORDER**

## Table of Contents

Part 1, Section A. Findings.....	1
<b>Background and Purpose</b> .....	<b>1</b>
<b>Public Participation Process</b> .....	<b>4</b>
<b>Scope of Order</b> .....	<b>7</b>
<b>Enforcement for Noncompliance</b> .....	<b>8</b>
<b>Additional Findings and Regulatory Considerations</b> .....	<b>9</b>
Part 2, Section A. Enrollment, Fees, Termination, General Provisions, and Third- Party Programs ...	11
<b>Enrollment</b> .....	<b>11</b>
<b>Fees</b> .....	<b>13</b>
<b>Termination</b> .....	<b>13</b>
<b>General Provisions</b> .....	<b>13</b>
<b>Order Effectiveness Evaluation</b> .....	<b>15</b>
<b>Third-Party Programs</b> .....	<b>15</b>
Part 2, Section B. Planning, Education, Management Practices, and CEQA.....	19
<b>Farm Water Quality Management Plan (Farm Plan)</b> .....	<b>19</b>
<b>Continuing Education</b> .....	<b>20</b>
<b>Management Practice Implementation and Assessment</b> .....	<b>20</b>
<b>CEQA Mitigation Measure Implementation, Monitoring, and Reporting</b> .....	<b>21</b>
Part 2, Section C.1. Groundwater Protection .....	21
<b>Phasing</b> .....	<b>21</b>
<b>Irrigation and Nutrient Management Plan</b> .....	<b>22</b>
<b>Quantifiable Milestones and Time Schedules</b> .....	<b>23</b>
<b>Monitoring and Reporting</b> .....	<b>29</b>
Part 2, Section C.2. Third-Party Alternative Compliance Pathway for Groundwater Protection .....	31
<b>Quantifiable Milestones and Time Schedules</b> .....	<b>32</b>
<b>Fertilizer Nitrogen Application Targets</b> .....	<b>32</b>
<b>Nitrogen Discharge Targets</b> .....	<b>32</b>
<b>Groundwater Protection Areas, Formulas, Values, and Targets</b> .....	<b>33</b>
<b>Monitoring and Reporting</b> .....	<b>35</b>
Part 2, Section C.3. Surface Water Protection .....	35
<b>Priority Areas (Individual)</b> .....	<b>35</b>
<b>Priority Areas (Third-Party Program)</b> .....	<b>36</b>
<b>Irrigation and Nutrient Management</b> .....	<b>36</b>
<b>Pesticide Management</b> .....	<b>36</b>
<b>Sediment and Erosion Management</b> .....	<b>36</b>
<b>Farm Plan</b> .....	<b>37</b>
<b>Monitoring and Reporting</b> .....	<b>39</b>

Part 2, Section D. Additional Requirements and Prohibitions .....	42
<b>Waste Discharge Control and Prohibitions</b> .....	<b>42</b>
<b>Additional Requirements</b> .....	<b>46</b>
Tables and Figures related to Part 2, Section C.1. Groundwater Protection.....	49
<b>Table C.1-1. Groundwater Phase Areas</b> .....	<b>49</b>
<b>Figure C.1-1: Groundwater Phase Areas</b> .....	<b>50</b>
<b>Table C.1-2. Compliance Dates for Fertilizer Nitrogen Application Limits</b> .....	<b>51</b>
<b>Table C.1-3. Compliance Dates for Nitrogen Discharge Targets and Limits</b> .....	<b>52</b>
Tables and Figures related to Part 2, Section C.2. Third-Party Alternative Compliance Pathway for Groundwater Protection .....	54
<b>Table C.2-1. Compliance Dates for Fertilizer Nitrogen Application Targets (Alternative Compliance Pathway)</b> .....	<b>54</b>
<b>Table C.2-2. Compliance Dates for Nitrogen Discharge Targets (Alternative Compliance Pathway)</b> .....	<b>54</b>
Tables and Figures related to Part 2, Section C.3. Surface Water Protection.....	55
<b>Table C.3-1. Surface Water Priority Areas</b> .....	<b>55</b>
<b>Figure C-3.1: Surface Water Priority Areas</b> .....	<b>56</b>
<b>Table C.3-1.3P. Surface Water Priority Areas (Third-Party Program)</b> .....	<b>57</b>
<b>Figure C-3.1.3P: Surface Water Priority Areas (Third-Party Program)</b> .....	<b>59</b>
<b>Table C.3-2. Compliance Dates for Nutrient Limits (TMDL areas)</b> .....	<b>60</b>
<b>Table C.3-3. Compliance Dates for Nutrient Limits (Non-TMDL areas)</b> .....	<b>64</b>
<b>Figure C.3-2: Nutrient TMDL Areas</b> .....	<b>65</b>
<b>Table C.3-4. Compliance Dates for Pesticide and Toxicity Limits (TMDL areas)</b> .....	<b>66</b>
<b>Table C.3.5. Compliance Dates for Pesticide and Toxicity Limits (Non-TMDL areas)</b> .....	<b>72</b>
<b>Figure C.3-3: Pesticide and Toxicity TMDL Areas</b> .....	<b>74</b>
<b>Table C.3-6. Compliance Dates for Sediment Limits (TMDL areas)</b> .....	<b>75</b>
<b>Table C.3-7. Compliance Dates for Turbidity Limits (Non-TMDL areas)</b> .....	<b>75</b>
<b>Figure C.3-4: Sediment TMDL Areas</b> .....	<b>76</b>

## **Attachments**

Attachment A – Additional Findings and Regulatory Considerations

Attachment B – Monitoring and Reporting Program (MRP)

Attachment C – Acronyms, Abbreviations, and Definitions

## **THE CALIFORNIA REGIONAL WATER QUALITY CONTROL BOARD, CENTRAL COAST REGION FINDS:**

### **Part 1, Section A. Findings**

#### **Background and Purpose**

1. As described in the Water Quality Control Plan for the Central Coastal Basin (Basin Plan), the central coast region of California represents approximately 7.2 million acres of land. There are approximately 540,000 acres of irrigated land and approximately 3,000 agricultural operations that may be generating wastewater that falls into the category of discharges of waste from irrigated lands.
2. The central coast region has more than 17,000 miles of surface waters (linear streams/rivers) and approximately 4,000 square miles of groundwater basins that are, or may be, affected by discharges of waste from irrigated lands. Of the nine hydrologic regions in the state, the central coast region is the most groundwater dependent region with approximately 86% of its water supply being derived from groundwater.
3. The State Water Resources Control Board (State Water Board) and Regional Water Quality Control Boards (Regional Water Boards) are the principal state agencies with primary responsibility for the coordination and control of water quality for the health, safety and welfare of the people of the state pursuant to the Porter-Cologne Water Quality Control Act (Porter-Cologne Act, codified in Water Code Division 7). The legislature, in the Porter-Cologne Act, directed the state, through the Water Boards, to exercise its full power and jurisdiction to protect the quality of the waters in the state from degradation and to attain the highest water quality which is reasonable, considering all demands being made and to be made on those waters and the total values involved, beneficial and detrimental, economic and social, tangible and intangible, and considering precipitation, topography, population, recreation, agriculture, industry, and economic development (Water Code section 13000).
4. Since the issuance of the first Agricultural Order in 2004 and subsequent Agricultural Orders in 2012 and 2017, the California Regional Water Quality Control Board, Central Coast Region (Central Coast Water Board) has compiled additional and substantial empirical data demonstrating that water quality conditions in agricultural areas of the region continue to be severely impaired or polluted by waste discharges from irrigated agricultural operations and activities that impair beneficial uses. The main impacts from irrigated agriculture in the central coast region are nitrate discharges to groundwater and associated drinking water impacts, nutrient discharges to surface water, pesticide discharges

and associated toxicity, sediment discharges, and degradation of riparian and wetland areas and the associated impairment or loss of beneficial uses.

5. The objectives of this Order are:
  - a. Protect and restore beneficial uses and achieve water quality objectives specified in the Basin Plan for commercial irrigated agricultural areas in the central coast region by:
    - i. Minimizing nitrate discharges to groundwater,
    - ii. Minimizing nutrient discharges to surface water,
    - iii. Minimizing toxicity in surface water from pesticide<sup>1</sup> discharges,
    - iv. Protecting riparian and wetland habitat, and
    - v. Minimizing sediment discharges to surface water.
  - b. Effectively track and quantify achievement of 5.a.i through 5.a.v over a specific, defined time schedule.
  - c. Comply with the State's Policy for Implementation and Enforcement of the Nonpoint Source Pollution Control Program (NPS Policy), the State Antidegradation Policy, relevant court decisions such as those pertaining to *Coastkeeper et al*/ lawsuits, the precedential language in the Eastern San Joaquin Watershed Agricultural Order, and other relevant statutes and water quality plans and policies, including total maximum daily loads in the central coast region.
6. This Order regulates discharges of waste from irrigated lands by requiring individuals subject to this Order to comply with the terms and conditions set forth herein to ensure that such discharges do not cause or contribute to the exceedance of any regional, state, or federal numeric or narrative water quality objectives or impair any beneficial uses in waters of the state and of the United States.
7. Water Code section 13260(a) requires that any person discharging waste or proposing to discharge waste that could affect the quality of the waters of the state, other than into a community sewer system, must file with the appropriate Regional Board a report of waste discharge (ROWD) containing such information and data as may be required by the Central Coast Water Board, unless the Central Coast Water Board waives such requirement.
8. Water Code section 13263(a) requires the Central Coast Water Board to prescribe waste discharge requirements (WDRs), or waive WDRs, for the discharge. The requirements must implement the Basin Plan and must take into

---

<sup>1</sup> A pesticide is any substance intended to control, destroy, repel, or otherwise mitigate a pest. The term pesticide is inclusive of all pest and disease management products, including insecticides, herbicides, fungicides, nematicides, rodenticides, algicides, etc.

consideration the beneficial uses to be protected and the water quality objectives reasonably required for that purpose, other waste discharges, the need to prevent nuisance, and the provisions of Water Code section 13241.

9. Water Code section 13263(b) states that, in prescribing requirements, the Central Coast Water Board need not authorize the utilization of the full waste assimilation capacities of the receiving waters.
10. Water Code section 13263(e) states that for WDRs, "Upon application by any affected person, or on its own motion, the regional board may review and revise requirements. All requirements shall be reviewed periodically."
11. This Order does not create a vested right to discharge; all discharges are a privilege, not a right, as described in Water Code section 13263(g).
12. Water Code section 13263(i) authorizes the Central Coast Water Board to prescribe general WDRs for a category of discharges if the Central Coast Water Board finds or determines that all the criteria listed below apply to the discharges in that category. Discharges associated with irrigated agricultural operations that will be regulated under this Order are consistent with these criteria and therefore a general order is appropriate.
  - a. The discharges are produced by the same or similar operations.
  - b. The discharges involve the same or similar type of waste.
  - c. The discharges require the same or similar treatment standards.
  - d. The discharges are more appropriately regulated under general WDRs than individual WDRs.
13. Water Code section 13243 authorizes the Central Coast Water Board, in WDRs, to specify certain conditions or areas where the discharge of waste, or certain types of waste, will not be permitted.
14. Water Code section 13267(a) authorizes the Central Coast Water Board to, in establishing or reviewing waste discharge requirements, or in connection with any action to any plan or requirement authorized by the Porter-Cologne Act, investigate the quality of any waters of the state within the region. The monitoring and reporting requirements as set forth in Attachment B are established under Water Code section 13267(b).
15. Water Code section 13267(c) authorizes the Central Coast Water Board or its authorized representatives to, in conducting an investigation of the quality of waters of the state within the region, inspect the facilities of the Discharger upon consent, issuance of a warrant, or in an emergency affecting public health or safety, to ascertain compliance with this Order and to ascertain whether the

purpose of the Porter-Cologne Act are being met. Inspections under Water Code section 13267(c) include sampling and monitoring.

16. Water Code section 13304 authorizes the Central Coast Water Board to, upon making the requisite findings, issue a cleanup and abatement order (CAO) that requires Dischargers to provide emergency and long-term alternative water supplies or replacement water service, including wellhead treatment, to each affected public water supplier or private well owners. A CAO is a separate action from this Order; this Order does not require Dischargers to provide alternative water supplies or replacement water.

### **Public Participation Process**

17. In August 2017, Central Coast Water Board staff held a series of listening sessions throughout the central coast region to solicit stakeholder input on potential improvements to the previous agricultural order. The Central Coast Water Board discussed the input received from stakeholders during the September 2017 board meeting.
18. In February 2018, the Central Coast Water Board published an initial study to begin soliciting input related to environmental review for the California Environmental Quality Act (CEQA), in preparation for developing a draft Environmental Impact Report (EIR). A 73-day public comment period was held for the initial study. In March 2018, Central Coast Water Board staff held a series of public CEQA scoping meetings throughout the region. Input received during the public comment period and public scoping meetings has been considered in the development of the draft EIR.
19. In March and May 2018, Central Coast Water Board meetings included informational items dedicated to a review of water quality conditions associated with agricultural activities and discharges. The March 2018 informational item focused on surface water quality conditions and agricultural discharges and the May 2018 informational item focused on groundwater quality conditions and nitrate impacts to groundwater. Both informational items incorporated presentations from several outside speakers.
20. In September 2018, the Central Coast Water Board's public meeting was dedicated to a workshop for agricultural order stakeholders. Panels of agricultural, environmental, and environmental justice representatives gave presentations to the board in response to a series of questions staff proposed:
  - a. What can growers and the regional board do to demonstrate quantifiable progress to minimize nitrate discharge to groundwater to achieve water quality objectives?

- b. What can growers and the regional board do to demonstrate quantifiable progress to minimize nutrient discharge to surface waters to achieve water quality objectives?
  - c. What can growers and the regional board do to demonstrate quantifiable progress to minimize toxicity in surface waters from pesticide discharges to achieve water quality objectives?
  - d. What can growers and the regional board do to ensure that riparian and wetland habitat is protected due to agricultural activities and discharges?
  - e. What can growers and the regional board do to demonstrate quantifiable progress to minimize sediment discharge to achieve water quality objectives?
  - f. How can the regional board use discharge permit requirements to ensure current and future affordable, safe, and clean water for drinking and environmental uses?
21. In November 2018, the Central Coast Water Board published a set of five conceptual options tables that serve as the Central Coast Water Board's framework to address the questions posed in the September 2018 meeting. The Central Coast Water Board reviewed and discussed the options tables during its public meeting in November, and a 64-day written public comment period was subsequently held to solicit detailed stakeholder input. Central Coast Water Board staff held a series of outreach meetings throughout the region during the comment period.
22. In March 2019, after the 64-day public comment period, the Central Coast Water Board published updated versions of the five conceptual options tables. During the public meetings in March and May 2019, the Central Coast Water Board discussed the updated tables and received additional stakeholder comment.
23. In September 2019, during its public meeting, the Central Coast Water Board held a workshop focused on co-managing food safety and environmental protection, the role of riparian vegetation in water quality and beneficial use protection, and Discharger experiences with food safety challenges.
24. On February 21, 2020, the Central Coast Water Board published the draft Order and draft EIR and began a 45-day public comment period. The comment period was extended twice and closed on June 22, 2020.
25. In June 2020, Central Coast Water Board staff conducted three outreach meetings, which included presentations of the draft Order and draft EIR, and a question and answer session for attendees. These outreach meetings were conducted virtually via the Zoom platform, due to the COVID-19 pandemic.
26. Beginning on September 10, 2020 and continuing to January 8, 2021, the Central Coast Water Board held 10 days of Board meetings to receive oral comments



from the public and to discuss the draft Order. During these meetings, three of which were devoted entirely to receiving public comment and Board engagement with stakeholders, the Board deliberated on the draft Order using a consensus-based approach through which they directed staff on the development of a revised Order.

27. On January 26, 2021, the Central Coast Water Board circulated a revised draft Order for a 30-day public comment period that closed on February 25, 2021. Central Coast Water Board staff subsequently considered the public comments and developed a proposed Order for Board consideration during an April 14-15, 2021, public hearing.
28. The Central Coast Water Board, in a public hearing held on April 14-15, 2021, has heard and considered all comments pertaining to the discharge and proposed Order.
29. After considering all comments pertaining to this General Permit during a public hearing on April 14-16, 2021, this Order was found consistent with the findings in this Part 1 and Attachment A.
30. Any person aggrieved by this action of the Central Coast Water Board may petition the State Water Board to review the action in accordance with California Water Code section 13320 and title 23 California Code of Regulations sections 2050 and following. The State Water Board must receive the petition by 5:00 p.m., within 30 calendar days of the date of adoption of this Order at the following address, except that if the thirtieth day following the date of adoption falls on a Saturday, Sunday, or state holiday, the petition must be received by the State Water Board by 5:00 p.m. on the next business day:

State Water Resources Control Board  
Office of Chief Counsel  
P.O. Box 100, 1001 I Street  
Sacramento, CA 95812-0100

Or by email at [waterqualitypetitions@waterboards.ca.gov](mailto:waterqualitypetitions@waterboards.ca.gov)

For instructions on how to file a petition for review, see [http://www.waterboards.ca.gov/public\\_notices/petitions/water\\_quality/wqp petition\\_instr.shtml](http://www.waterboards.ca.gov/public_notices/petitions/water_quality/wqp petition_instr.shtml).

## **Scope of Order**

### ***Irrigated Lands and Agricultural Discharges Regulated Under this Order***

31. This Order regulates (1) discharges of waste from commercial irrigated lands, including, but not limited to, land planted to row, vineyard, field and tree crops where water is applied for producing commercial crops; (2) discharges of waste from commercial nurseries, nursery stock production, and greenhouse operations with soil floors that do not have point source-type discharges and are not currently operating under individual WDRs; and (3) discharges of waste from lands that are planted to commercial crops that are not yet marketable, such as vineyards and tree crops.
32. Discharges from irrigated lands regulated by this Order include discharges to surface water and groundwater, through mechanisms such as irrigation return flows, percolation, tailwater, tile drain water, stormwater runoff flowing from irrigated lands, stormwater runoff conveyed in channels or canals resulting from the discharge from irrigated lands, and runoff resulting from frost control or operational spills. These discharges can contain wastes that could affect the quality of waters of the state and impair beneficial uses.
33. This Order also regulates agricultural activities such as the removal or degradation of riparian vegetation resulting in the loss or degradation of instream beneficial uses.

### ***Dischargers Regulated Under this Order***

34. This Order regulates both landowners and operators of commercial irrigated lands on or from which there are discharges of waste or activities that could affect the quality of any surface water or groundwater or result in the impairment of beneficial uses (Dischargers). Dischargers are responsible for complying with the conditions of this Order. Both the landowner and the operator of the irrigated agricultural land are Dischargers under this Order. The Central Coast Water Board will hold both the landowner and the operator liable for noncompliance with this Order, regardless of whether the landowner or the operator is the party to enroll under this Order.
35. For the purposes of this Order, irrigated lands producing commercial crops are those operations that have one or more of the following characteristics:
  - a. The landowner or operator has obtained a pesticide use permit from a local County Agricultural Commissioner;

- b. The crop is sold, including but not limited to 1) an industry cooperative, 2) a harvest crew/company, or 3) a direct marketing location, such as certified Farmers Markets;
- c. The federal Department of Treasury Internal Revenue Service for 1040 Schedule F Profit or Loss from Farming is used to file federal taxes.

36. The electronic Notice of Intent (eNOI) serves as a report of waste discharge (ROWD) for the purposes of this Order.

37. The Central Coast Water Board recognizes that certain limited resource growers<sup>2</sup> (as defined by the U.S. Department of Agriculture) may have difficulty achieving compliance with this Order. The Central Coast Water Board will prioritize assistance for these growers, including but not limited to technical assistance, grant opportunities, and necessary flexibility to achieve compliance with this Order (e.g., adjusted monitoring, reporting, or time schedules).

### ***Agricultural Dischargers Not Covered Under this Order and Who Must Apply for Individual Waste Discharge Requirements***

38. This Order does not cover point source-type discharges from commercial nurseries, nursery stock production, greenhouses, or other operations. This Order does not cover discharges of waste from fully contained greenhouse operations (i.e., those that have no groundwater discharge due to impermeable floors but may have other discharges associated with the operation). These operations must either eliminate all such discharges of waste or submit a ROWD to apply for individual WDRs as set forth in Water Code section 13260.

### **Enforcement for Noncompliance**

39. The State Water Board's Water Quality Enforcement Policy (Enforcement Policy) describes progressive enforcement action for violations of WDRs when appropriate. However, the Enforcement Policy recommends formal enforcement as a first response to more significant violations. Progressive enforcement is an escalating series of actions that allows for the efficient and effective use of enforcement resources to 1) assist cooperative Dischargers in achieving compliance; 2) compel compliance for repeat violations and recalcitrant violators; and 3) provide a disincentive for noncompliance. Progressive enforcement

---

<sup>2</sup> The term "Limited Resource Farmer or Rancher" means a participant:

- With direct or indirect gross farm sales not more than the current indexed value in each of the previous two years, and
- Who has a total household income at or below the national poverty level for a family of four, or less than 50 percent of county median household income in each of the previous two years.

A Self-Determination Tool is available to the public and may be completed on-line or printed and completed hardcopy at the USDA website: [Limited Resource Farmer/Rancher Self Determination Tool](#).

actions may begin with informal enforcement actions such as a verbal, written, or electronic communication between the Central Coast Water Board and a Discharger. The purpose of an informal enforcement action is to quickly bring the violation to the Discharger's attention and to give the Discharger an opportunity to return to compliance as soon as possible. The highest level of informal enforcement is a Notice of Violation.

40. The Enforcement Policy recommends formal enforcement actions for the highest priority violations, chronic violations, and/or threatened violations. Violations of this Order that will be considered a priority include, but are not limited to:
- a. Failure to obtain required regulatory coverage;
  - b. Failure to achieve numeric limits;
  - c. Falsifying information or intentionally withholding information required by applicable laws, regulations, or an enforcement order;
  - d. Failure to monitor or provide complete and accurate information as required;
  - e. Failure to pay annual fees, penalties, or liabilities; and
  - f. Failure to submit required reports on time.
41. Water Code section 13350 provides that any person who violates WDRs may be 1) subject to administrative civil liability imposed by the Central Coast Water Board or State Water Board in an amount of up to \$5,000 per day of violation, or up to \$10 per gallon of waste discharged; or 2) subject to civil liability imposed by a court in an amount of up to \$15,000 per day of violation, or up to \$20 per gallon of waste discharged. The actual calculation and determination of administrative civil penalties must be consistent with the Enforcement Policy and the Porter-Cologne Act.

### **Additional Findings and Regulatory Considerations**

42. Attachment A to this Order, incorporated herein, includes additional findings that further describe the Water Board's legal and regulatory authority; compliance with CEQA requirements; applicable plans and policies adopted by the State Water Board and the Central Coast Water Board that contain regulatory conditions that apply to the discharge of waste from irrigated lands; and the rationale for this Order, including descriptions of the environmental and agricultural resources in the central coast region and impacts to water quality and beneficial uses from agricultural discharges.
43. The Central Coast Water Board encourages Dischargers to participate in third-party groups or programs (e.g., certification program, watershed group, water quality coalition, monitoring coalition, or other third-party effort) to facilitate and document compliance with this Order. Third-party programs can be used to implement outreach and education, monitoring and reporting, management practice and/or water quality improvement projects. Regionally scaled third-party

programs addressing multiple Order requirements are preferred to provide economies of scale to reduce Discharger costs, maximize effectiveness, and streamline Water Board oversight; however, watershed- or basin-scale third-party programs of limited scope may be appropriate under certain circumstances and should be coordinated to the extent practicable for consistency and effectiveness. Commodity group certification programs may also be effective in facilitating compliance with this Order. Dischargers participating in an Executive Officer approved third-party program may be subject to permit fee reductions or alternative compliance pathways that substantively comply with this Order.

44. The Central Coast Water Board acknowledges that it will take time to develop meaningful and effective third-party programs that facilitate compliance with this Order. The Order considers this by allowing an initial grace period for the phasing in of various requirements. The phasing in of various requirements is also intended to allow Water Board staff time to develop online reporting tools and templates and to conduct outreach and education to help Dischargers and service providers come up to speed on the new requirements.
45. Third-party programs are discussed in **Part 2, Section A**. The Central Coast Water Board will provide more detailed third-party expectation documents and/or third-party program requests for proposals (RFPs) to inform and solicit third-party program proposals for Executive Officer consideration.
46. The Executive Officer may make non-substantive changes to the Order to correct typographical errors or to maintain consistency within the Order or between the Order and its Attachments, e.g., to conform changes made during the Order development process that were inadvertently not carried through the entire Order. The Board will provide public notice of the non-substantive changes.

**IT IS HEREBY ORDERED** that Order No. R3-2017-0002 is terminated as of the effective date of this Order except for the purposes of enforcement, and that pursuant to Water Code sections 13260, 13263, and 13267, Dischargers enrolled in this Order, their agents, successors, and assigns, must comply with the following terms and conditions to meet the provisions contained in Water Code Division 7 and regulations, plans, and policies adopted thereunder.

**Part 2, Section A. Enrollment, Fees, Termination, General Provisions, and Third-Party Programs**

1. This Order is effective upon adoption by the Central Coast Water Board.
2. Except where stated otherwise, all requirements of this Order apply to all Dischargers.

**Enrollment**

3. Enrollment in this Order requires the submittal of the electronic Notice of Intent (eNOI) pursuant to Water Code section 13260. Submittal of all other technical reports pursuant to this Order is required pursuant to Water Code section 13267. Failure to submit technical reports or the attachments in accordance with the time schedules established by this Order or Monitoring and Reporting Program (MRP), or failure to submit a complete technical report (i.e., of sufficient technical quality to be acceptable to the Executive Officer), may subject the Discharger to enforcement action pursuant to Water Code sections 13261, 13268, or 13350. Dischargers must submit technical reports in the format specified by the Executive Officer.
4. Dischargers who are not currently enrolled in the existing agricultural order must submit to the Central Coast Water Board a complete eNOI prior to discharging. Upon submittal of a complete and accurate eNOI, the Discharger is enrolled under this Order, unless otherwise informed by the Executive Officer.
5. Dischargers who were enrolled in Order R3-2017-0002 as of the effective date of this Order are automatically enrolled in this Order. Within 120 days of Order adoption, enrolled Dischargers must update their eNOI.
6. In the case where an operator may be operating for a period of less than 12 months, the landowner must submit the eNOI. In all other cases, either the landowner or the operator must submit the eNOI. Both the landowner and the operator are Dischargers and considered a responsible party for compliance with the requirements of this Order.
7. **Prior to any discharge or commencement of activities that may cause a discharge**, including land preparation prior to crop production, any Discharger

proposing to control or own a new operation or ranch that has the potential to discharge waste that could directly or indirectly reach waters of the state and/or affect the quality of any surface water and/or groundwater must submit an eNOI.

8. **Within 60 days** of any change in operation or ranch information, the Discharger must update the eNOI.
9. **Within 60 days** of any change in control or ownership of an operation, ranch, or land presently owned or controlled by the Discharger, the Discharger must notify the succeeding owner and operator of the existence of this Order.
10. **Within 60 days** of acquiring control or ownership of an existing operation or ranch, the succeeding Discharger must submit an eNOI.
11. Dischargers must submit all the information required in the eNOI form, including but not limited to the following information for the operation and individual ranch:
  - a. Assessor parcel numbers (APNs) covered by enrollment,
  - b. Landowner(s),
  - c. Operator(s),
  - d. Contact information,
  - e. Third-party program membership,
  - f. Location of operation, including specific ranch(es),
  - g. Map with discharge locations and groundwater wells identified,
  - h. Type and number of groundwater wells located on ranch parcels,
  - i. Total and irrigated acreage,
  - j. Crop types grown,
  - k. Irrigation system type,
  - l. Discharge type,
  - m. Chemical use,
  - n. Slope,
  - o. Impermeable surfaces,
  - p. Presence and location of any waterbodies on or adjacent to the ranch.
  - q. Status of drinking water notification to well users
12. Dischargers or groups of Dischargers seeking regulatory requirements tailored to their specific operation, ranch, geographic area, or commodity may submit an ROWD to obtain an individual order and MRP, or request the development of a general order for a specific type of discharge (e.g., commodity-specific general order). This Order remains applicable to those Dischargers until the Central Coast Water Board adopts such an individual order, MRP, or general order, and, if applicable, the Dischargers are enrolled in the general order.
13. Dischargers seeking enrollment in this Order must submit a statement of understanding of the conditions of this Order and MRP signed by the Discharger

(landowner or operator) with the eNOI. If the operator signs and submits the electronic NOI, the operator must provide a copy of the complete NOI form to the landowner(s).

14. Coverage under this Order is not transferable to any person except after the succeeding Discharger's submittal to the Central Coast Water Board of an updated eNOI and approval by the Executive Officer.

## Fees

15. Dischargers must pay a fee to the State Water Resources Control Board in compliance with the fee schedule contained in Title 23 California Code of Regulations.
16. Dischargers must pay any relevant third-party program fees (e.g., Surface Water Third-Party Monitoring Program (aka Cooperative Monitoring Program or CMP) necessary to comply with monitoring and reporting conditions of this Order or they must comply with monitoring and reporting requirements individually.
17. For Dischargers who choose to participate in a third-party program, failure to pay third-party program fees voids a selection or notification of the option to participate in the third-party program and hence requires Dischargers to immediately comply with individual groundwater protection and/or surface water protection requirements.

## Termination

18. **Immediately**, if a Discharger wishes to terminate coverage under this Order for the operation or an individual ranch, the Discharger must submit a complete Notice of Termination (NOT), in a format specified by the Executive Officer. Termination from coverage is the date the termination request is approved, unless specified otherwise. All discharges must cease before the date of termination, and any discharges on or after the date of termination are violations of this Order, unless covered by other WDRs or waivers of WDRs. All required monitoring and reporting are due **within 60 days of the termination or March 1 following the termination date**, whichever is sooner, unless otherwise directed by the Executive Officer.

## General Provisions

19. The unauthorized discharge of any waste not specifically regulated by this Order, is prohibited.
20. The discharge of waste at a location or in a manner different from that described in the eNOI is prohibited.



21. Dischargers must comply with the Monitoring and Reporting Program (MRP), incorporated herein as Attachment B.
22. All forms, reports, documents, and laboratory data must be submitted to the Central Coast Water Board electronically through the State Water Board's database systems (e.g., GeoTracker, CEDEN,<sup>3</sup> etc.).
23. Dischargers are defined in this Order as both the landowner and the operator of irrigated agricultural land on or from which there are discharges of waste from irrigated agricultural activities that could affect the quality of any surface water or groundwater. The Central Coast Water Board will hold both the landowner and the operator liable for noncompliance with this Order.
24. The Executive Officer may propose, and the Central Coast Water Board may adopt, individual WDRs for any Discharger at any time.
25. The Central Coast Water Board or the Executive Officer may, at any time, terminate applicability of this Order with respect to an individual Discharger upon written notice to the Discharger.
26. Noncompliance with requirements in this Order is grounds for enforcement action and/or termination of coverage for waste discharges under this Order, subjecting the Discharger to enforcement under the Water Code for further discharges of waste to surface water or groundwater.
27. The fact that it would have been necessary to halt or reduce the permitted discharge activity to maintain compliance with this Order is not a defense for the Discharger's violations of this Order.
28. Provisions of this Order are severable. If any provision of this Order is found invalid, the remainder of this Order will not be affected.
29. Upon the Central Coast Water Board's or Executive Officer's request and within a reasonable timeframe, Dischargers must submit any information required to determine compliance with this Order or to determine whether there is cause for modifying or terminating this Order.
30. Under authority of Water Code section 13267(c), the Discharger must allow the Central Coast Water Board, or an authorized representative, upon consent or other documents as may be required by law, to do the following:
  - a. Enter upon the Discharger's premises where a regulated facility or activity is located or conducted or where records must be kept under the conditions of this Order,

---

<sup>3</sup> CEDEN is the California Environmental Data Exchange Network.

- b. Have access to and copy, at reasonable times, any records that must be kept under the conditions of this Order,
- c. Inspect at reasonable times any facilities, equipment (including monitoring and control equipment), practices, or operations regulated or required under this Order, and
- d. Collect samples from and monitor waters of the state within or bordering property subject to this Order, at reasonable times for the purposes of assuring compliance with this Order or as otherwise authorized by the Water Code. The sampling and monitoring may include and is not limited to domestic and irrigation wells, surface receiving waters, and edge of field discharges to surface waters.

31. This Order may be reopened to address changes in statutes, regulations, plans, policies, or case law that govern water quality requirements for the discharges regulated herein.

### **Order Effectiveness Evaluation**

32. To facilitate an adaptive management process to inform modifications to the Order, the Central Coast Water Board will receive annual updates from its staff and, as appropriate, third party groups or programs during public meetings regarding the implementation of this Order. The purpose of the updates is to evaluate and report out on individual discharger and third-party group compliance; identify successes, challenges, and emerging science and management practices; consider potential Order modifications as may be appropriate at five-year intervals; and generally inform the Board and public regarding the Order's effectiveness towards achieving the stated objectives.

### **Third-Party Programs**

33. Dischargers may comply with portions of this Order by participating in third-party groups or programs (e.g., certification program, watershed group, water quality coalition, monitoring coalition, or other third-party effort) approved by the Executive Officer. In this case, the third-party will assist individual Dischargers in achieving compliance with this Order, including implementing water quality improvement projects and required monitoring and reporting as described in the MRP. Compliance with the requirements of this Order is still required for all members of the third-party program; however, the third-party may propose modified monitoring and reporting for approval by the Executive Officer. Third-party program proposals will be evaluated on a case-by-case basis relative to their ability to document compliance with this Order as part of a request for proposal process and as further informed by a forthcoming third-party expectations document.

34. Interested persons may seek discretionary review by the Central Coast Water Board of the Executive Officer's approval or denial of the following work plans:
- Third-party program groundwater quality trend monitoring and reporting.
  - Third-party program surface receiving water quality trend monitoring and reporting.
  - Individual and third-party program follow-up surface receiving water implementation.
35. Interested persons seeking discretionary review by the Central Coast Water Board must submit their request in writing no later than 30 days from the date of the Executive Officer's approval or denial of the work plans noted above.
36. This Order includes specific provisions and an alternative compliance pathway for third-party programs that will also be subject to a third-party request for proposal process and Executive Officer review and approval. Dischargers participating in a third-party administered alternative compliance pathway program, and that remain in good standing as defined in this Order and/or Executive Officer approved third-party work plan, are subject to the third-party program requirements in lieu of individual requirements as specified. The third-party alternative compliance pathway program's assessment and evaluation for groundwater protection and the regional groundwater quality trend monitoring program described in **Part 2, Section C.1** must be closely aligned and coordinated such that they are effectively measuring the objectives the programs are trying to achieve.
37. Third-party program proposals must include and identify specific membership eligibility requirements, for approval by the Executive Officer, to evaluate whether third-party program members are in good standing. Members that are not in good standing with the membership eligibility requirements lose their membership and must immediately comply with individual groundwater protection and/or surface water protection requirements. At a minimum, third-party program proposals must include membership eligibility requirements and follow-up consequences that are triggered, including revocation of membership eligibility, to address the following scenarios where members are no longer in good standing:
- a. Non-payment of fees
  - b. Non-submittal of information
  - c. Non-participation in education/outreach or site visits
  - d. Failure to implement / adapt management practices
38. Consistent with the Water Board's Policy for Implementation and Enforcement of the Nonpoint Source Pollution Control Program (NPS Policy), the ineffectiveness of a third-party program through which a Discharger participates in nonpoint source control efforts cannot be used as a justification for lack of individual

discharger compliance. Dischargers continue to be responsible for complying with this Order individually.

39. Dischargers who elect to join one or more third-party programs to facilitate compliance with this Order must retain their membership with the third parties in good standing. If the Discharger does not meet the requirements of membership in a particular third-party program, then the Discharger is responsible for complying with all requirements in this Order individually. If the Discharger is in good standing of another third-party program for another purpose, that third-party program's requirements still apply. For example, a Discharger may no longer be a member in good standing of the third-party alternative compliance pathway program but could still be a member in good standing for a third-party surface receiving water quality trend monitoring and reporting program. For this example, Dischargers may become eligible to rejoin the third-party alternative compliance pathway program by demonstrating compliance with individual groundwater protection requirements.
40. Dischargers who elect to join an approved third-party program must notify the approved third-party program administrator of their election to participate in the third-party program within 60 days of: 1) approval of the third-party program, and/or 2) the Discharger's enrollment in this Order, whichever is later.
41. The third-party program administrator must notify the Central Coast Water Board of Dischargers electing to participate within 90 days of the third-party program approval, and then provide member participation updates on a quarterly basis thereafter. At a minimum, participating Discharger information provided to the Central Coast Water Board must include operation enrollment information (e.g., AW numbers and operation names) and ranch enrollment information (e.g., GeoTracker AGL numbers and ranch names) in a format specified by the Executive Officer.
42. Third-party programs must meet the following minimum criteria:
  - a. Effectiveness of scale and scope – The program must be of sufficient scale and scope relative to its intended purpose to maximize Discharger participation, implementation effectiveness and Order compliance. Although regionally scaled programs are preferred, watershed- or basin-scale programs will be considered as needed to address localized water quality issues.
  - b. Clearly stated goals and objectives – The program must have meaningful and clearly stated goals, objectives, and associated performance metrics relevant to the Order requirements that are the focus of the program.
  - c. Management and administration – The program must have a well-defined and robust governance and administrative structure with clearly defined roles and responsibilities.

- d. Capacity and expertise – The program must demonstrate sufficient technical, managerial, and financial capacity to successfully achieve its goals and objectives.
- e. Physical presence – The program should have a physical presence in the central coast region, including staff and a headquarters, that can assist its members on a continual and as-needed basis. If the third-party program administrator does not have or plan to have a physical presence in the region, they must demonstrate they can effectively establish, maintain, and engage with core membership without a headquarters in the central coast region.
- f. Transparency and accountability – The program must provide regular assessments of its performance relative to its stated goals and objective based on meaningful performance metrics. This includes reporting of water quality data and farm-level data as needed to document compliance with this Order.
- g. Membership and fee accounting – The program must track and provide ongoing accounting of its Discharger membership and fees to document Discharger compliance.
- h. Data management – The program must upload data as required by this Order to the Water Boards' various data management systems (e.g., CEDEN, GeoTracker, etc.).
- i. Member requirements – The program must have clearly stated and enforced Discharger membership eligibility requirements and report out on them as needed to document compliance.
- j. Coordination – The program must consider and coordinate with other third-party programs/groups or local entities as may be appropriate to create consistency; leverage the efforts, infrastructure and expertise of others; and streamline the program to maximize effectiveness (e.g., coordination with Groundwater Sustainability Agencies [GSAs], flood control management agencies, watershed restoration and management entities, etc.).
- k. Continuing education – The program must include continuing education opportunities as appropriate either directly through the program or through coordination with other third-party programs/groups or local entities to ensure its members obtain technical skills and assistance necessary to achieve compliance with the limits established in this Order. In the instance of third-party monitoring programs, membership outreach and education should be implemented to inform members about the monitoring results relative to meeting specific water quality objectives, numeric targets, numeric interim quantifiable milestones, or numeric limits.
- l. Specific project plan documents – The program must have a detailed work plan including a Quality Assurance Project Plan (QAPP) and Sampling and Analysis Plan (SAP) as may be appropriate based on the program goals and objectives and associated Order requirements.

43. The Central Coast Water Board's review of third-party program proposals will consider the criteria outlined above relative to overall program effectiveness, with an emphasis on approving programs that can effectively assist their members in complying with the requirements of this Order.

## **Part 2, Section B. Planning, Education, Management Practices, and CEQA**

### **Farm Water Quality Management Plan (Farm Plan)**

1. Dischargers must develop, implement, and update as necessary a Farm Water Quality Management Plan (Farm Plan) for each ranch. A current copy of the Farm Plan must be maintained by the Discharger and must be submitted to the Central Coast Water Board upon request. At a minimum, the Farm Plan must include the discrete sections listed below. Additional details regarding each section are included in subsequent sections of this Order. Certain elements included in the Farm Plan must be reported on; however, in general, the Farm Plan is a planning and recordkeeping tool used by Dischargers to manage various aspects of their agricultural operation.
  - a. Irrigation and Nutrient Management Plan (INMP)
  - b. Pesticide Management Plan (PMP)
  - c. Sediment and Erosion Management Plan (SEMP)
  - d. Water Quality Education
  - e. CEQA Mitigation Measure Implementation
2. The INMP, PMP, and SEMP sections of the Farm Plan must include information on management practice implementation and assessment. Elements of the INMP are reported on in the Total Nitrogen Applied report or INMP Summary report. Elements of all the sections listed above are reported on in the Annual Compliance Form (ACF). Additional information on the monitoring and reporting requirements related to each of these sections is included in the MRP.
3. Where required by the Executive Officer based on groundwater quality or surface water quality conditions or exceedances of the numeric targets, numeric interim quantifiable milestones, or numeric limits established in this Order, the Farm Plan must incorporate ranch-level groundwater or surface water discharge monitoring information described in the MRP. The ranch-level groundwater and surface water discharge monitoring must be designed and implemented to inform improved management practices to protect groundwater and surface water quality.
4. Dischargers must maintain all records related to compliance with this Order for a minimum of ten years. Records include, but are not limited to, monitoring information, calculations, management practice implementation and assessment, education records, and all required reporting and information used to submit

complete and accurate reports. Third parties that have been approved by the Executive Officer to assist Dischargers with complying with this Order, for example in the form of water quality monitoring, must also maintain all records for a minimum of ten years. Records must be submitted to the Central Coast Water Board upon request or as required by this Order or an approved work plan.

### **Continuing Education**

5. Dischargers must attend outreach and education events annually to obtain technical skills and assistance necessary to achieve compliance with the numeric targets, numeric interim quantifiable milestones, and numeric limits established by this Order. Outreach and education events should focus on meeting water quality objectives and protecting beneficial uses by identifying water quality problems, implementing pollution prevention strategies, and implementing management practices and assessment designed to protect water quality and beneficial uses and resolve water quality problems to achieve compliance with this Order. Records of participation in continuing education must be maintained in the Farm Plan and submitted to the Central Coast Water Board upon request.
6. Dischargers who exceed the fertilizer nitrogen application targets or limits, nitrogen discharge targets or limits, numeric interim quantifiable milestones, or surface receiving water limits must complete additional relevant water quality education sufficient to fully inform the implementation of additional or improved management practices and assessment to avoid future exceedances.
7. A copy of this Order and MRP must be kept at the ranch for reference by operating personnel. Key operating and site management personnel must be familiar with the content of both documents.

### **Management Practice Implementation and Assessment**

8. Dischargers must implement management practices and assessment, as necessary, to improve and protect water quality, protect beneficial uses, achieve compliance with applicable water quality objectives, achieve the numeric targets, numeric interim quantifiable milestones, and numeric limits established in this Order. Management practices implementation and assessment must be documented in the appropriate section of the Farm Plan (e.g., irrigation and nutrient management practices and assessment must be documented in the INMP section of the Farm Plan). Dischargers must report on management practice implementation and assessment in the ACF, as described in the MRP. Dischargers may demonstrate management practice effectiveness at ranch-level or watershed-scale.

## **CEQA Mitigation Measure Implementation, Monitoring, and Reporting**

9. Impacts and mitigation measures identified in CEQA Mitigation Monitoring and Reporting Program (MMRP) are set forth in the Final Environmental Impact Report (FEIR) at Appendix D, which is incorporated by reference. Mitigation measures identified in the FEIR for this Order are required to be implemented as described in Appendix D unless exempted by another law or regulation. These mitigation measures will substantially reduce environmental effects of the project. The mitigation measures included in this Order have eliminated or substantially lessened all significant effects on the environment, where feasible. Where noted, some of the mitigation measures are within the responsibility and jurisdiction of other public agencies. Such mitigation measures can and should be adopted, as applicable, by those other agencies.
10. Dischargers must report on mitigation measure implementation electronically in the Annual Compliance Form (ACF), as described in the MRP.

### **Part 2, Section C.1. Groundwater Protection**

1. Dischargers may not be subject to all provisions of **Part 2, Section C.1** if they are members in good standing with the third-party alternative compliance pathway program included within **Part 2, Section C.2**.

### **Phasing**

2. Ranches are assigned the Groundwater Phase Area of the groundwater basin where the ranch is located based on the relative level of water quality and beneficial use impairment and risk to water quality. All ranches are assigned a Groundwater Phase Area of 1, 2, or 3. Groundwater Phase 1 areas represent greater water quality impairment and higher risk to water quality relative to Groundwater Phase 2 and 3 areas.
3. The requirements and implementation schedules for groundwater protection are based on the groundwater phase areas, listed in **Table C.1-1** and shown on the maps in **Figure C.1-1**.
4. In the event that a ranch spans multiple Groundwater Phase areas, the ranch will be assigned the earlier phase. For example, a ranch that spans both Groundwater Phase 1 and Groundwater Phase 2 areas will be assigned to Groundwater Phase 1.
5. The Groundwater Phase Area assigned to each ranch will be displayed on the ranch eNOI in GeoTracker.



## Irrigation and Nutrient Management Plan

6. Dischargers must develop and implement an Irrigation and Nutrient Management Plan (INMP) that addresses both groundwater and surface water. This section applies to the groundwater related INMP requirements and the surface water related INMP requirements are contained within **Part 2, Section C.3** of this Order. The INMP is a section of the Farm Plan and must be maintained in the Farm Plan and submitted to the Central Coast Water Board upon request. Summary information from the INMP must be submitted in the INMP Summary report. At a minimum, the elements of the INMP related to groundwater protection must include:
  - a. Monitoring and recordkeeping necessary to submit complete and accurate reports, including the ACF, Total Nitrogen Applied (TNA) report, and INMP Summary report.
  - b. Planning and management practice implementation and assessment that results in compliance with the fertilizer nitrogen application limits in **Table C.1-2** and the nitrogen discharge targets and limits in **Table C.1-3**.
  - c. Descriptions of all irrigation, nutrient, and salinity management practices implemented and assessed on the ranch.
  - d. When INMP certification is required, e.g., as a follow-up action or as a consequence for not meeting the quantifiable milestones and time schedules below, the INMP certification shall include the following:

The person signing this Irrigation and Nitrogen Management Plan (INMP) certifies, under penalty of law, that the INMP was prepared under his/her direction and supervision, that the information and data reported is to the best of his/her knowledge and belief, true, accurate, and complete, and that he/she is aware that there are penalties for knowingly submitting false information. The qualified professional signing the INMP may rely on the information and data provided by the Discharger and is not required to independently verify the information and data.

The qualified professional signing the INMP below further certifies that he/she used sound irrigation and nitrogen management planning practices to develop irrigation and nitrogen application recommendations and that the recommendations are informed by applicable training to minimize nitrogen loss to surface water and groundwater. The qualified professional signing the INMP is not responsible for any damages, loss, or liability arising from subsequent implementation of the INMP by the Discharger in a manner that is inconsistent with the INMP's recommendations for nitrogen application. This certification does not create any liability or claims for environmental violations.

Qualified professional certification:

*"I, \_\_\_\_\_, certify this INMP in accordance with the statement above."*

\_\_\_\_\_ (Signature)

The discharger additionally agrees as follows:

*"I, \_\_\_\_\_, Discharger, have provided information and data to the certifier above that is, to the best of my knowledge and belief, true, accurate, and complete, that I understand that the certifier may rely on the information and data provided by me and is not required to independently verify the information and data, and that I further understand that the certifier is not responsible for any damages, loss, or liability arising from subsequent implementation of the INMP by me in a manner that is inconsistent with the INMP's recommendations for nitrogen application. I further understand that the certification does not create any liability for claims for environmental violations."*

### **Quantifiable Milestones and Time Schedules**

7. As shown in **Table C.1-2**, the fertilizer nitrogen application limits go into effect December 31, 2023.
8. As shown in **Table C.1-3**, the nitrogen discharge targets go into effect December 31, 2023 and nitrogen discharge limits go into effect December 31, 2027.

### **Fertilizer Nitrogen Application Limits**

9. Dischargers must not apply fertilizer nitrogen (**A<sub>FER</sub>**) at rates greater than the limits in **Table C.1-2**. Compliance with fertilizer nitrogen application limits is assessed for each specific crop reported in the TNA report or INMP Summary report.

### **Nitrogen Discharge Targets and Limits**

10. This Order requires Dischargers to submit information on nitrogen applied (**A**) and nitrogen removed (**R**). This Order also establishes nitrogen discharge targets and limits based on the calculation of nitrogen applied minus nitrogen removed (**A-R**) using the formulas below. Nitrogen must not be discharged at rates greater than the targets and limits in **Table C.1-3**. Compliance with nitrogen discharge targets and limits is assessed annually for the entire ranch in the INMP Summary

report through one of the **three compliance pathways** shown below.  
Compliance with all pathways is not required.

**Compliance Pathway 1:**

$$A_{FER} + (C \times A_{COMP}) + (O \times A_{ORG}) + A_{IRR} - R = \text{Nitrogen Discharge}$$

OR

**Compliance Pathway 2:**

$$A_{FER} + (C \times A_{COMP}) + (O \times A_{ORG}) = R$$

OR

**Compliance Pathway 3:**

$$A_{FER} + (C \times A_{COMP}) + (O \times A_{ORG}) - R = \text{Nitrogen Discharge}$$

**In all formulas,  $R = R_{HARV} + R_{SEQ} + R_{SCAVENGE} + R_{TREAT} + R_{OTHER}$**

- a.  **$A_{FER}$**  is the amount of fertilizer nitrogen applied in pounds per acre.
- b.  **$C$**  is the compost discount factor used to represent the amount of compost nitrogen mineralized during the year that the compost was applied.
- c.  **$A_{COMP}$**  is the total amount of compost nitrogen applied in pounds per acre.
- d.  **$O$**  is the organic fertilizer discount factor used to represent the amount of nitrogen mineralized during the first 12 weeks in the year it was applied.
- e.  **$A_{ORG}$**  is the total amount of organic fertilizer or amendment nitrogen applied in pounds per acre.
- f.  **$A_{IRR}$**  is the amount of nitrogen in pounds per acre applied in the irrigation water estimated from the volume required for crop evapotranspiration (ET) or volume of water applied.
- g.  **$R$**  is the amount of nitrogen removed from the field through harvest, sequestration, or other removal methods, in pounds per acre.
- h.  **$R_{HARV}$**  is the amount of nitrogen removed from the field through harvest or other removal of crop material.
- i.  **$R_{SEQ}$**  is the amount of nitrogen removed from the field through sequestration in woody materials of permanent or semi-permanent crops.
- j.  **$R_{SCAVENGE}$**  is the amount of nitrogen credited as removed from the field through nitrogen scavenging cover crops utilized during the wet/rainy season, nitrogen scavenging high carbon amendments during the wet/rainy season, or high carbon woody materials applied as mulch to the crop ground surface.
- k.  **$R_{TREAT}$**  is the amount of nitrogen removed from the ranch through a quantifiable treatment method (e.g., bioreactor).

- I. **ROTHER** is the amount of nitrogen removed from the ranch through other methods not previously quantified.
11. The Central Coast Water Board encourages the use of irrigation water nitrogen as a method of reducing the amount of fertilizer nitrogen applied to crops. The use of irrigation water nitrogen is typically referred to as “pump and fertilize” and is incentivized through compliance pathway 2 and 3 in [Table C.1-3](#). The amount of irrigation water nitrogen is not used in the compliance calculation in these compliance pathways. The amount of irrigation water nitrogen must be reported regardless of the compliance pathway.
12. The Central Coast Water Board encourages the use of compost to improve soil health, nutrient and carbon sequestration, and water holding capacity consistent with the state’s Healthy Soils Initiative. All compost nitrogen (**ACOMP**) applied to the ranch must be reported in the TNA report or INMP Summary report; however, the use of compost is incentivized through the option for Dischargers to use a compost “discount” factor (**C**). Dischargers may use the compost discount factor provided by the Central Coast Water Board in the MRP or may determine their own discount factor. The discounted compost nitrogen must, at a minimum, represent the amount of compost mineralized during the year the compost was applied to the ranch. If the Discharger uses their own compost discount factor, they must maintain records of the method used to determine the compost discount factor in the Farm Plan, and these records must be submitted to the Central Coast Water Board upon request.
13. The Central Coast Water Board encourages the use of organic fertilizers and amendments to improve soil health, nutrient and carbon sequestration, and water holding capacity consistent with the state’s Healthy Soils Initiative. All organic fertilizer and amendment nitrogen (**AORG**) applied to the ranch must be reported in the TNA report or INMP Summary report; however, the use of organic fertilizers and amendments is incentivized through the option for Dischargers to use an organic fertilizer “discount” factor (**O**). Dischargers may use the organic fertilizer discount factor associated with the products C:N ratio, provided by the Central Coast Water Board in the MRP. The discounted organic fertilizer nitrogen must, at a minimum, represent the amount of organic fertilizer mineralized during the first 12 weeks the organic fertilizer was applied to the ranch. The Discharger must maintain records of the organic products used and their associated C:N ratios in the Farm Plan, and these records must be submitted to the Central Coast Water Board upon request. The following products are not eligible to receive an organic fertilizer discount: a) products with no organic compounds (long chain carbon) molecules, such as conventional fertilizer, slow release fertilizers, b) products that do not depend on microbial mineralization to release nitrogen to mineral form to make it available for crop uptake, c) products without

C:N ratio information available, and d) organic liquid fertilizers that are in the liquid and/or emulsified form (excluding organic foliar applications).

14. The amount of **crop material** removed through harvest or other methods ( $R_{HARV}$ ) must be calculated using the formula described below. Dischargers must either use the crop-specific conversion coefficient values found in the MRP or develop their own conversion coefficient values following the approved method in the MRP. If Dischargers develop their own conversion coefficient, they must maintain information on the method used in the Farm Plan, and these records must be submitted to the Central Coast Water Board upon request.

$$R_{HARV} = \text{Conversion Coefficient} \times \text{Material Removed}$$

- a. The **Conversion Coefficient** is a crop-specific coefficient used to convert from units of material removed per acre to units of nitrogen removed per acre.
  - b. **Material Removed** is the amount of nitrogen-containing material removed from the field, in units of pounds per acre.
15. The amount of nitrogen removed through **sequestration** in woody material of permanent or semi-permanent crops ( $R_{SEQ}$ ) must be estimated by the Discharger. Dischargers must maintain records detailing how they estimated the amount of nitrogen sequestered in their permanent crops. These records must be maintained in the Farm Plan and submitted to the Central Coast Water Board upon request.
16. The Central Coast Water Board encourages Dischargers to implement best management practices that reduce nitrogen leaching in the wet/rainy season and improve soil healthy. Dischargers may claim a nitrogen scavenging credit ( $R_{SCAVENGE}$ ) one time per year for each ranch acre by utilizing any of the four options provided by the Central Coast Water Board in the MRP. The total acres receiving the nitrogen scavenging credit may not exceed the ranch acres. Dischargers electing to claim the nitrogen scavenging credit must ensure that their cover crop, high carbon amendment, or high carbon woody materials meets the definitions of a nitrogen scavenging cover crop, nitrogen scavenging high carbon amendment, or high carbon woody materials as noted in the MRP and Definitions. Substantiating records for this credit must be maintained in the Farm Plan and submitted to the Central Coast Water Board upon request.
17. The Central Coast Water Board encourages Dischargers to develop and implement innovative methods for removing nitrogen from the environment to improve water quality. Dischargers may use treatment methods (e.g., bioreactors) on their ranch by participating in collective treatment programs or

systems<sup>4</sup> to remove nitrogen from groundwater or surface water and may count this towards their nitrogen removal (**R**) value if they are able to quantify the amount of nitrogen removed from ranch discharge to groundwater or surface water. This quantified removal through treatment or other innovative methods must be reported as **R<sub>TREAT</sub>**. Dischargers electing to account for this nitrogen removal must monitor the volume and concentration of water entering and exiting the ranch or collective treatment system and calculate the amount of nitrogen removed. These records must be maintained in the Farm Plan and submitted to the Central Coast Water Board upon request.

18. If Dischargers remove additional nitrogen through means other than removing crop material (**R<sub>HARV</sub>**), sequestration (**R<sub>SEQ</sub>**), scavenging credit (**R<sub>SCAVENGE</sub>**), or treatment methods (**R<sub>TREAT</sub>**), they must quantify and report this additional removal as **R<sub>OTHER</sub>**. Dischargers must maintain records detailing how they calculated **R<sub>OTHER</sub>**. These records must be maintained in the Farm Plan and submitted to the Central Coast Water Board upon request.
19. The discharge of nitrogen in excess of the nitrogen discharge **targets** in **Table C.1-3** may result in additional requirements, including obtaining additional education, INMP certification by a qualified professional, implementing additional or improved management practices, and increased monitoring and/or reporting.
20. The discharge of nitrogen in excess of the nitrogen discharge **limits** in **Table C.1-3** may result in additional requirements, including obtaining additional education, INMP certification by a qualified professional, implementing additional or improved management practices, increased monitoring and reporting, and/or progressive enforcement actions.
21. Dischargers who apply more fertilizer nitrogen (**A<sub>FER</sub>**) than the fertilizer nitrogen application limits in **Table C.1-2** to any specific crop **and** who are able to demonstrate compliance with the **final** nitrogen discharge limits, as shown in **Table C.1-3**, are exempt from the fertilizer nitrogen application limit.
22. Dischargers who can quantifiably demonstrate that their ranches pose no threat to surface water quality or groundwater quality may submit a technical report to the Executive Officer for review. If approved, the Discharger is not required to conduct the nitrogen application (**A**) or removal (**R**) monitoring and reporting or to submit the INMP Summary report, regardless of what Groundwater Phase area the ranch is in. The technical report must demonstrate that nitrogen applied at the ranch does not percolate below the root zone in an amount that could

---

<sup>4</sup> Collective treatment programs or systems may be installed or implemented outside the ranch boundaries at a downstream or downflow collective discharge point from multiple ranches to remove nitrogen from groundwater or surface water from each ranch participating in the collective treatment program or system.

degrade groundwater and does not migrate to surface water through discharges, including drainage, runoff, or sediment erosion. Dischargers must provide the Executive Officer with annual updates to confirm that the exemption is still applicable. Failure to provide sufficient annual updates confirming that the exemption is still applicable will result in an immediate reinstatement of the requirement to submit the INMP Summary report for applicable Dischargers. Dischargers electing to use this approach are still eligible to participate in the third-party alternative compliance pathway for groundwater protection.

23. Dischargers who can quantifiably demonstrate that their ranch is achieving the **final** nitrogen discharge limits, as shown in **Table C.1-3**, are not required to submit the nitrogen removal (**R**) reporting in the INMP Summary report, regardless of what Groundwater Phase area the ranch is in. Example situations where this may apply include participation in an approved third-party program that certifies that the Discharger is meeting the final discharge limit and will continue to do so for the duration of the Discharger's participation in the approved third-party program, or by submitting a technical report, subject to Executive Officer review, that quantifies the amount of nitrogen discharge based on the volume and nitrogen concentration of all discharges from the ranch. In these situations, confirmation of membership in the approved third-party program or Executive Officer approval of a submitted technical report constitute compliance with the nitrogen removed (**R**) reporting requirement in the INMP Summary report. This exemption only applies to removal (**R**) in the INMP Summary report; all other requirements, including the TNA report, still apply as described in this Order. Dischargers must provide the Executive Officer with annual updates to confirm that the exemption is still applicable. Failure to provide sufficient annual updates confirming that the exemption is still applicable will result in an immediate reinstatement of the requirement to submit the nitrogen removal (**R**) reporting information in the INMP Summary report for applicable Dischargers. Dischargers electing to use this approach are still eligible to participate in the third-party alternative compliance pathway for groundwater protection.
24. Dischargers, groups of dischargers or commodity groups who can quantify the amount of nitrogen discharged from their ranch or for specific crops or via specific management practices by directly monitoring it at the points of discharge can propose an alternative monitoring methodology to comply with the nitrogen discharge targets and limits, in lieu of using the A-R compliance formulas. Example situations where this may apply includes greenhouse, nursery, container production or intensive crop production where irrigation and drain water is captured and allows for direct monitoring of discharges. For these types of situations, it may be easier to monitor nitrogen discharge than to calculate the amount of nitrogen removed at harvest for each one of the many different crops and plants being grown. Dischargers must submit a request to the Executive

Officer with a technical report of the methodology proposed to quantify nitrogen discharges. The methodology must include enough information to quantify the amount of nitrogen discharged and confirm compliance with the nitrogen discharge targets and limits, as shown in [Table C.1-3](#) or [Table C.2-2](#) (for Dischargers participating in the Third-Party Alternative Compliance Pathway Program for Groundwater Protection described in [Part 2, Section C.2](#)). Acceptable methodologies must include direct measurements of the volume and nitrogen concentration of the water discharged from each ranch per acre and year. Executive Officer approval of the method(s) must be granted before the discharger begins reporting nitrogen discharge based on the proposed methodology. Dischargers who obtain Executive Officer approval to directly monitor their nitrogen discharge from their ranches will not be required to submit nitrogen removal (R) reporting in the INMP Summary report. Dischargers electing to use this approach are still eligible to participate in the third-party alternative compliance pathway program for groundwater protection.

25. The initial 2027 nitrogen discharge limits, as shown in [Table C.1-3](#) will be re-evaluated based on Discharger reported nitrogen applied and removed data, new science, and management practice implementation and assessment before becoming effective.

### Monitoring and Reporting

26. Dischargers must report on management practice implementation and assessment electronically in the **ACF**, as described in the MRP.
27. Dischargers must record and report total nitrogen applied to all crops grown on the ranch, electronically in the TNA report form, as described in the MRP.
28. Dischargers must track and record the following elements of the INMP Summary report that are not included in the TNA report: total nitrogen removed from the ranch and information on irrigation water application and discharge volumes. Dischargers must submit this information electronically in the INMP Summary report form as described in the MRP.
29. The INMP Summary report contains the same nitrogen application information as the TNA report, plus additional information related to nitrogen removed and irrigation management. **Therefore, the INMP Summary report satisfies the TNA report requirement and an additional TNA report is not required to be submitted when the INMP Summary report is submitted to the Central Coast Water Board.**
30. Dischargers must conduct **irrigation well monitoring and reporting prior to the start of groundwater quality trend monitoring and reporting**, either individually or as part of a third-party effort, as described in the MRP.



31. Dischargers must conduct **on-farm domestic well monitoring and reporting**, either individually or as part of a third-party effort, as described in the MRP.
32. Dischargers must conduct **groundwater quality trend monitoring and reporting**, either individually or as part of a third-party effort, as described in the MRP. This requirement applies to all Dischargers enrolled in this Order, regardless of how many wells are currently present on their ranch.
  - a. Dischargers who elect to perform groundwater quality trend monitoring and reporting as part of a **third-party** effort must form or join a third-party. The third-party must submit a work plan for Executive Officer review by the dates and covering the areas specified in the MRP unless it is associated with the Third-Party Alternative Compliance Pathway for Groundwater Protection described in **Part 2, Section C.2**. The work plan must be approved by the Executive Officer prior to implementation. Once approved by the Executive Officer, the work plan must be implemented.
  - b. Dischargers who elect to perform groundwater quality trend monitoring and reporting individually must submit a work plan for Executive Officer review, by the date specified in the MRP, based on their ranch location. The work plan must be approved by the Executive Office prior to implementation. The work plan must describe how the ranch-level groundwater quality trend monitoring program will evaluate groundwater quality trends over time and assess the impacts of agricultural discharges on groundwater quality. Once approved by the Executive Officer, the work plan must be implemented. Dischargers without a well on their property may comply with individual ranch-level groundwater quality trend monitoring and reporting requirements by implementing one of the options specified in the MRP.
33. When required by the Executive Officer based on groundwater quality data or significant and repeated exceedance of the nitrogen discharge targets or limits, Dischargers must complete **ranch-level groundwater discharge monitoring and reporting**, either individually or as part of a third-party effort as described in the MRP. Water Board staff will coordinate with Dischargers prior to the Executive Officer invoking this requirement to determine if non-compliance is the result of unforeseen or uncontrollable circumstances and to provide the Discharger with 90-day advanced notice of the forthcoming requirement. When ranch-level groundwater discharge monitoring and reporting is required, a work plan, including a SAP and QAPP, must be submitted for Executive Officer review prior to implementation. Once approved by the Executive Officer, the work plan must be implemented. Ranch-level groundwater discharge monitoring may be discontinued with the approval of the Executive Officer when the Discharger comes into compliance with the nitrogen discharge targets or limits, or the discharge has otherwise ceased.

## **Part 2, Section C.2. Third-Party Alternative Compliance Pathway for Groundwater Protection**

1. Dischargers that are members in good standing in the third-party alternative compliance pathway program are subject to the provisions of this **Part 2, Section C.2**, unless otherwise stated. For purposes of this section, such Dischargers are referred to as “participating Dischargers.”

Participating dischargers:

- a. Are not subject to fertilizer nitrogen application limits in **Table C.1-2**, which are enforceable by the Central Coast Water Board.
  - b. Are not subject to nitrogen discharge limits in **Table C.1-3**, which are enforceable by the Central Coast Water Board.
  - c. Are subject to targets, which if exceeded result in consequences outlined in this **Part 2, Section C.2**.
  - d. Are not subject to ranch-level groundwater discharge monitoring and reporting.
  - e. Are generally provided more time to achieve fertilizer nitrogen application targets and nitrogen discharge targets, relative to non-participating dischargers.
2. Prior to the initiation of the work plan process outlined below and in the MRP for this third-party alternative compliance pathway program, entities wishing to implement the third-party alternative compliance pathway program described in this **Part 2, Section C.2** must submit a third-party alternative compliance pathway program proposal consistent with the third-party program requirements outlined in **Part 2, Section A** of this Order, as well as the request for proposal process and associated third-party program expectations document forthcoming after Order adoption. For purposes of this section, the entity approved to implement the third-party alternative compliance pathway is referred to as the approved third-party alternative compliance pathway program administrator.
  3. Participating Dischargers must develop and implement an Irrigation and Nutrient Management Plan (INMP) that addresses groundwater. The INMP is a section of the Farm Plan and must be maintained in the Farm Plan and submitted to the Central Coast Water Board upon request. Summary information from the INMP must be submitted in the INMP Summary report. At a minimum, the elements of the INMP related to groundwater and surface water protection for participating Dischargers in a third-party program must include:
    - a. Monitoring and recordkeeping necessary to submit complete and accurate reports, including the Annual Compliance form (ACF), Total Nitrogen Applied (TNA) report, and INMP Summary report.

- b. Planning and management practice implementation and assessment that results in compliance with the fertilizer nitrogen application targets in [Table C.2-1](#), the nitrogen discharge targets in [Table C.2-2](#), and groundwater protection area targets to be determined and approved by the Executive Officer.
- c. Descriptions of all irrigation, nutrient, and salinity management practices implemented and assessed on the ranch.

### Quantifiable Milestones and Time Schedules

4. As shown in [Table C.2-1](#), the fertilizer nitrogen application targets go into effect December 31, 2024 for participating Dischargers in the third-party alternative compliance pathway.
5. As shown in [Table C.2-2](#), the nitrogen discharge targets go in to effect during the third year of this Order (December 31, 2024) for participating Dischargers in the third-party alternative compliance pathway.

### Fertilizer Nitrogen Application Targets

6. Participating Dischargers must not apply fertilizer nitrogen ( $A_{FER}$ ) at rates greater than the **targets** in [Table C.2-1](#). Compliance with fertilizer nitrogen application targets is assessed annually for each specific crop reported in the TNA report or INMP Summary report.
7. Participating Dischargers that apply fertilizer nitrogen ( $A_{FER}$ ) at rates greater than the **targets** in [Table C.2-1](#) one year after the compliance date are subject to follow-up by the approved third-party program administrator, which could include additional education and/or implementation of additional or improved management practices.
8. Participating Dischargers that apply fertilizer nitrogen ( $A_{FER}$ ) at rates greater than the **targets** in [Table C.2-1](#) for a two-year running average after the compliance date, are no longer eligible to participate in the third-party alternative compliance pathway program and must comply with the individual groundwater protection requirements in [Part 2, Section C.1](#). Water Board staff will coordinate with participating Dischargers prior to the Executive Officer invoking this requirement to determine if non-compliance is the result of unforeseen or uncontrollable circumstances and to provide the Discharger with 90-day advanced notice of the forthcoming individual groundwater protection requirements.

### Nitrogen Discharge Targets

9. Participating Dischargers must not discharge nitrogen at rates greater than the **targets** in [Table C.2-2](#). Compliance with nitrogen discharge targets is assessed

annually for the entire ranch using INMP Summary report information. Participating Dischargers must comply with at least one of the nitrogen discharge compliance pathways described in **Part 2, Section C.1** by the compliance date.

10. The final year 2028 nitrogen discharge **targets**, as shown in **Table C.2-2** will be re-evaluated based on discharger reported nitrogen applied and removed data, new science, management practice effectiveness assessment and evaluation, and groundwater protection area collective numeric interim and final targets before becoming effective.
11. Participating Dischargers that discharge nitrogen in excess of the nitrogen discharge **targets** in **Table C.2-2** one year after the compliance date are subject to follow-up by the approved third-party alternative compliance pathway program administrator, which could include additional education and/or implementation of additional or improved management practices.
12. Participating Dischargers that discharge nitrogen in excess of the year 2024 or 2026 nitrogen discharge **targets** in **Table C.2-2** for a two-year running average, must obtain annual INMP certification by a qualified professional until nitrogen discharge targets are achieved for a two-year running average. The INMP certification must include the certification language outlined in **Part 2, Section C.1**.
13. Participating Dischargers that discharge nitrogen in excess of the final nitrogen discharge target in **Table C.2-2** for a three-year running average after the compliance date, are no longer eligible to participate in the third-party alternative compliance pathway program and must comply with individual groundwater protection requirements in **Part 2, Section C.1**. Water Board staff will coordinate with participating Dischargers prior to the Executive Officer invoking this requirement to determine if non-compliance is the result of unforeseen or uncontrollable circumstances and to provide the Discharger with 90-day advanced notice of the forthcoming individual groundwater protection requirements.

### **Groundwater Protection Areas, Formulas, Values, and Targets**

14. The approved third-party alternative compliance pathway program administrator, on behalf of its participating Dischargers, must develop and submit incremental 35%, 70%, and 100% work plans for Executive Officer approval, as described in the MRP. The 35% and 70% work plans will be subject to Executive Officer approval following a 30-day written public period and a public meeting to receive public comments and board input.
15. The incremental draft and final work plans must include the following:

- a. Clearly defined objectives and scientific justification for all proposed groundwater protection (GWP) areas, formulas, values, and collective numeric interim and final targets.
  - b. Scientific justification in support of the proposed GWP areas with respect to, but not limited to, geology, hydrogeology, groundwater basin and subbasin areas, recharge areas, land uses, cropping patterns, and potential membership coverage by acreage and number of members. The proposed GWP areas, formula, values, and collective interim and final targets must be tied together and scaled in a way that will allow for the effective evaluation of water quality and beneficial use protection and compliance with GWP interim and final targets on both a collective and individual basis.
  - c. A program to assess and evaluate the performance and effectiveness of the third-party alternative compliance pathway program's collective numeric interim and final targets in achieving tangible groundwater quality improvements over time at the individual GWP area scale. The assessment and evaluation program must be scaled – spatially and temporally – in coordination with the regional groundwater quality trend monitoring program described in **Part 2, Section C.1** of the third-party program over time.
  - d. Criteria and associated follow-up actions or consequences that the third-party alternative compliance pathway program administrator will implement if individual participating Dischargers do not meet collective numeric interim and final targets, and third-party program membership eligibility requirements including membership probation and revocation to address recalcitrant participating Dischargers.
16. The final work plans must be approved by the Executive Officer prior to implementation. Once approved by the Executive Officer, the work plans must be implemented.
17. Compliance with the collective numeric interim and final targets for a GWP area shall be determined by aggregating data from participating Dischargers within a GWP area to determine if the combined nitrogen discharge is achieving collective compliance with the GWP Area numeric interim and final targets.
18. Although compliance with GWP collective numeric interim and final targets is assessed using the combined nitrogen discharge of participating Dischargers in a GWP area, GWP collective numeric interim and final targets must be designed such that there is a clear and quantifiable means of assessing individual ranch level contribution to the success or failure of complying with the GWP area collective numeric interim and final targets.

19. Participating Dischargers in a GWP area that exceed the GWP collective numeric interim or final targets by 20% or more, as evaluated individually and on an annual basis, are subject to follow-up by the approved third-party alternative compliance pathway program administrator, which could include additional education or implementation of additional or improved management practices.
20. All participating Dischargers in a GWP area that exceeds the collective numeric interim and final GWP targets by 20% or more for a 3-year running average after the compliance date, are no longer eligible to participate in the third-party alternative compliance pathway program and must comply with the individual groundwater protection requirements in **Part 2, Section C.1**.

### **Monitoring and Reporting**

21. Participating Dischargers must submit ACF, TNA, and INMP Summary information according to requirements outlined in **Part 2, Section C.1**, and as described in the MRP.
22. Participating Dischargers must submit ACF, TNA, and INMP Summary information according to the groundwater phase assigned to each ranch. Groundwater phases are outlined in **Part 2, Section C.1**.
23. Participating Dischargers must submit groundwater monitoring and reporting information according to requirements outlined in **Part 2, Section C.1** and as described in the MRP, either individually or as part of a third-party program.

### **Part 2, Section C.3. Surface Water Protection**

#### **Priority Areas (Individual)**

1. Ranches are assigned the Surface Water Priority area of the HUC-8 watershed where the ranch is located based on the relative level of water quality, beneficial use impairment and risk to water quality. All ranches are assigned a Surface Water Priority of 1, 2, 3, or 4. Surface Water Priority Area 1 areas represent greater water quality impairment and higher risk to water quality relative to Surface Water Priority Areas 2, 3, and 4.
2. The follow-up surface receiving water implementation requirements for surface water protection are based on the surface water priority areas, listed in **Table C.3-1** and shown on the map in **Figure C.3-1**.
3. In the event that a ranch spans multiple Surface Water Priority areas, the ranch will either be assigned the earlier priority or will be assigned the priority of the watershed or drainage unit that the ranch drains or discharges to, if specific discharge information is provided to the Central Coast Water Board.

4. The Surface Water Priority assigned to each ranch will be displayed in the ranch eNOI in GeoTracker.

### **Priority Areas (Third-Party Program)**

5. Ranches that are enrolled as part of an approved third-party follow-up surface receiving water implementation program are assigned the third-party program Surface Water Priority of high priority, medium priority, or low priority where the ranch is located, as shown in [Table C.3-1.3P](#) and the map shown in [Figure C-3.1. 3P](#).
6. In the event that a ranch spans multiple third-party program Surface Water Priority areas, the ranch will either be assigned the earlier priority or will be assigned the priority of the watershed or drainage unit that the ranch drains or discharges to, if specific discharge information is provided to the Central Coast Water Board.
7. The third-party program Surface Water Priority assigned to each ranch will be displayed in the ranch eNOI in GeoTracker.

### **Irrigation and Nutrient Management**

8. Dischargers must develop and implement an Irrigation and Nutrient Management Plan (INMP) that addresses both groundwater and surface water. This section applies to the surface water related INMP requirements and the groundwater related INMP requirements are contained within [Part 2, Section C.1](#) of this Order. The INMP is a section of the Farm Plan, must be maintained in the Farm Plan (see [Part 2, Section B](#) and Farm Plan paragraph 14 below), and submitted to the Central Coast Water Board upon request. Summary information from the INMP must be submitted in the ACF, as described in the MRP.

### **Pesticide Management**

9. Dischargers must develop and implement a Pesticide Management Plan (PMP). The PMP is a section of the Farm Plan, must be maintained in the Farm Plan (see [Part 2, Section B](#) and Farm Plan paragraph 14 below), and submitted to the Central Coast Water Board upon request. Summary information from the PMP must be submitted in the ACF, as described in the MRP.

### **Sediment and Erosion Management**

10. Dischargers must develop and implement a Sediment and Erosion Management Plan (SEMP). The SEMP is a section of the Farm Plan, must be maintained in the Farm Plan (see [Part 2, Section B](#) and Farm Plan paragraph 14 below), and submitted to the Central Coast Water Board upon request. Summary information from the SEMP must be submitted in the ACF, as described in the MRP.

### ***Impermeable Surfaces***

11. Ranches with either 50 to 100 percent of fields covered by impermeable surfaces (defined in Attachment C of this Order), or with greater than or equal to 22,500 square feet (0.5 acre) of impermeable surfaces must manage stormwater discharge duration, rate, and volume as described below.
  - a. Stormwater discharge intensity from fields with impermeable surfaces must not exceed the stormwater discharge intensity from equivalent permeable field area for any storm event up to and including the 10-year storm event. The *Santa Barbara Urban Hydrograph Method*<sup>5</sup> and the *Rational Method*<sup>6</sup> are two methods for determining the stormwater discharge intensity match, however other similar methods to determine stormwater discharge intensity may be used.
  - b. Stormwater discharge volume from fields with impermeable surfaces must not exceed the stormwater discharge volume from equivalent permeable field area for any storm event up to and including the 95<sup>th</sup> percentile, 24-hour storm event. The *Curve Number Method*<sup>7</sup> is a method for determining the stormwater discharge volume match, however other similar methods to determined stormwater discharge volume may be used.
  - c. Description and time schedules of management practices, treatment, and/or control measures implemented to meet design storm requirements and mitigate for increased stormwater runoff from impermeable surfaces must be kept in the Farm Plan. Methods for assessing the effectiveness of each management practice, treatment, and/or control measure include calculation of peak and runoff volumes, visual inspection, photo documentation, and local precipitation event data, however other storm event measurement types and recordkeeping that determine the effectiveness of management practices may be used.

### **Farm Plan**

12. At a minimum, the elements of the Farm Plan related to surface water protection must include:
  - a. Monitoring and recordkeeping necessary to submit complete and accurate reports, including the ACF.

---

<sup>5</sup> The Santa Barbara Urban Hydrograph Method is based on the curve number approach and is useful for sheet flow over a plane surface, called overland flow.

<sup>6</sup> The Rational Method is used to determine peak discharge from runoff in a given area.

<sup>7</sup> The Curve Number Method was developed by the Soil Conservation Service to estimate runoff from rainfall on agricultural fields and provides runoff depth that can be used to calculate runoff volume.



- b. Planning and management practice implementation and assessment that results in compliance with the surface water limits in [Table C.3-2](#) (TMDL areas) and [Table C.3-3](#) (non-TMDL areas) for nutrients, [Table C.3-4](#) (TMDL areas) and [Table C.3.5](#) (non-TMDL areas) for pesticides and toxicity, and [Table C.3-6](#) (TMDL areas) for sediment and [Table C.3-7](#) (non-TMDL areas) for turbidity that apply to a ranch based on the ranch location.
- c. Descriptions of all management practices implemented on the ranch, as follows:
  - i. All irrigation, nutrient, and salinity management practices (i.e., INMP).
  - ii. All pesticide management practices (i.e., PMP), including pesticide application characteristics (e.g., timing, formulations, wind, and rainfall monitoring, etc.) and any integrated pest management (IPM) practices implemented (e.g., scouting, beneficial insects, etc.).
  - iii. All sediment, erosion, irrigation, stormwater, road, agricultural drainage pump, and impermeable surface management practices (i.e., SEMP).

### Quantifiable Milestones and Time Schedules

13. Dischargers in an area **with an established TMDL** ([Figure C.3-2](#) for Nutrient TMDL areas, [Figure C.3-3](#) for Pesticide and Toxicity TMDL areas, and [Figure C.3-4](#) for Sediment TMDL areas) for a pollutant must not cause or contribute to an exceedance of the pollutant's surface receiving water limit in [Table C.3-2](#) for nutrients, [Table C.3-4](#) for pesticides and toxicity, and [Table C.3-6](#) for sediment in accordance with the compliance dates specified in the applicable table.
14. Dischargers in an area **without an established TMDL** for a pollutant must not cause or contribute to an exceedance of the pollutant's surface receiving water limit in [Table C.3-3](#) for nutrients, [Table C.3.5](#) for pesticides and toxicity, and [Table C.3-7](#) for turbidity in accordance with the compliance dates specified in the applicable table.
15. The surface receiving water limits in [Table C.3-3](#) for nutrients, [Table C.3.5](#) for pesticides and toxicity, and [Table C.3-7](#) for turbidity, apply to all Dischargers unless a specific surface receiving water limit based on a TMDL in [Table C.3-2](#) for nutrients, [Table C.3-4](#) for pesticides and toxicity, and [Table C.3-6](#) for sediment applies to a Discharger.
16. Dischargers in areas where the water quality for a pollutant is better (i.e., of higher quality) than the applicable limit in [Table C.3-2](#) (TMDL areas) and [Table C.3-3](#) (non-TMDL areas) for nutrients, [Table C.3-4](#) (TMDL areas) and [Table C.3.5](#) (non-TMDL areas) for pesticides and toxicity, and [Table C.3-6](#) (TMDL areas) for sediment and [Table C.3-7](#) (non-TMDL areas) for turbidity must

not cause or contribute to an increase of that pollutant in receiving waters, except as consistent with the antidegradation findings of this Order.

17. The discharge of pollutants from a ranch that cause or contribute to an exceedance of the applicable limits after the compliance date in [Table C.3-2](#) (TMDL areas) and [Table C.3-3](#) (non-TMDL areas) for nutrients, [Table C.3-4](#) (TMDL areas) and [Table C.3.5](#) (non-TMDL areas) for pesticides and toxicity, and [Table C.3-6](#) (TMDL areas) for sediment and [Table C.3-7](#) (non-TMDL areas) for turbidity may result in additional requirements, including obtaining additional education, implementing additional or improved management practices, follow-up monitoring and reporting, ranch-level surface discharge monitoring and reporting, and progressive enforcement actions.

### Monitoring and Reporting

18. Dischargers must complete **surface receiving water monitoring and reporting** as described in the MRP, either individually or through a third-party monitoring program approved by the Executive Officer. Dischargers, either individually or through a third-party monitoring program, must submit a work plan, including a SAP and QAPP as described the MRP, for Executive Officer review prior to implementation. Once approved by the Executive Officer, the work plan must be implemented. The work plan must include applicable monitoring for the pollutants in [Table C.3-2](#) (TMDL areas) and [Table C.3-3](#) (non-TMDL areas) for nutrients, [Table C.3-4](#) (TMDL areas) and [Table C.3.5](#) (non-TMDL areas) for pesticides and toxicity, and [Table C.3-6](#) (TMDL areas) for sediment and [Table C.3-7](#) (non-TMDL areas) for turbidity and must describe the actions that will be taken to achieve the limits in the tables.
19. Dischargers must develop a **follow-up surface receiving water implementation work plan**, either individually or through a third-party program. The work plan due date is based on the Surface Water Priority of the ranch.
- a. Individual Dischargers that are not part of a third-party program approved to develop and implement follow-up surface receiving water implementation work plan(s) must submit an individual work plan by the dates specified below, based on the ranch's Surface Water Priority Area defined in [Table C.3-1](#) of the Order:
    - i. March 1, 2023 for Surface Water Priority 1 areas
    - ii. March 1, 2024 for Surface Water Priority 2 areas
    - iii. March 1, 2025 for Surface Water Priority 3 areas
    - iv. March 1, 2026 for Surface Water Priority 4 areas
  - b. Third-party program(s) approved to develop and implement follow-up surface receiving water implementation work plan(s) on behalf of participating Dischargers must submit work plan(s) by the dates specified below, based

- on the third-party program surface water priority area. Third-party program surface water priority areas are defined in **Table C.3-1.3P** of the Order:
- i. March 1, 2024 for High Priority areas
  - ii. March 1, 2026 for Medium Priority areas
  - iii. March 1, 2028 for Low Priority and All Other areas
- c. The work plan must include numeric interim quantifiable milestones and follow-up actions, such as outreach, education, and management practice implementation and assessment, and, where applicable for pollutant source identification and abatement, additional surface receiving water monitoring locations. Numeric quantifiable milestones include numeric interim quantifiable milestones for relevant constituents (e.g., pollutant load or concentration) and numeric interim quantifiable milestones for management practices implemented that confirm progress towards reducing the discharge of relevant constituents (e.g., volume of discharge water diverted to treatment systems, treatment system pollutant reduction, distance of riparian area improvements, acres no longer receiving conventional pesticide applications). The work plan must include a SAP and QAPP. The work plan must describe the implementation measures that will be taken to reduce the discharge of relevant pollutants and achieve the applicable surface water numeric limits by the compliance dates in **Table C.3-2** (TMDL areas) and **Table C.3-3** (non-TMDL areas) for nutrients, **Table C.3-4** (TMDL areas) and **Table C.3-5** (non-TMDL areas) for pesticides and toxicity, and **Table C.3-6** (TMDL areas) for sediment and **Table C.3-7** (non-TMDL areas) for turbidity. The work plan must be submitted for Executive Officer review prior to implementation. Once approved, the work plan must be implemented.
- d. Prior to the applicable compliance dates in **Table C.3-2** (TMDL areas) and **Table C.3-3** (non-TMDL areas) for nutrients, **Table C.3-4** (TMDL areas) and **Table C.3-5** (non-TMDL areas) for pesticides and toxicity, and **Table C.3-6** (TMDL areas) for sediment and **Table C.3-7** (non-TMDL areas) for turbidity, Dischargers who elect to participate in a third-party program to develop and implement their work plan will not be subject to ranch-level surface discharge monitoring and reporting.
- e. Work plans must take into consideration the level of water quality impairment identified through surface receiving water monitoring. Work plans for areas with persistent exceedances of the surface water limits in **Table C.3-2** (TMDL areas) and **Table C.3-3** (non-TMDL areas) for nutrients, **Table C.3-4** (TMDL areas) and **Table C.3-5** (non-TMDL areas) for pesticides and toxicity, and **Table C.3-6** (TMDL areas) for sediment and **Table C.3-7** (non-TMDL areas) for turbidity must identify follow-up actions to restore degraded areas and meet surface receiving water limits (e.g., numeric interim quantifiable milestones, outreach, education, management practice implementation and

assessment) and additional surface receiving water monitoring locations for pollutant source identification and abatement. Work plans for areas that are already achieving the surface water limits in [Table C.3-2](#) (TMDL areas) and [Table C.3-3](#) (non-TMDL areas) for nutrients, [Table C.3-4](#) (TMDL areas) and [Table C.3.5](#) (non-TMDL areas) for pesticides and toxicity, and [Table C.3-6](#) (TMDL areas) for sediment and [Table C.3-7](#) (non-TMDL areas) for turbidity must identify actions to be taken to protect the high-quality areas (e.g., numeric interim quantifiable milestones, outreach and education). Numeric quantifiable milestones include numeric interim quantifiable milestones for relevant constituents (e.g., pollutant load or concentration) and numeric interim quantifiable milestones for management practices implemented that confirm progress towards reducing the discharge of relevant constituents (e.g., volume of discharge water diverted to treatment systems, treatment system pollutant reduction, distance of riparian area improvements, acres no longer receiving conventional pesticide applications).

- f. Dischargers who elect to develop their work plan individually and whose ranches are located in areas where surface receiving water monitoring shows an exceedance of an applicable surface water limit in [Table C.3-2](#) (TMDL areas) and [Table C.3-3](#) (non-TMDL areas) for nutrients, [Table C.3-4](#) (TMDL areas) and [Table C.3.5](#) (non-TMDL areas) for pesticides and toxicity, and [Table C.3-6](#) (TMDL areas) for sediment and [Table C.3-7](#) (non-TMDL areas) for turbidity after the applicable compliance deadline may be subject to ranch-level surface discharge monitoring and reporting.
20. When required by the Executive Officer, based on surface receiving water quality data or significant and repeated exceedance of the surface water quality limits in [Table C.3-2](#) (TMDL areas) and [Table C.3-3](#) (non-TMDL areas) for nutrients, [Table C.3-4](#) (TMDL areas) and [Table C.3.5](#) (non-TMDL areas) for pesticides and toxicity, and [Table C.3-6](#) (TMDL areas) for sediment and [Table C.3-7](#) (non-TMDL areas) for turbidity, Dischargers must complete **ranch-level surface discharge monitoring and reporting** as described in the MRP. Dischargers can complete this requirement either individually or as part of a third-party program effort. Water Board staff will coordinate with Dischargers prior to the Executive Officer invoking this requirement to determine if non-compliance is the result of unforeseen or uncontrollable circumstances and to provide the Discharger with 90-day advanced notice of the forthcoming requirement. When ranch-level surface discharge monitoring and reporting is required, a work plan, including a SAP and QAPP, must be submitted for Executive Officer review prior to implementation. Once approved by the Executive Officer, the work plan must be implemented. Ranch-level surface discharge monitoring may be discontinued with the approval of the Executive Officer when the Discharger comes into compliance with the surface receiving water limits, or the discharge has otherwise ceased.

21. Dischargers must report on nutrient, pesticide, and sediment and erosion control management practice implementation and assessment electronically in the ACF, as described in the MRP.
22. Dischargers whose ranches have impermeable surfaces must report on stormwater management practice implementation and assessment electronically in the ACF, as described in the MRP.
23. Dischargers with waterbodies within or bordering their ranch must measure and report the current riparian area (average width and length, in feet) in the ACF, as described in the MRP.

## **Part 2, Section D. Additional Requirements and Prohibitions**

### **Waste Discharge Control and Prohibitions**

1. Except in compliance with this Order, Dischargers must not cause or contribute to exceedances of applicable water quality objectives, as defined in Attachment A, must protect all beneficial uses for inland surface waters, enclosed bays, and estuaries, and for groundwater, as outlined in sections 3.3.2 and 3.3.4 of the Basin Plan, and must prevent nuisance as defined in Water Code section 13050.
2. Dischargers must achieve applicable Total Maximum Daily Load (TMDL) Load Allocations (LAs) by achieving the surface water receiving limits established in this Order. Dischargers must incorporate planning elements from applicable TMDLs into the appropriate section of their Farm Plan and, as appropriate, into their follow-up surface receiving water implementation work plan(s).
3. Dischargers that anticipate exceeding a limit or condition of the Order after the final compliance date has passed may request a time schedule order pursuant to Water Code section 13300 for the Central Coast Water Board's consideration. A time schedule order must be requested 18 months in advance of a Discharger or a group of Dischargers anticipating that they will not be able to achieve the receiving water limit by the compliance date. At a minimum, the request for a time schedule order must include information outlined in Attachment A (Additional Findings). Dischargers may either individually request a time schedule order or may jointly request a time schedule order with other Dischargers subject to the same groundwater or surface receiving water limit.
4. The discharge of rubbish, refuse, trash, irrigation tubing or tape, or other solid wastes into surface waters is prohibited. The placement of such materials where they discharge or have the potential to discharge to surface waters is prohibited.
5. The discharge of chemicals such as fertilizers, fumigants, pesticides, herbicides, or rodenticides down a groundwater well casing is prohibited.

6. The discharge of chemicals, including those used to control wildlife (such as bait traps or poison), directly into surface waters or groundwater is prohibited. The placement of chemicals in a location where they may be discharged to surface waters or groundwater is prohibited.
7. Dischargers who apply fertilizers, fumigants, pesticides, herbicides, rodenticides, or other chemicals through an irrigation system must have functional and properly maintained backflow prevention devices installed at the well or pump to prevent pollution of groundwater and surface water that comply with any applicable DPR requirements or local ordinances. Backflow prevention devices used to protect water quality must be those approved by the United States Environmental Protection Agency (USEPA), DPR, State Water Board Division of Drinking Water, or the local public health or water agency.
8. Dischargers must properly destroy all abandoned groundwater wells, exploration holes or test holes, as defined by Department of Water Resources (DWR) Bulletin 74-81 and revised in 1988, in such a manner that they will not produce water or act as a conduit for mixing or otherwise transfer groundwater or waste pollutants between permeable zones or aquifers. Well destruction must be performed in compliance with any applicable DWR requirements or local ordinances (including local well destruction permitting requirements).
9. This Order does not authorize the discharge of pollutants from point sources to waters of the United States, including wetlands. Where required, Dischargers must obtain authorization for such discharges by obtaining a Clean Water Act (CWA) section 402 National Pollutant Discharge Elimination System (NPDES) permit or a CWA section 404 dredge and fill permit.
10. Dischargers who utilize containment structures (such as retention ponds or reservoirs) to achieve treatment or control of the discharge of waste must manage, construct, and maintain such containment structures to avoid discharges of waste to groundwater and surface water that cause or contribute to exceedances of water quality objectives or impairment of beneficial uses. Dischargers may choose the method of compliance appropriate for the individual ranch, which may include, but is not limited to:
  - a. Implementing chemical treatment (such as enzymes);
  - b. Implementing biological treatment (such as wood chips);
  - c. Recycling or reusing contained water to minimize infiltration or discharge of waste;
  - d. Minimizing the volume of water in the containment structure to minimize percolation of waste; and/or
  - e. Minimizing percolation of waste via a synthetic, concrete, clay, or low permeability soil liner.

11. Dischargers must implement proper handling, storage, disposal, and management of fertilizers, fumigants, pesticides, herbicides, rodenticides, and other chemicals to prevent or control the discharge of waste to waters of the state that causes or contributes to exceedances of water quality standards. All chemical storage areas must have appropriate secondary containment structures to protect water quality and prevent discharge through spillage, mixing, or seepage.
12. Dischargers must implement water quality protective management practices (such as source control or treatment) to prevent erosion, reduce stormwater runoff quantity and velocity, and hold fine particles in place.
13. Dischargers must minimize the presence of bare soil vulnerable to erosion and soil runoff to surface waters and implement erosion control, sediment, and stormwater management practices in non-cropped areas, such as unpaved roads and other heavy use areas.
14. Dischargers who utilize agricultural drainage pumps must implement management practices to dissipate flow and prevent channel and/or streambank erosion resulting in increased sediment transport and turbidity within surface water.
15. Dischargers must comply with any applicable stormwater permits.
16. Dischargers must implement best practicable treatment or control (BPTC) measures for the construction and maintenance of farm roads to minimize erosion and sediment discharges that contribute to nonpoint source pollution.
17. Dischargers must ensure that all farm roads are, to the extent possible, hydrologically disconnected from waters of the state by installing disconnecting drainage features, increasing the frequency of (inside) ditch drain relief as needed, constructing out-sloped roads, constructing energy dissipating structures, avoiding concentrating flows in unstable areas, and performing inspection and maintenance as needed to optimize access road performance.
18. Dischargers must ensure that farm road surfacing, especially within a segment leading to waters of the state, minimizes sediment delivery to waters of the state and maximizes road integrity.
19. Dischargers must ensure that farm roads are out-sloped whenever possible to promote even drainage of the farm road surface, prevent the concentration of stormwater flow within an inboard or inside ditch, and to prevent disruption of the natural sheet flow pattern off a hill slope to waters of the state.

20. Farm road stormwater drainage structures must not discharge onto unstable slopes, earthen fills, or directly into waters of the state. Drainage structures must discharge onto stable areas with straw bales, slash, vegetation, and/or rock riprap.
21. If used, chemical toilets or holding tanks must be maintained in a manner appropriate for the frequency and conditions of usage, sited in stable locations, and located outside of areas bordering surface waterbodies.
22. Dischargers who produce and apply compost in-house must comply with the following requirements:
  - a. Materials and activities on-site must not cause, threaten to cause, or contribute to conditions of pollution, contamination, or nuisance;
  - b. Activities must be set back at least 100 feet from the nearest surface waterbody and/or the nearest water supply well;
  - c. Dischargers must implement practices to minimize or eliminate the discharge of waste that may adversely impact the quality or beneficial uses of waters of the state;
  - d. Dischargers must manage the application of water to compost (including from precipitation events) to reduce the generation of wastewater;
  - e. Working surfaces must be designed to prevent, to the greatest extent possible, ponding, infiltration, inundation, and erosion, notwithstanding precipitation events, equipment movement, and other aspects of the facility operations;
  - f. Dischargers must maintain the following records in the Farm Plan. These records must be submitted to the Central Coast Water Board upon request.
    - i. Total operational footprint of compost activities (in acres), including ancillary activities;
    - ii. Compost operation records to provide background information on the composting operation history and a description of methods and operation used, including the following: feedstock types, volumes, sources, and suppliers. Description of the method of composting (e.g., windrow, static, forced air, mechanical). Description of how residuals are removed from the feedstocks and managed and/or disposed of.
    - iii. Description of water supply.
    - iv. Map detailing the location and size (in acres) of the working surface used for the storage of incoming feedstocks, additives, and amendments (receiving area); active and curing composting; final product; drainage patterns; location of any groundwater monitoring wells and water supply wells within and/or near the property boundary; location and distance (in feet) to nearby water supply wells (e.g., municipal supply, domestic supply, agricultural wells) from the nearest property boundary of the operation; identification of all surface waterbodies, including streams, ditches, canals, and other drainage



- courses; and distances from the nearest property boundary of the operation to these surface waterbody areas.
- v. Records of appropriate monitoring (dependent on method of composting) for composting to develop final product (temperature, turning, air flow, etc.).
  - vi. Records of final product use, including locations and volumes.
23. Disturbance (e.g., removal, degradation, or destruction) of existing, naturally occurring, and established native riparian vegetative cover (e.g., trees, shrubs, and grasses), unless authorized or exempted (e.g., Clean Water Act [CWA] section 404 permit and CWA section 401 certification, WDRs, waivers of WDRs, a California Department of Fish and Wildlife [CDFW] Lake and Streambed Alteration Agreement, or municipal ordinance), is prohibited. Dischargers must avoid disturbance in riparian areas to minimize waste discharges and protect water quality and beneficial uses.
24. In the case where disturbance of riparian areas is authorized, Dischargers must implement appropriate and practicable measures to avoid, minimize, and mitigate erosion and discharges of waste.

### **Additional Requirements**

25. Upon the Central Coast Water Board's request, Dischargers must submit information regarding compliance with any DPR adopted or approved surface water or groundwater protection requirements to the Central Coast Water Board.
26. Upon the Central Coast Water Board's request, Dischargers must submit proof of an approved Lake and Streambed Alteration Agreement or other authorization or release from the CDFW to the Central Coast Water Board for any work conducted within the bed, bank, and channel, including riparian areas, of parcels enrolled in this order, that has the potential to result in erosion and discharges of waste to waters of the State.
27. Upon the Central Coast Water Board's request, Dischargers must submit proof of a Clean Water Act section 404 dredge and fill permit from the United States Army Corps of Engineers (USACE) for any work that has the potential to discharge wastes considered "fill" material, such as sediment, to waters of the United States to the Central Coast Water Board.
28. Dischargers must comply with DWR Bulletin 74-81 and supplement 74-90, Water Code sections 13700 through 13755, and any local permitting requirements associated with installation of new wells.
29. This Order does not authorize any act that results in the taking of a threatened or endangered species or any act that is now prohibited, or becomes prohibited in

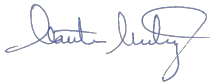
the future, under either the California Endangered Species Act (Fish and Game Code sections 2050 to 2097) or the federal Endangered Species Act (16 U.S.C. sections 1531 to 1544). If a "take" will result from any act authorized under this Order, the Dischargers must obtain authorization for an incidental take prior to taking action. Dischargers are responsible for meeting all applicable requirements of the California and federal Endangered Species Acts for the discharge authorized by this Order.

30. Dischargers or a representative authorized by the Discharger must sign technical reports submitted to the Central Coast Water Board to comply with this Order. Any person signing or submitting a document must provide the following certification, whether written or implied:

*"In compliance with Water Code section 13267, I certify under penalty of perjury that this document and all attachments were prepared by me, or under my direction or supervision, following a system designed to ensure that qualified personnel properly gather and evaluate the information submitted. To the best of my knowledge and belief, this document and all attachments are true, accurate, and complete. I am aware that there are significant penalties for submitting false information, including the possibility of fine and imprisonment."*

#### **CERTIFICATION**

I, Matthew T. Keeling, Executive Officer, do hereby certify that this General Order with all its attachments is a full, true, and correct copy of an order adopted by the California Regional Water Quality Control Board, Central Coast Region on April 15, 2021.



---

Matthew T. Keeling, Executive Officer

**Tables and Figures**

**Tables and Figures related to Part 2, Section C.1. Groundwater Protection**

**Table C.1-1. Groundwater Phase Areas**

<b>Groundwater Basin<sup>1</sup></b>	<b>Groundwater Phase</b>
Gilroy-Hollister Valley - Llagas Area	Phase 1, Phase 2
Salinas Valley - Forebay Aquifer	Phase 1, Phase 2
Salinas Valley - Upper Valley Aquifer	Phase 1, Phase 2
Santa Maria River Valley - Santa Maria	Phase 1, Phase 2
Santa Ynez River Valley	Phase 1, Phase 3
Corralitos - Pajaro Valley	Phase 2
Gilroy Hollister Valley - North San Benito	Phase 2
Salinas Valley - 180/400 Foot Aquifer	Phase 2
Salinas Valley - East Side Aquifer	Phase 2
San Luis Obispo Valley	Phase 2
All Other Basins and Areas Outside of Basins	Phase 3

<sup>1</sup>As defined in the 2019 California Department of Water Resources Bulletin 118.

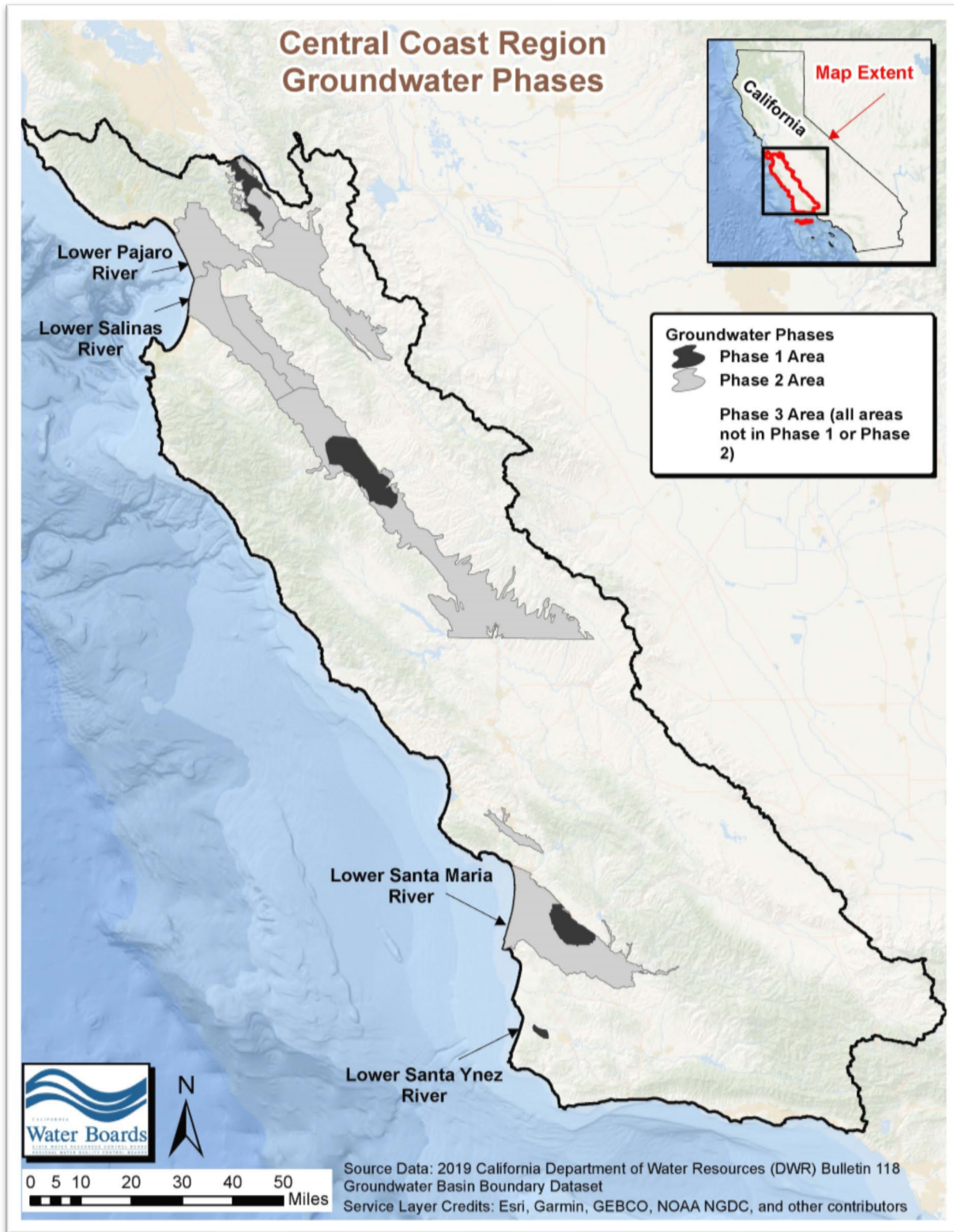


Figure C.1-1: Groundwater Phase Areas

**Table C.1-2. Compliance Dates for Fertilizer Nitrogen Application Limits**

<b>Crop</b>	<b>90<sup>th</sup> Percentile A<sub>FER</sub> =</b>	<b>Compliance Date</b>	<b>85<sup>th</sup> Percentile A<sub>FER</sub> =</b>	<b>Compliance Date</b>
Broccoli	295	12/31/2023	280	12/31/2025
Cauliflower	310		285	
Celery	360		330	
Lettuce	275		255	
Spinach	245		230	
Strawberry	320		295	
All Other Crops	500		480	

Note: For crops grown for less than one year (e.g., broccoli, lettuce, etc.), units are in pounds of nitrogen per acre per crop. In the situation where a Discharger grows a crop more than once during the year, e.g. grows a spring lettuce and a fall lettuce, the application limit applies to each of the crops separately: no more than 275 pounds of nitrogen per acre can be applied to the spring lettuce crop and no more than 275 pounds of nitrogen per acre can be applied to the fall lettuce crop. The two lettuce crops can be reported on separately or can be averaged together. For crops grown for more than one year (e.g., grapes, trees, etc.), units are in pounds of nitrogen per acre per year. The 90<sup>th</sup> and 85<sup>th</sup> percentile fertilizer nitrogen application limits were determined by using year 2014 to 2019 total nitrogen applied (TNA) reporting information.

**Table C.1-3. Compliance Dates for Nitrogen Discharge Targets and Limits**

<b>Compliance Pathway 1</b> $A_{FER} + (C \times A_{COMP}) + (O \times A_{ORG}) + A_{IRR} - R =$	<b>Compliance Date</b>		
	Target	500	12/31/2023
	Target	400	12/31/2025
	Limit	300	12/31/2027
	Limit	200	12/31/2031
	Limit	150	12/31/2036
	Limit	100	12/31/2041
	Limit	50	12/31/2051
OR			
<b>Compliance Pathway 2</b> $A_{FER} + (C \times A_{COMP}) + (O \times A_{ORG}) = R$	<b>Compliance Date</b>		
	Target	A = R	12/31/2023
	Target	A = R	12/31/2025
	Limit	A = R	12/31/2027
	Limit	A = R	12/31/2031
	Limit	A = R	12/31/2036
	Limit	A = R	12/31/2041
	Limit	A = R	12/31/2051
OR			
<b>Compliance Pathway 3</b> $A_{FER} + (C \times A_{COMP}) + (O \times A_{ORG}) - R =$	<b>Compliance Date</b>		
	Target	300	12/31/2023
	Target	200	12/31/2025
	Limit	100	12/31/2027
	Limit	0	12/31/2031
	Limit	-50	12/31/2036
	Limit	-100	12/31/2041
	Limit	-150	12/31/2051

Note: All units are in pounds of nitrogen per acre per year and represent all crops grown and harvested on the entire ranch. The initial 2027 nitrogen discharge limits will be re-evaluated based on discharger reported nitrogen applied and removed data, new science, and management practice implementation and assessment before becoming effective.

**A<sub>FER</sub>** is the amount of fertilizer nitrogen applied in pounds per acre.

**C** is the compost discount factor used to represent the amount of compost nitrogen mineralized during the year that the compost was applied.

**A<sub>COMP</sub>** is the total amount of compost nitrogen applied in pounds per acre.

**A<sub>IRR</sub>** is the amount of nitrogen in pounds per acre applied in the irrigation water estimated from the volume required for crop evapotranspiration (ET) or volume of water applied.

**O** is the organic fertilizer discount factor used to represent the amount of nitrogen mineralized during the first 12 weeks in the year it was applied.

**A<sub>ORG</sub>** is the total amount of organic fertilizer or amendment nitrogen applied in pounds per acre.

**R** is the amount of nitrogen removed from the field through harvest, sequestration, or other removal methods, in pounds per acre.

**Note:** Report due dates to confirm compliance with the fertilizer application limits and nitrogen discharge targets and limits are included in the MRP.



**Tables and Figures related to Part 2, Section C.2. Third-Party Alternative Compliance Pathway for Groundwater Protection**

**Table C.2-1. Compliance Dates for Fertilizer Nitrogen Application Targets (Alternative Compliance Pathway)**

Crop	90 <sup>th</sup> Percentile A <sub>FER</sub> =	Compliance Date	85 <sup>th</sup> Percentile A <sub>FER</sub> =	Compliance Date
Broccoli	295	12/31/2024	280	12/31/2026
Cauliflower	310		285	
Celery	360		330	
Lettuce	275		255	
Spinach	245		230	
Strawberry	320		295	
All Other Crops	500		480	

Note: For crops grown for less than one year (e.g., broccoli, lettuce, etc.), units are in pounds of nitrogen per acre per crop. In the situation where a Discharger grows a crop more than once during the year, e.g. grows a spring lettuce and a fall lettuce, the application limit applies to each of the crops separately: no more than 275 pounds of nitrogen per acre can be applied to the spring lettuce crop and no more than 275 pounds of nitrogen per acre can be applied to the fall lettuce crop. The two lettuce crops can be reported on separately or can be averaged together. For crops grown for more than one year (e.g., grapes, trees, etc.), units are in pounds of nitrogen per acre per year. The 90<sup>th</sup> and 85<sup>th</sup> percentile fertilizer nitrogen application targets were determined by using year 2014 to 2019 total nitrogen applied (TNA) reporting information.

**Table C.2-2. Compliance Dates for Nitrogen Discharge Targets (Alternative Compliance Pathway)**

Compliance Pathway 1 $A_{FER} + (C \times A_{COMP}) + (O \times A_{ORG}) + A_{IRR} - R =$	Target	Compliance Date
	500	12/31/2024
	400	12/31/2026
300	12/31/2028	
OR		
Compliance Pathway 2 $A_{FER} + (C \times A_{COMP}) + (O \times A_{ORG}) = R$	Target	Compliance Date
	A = R	12/31/2024
	A = R	12/31/2026
A = R	12/31/2028	
OR		
Compliance Pathway 3 $A_{FER} + (C \times A_{COMP}) + (O \times A_{ORG}) - R =$	Target	Compliance Date
	300	12/31/2024
	200	12/31/2026
100	12/31/2028	

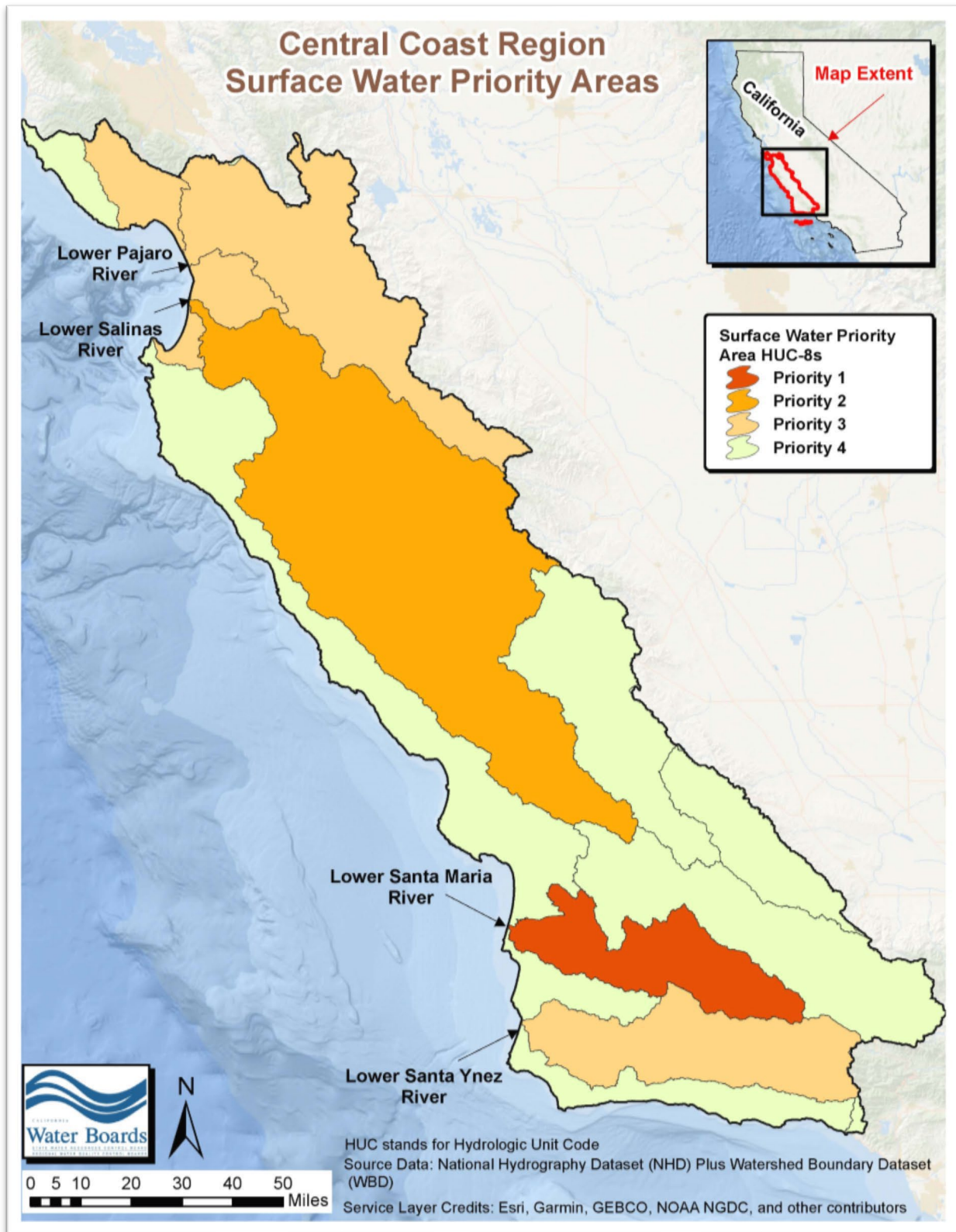
Notes: All units are in pounds of nitrogen per acre per year and represent all crops grown and harvested on the entire ranch. All compliance pathway variables are defined above under [Table C.1-3](#). The final 2028 nitrogen discharge targets will be re-evaluated based on discharger reported nitrogen applied and removed data, new science, management practice implementation and assessment, and third-party GWP collective numeric interim and final targets before becoming effective.

**Tables and Figures related to Part 2, Section C.3. Surface Water Protection**

**Table C.3-1. Surface Water Priority Areas**

<b>HUC-8 Number<sup>1</sup></b>	<b>HUC-8 Name</b>	<b>Surface Water Priority</b>
18060008	Santa Maria	Priority 1
18060005	Salinas	Priority 2
18060002	Pajaro	Priority 3
18060015	Monterey Bay	Priority 3
18060010	Santa Ynez	Priority 3
18050003	Coyote	Priority 4
18050006	San Francisco Coastal South	Priority 4
18060004	Estrella	Priority 4
18060006	Central Coastal	Priority 4
18060003	Carrizo Plain	Priority 4
18060007	Cuyama	Priority 4
18060009	San Antonio	Priority 4
18060013	Santa Barbara Coastal	Priority 4
18060014	Santa Barbara Channel Islands	Priority 4
18070101	Ventura	Priority 4

<sup>1</sup>As defined by the National Hydrography Dataset Plus Watershed Boundary Dataset

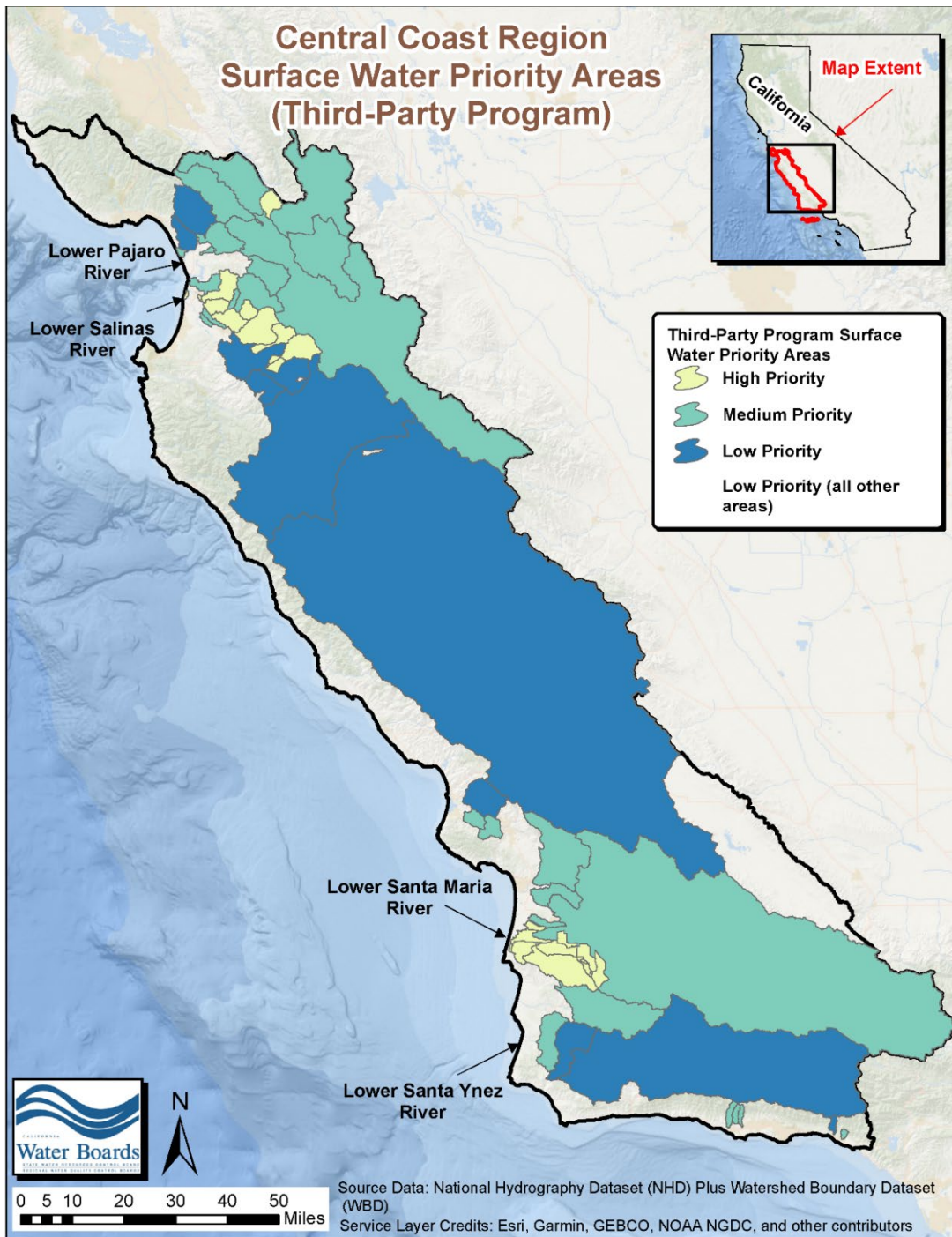


**Figure C-3.1: Surface Water Priority Areas**

**Table C.3-1.3P. Surface Water Priority Areas (Third-Party Program)**

<b>High Priority</b>	
305FUF	Furlong Creek at Frazier Lake Road
309ALG	Salinas Reclamation Canal at La Guardia
309CCD	Chualar Creek west of Highway 101
309CRR	Chualar Creek North Branch east of Highway 101
309ESP	Espinosa Slough upstream from Alisal Slough
309JON	Salinas Reclamation Canal at San Jon Road
309MER	Merrit Ditch upstream of Highway 183
309NAD	Natividad Creek upstream of Salinas Reclamation Canal
309OLD	Old Salinas River at Monterey Dunes Way
309QUI	Quail Creek at culvert on east side of Highway 101
309TEH	Tembladero Slough at Haro Street
312BCC	Bradley Canyon Creek at Culvert
312BCJ	Bradley Channel at Jones Street
312GVS	Green Valley at Simas
312MSD	Main Street Canal upstream of Ray Road at Highway 166
312OFC	Oso Flaco Creek at Oso Flaco Lake Road
312ORC	Orcutt Solomon Creek upstream of Santa Maria River
312ORI	Orcutt Solomon Creek at Highway 1
312SMA	Santa Maria River at Estuary
<b>Medium Priority</b>	
305BRS	Beach Road Ditch at Shell Road
305CAN	Carnadero Creek upstream of Pajaro River
305CHI	Pajaro River at Chittenden Gap
305FRA	Pajaro River Millers Canal at Frazier Lake Road
305LCS	Llagas Creek at Southside Avenue
305PJP	Pajaro River at Main Street
305SJA	San Juan Creek at Anzar Road
305TSR	Tequisquita Slough upstream of Pajaro River at Shore Road
305WCS	Watsonville Creek at Elkhorn Road / Hudson Landing
309ASB	Alisal Slough at White Barn
309BLA	Blanco Drain below Pump
309GAB	Gabilan Creek at Boronda Road
309MOR	Moro Cojo Slough at Highway 1
309RTA	Santa Rita Creek at Santa Rita Creek Park
310LBC	Los Berros Creek at Century Road
310PRE	Prefumo Creek at Calle Joaquin
310USG	Arroyo Grande Creek at old USGS Gauge
310WRP	Warden Creek at Wetlands Restoration Preserve
312OFN	Little Oso Flaco Creek
312SMI	Santa Maria at Highway 1
313SAE	San Antonio Creek at San Antonio Road east
314SYN	Santa Ynez River at 13 <sup>th</sup>
315BEF	Bell Creek at Winchester Canyon Park
315FMV	Franklin Creek at Mountain View Lane
315GAN	Glenn Annie Creek
315LCC	Los Carneros Creek at Calle Real

<b>Low Priority</b>	
305COR	Salsipuedes Creek downstream of Corralitos Creek upstream of HWY 129
305WSA	Watsonville Slough at San Andreas Road
309GRN	Salinas River (Mid) at Elm Road in Greenfield
309SAC	Salinas River at Chualar
309SAG	Salinas River at Gonzales River Road Bridge
309SSP	Salinas River (Lower) at Spreckles Gauge
310CCC	Chorro Creek upstream of Chorro Flats
314SYF	Santa Ynez River at Flordale
314SYL	Santa Ynez River at River Park
315APF	Arroyo Paredon Creek at Foothill Bridge
All Other Areas	Low priority also includes all other areas not in high or medium priority areas



**Figure C-3.1.3P: Surface Water Priority Areas (Third-Party Program)**

**Table C.3-2. Compliance Dates for Nutrient Limits (TMDL areas)**

<b>TMDL Project Name</b>	<b>Constituent</b>	<b>Matrix</b>	<b>Limit<sup>1</sup></b>	<b>Units<sup>2</sup></b>	<b>Compliance Date</b>
Arroyo Paredon Nitrate TMDL	Nitrate, as N	Water Column	10.0	mg/L	12/31/2032
Bell Creek Nitrate TMDL	Nitrate, as N	Water Column	10.0	mg/L	12/31/2032
Franklin Creek Nutrients TMDL	Nitrate, as N	Water Column	10.0	mg/L	12/31/2032
Franklin Creek Nutrients TMDL	Total Nitrogen, as N	Water Column	Wet Season: 8.0	mg/L	3/4/2034
Franklin Creek Nutrients TMDL	Total Phosphorous	Water Column	Wet Season: 0.3	mg/L	3/4/2034
Franklin Creek Nutrients TMDL	Total Nitrogen, as N	Water Column	Dry Season: 1.1	mg/L	3/4/2044
Franklin Creek Nutrients TMDL	Total Phosphorous	Water Column	Dry Season: 0.075	mg/L	3/4/2044
Glen Annie Canyon, Tecolotito Creek, & Carneros Creek Nitrate TMDL	Nitrate, as N	Water Column	10.0	mg/L	12/31/2032
Los Berros Creek Nitrate TMDL	Nitrate, as N	Water Column	10.0	mg/L	12/31/2032
Los Osos Creek, Warden Creek, and Warden Lake Wetland Nutrient TMDL	Nitrate, as N	Water Column	10.0	mg/L	12/31/2032

<b>TMDL Project Name</b>	<b>Constituent</b>	<b>Matrix</b>	<b>Limit<sup>1</sup></b>	<b>Units<sup>2</sup></b>	<b>Compliance Date</b>
Lower Salinas River Watershed Nutrient TMDL	Ammonia (Un-ionized), as N3	Water Column	0.025	mg/L	12/31/2032
Lower Salinas River Watershed Nutrient TMDL	Nitrate, as N	Water Column	10.0	mg/L	12/31/2032
Lower Salinas River Watershed Nutrient TMDL	Total Nitrogen, as N4	Water Column	Wet Season: 8.0	mg/L	5/7/2034
Lower Salinas River Watershed Nutrient TMDL	Nitrate, as N	Water Column	Wet Season: 8.0	mg/L	5/7/2034
Lower Salinas River Watershed Nutrient TMDL	Orthophosphate, as P	Water Column	Wet Season: 0.3	mg/L	5/7/2034
Lower Salinas River Watershed Nutrient TMDL	Total Nitrogen, as N4	Water Column	Dry Season: 1.7	mg/L	5/7/2044
Lower Salinas River Watershed Nutrient TMDL	Nitrate, as N	Water Column	Dry Season: 1.4 – 6.41	mg/L	5/7/2044
Lower Salinas River Watershed Nutrient TMDL	Orthophosphate, as P	Water Column	Dry Season: 0.07 – 0.131	mg/L	5/7/2044
Pajaro River Watershed Nutrient TMDL	Ammonia (Un-ionized), as N3	Water Column	0.025	mg/L	12/31/2032
Pajaro River Watershed Nutrient TMDL	Nitrate, as N	Water Column	10.0	mg/L	12/31/2032



<b>TMDL Project Name</b>	<b>Constituent</b>	<b>Matrix</b>	<b>Limit<sup>1</sup></b>	<b>Units<sup>2</sup></b>	<b>Compliance Date</b>
Pajaro River Watershed Nutrient TMDL	Total Nitrogen, as N	Water Column	Wet Season: 8.0	mg/L	12/31/2032
Pajaro River Watershed Nutrient TMDL	Nitrate, as N	Water Column	Wet Season: 8.0	mg/L	12/31/2032
Pajaro River Watershed Nutrient TMDL	Orthophosphate, as P	Water Column	Wet Season: 0.3	mg/L	12/31/2032
Pajaro River Watershed Nutrient TMDL	Total Nitrogen, as N5	Water Column	Dry Season: 1.1 – 2.11	mg/L	7/12/2041
Pajaro River Watershed Nutrient TMDL	Nitrate, as N	Water Column	Dry Season: 1.8 – 3.91	mg/L	7/12/2041
Pajaro River Watershed Nutrient TMDL	Orthophosphate, as P	Water Column	Dry Season: 0.04 – 0.141	mg/L	7/12/2041
San Luis Obispo Creek Nitrate TMDL	Nitrate, as N	Water Column	10.0	mg/L	12/31/2032
Santa Maria River Watershed Nutrients TMDL	Ammonia (Un-ionized), as N3	Water Column	0.025	mg/L	12/31/2032
Santa Maria River Watershed Nutrients TMDL	Nitrate, as N	Water Column	10.0	mg/L	12/31/2032

<b>TMDL Project Name</b>	<b>Constituent</b>	<b>Matrix</b>	<b>Limit<sup>1</sup></b>	<b>Units<sup>2</sup></b>	<b>Compliance Date</b>
Santa Maria River Watershed Nutrients TMDL	Nitrate, as N	Water Column	Wet Season or Year-Round: 5.7 – 8.01	mg/L	5/22/2034
Santa Maria River Watershed Nutrients TMDL	Orthophosphate, as P	Water Column	Wet Season or Year-Round: 0.08 – 0.31	mg/L	5/22/2034
Santa Maria River Watershed Nutrients TMDL	Nitrate, as N	Water Column	Dry Season: 4.3	mg/L	5/22/2044
Santa Maria River Watershed Nutrients TMDL	Orthophosphate, as P	Water Column	Dry Season: 0.19	mg/L	5/22/2044

<sup>1</sup>The Lower Salinas River Watershed Nutrient TMDL, Pajaro River Watershed Nutrient TMDL, and Santa Maria River Watershed Nutrient TMDL include load allocations for specific waterbody reaches within the TMDL project area. The limits for those TMDLs are summarized in this table as ranges; however, the exact load allocation values for each reach apply as described in the TMDL and Basin Plan and will be assessed as numeric limits for the purposes of this Order.

<sup>2</sup>mg/L is milligrams per liter.

<sup>3</sup>Calculated using total ammonia and onsite instream measurements (field measurements) of pH and water temperature.

<sup>4</sup>Total nitrogen TMDL load allocation applies to Moro Cojo Slough only.

<sup>5</sup>Total nitrogen TMDL load allocation applies to the following sloughs: Watsonville, Harkins, Gallighan, and Struve.

**Table C.3-3. Compliance Dates for Nutrient Limits (Non-TMDL areas)**

<b>Constituent Group</b>	<b>Constituent</b>	<b>Matrix</b>	<b>Limit</b>	<b>Units<sup>1</sup></b>	<b>Compliance Date</b>
Nutrients	Nitrate, as Nitrogen	Water Column	10.0	mg/L	12/31/2032
Nutrients	Ammonia (un-ionized), as Nitrogen <sup>2</sup>	Water Column	0.025	mg/L	12/31/2032

<sup>1</sup>mg/L is milligrams per liter.

<sup>2</sup>Calculated using total ammonia and onsite instream measurements (field measurements) of pH and water temperature.

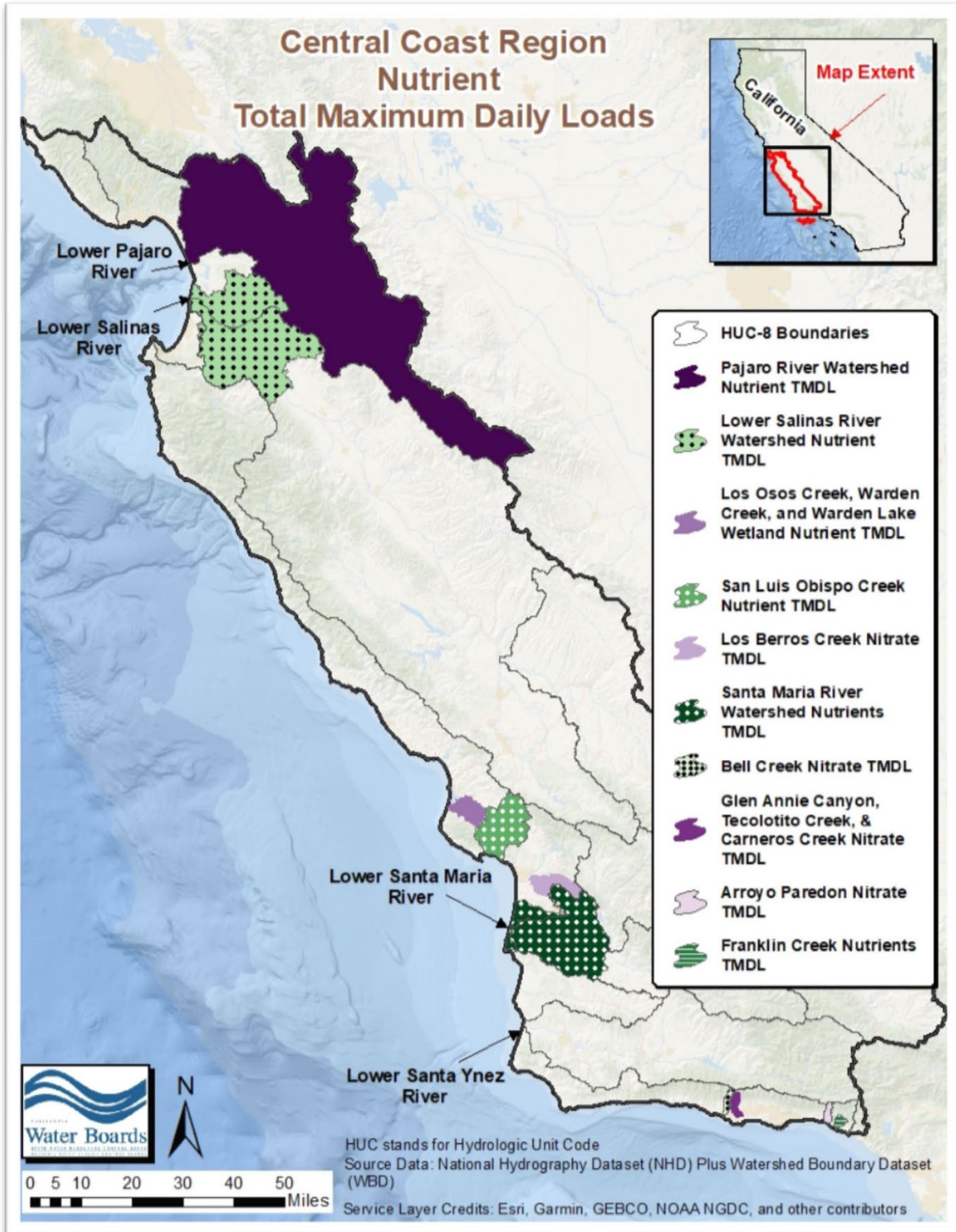


Figure C.3-2: Nutrient TMDL Areas

**Table C.3-4. Compliance Dates for Pesticide and Toxicity Limits (TMDL areas)**

<b>TMDL Project Name</b>	<b>Constituent<sup>1</sup></b>	<b>Matrix</b>	<b>Limit<sup>2</sup></b>	<b>Units<sup>3</sup></b>	<b>Compliance Date</b>
Arroyo Paredon Diazinon TMDL	Additive Toxicity (Chlorpyrifos and Diazinon)	Water Column	Sum of Additive Toxicity, TU ≤ 1.0	TU	12/31/2032
Arroyo Paredon Diazinon TMDL	Diazinon	Water Column	CCC: 0.10 CMC: 0.16	µg/L	12/31/2032
Lower Salinas River Watershed Chlorpyrifos and Diazinon TMDL	Chlorpyrifos <sup>4</sup>	Water Column	CCC: 0.015 CMC: 0.025	µg/L	12/31/2032
Lower Salinas River Watershed Chlorpyrifos and Diazinon TMDL	Diazinon <sup>4</sup>	Water Column	CCC: 0.10 CMC: 0.16	µg/L	12/31/2032
Lower Salinas River Watershed Chlorpyrifos and Diazinon TMDL	Additive Toxicity (Chlorpyrifos and Diazinon)	Water Column	Sum of Additive Toxicity, TU ≤ 1.0	TU	12/31/2032

<b>TMDL Project Name</b>	<b>Constituent<sup>1</sup></b>	<b>Matrix</b>	<b>Limit<sup>2</sup></b>	<b>Units<sup>3</sup></b>	<b>Compliance Date</b>
Lower Salinas River Watershed Sediment Toxicity and Pyrethroids in Sediment TMDL	Additive Toxicity (Pyrethroids)	Sediment	Sum of Pyrethroid TU < 1.0	TU	12/31/2032
Lower Salinas River Watershed Sediment Toxicity and Pyrethroids in Sediment TMDL	Aquatic Toxicity	Sediment	No significant toxic effect, 10-day, chronic exposure with <i>Hyalella azteca</i>	Survival endpoint	12/31/2032
Pajaro River Watershed Chlorpyrifos and Diazinon TMDL	Additive Toxicity (Chlorpyrifos and Diazinon)	Water Column	Sum of Additive Toxicity, TU ≤ 1.0	TU	12/31/2032
Pajaro River Watershed Chlorpyrifos and Diazinon TMDL	Chlorpyrifos	Water Column	CCC: 0.015 CMC: 0.025	µg/L	12/31/2032
Pajaro River Watershed Chlorpyrifos and Diazinon TMDL	Diazinon	Water Column	CCC: 0.10 CMC: 0.16	µg/L	12/31/2032

<b>TMDL Project Name</b>	<b>Constituent<sup>1</sup></b>	<b>Matrix</b>	<b>Limit<sup>2</sup></b>	<b>Units<sup>3</sup></b>	<b>Compliance Date</b>
Pajaro River Watershed Chlorpyrifos and Diazinon TMDL	Aquatic Toxicity	Sediment	No significant toxic effect, 10-day, chronic exposure with <i>Hyalella azteca</i>	Survival and reproduction endpoints	12/31/2032
Pajaro River Watershed Chlorpyrifos and Diazinon TMDL	Aquatic Toxicity	Water Column	No significant toxic effect, 7-day, chronic exposure with <i>Ceriodaphnia dubia</i>	Survival and reproduction endpoints	12/31/2032
Santa Maria River Watershed Toxicity and Pesticide TMDL	Additive Toxicity (Chlorpyrifos and Diazinon)	Water Column	Sum of Additive Toxicity, TU ≤ 1.0	TU	12/31/2032
Santa Maria River Watershed Toxicity and Pesticide TMDL	Chlorpyrifos	Water Column	CCC: 0.015 CMC: 0.025	µg/L	12/31/2032
Santa Maria River Watershed Toxicity and Pesticide TMDL	Diazinon	Water Column	CCC: 0.10 CMC: 0.16	µg/L	12/31/2032

<b>TMDL Project Name</b>	<b>Constituent<sup>1</sup></b>	<b>Matrix</b>	<b>Limit<sup>2</sup></b>	<b>Units<sup>3</sup></b>	<b>Compliance Date</b>
Santa Maria River Watershed Toxicity and Pesticide TMDL	Malathion	Water Column	CCC: 0.028 CMC: 0.17	µg/L	12/31/2032
Santa Maria River Watershed Toxicity and Pesticide TMDL	Additive Toxicity (Pyrethroids)	Sediment	Sum of Pyrethroid TU ≤ 1.0	TU	12/31/2032
Santa Maria River Watershed Toxicity and Pesticide TMDL	Aquatic Toxicity	Sediment	No significant toxic effect, 10-day, chronic exposure with <i>Hyalella azteca</i>	Survival endpoint	Not Defined <sup>5</sup>
Santa Maria River Watershed Toxicity and Pesticide TMDL	Aquatic Toxicity	Water Column	No significant toxic effect, 6-8 day, chronic exposure with <i>Ceriodaphnia dubia</i>	Survival and reproduction endpoints	Not Defined <sup>5</sup>
Santa Maria River Watershed Toxicity and Pesticide TMDL	4,4'-DDT (p,p-DDT)	Sediment	6.5	µg/kg o.c.	10/29/2044



<b>TMDL Project Name</b>	<b>Constituent<sup>1</sup></b>	<b>Matrix</b>	<b>Limit<sup>2</sup></b>	<b>Units<sup>3</sup></b>	<b>Compliance Date</b>
Santa Maria River Watershed Toxicity and Pesticide TMDL	4,4'-DDE (p,p-DDE)	Sediment	5.5	µg/kg o.c.	10/29/2044
Santa Maria River Watershed Toxicity and Pesticide TMDL	4,4'-DDD (p,p-DDD)	Sediment	9.1	µg/kg o.c.	10/29/2044
Santa Maria River Watershed Toxicity and Pesticide TMDL	Total DDT (Sediment)	Sediment	10.0	µg/kg o.c.	10/29/2044
Santa Maria River Watershed Toxicity and Pesticide TMDL	Chlordane	Sediment	1.7	µg/kg o.c.	10/29/2044
Santa Maria River Watershed Toxicity and Pesticide TMDL	Dieldrin	Sediment	0.14	µg/kg o.c.	10/29/2044
Santa Maria River Watershed Toxicity and Pesticide TMDL	Endrin	Sediment	550.0	µg/kg o.c.	10/29/2044

<b>TMDL Project Name</b>	<b>Constituent<sup>1</sup></b>	<b>Matrix</b>	<b>Limit<sup>2</sup></b>	<b>Units<sup>3</sup></b>	<b>Compliance Date</b>
Santa Maria River Watershed Toxicity and Pesticide TMDL	Toxaphene	Sediment	20.0	µg/kg o.c.	10/29/2044

<sup>1</sup>Toxic units and/or additive toxicity units are calculated using the relevant biological indicators, as described in the applicable TMDL, e.g. LC50, CCC, or CMC.

<sup>2</sup>CCC is Criterion Continuous Concentration or chronic (4-day (96-hour) average), not to be exceeded more than once in a three year period; CMC is Criterion Maximum Concentration or acute (1- hour average) not to be exceeded more than once in a three year period; the sum of additive toxicity is calculated by dividing each measured chemical concentration by that chemical's criterion (CCC or CMC) and summing those values as defined in the staff report for the respective TMDL project.

<sup>3</sup>µg/L is micrograms per liter; µg/kg is micrograms per kilogram; ng/g is nanograms per gram; o.c. means normalized for sediment organic carbon content; ppb is parts per million.

<sup>4</sup>Apply only when one of the two compounds (chlorpyrifos or diazinon) is present.

<sup>5</sup>A time schedule for aquatic toxicity was not identified in the Santa Maria River Watershed Toxicity and Pesticide TMDL; therefore, Dischargers in this area must comply with the aquatic toxicity compliance date defined in Table C.3-2.

**Table C-3.5. Compliance Dates for Pesticide and Toxicity Limits (Non-TMDL areas)**

<b>Constituent Group</b>	<b>Constituent</b>	<b>Matrix</b>	<b>Limit<sup>1</sup></b>	<b>Units<sup>2</sup></b>	<b>Compliance Date</b>
Pesticides	Acetamiprid	Water Column	2.10	µg/L	12/31/2032
Pesticides	Atrazine	Water Column	60.0	µg/L	12/31/2032
Pesticides	Bifenthrin	Sediment	0.52	µg/g o.c.	12/31/2032
Pesticides	Chlorpyrifos	Water Column	0.023	µg/L	12/31/2032
Pesticides	Chlorpyrifos	Sediment	1.77	µg/g o.c.	12/31/2032
Pesticides	Clothianidin	Water Column	0.05	µg/L	12/31/2032
Pesticides	Cyanazine	Water Column	27.0	µg/L	12/31/2032
Pesticides	Cyfluthrin	Sediment	1.08	µg/g o.c.	12/31/2032
Pesticides	Cypermethrin	Sediment	0.38	µg/g o.c.	12/31/2032
Pesticides	Danitol (fenpropathrin)	Sediment	1.10	µg/g o.c.	12/31/2032
Pesticides	Demeton-s-methyl sulfoxide (oxydemeton-methyl)	Water Column	46	µg/L	12/31/2032
Pesticides	Diazinon	Water Column	0.105	µg/L	12/31/2032
Pesticides	Dichlorvos	Water Column	0.0058	µg/L	12/31/2032
Pesticides	Dimethoate	Water Column	0.50	µg/L	12/31/2032
Pesticides	Dinotefuran	Water Column	23.5	µg/L	12/31/2032
Pesticides	Disulfoton (Disyton)	Water Column	0.01	µg/L	12/31/2032
Pesticides	Diuron	Water Column	80.0	µg/L	12/31/2032
Pesticides	Esfenvalerate	Sediment	1.54	µg/g o.c.	12/31/2032
Pesticides	Fenvalerate	Sediment	1.54	µg/g o.c.	12/31/2032
Pesticides	Glyphosate	Water Column	26,600	µg/L	12/31/2032
Pesticides	Imidacloprid	Water Column	0.01	µg/L	12/31/2032
Pesticides	Cyhalothrin, lambda	Sediment	0.45	µg/g o.c.	12/31/2032
Pesticides	Linuron	Water Column	0.09	µg/L	12/31/2032
Pesticides	Malathion	Water Column	0.049	µg/L	12/31/2032
Pesticides	Methamidophos	Water Column	4.50	µg/L	12/31/2032
Pesticides	Methidathion	Water Column	0.66	µg/L	12/31/2032
Pesticides	Paraquat	Water Column	< 36.9	µg/L	12/31/2032
Pesticides	Parathion-methyl	Water Column	0.25	µg/L	12/31/2032
Pesticides	Permethrin	Sediment	10.83	µg/g o.c.	12/31/2032

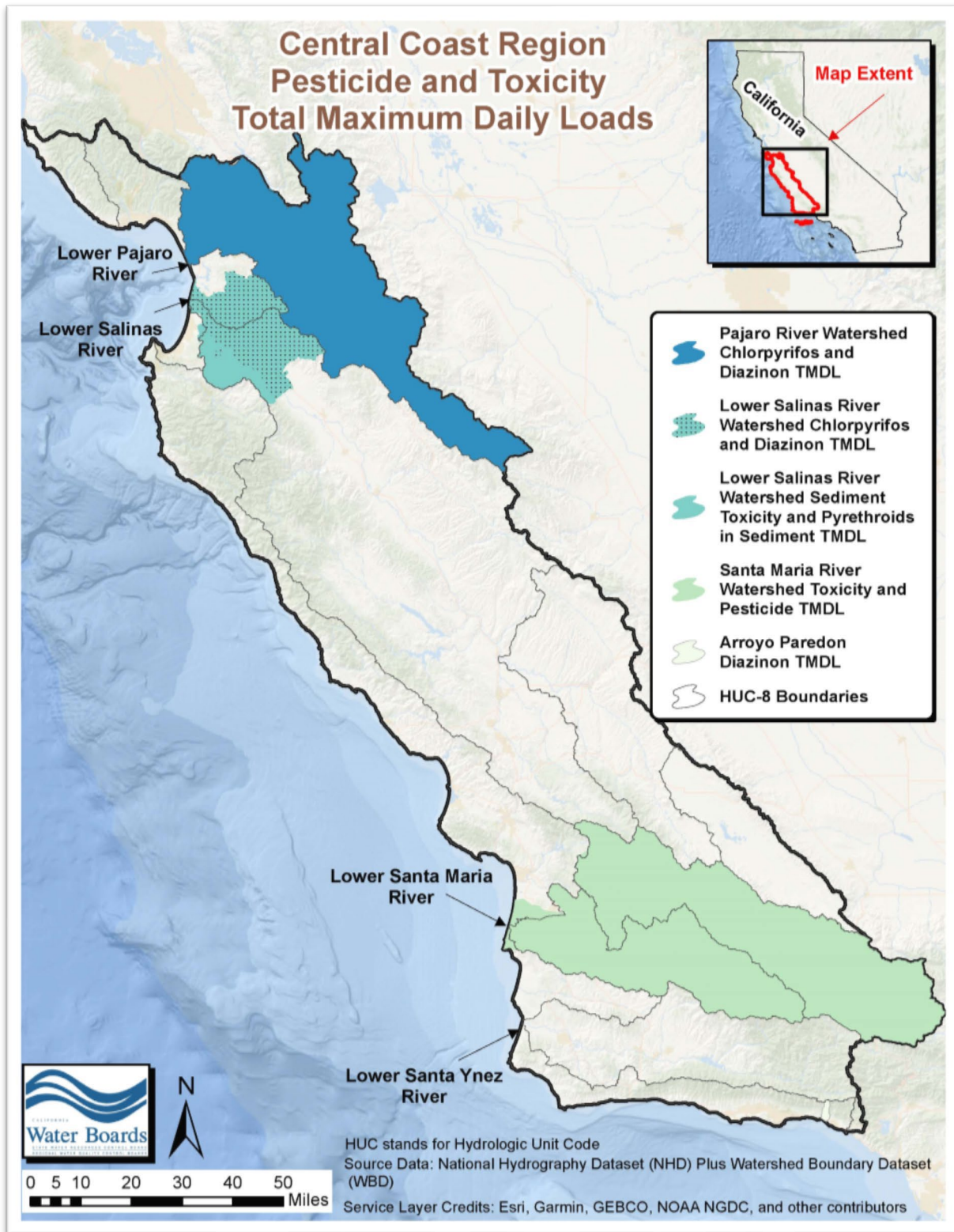
Constituent Group	Constituent	Matrix	Limit <sup>1</sup>	Units <sup>2</sup>	Compliance Date
Pesticides	Phorate	Water Column	0.21	µg/L	12/31/2032
Pesticides	Phosmet	Water Column	0.80	µg/L	12/31/2032
Pesticides	Simazine	Water Column	40.0	µg/L	12/31/2032
Pesticides	Thiacloprid	Water Column	0.97	µg/L	12/31/2032
Pesticides	Thiamethoxam	Water Column	0.74	µg/L	12/31/2032
Pesticides	Trifluralin	Water Column	2.40	µg/L	12/31/2032
Toxicity	Sediment Toxicity	Sediment	No significant effect based on chronic or acute toxicity to applicable test organism	Survival, growth, and reproduction endpoints <sup>3</sup>	12/31/2032
Toxicity	Water Column Toxicity	Water Column	No significant effect based on chronic or acute toxicity to applicable test organism	Survival, growth, and reproduction endpoints <sup>3</sup>	12/31/2032
Toxicity	Toxic Units	Sediment	Sum of additive toxicity ≤ 1	Toxic Unit (TU) <sup>4</sup>	12/31/2032
Toxicity	Toxic Units	Water Column	Sum of additive toxicity ≤ 1	Toxic Unit (TU) <sup>4</sup>	12/31/2032

<sup>1</sup>Attachment A to this Order describes the sources of the limits established in this table.

<sup>2</sup>µg/L is micrograms per liter; µg/kg is micrograms per kilogram; ng/g is nanograms per gram; o.c. means normalized for sediment organic carbon content; ppb is parts per million.

<sup>3</sup>Toxicity determinations will be pass/fail based on a comparison of the test organism's response (survival, growth, and reproduction) to the water sample compared to the control using the Test of Significant Toxicity (TST statistical approach), or a statistical t-test, based on the toxicity provisions in the State Water Board *Water Quality Control Plan for Inland Surface Waters, Enclosed Bays, and Estuaries in California* (in draft). If a sample is declared "fail" (i.e., toxic) for any endpoint, then the limit is not met. The most sensitive test species for each constituent must be used when evaluating toxicity.

<sup>4</sup>Toxic units (TU) and/or additive toxicity units are calculated using the relevant biological indicators, e.g. LC50, CCC, or CMC as follows: Calculate additive toxicity for organophosphate pesticides in non-TMDL watersheds as defined in the TMDL for Chlorpyrifos and Diazinon in the Lower Salinas River Watershed; and calculate TUs for pyrethroid pesticides in non-TMDL watersheds as defined in the TMDL for Sediment Toxicity and Pyrethroids in the Lower Salinas River Watershed.



**Figure C.3-3: Pesticide and Toxicity TMDL Areas**

**Table C.3-6. Compliance Dates for Sediment Limits (TMDL areas)**

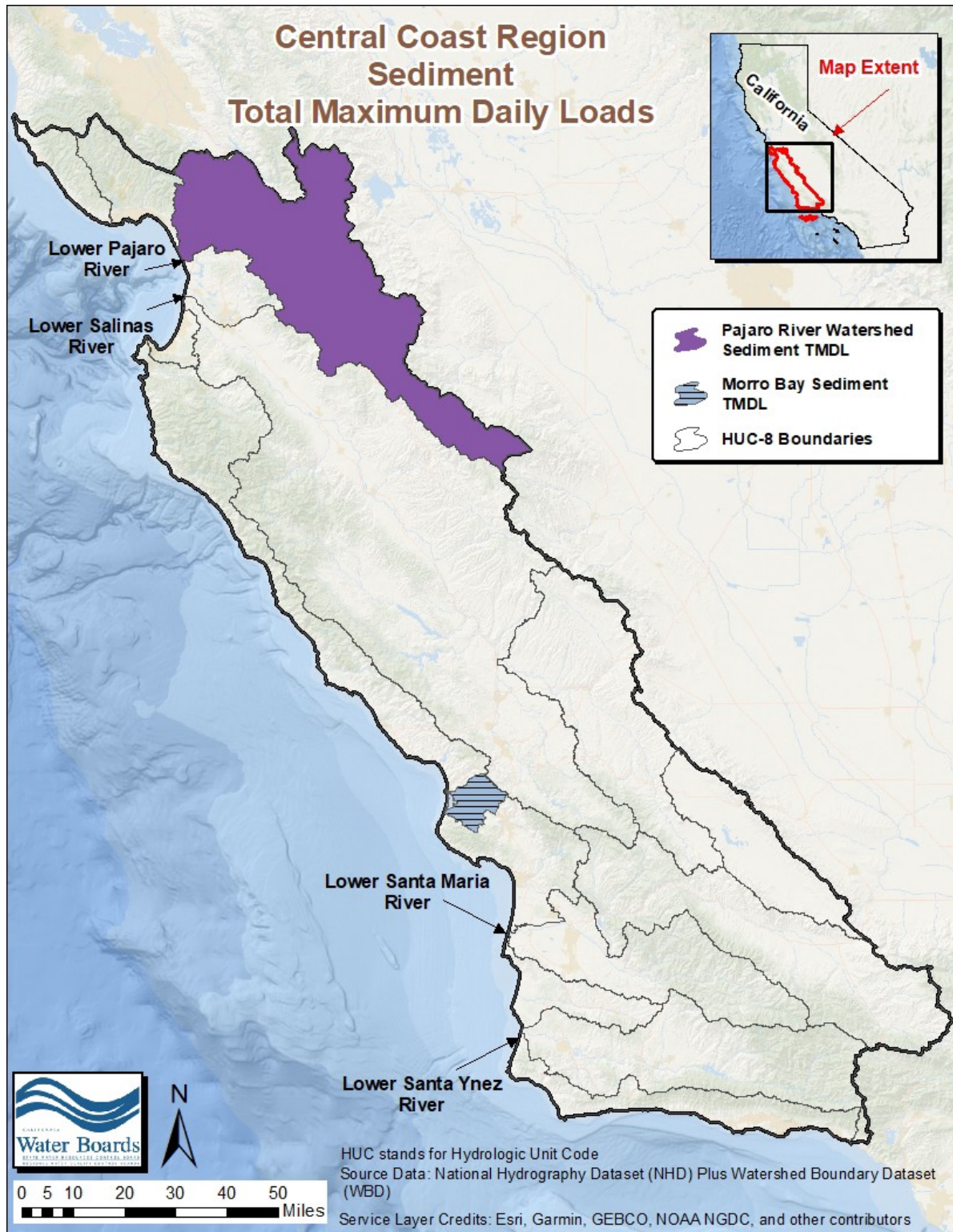
<b>TMDL Project Name</b>	<b>Constituent</b>	<b>Limit<sup>1</sup></b>	<b>Units</b>	<b>Compliance Date</b>
Morro Bay Sediment TMDL	Sediment	285 – 6,662	Tons of sediment per year	12/3/2053
Pajaro River Watershed Sediment TMDL	Sediment	447 – 4,114	Tons of sediment per year	11/27/2051

<sup>1</sup>The Morro Bay Sediment TMDL and Pajaro River Watershed Sediment TMDL include load allocations for specific waterbody reaches within the TMDL project area. The limits for those TMDLs are summarized in this table as ranges; however, the exact load allocation values for each reach apply as described in the TMDL and Basin Plan and will be assessed as numeric limits for the purposes of this Order.

**Table C.3-7. Compliance Dates for Turbidity Limits (Non-TMDL areas)**

<b>Constituent Group</b>	<b>Constituent</b>	<b>Beneficial Use</b>	<b>Limit</b>	<b>Units<sup>1</sup></b>	<b>Compliance Date</b>
Physical Parameters and General Chemistry	Turbidity	WARM	40.0	NTU	12/31/2032
Physical Parameters and General Chemistry	Turbidity	COLD	25.0	NTU	12/31/2032

<sup>1</sup>NTU is nephelometric turbidity units



**Figure C.3-4: Sediment TMDL Areas**