

CALIFORNIA REGIONAL WATER QUALITY CONTROL BOARD
CENTRAL VALLEY REGION

Fresno Office
1685 "E" Street
Fresno, CA 93706-2007

Sacramento Office (Main)
11020 Sun Center Drive #200
Rancho Cordova, CA 95670-6114

Redding Office
364 Knollcrest Drive #205
Redding, CA 96002

[Regional Board Website](https://www.waterboards.ca.gov/centralvalley) (<https://www.waterboards.ca.gov/centralvalley>)

MONITORING & REPORTING PROGRAM R5-2014-0085-01



ORDER INFORMATION

Order Type(s):	Revised Monitoring & Reporting Program (MRP)
Status:	ADOPTED
Program:	Title 27 Discharges to Land
Region 5 Office:	Sacramento (Rancho Cordova)
Discharger(s):	Magris Talc USA, Inc.
Facility:	Red Hill Mine
Address:	6501 Red Hill Road, Angels Camp, CA 95222
County:	Calaveras County
Parcel Nos.:	064-003-094-000
WDID:	5B052017001
Prior Order(s):	99-071; R5-2021-0014_noc

REGIONAL BOARD INFORMATION

Sacramento Office (Main)

Rancho Cordova, CA 95670-6114
11020 Sun Center Drive #200
Telephone: (916) 464-3291

Fresno Office

1685 "E" Street
Fresno, CA 93706-2007
Telephone: (559) 445-5116

Redding Office

364 Knollcrest Drive #205
Redding, CA 96002
Telephone: (530) 224-4845

[Regional Board Website](https://www.waterboards.ca.gov/centralvalley)

<https://www.waterboards.ca.gov/centralvalley>

SIGNATURE

This Order is effective as of the date set forth below.

ORDERED BY:

PATRICK PULUPA,
Executive Officer

TABLE OF CONTENTS

GLOSSARY	ii
PREFACE	iii
MONITORING & REPORTING PROGRAM.....	1
A. General Provisions	1
1. Incorporation of Standard Provisions	1
2. Compliance with Title 27	1
B. Detection Monitoring Program.....	1
1. Leachate Seeps	1
2. Surface Water Monitoring.....	1
C. Facility Monitoring.....	3
1. Regular Maintenance Inspections	3
2. Site Winterization	3
3. Major Storm Events.....	3
D. Reporting Requirements.....	4
1. Detection Monitoring Reports.....	5
2. Annual Facility Inspection Report.....	5
3. Major Storm Event Reports	5
4. Financial Assurances Report	6
5. General Reporting Provisions	6
a. Compliance with SPRRs.....	6
b. Transmittal Letters	6
c. Monitoring Data and Reports	6
LIST OF ATTACHMENTS.....	7
ATTACHMENT A—FACILITY LOCATION AND FEATURES	9
ATTACHMENT B—FACILITY MAP	10

GLOSSARY

AMR	Annual Monitoring Report
CIWQS	California Integrated Water Quality System Project
COC	Constituent of Concern
GeoTracker	State Water Board's Data Management System for Sites with Potential Groundwater Impact
LCRS.....	Leachate Collection and Removal System
µg/L	micrograms per liter
mg/L	milligrams per liter
MRP	Monitoring and Reporting Program
MU.....	Mining Unit
N/A	Not Applicable
Qualified Professional	Civil Engineer or Geologist licensed by the State of California
SPRRs / Standard Provisions	Standard Provisions and Reporting Requirements for Mining Wastes for Title 27 (27CCR §20005 et seq.) February 2009
Title 27	California Code of Regulations, Title 27 (27CCR)
WDRs.....	Waste Discharge Requirements

PREFACE

Initially adopted by the California Regional Water Quality Control Board, Central Valley Region (Central Valley Water Board) pursuant to Water Code section 13267, subdivision (b)(1), and subsequently revised by the Executive Officer in accordance with delegated authority per Water Code section 13223, this Order establishes a Revised Monitoring and Reporting Program (Revised MRP) for Magris Talc USA (Discharger), which owns and operates the Red Hill Mine (Facility) in Calaveras County. Additional information regarding the Facility is set forth in the enumerated findings of the Waste Discharge Requirements Order R5-2014-0085 (WDR Order).

Except as otherwise provided in the following Revised MRP, the WDR Order findings describing the Facility are incorporated herein. The Revised MRP may contain supplemental findings related to monitoring and reporting activities, and/or Facility conditions. For the purposes of California Code of Regulations, title 27 (Title 27) (e.g., §§ 21720, 20380-20435), the revised findings and provisions of this Order are conversely incorporated as part of the WDRs Order as well.

MONITORING & REPORTING PROGRAM

IT IS HEREBY ORDERED, pursuant to Water Code section 13267: that all previously issued Monitoring and Reporting Program(s) for the discharge of solid waste at the Facility are rescinded (except for enforcement purposes); and that the Discharger, their agents, employees, and successors shall comply with the following Monitoring and Reporting Program (MRP). The Discharger shall not implement any changes until a revised MRP is issued by the Central Valley Water Board or its Executive Officer.

A. General Provisions

1. Incorporation of Standard Provisions

The Discharger shall comply with all relevant provisions of the *Standard Provisions & Reporting Requirements for Waste Discharge Requirements for Discharges of Mining Wastes Regulated by Title 27, February 2009* (SPRRs or Standard Provisions).

2. Compliance with Title 27

The Discharger shall comply with all Title 27 provisions as they pertain to activities described in this MRP (including SPRRs).

B. Detection Monitoring Program

1. Leachate Seeps

The Discharger shall visually monitor the closed mining unit/landfill (including toe area) for leachate seeps as part of regular maintenance inspections. Any leachate seeps observed during these inspections or at any other time shall be sampled and analyzed for parameters listed in Tables 2 and 3.

2. Surface Water Monitoring

As part of regular maintenance inspections, the Discharger shall visually monitor surface water monitoring points listed in Table 1 for evidence of a release (e.g., color, turbidity). Surface water shall be sampled if evidence of release is observed, and analyzed for parameters listed in Tables 2 and 3.

Table 1—Surface Water Detection Monitoring Network

Monitoring Point	Program or Function	Location / Notes
SW-E	Background (Upstream)	Background
SW-D	Downstream	Downstream from the Mining Unit's Geochemical Barrier
SW-G	Detection	Downstream from the Facility

Table 2—Surface Water and Leachate Detection Monitoring, Physical Parameters

Physical Parameter	GeoTracker Code	Units
Electrical Conductivity	SC	µmhos/cm
pH	PH	Std. Units
Turbidity	TURB	NTUs
Flow to Surface Waters at Time of Sampling	(none)	Yes/No

Table 1—Surface Water and Leachate Detection Monitoring, Constituent Parameters

Constituent Parameter	GeoTracker Code	Units
Total Suspended Solids	TSS	mg/L
Total Dissolved Solids	TDS	mg/L
Sulfate	SO4	mg/L
Sodium	NA	mg/L
Total and Dissolved Metals (Iron, Manganese, Arsenic, Cobalt & Nickel)	several	mg/L or µg/L

See Glossary for definitions of terms and abbreviations in table.

If the physically significant evidence of a release from the unit is confirmed, the Discharger shall follow applicable RESPONSE TO RELEASE provisions of the SPRR, including notification of the release, sampling of all affected media and analyses per Table 2&3, evaluation monitoring, and submission of a preliminary engineering feasibility study.

C. Facility Monitoring

Documentation of the results of Facility inspections and any repairs implemented shall include field observations, the location of any damage observed (i.e. on a site map), photographs of the damage, and a description of any repairs implemented, including post-repair photographs.

1. Regular Maintenance Inspections

Mining Unit facilities shall be inspected **semi-annually** to identify the need for maintenance and repairs. Necessary repairs shall be completed within 30 days of each inspection or as soon as conditions allow. Field logs of these inspections and documentation of the repairs shall be included in annual monitoring reports.

2. Site Winterization

Prior to 30 September of each year, the Discharger shall inspect the Facility to assess repair and maintenance needs for drainage control systems, cover systems; and preparedness for winter conditions (e.g., erosion and sedimentation control). If repairs are made, problem areas shall be photographed before and after repairs. Any necessary construction, maintenance, or repairs shall be completed by 31 October and reported in the annual monitoring report due by 1 February as specified in **Section D.2** of Reporting Requirements.

3. Major Storm Events

Within seven days of any storm event capable of causing damage or significant erosion (Major Storm Event, i.e. one which produces 2.0 inches or more of precipitation within 24-hour period, as measured at the New Melones Dam Station), the Discharger shall inspect the Facility for damage to any precipitation, diversion and drainage facilities, and all mining unit infrastructure. Necessary repairs shall be completed within 30 days of the inspection or as soon as conditions allow. The Discharger

shall take photos of any problem areas before and after repairs and report them as specified in **Section D.3** for Reporting Requirements.

D. Reporting Requirements

Table 2—Summary of Required Reports

Section	Report	Deadline
§ D.1	Detection Monitoring Reporting (B.1&B.2)	<p>Immediately after Discovery¹ (staff notification by e-mail)</p> <p>Within 30 Days of Sampling and Analyses (written report, before and after photos, data tables, release verification)</p> <p>90 Days After Release has been Verified² Amended Report of Waste Discharge</p> <p>180 days After Release has been Verified³ Engineering Feasibility Study</p>
§ D.2	Annual Facility Inspection Report (B&C)	1 February
§ D.3	Major Storm Reporting (C.3)	<p>Immediately after Damage Discovery (staff notification)</p> <p>Within 14 Days of Completing Repairs (written report, before and after photos)</p>

¹ SPRR Section X: Response to Release

² SPRR Section X.C: Release has been Verified 2.

³ SPRR Section X.C: Release has been Verified 3.

Section	Report	Deadline
§ D.4	Financial Assurances Report (WDR E.)	1 June

1. Detection Monitoring Reports

The Discharger shall visually monitor the mining unit/landfill and surface water sampling points and immediately notify staff by e-mail if leachate leaks or surface water evidence of release from the unit and sample per **Sections-D1.&2** is discovered. Within 30 days of receiving laboratory analyses, the Discharger shall submit a written report with an evaluation of the release including photos and water quality data.

If release is verified, the Discharger shall submit an amended Report of Waste Discharge within 90 days, and, if applicable, an Engineering Feasibility Study within 180 days.

2. Annual Facility Inspection Report

By **1 February**, the Discharger shall submit a report summarizing the results of the Seep and Surface Water visual monitoring per **Sections B.1** and **B.2**, Regular Facility Inspections per **Section C.1**, and Site Winterization per **Section C.2**. The report shall provide summaries of major storm events which occurred during the monitored year and include inspection summaries. The report shall discuss any repair measures implemented, any preparations for winter, and include photographs of any problem areas and repairs.

The report shall include an evaluation of results of analyses of any collected samples, field and laboratory sheets, water quality data in tabular form, and comparison to historical water quality data. Historical surface and groundwater quality shall be included in each annual report in tabular form.

3. Major Storm Event Reports

Immediately following each post-storm inspection described in **Section C.2**, the Discharger shall notify Central Valley Water Board staff of any damage or significant erosion (by e-mail upon discovery). Subsequent repairs shall

be reported to the Central Valley Water Board (together with before and after photos of the repaired areas) within 14 days of completion. A summary of the event damage and repairs shall be included in the Annual Monitoring Report.

4. Financial Assurances Report

By **1 June** of each year, the Dischargers shall submit a copy of the annual financial assurance update (See WDRs Order Section **E.**)

5. General Reporting Provisions

a. Compliance with SPRRs

All reports submitted under this MRP shall comply with applicable provisions of the SPRRs.

b. Transmittal Letters

Each report submitted under this MRP shall be accompanied by a Transmittal Letter providing a brief overview of the enclosed report, as well as the following:

- i. Any maintenance issues or damage discovered since the last report was submitted and action taken to correct them.
- ii. A statement from the submitting party, or its authorized agent, signed under penalty of perjury, certifying that, to the best of the signer's knowledge, the contents of the enclosed report are true, accurate and complete.

c. Monitoring Data and Reports

i. Electronic Submission via GeoTracker

All reports with monitoring data shall be submitted electronically via the State Water Board's [GeoTracker Database](https://geotracker.waterboards.ca.gov) (<https://geotracker.waterboards.ca.gov>). After report upload, the Discharger shall notify Central Valley Water Board staff via email at CentralVallySacramento@WaterBoards.ca.gov with a cc to compliance staff. The following information shall be included in the body of the email:

MONITORING & REPORTING PROGRAM R5-2014-0085-01
MAGRIS TALC USA, INC.
RED HILL MINE
CALAVERAS COUNTY

7

Attention:	Title 27 Mining
Report Title:	Title of Report
Geotracker ID:	L10008555514
GeoTracker Upload ID:	
Facility Name:	Red Hill Mine
County:	Calaveras County
CIWQS Place ID:	252128

LIST OF ATTACHMENTS

Attachment A—Facility Location and Features
Attachment B—Facility Map

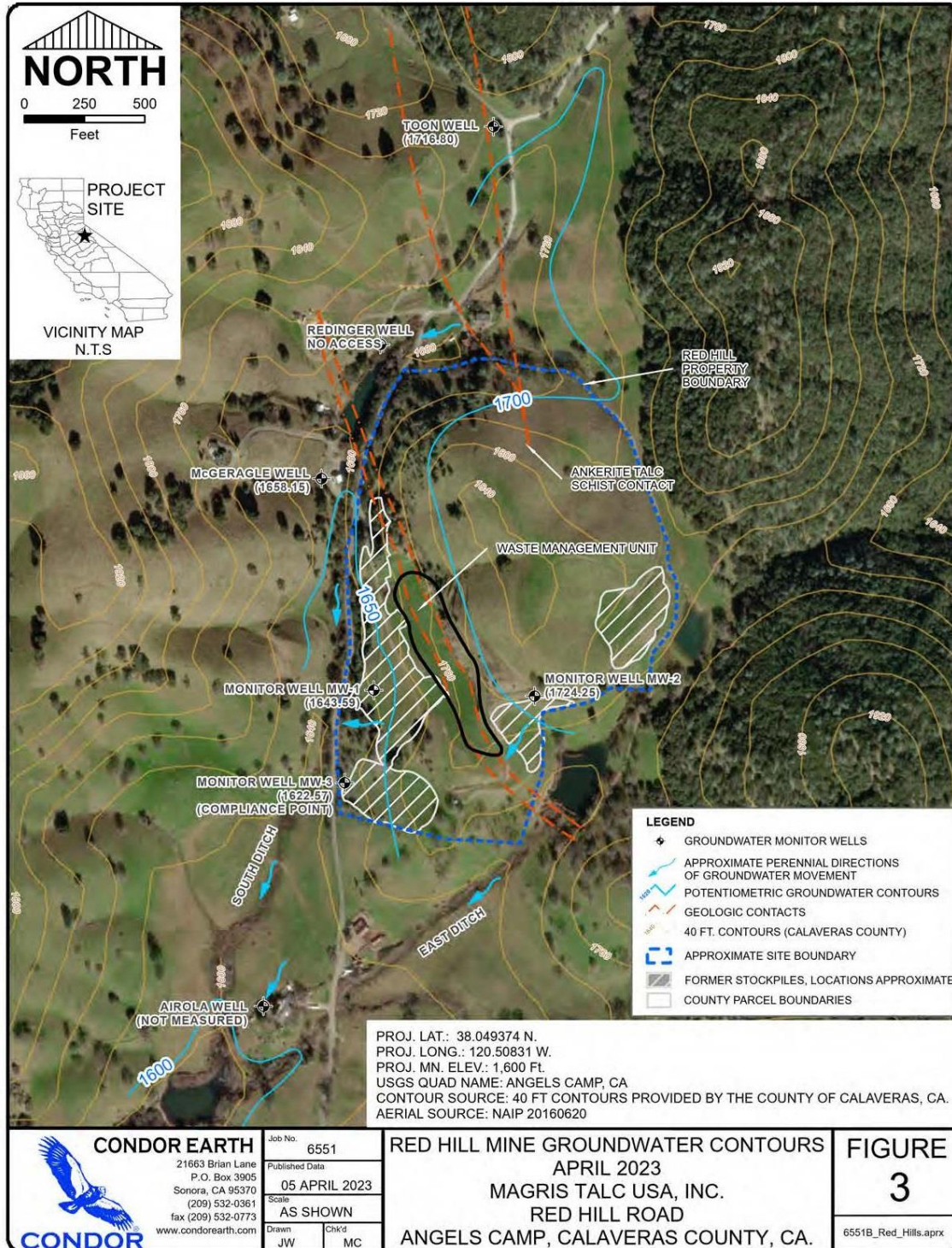
ENFORCEMENT

If, in the opinion of the Executive Officer, the Discharger fail to comply with the provisions of this Order, the Executive Officer may refer this matter to the Attorney General for judicial enforcement, may issue a complaint for administrative civil liability, or may take other enforcement actions. Failure to comply with this Order may result in the assessment of Administrative Civil Liability of up to \$10,000 per violation, per day, depending on the violation, pursuant to the Water Code, including sections 13268, 13350 and 13385. The Central Valley Water Board reserves the right to take any enforcement actions authorized by law.

ADMINISTRATIVE REVIEW

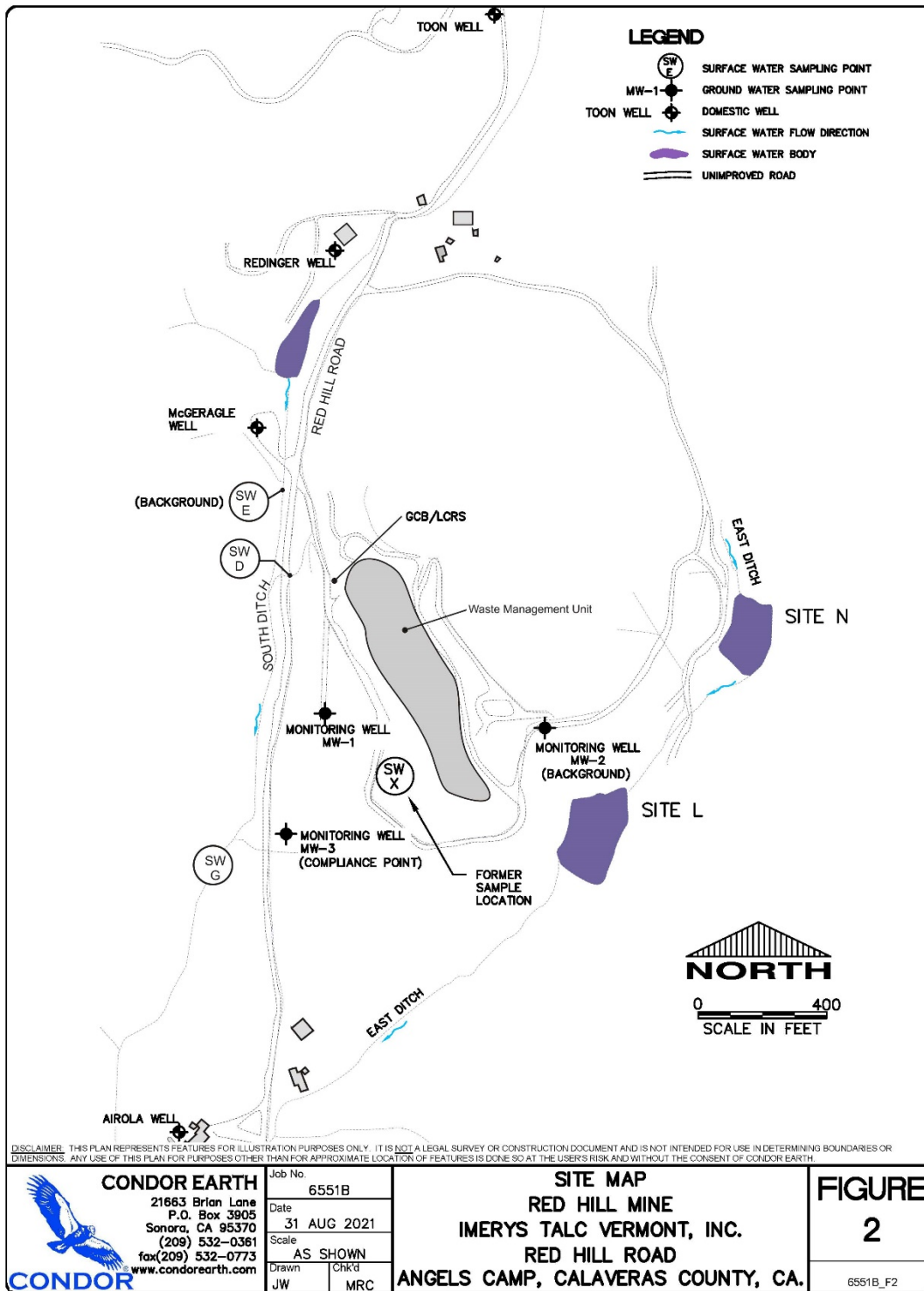
Any person aggrieved by this Central Valley Water Board action may petition the State Water Board for review in accordance with Water Code section 13320 and California Code of Regulations, title 23, section 2050 et seq. To be timely, the petition must be received by the State Water Board by 5:00 pm on the 30th day after the date of this Order; if the 30th day falls on a Saturday, Sunday or state holiday, the petition must be received by the State Water Board by 5:00 pm on the next business day. The law and regulations applicable to filing petitions are available on the [State Water Board website](http://www.waterboards.ca.gov/public_notices/petitions/water_quality) (http://www.waterboards.ca.gov/public_notices/petitions/water_quality). Copies will also be provided upon request.

ATTACHMENT A—FACILITY LOCATION AND FEATURES



Attachment A: Facility Location, Boundary, Mining Unit, and Groundwater Contours. Drawing Reference: 2023 1st Semi-annual Monitoring Report.

ATTACHMENT B—FACILITY MAP



Attachment B: Facility Map with Surface Water Monitoring Points.